



# SONOFF NS Panel Smart Scene Wall Switch User Guide

[Home](#) » [SonOFF](#) » SONOFF NS Panel Smart Scene Wall Switch User Guide 

## Contents

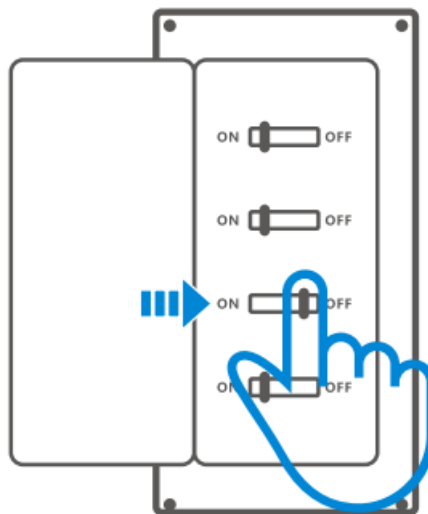
- [1 SONOFF NS Panel Smart Scene Wall Switch](#)
- [2 Power off](#)
- [3 Wiring instruction](#)
- [4 Equipment Installation](#)
- [5 Power on](#)
- [6 Add Device](#)
- [7 Operation Guide](#)
- [8 Documents / Resources](#)
  - [8.1 References](#)
- [9 Related Posts](#)



**SONOFF NS Panel Smart Scene Wall Switch**

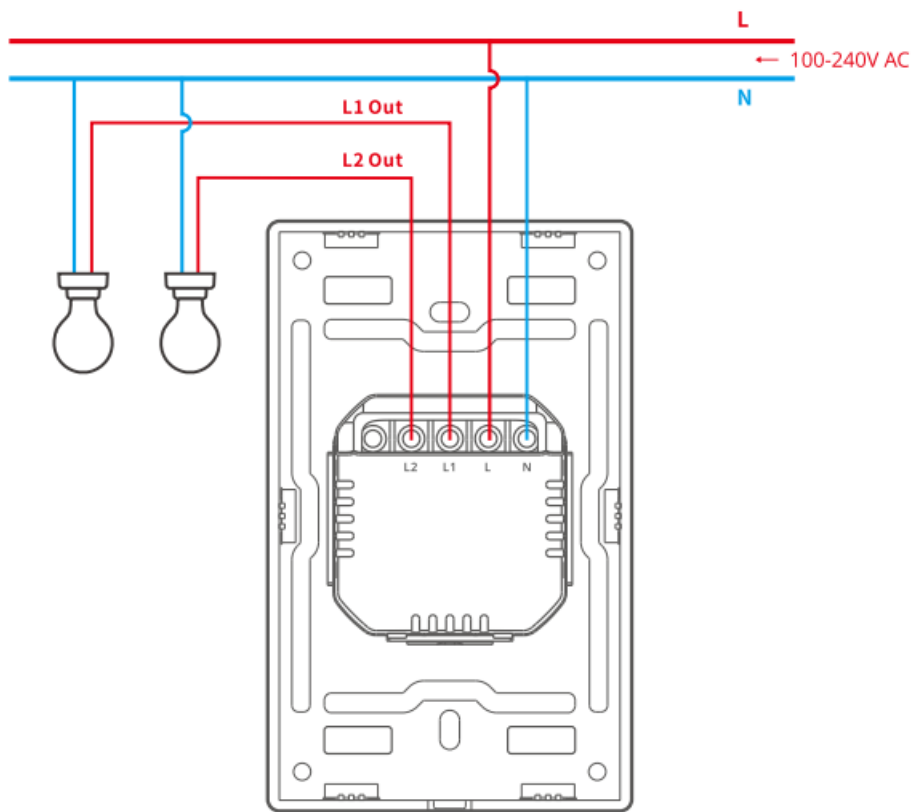


## Power off



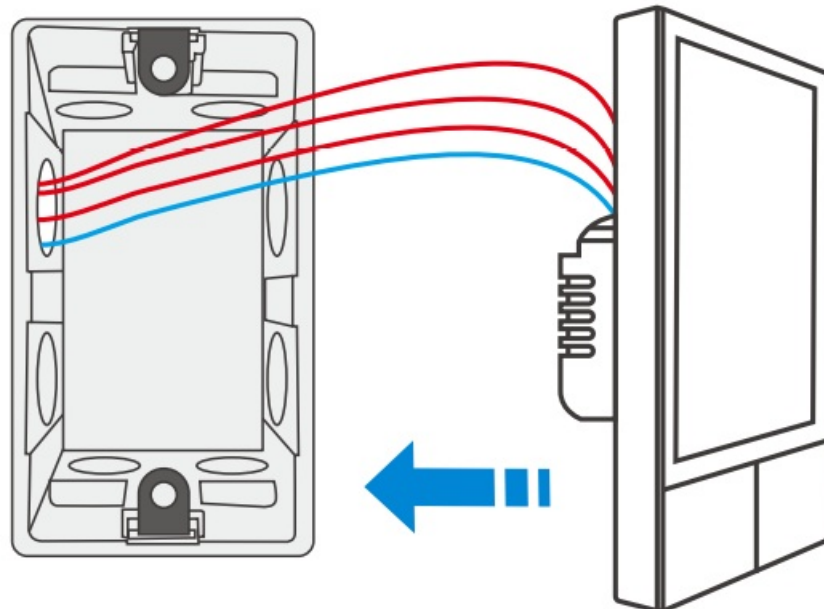
Please install and maintain the device by a professional electrician. To avoid electric shock hazard, do not operate any connection or contact the terminal connector while the device is powered on!

## Wiring instruction



Make sure the neutral wire and live wire connection is correct.

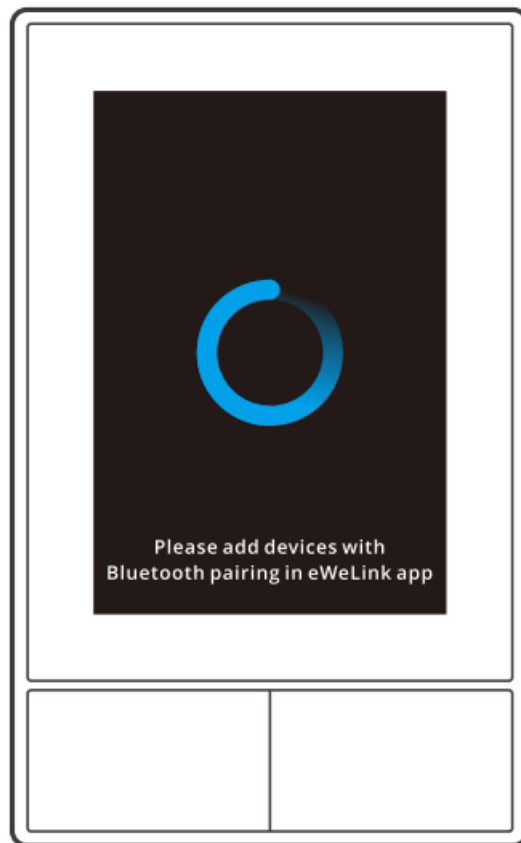
## Equipment Installation



Download the eWeLink App

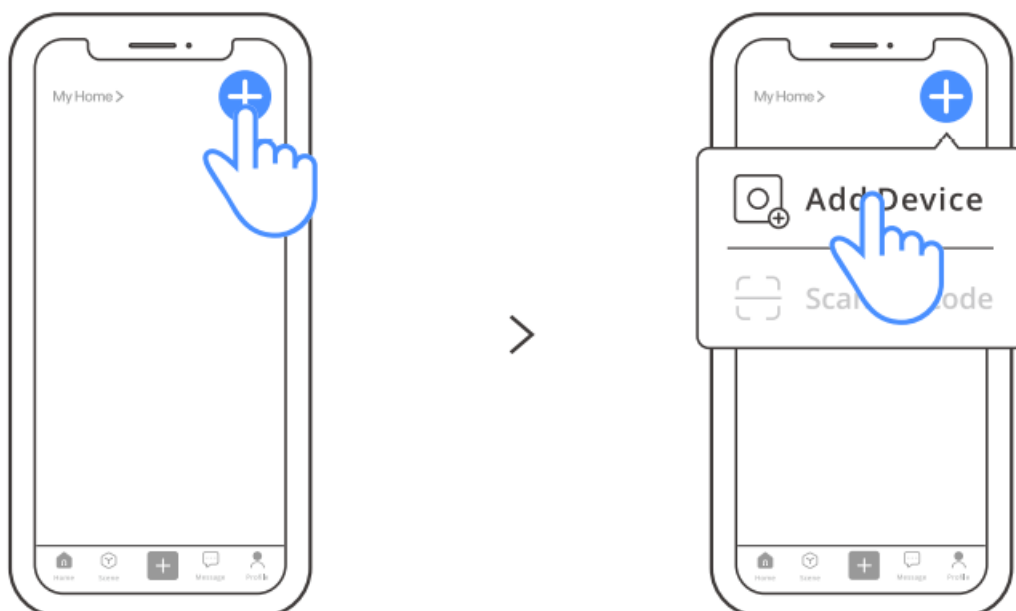


## Power on



After powering on, the device will enter the Bluetooth Pairing Mode during the first use. The screen status is shown in the above image.

## Add Device



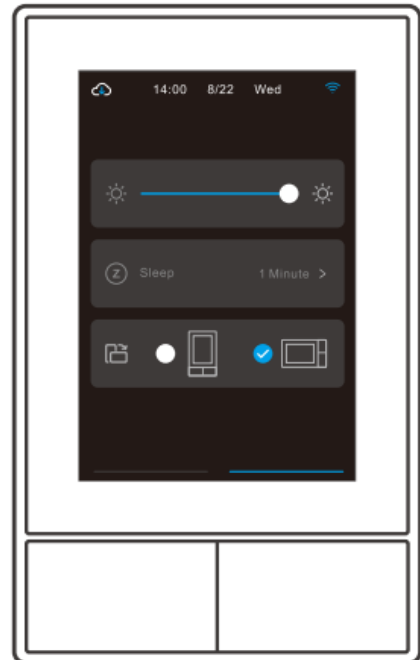
Tap “+” and select “Add Device”, then operate following the prompt on the App.

It's required to turn on the Bluetooth on your Phone when adding a device.

## Operation Guide



>



### Dropdown

Settings of the screen brightness and sleep time.

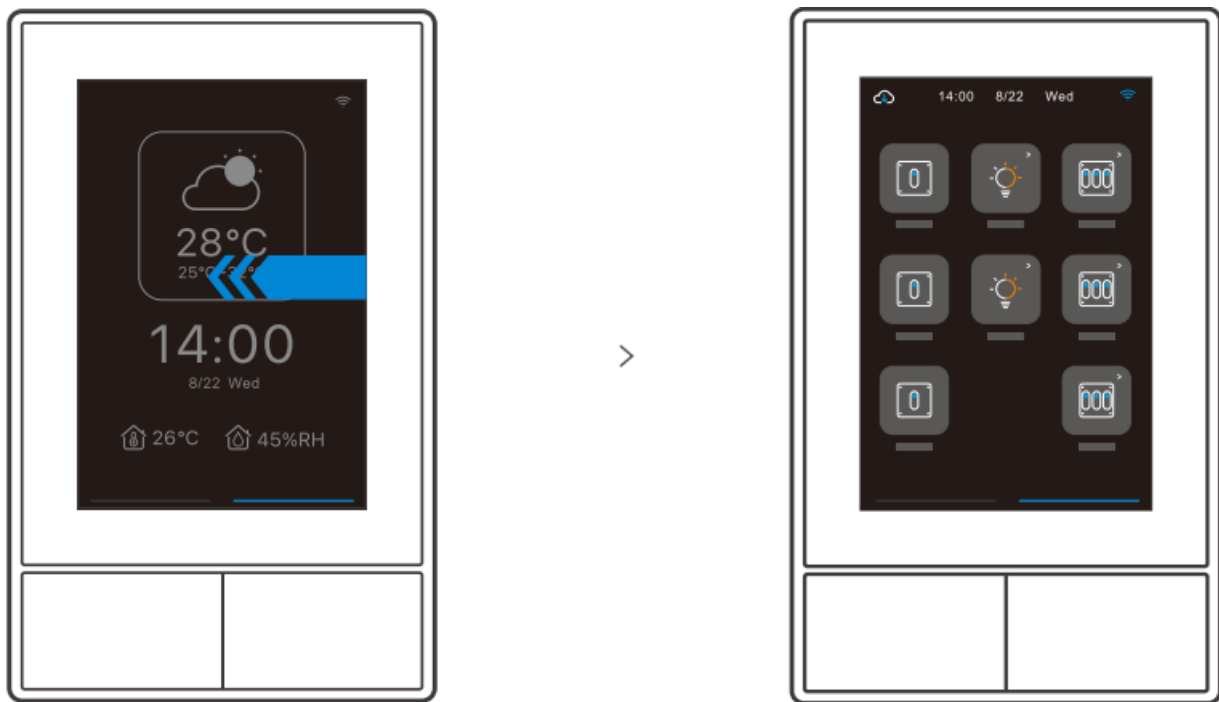


>



### Swipe right

After adding temperature controller function in the APP, you can set the added temperature controller on the device.



### Swipe left

After adding widgets in the APP, you can control the added widgets on the device.



<https://sonoff.tech/usermanuals>

Scan the QR code or visit the website to learn about the detailed user manual and help.

### FCC compliance statement

1. This device complies with part 15 of the FCC Rules. Operation is subject to the following two conditions:
  1. This device may not cause harmful interference, and
  2. This device must accept any interference received, including interference that may cause undesired operation.
2. Changes or modifications not expressly approved by the party responsible for compliance could void the user's authority to operate the equipment.

**Note:** This equipment has been tested and found to comply with the limits for a Class B digital device, pursuant to part 15 of the FCC Rules. These limits are designed to provide reasonable protection against harmful interference in a residential installation.

This equipment generates, uses and can radiate radio frequency energy and, if not installed and used in accordance with the instructions, may cause harmful interference to radio communications. However, there is no guarantee that interference will not occur in a particular installation. If this equipment does cause harmful interference to radio or television reception, which can be determined by turning the equipment off and on, the user is encouraged to try to correct the interference by one or more of the following measures:

- Reorient or relocate the receiving antenna.

- Increase the separation between the equipment and receiver.
- Connect the equipment into an outlet on a circuit different from that to which the receiver is connected.
- Consult the dealer or an experienced radio/TV technician for help.

#### **FCC Radiation Exposure statement:**

This equipment complies with FCC radiation exposure limits set forth for an uncontrolled environment.

This equipment should be installed and operated with minimum distance of 20 cm between the radiator and your body.

This transmitter must not be co-located or operating in conjunction with any other antenna or transmitter.

For CE Frequency

EU Operating Frequency Range

Wi-Fi: 802.11 b/g/n 2412-2472 MHz

BLE: 2402-2480 MHz

EU Output Power

Wi-Fi 2.4G ≤ 20dBm

BLE ≤ 10dBm

#### **EU Declaration of Conformity**

Hereby, Shenzhen Sonoff Technologies Co., Ltd. declares that the radio equipment type NSPanel-US, NSPanel-USW is in compliance with Directive 2014/53/EU. The full text of the EU declaration of conformity is available at the following internet address: <https://sonoff.tech/compliance/>

#### **ISED Notice**

This device contains licence-exempt transmitter(s)/receiver(s) that comply with Innovation, Science and Economic Development Canada's licence-exempt RSS(s). Operation is subject to the following two conditions:

1. This device may not cause interference.
2. This device must accept any interference, including interference that may cause undesired operation of the device.

This Class B digital apparatus complies with Canadian ICES-003(B).

This device complies with RSS-247 of Industry Canada.

Operation is subject to the condition that this device does not cause harmful interference.

#### **ISED Radiation Exposure Statement**

This equipment complies with ISED radiation exposure limits set forth for an uncontrolled environment.

This equipment should be installed and operated with minimum distance of 20 cm between the radiator and your body.

This transmitter must not be co-located or operating in conjunction with any other antenna or transmitter.

#### **SAR Warning**

Under normal use of condition, this equipment should be kept a separation distance of at least 20 cm between the antenna and the body of the user.

#### **WEEE Disposal and Recycling Information**

All products bearing this symbol are waste electrical and electronic equipment (WEEE as in directive 2012/19/EU) which should not be mixed with unsorted household waste. Instead, you should protect human health and the environment by handing over your waste equipment to a designated collection point for the recycling of waste electrical and electronic equipment, appointed by the government or local authorities.


Correct disposal and recycling will help prevent potential negative consequences to the environment and human health. Please contact the installer or local authorities for more information about the location as well as terms and conditions of such collection points.

To ensure the safety of your electrical installation, it's essential either a Miniature Circuit Breaker (MCB) or a Residual Current Operated Circuit Breaker (RCBO) with an electrical rating of 4A has been installed before the NSPanel-US, NSPanel-USW.

Shenzhen Sonoff Technologies Co., Ltd.  
3F & 6F, Bldg A, No. 663, Bulong Rd, Shenzhen, Guangdong, China  
ZIP code: 518000  
Website: [sonoff.tech](https://sonoff.tech)  
Service email: [support@itead.cc](mailto:support@itead.cc)  
MADE IN CHINA

---

## Documents / Resources

	<p><a href="#">SONOFF NS Panel Smart Scene Wall Switch</a> [pdf] User Guide</p> <p>NS Panel Smart Scene Wall Switch, NS Panel, Smart Scene Wall Switch, Scene Wall Switch, Wall Switch, Switch</p>
--	--

## References

- [User Manual](#)