



# SONOFF NS Panel Series Smart Scene Wall Switch User Manual

[Home](#) » [SonOFF](#) » SONOFF NS Panel Series Smart Scene Wall Switch User Manual 



## NS Panel Series Smart Scene Wall Switch User Manual



## Contents

- 1 NS Panel Series Smart Scene Wall Switch
- 2 Product Introduction
- 3 Features
- 4 Operating Instruction
- 5 Operation Guide
- 6 Bind Temperature Control Device
- 7 Specifications
- 8 Common Problems
- 9 Warranty Conditions
- 10 EU Declaration of Conformity
- 11 Documents / Resources
  - 11.1 References
- 12 Related Posts

## NS Panel Series Smart Scene Wall Switch

### Dear customer,

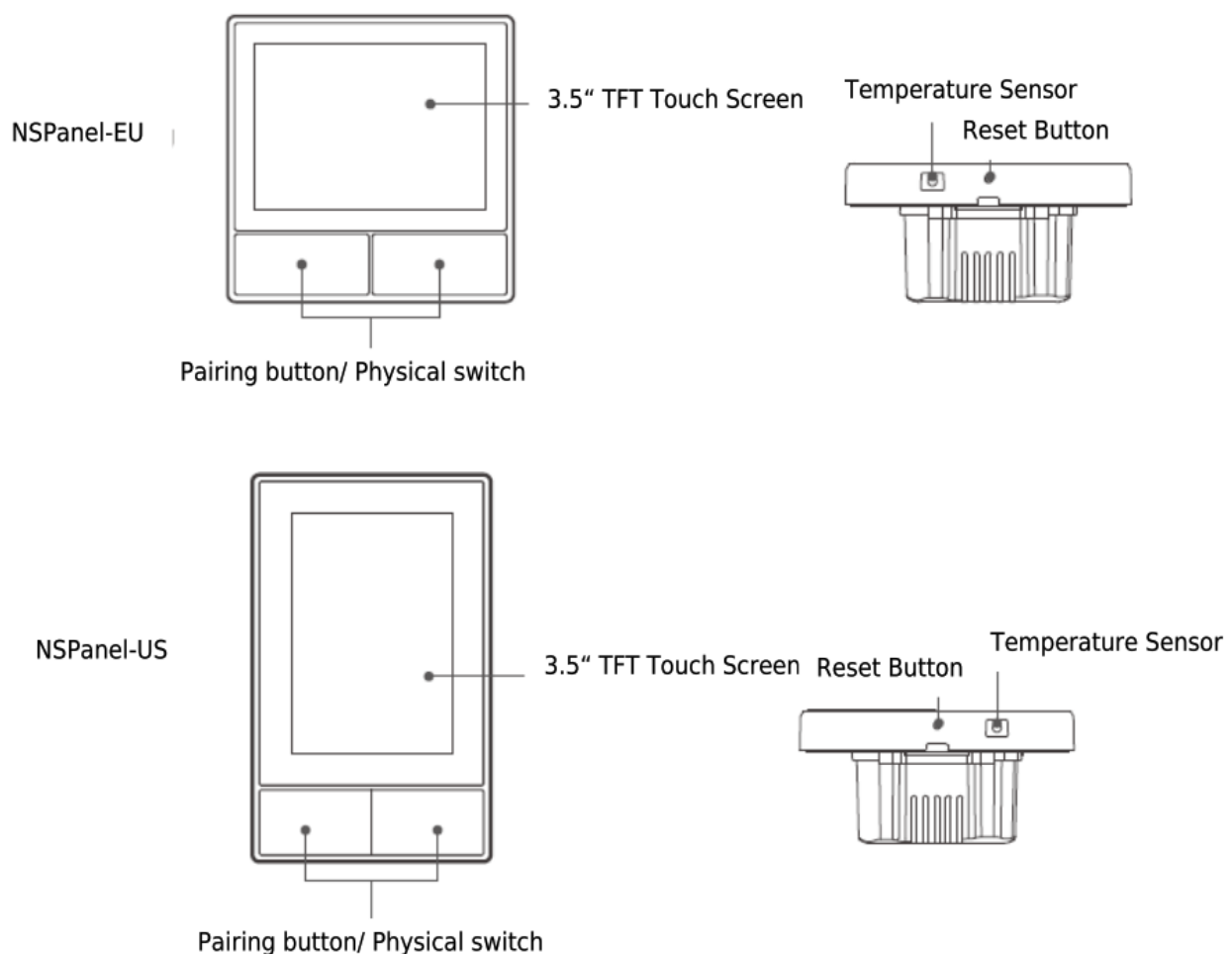
Thank you for purchasing our product. Please read the following instructions carefully before first use and keep this user manual for future reference. Pay particular attention to the safety instructions. If you have any questions or comments about the device, please contact the customer line.

✉ [www.alza.co.uk/kontakt](mailto:www.alza.co.uk/kontakt)

☎ +44 (0)203 514 4411

Importer Alza.cz a.s., Jankovcova 1522/53, Holešovice, 170 00 Praha 7, [www.alza.cz](http://www.alza.cz)

## Product Introduction



⚠ The device weight is less than 1 kg. The installation height of less than 2m is recommended.

## Features

NSPanel is a dual-channel smart touch control panel integrating three interactive methods, screen touching, voice control and App control. Users can control the device types including smart switch and plugs (heating/cooling) under the eWeLink account. Users are able to control multiple smart devices through adding widgets on their smart phones, such as turn on/off, schedule on/off the connected devices and share them with families to control.



Remote Control



Single/Countdown Timing



Voice Control



Share Control



3.5" TFT Touch Screen



Adding Widgets



Smart Scene



Thermostat



Inching Mode



Interlock



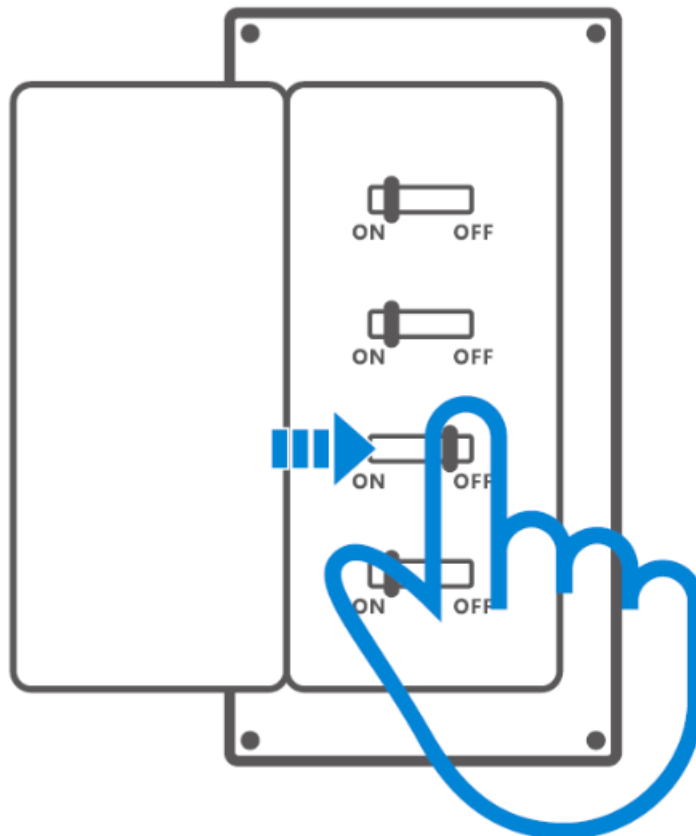
Group Control



LAN Control

## Operating Instruction

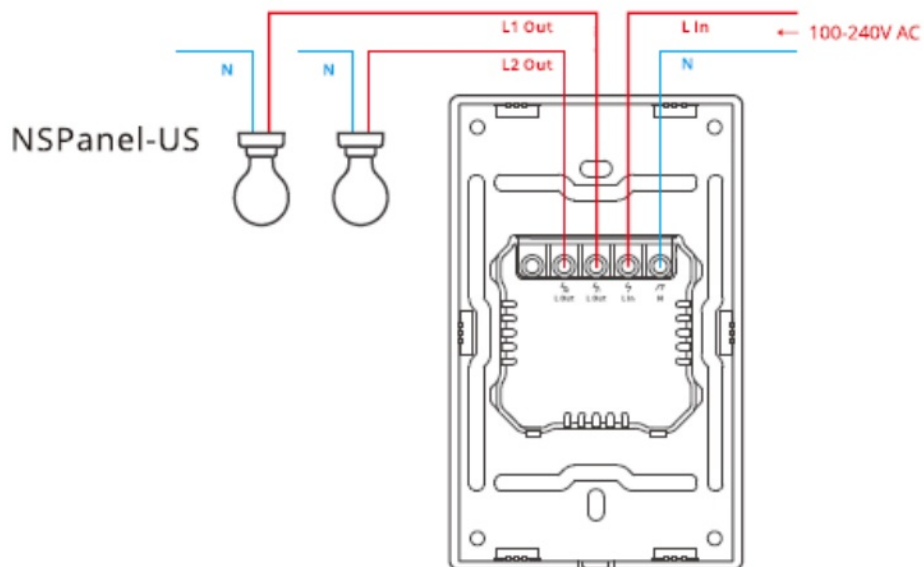
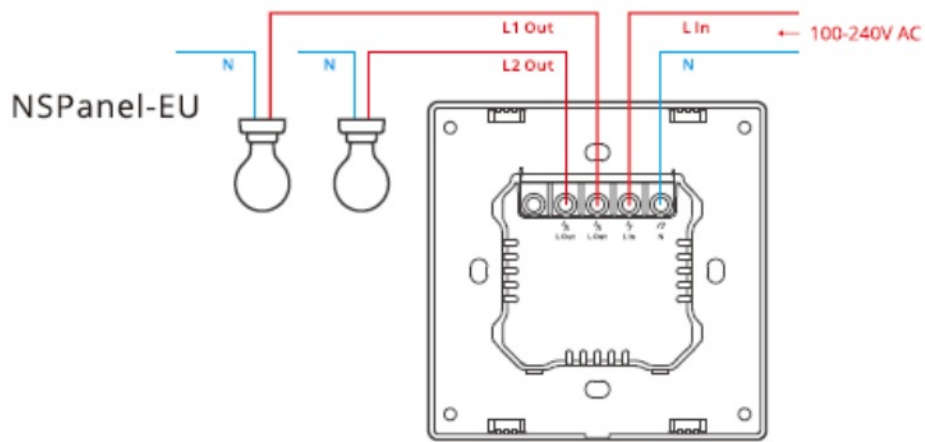
### 1. Power off



Please install and maintain the device by a professional electrician. To avoid electric shock hazard, do not operate any connection or contact the terminal connector while the device is powered on !

### 2. Wiring instruction

## Light fixture wiring instruction:



⚠ Make sure all wires are connected correctly.

### 3. Download the eWeLink App



Android™ & iOS

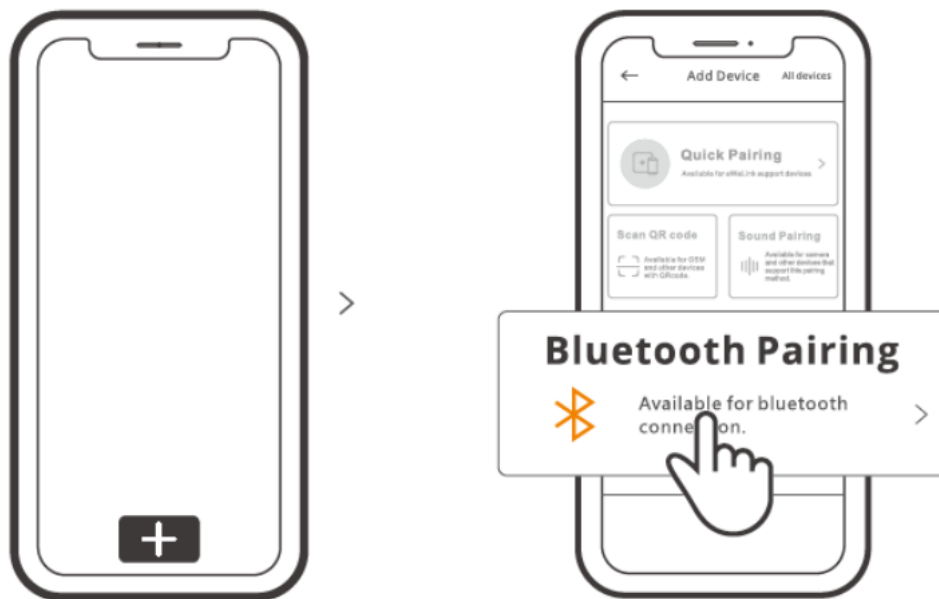
<http://app.coolkit.cc/dl.html>

### 4. Power on



After powering on, the device will enter the Bluetooth pairing mode during the first use. The screen status is shown in the above image.

## 5. Add the device



Tap “+” and select “blueetooth pairing”, then operate following the prompt on the App.

## Operation Guide

### Drop down

Settings of the screen brightness and sleep time



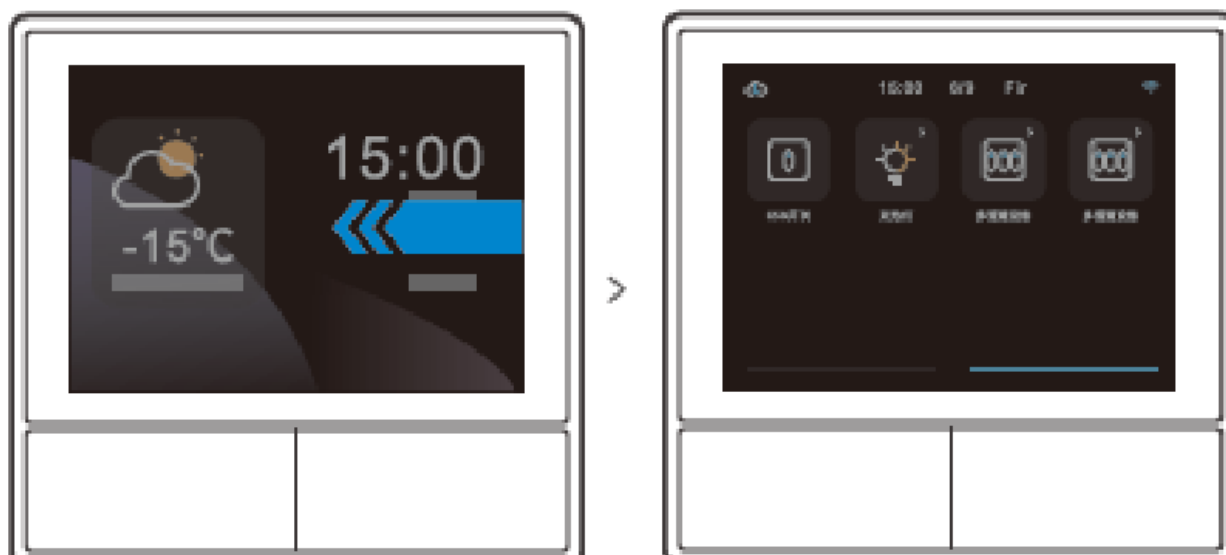
### Swipe right

After adding temperature controller function in the App, you can set the added temperature controller on the device.



### Swipe left

After adding widgets in the App, you can control the added widgets on the device.



## Bind Temperature Control Device

There is a built-in temperature sensor in the NSPanel to monitor the room temperature and you can maintain the room temperature by controlling the cooler/heater, which is connected with smart switches or smart plus and these devices are required to pair with eWeLink App.

Access the NSPanel interface in the App and tap “Thermostat” to select the devices in the Action device list. All the listed devices are supported to bind with the Thermostat (including two NSPanel channels). You can only select one device or one channel of the multi-channel device to execute and then choose heater or cooler as the Device type.



Active the Thermostat after selecting the Action device and Device type, then you can see there are two modes to control the temperature which are Manual mode and Auto mode.

### Manual mode:

Allow you to adjust the temperature manually whenever you want and then the Thermostat will execute to maintain the manual setting temperature.

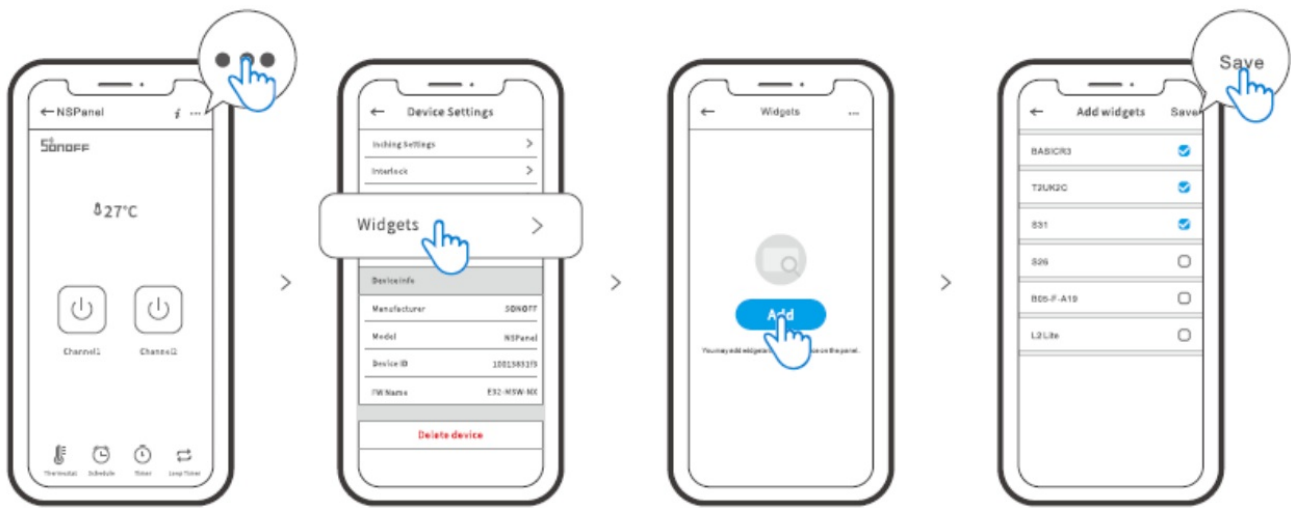
### Auto mode:

Allow you to set 6 target temperature at most by tapping “Add” to set the temperature respectively. Once set, all setting will execute automatically at certain time duration and cannot be controlled manually unless switched to the Manual mode. The binding devices will turn off when they are out of schedule.

ⓘ Actual room temperature will be  $\pm 1^{\circ}\text{C}$ . For example, the setting temperature is  $26^{\circ}\text{C}$  but the actual temperature range is between  $25^{\circ}\text{C}$  and  $27^{\circ}\text{C}$ .

## Add Widgets

NSPanel can be added 8 widgets in the screen for Quick Control. The form of widget can be single device, group devices of the congeneric devices and Tap to Perform Scene. In addition, you can control more features of the multi-gang and lighting devices in the secondary interface.



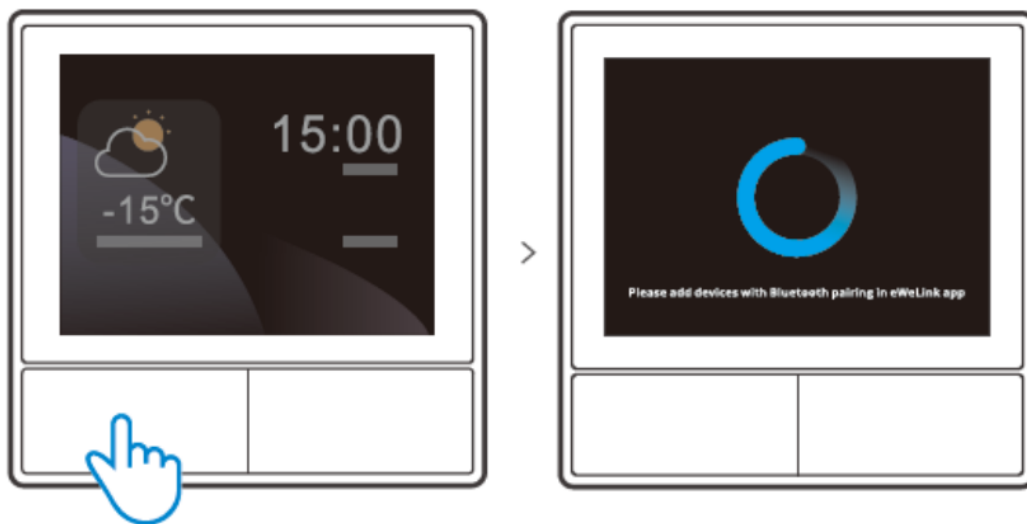
## Specifications

Model	NSPanel-EU, NSPanel-US
Input	100-240V~50/60Hz 4A Max
Output	100-240V~50/60Hz 2A/Gang 4A/Total
LED load	150W/110V/Gang, 300W/110V/Total 300W/220V/Gang, 600W/220V/Total
Wi-Fi	IEEE 802.11 b/g/n 2.4Ghz
Bluetooth Standard	4.2 BLE
Screen Size	3.5" (Capative Touch Panel)
Screen Resolution	480*320px
Operating systems	Android & iOS
Shell materials	PC V0 + CRS + Toughened Glass
Dimension	NSPanel-EU: 86x86x41.7mm NSPanel-US: 120x74x41.7mm

### Re-establish Pairing of the NSPanel

When you want to change the NSPanel's account or connected WIFI, it requires you to pair the NSPanel again. Press any bottom of the device for 5s until the screen indicates that it had entered into Bluetooth pairing mode and then release. Now the NSPanel is available for Bluetooth pairing in the eWeLink App.





⚠ The device will exit the Bluetooth pairing mode if not paired within 3mins.

### Factory Reset

Deleting the device on the eWeLink app indicates you restore it to factory setting.

## Common Problems

### Fail to pair Wi-Fi devices to eWeLink App

1. Make sure the device is in pairing mode. After three minutes of unsuccessful pairing, the device will automatically exit pairing mode.
2. Please turn on location services and allow location permission. Before choosing the Wi-Fi network, location services should be turned on and location permission should be allowed. Location information permission is used to obtain Wi-Fi list information. If you click Disable you will not be able to add devices.
3. Make sure your Wi-Fi network runs on the 2.4GHz band.
4. Make sure you entered a correct Wi-Fi SSID and password, no special characters contained. Wrong password is a very common reason for pairing failure.
5. The device shall get close to the router for a good transmission signal condition while pairing

## Warranty Conditions

A new product purchased in the Alza.cz sales network is guaranteed for 2 years. If you need repair or other services during the warranty period, contact the product seller directly, you must provide the original proof of purchase with the date of purchase.

**The following are considered to be a conflict with the warranty conditions, for which the claimed claim may not be recognized:**

- Using the product for any purpose other than that for which the product is intended or failing to follow the instructions for maintenance, operation, and service of the product.
- Damage to the product by a natural disaster, the intervention of an unauthorized person or mechanically through the fault of the buyer (e.g., during transport, cleaning by inappropriate means, etc.).
- Natural wear and aging of consumables or components during use (such as batteries, etc.).
- Exposure to adverse external influences, such as sunlight and other radiation or electromagnetic fields, fluid

intrusion, object intrusion, mains overvoltage, electrostatic discharge voltage (including lightning), faulty supply or input voltage and inappropriate polarity of this voltage, chemical processes such as used power supplies, etc.

- If anyone has made modifications, modifications, alterations to the design or adaptation to change or extend the functions of the product compared to the purchased design or use of non-original components.

## EU Declaration of Conformity

### Identification data of the manufacturer's / importer's authorized representative:

Importer: Alza.cz a.s.

Registered office: Jankovcova 1522/53, Holešovice, 170 00 Prague 7

CIN: 27082440

### Subject of the declaration:

Title: Smart Scene Wall Switch

Model / Type: NSPanel

**The above product has been tested in accordance with the standard(s) used to demonstrate compliance with the essential requirements laid down in the Directive(s):**

Directive No. 2014/53/EU

Directive No. 2011/65/EU as amended 2015/863/EU

Prague, 22.12. 2022

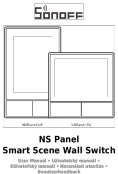


## WEEE

This product must not be disposed of as normal household waste in accordance with the EU Directive on Waste Electrical and Electronic Equipment (WEEE- 2012/19/EU). Instead, it shall be returned to the place of purchase or handed over to a public collection point for the recyclable waste. By ensuring this product is disposed of correctly, you will help prevent potential negative consequences for the environment and human health, which could otherwise be caused by inappropriate waste handling of this product. Contact your local authority or the nearest collection point for further details. Improper disposal of this type of waste may result in fines in accordance with national regulations.







## Documents / Resources

	<p><a href="#">SONOFF NS Panel Series Smart Scene Wall Switch</a> [pdf] User Manual</p> <p>NS Panel Series, Smart Scene Wall Switch, NS Panel Series Smart Scene Wall Switch, Scene Wall Switch, Wall Switch, Switch, NSPanel-EU, NSPanel-US</p>
---	--

## References

-  [alza.at](https://alza.at)

-  [alza.co.uk](https://alza.co.uk)
-  [alza.de](https://alza.de)
-  [alza.hu](https://alza.hu)
-  [alza.sk](https://alza.sk)

Manuals+.