



## SONOFF MS01 Soil Moisture Sensor User Manual

[Home](#) » [SonOFF](#) » SONOFF MS01 Soil Moisture Sensor User Manual 



### Contents

- [1 MS01 Soil Moisture Sensor](#)
- [2 Product Introduction](#)
- [3 Instruction](#)
- [4 Specifications](#)
- [5 Warranty Conditions](#)
- [6 EU Declaration of Conformity](#)
- [7 Documents / Resources](#)
  - [7.1 References](#)
- [8 Related Posts](#)

## Dear customer,

Thank you for purchasing our product. Please read the following instructions carefully before first use and keep this user manual for future reference. Pay particular attention to the safety instructions. If you have any questions or comments about the device, please contact the customer line.

✉ [www.alza.co.uk/kontakt](mailto:www.alza.co.uk/kontakt)

☎ +44 (0)203 514 4411

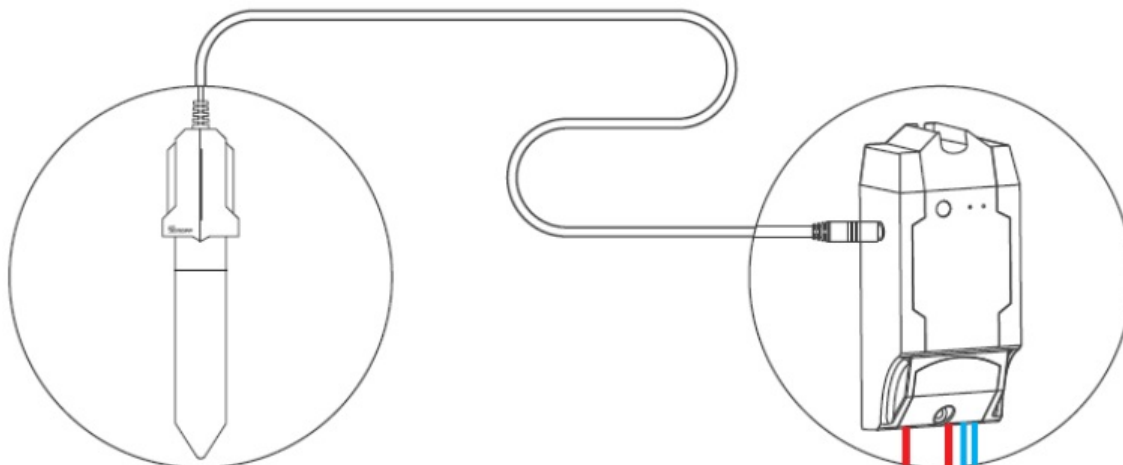
Importer Alza.cz a.s., Jankovcova 1522/53, Holešovice, 170 00 Praha 7, [www.alza.cz](http://www.alza.cz)

## Product Introduction

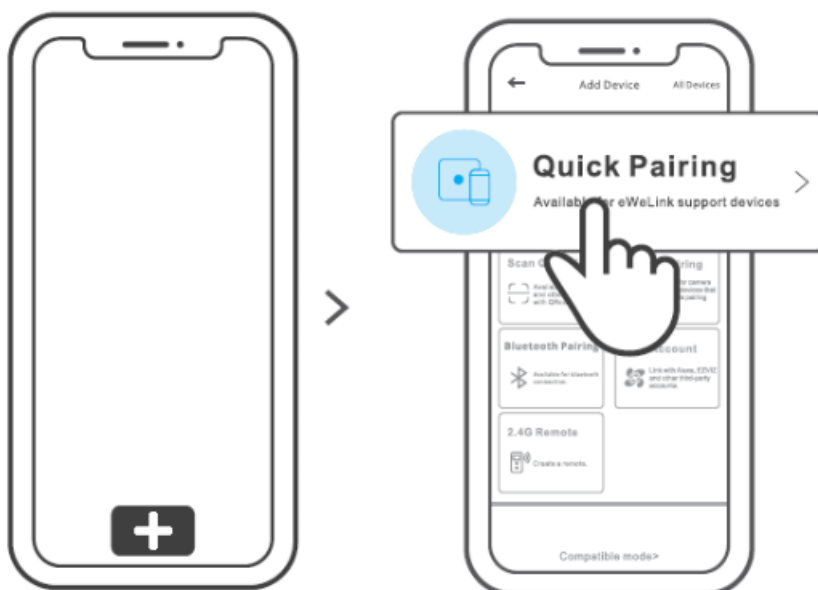
MS01 is a soil moisture sensor that can be connected with SONOFF TH10/TH16 smart switch to work. You can check the soil relative humidity value remotely and preset the humidity threshold value in eWeLink App. It can also assist to automatically water through the feature of “automatic control” and “smart scene” in the App, as well as works with Google Assistant to make you check humidity through your voice.

## Instruction

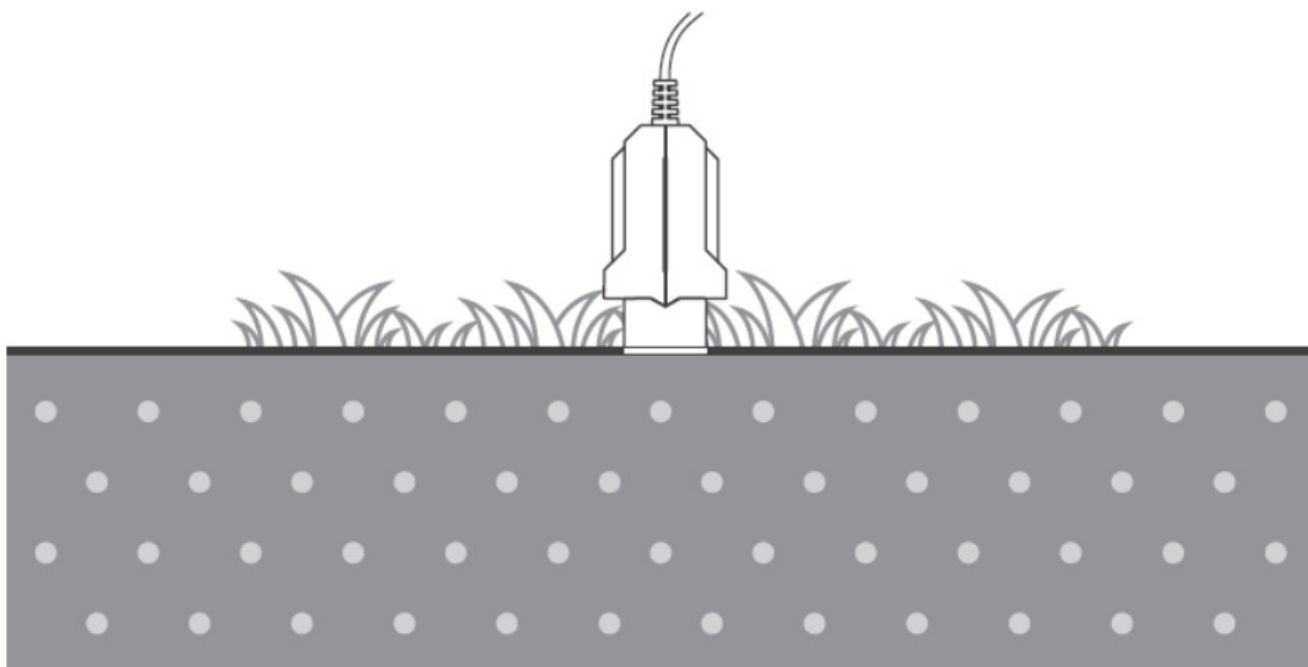
1. Connect the sensor with TH10/TH16



2. Add TH10/TH16 to eWeLink APP.



3. Insert MS01 into soil vertically and keep the white line on the sensor in the same level with the soil.



⚠ The sensor can be extended with the extension cable (AL560\*2), up to 10M. (AL560 is not included in the package, please order separately).

## Specifications

Model	MS01
Working Voltage	3.3V (TH10/TH16 Output)
Connector	Φ2.5mm
Protection Class	IP55
Working Humidity	0%-100% RH
Working Temperature	0°C-60°C
Wire Length	0.5 m
Max. Extension Length	10 m
Material	PC V0
Dimension	130X30X13mm

## Warranty Conditions

A new product purchased in the Alza.cz sales network is guaranteed for 2 years. If you need repair or other services during the warranty period, contact the product seller directly, you must provide the original proof of purchase with the date of purchase.

**The following are considered to be a conflict with the warranty conditions, for which the claimed claim may not be recognized:**

- Using the product for any purpose other than that for which the product is intended or failing to follow the instructions for maintenance, operation, and service of the product.
- Damage to the product by a natural disaster, the intervention of an unauthorized person or mechanically

through the fault of the buyer (e.g., during transport, cleaning by inappropriate means, etc.).

- Natural wear and aging of consumables or components during use (such as batteries, etc.).
- Exposure to adverse external influences, such as sunlight and other radiation or electromagnetic fields, fluid intrusion, object intrusion, mains overvoltage, electrostatic discharge voltage (including lightning), faulty supply or input voltage and inappropriate polarity of this voltage, chemical processes such as used power supplies, etc.
- If anyone has made modifications, modifications, alterations to the design or adaptation to change or extend the functions of the product compared to the purchased design or use of non-original components.

## EU Declaration of Conformity

### Identification data of the manufacturer's / importer's authorized representative:

Importer: Alza.cz a.s.

Registered office: Jankovcova 1522/53, Holešovice, 170 00 Prague 7

CIN: 27082440

### Subject of the declaration:

Title: Soil Moisture Sensor

Model / Type: MS01

**The above product has been tested in accordance with the standard(s) used to demonstrate compliance with the essential requirements laid down in the Directive(s):**

Directive No. 2014/53/EU

Directive No. 2011/65/EU as amended 2015/863/EU

Prague, 22.12. 2022

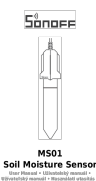


## WEEE






This product must not be disposed of as normal household waste in accordance with the EU Directive on Waste Electrical and Electronic Equipment (WEEE – 2012/19 / EU). Instead, it shall be returned to the place of purchase or handed over to a public collection point for the recyclable waste. By ensuring this product is disposed of correctly, you will help prevent potential negative consequences for the environment and human health, which could otherwise be caused by inappropriate waste handling of this product. Contact your local authority or the nearest collection point for further details. Improper disposal of this type of waste may result in fines in accordance with national regulations.



## Documents / Resources

	<p><a href="#">SONOFF MS01 Soil Moisture Sensor</a> [pdf] User Manual</p> <p>MS01, Soil Moisture Sensor, MS01 Soil Moisture Sensor, Moisture Sensor, Sensor</p>
---	---

## References

-  [alza.at](https://alza.at)
-  [alza.co.uk](https://alza.co.uk)
-  [alza.de](https://alza.de)
-  [alza.hu](https://alza.hu)
-  [alza.sk](https://alza.sk)

Manuals+.