



Contents [[hide](#)]

- [1 SonoFF MINIRBS Matter Enabled Shutter Control Module](#)
- [2 Product Specifications](#)
- [3 Product Usage Instructions](#)
- [4 Introduction](#)
- [5 Installation](#)
- [6 Matter Ecosystem User Guide](#)
- [7 FCC Compliance](#)
- [8 Documents / Resources](#)
 - [8.1 References](#)



SonoFF MINIRBS Matter Enabled Shutter Control Module



Product Specifications

Model	MINI-RBS, MINI-RBS-MS
MCU	ESP32
Rating	100-240V~ 50/60Hz 1A Max
Wireless connectivity	Wi-Fi IEEE 802.11 b/g/n 2.4GHz
Net weight	25.1g
Product dimension	39.5x33x16.8mm
Color	White
Casing material	PC
Applicable place	Indoor
Working temperature	10T40 (-10°C~40°C)
Working humidity	5-95%RH, non-condensing
Working height	Less than 2000m

Certification	CE/FCC/RoHS
FCC ID	2APN5-MINIRBS
Pollution degree	2
Rated impulse voltage	4kV
Automatic action	10000 Cycles
Control type	Type 1. B
Diameter of wiring(recommend)	18AWG to 14AWG SOL/STR copper conductor only

Product Usage Instructions

Adding the Device

1. Scan the QR code on the device to add it.
2. Power on the device and long-press the button for 5 seconds.
3. Check the Wi-Fi LED indicator flashing status (Two short and one long).
4. Search for the device and start connecting.
5. Select the Wi-Fi network and enter the password.
6. The device will be added completely.

Factory Reset

1. To reset to factory settings, delete the device in the eWeLink App.

Introduction

This compact smart curtain retrofit is designed to fit perfectly into an EU-type mounting box and supports motors with a maximum current of 1A as a load. It offers WiFi remote control and is compatible with the Matter platform, enabling seamless integration across multiple smart home systems. Simply connect the device to the switch and motor correctly to easily upgrade ordinary electric roller shutters to smart systems.



Remote Control



Percentage Control



Timer Schedule



Deviation Calibration



Voice Control



eWeLink Remote



Smart Scene



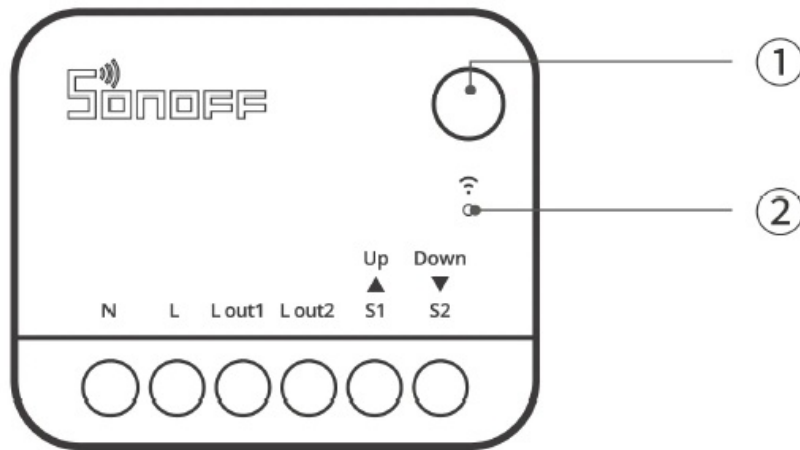
Compatible with
Various Curtain
Types

Button

- Press and hold for 5 seconds: The Device enters the pairing mode. (Pairing time 10 minutes)
- Short-press three times: Switch the external switch type.

LED indicator (Blue)

- **Keeps on:** Online.
- **Flashes once:** Offline
- **Flashes twice:** LAN
- **Flashes two short and one long:** Device is in pairing mode.
- **Breathing mode (press and hold the button for 10 seconds):** The device successfully marks the “fully open” position of the curtain.
- **Flashes three times (short press the button once while in breathing mode):** The device successfully marks the curtain in the “fully closed” position.
- **Flashes three times:** The switch type is successfully switched.

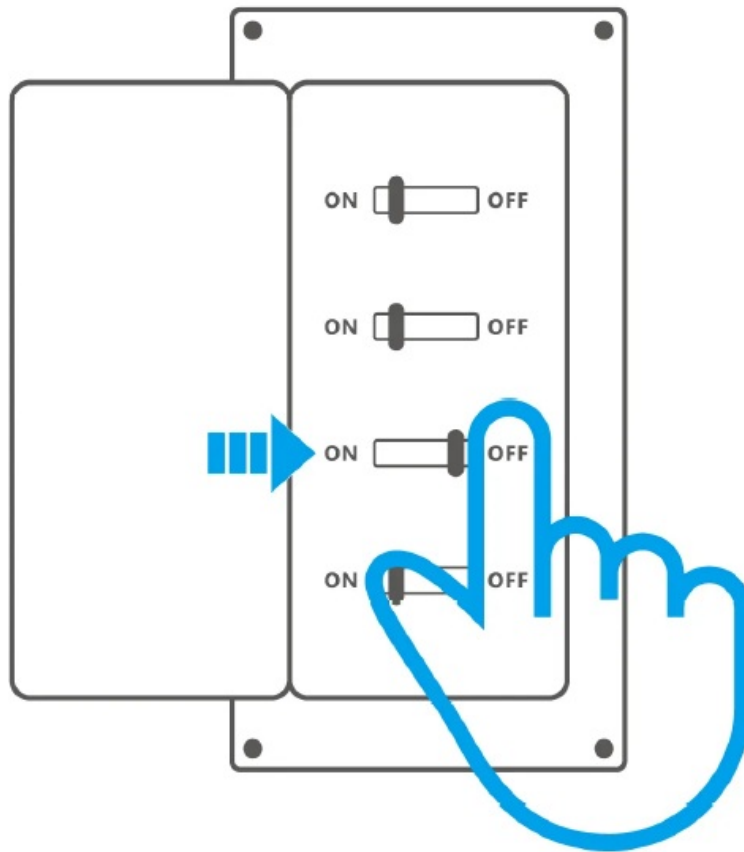


The products is designed to be completely installed into a flush mounted box and enclosed with a cover plate or switch that fullfill the correspoding national standard requirement. There shall be no exposure of any part of the product after installation. Les produits sont conçus pour être complètement installés dans une boîte encastrée et enfermés avec une plaque de couvercle ou un commutateur qui remplissent les exigences correspondantes de la norme nationale. Il n'y aura aucune explosion d'une parties quelconque du produit après installation.

- This product is only suitable for safe use at altitudes below 2000m.

Installation

Power off



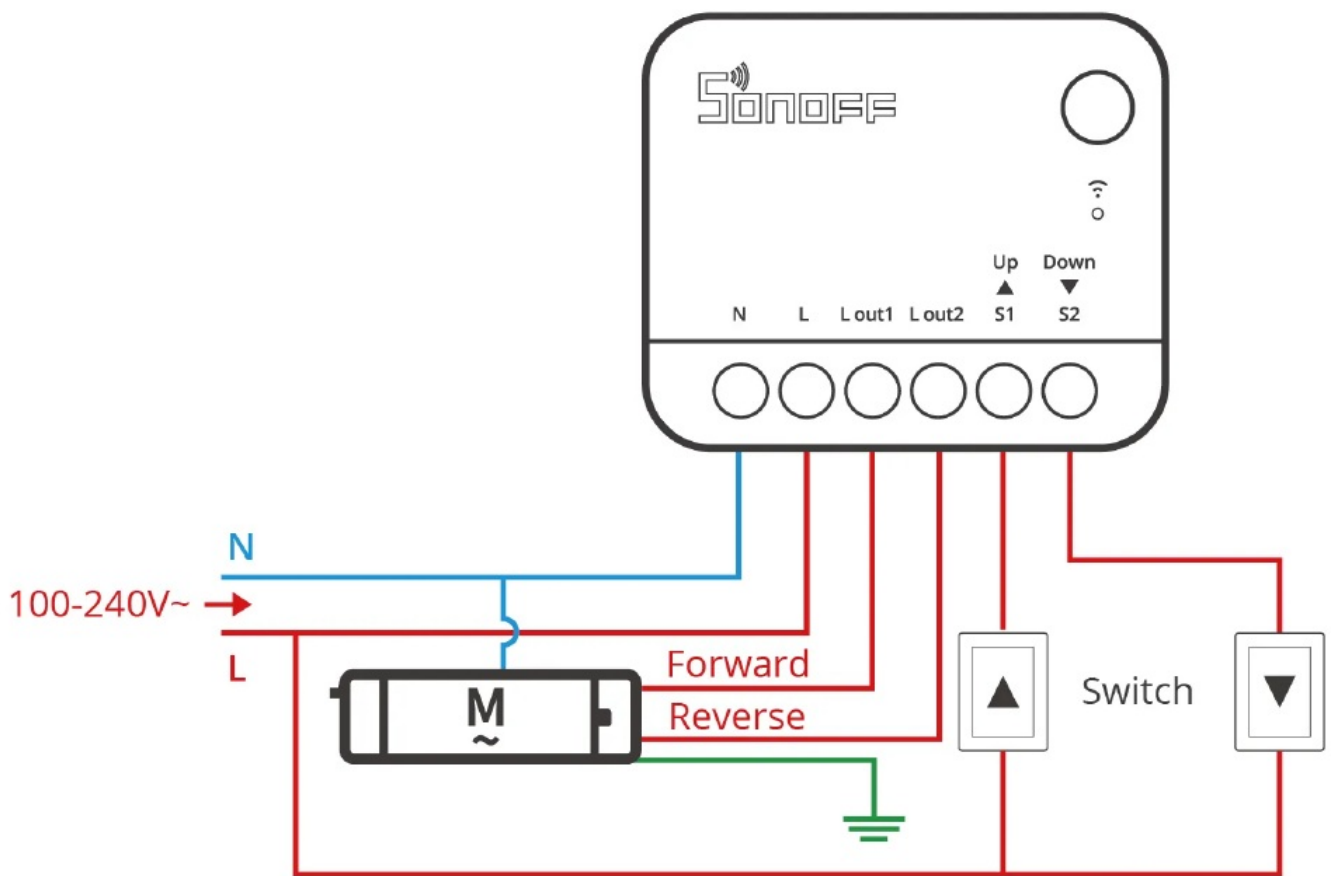
WARNING

Please install and maintain the device by a professional electrician. To avoid electric shock hazards, do not operate any connection or contact the terminal connector while the device is powered on.

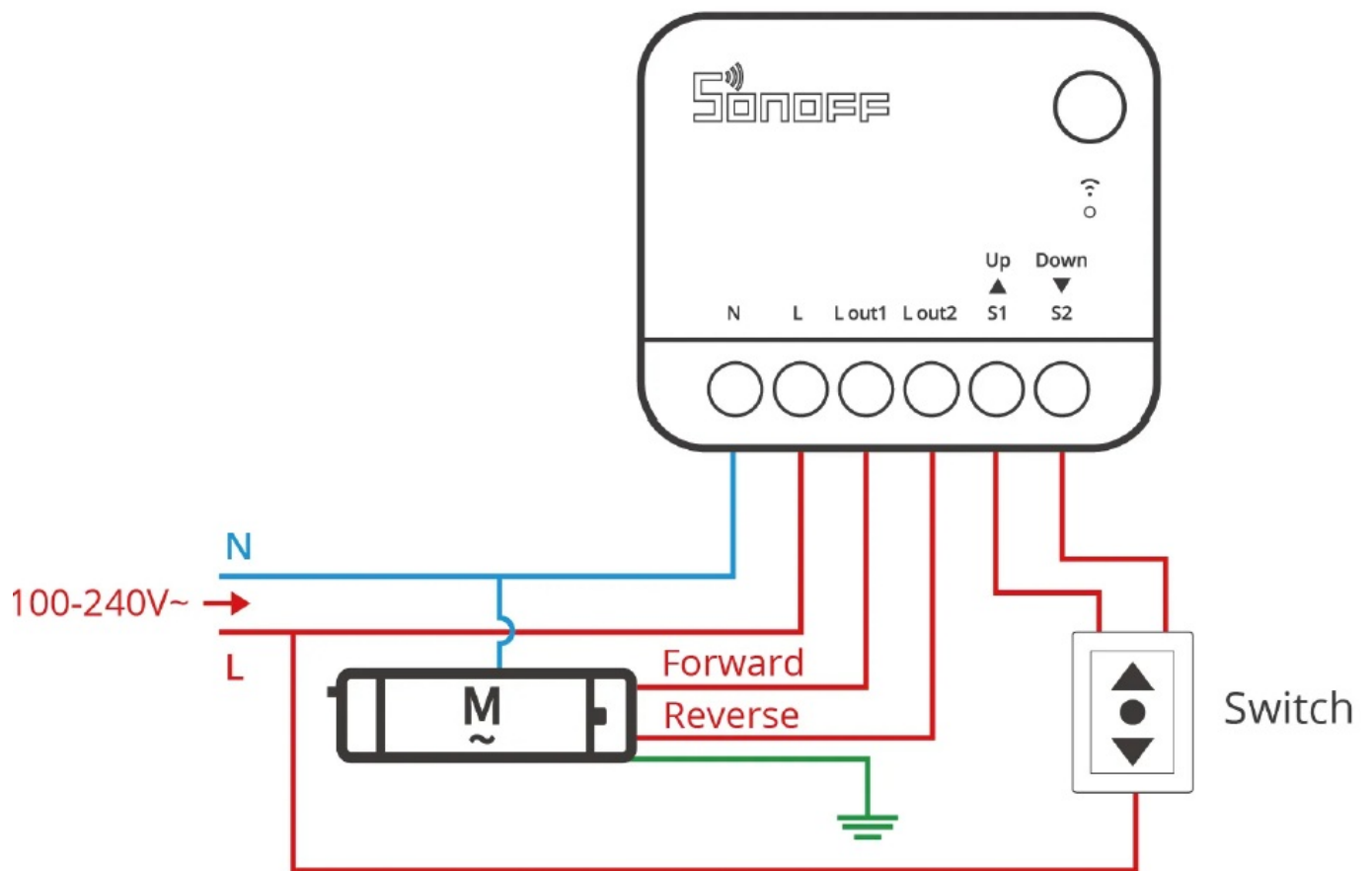
Wiring instruction

To ensure the safety of your electrical installation, it's essential that either a Miniature Circuit Breaker (MCB) or a Residual Current operated Circuit-breaker with Integral Overcurrent protection(RCBO) with an electrical rating of 1A has been installed before the MINI-RBS, MINI-RBS-MS.

Momentary Switch Wiring



Three-Position Rocker Switch Wiring



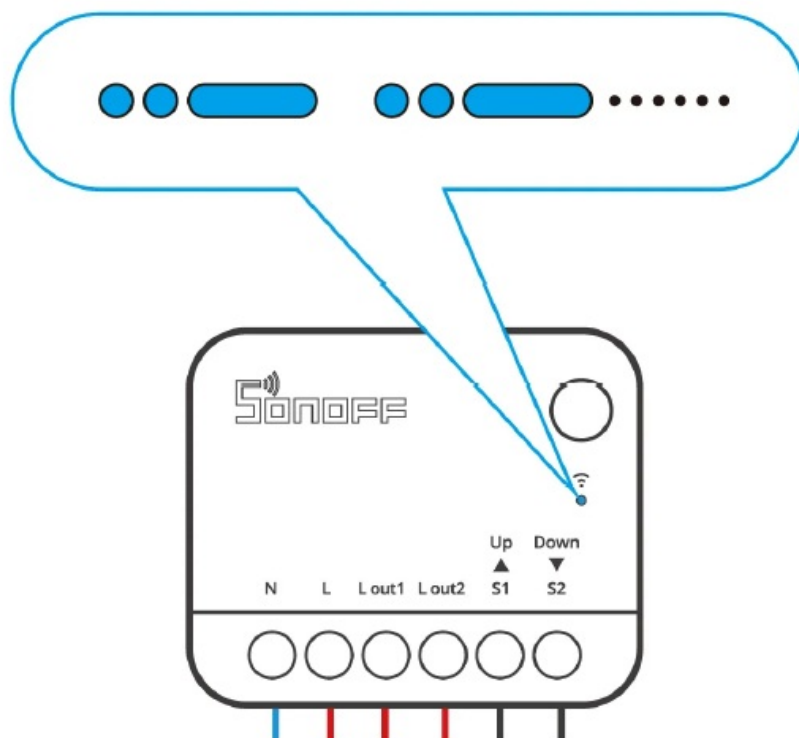
- Make sure all wires are connected correctly.

Instructions for wiring symbols

Terminals		Wires	
N	Neutral Line	N	Neutral Line
L	Live Line	L	Live Line 100~240V
L out1	Live Output Terminal__1(100~240V)	Forward Line	Motor Forward Line
L out2	Live Output Terminal__2(100~240V)	Reverse Line	Motor Reverse Line
S1	Switch_1 (Forward Control)		
S2	Switch_2 (Reverse Control)		

Power on

When the device is used for the first time, it will enter pairing mode by default after being powered on. At this time, the LED indicator will flash in a pattern of “two short and one long”.



The device will exit the Pairing Mode if not paired within 10mins. If you want to enter this mode, please long press button for about 5s until the LED indicator changes in a cycle of two short and one long flash and release.

- As the maximum one-way allowable continuous operation time for the motor in this device is 2 minutes, please pause the operation before the curtain reaches its limit position to avoid damaging the motor.

Check the Device Status

1. External switch type

1. The types of external switches supported are three-position rocker switches and momentary switches, with the default setting from the factory being the rocker switch (Edge Mode).
2. The method to switch the external switch type: Short press the button three times and the blue light flashes 3 times, then the switch type is switched successfully.
3. External switch trigger mode switching sequence (cycle): Edge Mode → Pulse Mode → Following Mode

2. Roller shutter direction test

Press the external switch to check if the roller shutter moves in the correct direction. If it does not, power off the device, swap the Lout1 and Lout2 wires, and test again.

Important Prerequisite Confirmation: Please select the appropriate section based on the ecosystem you are using (Matter or eWeLink). Follow the corresponding steps to complete the “Add Device” and “Travel Calibration” operations.

Matter Ecosystem User Guide

Add Device

Open a Matter-compatible App to scan the Matter QR code on the Quick Guide or the device itself to add the device.



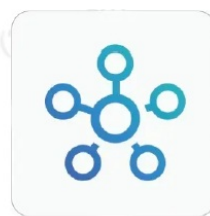
Add to Apple via
Matter



Add to Google via
Matter



Add to Alexa via
Matter



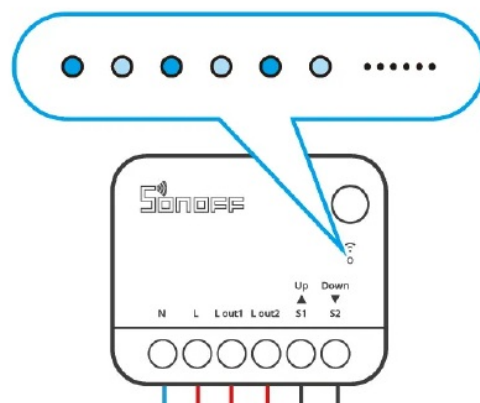
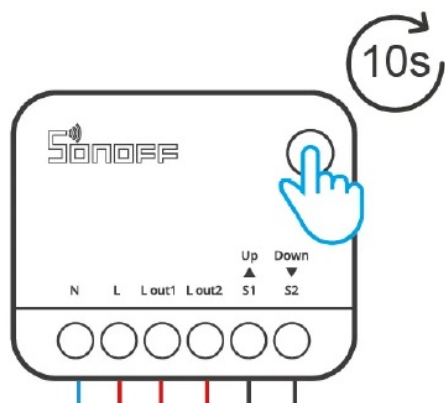
Add to SmartThings
via Matter

Travel Calibration

- Using percentage control requires travel calibration. Please select one of the following two calibration options based on your needs.

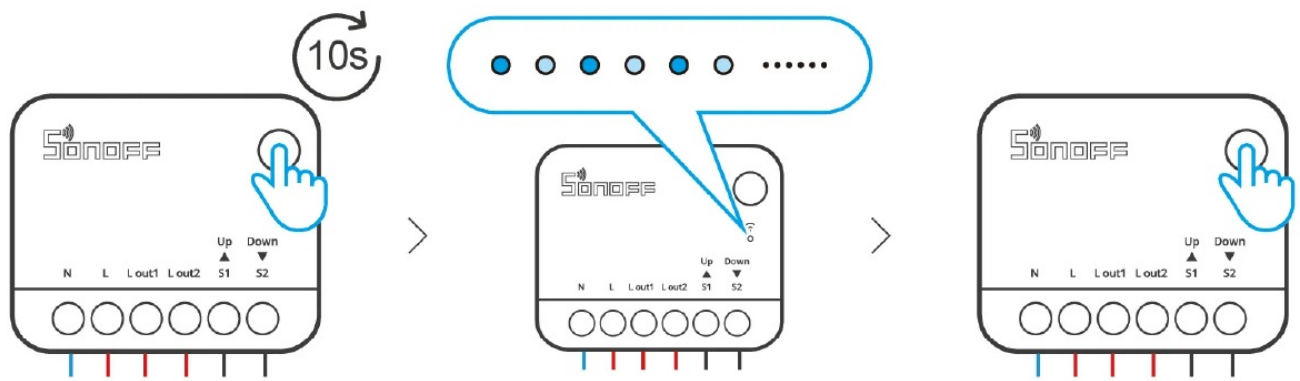
Method 1:Automatic calibration

- Press and hold the device button for more than 10 seconds until the LED indicator enters breathing mode. The device will then automatically control the motor for calibration.

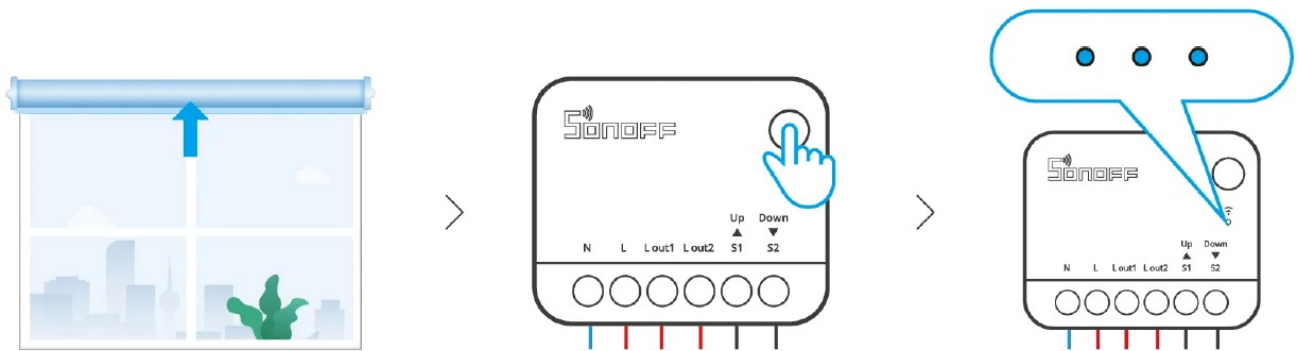


Method 2:Manual calibration

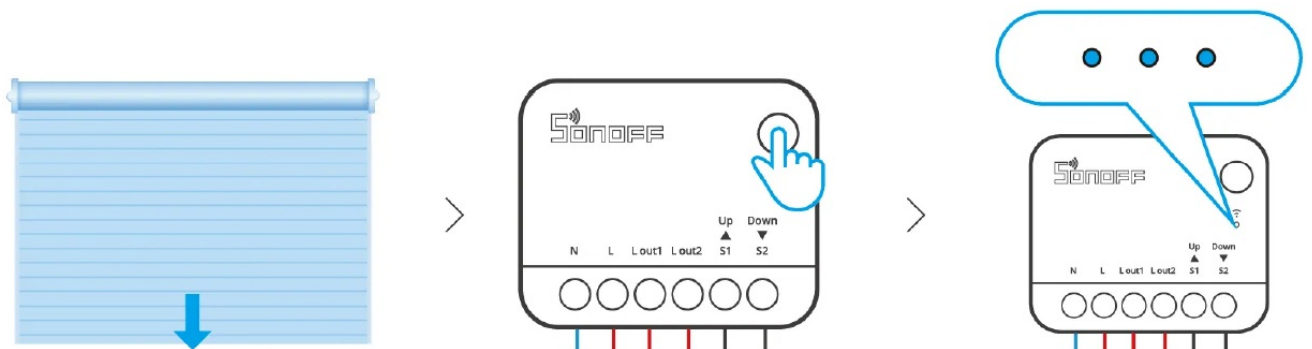
- Press and hold the device button for more than 10 seconds until the LED indicator enters breathing mode. Then, briefly press the device button to enter “Manual Calibration” mode.



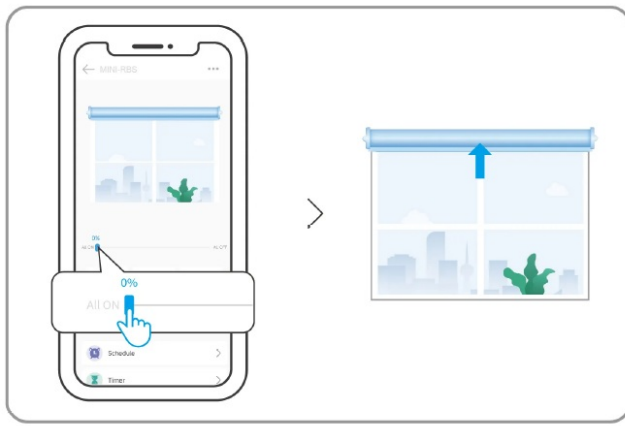
2. Manually open the curtains completely, then briefly press the device button until the LED indicator flashes three times.



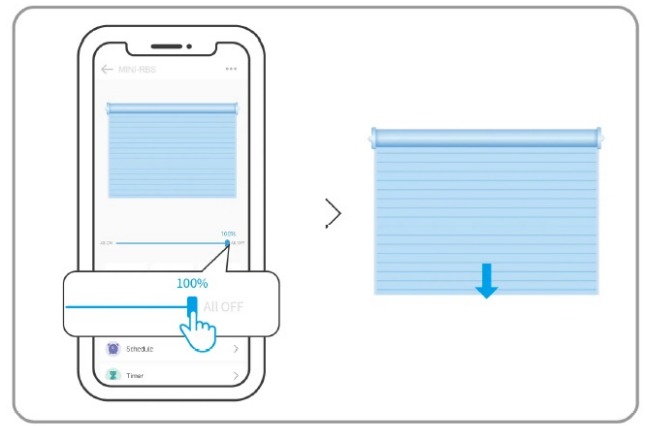
3. Wait for the device to automatically close the curtains, then briefly press the device button again until the LED indicator flashes three times. This completes the “Manual Calibration.”



4. Control the device through the App and check the fully open or fully closed positions. If there is any discrepancy, you can recalibrate.



fully open



fully closed

Add Device

- Download the eWeLink App
- Please download the “eWeLink” App from the Google Play Store or the Apple App Store.

FCC Compliance

This device complies with part 15 of the FCC Rules. Ensure proper operation with the stated conditions to avoid interference issues.

FCC Radiation Exposure

Follow the FCC radiation exposure limits and maintain a minimum distance of 20 cm between the equipment and your body for safe operation.

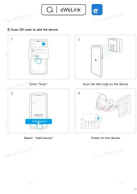
EU Declaration of Conformity

The device is compliant with Directive 2014/53/EU. Refer to the provided internet address for the full EU declaration of conformity.

WEEE Disposal and Recycling Information


Properly dispose of the equipment according to WEEE regulations. Keep a minimum separation distance of 20 cm between the antenna and user's body during normal use.


Documents / Resources

	<p>SonoFF MINIRBS Matter Enabled Shutter Control Module [pdf] User Guide</p> <p>e</p> <p>2APN5-MINIRBS, 2APN5MINIRBS, minirbs, MINIRBS Matter Enabled Shutter Control Module, MINIRBS, Matter Enabled Shutter Control Module, Enabled Shutter Control Module, Shutter Control Module, Control Module, Module</p>
-----------------------------------------------------------------------------------	----------------------------------------------------------------------------------------------------------------------------------------------------------------------------------------------------------------------------------------------------------------------------------------------------------------------------------

References

- [User Manual](#)

 SonOFF

 2APN5-MINIRBS, 2APN5MINIRBS, Control Module, Enabled Shutter Control Module, Matter Enabled Shutter Control Module, minirbs, MINIRBS Matter Enabled Shutter Control Module, Module, Shutter Control Module, SonOFF

Leave a comment

Your email address will not be published. Required fields are marked *

Comment *

Name

Email

Website

☐ Save my name, email, and website in this browser for the next time I comment.

Post Comment

Search:

e.g. whirlpool wrf535swhz

Search

[Manuals+](#) | [Upload](#) | [Deep Search](#) | [Privacy Policy](#) | [@manuals.plus](#) | [YouTube](#)

This website is an independent publication and is neither affiliated with nor endorsed by any of the trademark owners. The "Bluetooth®" word mark and logos are registered trademarks owned by Bluetooth SIG, Inc. The "Wi-Fi®" word mark and logos are registered trademarks owned by the Wi-Fi Alliance. Any use of these marks on this website does not imply any affiliation with or endorsement.