

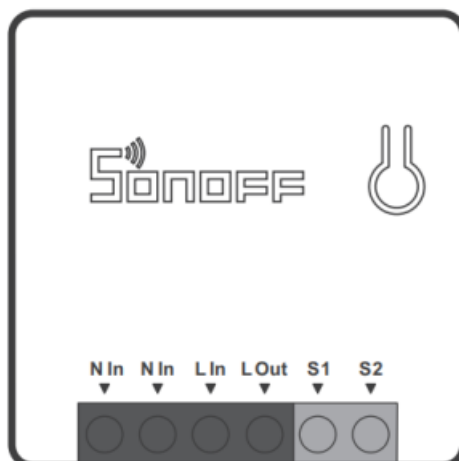


SONOFF MINIR2 Wi-Fi Smart Switch with DIY Mode User Manual

[Home](#) » [SonOFF](#) » SONOFF MINIR2 Wi-Fi Smart Switch with DIY Mode User Manual 



DIY MINIR2
Wi-Fi Smart Switch with DIY Mode
User manual V1.1

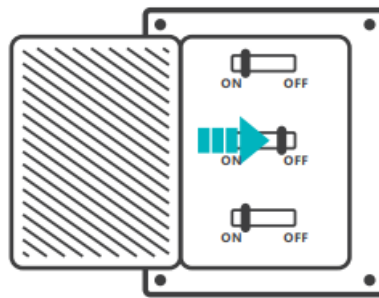


Contents

- [1 Operating Instruction](#)
- [2 Compatible Pairing Mode](#)
- [3 Specifications](#)
- [4 Product Introduction](#)
- [5 Wi-Fi LED indicator status instruction](#)
- [6 Features](#)
- [7 Switch Network](#)
- [8 Factory Reset](#)
- [9 Common Problems](#)
- [10 FCC Warning](#)
- [11 Documents / Resources](#)
- [12 Related Posts](#)

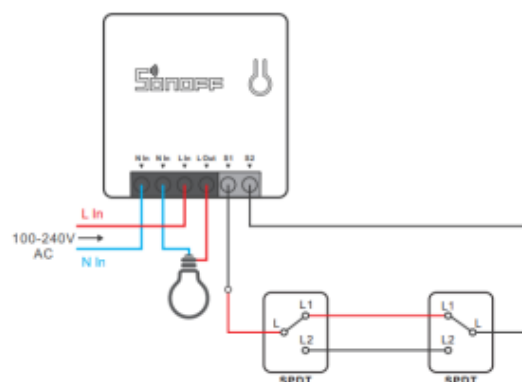
Operating Instruction

1. Power off



To avoid electric shocks, please consult the dealer or a qualified professional for help when installing and repairing! Please do not touch the switch during use.

2. Wiring instruction



Make sure the neutral wire and live wire connection is correct.



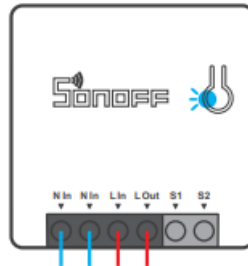
S1/S2 can connect with the rocker light switch or doesn't connect. To ensure I do not connect the neutral wire and live wire to it.

3. Download APP



<http://app.coolkit.cc/dl.html>

4. Power on

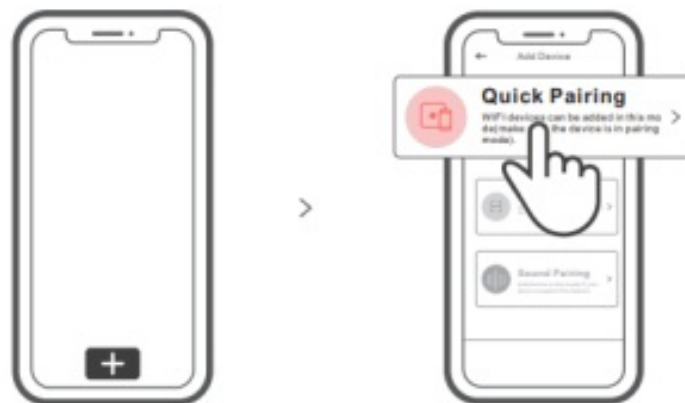


After powering on, the device will enter the quick pairing mode (Touch) during the first use. The Wi-Fi LED indicator changes in a cycle of two short and one long flash and release.



The device will exit the quick pairing mode (Touch) if not paired within 3mins. If you want to enter this mode, please long press the manual button for about 5s until the Wi-Fi LED indicator changes in a cycle of two short and one long flash and release.

5. Add the device



Tap “+” and select “Quick Pairing”, then operate following the prompt on the APP.

Compatible Pairing Mode

If you fail to enter Quick Pairing Mode (Touch), please try “Compatible Pairing Mode ” to pair.

1. Long press the Pairing button for 5s until the Wi-Fi LED indicator changes in a cycle of two short flashes and one long flash and release. Long press the Pairing button for 5s again until the Wi-Fi LED indicator flashes quickly. Then, the device enters Compatible Pairing Mode.
2. Tap “+” and select “Compatible Pairing Mode ” on APP.

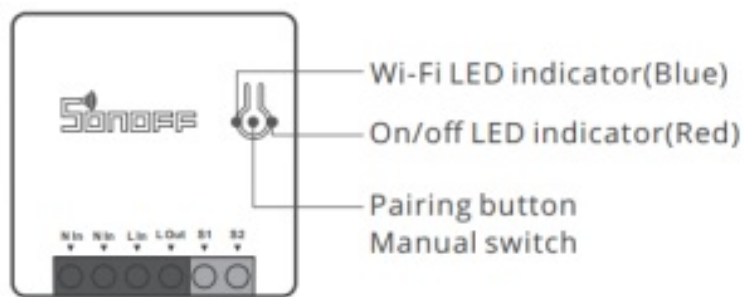
Select Wi-Fi SSID with ITEAD-***** and enter the password 12345678, and then go back to eWeLink APP and

tap “Next”. Be patient until pairing completes.

Specifications

Model	MINIR2
Input	100.240V AC 50/60Hz 10A Max
Output	100.240V AC 50/60Hz 10A Max
Operating systems	Android 8 IOS
Wi-Fi	IEEE 802.11 b/Vn2.4Gliz
Material	PC VO
Dimension	42.6×42.6x20mm

Product Introduction



The device's weight is less than 1 kg.
The installation height of less than 2 m is recommended

Wi-Fi LED indicator status instruction

Wi-Fi LED indicator status	Status instruction
Flashes (one long and two short)	Quick Pairing Mode
Keeps on	The device is connected successfully
Flashes quickly	Compatible Pairing Mode
Flashes quickly once	Unable to discover the router
Flashes quickly twice	Connect to the router but fail to connect to Wi-Fi
Flashes quickly three times	Upgrading

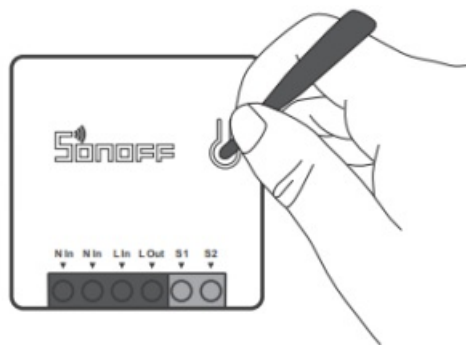
Features

Turn on/off the device from anywhere, schedule power on/off, and share the APP with your family to control.



Switch Network

If you need to change the network, long-press the pairing button for 5s until the Wi-Fi LED indicator changes in a cycle of two short and one long flash and release, then the device enters quick pairing mode and you can pair again.



Factory Reset

Deleting the device on the eWeLink app indicates you restore it to the factory setting.

Common Problems

Q: Why does my device stay “Offline”?

A: The newly added device needs 1 – 2mins to connect to Wi-Fi and network. If it stays offline for a long time, please judge these problems by the blue Wi-Fi indicator status:

1. The blue Wi-Fi indicator quickly flashes once per second, which means that the switch failed to connect your Wi-Fi:
 - ① Maybe you have entered the wrong Wi-Fi password.
 - ② Maybe there's too much distance between the switch your router or the environment causes interference, consider getting close to the router. If failed, please add it again.
 - ③ The 5G Wi-Fi network is not supported and only supports the 2.4GHz wireless network.
 - ④ Maybe the MAC address filtering is open. Please turn it off.

If none of the above methods solved the problem, you can open the mobile data network on your phone to create a Wi-Fi hotspot, then add the device again.

2. Blue indicator quickly flashes twice per second, which means your device has connected to Wi-Fi but failed to connect to the server.

Ensure a steady enough network. If double flash occurs frequently, which means you access an unsteady network, not a product problem. If the network is normal, try to turn off the power to restart the switch.

FCC Warning

Changes or modifications not expressly approved by the party responsible for compliance could avoid the user's authority to operate the equipment.

This device complies with part 15 of the FCC Rules. Operation is subject to the following two conditions: (1) This device may not cause harmful interference, and (2) this device must accept any interference received, including interference that may cause undesired operation.

FCC Radiation Exposure Statement:

This equipment complies with FCC radiation exposure limits set forth for an uncontrolled environment. This equipment should be installed and operated with a minimum distance 20cm between the radiator & your body. This transmitter must not be co-located or operating in conjunction with any other antenna or transmitter.

Note:

This equipment has been tested and found to comply with the limits for a Class B digital device, pursuant to part 15 of the FCC Rules. These limits are designed to provide reasonable protection against harmful interference in a residential installation. This equipment generates, uses, and can radiate radio frequency energy and, if not installed and used in accordance with the instructions, may cause harmful interference to radio communications. However, there is no guarantee that interference will not occur in a particular installation. If this equipment does cause harmful interference to radio or television reception, which can be determined by turning the equipment off and on, the user is encouraged to try to correct the interference by one or more of the following measures:

- Reorient or relocate the receiving antenna.
- Increase the separation between the equipment and receiver.
- Connect the equipment into an outlet on a circuit different from that to which the receiver is connected.
- Consult the dealer or an experienced radio/TV technician for help.

Hereby, Shenzhen Sonoff Technologies Co., Ltd. declares that the radio equipment type T0US1C/T0US2C/T0US3C/T2US1C/T2US2C/T2US3C/T3US1C/T3US2C/T3US3C is in compliance with Directive 2014/53/EU. The full text of the EU declaration of conformity is available at the following internet address: <https://sonoff.tech/usermanuals>

TX Frequency:

WiFi: 2412-2472MHz

RX Frequency:

WiFi: 2412-2472MHz

Output Power:

9.86dBm(802.11b), 9.93dBm(802.11g), 9.92dBm(802.11n20)



Shenzhen Sonoff Technologies Co., Ltd.

1001, BLDG8, Lianhua Industrial Park, Shenzhen, GD, China

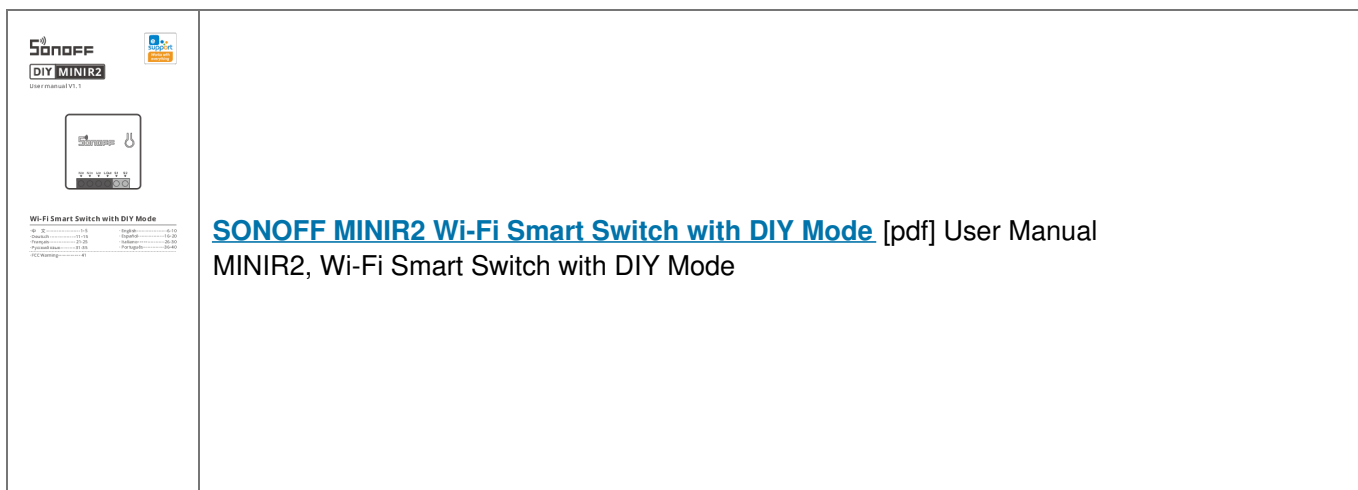
ZIP code: 518000 Website: sonoff.tech



MADE IN CHINA

SONOFF TECHNOLOGIES CO., LTD.

Documents / Resources



Wi-Fi Smart Switch with DIY Mode

Chinese	1-5	English	6-10
German	11-14	Spanish	16-20
French	21-25	Italian	26-30
Japanese	31-35	Portuguese	36-40
Other languages	41		

[SONOFF MINIR2 Wi-Fi Smart Switch with DIY Mode](#) [pdf] User Manual
MINIR2, Wi-Fi Smart Switch with DIY Mode

MINIR2, Wi-Fi Smart Switch with DIY Mode