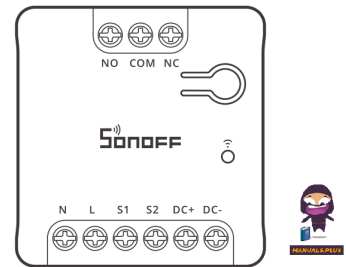


SONOFF
MINI Dry Wi-Fi Smart
Switch



SONOFF MINI Dry Wi-Fi Smart Switch User Guide

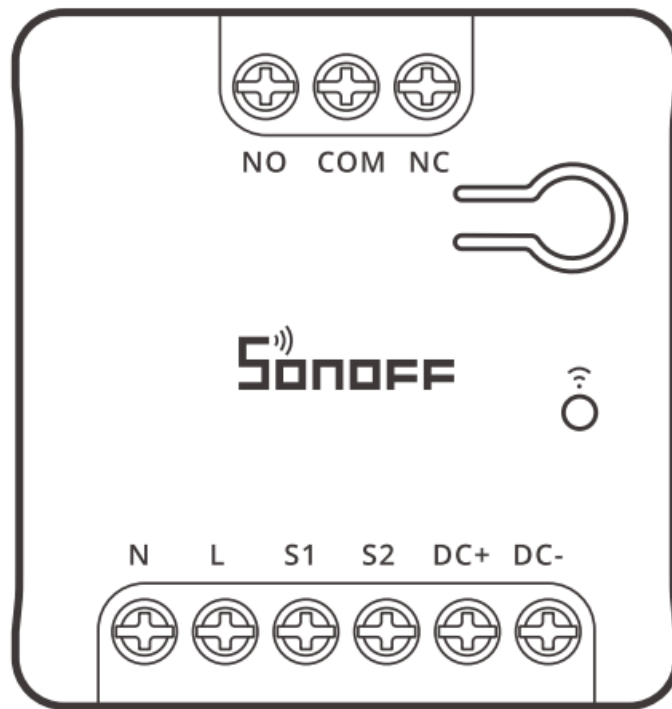
[Home](#) » [SonOFF](#) » SONOFF MINI Dry Wi-Fi Smart Switch User Guide 

Contents

- 1 SONOFF MINI Dry Wi-Fi Smart Switch
- 2 Specifications
- 3 FAQ
- 4 Power off
- 5 Wiring instruction
- 6 Download the eWeLink App
- 7 Power on
- 8 Check the Device Status
- 9 Add Device
- 10 Install the device in the mounting box
- 11 User Manual
- 12 WEEE Disposal and Recycling Information
- 13 FCC compliance statement
- 14 Documents / Resources
 - 14.1 References
- 15 Related Posts

SONOFF

SONOFF MINI Dry Wi-Fi Smart Switch



Specifications

- Product Name: MINI Dry Quick Guide V1.0
- Model: Wi-Fi Smart Switch ZH JA
- AC Input: 100-240V~ Max 8W
- DC Input: 12-48V Max 8W

FAQ

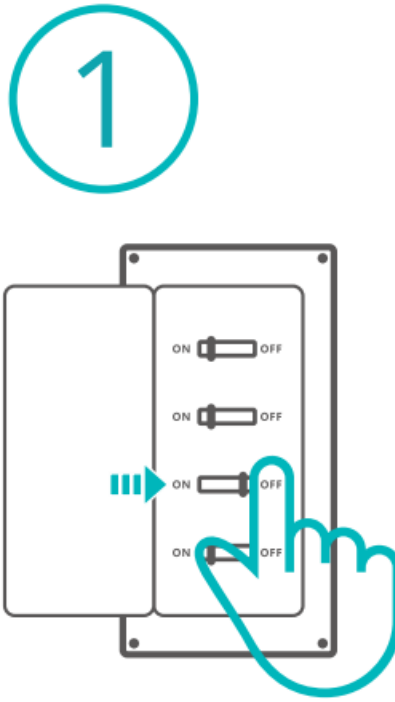
Q: Can AC and DC inputs be used simultaneously?

A: No, AC and DC inputs are not supported to be used at the same time.

Q: How to check compatibility with a garage door motor?

A: Short-circuit the terminals of the motor originally used for wall switch connection. If the motor operates after short-circuiting, it is compatible.

Power off



WARNING

Please install and maintain the device by a professional electrician. To avoid electric shock hazard, do not operate any connection or contact the terminal connector while the device is powered on!

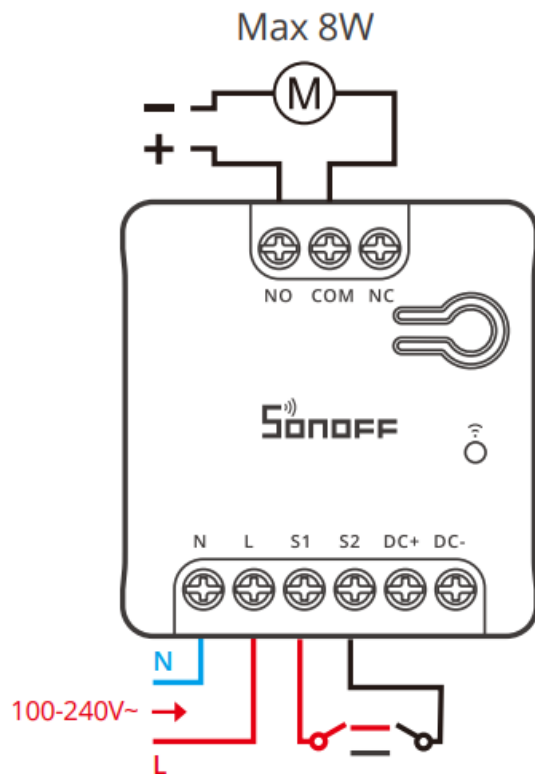
Wiring instruction

WARNING

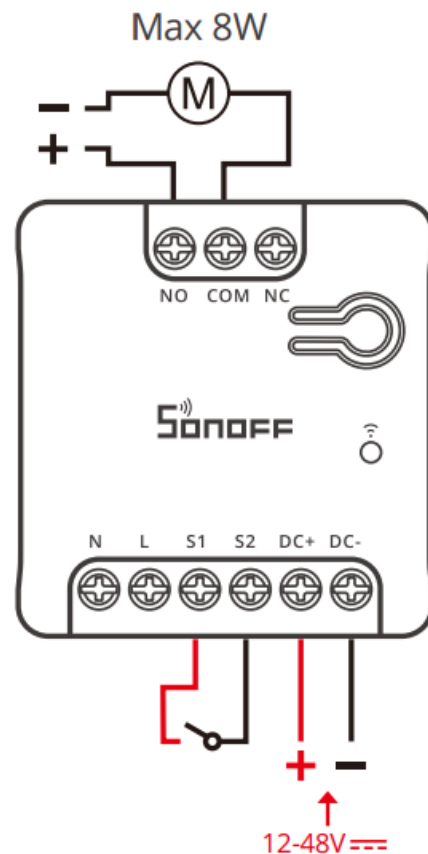
AC and DC are not supported as power input at the same time!

DC low power load wiring

AC Input:



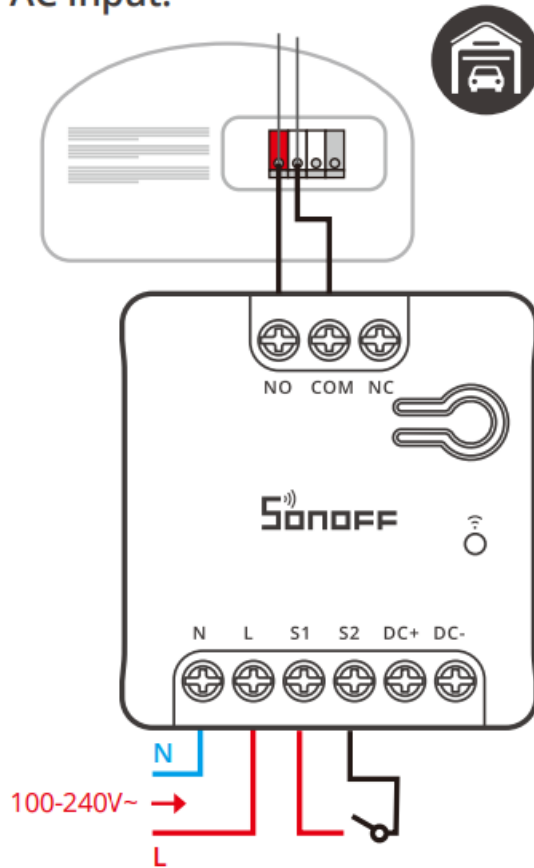
DC Input:



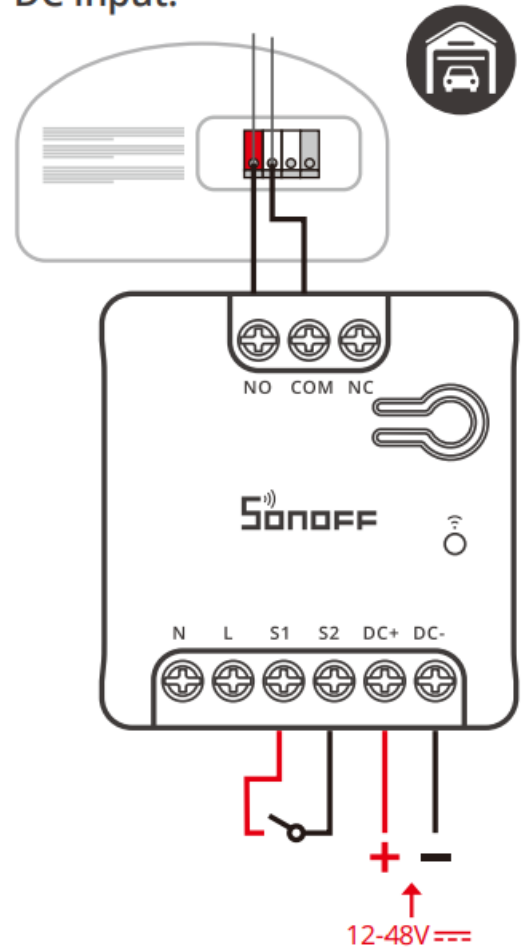
Dry contact wiring

1. Applicable to devices that can be controlled via dry contact.
2. To ensure compatibility with the garage door motor, please short-circuit the terminals of the motor that were originally used to connect to the wall switch (the short-circuiting process is safe, so don't worry). If the garage door motor operates after short-circuiting, it is compatible; if the motor does not operate, it is not compatible.
 1. Applicable to devices that can be controlled via dry contact.
 2. To ensure compatibility with the garage door motor, please short-circuit the terminals of the motor that were originally used to connect to the wall switch (the short-circuiting process is safe, so don't worry). If the garage door motor operates after short-circuiting, it is compatible; if the motor does not operate, it is not compatible.

AC Input:



DC Input:

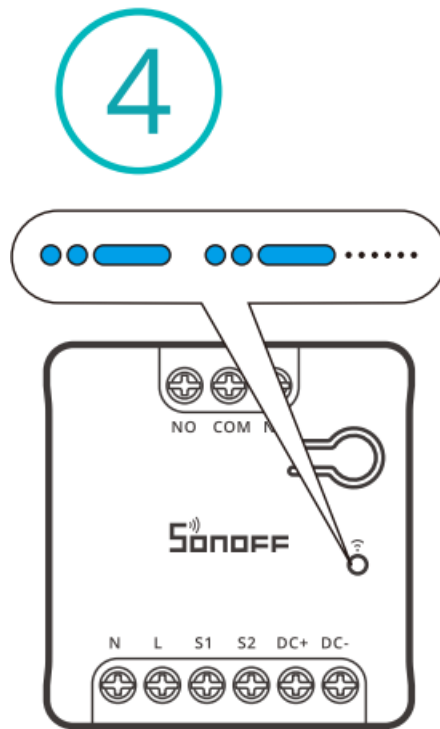


Make sure all wires are connected correctly

Download the eWeLink App



Power on



After powering on, the device will enter the Pairing Mode during the first use. The LED indicator changes in a cycle of two short and one long flash and release

Check the Device Status

External Switch Type: The device's factory default is the rocker switch. To switch to the momentary switch, you need to short-press the device button three times. If the blue light flashes three times, it means the switch is successful.

Add Device

Method 1: Matter Pairing



Add to Apple
via Matter



Add to Google
via Matter



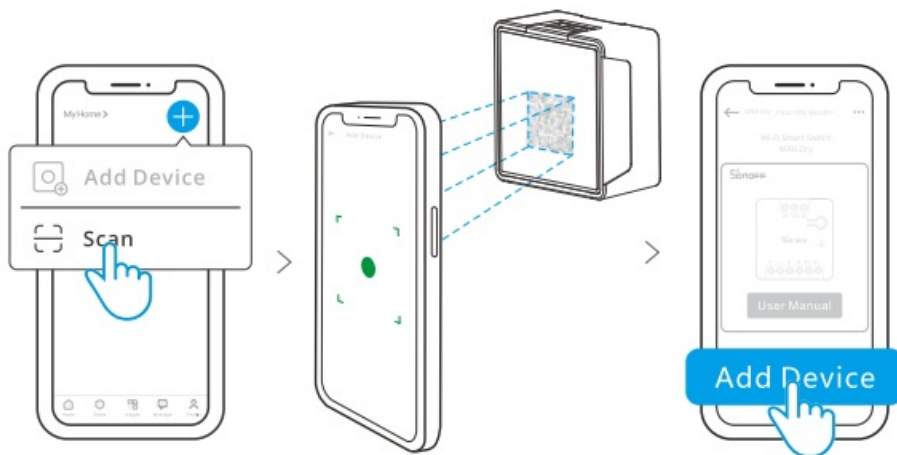
Add to Alexa
via Matter



Add to SmartThings
via Matter

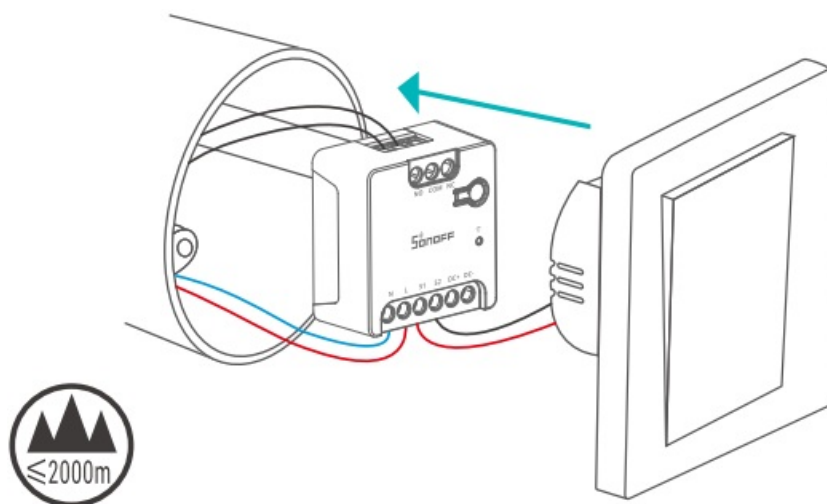
Open a Matter-compatible App to scan the Matter QR code on the Quick Guide or the device itself to add the device.

Method 2: eWeLink App Pairing



Open the eWeLink App and scan the QR code on the device, then follow the instructions given by the app to proceed.

Install the device in the mounting box



This product is only suitable for safe use at altitudes below 2000m

User Manual

<https://sonoff.tech/usermanuals>

Enter the website provided above to view the User Manual for the device

To ensure the safety of your electrical installation, it's essential either a Miniature Circuit Breaker (MCB) or a Residual Current operated Circuit-breaker with Integral Overcurrent protection(RCBO) with an electrical rating of 2A has been installed before the MINI-D,MINI-D-MS

WEEE Disposal and Recycling Information

All products bearing this symbol are waste electrical and electronic equipment (WEEE as in directive 2012/19/EU) which should not be mixed with unsorted household waste. Instead, you should protect human health and the environment by handing over your waste equipment to a designated collection point for the recycling of waste electrical and electronic equipment, appointed by the government or local authorities. Correct disposal and recycling will help prevent potential negative consequences to the environment and human health. Please contact

the installer or local authorities for more information about the location as well as terms and conditions of such collection points.

FCC compliance statement

1. This device complies with part 15 of the FCC Rules. Operation is subject to the following two conditions:
 1. This device may not cause harmful interference, and
 2. This device must accept any interference received, including interference that may cause undesired operation.
2. Changes or modifications not expressly approved by the party responsible for compliance could void the user's authority to operate the equipment.

Note: This equipment has been tested and found to comply with the limits for a Class B digital device, pursuant to part 15 of the FCC Rules. These limits are designed to provide reasonable protection against harmful interference in a residential installation. This equipment generates, uses and can radiate radio frequency energy and, if not installed and used in accordance with the instructions, may cause harmful interference to radio communications. However, there is no guarantee that interference will not occur in a particular installation. If this equipment does cause harmful interference to radio or television reception, which can be determined by turning the equipment off and on, the user is encouraged to try to correct the interference by one or more of the following measures:

- Reorient or relocate the receiving antenna.
- Increase the separation between the equipment and receiver.
- Connect the equipment into an outlet on a circuit different from that to which the receiver is connected.
- Consult the dealer or an experienced radio/TV technician for help.

FCC Radiation Exposure statement:

This equipment complies with FCC radiation exposure limits set forth for an uncontrolled environment.

This equipment should be installed and operated with minimum distance of 20 cm between the radiator and your body.

This transmitter must not be co-located or operating in conjunction with any other antenna or transmitter.

FCC ID: 2APN5MINI-D

Warning

Under normal use of condition, this equipment should be kept a separation distance of at least 20 cm between the antenna and the body of the user.

- Pollution degree: II
- Rated impulse voltage: 4KV
- Automatic action: 20000 Cycles
- Diameter of wiring(recommend): 18AWG to 14AWG 0.75mm² to 1.5 mm²
- Casing material: PC
- Control Type: 1.B
- Operating temperature: 10T40
- Operating altitude: 2000M

EU Declaration of Conformity

Hereby, Shenzhen Sonoff Technologies Co., Ltd. declares that the radio equipment type MINI-D, MINI-D-MS is in compliance with Directive 2014/53/EU. The full text of the EU declaration of conformity is available at the following internet address: <https://sonoff.tech/compliance/>

For CE frequency

EU Operating Frequency Range

Wi-Fi

802.11 b/g/n20 2412–2472 MHz

802.11 n40: 2422-2462 MHz

BLE: 2402–2480 MHz

EU Output Power

Wi-Fi 2.4G≤20dBm

BLE≤10dBm

Shenzhen Sonoff Technologies Co., Ltd.

3F & 6F, Bldg A, No. 663, Bulong Rd, Shenzhen, Guangdong, China

ZIP code: 518000 Website: sonoff.tech Service email: support@itead.cc

MADE IN CHINA

Documents / Resources



[SONOFF MINI Dry Wi-Fi Smart Switch](#) [pdf] User Guide

MINI Dry Wi-Fi Smart Switch, MINI Dry, Wi-Fi Smart Switch, Smart Switch, Switch

References

- [User Manual](#)

[Manuals+](#), [Privacy Policy](#)

This website is an independent publication and is neither affiliated with nor endorsed by any of the trademark owners. The "Bluetooth®" word mark and logos are registered trademarks owned by Bluetooth SIG, Inc. The "Wi-Fi®" word mark and logos are registered trademarks owned by the Wi-Fi Alliance. Any use of these marks on this website does not imply any affiliation with or endorsement.