



**Contents** [ [hide](#) ]

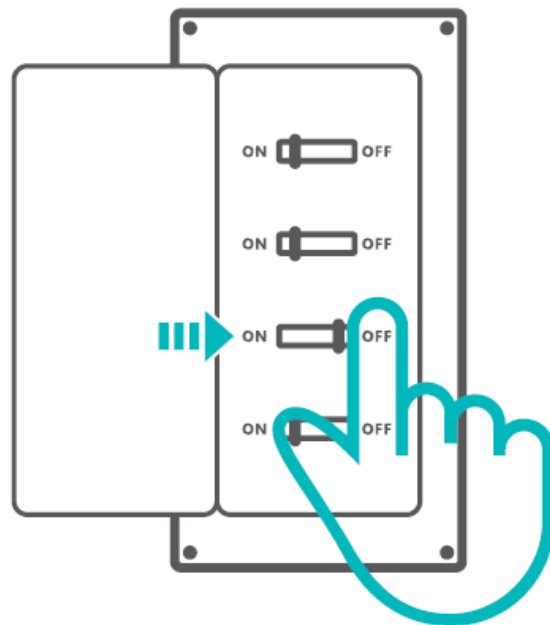
- [1 SONOFF MINI-D Smart Wi-Fi Switch](#)
- [2 Power off](#)
- [3 Wiring instruction](#)
- [4 DC low-power load wiring](#)
- [5 Power on](#)
- [6 FCC compliance statement](#)
- [7 Documents / Resources](#)
  - [7.1 References](#)



## SONOFF MINI-D Smart Wi-Fi Switch



## Power off



## WARNING

- Please install and maintain the device by a professional electrician.
- To avoid an electric shock hazard, do not operate any connection or contact the terminal connector while the device is powered on!

## Wiring instruction

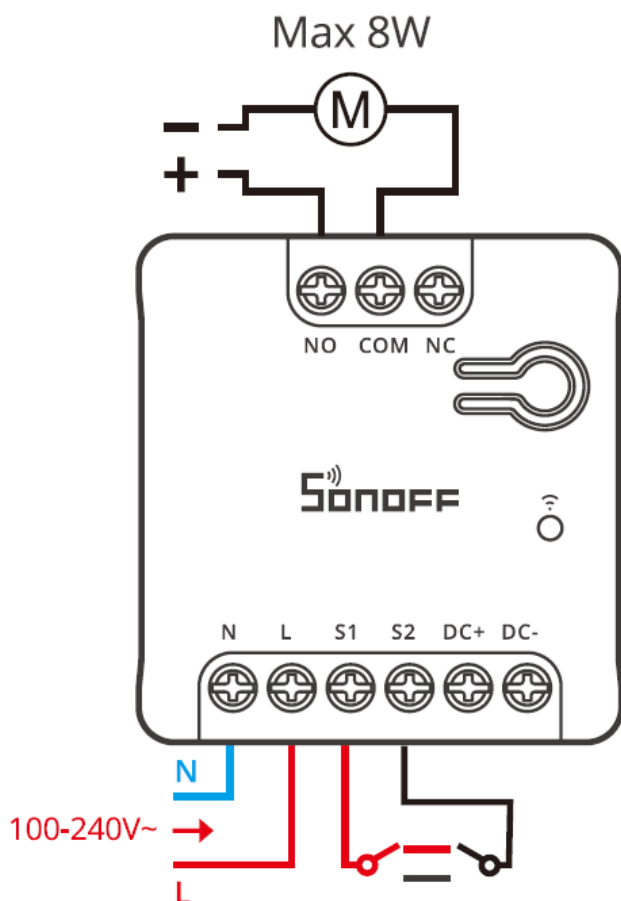


### WARNING

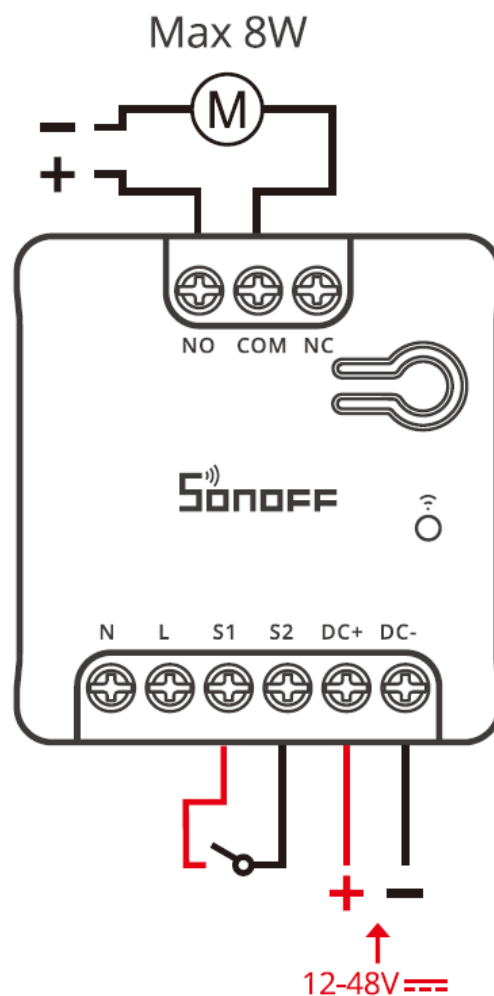
AC and DC are not supported as power input at the same time!

## DC low-power load wiring

### AC Input:



### DC Input:

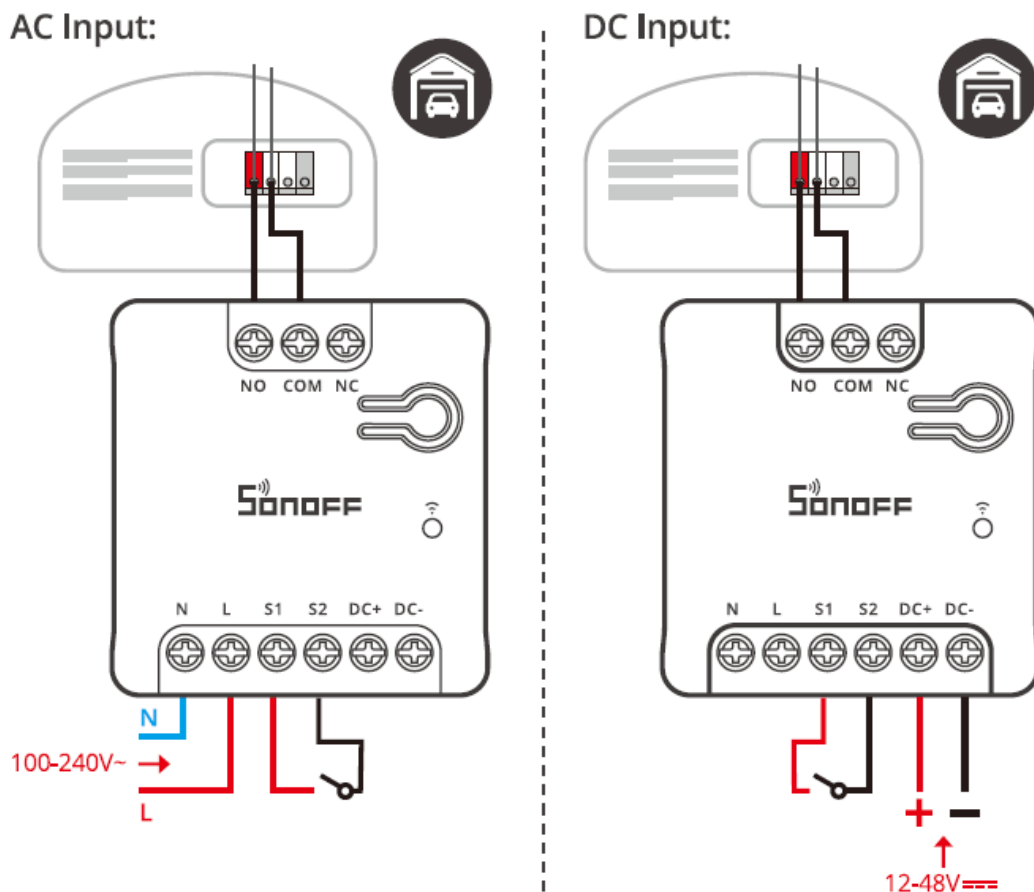


## Dry contact wiring

1. Applicable to devices that can be controlled via dry contact.
2. To ensure compatibility with the garage door motor, please short-circuit the terminals of the motor that were originally used to connect to the wall switch ( the short-circuiting process is safe, so don't worry.

If the garage door motor operates after short-circuiting, it is compatible; if the motor does not operate, it is not compatible.

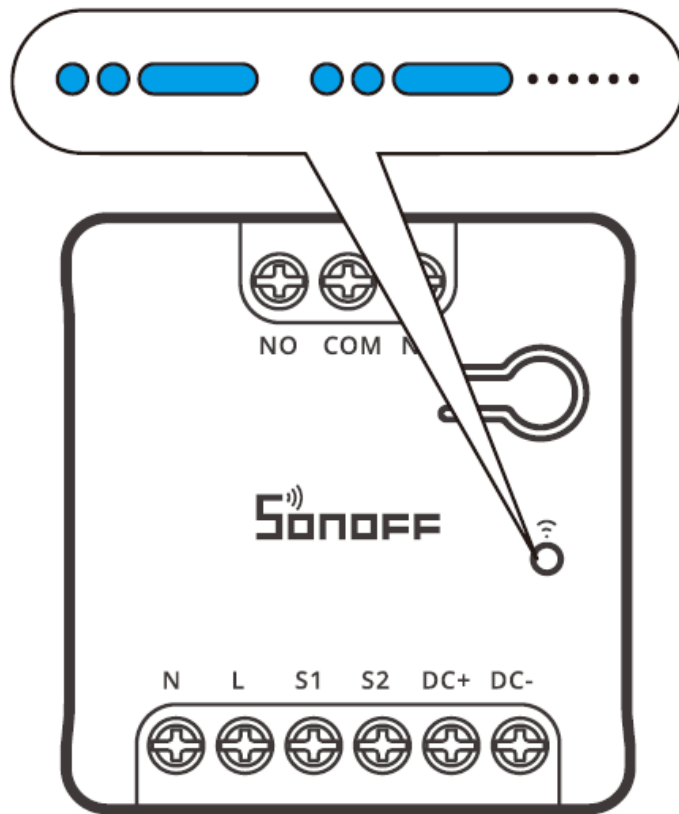
1. Applicable to devices that can be controlled via dry contact.
2. To ensure compatibility with the garage door motor, please short-circuit the terminals of the motor that were originally used to connect to the wall switch ( the short-circuiting process is safe, so don't worry.
3. If the garage door motor operates after short-circuiting, it is compatible; if the motor does not operate, it is not compatible.



**Download the eWeLink App**



**Power on**



After powering on, the device will enter Training Mode during The first use. The LED indicator changes in a cycle of two short and One long flash and release.

### Check the Device Status

- External Switch Type: The device's factory default is the rocker switch.
- To switch to the momentary switch, you need to short-press the device button three times.
- If the blue light flashes three times, it means the switch is successful.

### Method 1: Matter Pairing



Add to Apple  
via Matter



Add to Google  
via Matter



Add to Alexa  
via Matter



Add to SmartThings  
via Matter

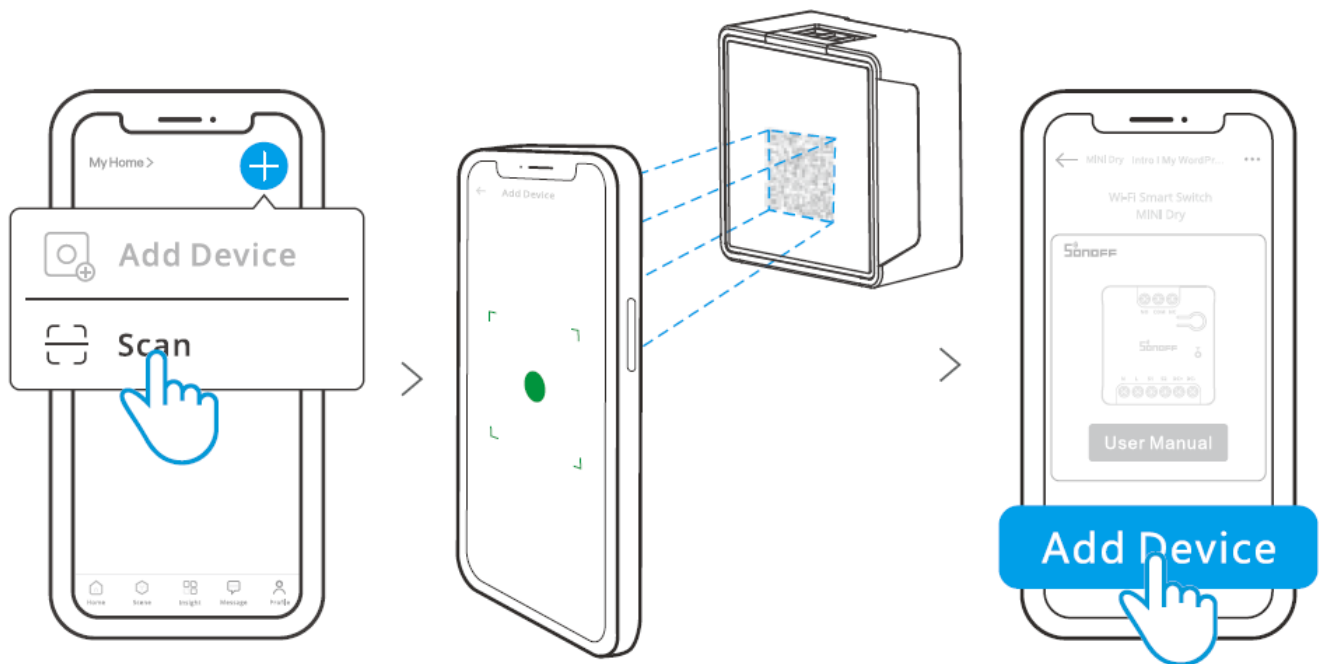
### Matter-compatible

Open a Matter-compatible App to scan the Matter QR code on the Quick Guide or the

device itself to add the device.

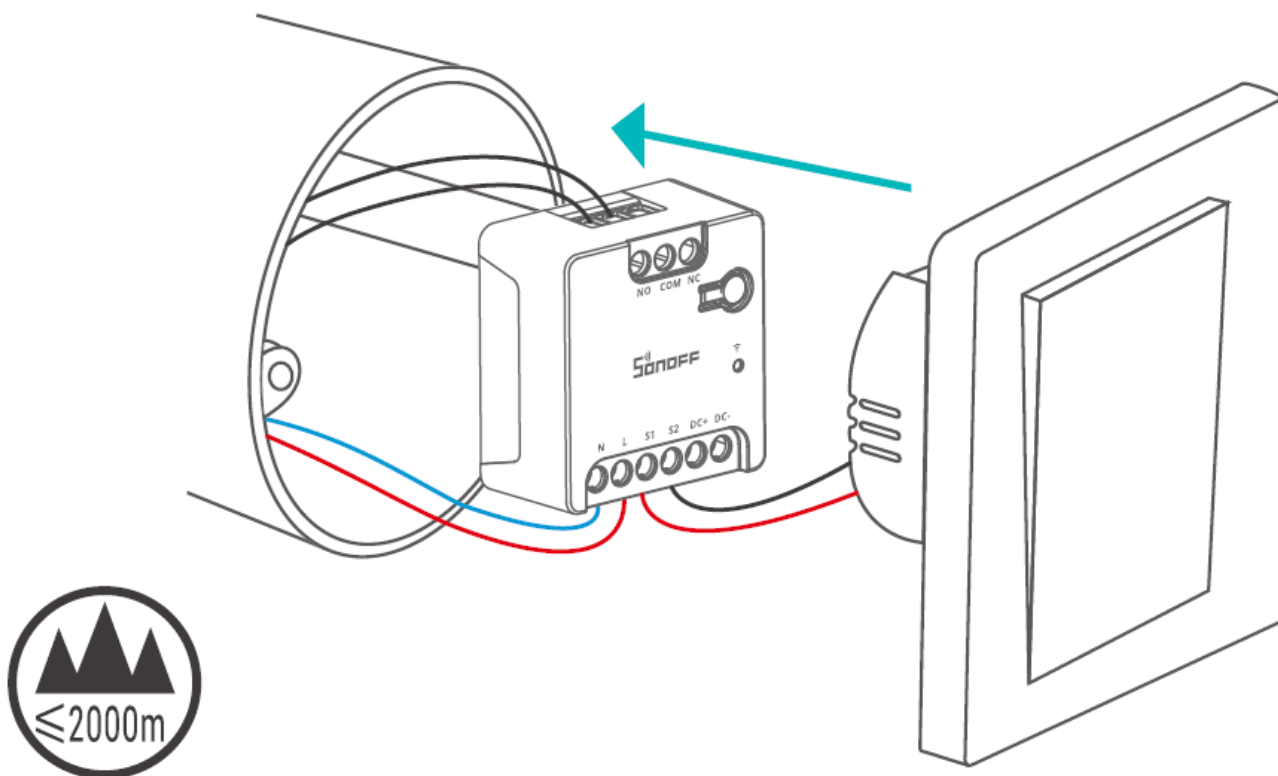
## Method 2: eWeLink App Pairing

Open the eWeLink App and scan the QR code on the device, then follow the instructions given by the app to proceed. If the page doesn't display after scanning the code, please click the '+' button in the top right corner of the eWeLink App homepage, select 'Add Device' to proceed.



## Install the device in the mounting box

This product is only suitable for safe use at altitudes below 2000m.



## User Manual

<https://sonoff.tech/usermanuals>

Enter the website provided above to view the User Manual for the device.

## For CE frequency

EU Operating Frequency Range

Wi-Fi: 802.11 b/g/n20 2412-2472 MHz, 802.11 n40: 2422-2462 MHz

BLE: 2402-2480 MHz

EU Output Power Wi-Fi 2.4GQOdBm, BLESIOdBm

## EU Declaration of Conformity

Hereby, Shenzhen Sonoff Technologies Co., Ltd. declares that the radio equipment type MINI-D complies with Directive 2014/53/EU. The full text of the EU declaration of conformity is available at the following internet address: <https://sonoff.tech/compliance/>



## WEEE Disposal and Recycling Information

All products bearing this symbol are waste electrical and electronic equipment (WEEE as in directive 2012/19/EU), which should not be mixed with unsorted household waste. Instead, you should protect human health and the environment by handing over your

waste equipment at a designated collection point for the recycling of waste electrical and electronic equipment, appointed by the government or local authorities. Correct Disposal and recycling will help prevent potential negative consequences to the environment and human health. Please contact the installer or local authorities for more information about the location, as well as the terms and conditions of such collection points.

## **FCC compliance statement**

This device complies with Part 15 of the FCC Rules. Operation is subject to the following two conditions:

1. This device may not cause harmful interference, and
2. This device must accept any interference received, including interference that may cause an undesired operation.

Changes or modifications not expressly approved by the party responsible for compliance could void the user's authority to operate the equipment.

**Note:** This equipment has been tested and found to comply with the limits for a Class B digital device, under part 15 of the FCC Rules. These limits are designed to provide reasonable protection against harmful interference in a residential installation. This equipment generates, uses, and can radiate radio frequency energy and, if not installed and used according to the instructions, may cause harmful interference to radio communications.

However, there is no guarantee that interference will not occur in a particular installation. If this equipment does cause harmful interference to radio or television reception, which can be determined by turning the equipment off and on, the user is encouraged to try to correct the interference by one or more of the following measures:

- Reorient or relocate the receiving antenna.
- Increase the separation between the equipment and receiver.
- Connect the equipment to an outlet on a circuit different from that to which the receiver is connected.
- Consult the dealer or an experienced radio/TV technician for help.



## FCC Radiation Exposure Statement

This equipment complies with the FCC radiation exposure limits set forth for an uncontrolled environment. This equipment should be installed and operated at a minimum distance of 20 cm between the radiator and your body. This transmitter must not be co-located or operating in conjunction with any other antenna or transmitter.

**FCC ID:** 2APN5MINI-D

## Warning

Under normal use conditions, this equipment should be kept separate a distance of at least 20 cm between the antenna and the body of the user.

## Pollution degree

- Control Type: 1 .B
- Rated impulse voltage: 4KV
- Operating temperature: IOT40
- Automatic action: 20000 Cycles
- Operating altitude: 2000m
- Diameter of wiring(recommend): 18AWG to 14AWG (0.75mm<sup>2</sup> to 1.5 mm<sup>2</sup> )
- Casing material: PC

To ensure the safety of your electrical installation, it's essential that either a Miniature Circuit Breaker (MCB) or a Residual Current operated Circuit-breaker with Integral Overcurrent protection(RCBO) with an electrical rating of 1 OA has been installed before the MINI-D. To ensure the safety of the electrical installation, an overcurrent protection device with a rated current of 3A must be used in the control circuit of the MINI-D.

Shenzhen Sonoff Technologies Co., Ltd.

3F & 6F, Bldg A, No. 663, Bulong Rd, Shenzhen, Guangdong, China


ZIP code: 518000

Website: [sonoff.tech](http://sonoff.tech)

Service email: [support@itead.cc](mailto:support@itead.cc)


MADE IN CHINA

## Documents / Resources

	<a href="#">SONOFF MINI-D Smart Wi-Fi Switch [pdf]</a> User Guide MINI-D, MINI-D Smart Wi-Fi Switch, MINI-D, Smart Wi-Fi Switch, Wi-Fi Switch, Switch
---	--

## References

- [User Manual](#)

 Mini D, MINI-D Smart Wi-Fi Switch, Smart Wi-Fi Switch, SonOFF, switch, Wi-Fi

 SonOFF   Switch

---

## Leave a comment

Your email address will not be published. Required fields are marked \*

Comment \*

Name

Email

Website

☐ Save my name, email, and website in this browser for the next time I comment.

Post Comment

## Search:

e.g. whirlpool wrf535swhz

Search

[Manuals+](#) | [Upload](#) | [Deep Search](#) | [Privacy Policy](#) | [@manuals.plus](#) | [YouTube](#)

This website is an independent publication and is neither affiliated with nor endorsed by any of the trademark owners. The "Bluetooth®" word mark and logos are registered trademarks owned by Bluetooth SIG, Inc. The "Wi-Fi®" word mark and logos are registered trademarks owned by the Wi-Fi Alliance. Any use of these marks on this website does not imply any affiliation with or endorsement.