

SONOFF
Micro
USB
Smart
Adapter



SONOFF Micro USB Smart Adapter User Guide

[Home](#) » [SonOFF](#) » SONOFF Micro USB Smart Adapter User Guide 

Contents

- [1 SONOFF Micro USB Smart Adapter](#)
- [2 Add device](#)
- [3 FCC compliance statement](#)
- [4 Documents / Resources](#)
 - [4.1 References](#)



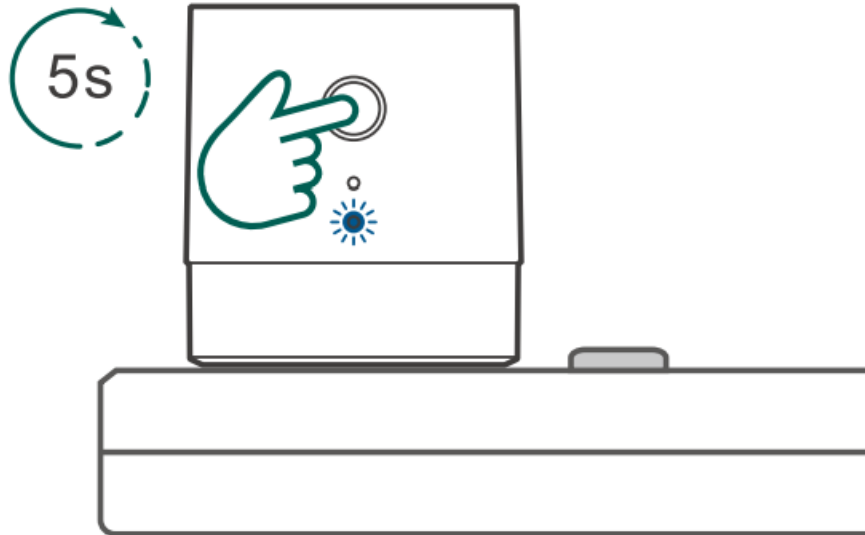
SONOFF Micro USB Smart Adapter



Download the eWeLink App



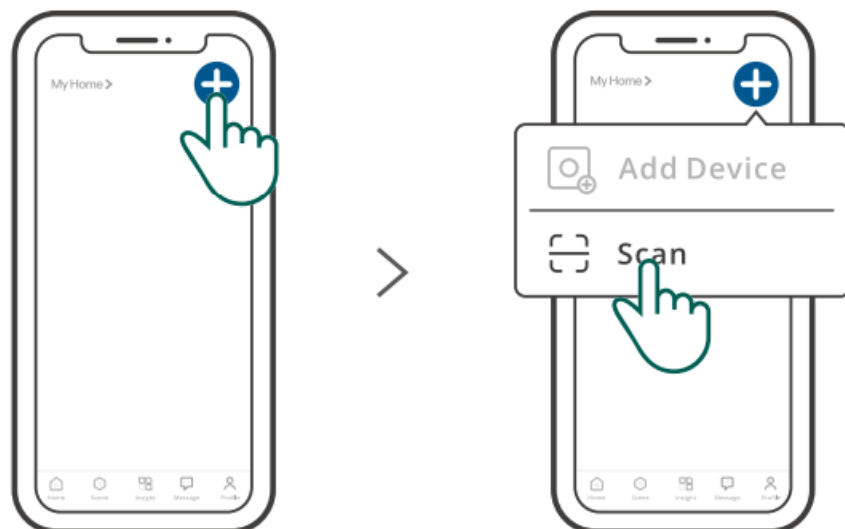
Power On



Long press the button for 5s on the device until the Wi-Fi LED indicator quickly flashes and release, then the device enters the pairing mode.

- The device will exit the pairing mode if do not operate within 3mins. If you want to enter the pairing mode again, Long press the device button for 5s and release. Long press the device button for 5s again until the WiFi LED indicator is “flash quickly”.

Add device



Tap “+” and select “Scan” to add the device by scanning the QR code on the device.



<https://sonoff.tech/usermanuals>

Scan the QR code or visit the website to learn about the detailed user manual and help.

FCC compliance statement

Changes or modifications not expressly approved by the party responsible for compliance could avoid the user's authority to operate the equipment. This device complies with part 15 of the FCC Rules.

Operation is subject to the following two conditions:

1. This device may not cause harmful interference, and
2. this device must accept any interference received, including interference that may cause undesired operation.

FCC Radiation Exposure Statement:

This equipment complies with FCC radiation exposure limits set forth for an uncontrolled environment. This equipment should be installed and operated with minimum distance 20cm between the radiator & your body. This transmitter must not be co-located or operating in conjunction with any other antenna or transmitter.

Note:

This equipment has been tested and found to comply with the limits for a Class B digital device, pursuant to part 15 of the FCC Rules. These limits are designed to provide reasonable protection against harmful interference in a residential installation. This equipment generates, uses and can radiate radio frequency energy and, if not installed and used in accordance with the instructions, may cause harmful interference to radio communications. However, there is no guarantee that interference will not occur in a particular installation. If this equipment does cause harmful interference to radio or television reception, which can be determined by turning the equipment off and on, the user is encouraged to try to correct the interference by one or more of the following measures:

- Reorient or relocate the receiving antenna.
- Increase the separation between the equipment and receiver.
- Connect the equipment into an outlet on a circuit different from that to which the receiver is connected.
- Consult the dealer or an experienced radio/ TV technician for help.

For CE Frequency

- EU Operating Frequency Range
- Wi-Fi: 802.11 b/g/n20 2412-2472 MHz
- 802.11 n40: 2422-2462 MHz
- EU Output Power
- Wi-Fi: 2.4Gs20dBm

EU Declaration of Conformity

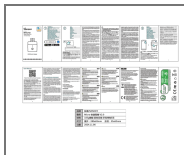
Hereby, Shenzhen Sonoff Technologies Co., Ltd. declares that the radio equipment type Micro is in compliance with Directive 2014/53/EU. The full text of the EU declaration of conformity is available at the following internet address: <https://sonoff.tech/compliance/>

- Shenzhen Sonoff Technologies Co., Ltd. 1 001 BLDG8, Lianhua Industrial Park, shenzhen, GD, China
- **ZIP code:** 518000
- **Website:** sonoff.tech
- **Service email:** support@itead.cc
- MADE IN CHINA

WARNING

1. This product is not a toy and not intended for use by children. For adult use only.
2. The appliance is suitable for moderate climates only.
3. The ventilation must not be impaired by covering the appliance with items such as newspapers, table cloths, curtains, etc.
4. Naked flame sources, such as candles, must not be placed on the appliance.

Documents / Resources



[SONOFF Micro USB Smart Adapter](#) [pdf] User Guide
Micro USB Smart Adapter, Micro, USB Smart Adapter, Smart Adapter

References

- [User Manual](#)

[Manuals+](#), [Privacy Policy](#)

This website is an independent publication and is neither affiliated with nor endorsed by any of the trademark owners. The "Bluetooth®" word mark and logos are registered trademarks owned by Bluetooth SIG, Inc. The "Wi-Fi®" word mark and logos are registered trademarks owned by the Wi-Fi Alliance. Any use of these marks on this website does not imply any affiliation with or endorsement.