



SONOFF M5 SwitchMan Zigbee Smart Wall Switch Owner's Manual

[Home](#) » [SonOFF](#) » SONOFF M5 SwitchMan Zigbee Smart Wall Switch Owner's Manual 

Contents

- [1 SONOFF M5 SwitchMan Zigbee Smart Wall Switch](#)
- [2 Product Usage Instructions](#)
- [3 FAQ](#)
- [4 Product Model Introduction](#)
- [5 Notes before Using](#)
- [6 Available Platforms](#)
- [7 Introduction](#)
- [8 Installation](#)
- [9 Documents / Resources](#)
 - [9.1 References](#)



SONOFF M5 SwitchMan Zigbee Smart Wall Switch



Specifications:

- Zigbee wall switch with support for both No Neutral and Neutral wire
- Available in white with a standard 120-type design
- Offers one, two, or three channels for selection
- Minimum Load Requirement: 3W
- Does not support smart lights like dimmable, color-changing, gradient, or controller-equipped lights and LED strips

Product Usage Instructions

Power Off:

Before installation or maintenance, ensure the power is switched off at the circuit breaker.

Wiring Instruction:

Follow the wiring diagram provided in the manual based on your home setup (No neutral required mode or Neutral required mode).

Power On:

After wiring, turn on the power at the circuit breaker to supply power to the switch.

Downloading eWeLink App & Adding SONOFF Zigbee Gateway:

1. Download the eWeLink App from Google Play Store or Apple App Store.
2. Add SONOFF Zigbee gateway to your network.

Adding the Device:

1. Scan the QR code provided in the manual to add the device to the app.

Factory Reset:

If needed, perform a factory reset by following the instructions in the manual.

Switching Wiring Modes:

To switch between wiring modes, follow the provided guidelines in the manual based on your requirements.

Ending:

Complete the setup as per the user manual instructions and enjoy using the product.

FAQ**Q: Can I use this switch with smart lights?**

A: The switch does not support smart lights like dimmable,color-changing, gradient, or controller-equipped lights and LED strips.

Q: What platforms are compatible with this switch?

A: The switch is compatible with eWeLink App, SONOFF Zigbee Gateway, and third-party platforms like Home Assistant using ZBDongle via ZHA or Zigbee2MQTT integration.

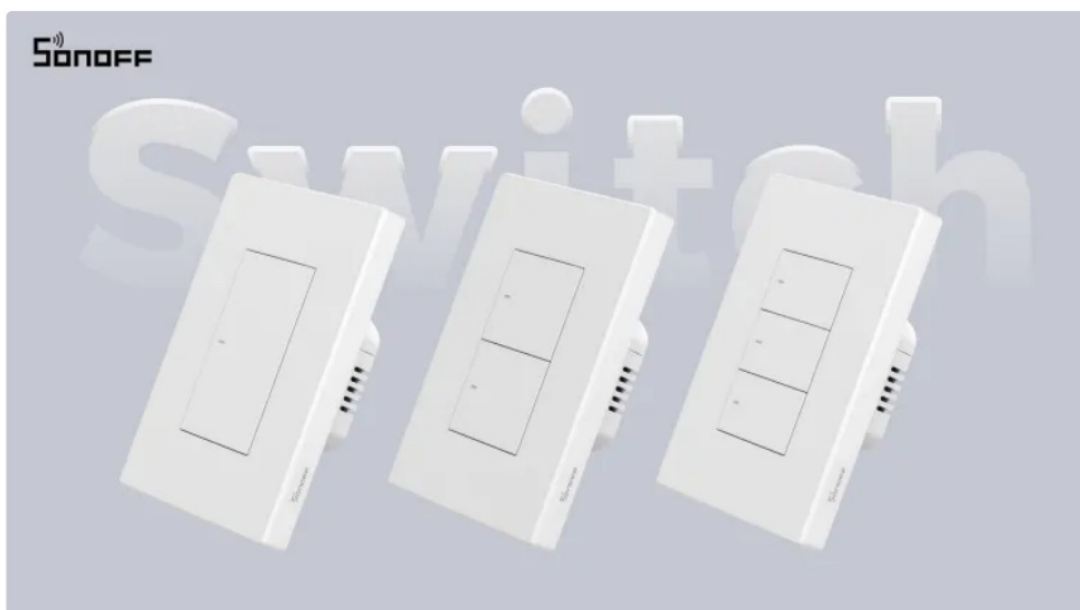
Product Preview Manual (VIP version)

Hi!
We are glad to have you participate in our new product review! Your unique perspective and professional feedback are invaluable to us. The following sections will provide detailed information on usage precautions, platform support, and the product manual. We hope this new product will excite both you and your audiences. Once again, thank you for your support and collaboration!

Product Model Introduction

This is a Zigbee wall switch support with both No Neutral and Neutral wire Currently available in white with a standard 120-type design, it offers one, two, or three channels for selection.

*The ZBM5 appearance is similar to the white version of the M5 Matter switch.

**Notes before Using**

ZBM5 can be configured based on your home wiring setup, supporting two modes:

- No neutral required mode
- Neutral required mode
- No neutral required mode

The device operates as a Zigbee end device.

Minimum Load Requirement: The external load must meet a minimum power requirement of 3W.

Limitations:

Does not support smart lights, including but not limited to dimmable, color-changing, gradient, or controller-equipped lights and LED strips.

Neutral required mode

The device operates as a Zigbee router, enhancing the robustness and coverage of your Zigbee network. Supports smart lights and can be used with the “Relay Separation” feature in the eWeLink app.

Available Platforms

eWeLink APP

eWeLink APP	Android	V5.11.0
	iOS	V5.11.0

SONOFF Zigbee Gateway

As a Zigbee device, this switch requires a Zigbee gateway. We recommend using it with the following gateways:

- ZBBridge-P (V2.2.0),

Please upgrade the gateway firmware to the latest version before adding a device.

Additionally, other gateways will support this device with their respective version updates in December:

- ZBBridge-U (V1.6.0),
- NSPanel Pro (V3.7.0),
- iHost (V2.5.0)

Other compatible SONOFF gateway models: ZBDongel-P, ZBDongel-E.

Third-Party Platforms

Voice Platform (Alexa & Google Home)

Amazon currently does not support Zigbee multi-channel switch devices directly. Therefore, we recommend syncing the device to Alexa or Google Home through the eWeLink app by linking account.

Voice control functionality is expected to be available by December.

Home Assistant

Compatible with Home Assistant using the ZBDongle via ZHA or Zigbee2MQTT integration.

Introduction



Remote Control



Single/Countdown
Timing



Share Control



Neutral Wire Optional



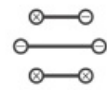
Smart Scene



Voice Control



Group Control



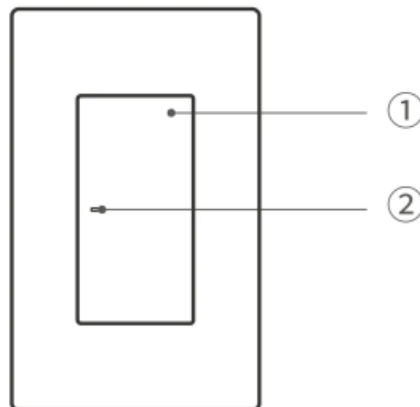
Power-on State

1. Button

- Single press: Turn on/off the smart device.
- Press and hold for 5 seconds: Device enters the pairing mode.
(Pairing time 180s)

2. LED indicator (Blue)




- Slow flash: Device is in pairing mode
- Fast flash Zigbee connection abnormality



Compatible Voice Assistants



SPECIFICATION

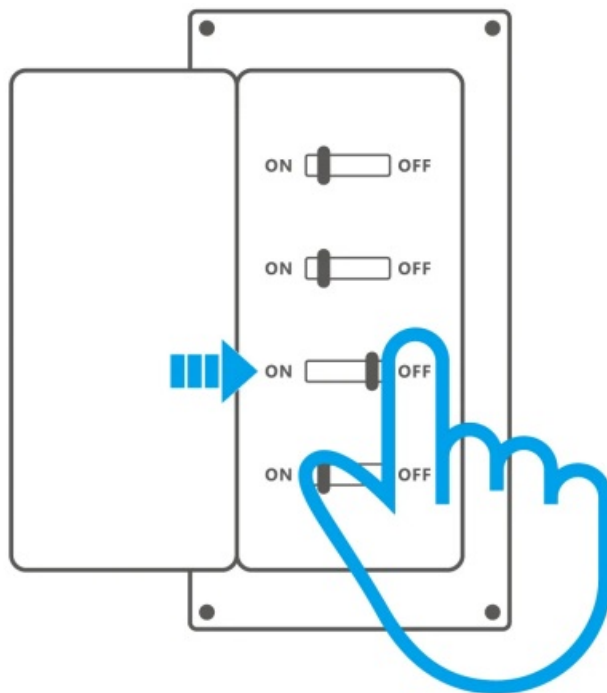
Model	ZBM5-1C-120W, M5-2C-120W, M5-3C-120W
MCU	EFR32MG22
Rating	1C: 100-240V~ 50/60Hz 10A Max Resistive load  μ 2C: 100-240V~ 50/60Hz 10A/gang, Total 10A Max Resistive load  μ 3C: 100- 240V~ 50/60Hz 10A/gang, Total 10A Max Resistive load  μ
LED load	1C: 400W@240V, 200W@100V 2C: 400W@240V/gang, 200W@100V/gang, Total 400W@240V, 200W@100V 3C: 400W@240V/gang, 200W@100V/gang, Total 400W@240V, 200W@100V
Minimum load	3W (No neutral required mode)
Wireless Connectivity	Zigbee 3.0
Net Weight	1C: 176g, 2C: 184g 3C:193g
Dimension	120x74x39.4mm

Color	White
Casing Material	PC+CRS
Applicable Place	Indoor
Working Temperature	10T40 (-10°C~40°C)
Working Humidity	5%~95% RH, non-condensing
Certification	CE/FCC/RoHS
Executive standard	EN IEC 60669-2-1

This product is only suitable for safe use at altitudes below 2000m.

Installation

Power off



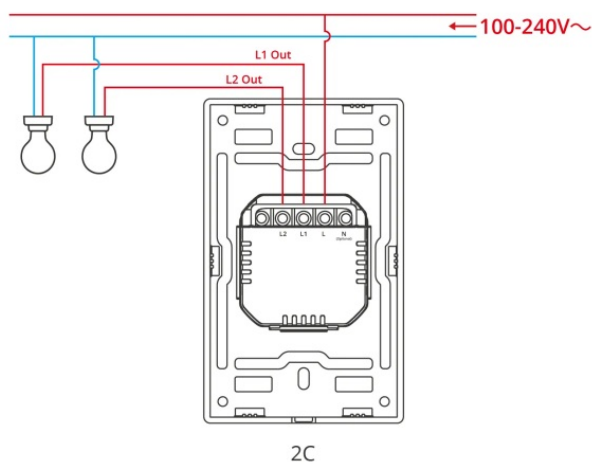
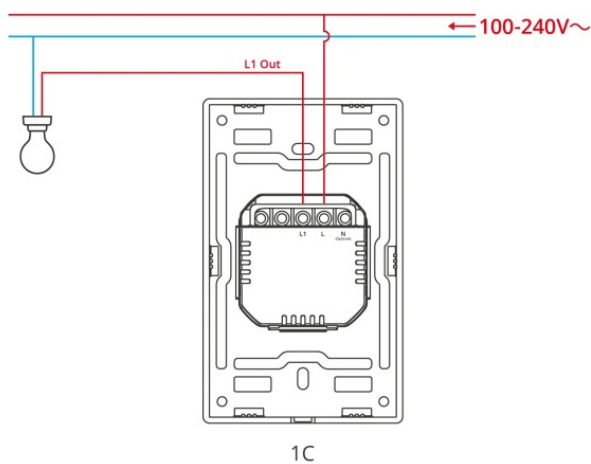
WARNING

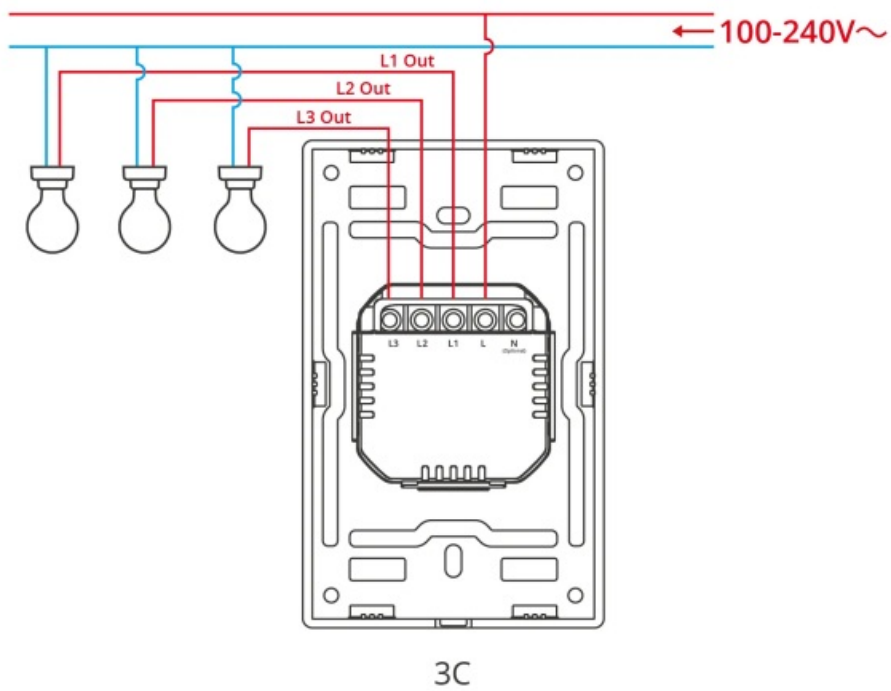
Please install and maintain the device by a professional electrician. To avoid electric shock hazard, do not operate any connection or contact the terminal connector while the device is powered on!

Wiring instruction

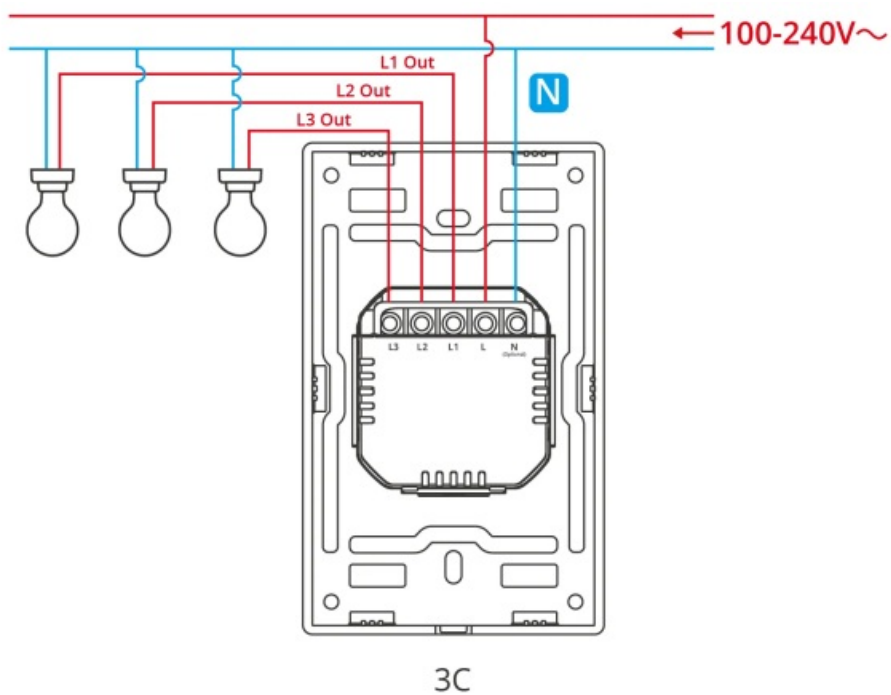
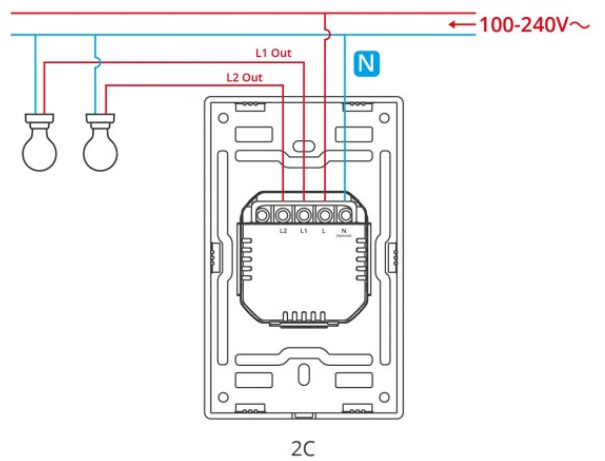
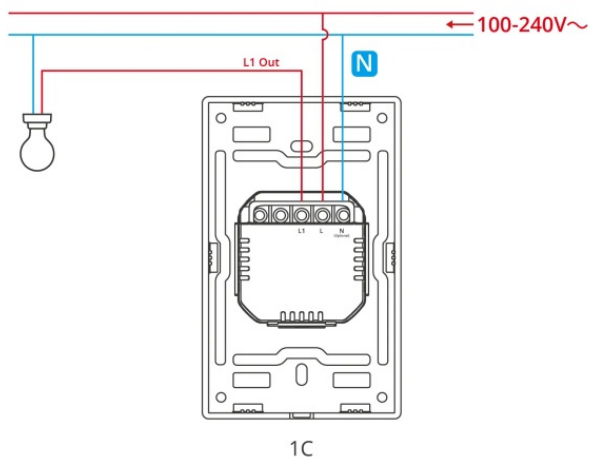
To ensure the safety of your electrical installation, it's essential either a Miniature Circuit Breaker (MCB) or a Residual Current operated Circuit-breaker with Integral Overcurrent protection(RCBO) with an electrical rating of 10A has been installed before the ZBM5-1C-120W, ZBM5-2C-120W, ZBM5-3C-120W.

No neutral required mode wiring





Neutral required mode wiring



- Choose no neutral required mode or neutral required mode according to your home’s wiring.
- In no neutral required mode: the minimum supported load is 3W, and this device does not support other types of inductive loads such as fans.
- Make sure all wires are connected correctly.

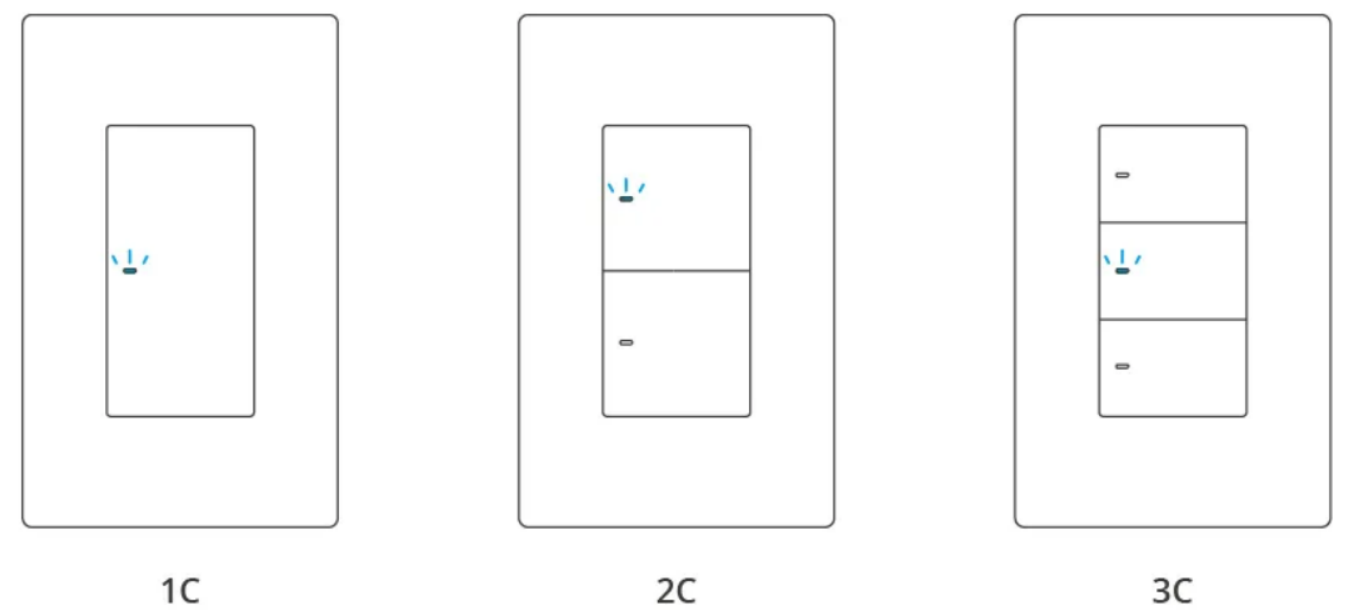
Instructions for wiring symbols

Terminals		Wires	
N Optional	Neutral Line	N	Neutral Line
L	Live Line	L	Live Line 100~240V
L out1	Live Output Terminal__1(100~240V)		
L out2	Live Output Terminal__2(100~240V)		
L out3	Live Output Terminal__3(100~240V)		

Power on

After powering on, the device will enter the pairing mode defaulted during the first use and the LED signal indicator will “flash slowly”.

The device takes 10 seconds to initialize and operate normally after the first power-on.



The device will exit the pairing mode if you do not operate it within 3mins. When you want to enter the pairing mode again, long press the any button on the device for 5 seconds until the signal light “flashes slowly” and release.

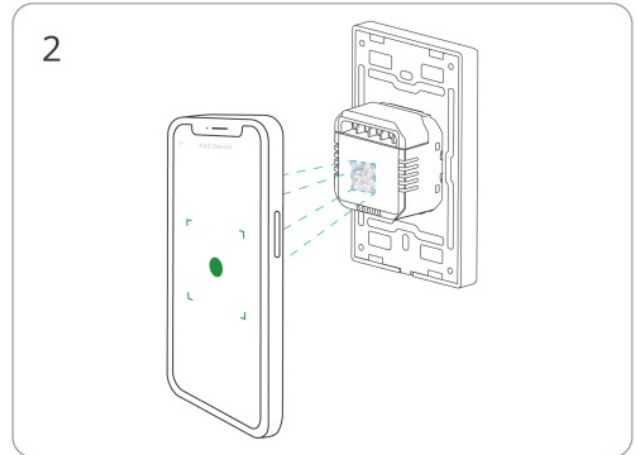
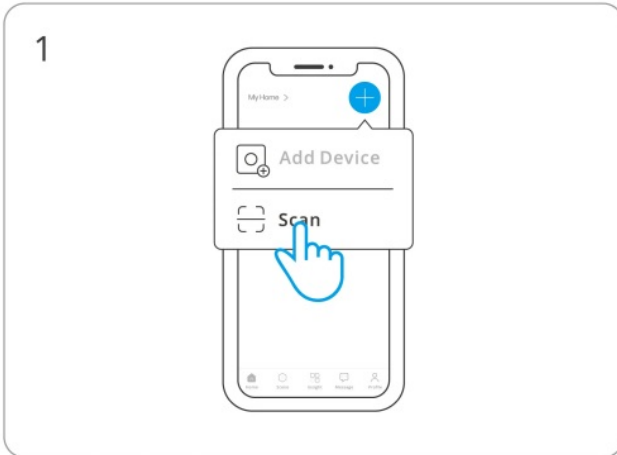
Download the eWeLink App & Add SONOFF Zigbee gateway.

Please download the ” eWeLink ” App from Google Play Store or Apple App Store .



Scan QR code to add the device

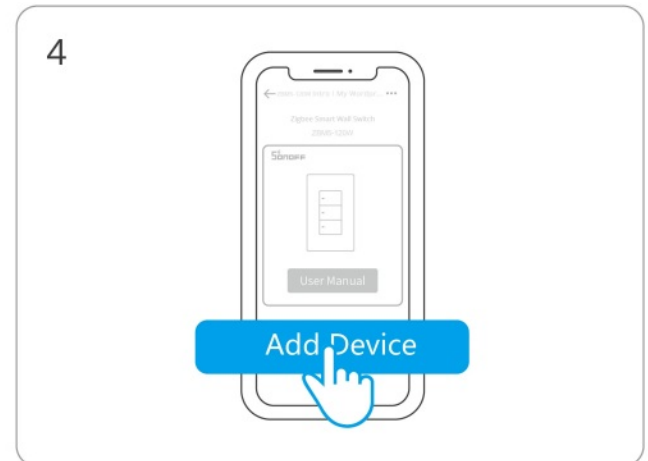
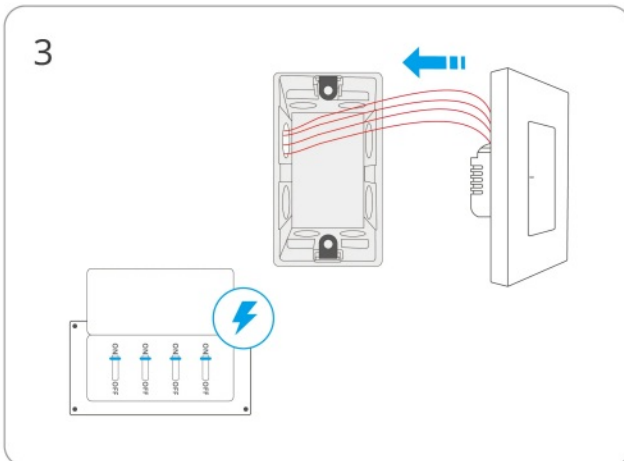
1. Enter "Scan"
2. Scan the QR code on the device



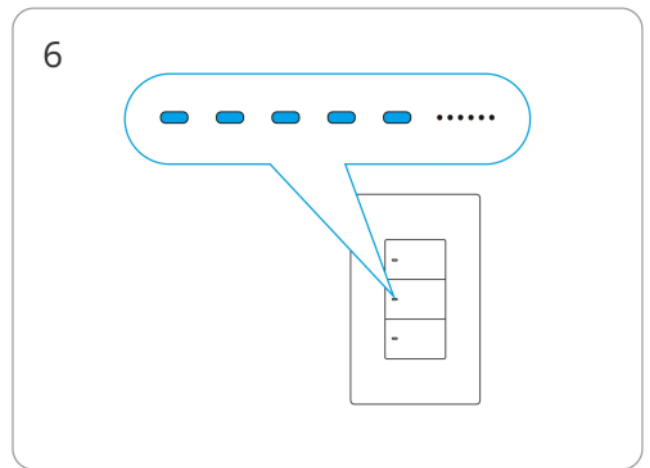
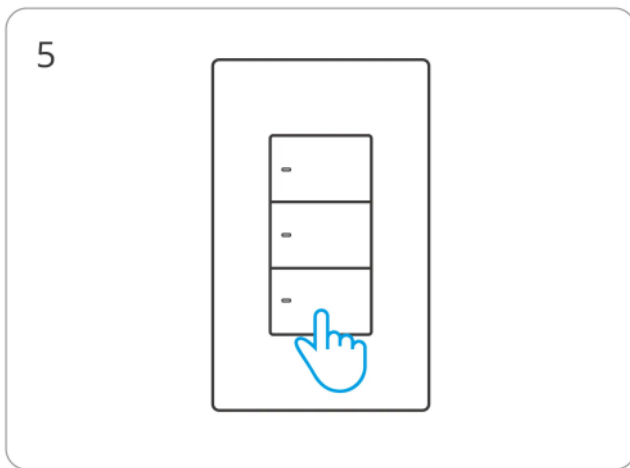
3. Please follow the wiring instructions to connect the wires.

The device takes 10 seconds to initialize and operate normally after the first power-on.

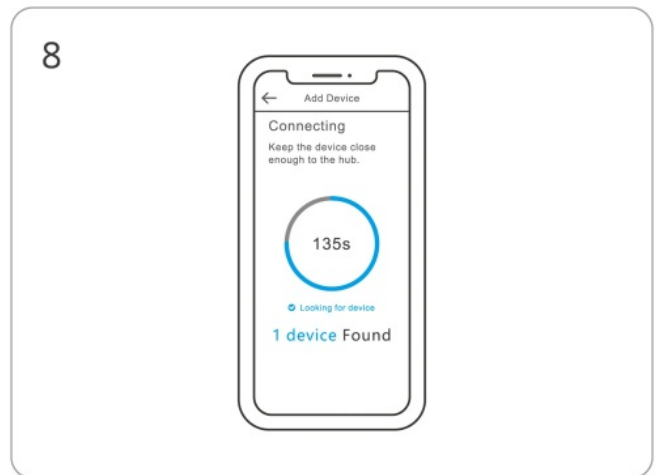
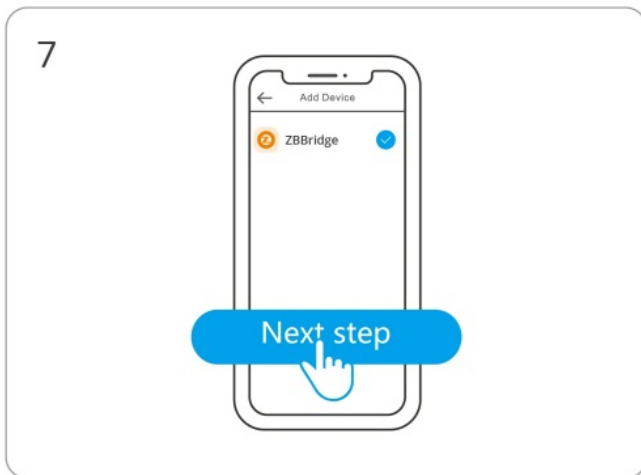
4. Select "Add Device"



5. long press the any button on the device for 5 seconds
6. LED signal indicator will "flash slowly"



7. Select Zigbee gateway
8. Wait until the addition is done



Factory Reset

Trigger conditions (any one condition met)

- Press and hold the device button for 5 seconds.
- Delete the device on eWeLink.

Switching Wiring Modes

The device automatically enters the no neutral required mode or neutral required mode based on the actual wiring during its first power-on. These modes differ in load compatibility. If you need to switch wiring modes (e.g., from no neutral required to neutral required), follow these steps:

1. Reset the Device to Factory Settings using one of these methods:
Press and hold any button on the device for more than 5 seconds.
Delete the device in the eWeLink app.
2. Turn off the power, rewire as needed, and turn the power back on.
3. The signal indicator (blue) will blink three times, indicating a mode reset.
4. Finally, re-add the device to your gateway. It will automatically adjust to the new wiring mode.

Ending

If you have any questions or need further assistance, please feel free to contact us anytime.

[illegible]

- User Manual

This website is an independent publication and is neither affiliated with nor endorsed by any of the trademark owners. The "Bluetooth®" word mark and logos are registered trademarks owned by Bluetooth SIG, Inc. The "Wi-Fi®" word mark and logos are registered trademarks owned by the Wi-Fi Alliance. Any use of these marks on this website does not imply any affiliation with or endorsement.