

**SonOFF**<sup>®</sup>  
M5 Series SwitchMan  
Smart Wall Switch



# SonOFF M5 Series SwitchMan Smart Wall Switch User Manual

[Home](#) » [SonOFF](#) » SonOFF M5 Series SwitchMan Smart Wall Switch User Manual 

## Contents

- [1 SonOFF M5 Series SwitchMan Smart Wall Switch](#)
- [2 Product Information](#)
- [3 Product Usage Instructions](#)
- [4 Introduction](#)
- [5 Matter-compatible ecosystem](#)
- [6 Specification](#)
- [7 Installation](#)
- [8 Add device](#)
- [9 Device Network Changing](#)
- [10 FAQ](#)
- [11 FCC compliance statement](#)
- [12 EU Declaration of Conformity](#)
- [13 Documents / Resources](#)
  - [13.1 References](#)

**SonOFF**<sup>®</sup>

**SonOFF M5 Series SwitchMan Smart Wall Switch**



## Product Information

### Specifications

- **Model:** M5-1C-120W, M5-2C-120W, M5-3C-120W
- **Microcontroller Unit (MCU):** ESP32
- **Rating:** 1C: 100-240V ~ 50/60Hz 10A Max, 2C: 100-240V ~ 50/60Hz 5A/Gang 10A Total Max, 3C: 100-240V ~ 50/60Hz 2A/Gang 6A Total Max
- **Max. Load:** 1C: 2200W, 2C: 2200W(1-1100W/Gang), 3C: 1320W(1-440W/Gang)
- **LED Load:** 1C: 300W/220V, 150W/110V, 2C: 300W/220V/Gang, 150W/110V/Gang, 3C: 100W/220V/Gang, 60W/110V/Gang
- **Wireless Connectivity:** IEEE 802.11 b/g/n 2.4GHz
- **Net Weight:** 1C(177.5g), 2C(184g), 3C(186g)
- **Dimension:** 120x74x41.5mm
- **Color:** White
- **Casing Material:** PC V0+CRS
- **Applicable Place:** Indoor
- **Working Temperature:** -10 ~40°C
- **Working Humidity:** 5%~95% RH, non-condensing
- **Certified Compliance:** CE/FCC/ISED/RoHS
- **Executive Standard:** EN 60669-2-1

## Product Usage Instructions

### Installation

#### 1. Power off:

- Please install and maintain the device by a professional electrician.

- Avoid operating any connection or contact the terminal connector while the device is powered on.

## **2. Wiring instruction:**

- Ensure either a Miniature Circuit Breaker (MCB) or a Residual Current Operated Circuit Breaker (RCBO) with an electrical rating has been installed.
- Make sure all wires are connected correctly.

## **3. Power on:**

- The device will enter Pairing Mode by default during the first use.
- The LED indicator flashes in a cycle of two short and one long.

## **Method 1: Matter Pairing**

1. Open a Matter-compatible App (e.g., Alexa App, Google Home App, or Apple Home App).
2. Scan the Matter QR code on the Quick Guide or the device itself to add the device.

## **Method 2: eWeLink App Pairing**

1. Download the eWeLink App from Google Play Store or Apple App Store.
2. Scan the QR code on the device to add the device.

Please follow the wiring instructions to connect the wires (ensure power is disconnected in advance and consult an electrician if needed).

## **FAQ**

### **Q: How do I know if the device is in pairing mode?**

**A:** The LED indicator will flash in a cycle of two short and one long when the device is in pairing mode.

### **Q: Can I control multiple devices with a single switch?**

**A:** Yes, you can control multiple devices using the group control feature available in the app.

### **Q: What should I do if the device does not pair within 10 minutes?**

**A:** Long press the button for 5 seconds until the LED indicator flashes in a cycle of two short and one long to re-enter pairing mode.

## **Introduction**

This device is a smart physical wall switch. After pairing it with the eWeLink App, you can turn on/off the connected devices via the smartphone wherever you are, schedule it on/off, share it with your families to control together, etc.



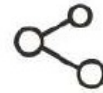
Remote Control



Single/Countdown



Voice Control



Share Control



Smart Scene



Inching Mode



Camera Linking



Group Control



History Operation



LAN Control

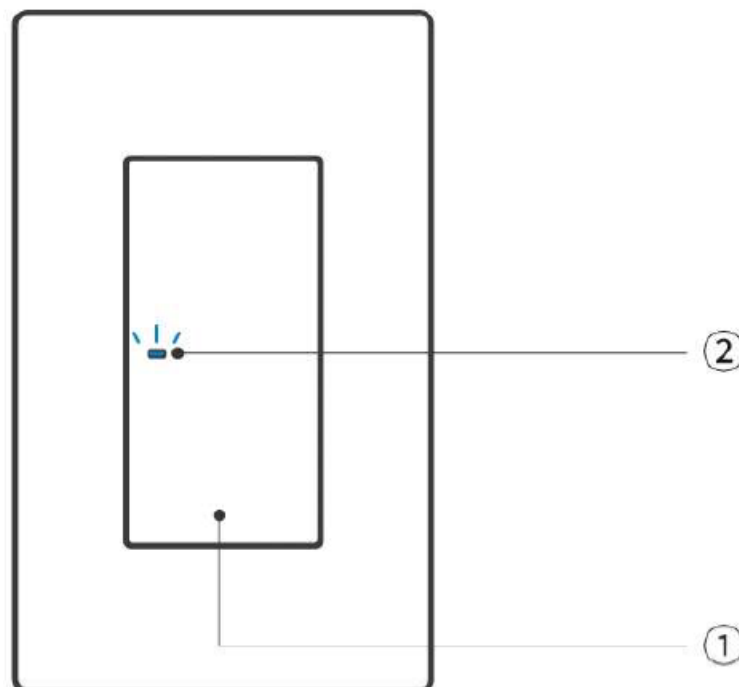
Record

## 1. Button

- **Press once:** Turn on/off the Device.
- **Press and hold for 5 seconds:** The device enters the pairing mode.

## 2. Wi-Fi LED indicator (Blue)

- eWeLink Mode
- **Keeps on:** The device is online.
- **Flashes twice:** LAN
- **Flashes once:** Offline
- **Flashes two short and one long:** The device is in pairing mode.



## Matter Mode

- **Keeps on:** The device is online.
- **Flashes once:** Offline
- **Flashes two short and one long:** The device is in pairing mode.
- **Flashes three times:** Identify

## Matter-compatible ecosystem

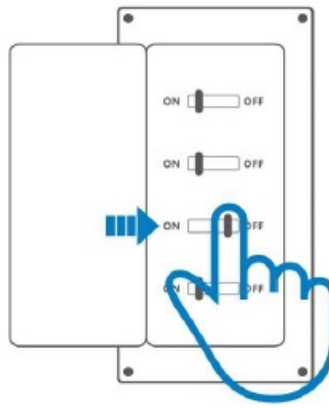


## Specification

Model	M5-1C-120W, M5-2C-120W, M5-3C-120W
MCU	ESP32
Rating	1C: 100-240V ~ 50/60Hz 10A Max 2C: 100-240V ~ 50/60Hz 5A/Gang 10A Total Max 3C: 100-240V ~ 50/60Hz 2A/Gang 6A Total Max
Max. load	1C: 2200W 2C: 2200W(1-1100W/Gang) 3C: 1320W(1-440W/Gang)
LED load	1C: 300W/220V, 150W/110V 2C: 300W/220V/Gang, 150W/110V/Gang 3C: 100W/220V/Gang, 60W/110V/Gang
Wireless Connectivity	IEEE 802.11 b/g/n 2.4GHz
Net Weight	1C(177.5g) 2C(184g) 3C(186g)
Dimension	120x74x41.5mm
Color	White
Casing Material	PC V0+CRS
Applicable Place	Indoor
Working Temperature	-10°C~40°C
Working Humidity	5%~95% RH, non-condensing
Certified Compliance	CE/FCC/ISED/RoHS
Executive standard	EN 60669-2-1

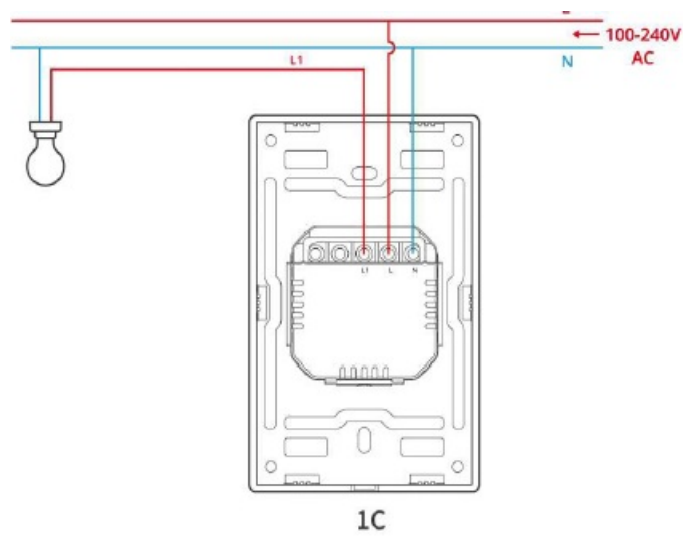
## Installation

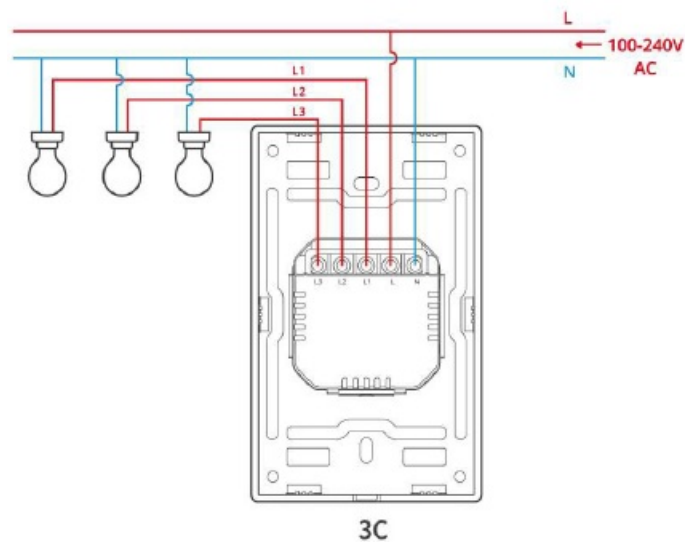
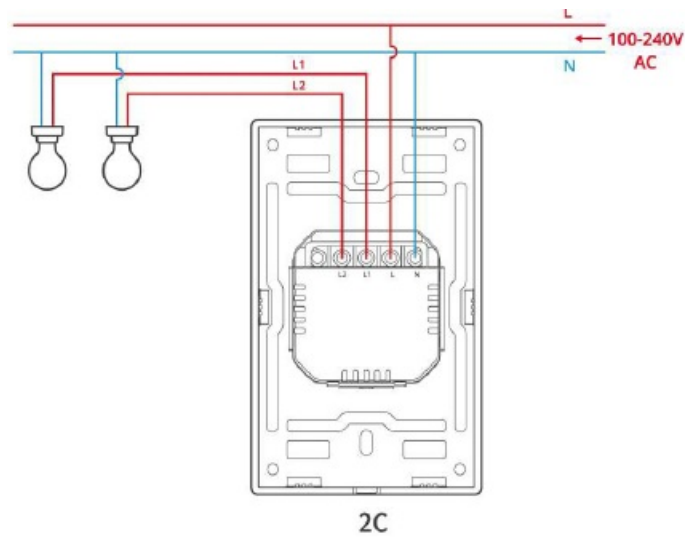
### 1. Power off



- Please install and maintain the device by a professional electrician. To avoid electric shock hazards, do not operate any connection or contact the terminal connector while the device is powered on!

## 2. Wiring instruction

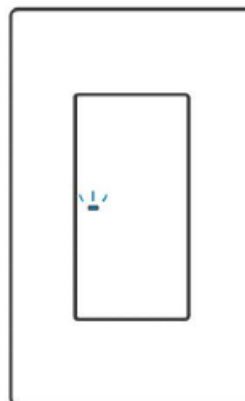




- To ensure the safety of your electrical installation, it's essential either a Miniature Circuit Breaker (MCB) or a Residual Current Operated Circuit Breaker (RCBO) with an electrical rating of 10A 1C,2C),6A 3C)has been installed before the M5-120W.
- Make sure all wires are connected correctly.

### 3. Power on

- After powering on, the device will enter the Pairing Mode defaulted during the first use, and the
- The LED indicator flashes in a cycle of two short and one long.



- The device will exit the Pairing Mode if it is not paired within 10 minutes. If you want to enter this mode again, please long press the button for 5s until the LED indicator flashes in a cycle of two short and one long, and then release.

## Add device

### Method 1: Matter Pairing

Open a Matter-compatible App ( e.g. Alexa App, Google Home App, or Apple Home App, etc ) to scan the Matter QR code on the Quick Guide or the device itself to add the device.



Add to Alexa via Matter



Add to Google via Matter

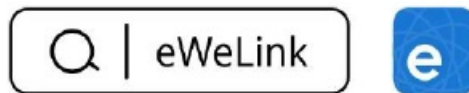


Add to Apple via Matter

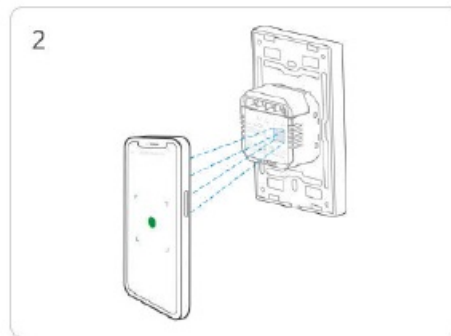
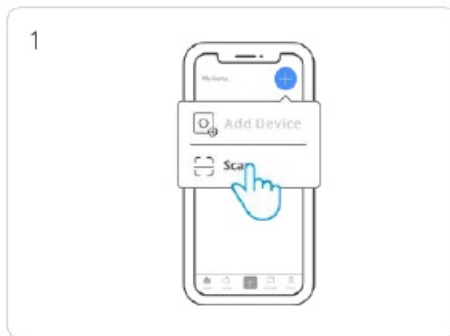
### Method 2: eWeLink App Pairing

#### 1. Download the “eWeLink” App

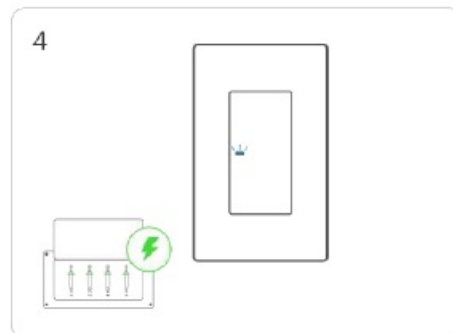
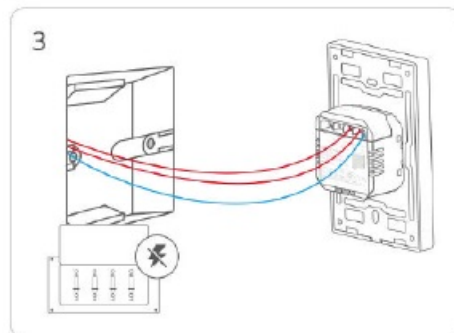
- Please download the “eWeLink” App from the Google Play Store or Apple App Store.



#### 2. Add device

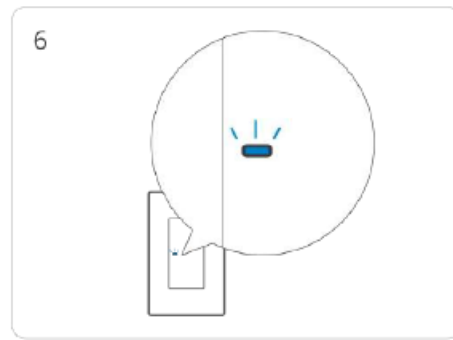
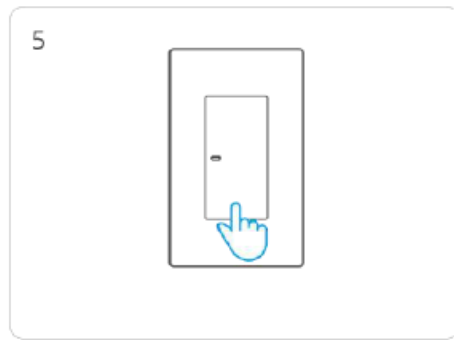


- Enter “Scan”
- Scan the QR code on the device



- Please follow the wiring instructions to connect the wires (ensure power is disconnected in advance and consult an electrician if needed)
- Power on the device

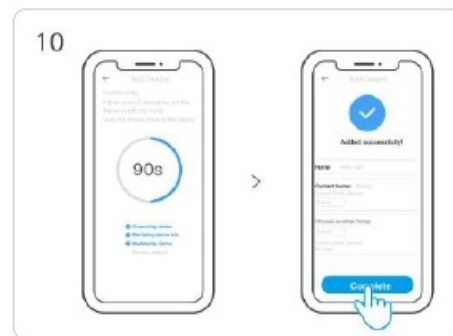
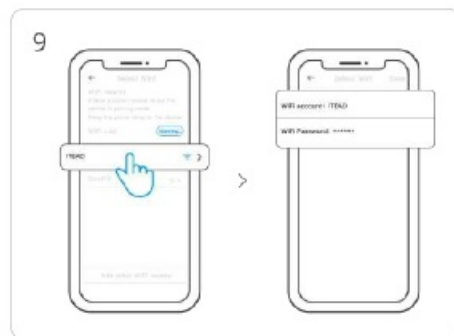




- Long press the button for 5 seconds
- Check the Wi-Fi LED indicator flashing status (Two short and one long)



- Select "Add Device"
- Search for the device and start connecting



- Select the "Wi-Fi" network and enter the password.
- Device "Added completely".

## Device Network Changing

Change the device's network by "Wi-Fi Settings" in the "Device Settings" page on the eWeLink App.

## Device Factory Reset (Dual Ecosystem)

- After "Delete the Device" in the eWeLink App
- For devices previously successfully added to eWeLink, perform a new pairing using a different eWeLink account
- For devices previously successfully added in Matter, perform a new Bluetooth Pairing through Matter

## FAQ

### Fail to pair Wi-Fi devices with the eWeLink APP

1. Make sure the device is in pairing mode.

- The device will automatically exit the pairing mode if not paired within 10 minutes.
2. Please turn on the location service on your mobile phone and give permission.
    - Before choosing the Wi-Fi network, the location service should be turned on and permission is given. Location information permission is used to obtain Wi-Fi list information. If you tap Disable", the device will not be added.
  3. Make sure your Wi-Fi network runs on the 2.4GHz band.
  4. Make sure you entered the correct Wi-Fi SSID and password, with no special characters contained. A wrong password is a very common reason for pairing failure.
  5. You may get the device close to the router for a good signal transmission while pairing.
  6. Please try to pair the device in the compatible mode.

### **Wi-Fi devices "Offline" issues**

**Please check the following issues by the Wi-Fi LED indicator status:**

1. The LED indicator blinks once every 2s means you failed to connect to the router.
2. Maybe you entered the wrong Wi-Fi SSID and password.
3. Make sure your Wi-Fi SSID and password don't contain special characters, for example, the Hebrew, or Arabic characters. Our system can't recognize these characters so they fail to connect to the Wi-Fi.
4. Maybe your router has a lower carrying capacity.
5. Maybe the Wi-Fi signal strength is weak. Your router is too far away from your device, or there may be some obstacles between the router and the device so that the signal transmission is blocked.
6. Be sure that the MAC of the device is not on the blacklist of your MAC management.

### **The LED indicator flashes twice on repeated means you failed to connect to the server**

1. Make sure the Internet connection is normal. You can use your phone or PC to connect to the Internet, and if you fail to access it, please check the availability of the Internet connection.
2. Maybe your router has a low carrying capacity. The number of devices connected to the router exceeds its maximum value. Please check the maximum number of devices that your router can carry.
  - If the number of connected devices exceeds the maximum value, please delete some devices or change to a larger router and try again.
3. Please contact your ISP and confirm our server address is not shielded.
  - **cn-disp.coolkit.cc** (China Mainland)
  - **as-disp.coolkit.cc** (in Asia except China)
  - **eu-disp.coolkit.cc** (in EU)
  - **us-disp.coolkit.cc** (in US)
  - If none of the above methods solved this problem, please submit your issue via feedback on the eWeLink App.

### **FCC compliance statement**

1. This device complies with part 15 of the FCC Rules. Operation is subject to the following two conditions:
  - This device may not cause harmful interference, and

- This device must accept any interference received, including interference that may cause undesired operation.
2. Changes or modifications not expressly approved by the party responsible for compliance could void the user's authority to operate the equipment.

**Note:** This equipment has been tested and found to comply with the limits for a Class B digital device, under part 15 of the FCC Rules. These limits are designed to provide reasonable protection against harmful interference in a residential installation. This equipment generates, uses, and can radiate radio frequency energy and, if not installed and used in accordance with the instructions, may cause harmful interference to radio communications. However, there is no guarantee that interference will not occur in a particular installation. If this equipment does cause harmful interference to radio or television reception, which can be determined by turning the equipment off and on, the user is encouraged to try to correct the interference by one or more of the following measures:

- Reorient or relocate the receiving antenna.
- Increase the separation between the equipment and the receiver.
- Connect the equipment to an outlet on a circuit different from that to which the receiver is connected.
- Consult the dealer or an experienced radio/TV technician for help.

#### **FCC Radiation Exposure statement:**

This equipment complies with FCC radiation exposure limits set forth for an uncontrolled environment.

This equipment should be installed and operated with a minimum distance of 20 cm between the radiator and your body.

This transmitter must not be co-located or operating in conjunction with any other antenna or transmitter.

#### **ISED Notice**

This device contains license-exempt transmitter(s)/receiver(s) that comply with Innovation, Science, and Economic Development Canada's license-exempt RSS(s). Operation is subject to the following two conditions:

1. This device may not cause interference.
2. This device must accept any interference, including interference that may cause undesired operation of the device.

This Class B digital apparatus complies with Canadian ICES-003(B).

This device complies with RSS-247 of Industry Canada. Operation is subject to the condition that this device does not cause harmful interference.

#### **ISED Radiation Exposure Statement**

This equipment complies with ISED radiation exposure limits set forth for an uncontrolled environment.

This equipment should be installed and operated with a minimum distance of 20 cm between the radiator and your body.

This transmitter must not be co-located or operating in conjunction with any other antenna or transmitter.

#### **SAR Warning**

Under normal use conditions, this equipment should keep a separation distance of at least 20 cm between the antenna and the body of the user.

## WEEE Warning

WEEE Disposal and Recycling Information All products bearing this symbol are waste electrical and electronic equipment (WEEE as in directive 2012/19/EU) which should not be mixed with unsorted household waste. Instead, you should protect human health and the environment by handing over your waste equipment to a designated collection point for the recycling of waste electrical and electronic equipment, appointed by the government or local authorities. Correct disposal recycling will help prevent potential negative consequences to the environment and human health. Please contact the installer or local authorities for more information about the location as well as the terms and conditions of such collection points.


## EU Declaration of Conformity

- Hereby, Shenzhen Sonoff Technologies Co., Ltd declares that the radio equipment type [M5-1C-120W M5-2C-120W M5-3C-120W ] complies with Directive 2014/53/EU.
- The full text of the EU Declaration of Conformity is available at the following internet address:  
<https://sonoff.tech/compliance/>

Box	Box	Manual	Bag	Bag
PAP 20	PAP 21	PAP 22	CPE 7	LDPE 4
Carta	Carta	Carta	Plastic	Plastic
WASTE SORTING				
Check the provisions of your municipality. Separate the components and assign them correctly.				

- **Manufacturer:** Shenzhen Sonoff Technologies Co., Ltd.
- **Address:** 3F & 6F, Bldg A, No. 663, Bulong Rd, Shenzhen, Guangdong, China
- **ZIP code:** 518000 **Service email:** [support@itead.cc](mailto:support@itead.cc)
- **Website:** [sonoff.tech](https://sonoff.tech) Made in China

## Documents / Resources

	<a href="#">SonoFF M5 Series SwitchMan Smart Wall Switch</a> [pdf] User Manual M5-1C-120W, M5-2C-120W, M5-3C-120W, M5 Series SwitchMan Smart Wall Switch, M5 Series , SwitchMan Smart Wall Switch, Smart Wall Switch, Wall Switch, Switch
---	--

## References

- [🌐 Welcome to OpenResty!](#)
- [🌐 Welcome to OpenResty!](#)
- [🌐 Welcome to OpenResty!](#)
- [User Manual](#)

This website is an independent publication and is neither affiliated with nor endorsed by any of the trademark owners. The "Bluetooth®" word mark and logos are registered trademarks owned by Bluetooth SIG, Inc. The "Wi-Fi®" word mark and logos are registered trademarks owned by the Wi-Fi Alliance. Any use of these marks on this website does not imply any affiliation with or endorsement.