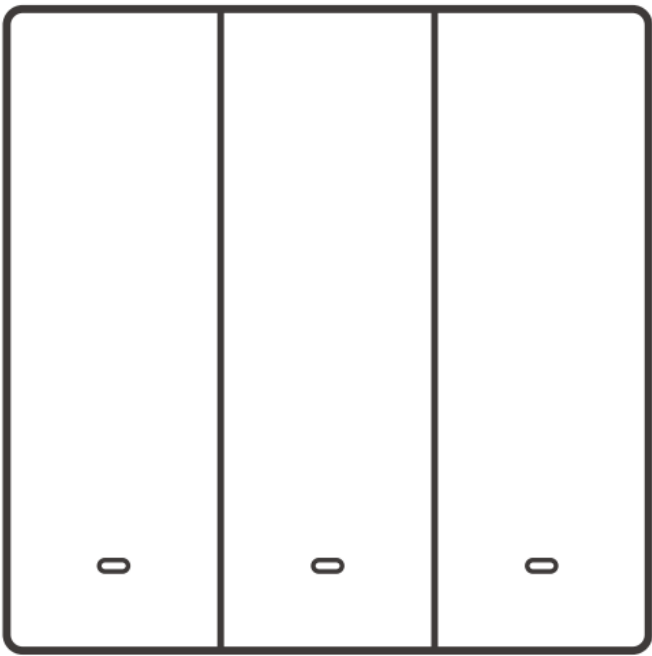
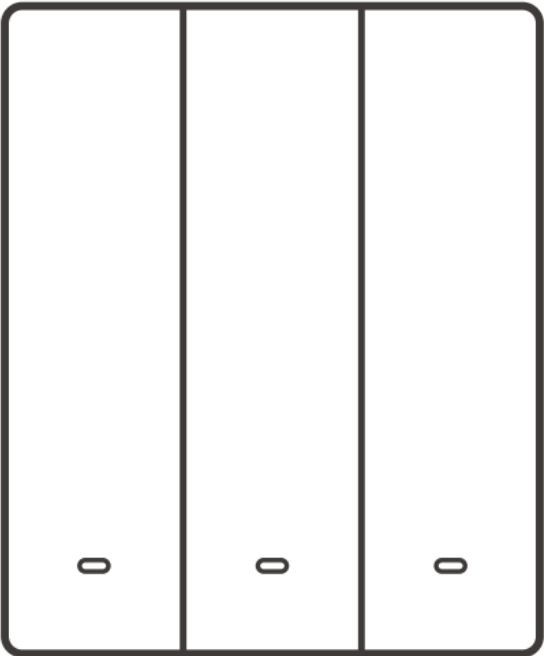




SONOFF M5-80 Switch Man Smart Wall Switch User Guide

[Home](#) » [SonOFF](#) » SONOFF M5-80 Switch Man Smart Wall Switch User Guide 

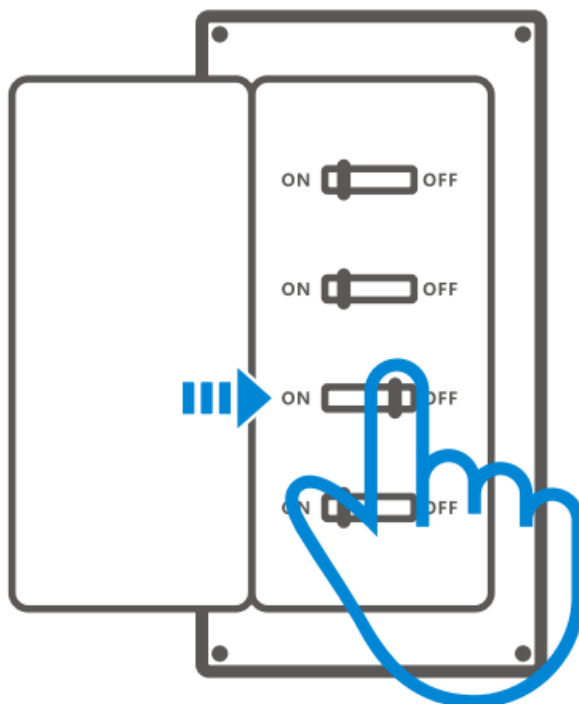
SONOFF M5-80 Switch Man Smart Wall Switch



Contents

- 1 Power off
- 2 Wiring instruction
- 3 Download the eWelink App
- 4 Power on
- 5 Add device
- 6 User Manual
- 7 EU Declaration of Conformity
- 8 EU Operation frequency Range
- 9 WEEE Warning
- 10 Customers Support
- 11 Documents / Resources
 - 11.1 References

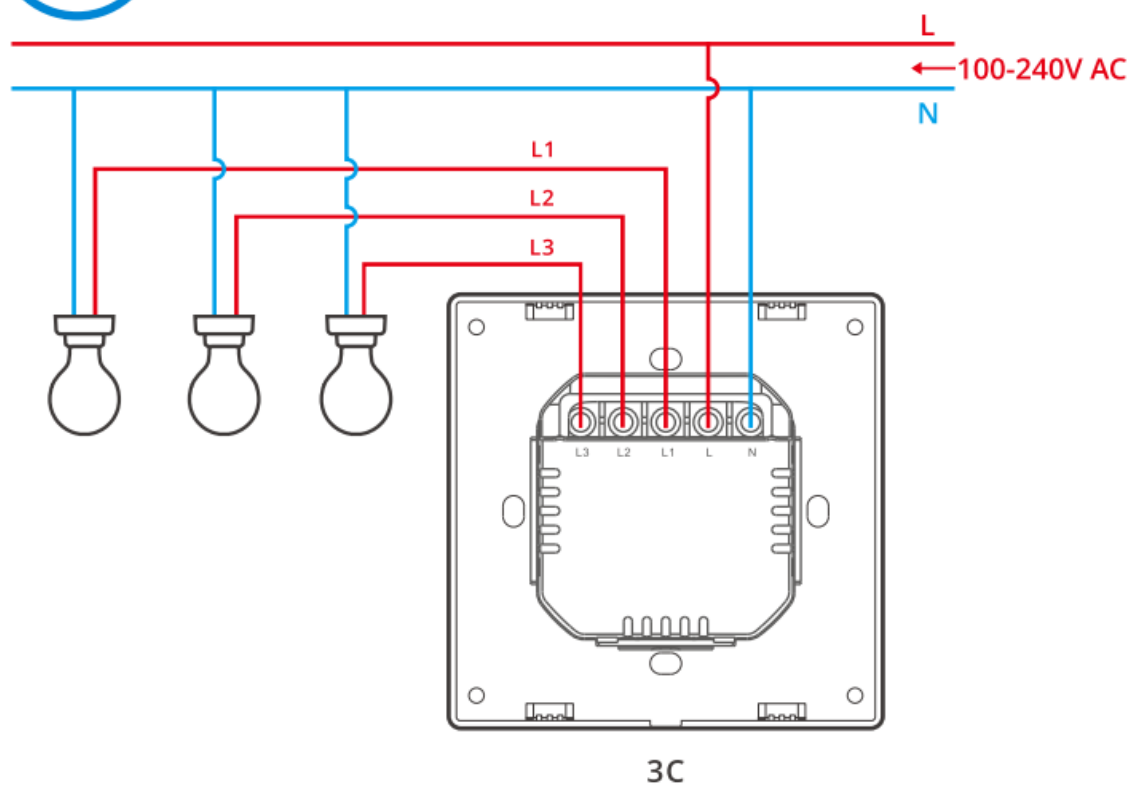
Power off



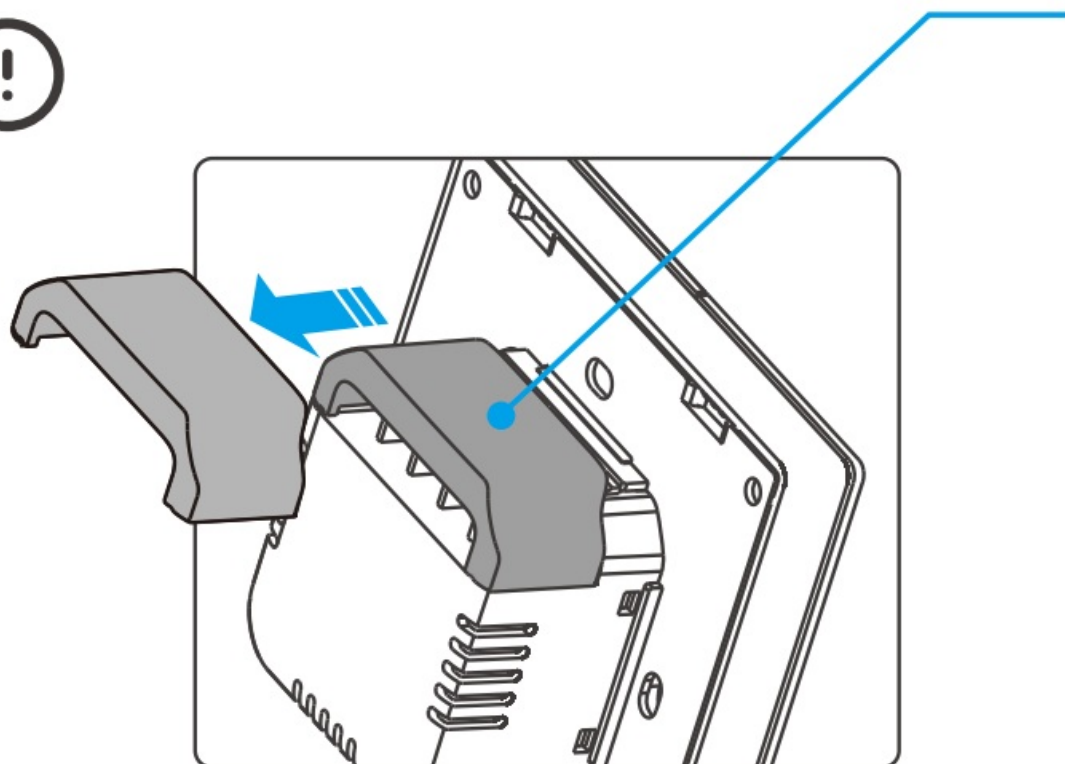
Please install and maintain the device by a professional electrician. To avoid electric shock hazard, do not operate any connection or contact the terminal connector while the device is powered on!

Wiring instruction

2



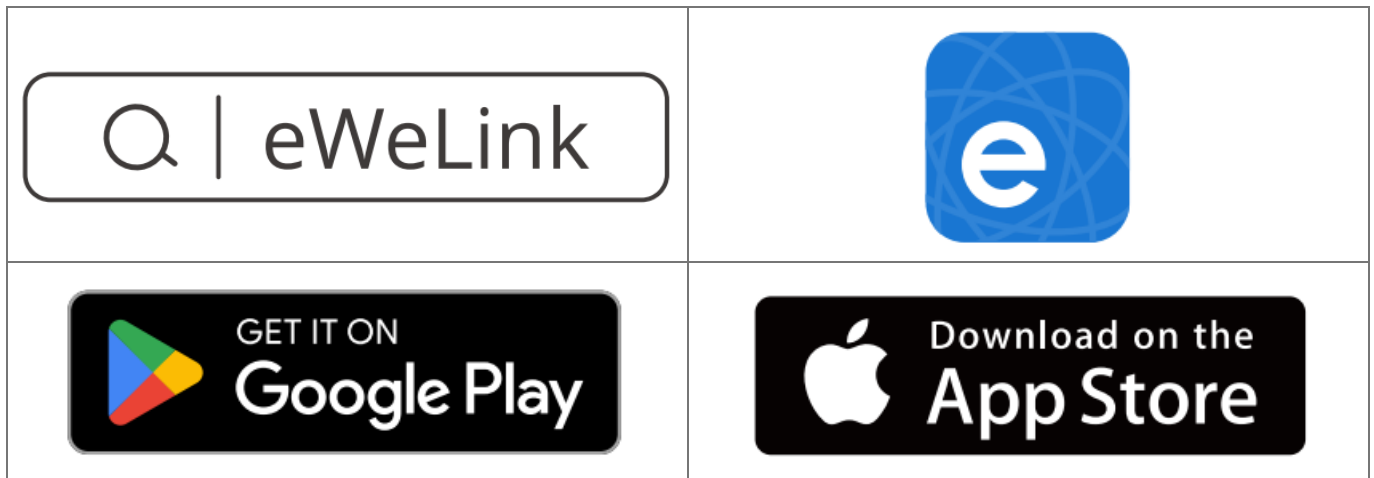
Protective cover



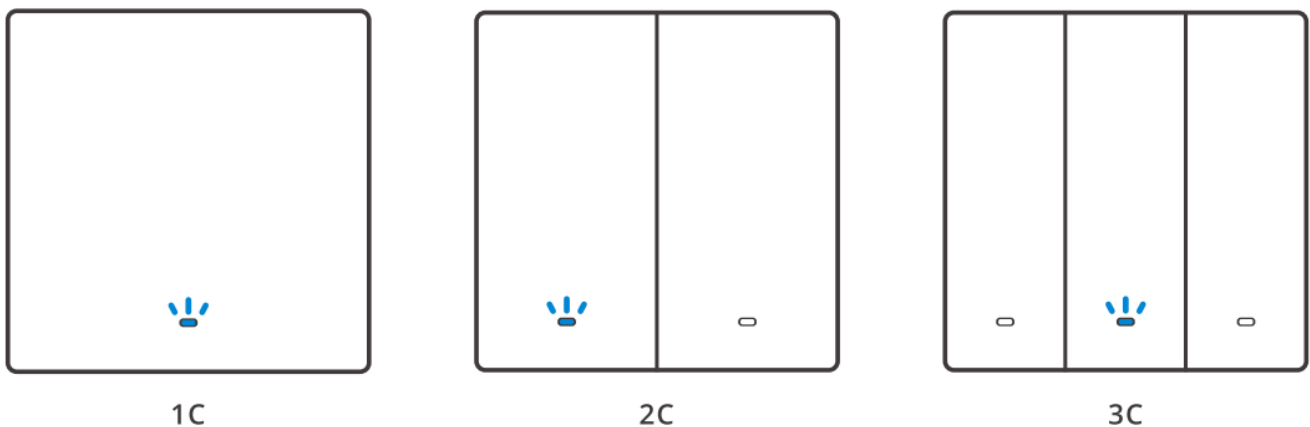
ⓘ When the wall-mounting box is made of plastic and the size is small, the protective cover can be omitted .

Make sure all wires are connected correctly.

Download the eWeLink App



Power on



After powering on, the device will enter the Pairing Mode during the first use.
The Wi-Fi LED indicator changes in a cycle of two short and one long flash and release.

The device will exit the Pairing Mode if not paired within 10mins. If you want to enter this mode, please long press any pairing button for about SSD until the Wi-Fi LED indicator changes in a cycle of two short and one long flash and release.

Matter QR code

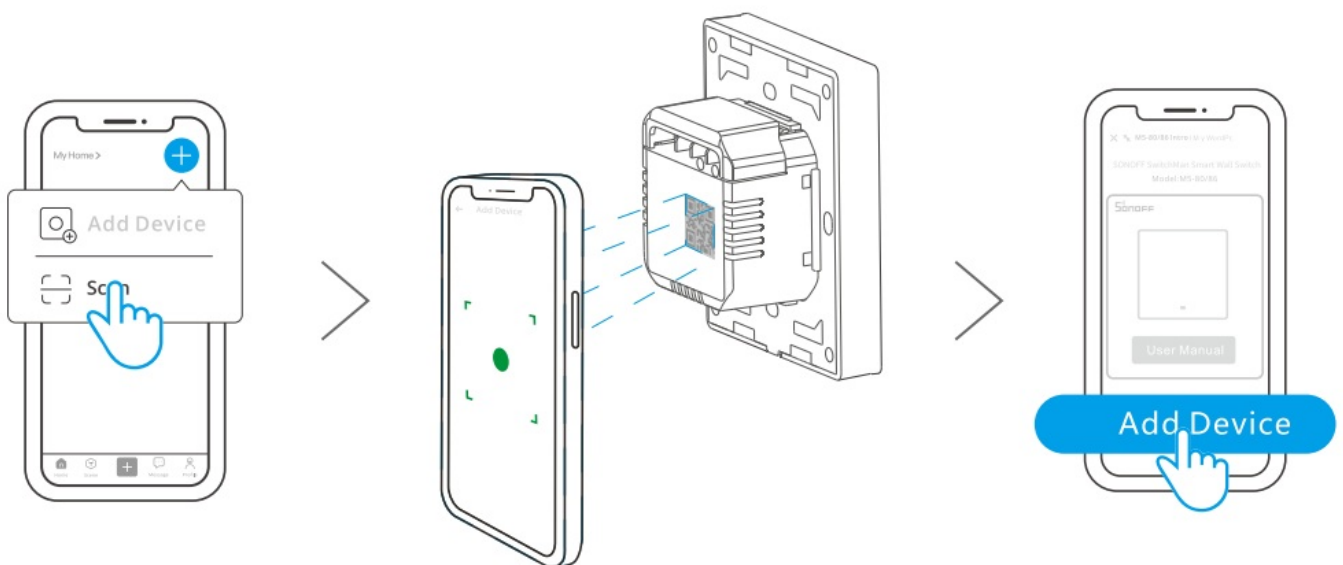


Add device

Method 1: Matter Pairing

Open a Matter-compatible App (e.g. Alexa App, Apple Home App, or Google Home App, etc) to scan the Matter QR code on the Quick Guide or the device itself to add the device.

Method 2: Scan QR Code to Add Device



Open the eWelink App and scan the QR code on the device, then follow the instructions given by the app to proceed .

Note: If the page doesn't display after scanning the code, please power on the device and then click the '+' button in the top right corner of the eWelink App homepage. Select 'Add Device' to proceed.

User Manual



<https://sonoff.tech/usermanuals>

Scan the QR code or visit the website to learn about the detailed user manual and help.

Box	Box	Manual	Bag	Bag
PAP 20	PAP 21	PAP 22	CPE 7	LDPE 4
Carta	Carta	Carta	Plastic	Plastic
WASTE SORTING				
Check the provisions of your municipality. Separate the components and assign them correctly.				

SAR Warning

Under normal use of condition, this equipment should be kept a separation distance of at least 20 cm between the antenna and the body of the user.

To ensure the safety of your electrical installation, it's essential either a Miniature Circuit Breaker (MCB) or a Residual Current operated Icebreaker with Integral Overcurrent protection(RCBO) with an electrical rating of 1 0A (1 C, 2C), 6A (3C) has been installed before the MS-1 C-80, MS- 2C-80, MS-3C-80, MS-1 C-86, MS-2C-86, MS-3C-86, MS-1 C-80W, MS-2C- 80W, MS-3C-80W, MS-1C-86W, MS-2C-86W, MS-3C-86W.

EU Declaration of Conformity

Hereby, Shenzhen Sonoff Technologies Co., Ltd declares that the radio equipment type MS-1 C-80, M5-2C-80, M5-3C-80, MS-1 C-86, M 5-2C-86, M5-3C-86, MS-1 C-80W, M5-2C-80W, M5-3C-80W, MS-1 C-86W, M5-2C-86W, M5-3C-86W.is in compliance with Directive 2014/53/EU. The full text of the EU declaration of conformity is available at the following internet address: <https://sonoff.tech/compliance/>

EU Operation frequency Range

Wi-Fi:

802.11 b/g/n20:2412-2472M Hz

802.11 n40:2422-2462MHz

BLE:2402-2480M Hz

EU RF Output Power:

Wi-Fi 2.4G<20dBm

BLE<1 0dBm

WEEE Warning

WEEE Disposal and Recycling Information All products bearing this symbol are waste electrical and electronic equipment (WEEEs in directive 2012/19/EU) which should not be mixed with unsorted household waste. Instead, you should protect human health and the environment by handing over your waste equipment to a designated collection point for the recycling of waste electrical and electronic equipment, appointed by the government or local authorities. Correct disposal and recycling will help prevent potential negative consequences to the environment and human health. Please contact the installer or local authorities for more information about the location as well as terms and conditions of such collection points.

Customers Support**Shenzhen Sonoff Technologies Co., Ltd.**

3F & 6F, Bldg A, No. 663, Bu long Rd, Shenzhen, Guangdong, China

ZIP code: 518000 Website: sonoff.techService email: support@itead.cc

MADE IN CHINA



Documents / Resources

	SONOFF M5-80 Switch Man Smart Wall Switch [pdf] User Guide M5-80 Switch Man Smart Wall Switch, M5-80, Switch Man Smart Wall Switch, Man Smart Wall Switch, Smart Wall Switch, Wall Switch
---	--

References

- [User Manual](#)

[Manuals+](#), [Privacy Policy](#)

This website is an independent publication and is neither affiliated with nor endorsed by any of the trademark owners. The "Bluetooth®" word mark and logos are registered trademarks owned by Bluetooth SIG, Inc. The "Wi-Fi®" word mark and logos are registered trademarks owned by the Wi-Fi Alliance. Any use of these marks on this website does not imply any affiliation with or endorsement.