



SONOFF M5-120 SwitchMan Push Button Switch User Guide

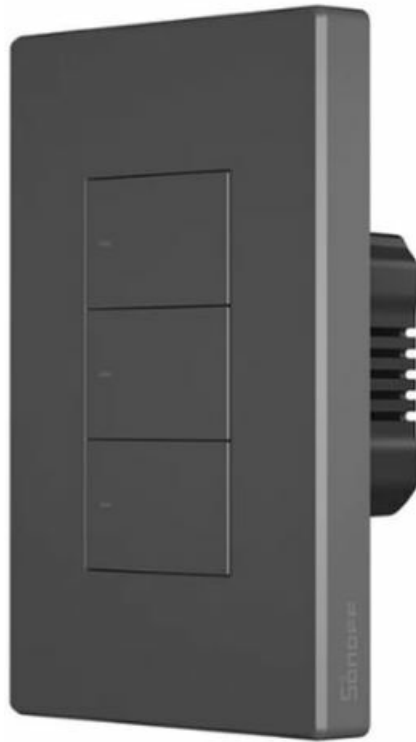
[Home](#) » [SonOFF](#) » SONOFF M5-120 SwitchMan Push Button Switch User Guide 

Contents

- [1 SONOFF M5-120 SwitchMan Push Button Switch](#)
- [2 INSTALLATION](#)
- [3 Add device](#)
- [4 FCC compliance statement](#)
- [5 Documents / Resources](#)
 - [5.1 References](#)
- [6 Related Posts](#)

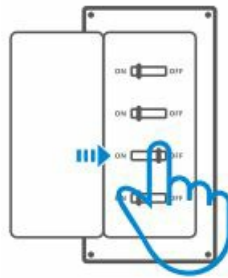


SONOFF M5-120 SwitchMan Push Button Switch



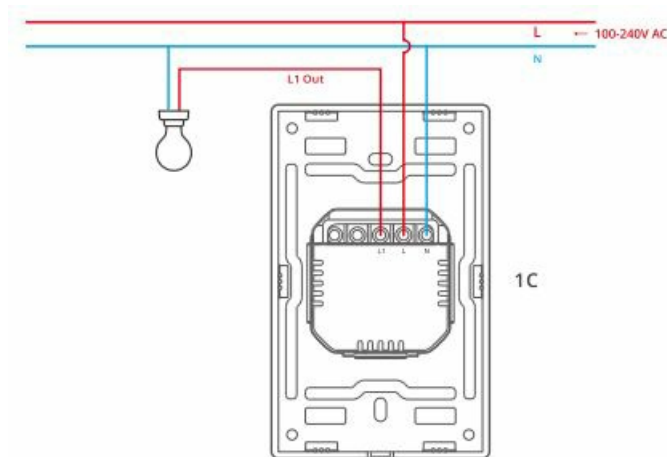
INSTALLATION

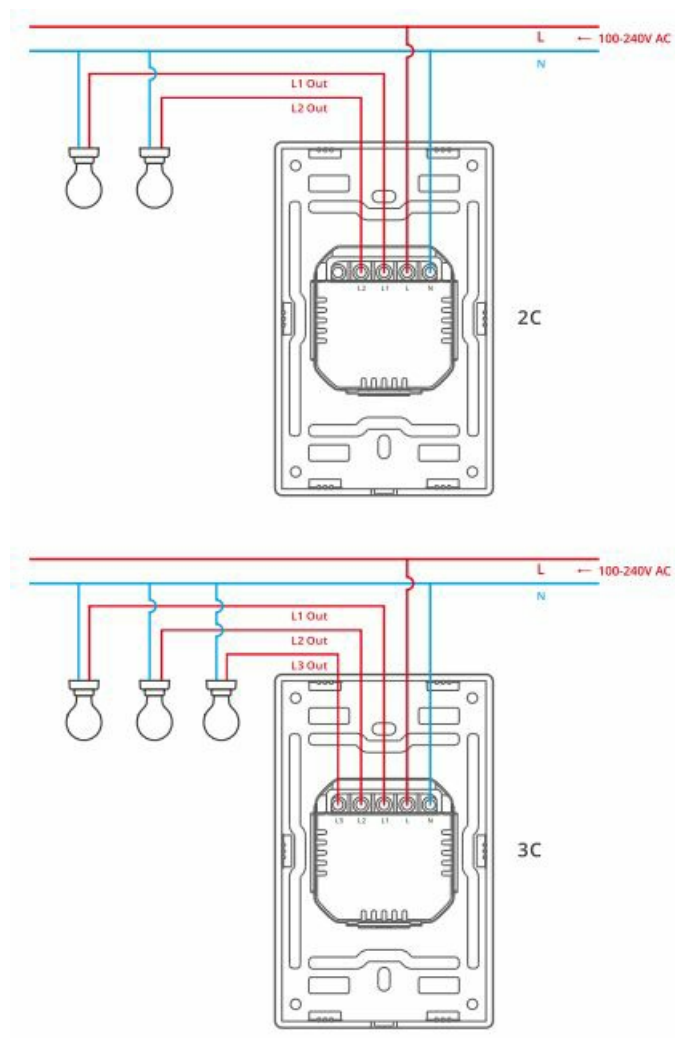
Power Off



Please install and maintain the device by a professional electrician. To avoid electric shock hazard, do not operate any connection or contact the terminal connector while the device is powered on!

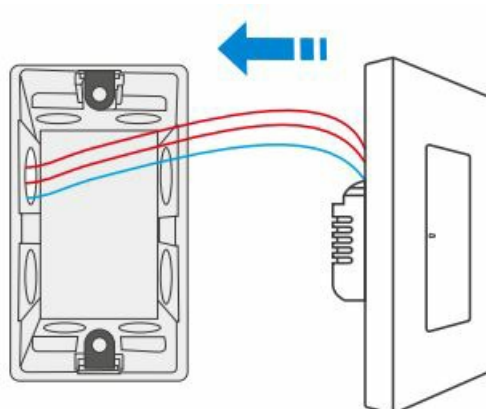
Wiring instruction





Make sure all wires are connected correctly.

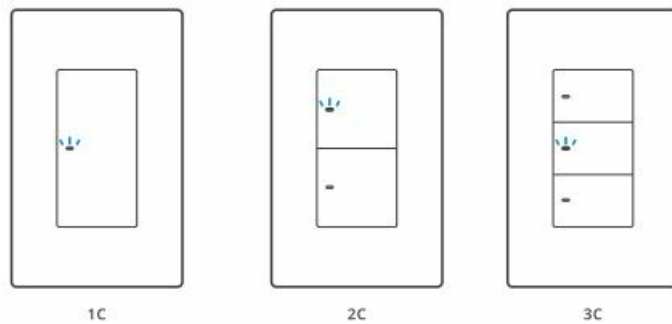
Equipment Installation



Download the eWeLink App

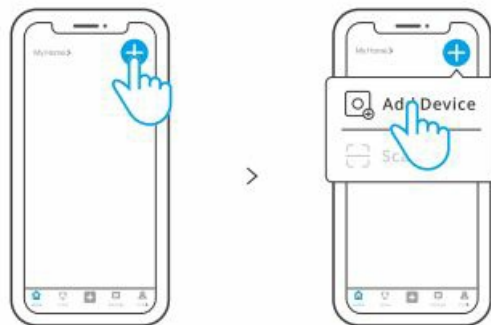


Power on



After powering on, the device will enter the Bluetooth Pairing Mode during the first use. The Wi-Fi LED indicator changes in a cycle of two short and one long flash and red light. The device will exit the Bluetooth Pairing Mode if not paired within 3mins. If you want to enter this mode, please long press any pairing button for about 5s until the Wi-Fi LED indicator changes in a cycle of two short and one long flash and release.

Add device



Tap “+” and select “Add Device”, then operate following the prompt on the App

User Manual



<https://sonoff.tech/usermanuals>

FCC compliance statement

1. This device complies with part 15 of the FCC Rules. Operation is subject to the following two conditions:
 1. This device may not cause harmful interference, and
 2. This device must accept any interference received, including interference that may cause undesired operation.
2. Changes or modifications not expressly approved by the party responsible for compliance could void the user's authority to operate the equipment.

Note: This equipment has been tested and found to comply with the limits for a Class B digital device, pursuant to part 15 of the FCC Rules. These limits are designed to provide reasonable protection against harmful interference in a residential installation. This equipment generates, uses and can radiate radio frequency energy and, if not

installed and used in accordance with the instructions, may cause harmful interference to radio communications. However, there is no guarantee that interference will not occur in a particular installation. If this equipment does cause harmful interference to radio or television reception, which can be determined by turning the equipment off and on, the user is encouraged to try to correct the interference by one or more of the following measures:

- Reorient or relocate the receiving antenna.
- Increase the separation between the equipment and receiver.
- Connect the equipment into an outlet on a circuit different from that to which the receiver is connected.
- Consult the dealer or an experienced radio/TV technician for help.

FCC Radiation Exposure statement:


This equipment complies with FCC radiation exposure limits set forth for an uncontrolled environment. This equipment should be installed and operated with minimum distance of 20 cm between the radiator and your body. This transmitter must not be co-located or operating in conjunction with any other antenna or transmitter.

WEEE Disposal and Recycling Information

All products bearing this symbol are waste electrical and electronic equipment (WEEE as in directive 2012/19/EU) which should not be mixed with unsorted household waste. Instead, you should protect human health and the environment by handing over your waste equipment to a designated collection point for the recycling of waste electrical and electronic equipment, appointed by the government or local authorities. Correct disposal and recycling will help prevent potential negative consequences to the environment and human health. Please contact the installer or local authorities for more information about the location as well as terms and conditions of such collection points.

Website: sonoff.tech

Documents / Resources

	SONOFF M5-120 SwitchMan Push Button Switch [pdf] User Guide M5-120, M5-120 SwitchMan Push Button Switch, SwitchMan Push Button Switch, Push Button Switch, Button Switch, Switch
-------------------------------------------------------------------------------------	-----------------------------------------------------------------------------------------------------------------------------------------------------------------------------------------------------

References

- [User Manual](#)