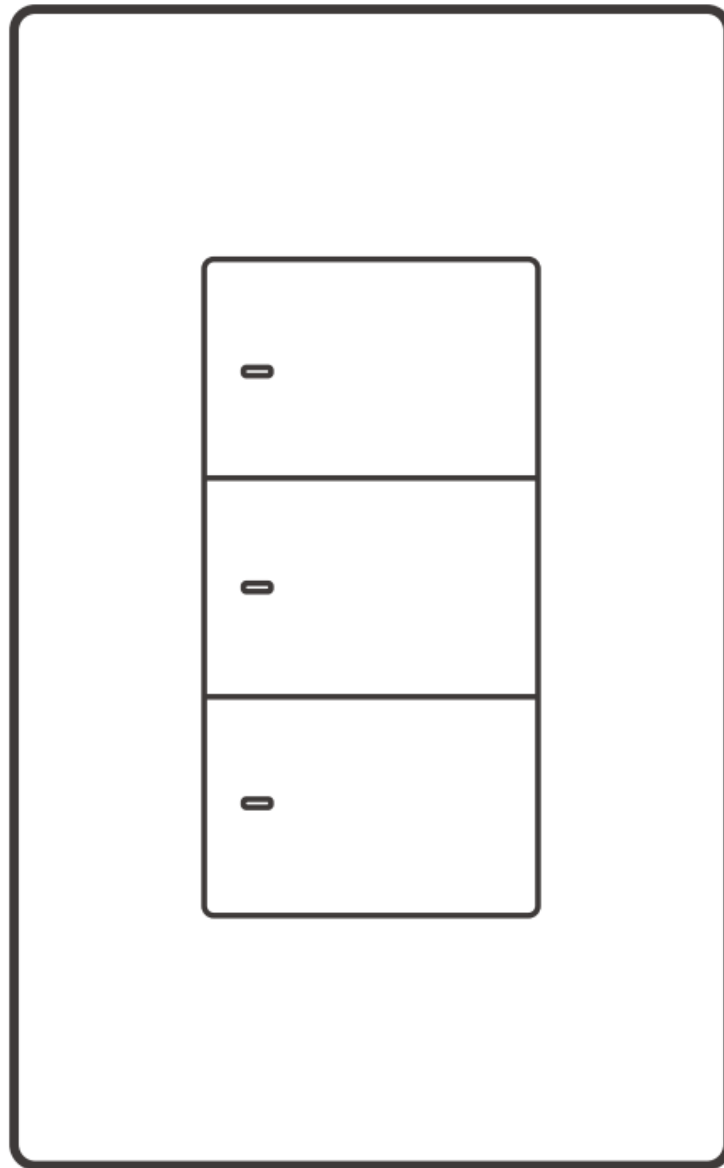


## SONOFF M5-120 Switch Man Smart Wall Switch User Guide

[Home](#) » [SonOFF](#) » SONOFF M5-120 Switch Man Smart Wall Switch User Guide 

SONOFF M5-120 Switch Man Smart Wall Switch



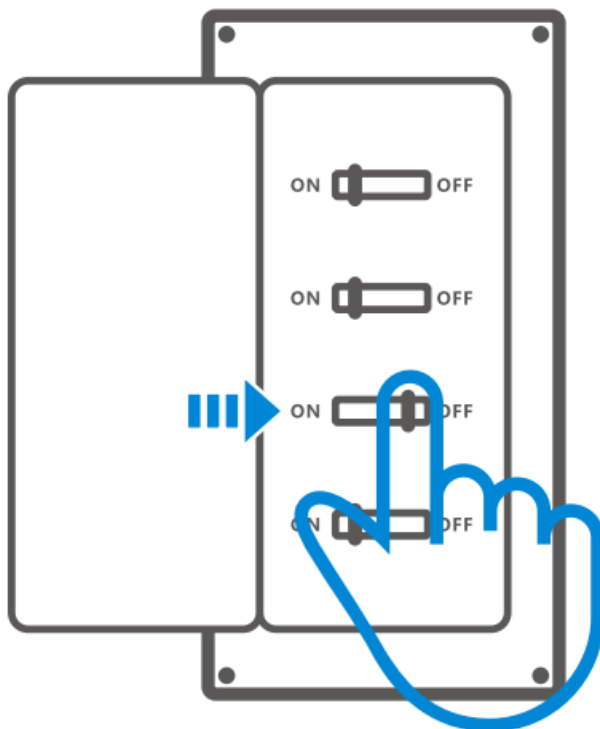
Switch Man Smart Wall Switch

## Contents

- 1 Power off
- 2 Wiring instruction
- 3 Download the eWelink App
- 4 Power on
- 5 Add device
- 6 User Manual
- 7 FCC compliance statement
- 8 FCC Radiation Exposure statement
- 9 ISED Notice
- 10 ISED Radiation Exposure Statement
- 11 SAR Warning
- 12 WEEE Warning
- 13 EU Declaration of Conformity
- 14 Customers Support
- 15 Documents / Resources
  - 15.1 References

## Power off

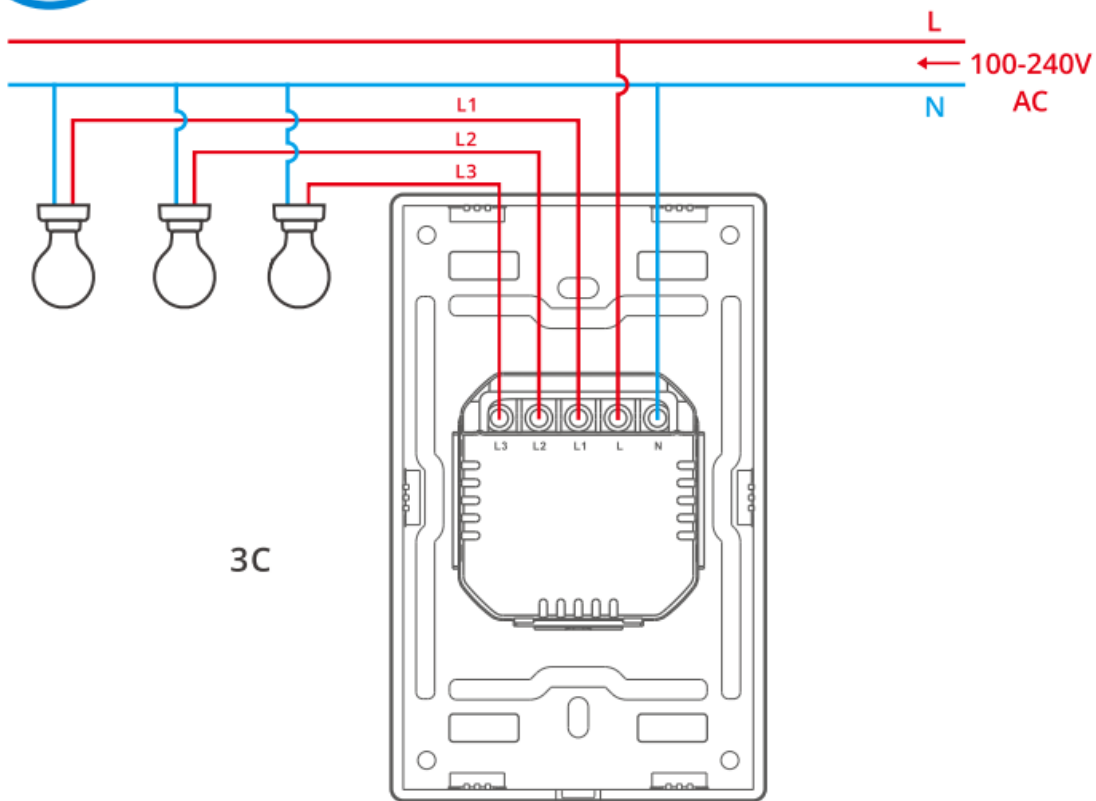
1



⚠ Please install and maintain the device by a professional electrician. To avoid electric shock hazard, do not operate any connection or contact the terminal connector while the device is powered on!




## Wiring instruction

2

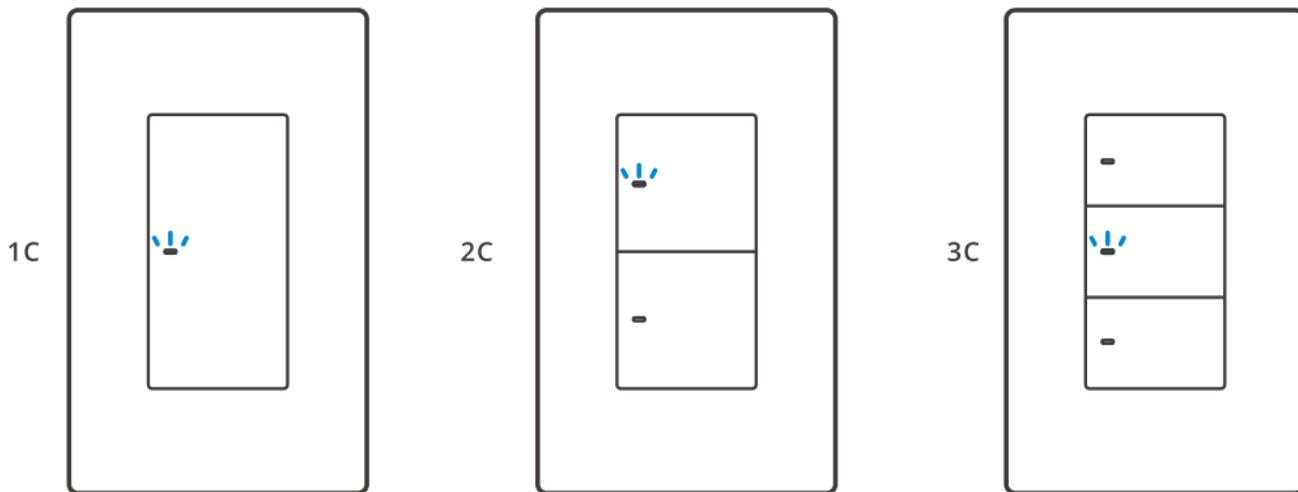


⚠ Make sure all wires are connected correctly.

**Download the eWeLink App**

<p>Q   eWeLink</p>	
	

**Power on**



After powering on, the device will enter the Pairing Mode during the first use.  
The Wi-Fi LED indicator changes in a cycle of two short and one long flash and release.

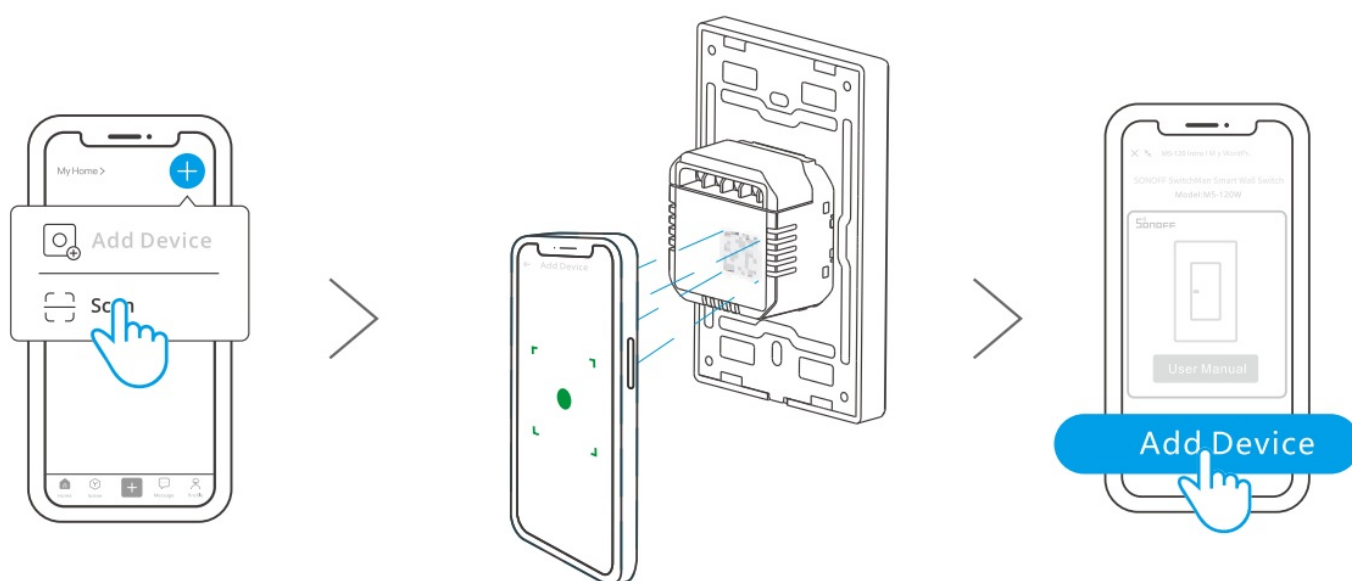
⚠ The device will exit the Pairing Mode if not paired within 10mins. If you want to enter this mode, please long press any pairing button for about 5s until the Wi-Fi LED indicator changes in a cycle of two short and one long flash and release.

## Add device

### Method 1: Matter Pairing

Open a Matter-compatible App ( e.g. Alexa App, Apple Home App, or Google Home App, etc) to scan the Matter QR code on the Quick Guide or the device itself to add the device.

### Method 2: Scan QR Code to Add Device



Open the eWelink App and scan the QR code on the device, then follow the instructions given by the app to proceed .

**Note:** If the page doesn't display after scanning the code, please power on the device and then click the '+' button in the top right corner of the eWelink App homepage. Select 'Add Device' to proceed.

## User Manual



<https://sonoff.tech/usermanuals>

Scan the QR code or visit the website to learn about the detailed user manual and help.

## FCC compliance statement

1. This device complies with part 15 of the FCC Rules. Operation is subject to the following two conditions:
  1. This device may not cause harmful interference, and
  2. This device must accept any interference received, including interference that may cause undesired operation.
2. Changes or modifications not expressly approved by the party responsible for compliance could void the user's authority to operate the equipment.

### Note:

This equipment has been tested and found to comply with the limits for a Class B digital device, pursuant to part 15 of the FCC Rules. These limits are designed to provide reasonable protection against harmful interference in a residential installation. This equipment generates, uses and can radiate radio frequency energy and, if not installed and used in accordance with the instructions, may cause harmful interference to radio communications. However, there is no guarantee that interference will not occur in a particular installation. If this equipment does cause harmful interference to radio or television reception, which can be determined by turning the equipment off and on, the user is encouraged to try to correct the interference by one or more of the following measures:

- Reorient or relocate the receiving antenna.
- Increase the separation between the equipment and receiver.
- Connect the equipment into an outlet on a circuit different from that to which the receiver is connected.
- Consult the dealer or an experienced radio/TV technician for help.

## FCC Radiation Exposure statement

This equipment complies with FCC radiation exposure limits set forth for an uncontrolled environment. This equipment should be installed and operated with minimum distance of 20 cm between the radiator and your body. This transmitter must not be co-located or operating in conjunction with any other antenna or transmitter.

## **ISED Notice**

This device contains licence-exempt transmitter(s)/receiver(s) that comply with Innovation, Science and Economic Development Canada's licence-exempt RSS(s). Operation is subject to the following two conditions:

(1) This device may not cause interference.

(2) This device must accept any interference, including interference that may cause undesired operation of the device.

This Class B digital apparatus complies with Canadian ICES-003.

This device complies with RSS-247 of Industry Canada.

Operation is subject to the condition that this device does not cause harmful interference.

## **ISED Radiation Exposure Statement**

This equipment complies with ISED radiation exposure limits set forth for an uncontrolled environment.

This equipment should be installed and operated with minimum distance of 20 cm between the radiator and your body.

This transmitter must not be co-located or operating in conjunction with any other antenna or transmitter.

## **SAR Warning**

Under normal use of condition, this equipment should be kept a separation distance of at least 20 cm between the antenna and the body of the user.

To ensure the safety of your electrical installation, it's essential either a Miniature Circuit Breaker (MCB) or a Residual Current operated Icebreaker with Integral Overcurrent protection(RCBO) with an electrical rating of 1 0A (1 C, 2C), 6A (3C) has been installed before the MS-1 C-120, MS-2C-120, MS-3C-120, MS-1 C-120W, MS-2C-120W, MS-3C-120W.

## **WEEE Warning**

WEEE Disposal and Recycling Information All products bearing this symbol are waste electrical and electronic equipment (WE EEs in directive 2012/19/EU) which should not be mixed with unsorted household waste. Instead, you should protect human health and the environment by handing over your waste equipment to a designated collection point for the recycling of waste electrical and electronic equipment, appointed by the government or local authorities. Correct disposal and recycling will help prevent potential negative consequences to the environment and human health. Please contact the installer or local authorities for more information about the location as well as terms and conditions of such collection points.

## **EU Declaration of Conformity**

Hereby, Shenzhen Sonoff Technologies Co., Ltd declares that the radio equipment type MS-1 C-120, M5-2C-120, M5-3C-120, MS-1 C-120W, M5-2C-120W, M5-3C-120W is in compliance with Directive 2014/53/EU. The full text of the EU declaration of conformity is available at the following internet address: <https://sonoff.tech/compliance/>

## **EU Operation frequency Range:**

### **Wi-Fi:**

802.11 b/g/n 2412-2472M Hz

802.11 n 40:2422-2462M Hz

BLE:2402-2480M Hz

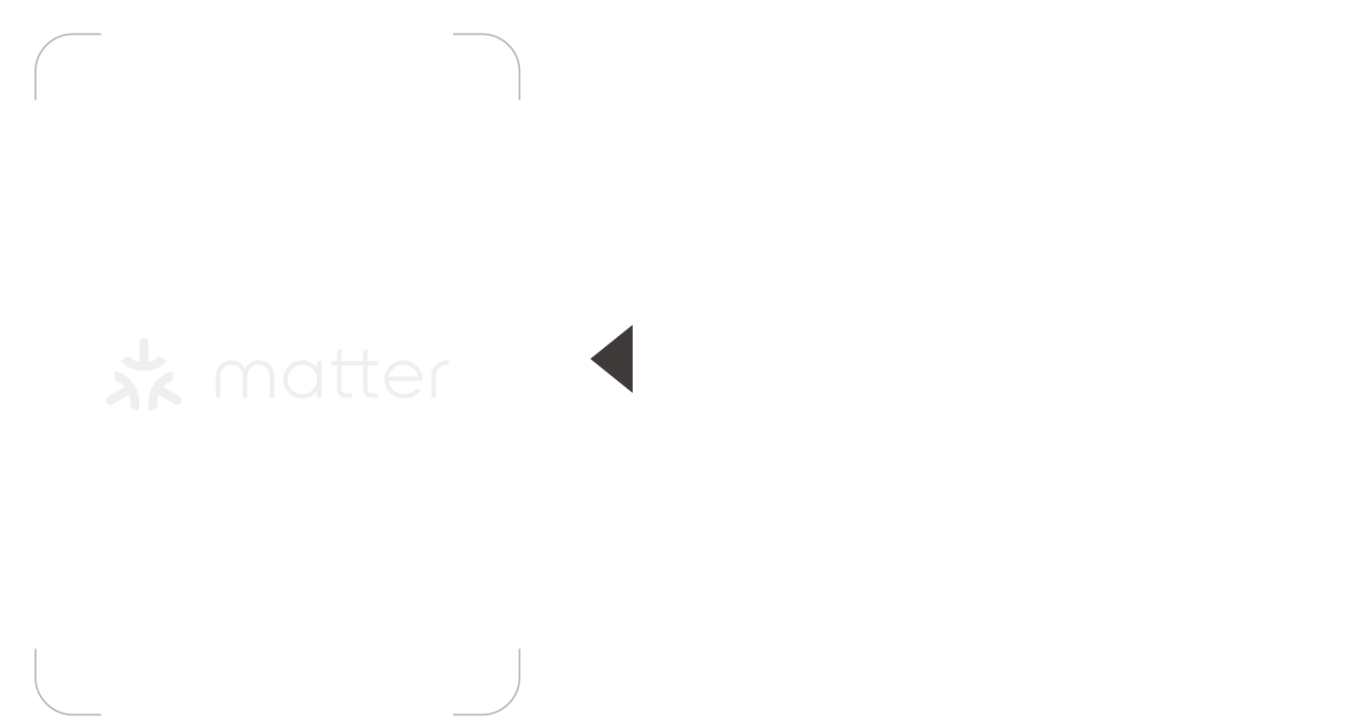
**EU RF Output Power:**

Wi-Fi 2.4G<20dBm

BLE<1 0dBm

Box	Box	Manual	Bag	Bag
PAP 20	PAP 21	PAP 22	CPE 7	LDPE 4
Carta	Carta	Carta	Plastic	Plastic
<b>WASTE SORTING</b>				
Check the provisions of your municipality. Separate the components and assign them correctly.				

**Matter QR code**



**Customers Support**




**Shenzhen Son off Technologies Co., Ltd.**  
3F & 6F, Bldg A, No. 663, Bu long Rd, Shenzhen, Guangdong, China  
ZIP code: 518000 Website: [sonoff.tech](http://sonoff.tech)  
Service email: [support@itead.cc](mailto:support@itead.cc)  
MADE IN CHINA



---

## Documents / Resources

	<a href="#">SONOFF M5-120 Switch Man Smart Wall Switch</a> [pdf] User Guide M5-120 Switch Man Smart Wall Switch, M5-120, Switch Man Smart Wall Switch, Man Smart Wall Switch, Smart Wall Switch, Wall Switch
---	---

## References

- [User Manual](#)

### Manuals+ Privacy Policy

This website is an independent publication and is neither affiliated with nor endorsed by any of the trademark owners. The "Bluetooth®" word mark and logos are registered trademarks owned by Bluetooth SIG, Inc. The "Wi-Fi®" word mark and logos are registered trademarks owned by the Wi-Fi Alliance. Any use of these marks on this website does not imply any affiliation with or endorsement.