

**SONOFF**  
SONOFF  
Integration  
Guide for  
SmartThings  
and Driver



## SONOFF Integration Guide for SmartThings and Driver Installation Guide

[Home](#) » [SonOFF](#) » SONOFF Integration Guide for SmartThings and Driver Installation Guide 

### Contents

- [1 SONOFF Integration Guide for SmartThings and Driver](#)
- [2 Product Information](#)
- [3 Product Usage Instructions](#)
- [4 Method 1: Cloud Integration](#)
- [5 Method 2: Zigbee Direct Connection](#)
- [6 Drivers URL link](#)
- [7 Documents / Resources](#)
  - [7.1 References](#)
- [8 Related Posts](#)

## SONOFF

### SONOFF Integration Guide for SmartThings and Driver



## Product Information

Sonoff Products Integration Guide for SmartThings & Driver Installation

### Specifications

- Methods: Cloud Integration, Zigbee Direct Connection
- Compatibility: SmartThings ecosystem
- Requirements: SONOFF Zigbee gateway for Zigbee products

### Product Usage Instructions

#### Method 1: Cloud Integration

If you primarily use the eWeLink App, follow these steps:

1. Visit the detailed steps for cloud integration at this [link](#).
2. If using Zigbee products, ensure you have a SONOFF Zigbee gateway.

#### Method 2: Zigbee Direct Connection

If SmartThings App is your primary platform and you have a SmartThings gateway, follow these steps:

1. Access the driver URL link provided.
2. Sign in with your Samsung account.
3. Click 'Enroll' and wait for up to a minute.
4. Click 'Available Drivers'.
5. Click 'Install'.
6. The installation of the device driver will be completed.
7. Open the SmartThings App and scan for nearby devices.

### FAQ

#### Q: What if I encounter issues during the installation process?

A: If you encounter any issues during the installation process, please refer to the troubleshooting section of the integration guide or contact SONOFF customer support for assistance.

## SONOFF Products Integration Guide for SmartThings & Driver Installation

Posted by Mia.Ma

In response to user feedback and to enhance the accessibility of our products, we're thrilled to introduce two methods for seamlessly integrating SONOFF products into the SmartThings ecosystem. These methods empower users to effortlessly integrate our products into their SmartThings ecosystems for control.

### Method 1: Cloud Integration

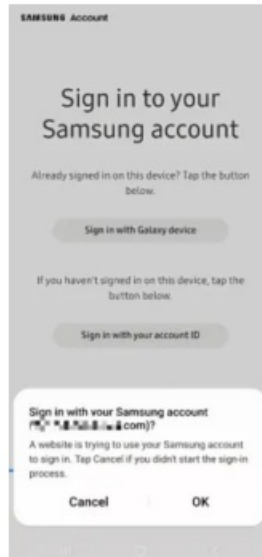
For users who primarily use the eWeLink App, we recommend considering this method first. If you're using Zigbee products, please note that you'll require a SONOFF Zigbee gateway (such as ZBBridge-P or NSPanel Pro). Detailed steps for cloud integration can be found here: <https://ewelink.cc/ewelink-works-with-smarthings/>

### Method 2: Zigbee Direct Connection

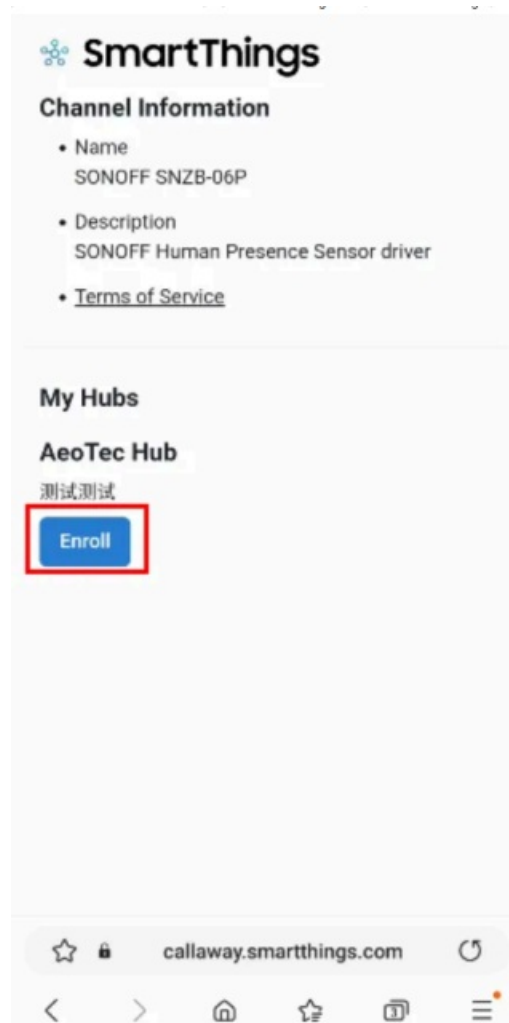
If the SmartThings App is your primary platform and you already have a SmartThings gateway, you can choose this method. We've provided links to the drivers necessary for integrating SONOFF Zigbee products with the SmartThings gateway at the end of this article.

## Installation steps

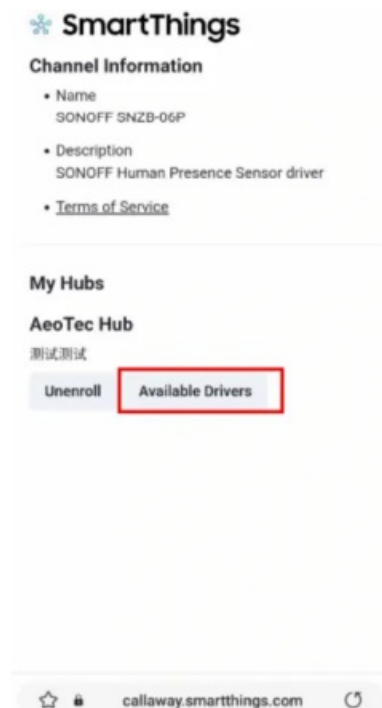
1. Access the Driver URL link.
2. Sign in with your Samsung account.
3. Click 'Enroll', it may take up to a minute.



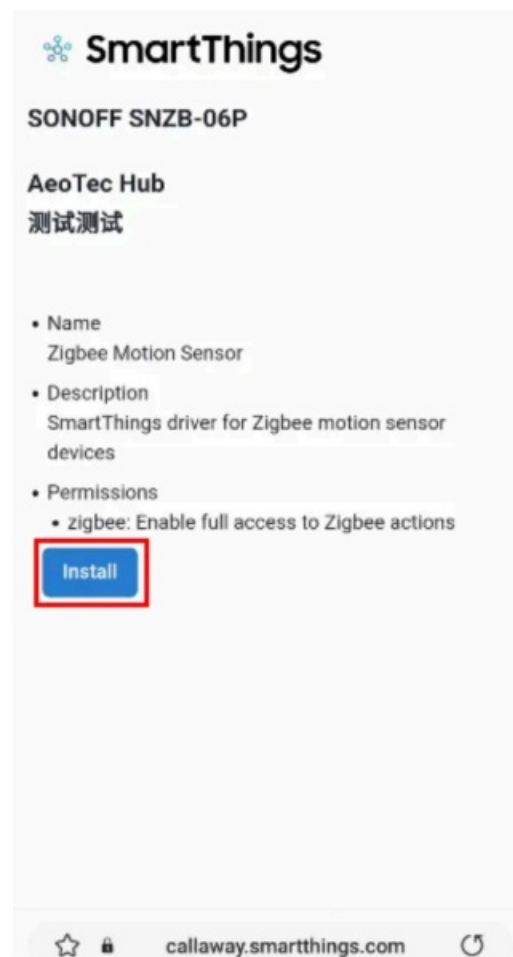
4. Click 'Available Drivers'



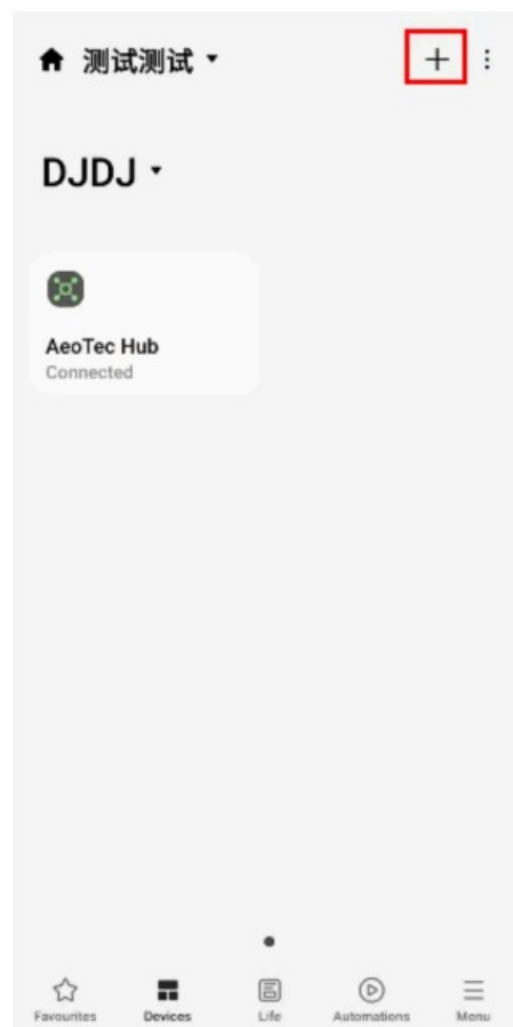
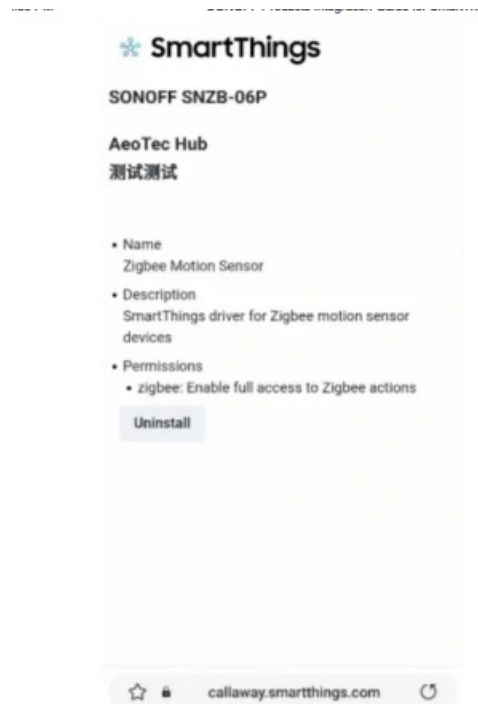
5. Click 'Install'



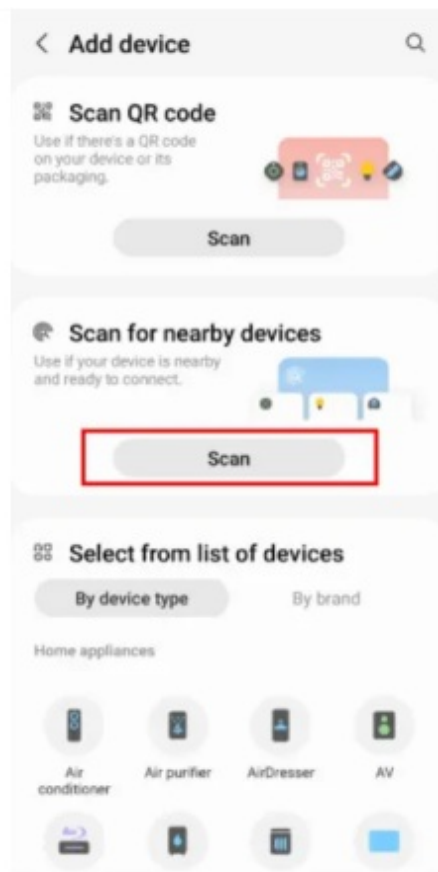
6. Now the installation of the device driver has been completed.



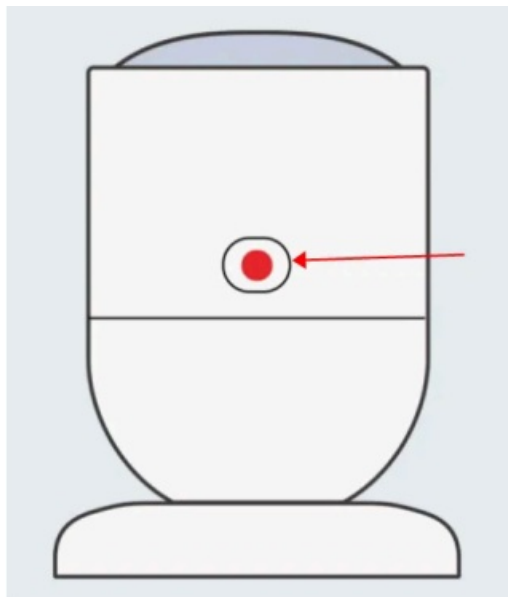
7. Open the SmartThings App, and scan for nearby devices.

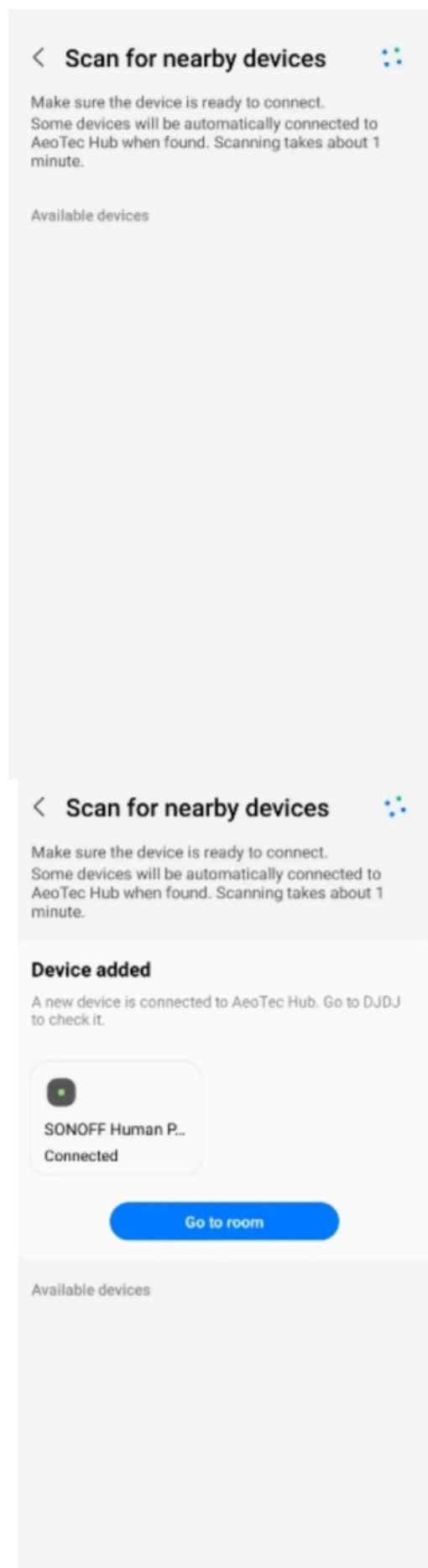


8. Then long press the device's pairing button for 5 sec to enter pairing mode.



9. Please wait until the device addition process is complete.





## Drivers URL link

- Other unmentioned Zigbee products can be directly connected to the SmartThings gateway without the need for driver installation.

- For new products or new features, we will continue to update the table below.

Product	Driver URL	Features
TRV ZB	<a href="https://bestow-regional.api.smarthings.com/invite/gpjGAnZJoX24">https://bestow-regional.api.smarthings.com/invite/gpjGAnZJoX24</a>	<ul style="list-style-type: none"> <li>•Device Mode</li> <li>•Current Temperature</li> <li>•Temperature Setting</li> <li>•Heating State</li> <li>•Battery State</li> </ul>
SNZ B-03P	<a href="https://bestow-regional.api.smarthings.com/invite/eGM6BWpJKeMA">https://bestow-regional.api.smarthings.com/invite/eGM6BWpJKeMA</a>	<ul style="list-style-type: none"> <li>•Motion Detection</li> <li>•Battery State</li> <li>•Detection Duration</li> <li>•Illuminance (Bright &amp; Dim)</li> </ul>
SNZ B-04P	<a href="https://bestow-regional.api.smarthings.com/invite/kVln78mBBj49">https://bestow-regional.api.smarthings.com/invite/kVln78mBBj49</a>	<ul style="list-style-type: none"> <li>•Open &amp; Close Detection</li> <li>•Battery State</li> <li>•Tamper-proof State</li> </ul>
SNZ B-05P	coming soon...	
SNZ B-06P	<a href="https://bestow-regional.api.smarthings.com/invite/eGM6BWpJKeMA">https://bestow-regional.api.smarthings.com/invite/eGM6BWpJKeMA</a>	<ul style="list-style-type: none"> <li>•Motion Detection (Appear as a motion sensor but retains the functionality of a human presence sensor)</li> <li>•Detection Duration</li> <li>•Detection Sensitivity</li> <li>•Illuminance (Bright &amp; Dim)</li> </ul>

- BRAND eWeLink
- Nextion Airspy
- COMPANY
- Authors Contact Us
- Explore Become A Distributor



SUPPORT

- Support
- User Manuals
- Where To Buy
- Developers

Subscribe

Get the latest news from SONOFF


Email

ings-driver-installation/

Subscribe

Copyright © 2024 SONOFF All Rights Reserved

Documents / Resources

	<a href="#">SONOFF Integration Guide for SmartThings and Driver</a> [pdf] Installation Guide ZBBridge-P, NSPanel Pro, Integration Guide for SmartThings and Driver, Guide for SmartThings and Driver, SmartThings and Driver, Driver
---	--

References

- [VK.com | VK](#)
- [Samsung account](#)
- [User Manual](#)

[Manuals+](#), [Privacy Policy](#)

This website is an independent publication and is neither affiliated with nor endorsed by any of the trademark owners. The "Bluetooth®" word mark and logos are registered trademarks owned by Bluetooth SIG, Inc. The "Wi-Fi®" word mark and logos are registered trademarks owned by the Wi-Fi Alliance. Any use of these marks on this website does not imply any affiliation with or endorsement.