



SONOFF iFan04 WiFi Ceiling Fan User Guide

[Home](#) » [SonOFF](#) » SONOFF iFan04 WiFi Ceiling Fan User Guide 

Contents

- [1 SONOFF iFan04 WiFi Ceiling Fan](#)
- [2 Equipment Installation](#)
- [3 FCC RULES](#)
- [4 Documents / Resources](#)
 - [4.1 References](#)
- [5 Related Posts](#)

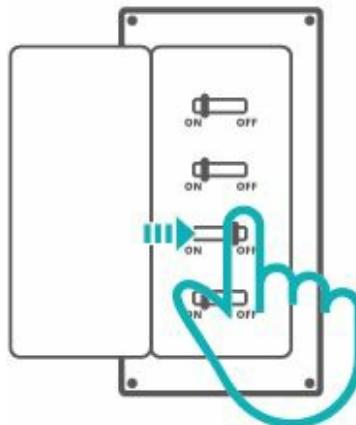


SONOFF iFan04 WiFi Ceiling Fan

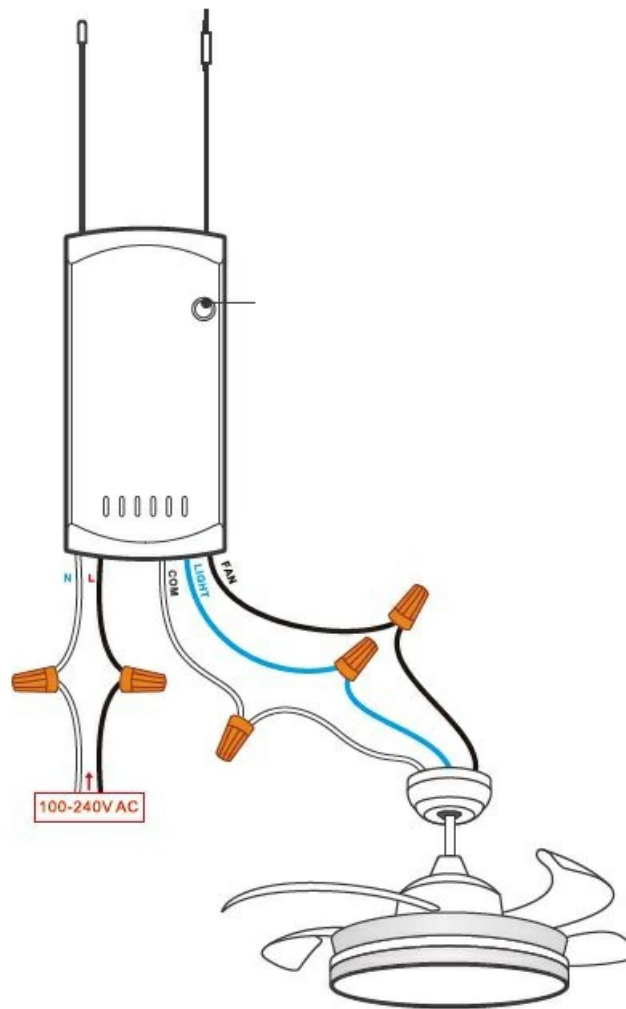


POWER OFF

Please install and maintain the device by a professional electrician. To avoid electric shock hazard, do not operate any connection or contact the terminal connector while the device is power on

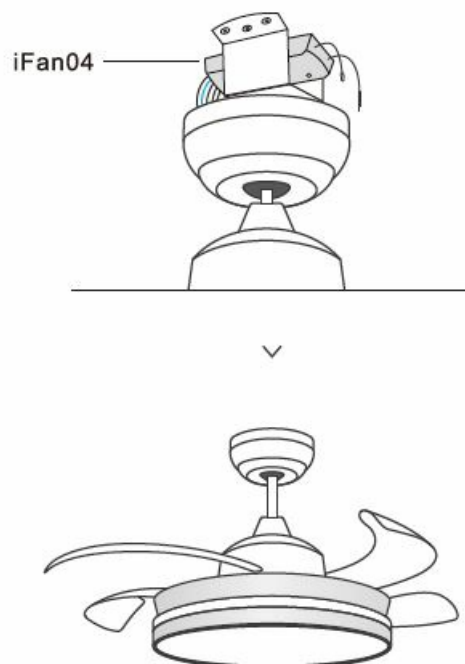


Wiring instruction



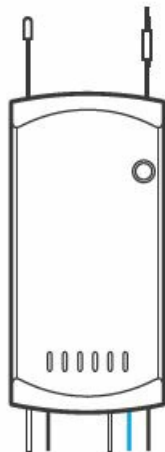
- Pairing button / On/Off light
- Please install protection devices before connecting the live wire. (e.g. fuses or air switches).
- Make sure all wires are connected correctly.

Equipment Installation



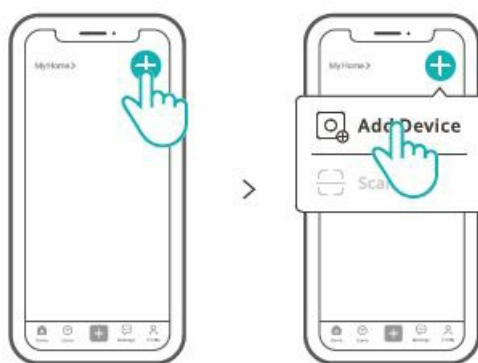
• Download the eWeLink App

Power on



- After powering on, the device will enter the pairing mode during the first use, then the fan makes two short beeps and one long beep.
- If not paired within 3 mins, the device will exit the pairing mode. If you need enter again, long press the “pairing button” on the controller or Wi-Fi pairing button” on the RM433R2 remote controller and hold 5s until the fan makes two short and one long “beep” sound and release.

Add device



- Tap “+” and select “Add Device”, then operate following the prompt on the App
- Pairing method for the device and SONOFF RM433R2 remote

- Please press any button within 5s after powering on again until the ceiling fan makes a sound “beep”, and the

pairing is successful. If you do not appreciate it within 5s please power it on again

User Manual



- <https://www.sonoff.tech/ust>
- Scan the QR code or visit the website to learn about the detailed user manual and help.

FCC RULES

This device complies with part 15 of the FCC Rules. Operation is subject to the following two conditions:

- This device may not cause harmful interference, and
- This device must accept any interference received, including interference that may cause undesired operation.
- Changes or modifications not expressly approved by the party responsible for compliance could void the user's authority to operate the equipment.

Note: This equipment has been tested and found to comply with the limits for a Class B digital device, pursuant to part 15 of the FCC Rules. These limits are designed to provide reasonable protection against harmful interference in a residential installation. This equipment generates, uses and can radiate radio frequency energy and, if not installed and used in accordance with the instructions, may cause harmful interference to radio communications. However, there is no guarantee that interference will not occur in a particular installation. If this equipment does cause harmful interference to radio or television reception, which can be determined by turning the equipment off and on, the user is encouraged to try to correct the interference by one or more of the following measures:

- Reorient or relocate the receiving antenna.
- Increase the separation between the equipment and receiver.
- Connect the equipment into an outlet on a circuit different from that to which the receiver is connected.
- -Consult the dealer or an experienced radio/TV technician for help.

FCC Radiation Exposure statement:

This equipment complies with FCC radiation exposure limits set forth for an uncontrolled environment.

This equipment should be installed and operated with minimum distance of 20 cm between the radiator and your body. This transmitter must not be co-located or operating in conjunction with any other antenna or transmitter.

ISED Notice

This device contains licence-exempt transmitter(s)/receiver(s) that comply with Innovation, Science and Economic Development Canada's licence-exempt RSS(s). Operation is subject to the following two conditions:

- This device may not cause interference.
- This device must accept any interference, including interference that may cause undesired operation of the device.

This Class B digital apparatus complies with Canadian ICES-003(B). This device complies with RSS-247 of Industry Canada. Operation is subject to the condition that this device does not cause harmful interference.

SAR Warning Under normal use of condition, this equipment should be kept a separation distance of at least 20 cm between the antenna and the body of the user.

EU Declaration of Conformity

Hereby, Shenzhen Sonoff Technologies Co., Ltd. declares that the radio equipment type iFan04-L, iFan04-H, RM433R2 is in compliance with Directive 2014/53/EU. The full text of the EU declaration of conformity is available at the following internet

address: <https://sonoff.tech/compliance/>

WARNING

Do not ingest battery, Chemical Burn Hazard. This product contains a coin / button cell battery. If the coin / button cell battery is swallowed, it can cause severe internal burns in just 2 hours and can lead to death. Keep new and used batteries away from children. If the battery compartment does not close securely, stop using the product and keep it away from children. If you think batteries might have been swallowed or placed inside any part of the body, seek immediate medical attention. Do not replace a battery with an incorrect type. Disposal of a battery into fire or a hot oven, or mechanically crushing or cutting of a battery, that can result in an explosion. Leaving a battery in an extremely high temperature surrounding environment that can result in an explosion or the leakage of flammable liquid or gas. A battery subjected to extremely low air pressure that may result in an explosion or the leakage of flammable liquid or gas.

For CE Frequency

EU Operating Frequency Range

Wi-Fi: 802.11 b/g/n20 2412-2472 MHz

433.92MHz (Receive Only) | 433.92MHz(RM433R2 Remote Controller)

EU Output Power

Wi-Fi 2.4G≤20dBm 433.92MHzs10dBm(RM433R2 Remote Controller)

WEEE Disposal and Recycling Information All products bearing this symbol are waste electrical and electronic equipment (WEEE as in directive 2012/19/EU) which should not be mixed with unsorted household waste. Instead, you should protect human health and the environment by handing over your waste equipment to a designated collection point for the recycling of waste electrical and electronic equipment, appointed by the government or local authorities. Correct disposal and recycling will help prevent potential negative consequences to the environment and human health. Please contact the installer or local authorities for more information about the location as well as terms and conditions of such collection points. To ensure the safety of your electrical installation, it's essential either a Miniature Circuit Breaker (MCB) or a Residual Current Operated Circuit Breaker (RCBO) with an electrical rating of SA has been installed before the


Shenzhen Sonoff Technologies Co., Ltd. 1001, BLDG8, Lianhua Industrial Park, shenzhen, GD, China

ZIP code: 518000

Website: sonoff.tech

Service email: support@itead.cc MADE IN CHINA

Documents / Resources

	<p>SONOFF iFan04 WiFi Ceiling Fan [pdf] User Guide iFan04, iFan04 WiFi Ceiling Fan, WiFi Ceiling Fan, Ceiling Fan, Fan</p>
---	---

References

- [User Manual](#)

