



[Home](#) » [SonOFF](#) » **SONOFF DW2-Wi-Fi WiFi Door Window Sensor User Guide** 

Contents [[hide](#)]

- [1 SONOFF DW2-Wi-Fi WiFi Door Window Sensor](#)
- [2 Download the eWeLink App](#)
- [3 Install batteries](#)
- [4 Installation](#)
- [5 Enter pairing mode](#)
- [6 Add Device](#)
- [7 User Manual](#)
- [8 FCC compliance statement](#)
- [9 For CE Frequency](#)
- [10 WEEE Disposal and Recycling Information](#)
- [11 Documents / Resources](#)
 - [11.1 References](#)



SONOFF DW2-Wi-Fi WiFi Door Window Sensor



Wi-Fi Wireless Door/Window Sensor

Download the eWeLink App

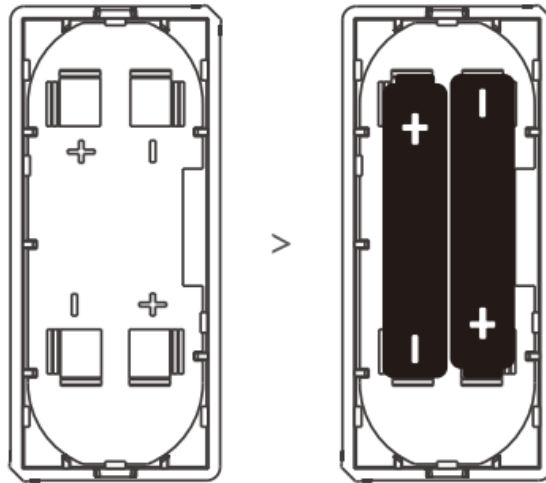


Install batteries

The battery is not included; please purchase it separately.



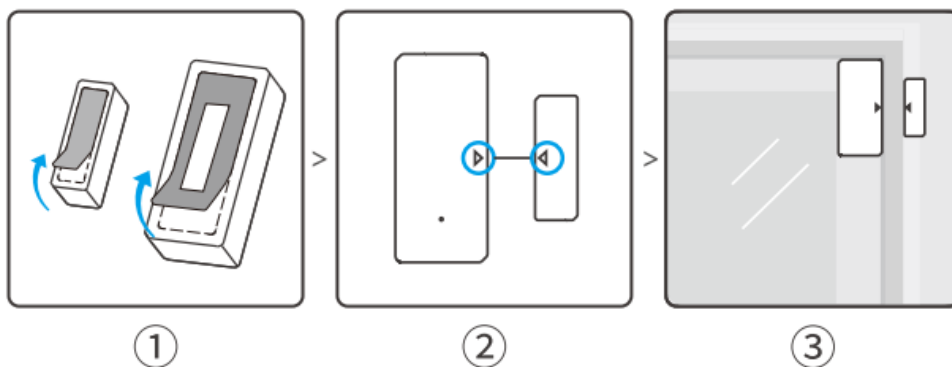
Remove the back cover of the transmitter.



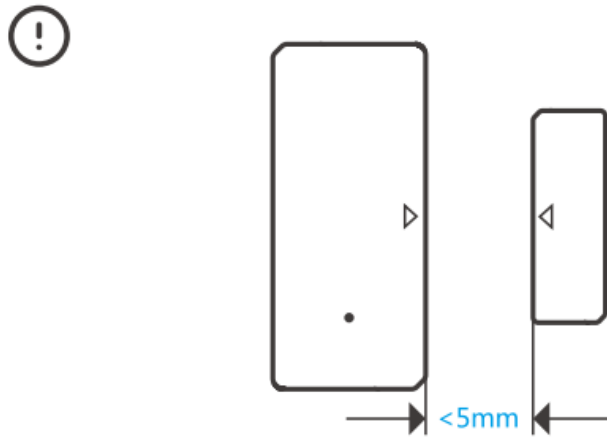
Insert batteries into the battery compartment based on the identifiers of positive and negative poles.

Close the back cover.

Installation

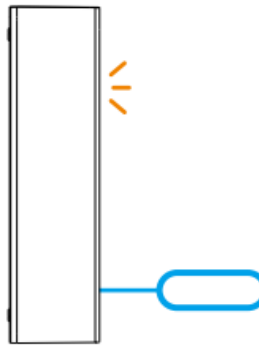


1. Tear off the protective film of the 3M adhesive.
2. Try to align the mark line on the magnet with that on the transmitter during installation.
3. Install them in the opening and closing area separately (such as windows).



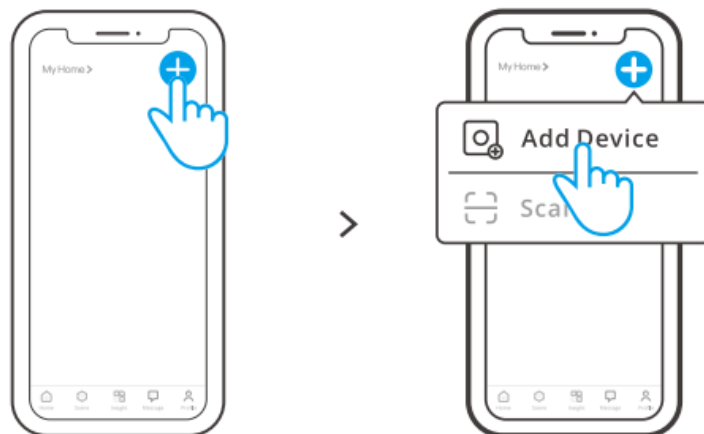
Make sure the installation gap is less than 5mm when the door or the window is closed

Enter pairing mode



Long press the pairing button on the transmitter for 5s with the eject pin until the LED indicator flashes, then the device enters the pairing mode.

Add Device



Tap “+” and select “Add Device”, then operate following the promot on the App.

It's required to turn on the Bluetooth on your Phone when adding a device.

User Manual



<https://sonoff.tech/usermanuals>

Scan the QR code or visit the website to learn about the detailed user manual and help.

FCC compliance statement

1. This device complies with part 15 of the FCC Rules. Operation is subject to the following two conditions: (1) This device may not cause harmful interference, and (2) This device must accept any interference received, including interference that may cause undesired operation.
2. Changes or modifications not expressly approved by the party responsible for compliance could void the user's authority to operate the equipment.

Note: This equipment has been tested and found to comply with the limits for a Class B digital device, pursuant to part 15 of the FCC Rules. These limits are designed to provide reasonable protection against harmful interference in a residential installation. This equipment generates, uses and can radiate radio frequency energy and, if not installed and used in accordance with the instructions, may cause harmful interference to radio communications. However, there is no guarantee that interference will not occur in a particular installation. If this equipment does cause harmful interference to radio or television reception, which can be determined by turning the equipment off and on, the user is encouraged to try to correct the interference by one or more of the following measures:

- Reorient or relocate the receiving antenna.

- Increase the separation between the equipment and receiver.
- Connect the equipment into an outlet on a circuit different from that to which the receiver is connected.
- Consult the dealer or an experienced radio/TV technician for help.

FCC Radiation Exposure statement:

This equipment complies with FCC radiation exposure limits set forth for an uncontrolled environment. This equipment should be installed and operated with a minimum distance of 20 cm between the radiator and your body. This transmitter must not be co-located or operating in conjunction with any other antenna or transmitter.

For CE Frequency



EU Operating Frequency Range

Wi-Fi: 802.11 b: 2400M – 2483.5M

BLE: 2402-2480 MHz

EU Output Power

BLEs10dBm

WEEE Disposal and Recycling Information



■ All products bearing this symbol are waste electrical and electronic equipment (WEEE as in Directive 2012/19/EU) which should not be mixed with unsorted household waste. Instead, you should protect human health and the environment by handing over your waste equipment to a designated collection point for the recycling of waste electrical and electronic equipment, appointed by the government or local authorities. Correct disposal and recycling will help prevent potential negative consequences to the

environment and human health. Please contact the installer or local authorities for more information about the location as well as the terms and conditions of such collection points.



Warning

Under normal use of condition, this equipment should be kept a separation distance of at least 20 cm between the antenna and the body of the user. Dans des conditions normales d'utilisation, cet équipement doit être maintenu à une distance d'au moins 20 cm entre l'antenne et le corps de l'utilisateur.

EU Declaration of Conformity

Hereby, Shenzhen Sonoff Technologies Co., Ltd. declares that the radio equipment type DW2-Wi-Fi is in compliance with Directive 2014/53/EU. The full text of the EU declaration of conformity is available at the following internet address:

<https://sonoff.tech/compliance/>

Scatola PAP 21

Manuale PAP 22

Carta Carta

RACCOLTA



- Do not ingest battery. Chemical Burn Hazard.
- Keep new and used batteries away from children.
- If the battery compartment does not close securely, stop using the product and keep it away from children. If you think batteries might have been swallowed or placed inside any part of the body, seek immediate medical attention.
- Do not replace a battery with an incorrect type.
- Disposal of a battery into fire or a hot oven, or mechanically crushing or cutting of a battery, can result in an explosion.
- Leaving a battery in an extremely high temperature environment can result in an explosion or the leakage of flammable liquid or gas.

- A battery subjected to extremely low air pressure may result in an explosion or the leakage of flammable liquid or gas.
- Do not short-circuit batteries.
- Do not use new and old batteries together.
- Do not use batteries of different types/manufacturers together.
- Do not use batteries in reverse polarity.

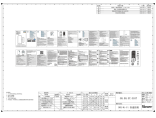
The equipment is only suitable for mounting at heights < 2 m.

WARNING

1. This product is not a toy and not intended for use by children. For adult use only.
2. The appliance is suitable for moderate climates only.
3. The ventilation must not be impaired by covering the appliance with items such as newspapers, table cloths, curtains, etc.
4. Naked flame sources, such as candles, must not be placed on the appliance.



Documents / Resources



[SONOFF DW2-Wi-Fi WiFi Door Window Sensor \[pdf\]](#) User Guide

DW2-Wi-Fi WiFi Door Window Sensor, DW2-Wi-Fi, WiFi Door Window Sensor, Door Window Sensor, Window Sensor, Sensor

References

- [User Manual](#)

📁 SonOFF

🔑 Door & Window Sensor, DW2-Wi-Fi, DW2-Wi-Fi WiFi Door Window Sensor, Sensor, SonOFF, Wifi Door Window Sensor, Window Sensor

Leave a comment

Your email address will not be published. Required fields are marked *

Comment *

Name

Email

Website

☐ Save my name, email, and website in this browser for the next time I comment.

Post Comment

Search:

e.g. whirlpool wrf535swhz

Search

[Manuals+](#) | [Upload](#) | [Deep Search](#) | [Privacy Policy](#) | [@manuals.plus](#) | [YouTube](#)

This website is an independent publication and is neither affiliated with nor endorsed by any of the trademark owners. The "Bluetooth®" word mark and logos are registered trademarks owned by Bluetooth SIG, Inc. The "Wi-Fi®" word mark and logos are registered trademarks owned by the Wi-Fi Alliance. Any use of these marks on this website does not imply any affiliation with or endorsement.