

# SONOFF DW2-Wi-Fi Smart Home WiFi Wireless Door/Window Motion Sensor User Manual

[Home](#) » [SonOFF](#) » SONOFF DW2-Wi-Fi Smart Home WiFi Wireless Door/Window Motion Sensor User Manual

## Contents [ [hide](#) ]

- 1 [SONOFF DW2-Wi-Fi Smart Home WiFi Wireless Door/Window Motion Sensor](#)
- 2 [Operation instruction](#)
  - 2.1 [Install batteries](#)
- 3 [Install the device](#)
- 4 [Specifications](#)
- 5 [Product Introduction](#)
- 6 [LED indicator status instruction](#)
- 7 [Features](#)
- 8 [Application](#)
  - 8.1 [Replace batteries](#)
- 9 [Documents / Resources](#)
- 10 [Related Posts](#)



**SONOFF DW2-Wi-Fi Smart Home WiFi Wireless Door/Window Motion Sensor**



## Operation instruction

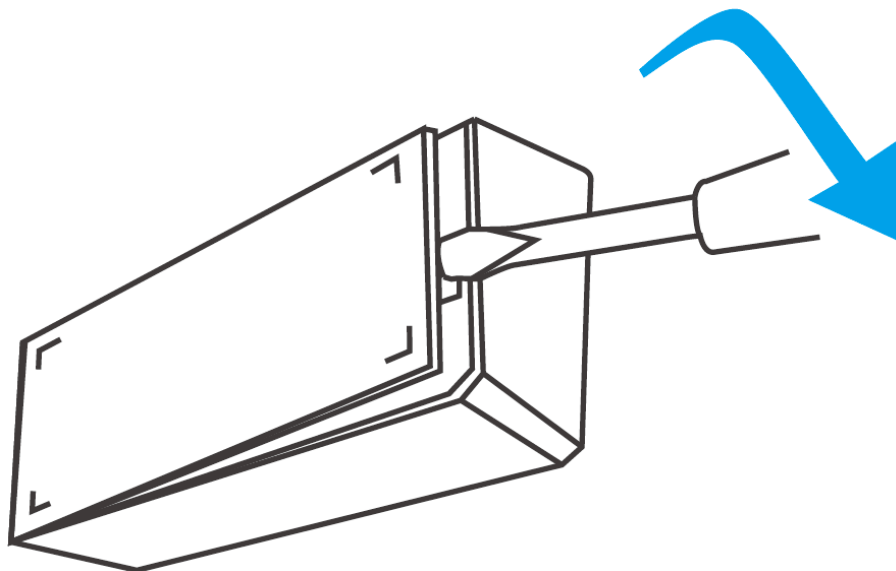
Download the “eWeLink”APP



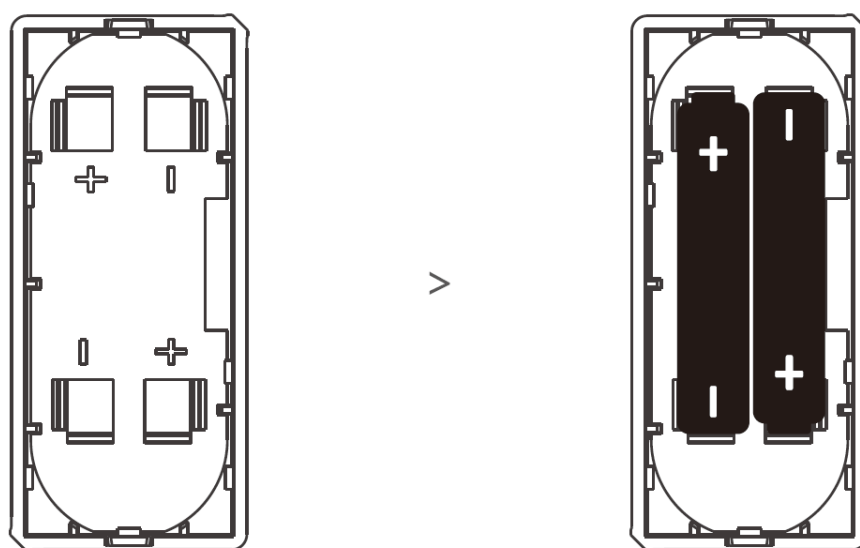
Android™ & iOS

## Install batteries

1. Remove the back cover of the transmitter.



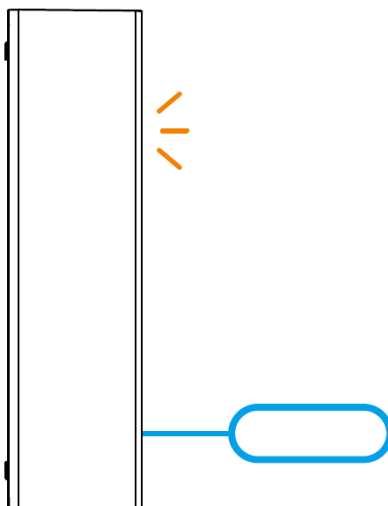
2. Insert batteries into the battery compartment based on identifiers of positive and negative poles.



3. Close the back cover.

The battery is not included, please purchase it separately.

### Enter pairing mode



Long press the pairing button on the transmitter for 5s with the eject pin until the LED indicator flashes, then the device enters the pairing mode.

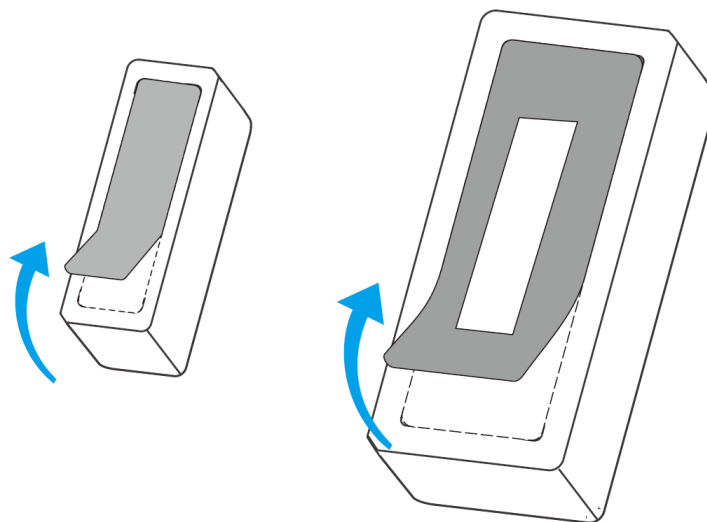
## Add the device



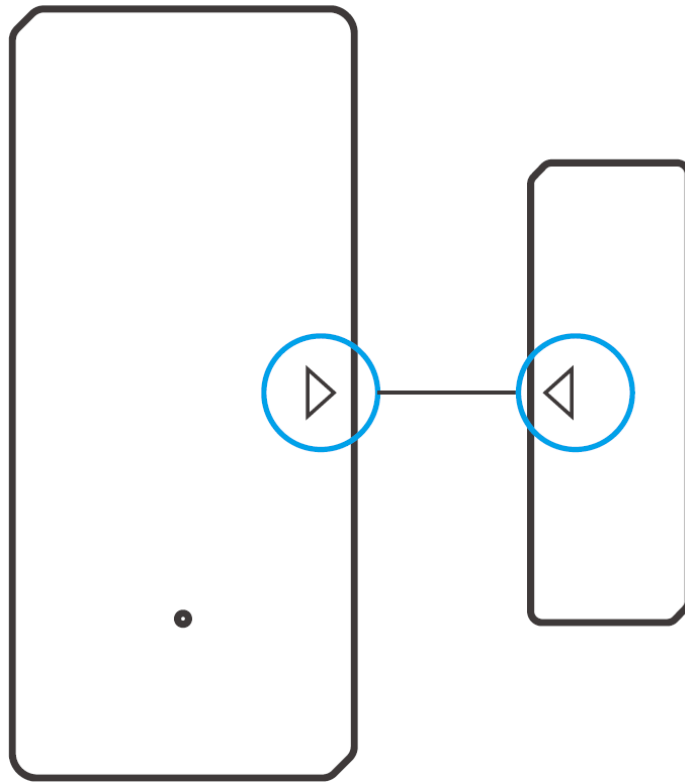
Tap “+” and select “Bluetooth connect”, then operate following the prompt on the APP.

## Install the device

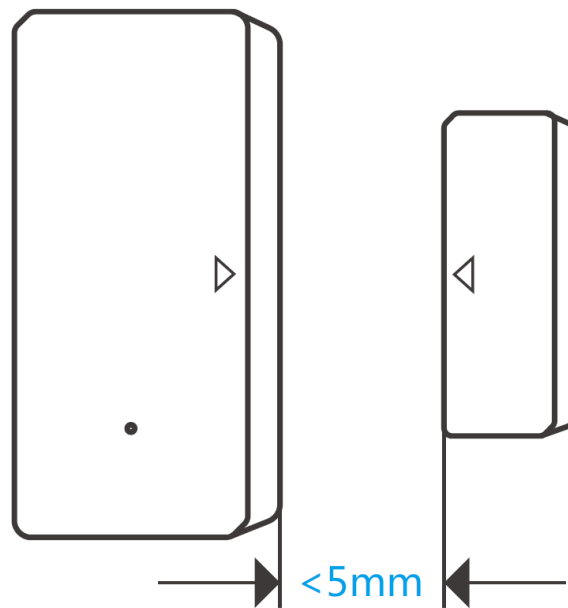
1. Tear off the protective film of the 3M adhesive.



2. Try to align the mark line on the magnet with that on the transmitter during installation.



3. Install them in the opening and closing area separately.

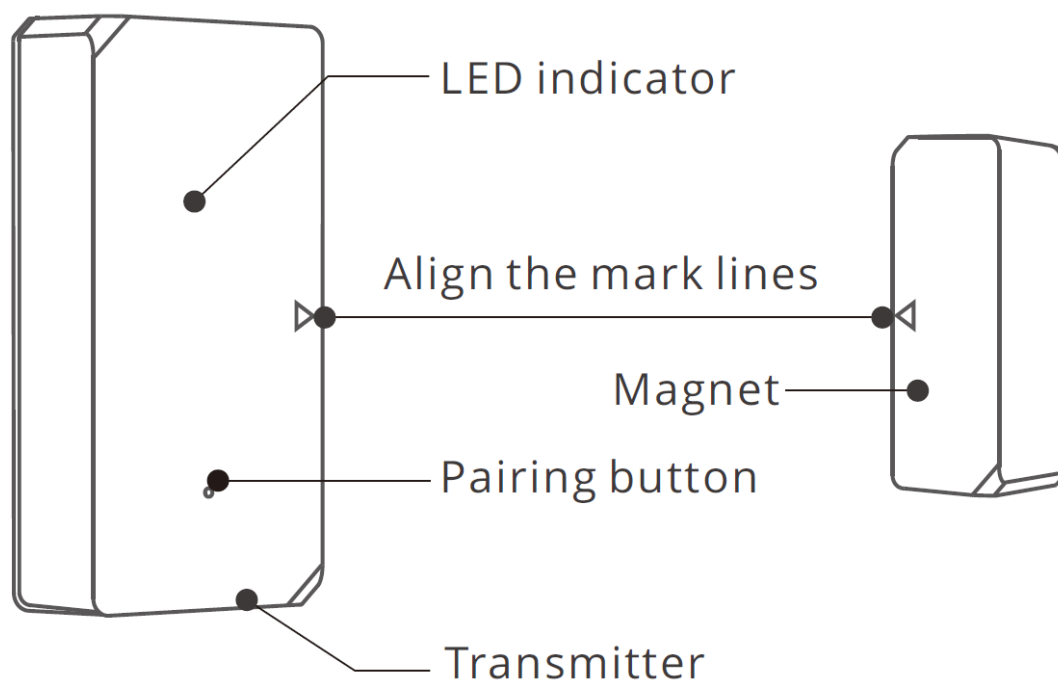


Make sure the installation gap is less than 5mm when the door or the window is closed.

## Specifications

Model	DW2-Wi-Fi
Battery model	AAA 1.5V
Working voltage	DC3V (2 x 1.5V battery)
Quiescent current	≤40uA
Emission current	≤15mA
Wi-Fi	IEEE 802.11 b 2.4GHz
Operating systems	Android & iOS
Installation gap	<5mm
Working temperature	-10°C~40°C
Material	PC
Dimension	Transmitter: 70x31x19mm    Magnet: 42x14x16mm

## Product Introduction



The device weight is less than 1 kg.

The installation height of less than 2 m is recommended.

## LED indicator status instruction

Flashes	Bluetooth Pairing Mode
Flashes quickly once	Unable to discover the router
Flashes quickly twice	Connect to the router but fail to connect to Wi-Fi

## Features

DW2-Wi-Fi is a Wi-Fi wireless door/window transmitter which triggers the transmitter by separating the magnet for more than 20mm from the transmitter, then the transmitter will send an alarm message and pushes it to APP. You can share the device with your family to check the door/window status together.



Share Control



Alarm push  
notification

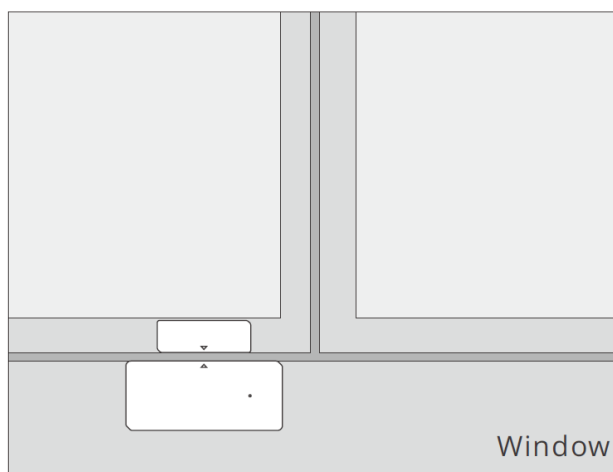
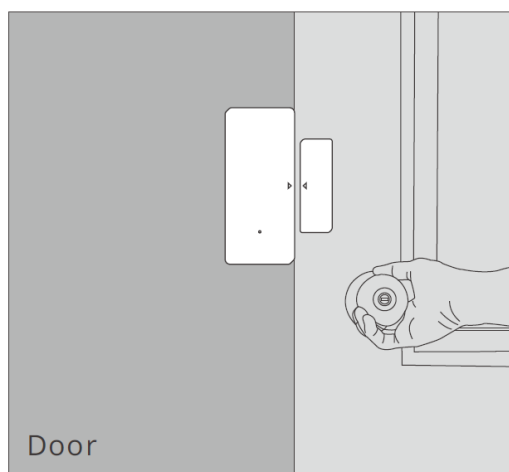


Historical operation  
records



Battery level

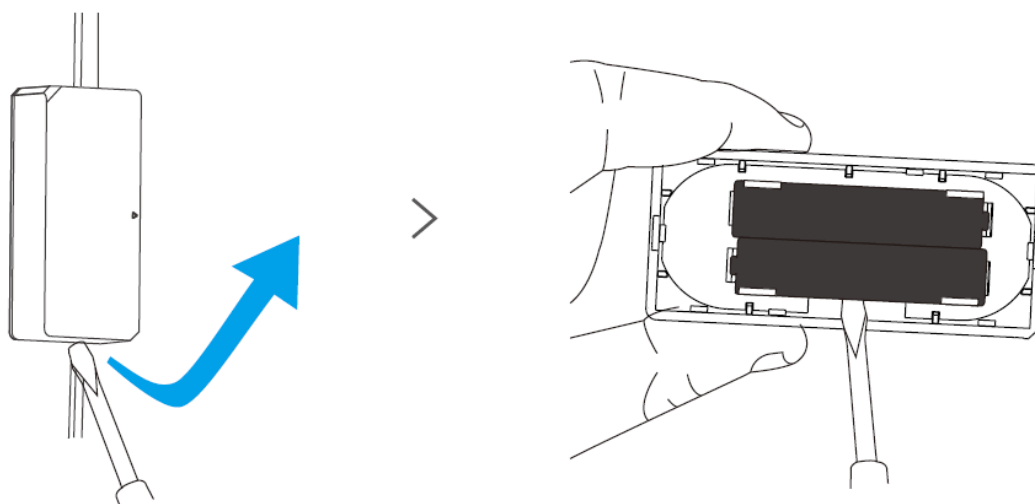
## Application



### Note:

- Do not install outside the door/window.
- Do not install in the unstable position or in the place exposed to rain or moisture.
- Do not install near wiring or magnetic object.

### Replace batteries



Hereby, Shenzhen Sonoff Technologies Co., Ltd. declares that the radio equipment type DW2-Wi-Fi is in

compliance with Directive 2014/53/EU. The full text of the EU declaration of conformity is available at the following internet address: <https://sonoff.tech/usermanuals>

**TX Frequency:**

WiFi: 2412-2472MHz

**RX Frequency:**

**WiFi:**

2412-2472MHz

**BLE Frequency:**

2402-2480MHz

### WiFi Output Power:

12.62dBm(802.11b)

**BLE Output Power:**

1.9dBm/MHZ

Shenzhen Sonoff Technologies Co., Ltd.  
1001, BLDG8, Lianhua Industrial Park, shenzhen, GD, China  
ZIP code: 518000 Website: [sonoff.tech](http://sonoff.tech)  
MADE IN CHINA

## Documents / Resources

