



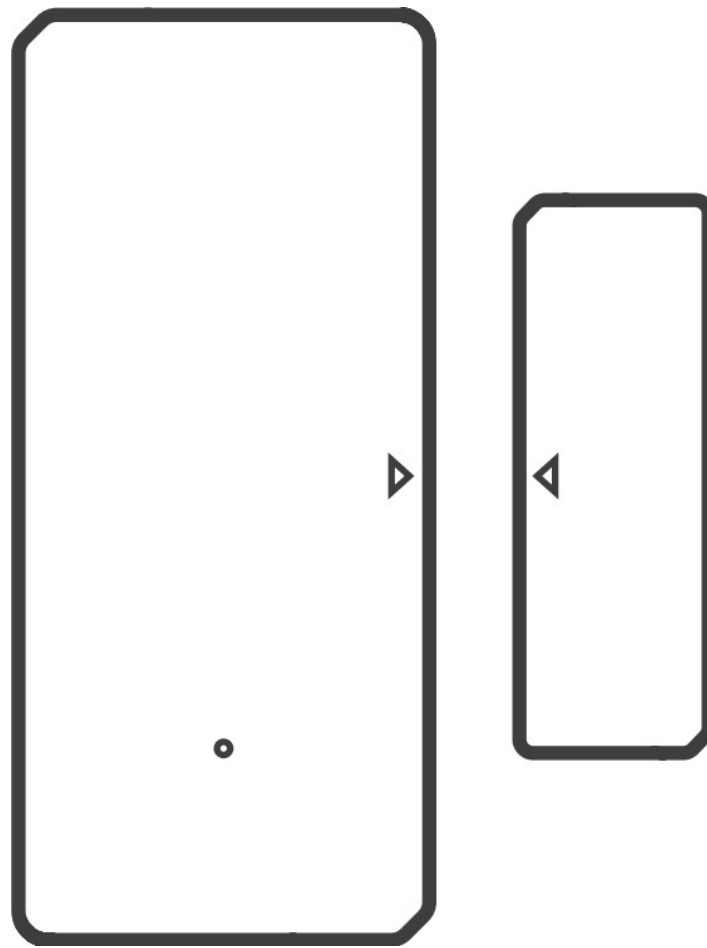
# Sonoff DW2-RF RF Wireless Door-Window Sensor User Manual

[Home](#) » [SonOFF](#) » Sonoff DW2-RF RF Wireless Door-Window Sensor User Manual 



DW2-RF  
User manual V1.1





**RF Wireless Door/Window Sensor**

The device can be operated intelligently via working with the SONOFF 433MHz RF Bridge to communicate with other devices.

The device can work with other gateways supporting 433MHz wireless protocol.

Detailed information is in accordance with the final product.

## **Contents**

- [1 Operation instruction](#)
- [2 Install the device](#)
- [3 Specifications](#)
- [4 Product Introduction](#)
- [5 Features](#)
- [6 Application](#)
- [7 Replace batteries](#)
- [8 Documents / Resources](#)

## **Operation instruction**

**Download APP**

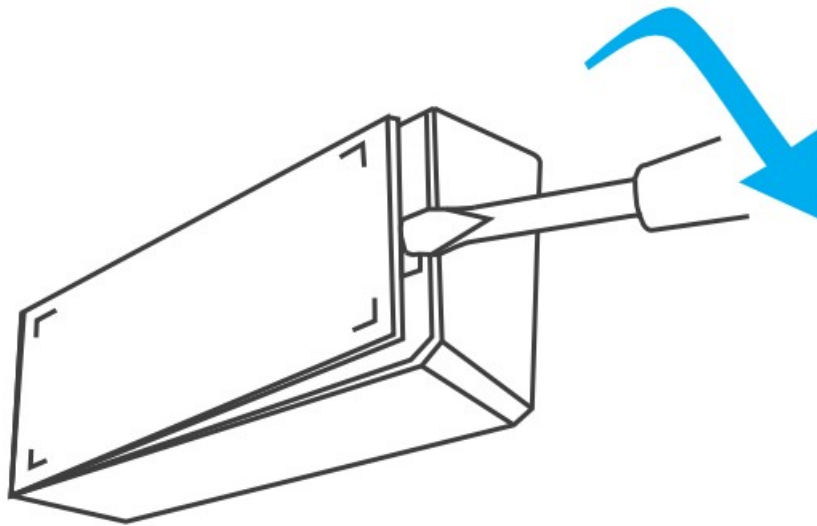


Android™ & iOS

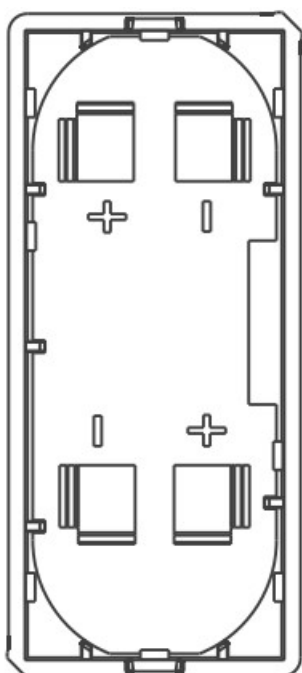
<http://app.coolkit.cc/dl.html>

## 2. Install batteries

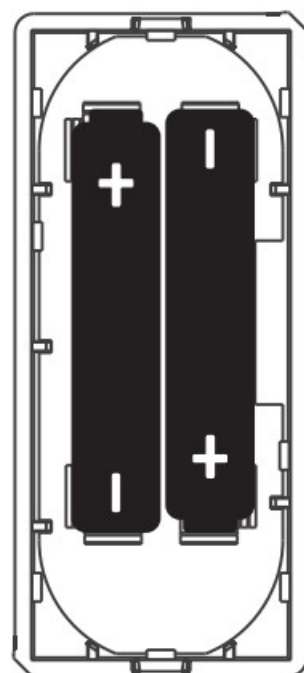
2-1. Remove the back cover of the transmitter.



2-2. Insert batteries into the battery compartment based on identifiers of positive and negative poles.



>

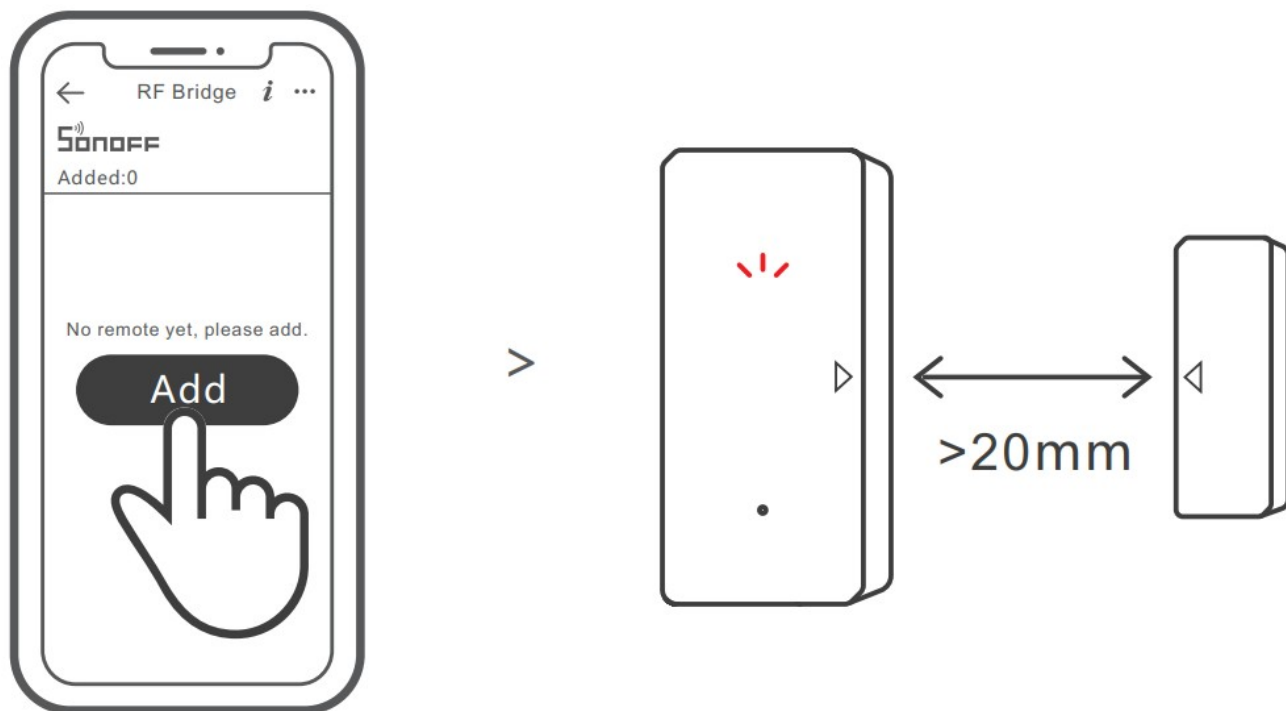


2-3. Close the back cover.

The battery is not included, please purchase it separately.

### 3. Add sub-devices

Connect the Bridge before adding the sub-device.

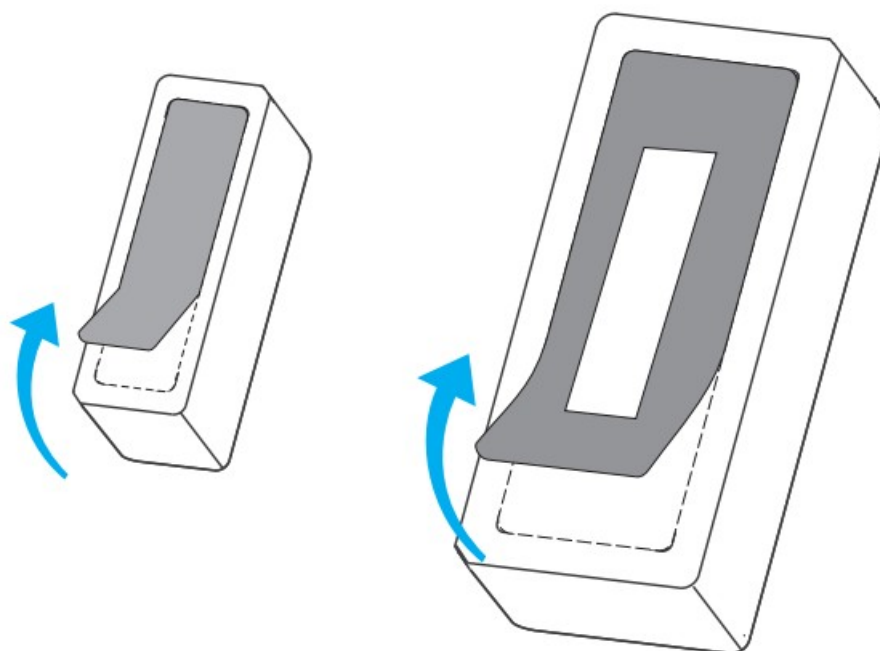


Access the ewe Link APP and select the Bridge, tap “Add” to select the alarm, and a “Beep” means the Bridge enters the pairing mode. Then separate the magnet for more than 20 mm from the transmitter until the LED indicator stays on for 1 to 2s, and the pairing is complete when you hear “Beep Beep”.

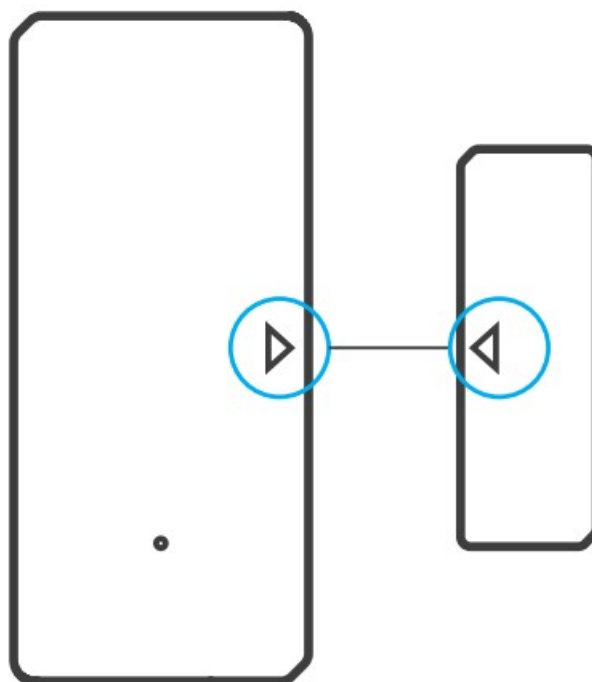
If the addition failed, move the sub-device closer to the Bridge and try again.

### Install the device

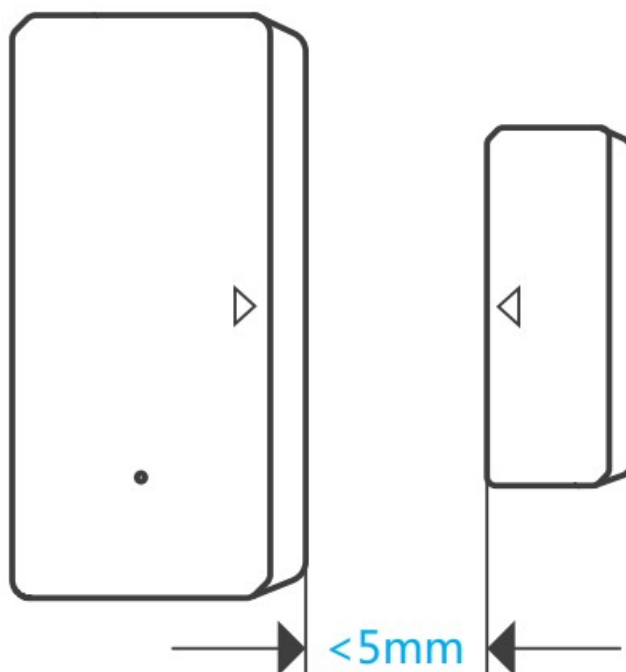
1. Tear off the protective film of the 3M adhesive.



2. Try to align the mark line on the magnet with that on the transmitter during installation.



3. Install them in the opening and closing area separately.

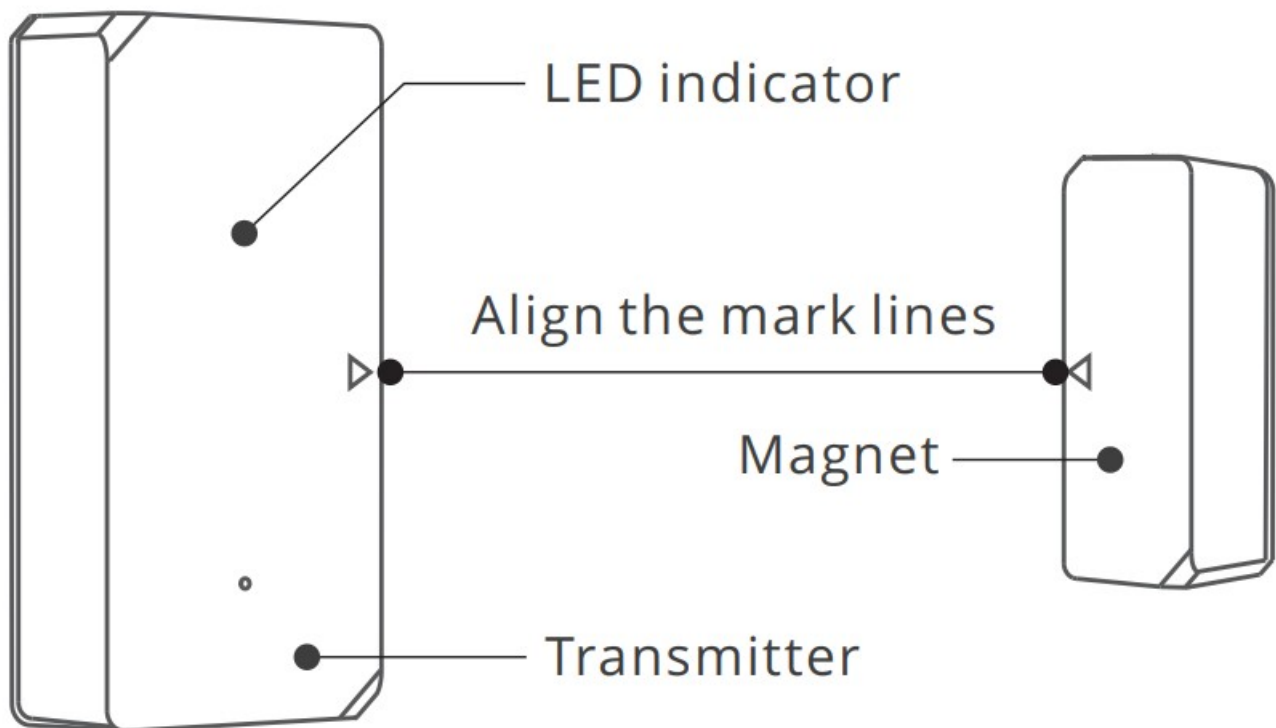


Make sure the installation gap is less than 5mm when the door or the window is closed.

### Specifications

|                                |   |
|--------------------------------|---|
| Model                          | DW2-RF  |
| RF                             | 433MHz  |
| Working voltage                | DC3V (2 x 1.5V battery)                       |
| Battery model                  | AAA 1.5V                                      |
| Quiescent current              | ≤6uA  |
| Emission current               | ≤10mA   |
| Wireless transmission distance | Max. 50m                                      |
| Installation gap               | <5mm  |
| Working temperature            | -10°C~40°C                                    |
| Material                       | PC  |
| Dimension                      | Transmitter: 70x31x19mm    Magnet: 42x14x16mm |

## Product Introduction



The device weight is less than 1 kg.  
The installation height of less than 2 m is recommended.

## Features

DW2-RF is a low-energy wireless door/window sensor that makes you know the opening status of door and window by separating the magnet from the transmitter.  
Connect it with the Bridge and you can create a smart scene to trigger other devices.



Low-energy

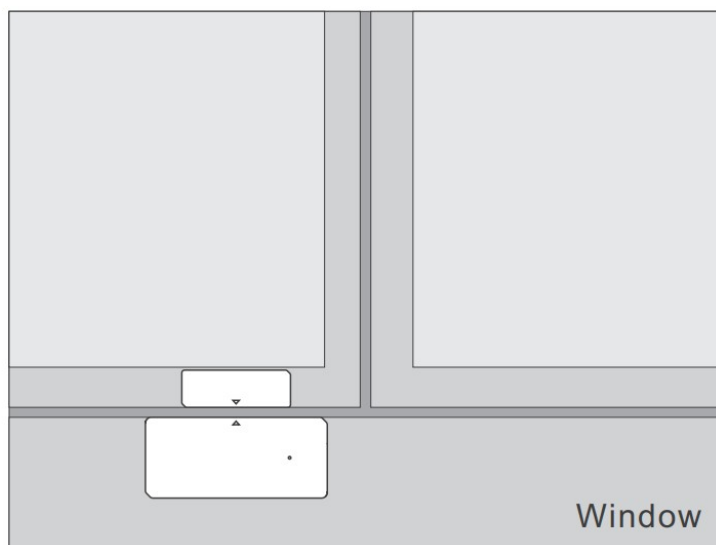
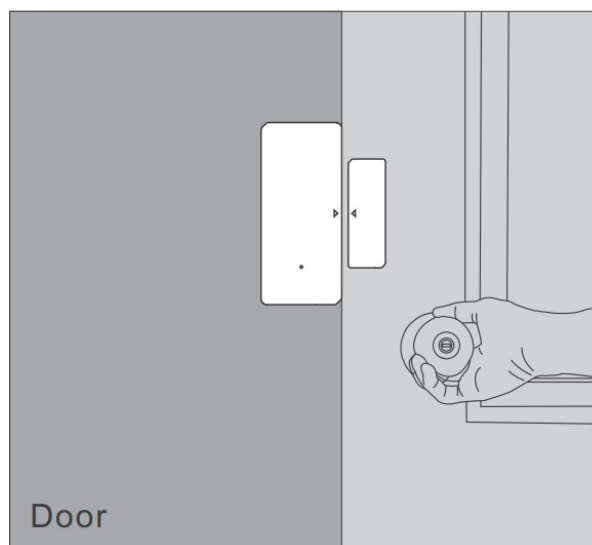


Alarm recordings check



Smart scene

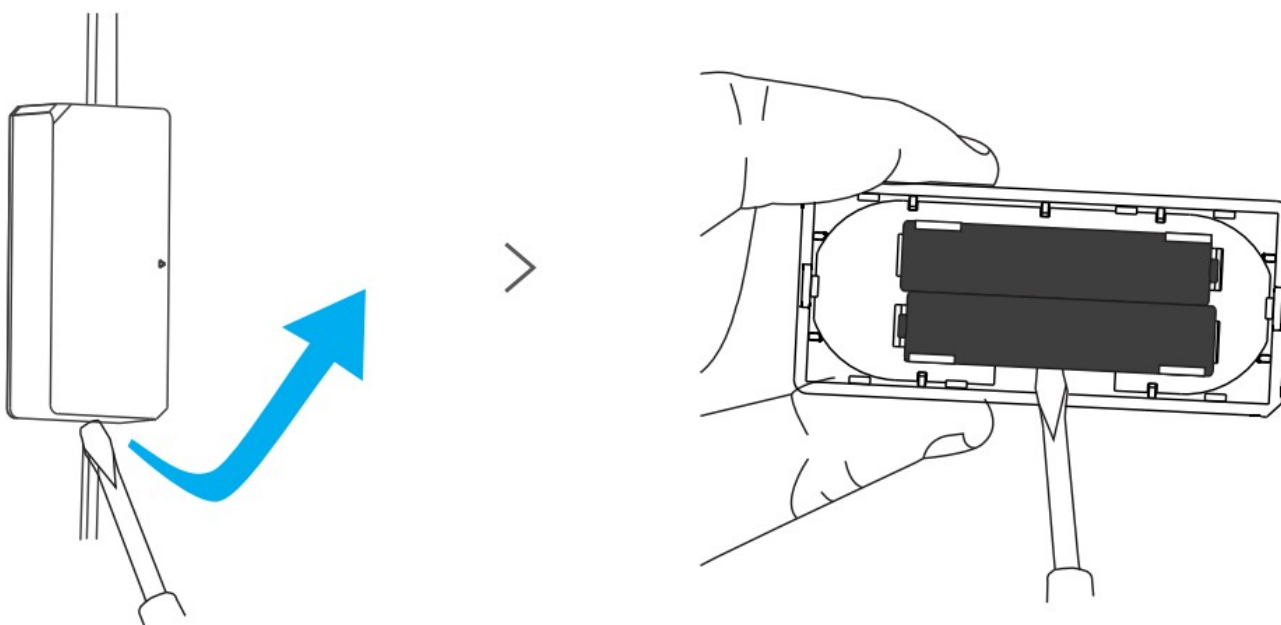
### Application



### Note:

- Do not install outside the door/window.
- Do not install in the unstable position or in the place exposed to rain or moisture.
- Do not install near wiring or magnetic object.

### Replace batteries



Hereby, Shenzhen Sonoff Technologies Co., Ltd. declares that the radio equipment type DW2-RF is in


compliance with Directive 2014/53/EU. The full text of the EU declaration of conformity is available at the following internet address: <https://sonoff.tech/usermanuals>



Shenzhen Sonoff Technologies Co., Ltd.  
1001, BLDG8, Jianhua Industrial Park, Shenzhen, GD, China  
ZIP code: 518000 Website: [sonoff.tech](https://sonoff.tech)  
MADE IN CHINA



Documents / Resources

|  |  |
|--|--|
|  | <p><a href="#">Sonoff DW2-RF RF Wireless Door-Window Sensor</a> [pdf] User Manual<br/>DW2-RF RF Wireless Door-Window Sensor, DW2-RF, RF Wireless Door-Window Sensor, Wirel<br/>ess Door-Window Sensor, Door-Window Sensor, Window Sensor, Sensor</p> |
|--|--|

[Manuals+.](#)