

SONOFF DW2-RF 433MHZ RF Wireless Door-Window Sensor User Guide

[Home](#) » [SonOFF](#) » SONOFF DW2-RF 433MHZ RF Wireless Door-Window Sensor User Guide 

Contents

- [1 SONOFF DW2-RF 433MHZ RF Wireless Door-Window Sensor](#)
- [2 Quick User Guide](#)
- [3 Download APP](#)
- [4 Install batteries](#)
- [5 Add sub-devices](#)
- [6 User Manual](#)
- [7 FCC Warning](#)
 - [7.1 FCC Radiation Exposure Statement](#)
- [8 Documents / Resources](#)
- [9 Related Posts](#)

SONOFF

SONOFF DW2-RF 433MHZ RF Wireless Door-Window Sensor



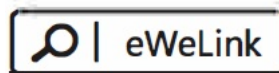
Quick User Guide

RF Wireless Door/Window Sensor

The device can be operated intelligently via working with the SONOFF 433MHz RF Bridge to communicate with other devices

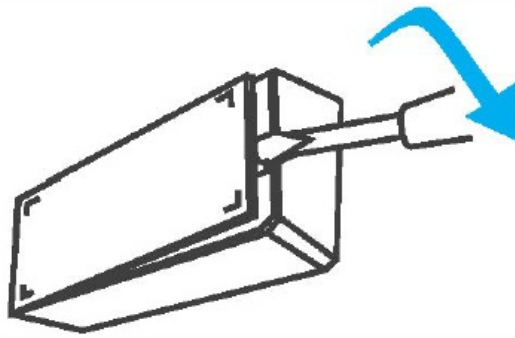
The device can work with other gateways supporting 433MHz wireless protocol. Detailed information is in accordance with the final product.

Download APP

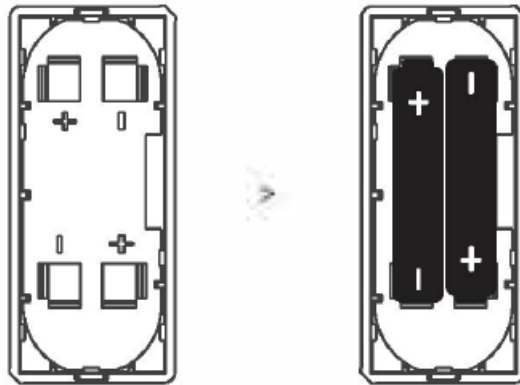


Install batteries

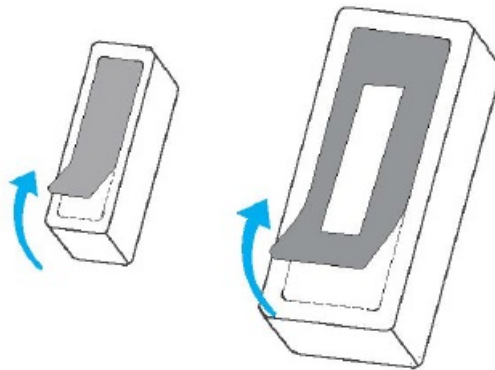
- The battery is not included, please purchase it separately.



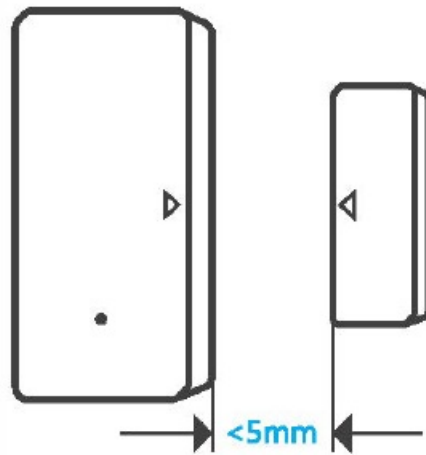
- Remove the back cover of the transmitter



- Insert batteries into the battery compartment based on identifiers of positive and negative poles..
- Close the back cover.



- Tear off the protective film of the 3M adhesive.



- Try to align the mark line on the magnet with that on the transmitter during installation

LIKE IT!

Glad to know you are satisfied with SONOFF products.
It would mean a lot to us if you can take a minute to share your buying experience.

Share it on Amazon
 Share it with your friends and family

Share it on your social media

Get the latest news by following us:

**New arrival
Promotion
How-to videos**

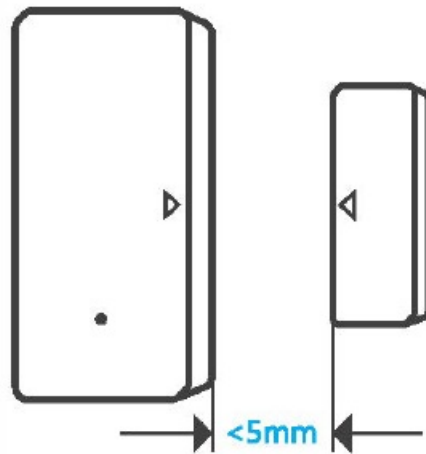
HAVE A PROBLEM?

We are so sorry for the inconvenience caused by the product.
Please contact us for help via the email address below.

support@itead.cc

We will get back to you as soon as possible.

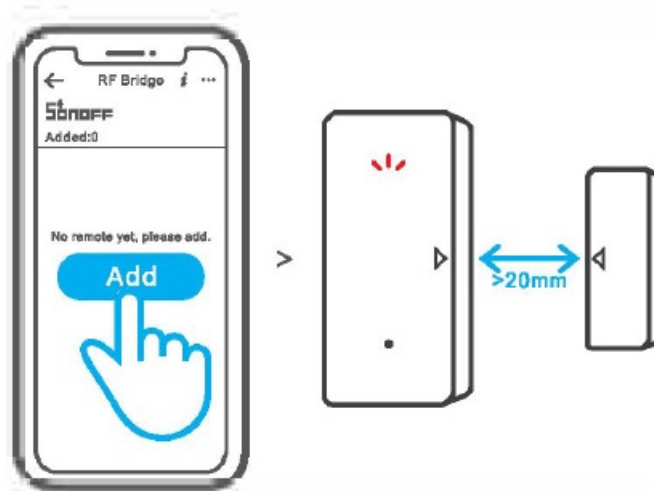
- Install them in the opening and closing area separately.



- Make sure the installation gap is less than 5mm when the door or the window is closed.

Add sub-devices

- Connect the Bridge before adding the sub-device



Access the eWeLinkAPP and select the Bridge, tap “Add” to select the alarm, and a “Beep” means the Bridge enters the pairing mode. Then separate the magnet for more than 20 mm from the transmitter until the LED indicator stays on for 1 to 2s, and the pairing is complete when you hear “Beep Beep”.

User Manual



<https://sonoff.tech/usermanuals>

- Scan the QR code or visit the website to learn about the detailed user manual and help

FCC Warning

Changes or modifications not expressly approved by the party responsible for compliance could void the user's authority to operate the equipment.

This device complies with part 15 of the FCC Rules. Operation is subject to the following two conditions:

1. This device may not cause harmful interference, and
2. This device must accept any interference received, including interference that may cause undesired operation.

FCC Radiation Exposure Statement

This equipment complies with FCC radiation exposure limits set forth for an uncontrolled environment. This equipment should be installed and operated with minimum distance 20cm between the radiator & your body. This transmitter must not be co-located or operating in conjunction with any other antenna or transmitter.

Note:

This equipment has been tested and found to comply with the limits for a Class B digital device, pursuant to part 15 of the FCC Rules. These limits are designed to provide reasonable protection against harmful interference in a residential installation. This equipment generates, uses and can radiate radio frequency energy and, if not installed and used in accordance with the instructions, may cause harmful interference to radio communications. However, there is no guarantee that interference will not occur in a particular installation. If this equipment does cause harmful interference to radio or television reception, which can be determined by turning the equipment off and on, the user is encouraged to try to correct the interference by one or more of the following measures:

- Reorient or relocate the receiving antenna.
- Increase the separation between the equipment
- Connect the equipment into an outlet on a circuit different from that to which the receiver is connected.
- Consult the dealer or an experienced radio /TV technician for help.

Hereby, Shenzhen Sonoff Technologies Co., Ltd. declares that the radio equipment type DW2-RF is in compliance with Directive 2014/53/EU. The full text of the EU declaration of conformity is available at the following internet address:

<https://sonoff.tech/usermanuals>

Documents / Resources



[SONOFF DW2-RF 433MHZ RF Wireless Door-Window Sensor](#) [pdf] User Guide
DW2-RF 433MHZ RF Wireless Door-Window Sensor, DW2-RF, 433MHZ RF Wireless Door-Wi
ndow Sensor, Wireless Door-Window Sensor, Door-Window Sensor, Sensor