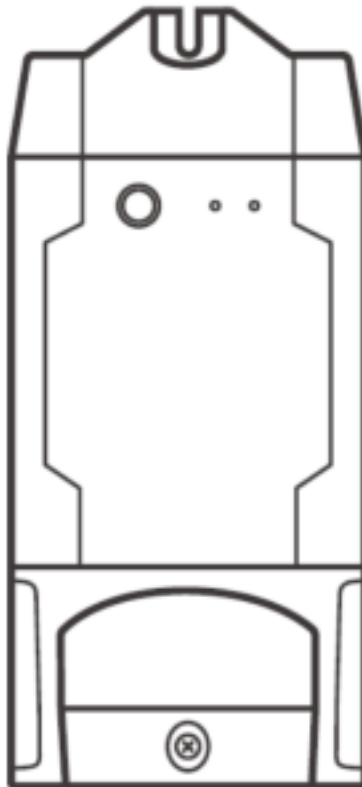


SONOFF DIY POWR2 Power Monitoring Switch User Manual

[Home](#) » [SonOFF](#) » SONOFF DIY POWR2 Power Monitoring Switch User Manual

SONOFF DIY POWR2 Power Monitoring Switch



Contents [[hide](#)]

1 Operating Instruction

1.1 Power off

1.2 Wiring instruction

1.3 Download APP

2 Power on

2.1 Add the device

3 Compatible Pairing Mode

4 Specifications

5 Product Introduction

6 Wi-Fi LED indicator status instruction

7 Features

8 Switch Network

9 Factory Reset

10 Common Problems

11 Warranty Conditions

12 EU Declaration of Conformity

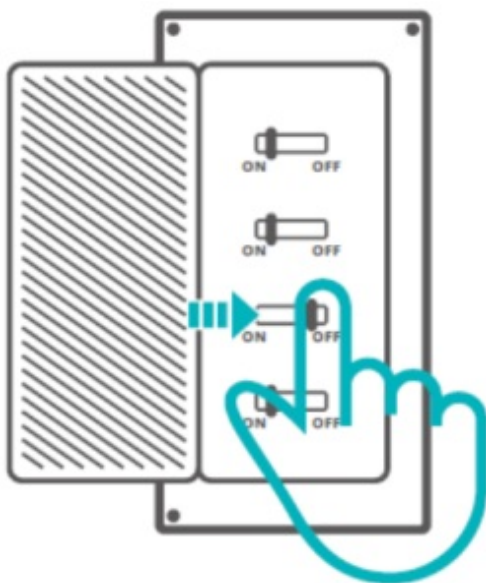
13 WEEE

14 Documents / Resources

15 Related Posts

Operating Instruction

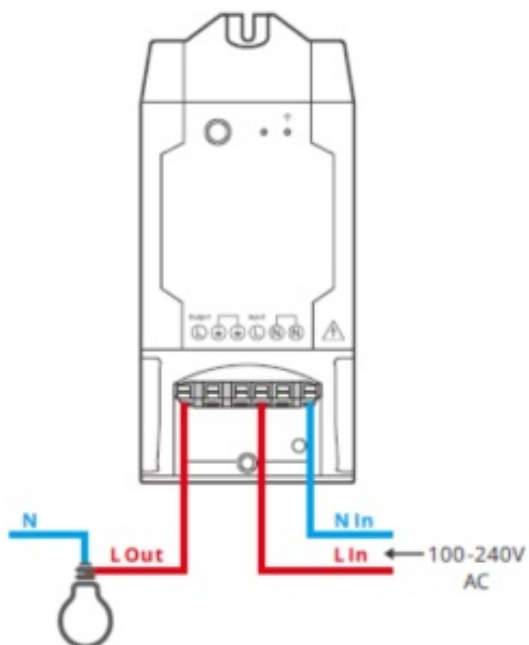
Power off



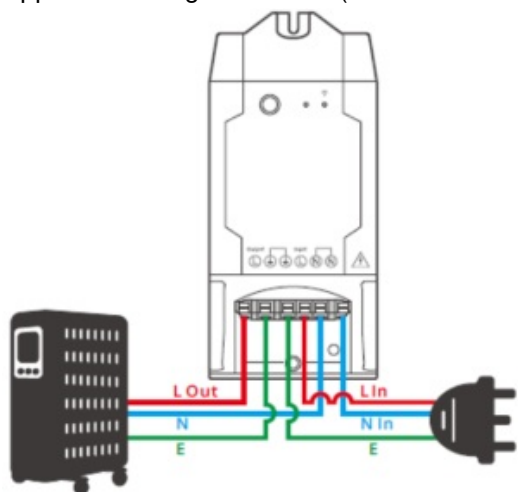
To avoid electric shocks, please consult the dealer or a qualified professional for help when installing and repairing! Please do not touch the switch during use.

Wiring instruction

Light fixture wiring instruction:



Appliance wiring instruction (Don't need to connect if no ground wire):

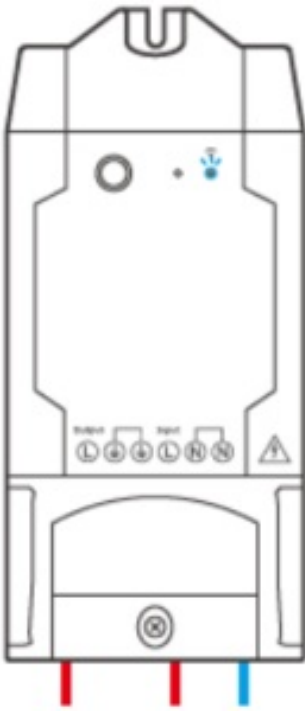


Make sure the neutral wire and live wire connection is correct. 5

Download APP

	<p>Android™ & ios</p>

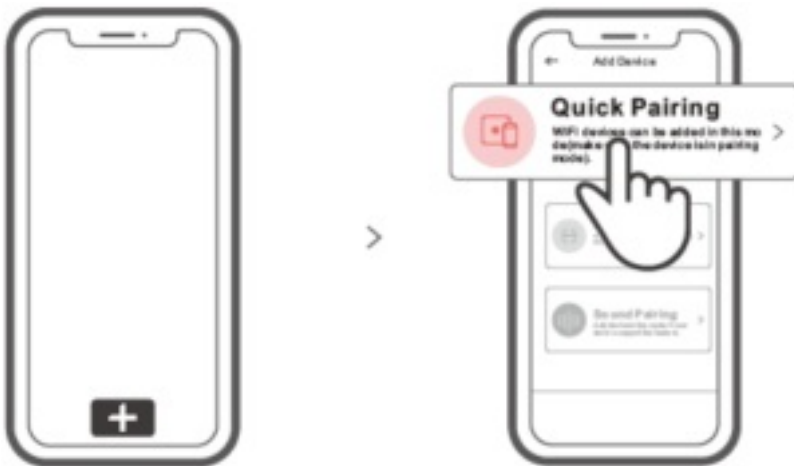
Power on



After powering on, the device will enter the quick pairing mode (Touch) during the first use. The Wi-Fi LED indicator changes in a cycle of two short and one long flash and release.

The device will exit the quick pairing mode (Touch) if not paired within 3mins. If you want to enter this mode, please long press the manual button for about 5s until the WiFi LED indicator changes in a cycle of two short and one long flash and release.

Add the device



Tap “+” and select “Quick Pairing”, then operate following the prompt on the APP.

Compatible Pairing Mode

If you fail to enter Quick Pairing Mode (Touch), please try “Compatible Pairing Mode” to pair.

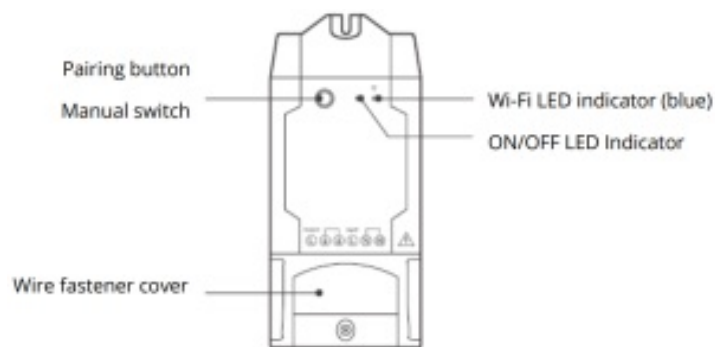
1. Long press Pairing button for 5s until the Wi-Fi LED indicator changes in a cycle of two short flashes and one long flash and release. Long press Pairing button for 5s again until the Wi-Fi LED indicator flashes quickly. Then, the device enters Compatible Pairing Mode.

2. Tap “+” and select “Compatible Pairing Mode” on APP. Select Wi-Fi SSID with ITEAD***** and enter the password 12345678, and then go back to eWeLink APP and tap “Next”. Be patient until pairing completes.

Specifications

Model	POWR2
Input	100-240V AC 50/60Hz
Output	100-240V AC 50/60Hz
Max.Load	15A/3500W
Wi-Fi	IEEE 802.11 b/g/n 2.4GHz
Operating systems	Android & iOS
Working temperature	-10°C~40°C
Material	PC V0
Dimension	114x52x33mm

Product Introduction




The device weight is less than 1 kg. The installation height of less than 2 m is recommended.

Wi-Fi LED indicator status instruction

Wi-Fi LED indicator status	Status instruction
Flashes (one long and two short)	Quick Pairing Mode
Keeps on	Device is connected successfully
Flashes quickly	Compatible Pairing Mode
Flashes quickly once	Unable to discover the router
Flashes quickly twice	Connect to the router but fail to connect to Wi-Fi
Flashes quickly three times	Upgrading

Features

	Remote Control
	Single/Countdown Timing
	Voice Control
	Share Control
	Power Monitoring
	Smart Scene
	Power-on State
	LAN Control

Switch Network

If you need to change the network, long press the pairing button for 5s until the Wi-Fi LED indicator changes in a cycle of two short and one long flash and release, then the device enters quick pairing mode, and you can pair again.



Factory Reset

Deleting the device on the eWeLink app indicates you restore it to factory setting.

Common Problems

Q: Why my device stays “Offline”?

A: The newly added device needs 1 2mins to connect Wi-Fi and network. If it stays offline for a long time, please judge these problems by the blue Wi-Fi indicator status:

1. The blue Wi-Fi indicator quickly flashes once per second, which means that the switch failed to connect your Wi-Fi:
 - ① Maybe you have entered a wrong Wi-Fi password.
 - ② Maybe there's too much distance between the switch your router or the environment causes interference, consider getting close to the router. If failed, please add it again.
 - ③ the 5G Wi-Fi network is not supported and only supports the 2.4GHz wireless network.
 - ④ Maybe the MAC address filtering is open. Please turn it off.

If none of the above methods solved the problem, you can open the mobile data network on your phone to create a Wi-Fi hotspot, then add the device again.

2. Blue indicator quickly flashes twice per second, which means your device has connected to Wi-Fi but failed to connect to the server.

Ensure steady enough network. If double flash occurs frequently, which means you access an unsteady network, not a product problem. If the network is normal, try to turn off the power to restart the switch.

Warranty Conditions

A new product purchased in the Alza.cz sales network is guaranteed for 2 years. If you need repair or other services during the warranty period, contact the product seller directly, you must provide the original proof of purchase with the date of purchase.

The following are considered to be a conflict with the warranty conditions, for which the claimed claim may not be recognized:

- Using the product for any purpose other than that for which the product is intended or failing to follow the instructions for maintenance, operation and service of the product.
- Damage to the product by a natural disaster, the intervention of an unauthorized person or mechanically through the fault of the buyer (e.g. during transport, cleaning by inappropriate means, etc.).
- Natural wear and aging of consumables or components during use (such as batteries, etc.)
- Exposure to adverse external influences, such as sunlight and other radiation or electromagnetic fields, fluid intrusion, object intrusion, mains overvoltage, electrostatic discharge voltage (including lightning), faulty supply or input voltage and inappropriate polarity of this voltage, chemical processes such as used power supplies, etc.
- If anyone has made modifications, modifications, alterations to the design or adaptation to change or extend the functions of the product compared to the purchased design or use of non-original components.

EU Declaration of Conformity

Identification data of the manufacturer's / importer's authorized representative:

Importer: Alza.cz a.s.

Registered office: Jankovcova 1522/53, Holešovice, 170 00 Prague 7

CIN: 27082440

Subject of the declaration:

Title: Wi-Fi Switch

Model / Type: POWR2

The above product has been tested in accordance with the standard(s) used to demonstrate compliance with the essential requirements laid down in the Directive(s):

Directive No. (EU) 2014/53/EU


Directive No. (EU) 2011/65/EU as amended 2015/863/EU

Prague




WEEE



 This product must not be disposed of as normal household waste in accordance with the EU Directive on Waste Electrical and Electronic Equipment (WEEE – 2012/19 / EU). Instead, it shall be returned to the place of purchase or handed over to a public collection point for the recyclable waste. By ensuring this product is disposed of correctly, you will help prevent potential negative consequences for the environment and human health, which could otherwise be caused by inappropriate waste handling of this product. Contact your local authority or the nearest collection point for further details. Improper disposal of this type of waste may result in fines in accordance with national regulations.

Documents / Resources

	<p>SONOFF DIY POWR2 Power Monitoring Switch [pdf] User Manual DIY POWR2, Power Monitoring Switch, DIY POWR2 Power Monitoring Switch, Monitoring Switch</p>
-------------------------------------------------------------------------------------	--------------------------------------------------------------------------------------------------------------------------------------------------------------------------------