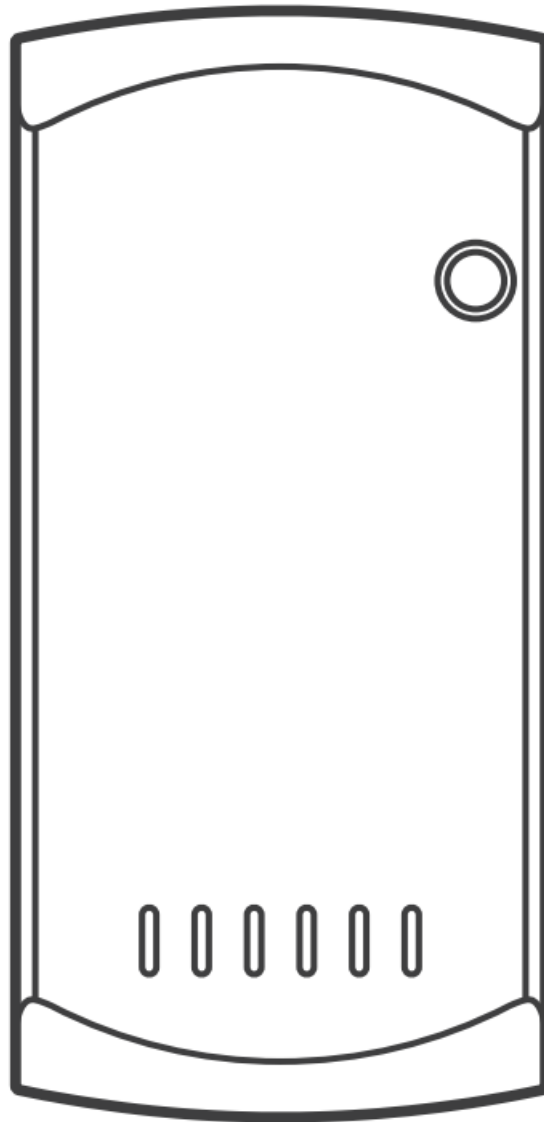




SONOFF DIY iFan03 Wi-Fi Fan & Light Controller User Manual

[Home](#) » [SonOFF](#) » SONOFF DIY iFan03 Wi-Fi Fan & Light Controller User Manual 





User manual V1.2

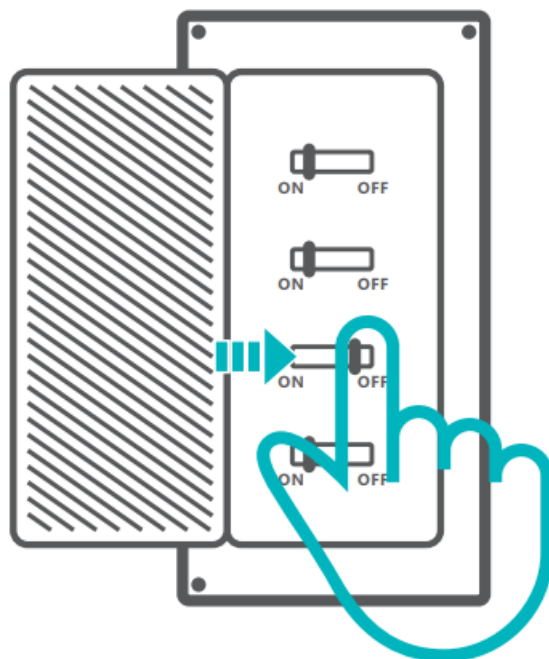
Wi-Fi Fan & Light Controller

Contents

- [1 Operating Instruction](#)
- [2 Specifications](#)
- [3 Product Introduction](#)
- [4 Features](#)
- [5 Switch Network](#)
- [6 Factory Reset](#)
- [7 RM433 remote controller](#)
- [8 Common Problems](#)
- [9 Documents / Resources](#)
- [10 Related Posts](#)

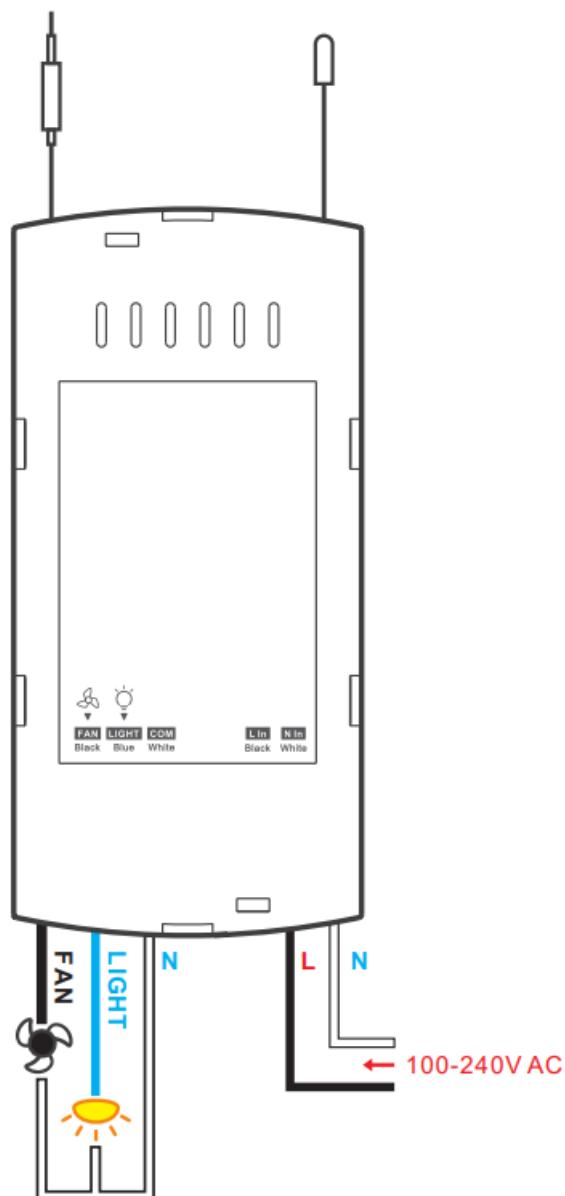
Operating Instruction

1. Power off



To avoid electric shocks, please consult the dealer or a qualified professional for help when installing and repairing!

2. Wiring instruction



- ⚠ Please install protection devices before connecting the live wire. (e.g. fuses or air switches).
- ⚠ Make sure the neutral wire and live wire connection is correct.

3. Download the eWeLink APP



Android™ & iOS

<http://app.coolkit.cc/dl.html>

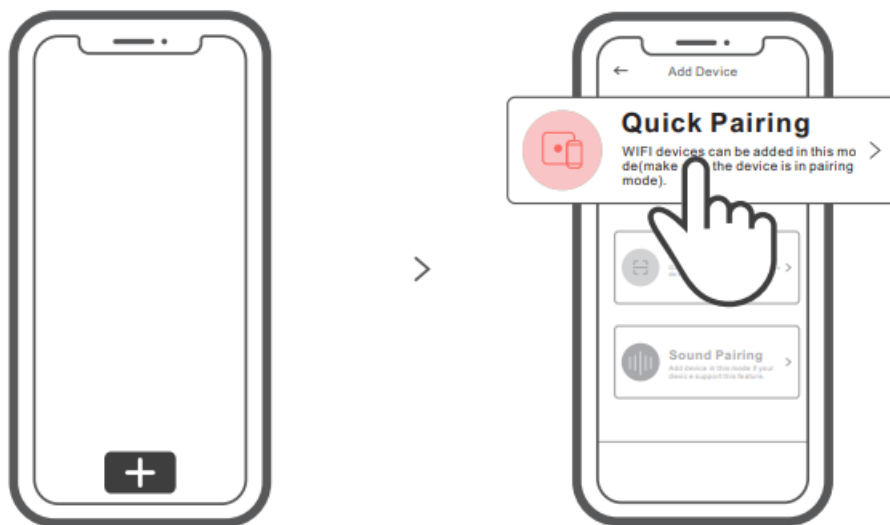
4. Power on



After powering on, the device will enter the quick pairing mode (Touch) during the first use, then the fan makes two short beeps and one long beep.

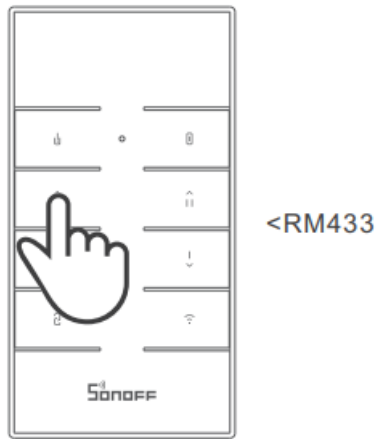
⚠ If not paired within 3mins, the device will exit the quick pairing mode (Touch). If you need to enter again, long-press the “pairing button” on the controller or “Wi-Fi pairing button” on the RM433 remote controller and hold 5s until the fan makes two short and one long “bi” sounds and releases.

5. Add the device



Tap “+” and select “Quick Pairing”, then operate following the prompt on the APP.

Pairing method for the device and SONOFF RM433 remote controller:



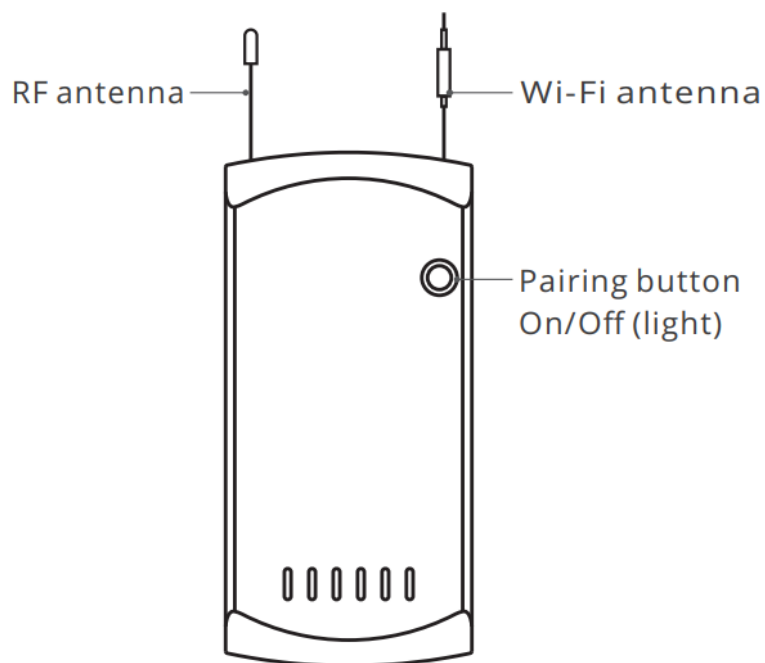
Please press any button within 5s after powering on again until the ceiling fan makes a sound “di”, and pairing is successful.

! The device can pair with up to 10 remote controllers and the 11th remote controller data will cover the 1st.

Specifications

Model	iFan03
Input	100-240V AC 50/60Hz 5A
Output	Light: 1 00-240V AC 50/60Hz 3A Tungsten lamp: 660W/220V Max LED: 300W/220V Max Fan: 1 00-240V AC 50/60Hz 2A Max
RF	433.92MHz
Wi-Fi	IEEE 802.11 b/g/n 2.4GHz
Operating systems	Android & iOS
Working temperature	-10°C-40°C
Material	PC VO
Dimension	116x55x26mm

Product Introduction



⚠ The device's weight is less than 1 kg.
An installation height of less than 2 m is recommended.

Features

Remotely turn on/off the device, schedule it on/off or share it with your family to control together.



Remote Control



Single/Countdown
Timing



Voice Control



Share Control



Smart Scene



Sync Status



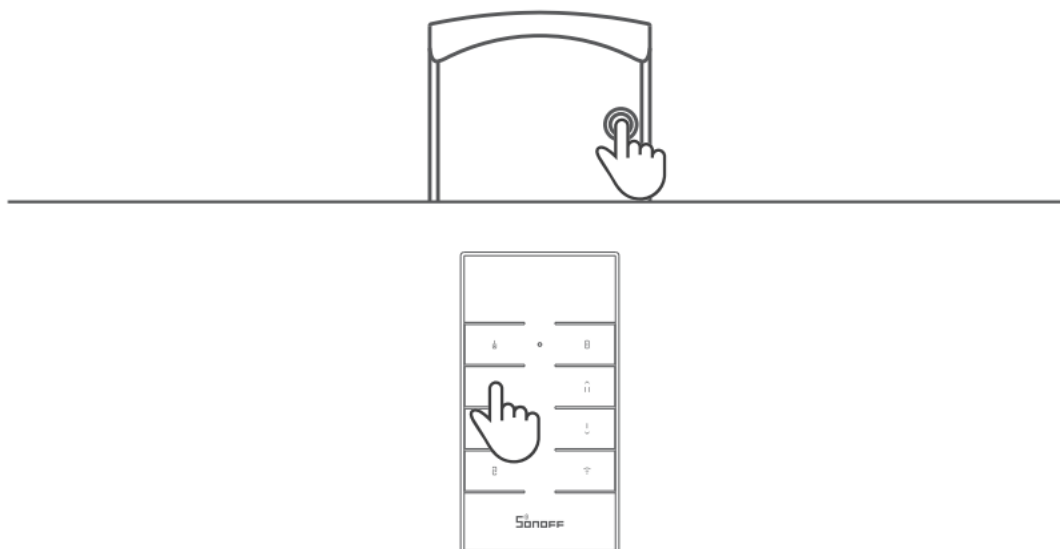
433MHz Remote
Control



LAN Control

Switch Network

If you need to change the network, Long press the “pairing button” on the controller or “Wi-Fi pairing button” on the RM433 remote controller and hold 5s until the fan makes two short and one long “bi” sounds and releases., then the device enters quick pairing mode and you can pair again.

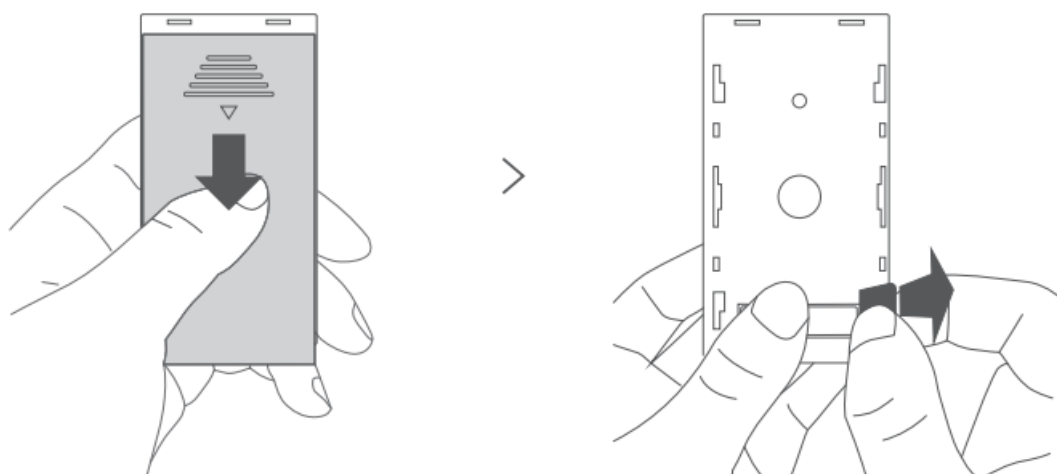


Factory Reset

Deleting the device on the eWeLink app indicates you restore it to the factory setting.

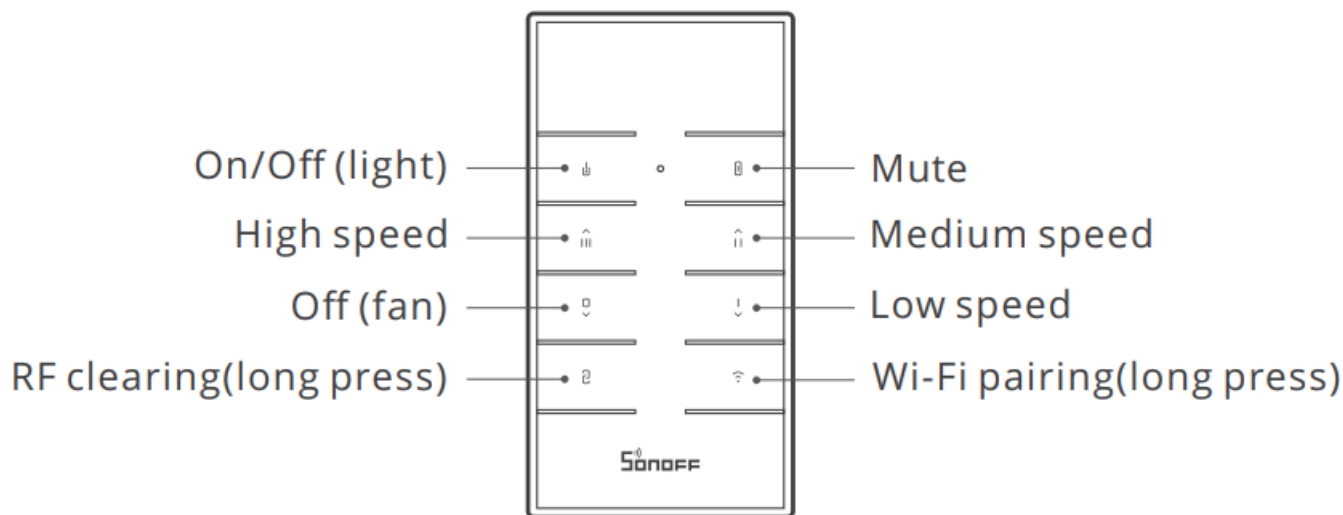
RM433 remote controller

Before operating the product, please press and push down the back cover until it removes, then presses the battery and pulls out the insulation sheet.



Model	RM433
RF	433.92MHz
Power supply	12V removable battery (Model: 27A)
Material	PC VO
Remote controller size	86x45x12.5mm

The iFan03 supports the remote controller with a 433.92MHz frequency band to turn on/off, after pairing with one button, all buttons can control the connected device, which is local short-range wireless control, not Wi-Fi control.



RF clearing method:

Long press for 5s until the ceiling fan makes two sounds “di di” to clear the code successfully.

Wi-Fi pairing method:

Long press for 5s until the fan makes two short and one long “bi” sound to enter the quick pairing mode (Touch). then you can add the light on the eWeLink APP.



In quick pairing mode, you can short press any button on the remote controller to exit this mode.

Common Problems

Q: Why does my device stay “Offline”?

A: The newly added device needs 1 – 2mins to connect to Wi-Fi and network. If it stays offline for a long time, please judge the problem according to the following methods:

1. Maybe you have entered the wrong Wi-Fi password.
2. Maybe there's too much distance between the switch your router or the environment causes interference, consider getting close to the router. If failed, please add it again.
3. The 5G Wi-Fi network is not supported and only supports the 2.4GHz wireless network.
4. Maybe the MAC address filtering is open. Please turn it off.
5. Ensure a steady enough network.
6. If none of the above methods solved the problem, you can open the mobile data network on your phone to create a Wi-Fi hotspot, then add the device again.

FCC Warning

Changes or modifications not expressly approved by the party responsible for compliance could avoid the user's authority to operate the equipment.

This device complies with part 15 of the FCC Rules. Operation is subject to the following two conditions: (1) This device may not cause harmful interference, and (2) this device must accept any interference received, including interference that may cause undesired operation.

FCC Radiation Exposure Statement:

This equipment complies with FCC radiation exposure limits set forth for an uncontrolled environment. This equipment should be installed and operated with a minimum distance 20cm between the radiator & your body. This transmitter must not be co-located or operating in

conjunction with any other antenna or transmitter.

Note:

This equipment has been tested and found to comply with the limits for a Class B digital device, pursuant to part 15 of the FCC Rules. These limits are designed to provide reasonable protection against harmful interference in a residential installation. This equipment generates, uses, and can radiate radio frequency energy and, if not installed and used in accordance with the instructions, may cause harmful interference to radio communications. However, there is no guarantee that interference will not occur in a particular installation. If this equipment does cause harmful interference to radio or television reception, which can be determined by turning the equipment off and on, the user is encouraged to try to correct the interference by one or more of the following measures:

- Reorient or relocate the receiving antenna.
- Increase the separation between the equipment and receiver.
- Connect the equipment into an outlet on a circuit different from that to which the receiver is connected.
- Consult the dealer or an experienced radio/TV technician for help.

Hereby, Shenzhen Sonoff Technologies Co., Ltd. declares that the radio equipment type iFan03 is in compliance with Directive 2014/53/EU. The full text of the EU

declaration of conformity is available at the following internet address: <https://sonoff.tech/usermanuals>

TX Frequency:

WiFi: 2412-2472MHz

RX Frequency:

WiFi: 2412-2472MHz SRD: 433.92MHz

Output Power:

14.35dBm(802.11b), 13.61dBm(802.11g), 13.37dBm(802.11n20)



Shenzhen Sonoff Technologies Co., Ltd.
1001, BLDG8, Lianhua Industrial Park, shenzhen, GD, China
ZIP code: 518000 Website: sonoff.tech
MADE IN CHINA



Documents / Resources



[SONOFF DIY iFan03 Wi-Fi Fan & Light Controller](#) [pdf] User Manual
 DIY iFan03, Wi-Fi Fan Light Controller