



## SONOFF CAM-S2 Wi-Fi Smart Security Camera User Guide

[Home](#) » [SonOFF](#) » SONOFF CAM-S2 Wi-Fi Smart Security Camera User Guide 

### Contents

- [1 SONOFF CAM-S2 Wi-Fi Smart Security Camera](#)
- [2 Installation](#)
- [3 FCC compliance statement](#)
- [4 Documents / Resources](#)
  - [4.1 References](#)
- [5 Related Posts](#)



**SONOFF CAM-S2 Wi-Fi Smart Security Camera**



## **Sonoff CAM Slim Gen2 Quick Guide v1.0**

### **Wi-Fi Smart Security Camera**

#### **Introduction**

- Product Name: Sonoff CAM Slim Gen2
- Model: CAM-S2
- Wi-Fi: IEEE 802.11 b/g/n 2.4GHz
- Resolution: 1080P
- Power Supply: DC 5V 1A
- App: eWeLink

Download the eWeLink app from Google Play or the App Store.

#### **Installation**

1. Connect the camera to a power source using the provided USB cable.
2. Open the eWeLink app and follow the on-screen instructions to add the camera.

#### **Camera Setup**

Ensure your mobile device is connected to a 2.4GHz Wi-Fi network. Use the eWeLink app to scan the QR code on the camera to complete the setup.

#### **Mounting the Camera**

Use the included mounting bracket to install the camera on a wall or ceiling. Adjust the angle as needed.

- Drill holes and insert the expansion plugs.

- Secure the bracket with screws.
- Attach the camera to the bracket.

## User Manual

For detailed instructions, visit: <https://sonoff.tech/usermanuals>

## Specifications

Feature	Details
Resolution	1080P
Wi-Fi	IEEE 802.11 b/g/n 2.4GHz
Power Supply	DC 5V 1A

## FCC Compliance Statement

This device complies with Part 15 of the FCC Rules. Operation is subject to the following two conditions: (1) this device may not cause harmful interference, and (2) this device must accept any interference received, including interference that may cause undesired operation.

## FAQ

- **How do I reset the camera?**
  - Press and hold the reset button for 5 seconds until the LED indicator blinks.
- **What should I do if the camera is offline?**
  - Check your Wi-Fi connection and ensure the camera is powered on. Restart the camera if necessary.
- **Can I use the camera outdoors?**
  - The camera is designed for indoor use only.

## Warranty and Support

For warranty information and support, visit: <https://sonoff.tech/support>

## Disposal and Recycling Information

This product should not be disposed of with household waste. Please recycle where facilities exist. Check with your local authority for recycling advice.

## CAM Slim Gen2

Quick Guide V1 .0

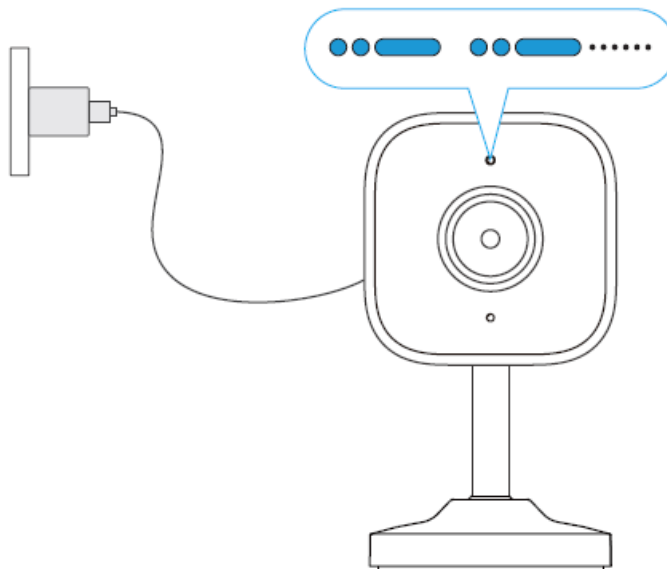
Wi-Fi Smart Security Camera



1. Download the eWeLink App

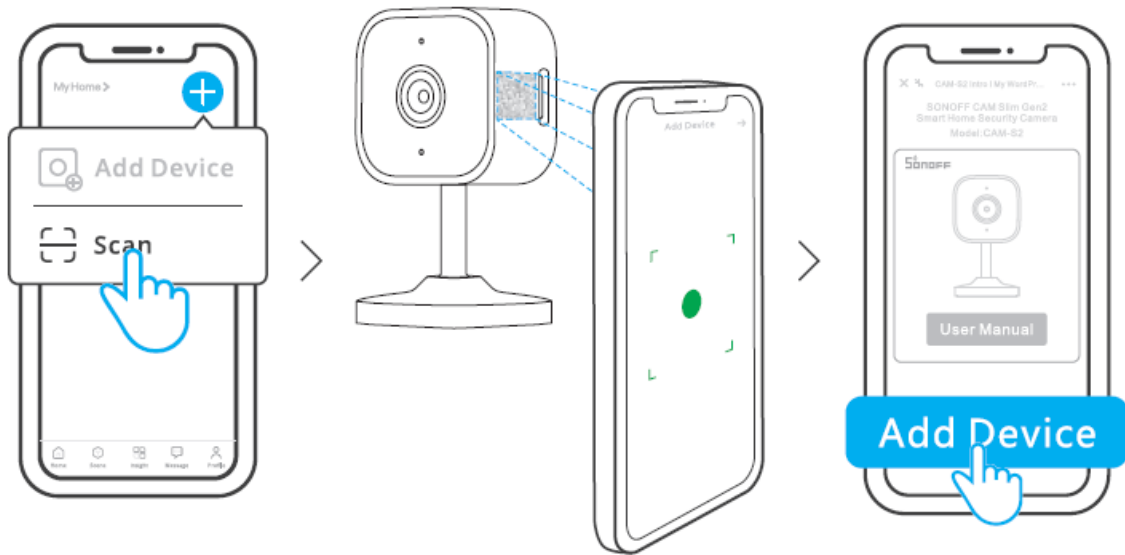


2. Power On



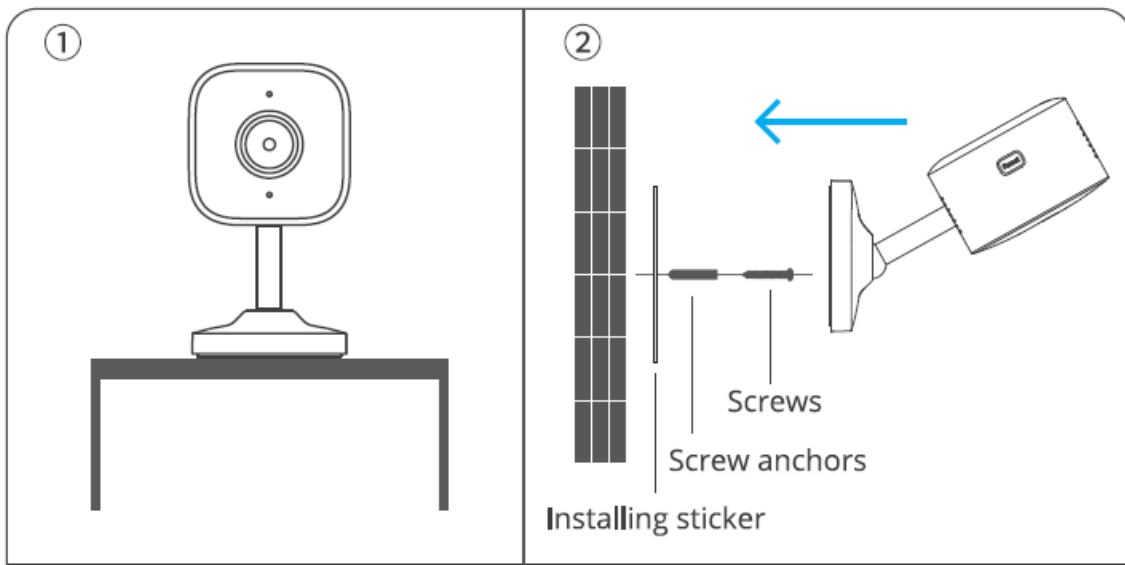
Insert the USB Type-C cable, once the device completes startup, it will enter the default pairing mode for the first use. The device LED indicator will then flash in a blue “short-short-long” pattern (if the LED indicator does not flash in this pattern, please press and hold the device reset button for 5 seconds to make the device enter the pairing mode again).

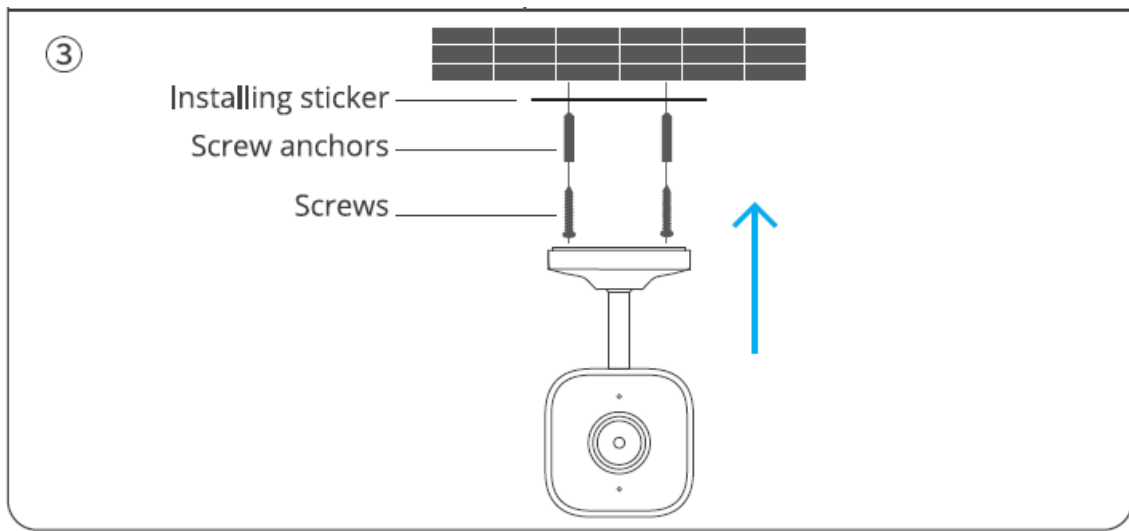
**Scan QR Code to Add the Device**



- Open the eWpLink App and scan the QR code on the device. then follow the instructions given by the App to proceed.
- If the page doesn't display after scanning the code, please click the '+' button in the top right corner of the eWpLink App homepage. Select 'Add Device' to proceed.

## Installation





This device can be placed on a desktop (Figure O), mounted on a wall (Figure Q)), or installed on the ceiling (Figure O).-

### User Manual

<https://sonoff.tech/usermanuals>

Enter the website provided above to view the User Manual for the device.

### FCC compliance statement

1. This device complies with part 15 of the FCC Rules. Operation is subject to the following two conditions:
  1. This device not cause harmful interference. and
  2. This device must accept any interference received, including interference that cause undesired
2. Changes or modifications not expressly approved the party responsible for compliance could void the user's authority to operate the equipment.

**Note:** This equipment has been tested and found to comply with the limits for a Class B digital device, pursuant to part 15 of the FCC Rules. These limits are designed to provide reasonable protection against harmful interference in a residential installation. This equipment generates, uses and can radiate radio frequency energy and, if not installed and used in accordance with the instructions, may cause harmful interference to radio communications. However, there is no guarantee that interference will not occur in a particular installation. If this equipment does cause harmful interference to radio or television reception, which can be determined by turning the equipment off and on, the user is encouraged to try to correct the interference by one or more of the following measures

- Reorient or relocate the receiving antenna.
- Increase the separation between the equipment and receiver.
- Connect the equipment into an outlet on a circuit different from that to which the receiver is connected.
- Consult the dealer or an experienced radio/TV technician for help.

**FCC Radiation Exposure statement:** The SAR limit of FCC is 1.6W/kg over 1 gram of tissue for use against the body. The highest SAR value reported under this standard during product certification when properly worn on the body is 0.793W/kg.



### WEEE Disposal and Recycling Information

All products bearing this symbol are waste electrical and electronic equipment (WEEE as in directive 2012/19/EU) which should not be mixed with unsorted household waste. Instead, you should protect human health and the environment by handing over your waste equipment to a designated collection point for the recycling of waste electrical and electronic equipment, appointed by the government or local authorities. Correct disposal and recycling will help prevent potential negative consequences to the environment and human health. Please contact the installer or local authorities for more information about the location as well as terms and conditions of such collection points.

### SAR Warning

Under normal use of condition, this equipment should be kept a separation distance of at least 20 cm between the antenna and the body of the riser

### EU Declaration of Conformity

Hereby, Shenzhen Sonoff Technologies Co., Ltd. declares that the radio equipment type CAM-S2 is in compliance with Directive 2014/53/EU. The full text of the EU declaration of conformity is available at the following internet address: <https://sonoff.tech/compliance/>

### For CE frequency

- **EU Operating Frequency Range** Wi-Fi: 802.11 b/g/n20 2412-2472 MHz, 802.11 n40: 2422-2462 MHz BLE: 2402-2480 MHz
- **EU Output Power** Wi-Fi  $2.4G \leq 20\text{dBm}$  BLE  $\leq 10\text{dBm}$

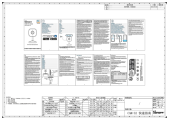


[www.quefairedemesdechets.fr](http://www.quefairedemesdechets.fr)



- Shenzhen Sonoff Technologies Co., Ltd.
- 3F & 6F, BldgA, No. 663, Bulong Rd, Shenzhen, Guangdong, China
- ZIP code: 518000
- **Service email:** [support@itead.cc](mailto:support@itead.cc)
- **Website:** [sonoff.tech](http://sonoff.tech)
- CHINA

## Documents / Resources



[SONOFF CAM-S2 Wi-Fi Smart Security Camera](#) [pdf] User Guide  
CAM-S2 Wi-Fi Smart Security Camera, CAM-S2, Wi-Fi Smart Security Camera, Smart Security Camera, Security Camera, Camera

## References

- [User Manual](#)

**Manuals+, Privacy Policy**

This website is an independent publication and is neither affiliated with nor endorsed by any of the trademark owners. The "Bluetooth®" word mark and logos are registered trademarks owned by Bluetooth SIG, Inc. The "Wi-Fi®" word mark and logos are registered trademarks owned by the Wi-Fi Alliance. Any use of these marks on this website does not imply any affiliation with or endorsement.