



SONOFF BASICR2 Wifi Smart Switch User Manual

[Home](#) » [SonOFF](#) » SONOFF BASICR2 Wifi Smart Switch User Manual 

Contents

- 1 SONOFF BASICR2 Wifi Smart Switch
- 2 Operating Instruction
- 3 Compatible Pairing Mode
- 4 SPECIFICATIONS
- 5 Product Introduction
- 6 Wi-Fi LED indicator status instruction
- 7 Features
- 8 Factory Reset
- 9 FCC compliance statement
- 10 ISED Notice
- 11 Important Safety Instructions
- 12 For CE Frequency
- 13 Documents / Resources
 - 13.1 References
- 14 Related Posts

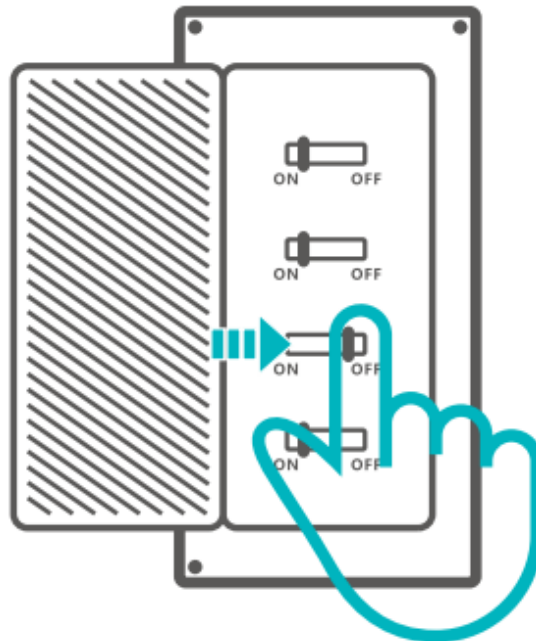


SONOFF BASICR2 Wifi Smart Switch



Operating Instruction

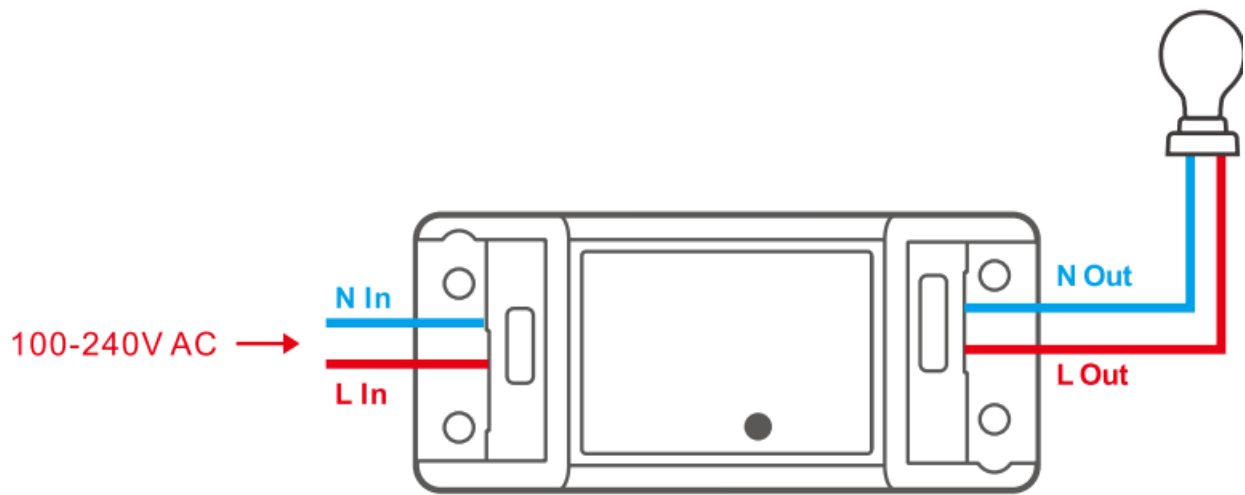
1. Power off



To avoid electric shocks, please consult the dealer or a qualified professional for help when installing and repairing! Please do not touch the switch during use.

2. Wiring instruction

Wiring: 16-1 SAWG SOL/STR copper conductor only, Tightening torque: 3.5 lb-in.

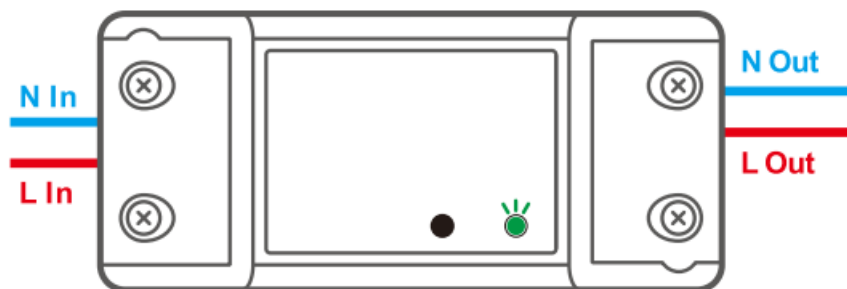


- Make sure the neutral wire and live wire connection is correct.
- To ensure the safety of your electrical installation, it's essential either a Miniature Circuit Breaker (MCB) or a Residual Current Operated Circuit Breaker (RCBO) with an electrical rating of 1 0A has been installed before the BASICR2, RFR2.

3. Download the eWeLinkAPP

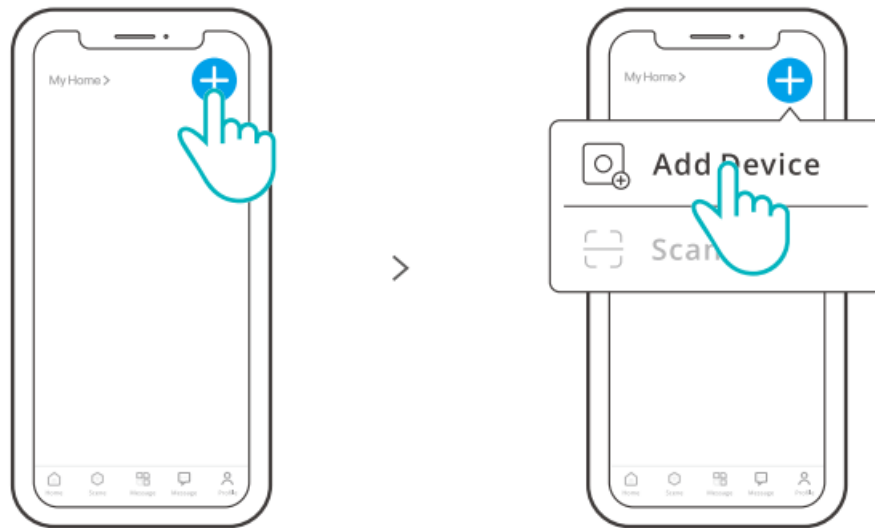


4. Power on



- After powering on, the device will enter the quick pairing mode during the first use. The Wi-Fi LED indicator changes in a cycle of two short and one long flash and release.
- The device will exit the quick pairing mode if not paired within 3mins. If you want to enter this mode, please long press the manual button for about 5s until the Wi-Fi LED indicator changes in a cycle of two short and one long flash and release.

5. Add the device



Tap “+” and select” Add Device”, then operate following the prompt on the App.

Compatible Pairing Mode

If you fail to enter Quick Pairing Mode , please try “Compatible Pairing Mode ” to pair.

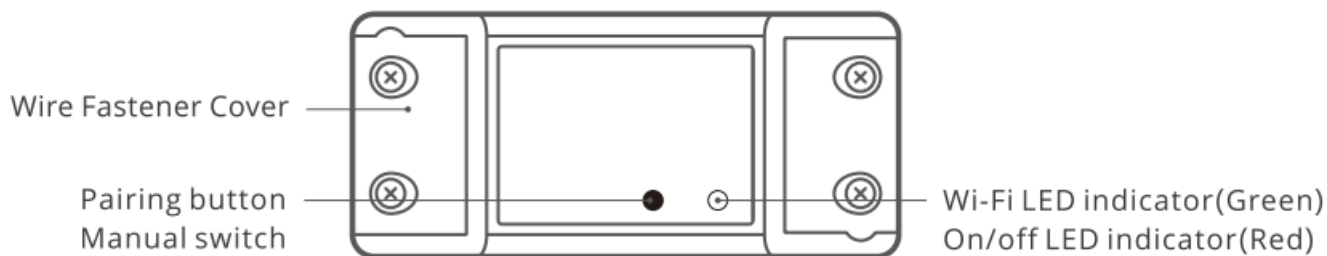
- Long press Pairing button for Ss until the Wi-Fi LED indicator changes in a cycle of two short flashes and one long flash and release. Long press Pairing button for Ss again until the Wi-Fi LED indicator flashes quickly. Then, the device enters Compatible Pairing Mode.
- Tap “+” and select “Add Device”, then operate following the prompt on the App.

SPECIFICATIONS

Model	BASICR2/RFR2
Input	100-240V AC 50/60Hz 10A
Output	100-240V AC 50/60Hz Max. Load: 10A
Operating systems	Android & iOS
Wi-Fi	IEEE 802.11 b/g/n 2.4GHz
RF	433,92MHz
Material	PC V0
Dimension	88x39x24mm

- BASICR2 does not support the remote controller with 433.92MHz.

Product Introduction



- The device weight is less than 1 kg.
- The installation height of less than 2 mis recommended.

Wi-Fi LED indicator status instruction

Wi-Fi LED indicator status	Status instruction
Flashes (one long and two short)	Quick Pairing Mode
Keeps on	Device is connected successfully
Flashes quickly	Compatible Pairing Mode
Flashes quickly once	Unable to discover the router
Flashes quickly twice	Connect to the router but fail to connect to Wi-Fi
Flashes quickly three times	Upgrading

Features

- Turn on/off the device from anywhere. schedule power on/off and share APP with your family to control.



Remote Control



Single/Countdown
Timing



Voice Control



Share Control



Smart Scene



Sync Status



433MHz Remote
Control



Camera Linking



Power-on State



LAN Control

RF Remote Controller Pairing

- The RFR2 supports the remote controller with 433.92M Hz frequency brand to turn on/off, and each channel can learn it independently, which is local short-range wireless control not Wi-Fi control.

Pairing Method

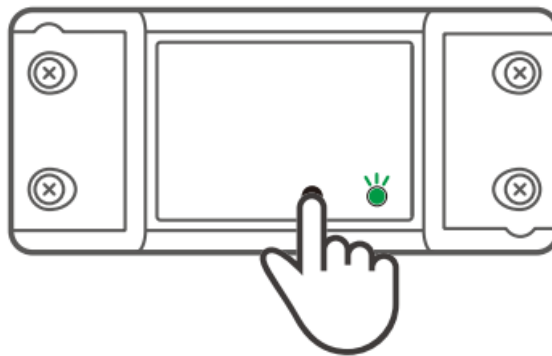
- Long press the configuration button for 3s until the red LED indicator flashes red once, then short press the remote control button you want to pair for successful learning.

Clearing Method

- Long press the configuration button for 5s until the red LED indicator flashes red twice, then short press the learned button corresponding to the remote controller to clear code values of all learned buttons.

Switch Network

- If you need to change the network, long press the pairing button for 5s until the Wi-Fi LED indicator changes in a cycle of two short and one long flash and release, then the device enters quick pairing mode and you can pair again.



Factory Reset

- Deleting the device on the eWeLink app indicates you restore it to factory setting.

Common Problems

Q: Why my device stays “Offline”?

A: The newly added device needs 1 – 2mins to connect Wi-Fi and network. If it stays offline for a long time, please judge these problems by the green Wi-Fi indicator status:

1. The green Wi-Fi indicator quickly flashes once per second, which means that the switch failed to connect your Wi-Fi
 1. Maybe you have entered a wrong Wi-Fi password.
 2. Maybe there's too much distance between the switch your router or the environment causes interference, consider getting close to the router. If failed, please add it again.
 3. The SG Wi-Fi network is not supported and only supports the 2.4GHz wireless network.
 4. Maybe the MAC address filtering is open. Please turn it off.
2. Green indicator quickly flashes twice per second, which means your device has connected to Wi-Fi but failed to connect to the server.

Ensure steady enough network. If double flash occurs frequently, which means you access an unsteady network, not a product problem. If the network is normal, try to turn off the power to restart the switch.

FCC compliance statement

This device complies with part 15 of the FCC Rules. Operation is subject to the following two conditions

1. This device may not cause harmful interference, and
2. This device must accept any interference received, including interference that may cause undesired operation.

- Changes or modifications not expressly approved by the party responsible for compliance could void the user's authority to operate the equipment.

Note: This equipment has been tested and found to comply with the limits for a Class B digital device, pursuant to part 15 of the FCC Rules.

- These limits are designed to provide reasonable protection against harmful interference in a residential installation.

This equipment generates, uses and can radiate radio frequency energy and, if not installed and used in accordance with the instructions, may cause harmful interference to radio communications. However, there is no guarantee that interference will not occur in a particular installation.

- If this equipment does cause harmful interference to radio or television reception, which can be determined by turning the equipment off and on, the user is encouraged to try to correct the interference by one or more of the following measures:
 - Reorient or relocate the receiving antenna.
 - Increase the separation between the equipment and receiver.
 - Connect the equipment into an outlet on a circuit different from that to which the receiver is connected.
 - Consult the dealer or an experienced radian technician for help.

FCC Radiation Exposure statement

- This equipment complies with FCC radiation exposure limits set forth for an uncontrolled environment.
- This equipment should be installed and operated with minimum distance of 20 cm between the radiator and your body.
- This transmitter must not be co-located or operating in conjunction with any other antenna or transmitter.

Scatola	Manuale	Borsa
PAP 21	PAP 22	LDPE 4
Carta	Carta	Plastica
RACCOLTA DIFFERENZIATA		
Verifica le disposizioni del tuo Comune. Separa le componenti e conferiscile in modo corretto.		

ISED Notice

This device contains licence-exempt transmitter(s)/receiver(s) that comply with Innovation, Science and Economic Development Canada's licence-exempt RSS(s). Operation is subject to the following two conditions:

1. This device may not cause interference.
2. This device must accept any interference, including interference that may cause undesired operation of the device.

This Class B digital apparatus complies with Canadian ICES-003(B).

- This device complies with RSS-247 of Industry Canada.
- Operation is subject to the condition that this device does not cause harmful interference.

SED Radiation Exposure Statement

- This equipment complies with ISED radiation exposure limits set forth for an uncontrolled environment.
- This equipment should be installed and operated with minimum distance of 20 cm between the radiator and your body.
- This transmitter must not be co-located or operating in conjunction with any other antenna or transmitter

Important Safety Instructions

1. **CAUTION:** Risk of electric shock, This product is not a toy and not intended for use by children. For adult use only.
2. The maximum ambient temperature during use of the appliance must not exceed 40°C.
3. The appliance is suitable for moderate climates only.
4. The ventilation must not be impaired by covering the appliance with items such as newspapers, table cloths, curtains, etc.
5. Naked flame sources, such as candles, must not be placed on the appliance.

SAR Warning

- Under normal use of condition, this equipment should be kept a separation distance of at least 20 cm between the antenna and the body of the user.

WEEE Disposal and Recycling Information

- All products bearing this symbol are waste electrical and electronic equipment (WEEE as in directive 2012/19/EU) which should not be mixed with unsorted household waste. Instead, you should protect human health and the environment by handing over your waste equipment to a designated collection point for the recycling of waste electrical and electronic equipment, appointed by the government or local authorities. Correct disposal and recycling will help prevent potential negative consequences to the environment and human health. Please contact the installer or local authorities for more information about the location as well as terms and conditions of such collection points.

EU Declaration of Conformity

- Hereby, Shenzhen Son off Technologies Co., Ltd. declares that the radio equipment type BASICR2, RFR2 is in

compliance with Directive 2014/53/EU. The full text of the EU declaration of conformity is available at the following internet address: <https://sonoff.tech/compliance/>.

For CE Frequency

- **EU Operating Frequency Range**

- **Wi-Fi:** 802.11 b/g/n20 2412-2472 MHz
- **802.11 n40:** 2422-2462 MHz
- **SRO:** 433.92MHz (RFR2, Receive Only)

- **EU Output Power**

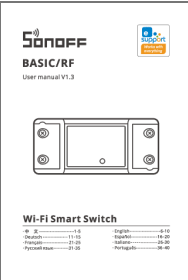
- Wi-Fi 2.4GQOdBm
- To ensure the safety of your electrical installation, it's essential either a Miniature Circuit Breaker (MCB) or a Residual Current Operated Circuit Breaker (RCBO) with an electrical rating of 1 OA has been installed before the BASICR2, RFR2 .

Shenzhen Sonoff Technologies Co., Ltd.

- 3F&6F, Bldg A, No. 663, Bu long Rd, Shenzhen, Guangdong, China
 - **ZIP code:** 518000
 - **Website:** sonoff.tech
 - **Service email:** support@itead.cc
 - MADE IN CHINA



Documents / Resources

	<p>SONOFF BASICR2 Wifi Smart Switch [pdf] User Manual BASICR2 Wifi Smart Switch, BASICR2, Wifi Smart Switch, Smart Switch, Switch</p>
---	---

References

- [User Manual](#)

