



SONOFF BASICR2 Wi-Fi Smart Switch Installation Guide

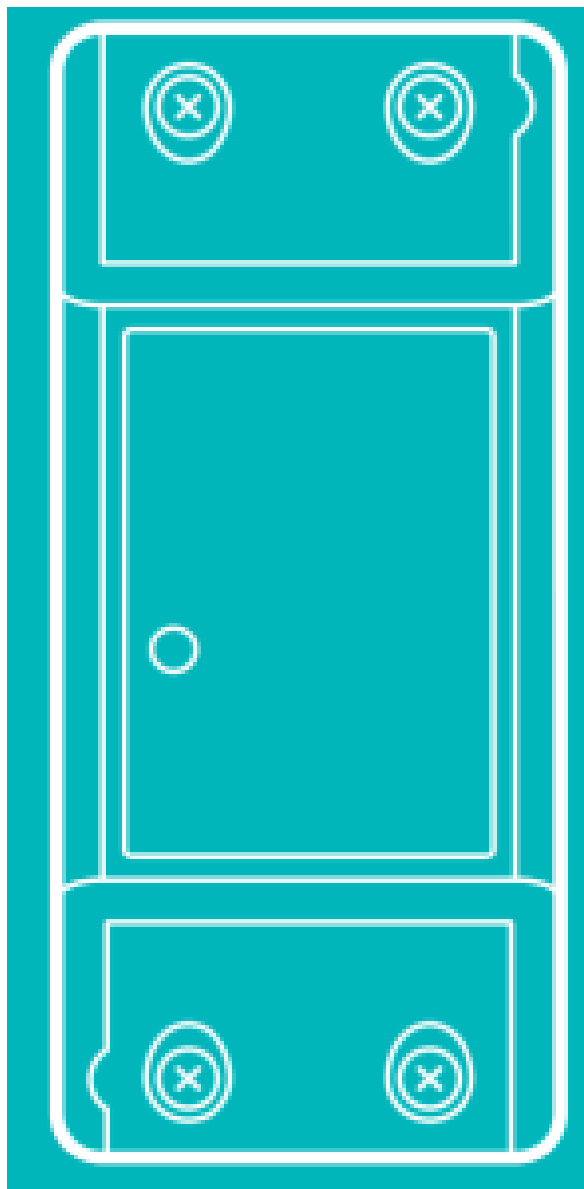
[Home](#) » [SonOFF](#) » SONOFF BASICR2 Wi-Fi Smart Switch Installation Guide 



DIYBasic

Quick Installation Guide V 1.2

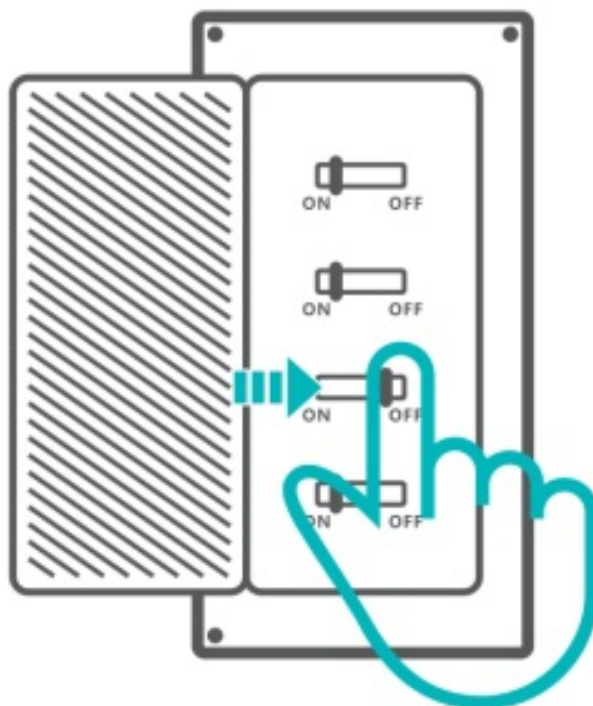





Contents

- [1 Power off](#)
- [2 Wiring instruction](#)
- [3 Download APP](#)
- [4 Power on](#)
- [5 Add the device](#)
- [6 User Manual](#)
- [7 FCC Warning](#)
- [8 Documents / Resources](#)
- [9 Related Posts](#)

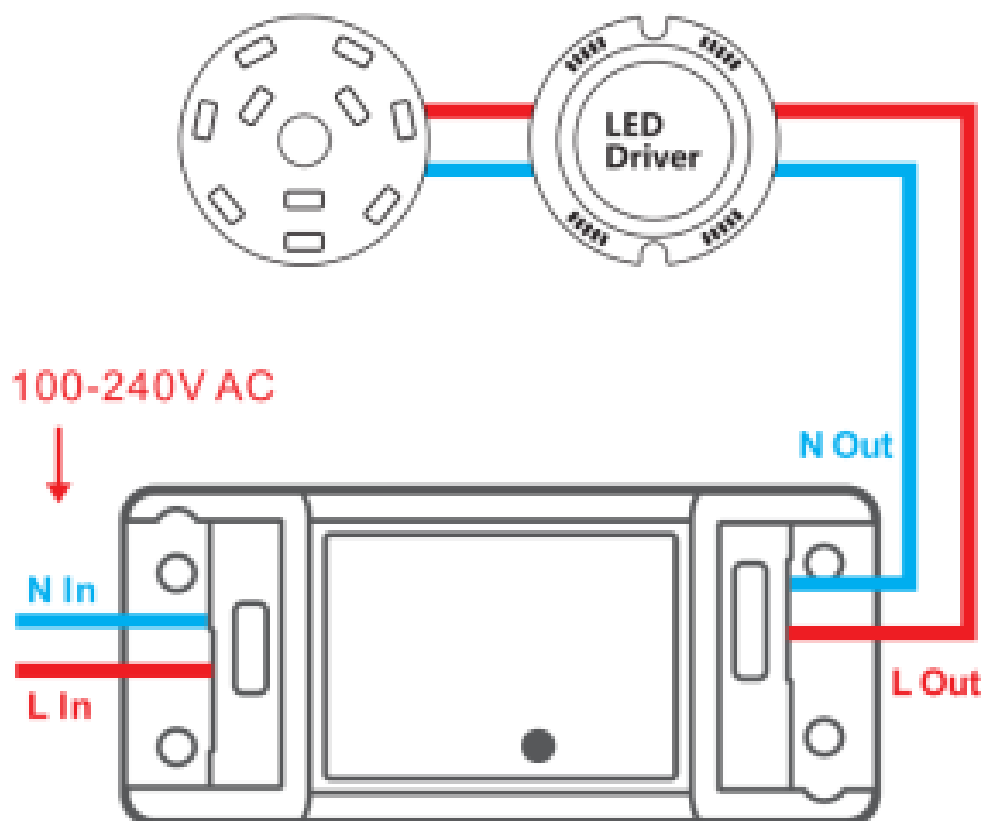
Power off



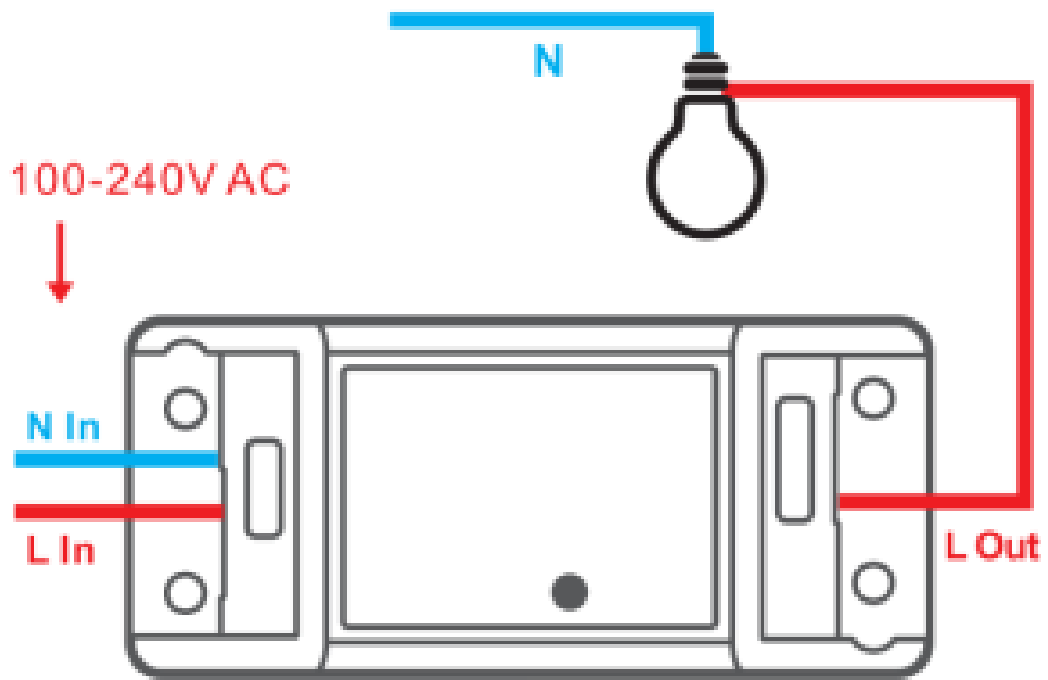
 To avoid electric shocks, please consult the dealer or a qualified professional for help when installing and repairing! Please do not touch the switch during use.

Wiring instruction

Ceiling lamp wiring instruction



One live wire wiring instruction



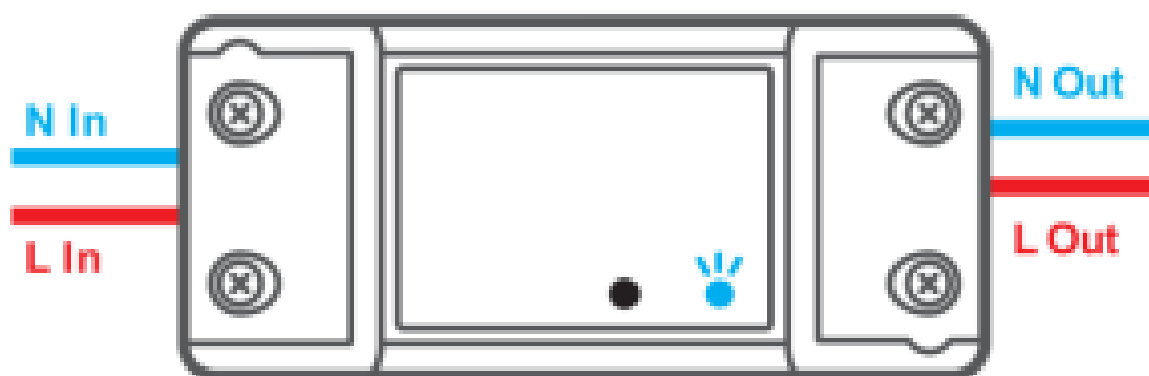
Make sure the neutral wire and live wire connection is correct

Download APP



<http://app.coolkit.cc/dl.html>

Power on



After powering on, the device will enter the quick pairing mode (Touch) during the first use. The Wi-Fi LED indicator changes in a cycle of two short and one long flash and release.

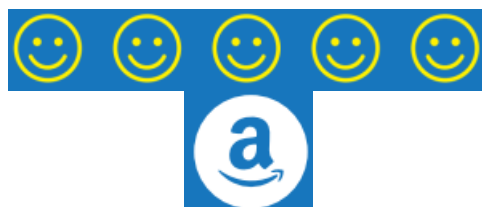


The device will exit the quick pairing mode (Touch) if not paired within 3mins. If you want to enter this mode, please long press the manual button for about 5s until the Wi-Fi LED indicator changes in a cycle of two short and one long flash and release.

LIKE IT!

Glad to know you are satisfied with SONOFF products.

It would mean a lot to us if you can take a minute to share your buying experience.



Share it on Amazon



Share it with your friends and family

Get the latest news by following us:

New arrival Promotion How-to videos

HAVE A PROBLEM?

We are so sorry for the inconvenience caused by the product. Please contact us for help via the email address below.



support@itead.cc

We will get back to you as soon as possible.



YouTube

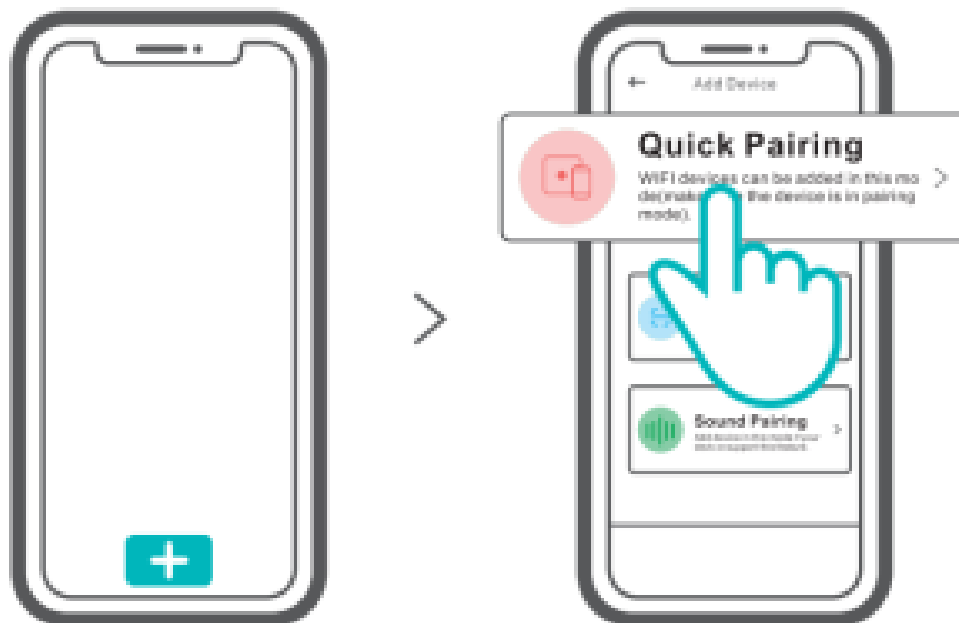
https://www.youtube.com/channel/UC1EsS_wR0_isqSbbN-ZM8GA



facebook

<https://www.facebook.com/SONOFF.official/>

Add the device



Tap “+” and select “Quick Pairing” then operate following the prompt on the APP.

Tippen Sie auf +, wählen Sie ~Quick Pairing” und arbeiten Sie dann gem~ der Aufforderung auf der APP

User Manual

Scan the QR code or visit the website to learn about the detailed user manual and help



<https://www.sonoff.tech/usermanuals>

Scan the QR code to read the voice control instruction for Amazon Echo and Google Home.

FCC Warning

Changes or modifications not expressly approved by the party responsible for compliance could void the user's authority to operate the equipment.

This device complies with part 15 of the FCC Rules.

Operation is subject to the following two conditions:

1. This device may not cause harmful interference, and
2. this device must accept any interference received, including interference that may cause undesired operation.

FCC Radiation Exposure Statement:

This equipment complies with FCC radiation exposure limits set forth for an uncontrolled environment. This equipment should be installed and operated with a minimum distance of 20cm between the radiator & your body.

This transmitter must not be co located or operating in conjunction with any other antenna or transmitter

Note:

This equipment has been tested and found to comply with the limits for a Class B digital device, pursuant to part 15 of the FCC Rules. These limits are designed to provide reasonable protection against harmful interference in a residential installation. This equipment generates, uses, and can radiate radio frequency energy and, if not installed and used in accordance with the instructions, may cause harmful interference to radio communications. However, there is no guarantee that interference will not occur in a particular installation. If this equipment does cause harmful interference to radio or television reception, which can be determined by turning the equipment off and on, the user is encouraged to try to correct the interference by one or more of the following measures

- Reorient or relocate the receiving antenna.
- Increase the separation between the equipment and receiver
- Connect the equipment into an outlet on a circuit different from that to which the receiver is connected.
- Consult the dealer or an experienced radio/TV technician for help

Hereby, Shenzhen SonoffTechnologies Co.,

Ltd. declares that the radio equipment type BASICR2/RFR2 is in compliance with Directive 2014/53/EU.

The full text of the EU declaration of conformity is available at the following internet address:

<https://www.sonoff.tech/usermanuals>

TX Frequency:

- WiFi: 2412-2472MHz

RX Frequency:

- WiFi: 2412-2472MHz
- SRD: 433.92MHz (RFR2)

Output Power:

- 14.43dBm(802.11 b),
- 11.94dBm(802.11g),
- 11.96dBm(802.11 n20)



Shenzhen SonoffTechnologies Co., Ltd.

1001, BLDG8, Lianhua Industrial Park, shenzhen,
GD, China



ZIP code: 518000

Website: [sonoff.tech](https://www.sonoff.tech)

MADE IN CHINA



Documents / Resources

	<p>SONOFF BASICR2 Wi-Fi Smart Switch [pdf] Installation Guide BASICR2, Wi-Fi Smart Switch</p>
	<p>SONOFF BASICR2 Wi-Fi Smart Switch [pdf] Instruction Manual BASICR2, Wi-Fi Smart Switch, BASICR2 Wi-Fi Smart Switch, Smart Switch, Switch</p>