



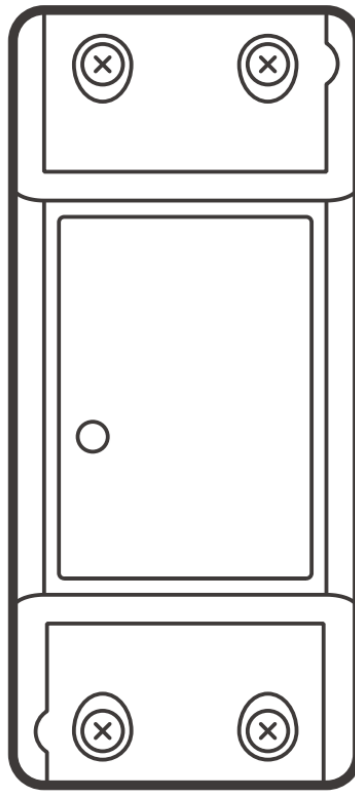
SONOFF BASIC-RC Wifi Smart Switch User Guide

[Home](#) » [SonOFF](#) » SONOFF BASIC-RC Wifi Smart Switch User Guide 



BASIC/RF
Quick Guide v 1.4



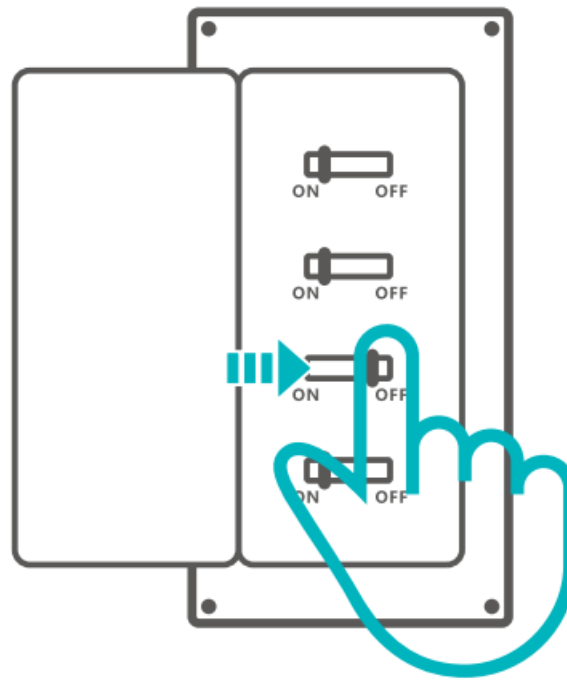



Wi-Fi Smart Switch

Contents

- [1 Power off](#)
- [2 Wiring instruction](#)
- [3 Download the eWeLink App](#)
- [4 Add device](#)
- [5 FCC compliance statement](#)
- [6 Documents / Resources](#)

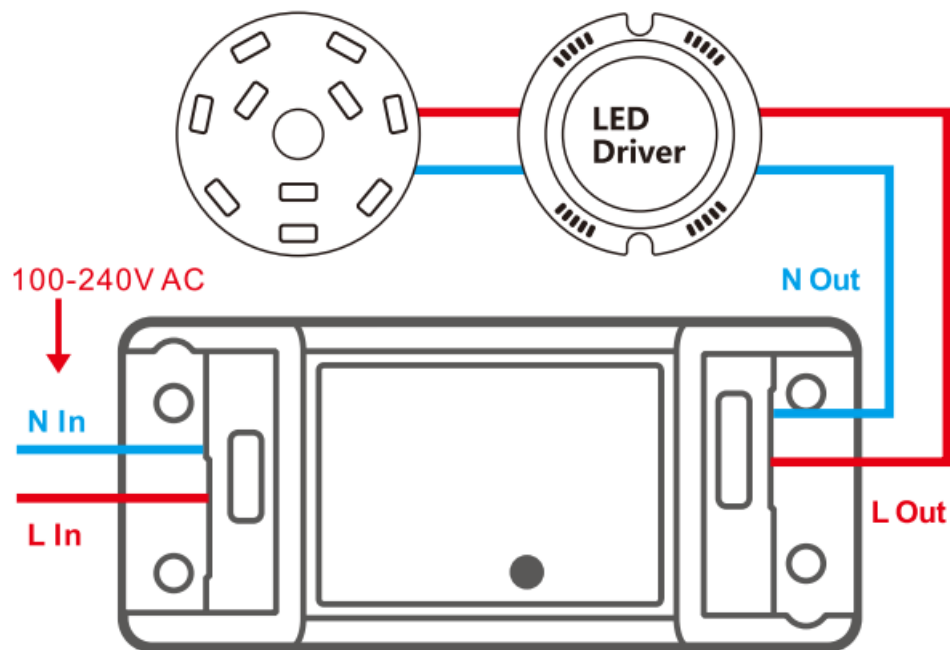
Power off



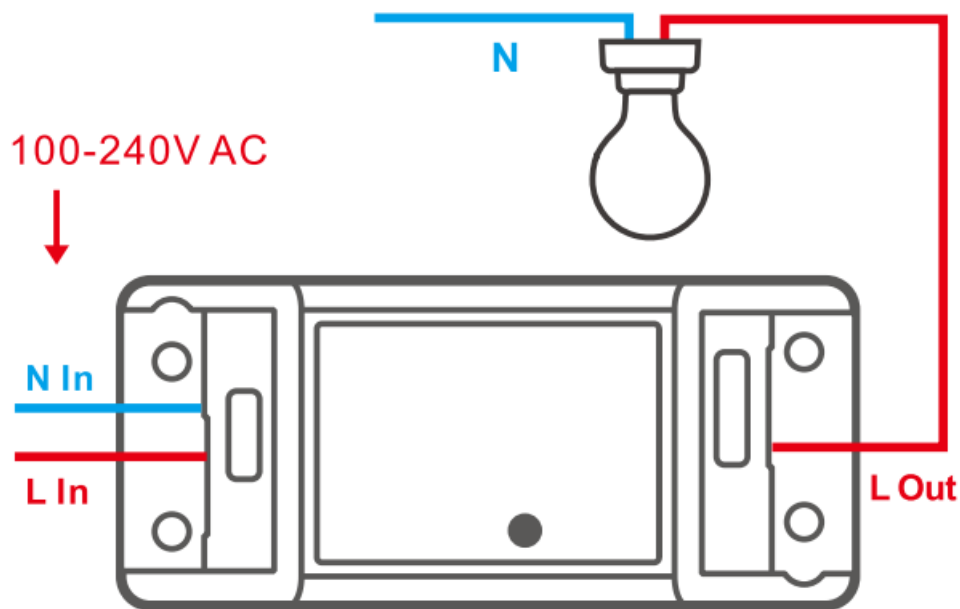
 To avoid electric shocks, please consult the dealer or a qualified professional for help when installing and repairing. Please do not touch the switch during use.

Wiring instruction

Ceiling lamp wiring instruction



Light fixture wiring instruction

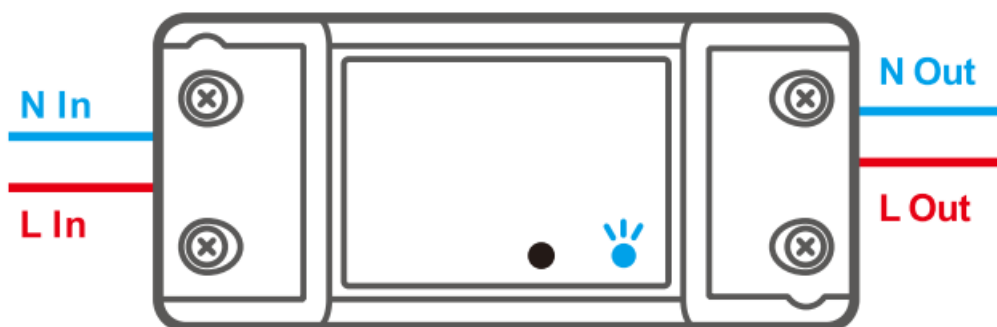


ⓘ Make sure all wires are connected correctly.

Download the eWeLink App



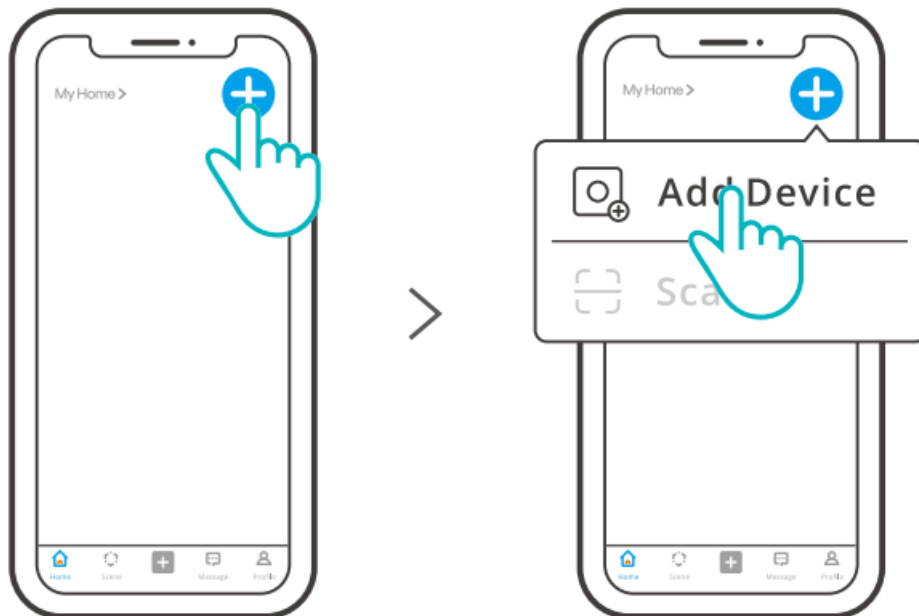
Power on



After powering on, the device will enter the Pairing Mode during the first use. The Wi-Fi LED indicator changes in a cycle of two short and one long flash and release.

ⓘ The device will exit the Pairing Mode if not paired within 3mins. If you want to enter this mode, please long press button for about 5s until the Wi-Fi LED indicator changes in a cycle of two short and one long flash and release.

Add device



Tap “+” and select “Add Device”, then operate following the prompt on the App.

User Manual



<https://sonoff.tech/usermanuals>

Scan the QR code or visit the website to learn about the detailed user manual and help.

FCC compliance statement

1.This device complies with part 15 of the FCC Rules. Operation is subject to the following two conditions: (1)This device may not cause harmful interference, and (2) This device must accept any interference received, including interference that may cause undesired operation. 2.Changes or modifications not expressly approved by the party responsible for compliance could void the user’s authority to operate the equipment.

Note: This equipment has been tested and found to comply with the limits for a Class B digital device, pursuant to part 15 of the FCC Rules. These limits are designed to provide reasonable protection against harmful interference in a residential installation. This equipment generates, uses and can radiate radio frequency energy and, if not installed and used in accordance with the instructions, may cause harmful interference to radio communications. However, there is no guarantee that interference will not occur in a particular installation. If this equipment does cause harmful Interference to radio or television reception, which can be determined by turning the equipment off and on, the user is encouraged to try to correct the interference by one or more of the following measures:

- Reorient or relocate the receiving antenna.

- Increase the separation between the equipment and receiver.
- Connect the equipment into an outlet on a circuit different from that to which the receiver is connected.
- Consult the dealer or an experienced radio/TV technician for help.

FCC Radiation Exposure statement: This equipment complies with FCC radiation exposure limits set forth for an uncontrolled environment. This equipment should be installed and operated with minimum distance of 20 cm between the radiator and your body. This transmitter must not be co-located or operating in conjunction with any other antenna or transmitter.

ISED Notice

This device contains licence-exempt transmitter(s)/receiver(s) that comply with Innovation, Science and Economic Development Canada's licence-exempt RSS(s). Operation is subject to the following two conditions: (1) This device may not cause interference. (2) This device must accept any interference, including interference that may cause undesired operation of the device. This Class B digital apparatus complies with Canadian ICES-003(B). This device complies with RSS-247 of Industry Canada. Operation is subject to the condition that this device does not cause harmful interference.

ISED Radiation Exposure Statement

This equipment complies with ISED radiation exposure limits set forth for an uncontrolled environment.

This equipment should be installed and operated with minimum distance of 20 cm between the radiator and your body. This transmitter must not be co-located or operating in conjunction with any other antenna or transmitter.

Scatola	Manuale
PAP 21	PAP 22
Carta	Carta
RACCO LTA	

SAR Warning

Under normal use of condition, this equipment should be kept a separation distance of at least 20 cm between the antenna and the body of the user.

EU Declaration of Conformity

Hereby, Shenzhen Sonoff Technologies Co., Ltd. declares that the radio equipment type BASICR2/RFR2 is in compliance with Directive 2014/53/EU. The full text of the EU declaration of conformity is available at the following Internet address: <https://www.sonoff.tech/usermanuals>

For CE Frequency:

Operation frequency Range:

Wi-Fi: 2412-2472MHz

SRD: 433.92MHz (RFR2, Receive Only)

RF Output Power:

14.43dBm(802.11b), 11.94dBm(802.11g),

11.96dBm(802.11n20)(Wi-Fi)

WEEE Disposal and Recycling Information



All products bearing this symbol are waste electrical and electronic equipment (WEEE as in directive 2012/19/EU) which should not be mixed with unsorted household waste. Instead, you should protect human health and the environment by handing over your waste equipment to a designated collection point for the recycling of waste electrical and electronic equipment, appointed by the government or local authorities. Correct disposal and recycling will help prevent potential negative consequences to the environment and human health. Please contact the installer or local authorities for more information about the location as well as terms and conditions of such collection points.

Shenzhen Sonoff Technologies Co., Ltd.

3F & 6F, Bldg A, No. 663, Bulong Rd, Shenzhen, Guangdong, China



To ensure the safety of your electrical installation, it's essential either a Miniature Circuit Breaker (MCB) or a Residual Current Operated Circuit Breaker (RCBO) with an electrical rating of 10A has been installed before the device.

Documents / Resources



[SONOFF BASIC-RC Wifi Smart Switch](#) [pdf] User Guide
BASIC-RC Wifi Smart Switch, BASIC-RC, Wifi Smart Switch, Smart Switch, Switch