



# SONOFF B02-F Smart WiFi LED Filament Bulb User Manual

[Home](#) » [SonOFF](#) » SONOFF B02-F Smart WiFi LED Filament Bulb User Manual 

## Contents

### [1 SONOFF LBS B02-F WiFi Smart LED Filament Bulb User Manual](#)

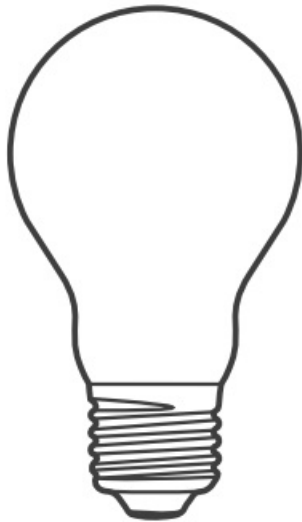
- [1.1 Operating Instruction](#)
- [1.2 Compatible Pairing Mode](#)
- [1.3 Usage of being an ordinary bulb](#)
- [1.4 Specifications](#)
- [1.5 Product Introduction](#)
- [1.6 Features](#)
- [1.7 Factory Reset](#)
- [1.8 Common Problems](#)
- [1.9 FCC Warning](#)

### [2 Documents / Resources](#)

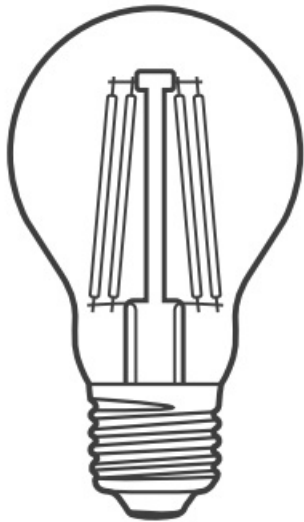
### [3 Related Posts](#)

## SONOFF LBS B02-F WiFi Smart LED Filament Bulb User Manual

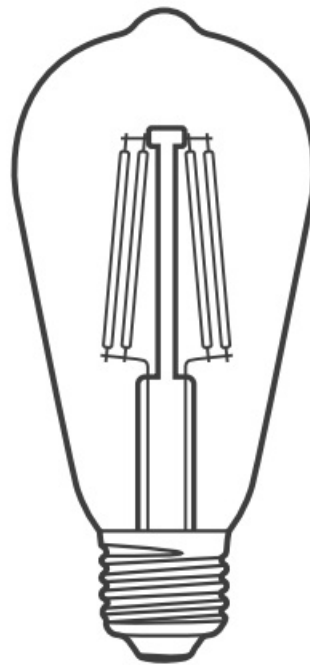




B02-F-A19(Creamy-white)



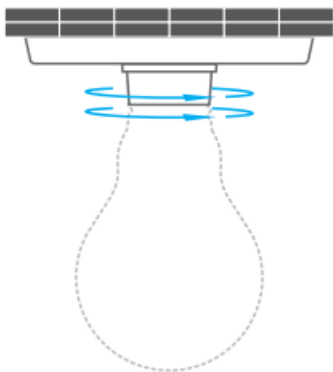
B02-F-A60(Cyan)



B02-F-ST64(Amber)

## Operating Instruction

### 1. Install the device



To avoid electric shock, please turn off the power before installing the device.

### 2. Download APP



Android™ & iOS

### 3. Power on



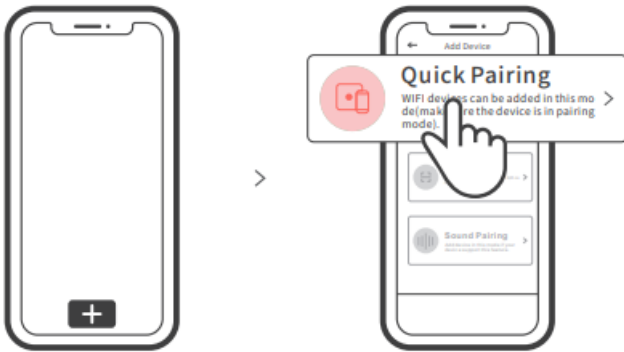
After powering on, the device will enter the quick pairing mode (Touch) during the first use. The device enters

the “breathing mode”.

⚠ The device will exit the quick pairing mode (Touch) if not paired within 3mins. If you want to enter this mode, please press the manual switch three times repeatedly at an interval of every 1s (Off-ON-Off-ON-Off-ON). The “breathing mode” indicates the light enters quick pairing mode.



#### 4. Add the device



Tap “+” and select “ Quick Pairing ”, then operate following the prompt on the app.

### Compatible Pairing Mode

If you fail to enter Quick Pairing Mode (Touch), please try “Compatible Pairing Mode ” to pair.

1. Press the light switch 5 times repeatedly at an interval of every 1s (Off-ON-Off-ON- Off-ON-Off-ON-Off-ON) when the light is on. The “quick flash” indicates the device enters the compatible pairing mode.
2. Tap “+” and select “ Compatible Pairing Mode ” on APP.  
Select Wi-Fi SSID with ITEAD-\*\*\*\*\* and enter the password 12345678, and then go back to eWeLink APP and tap “Next”. Be patient until pairing completes.

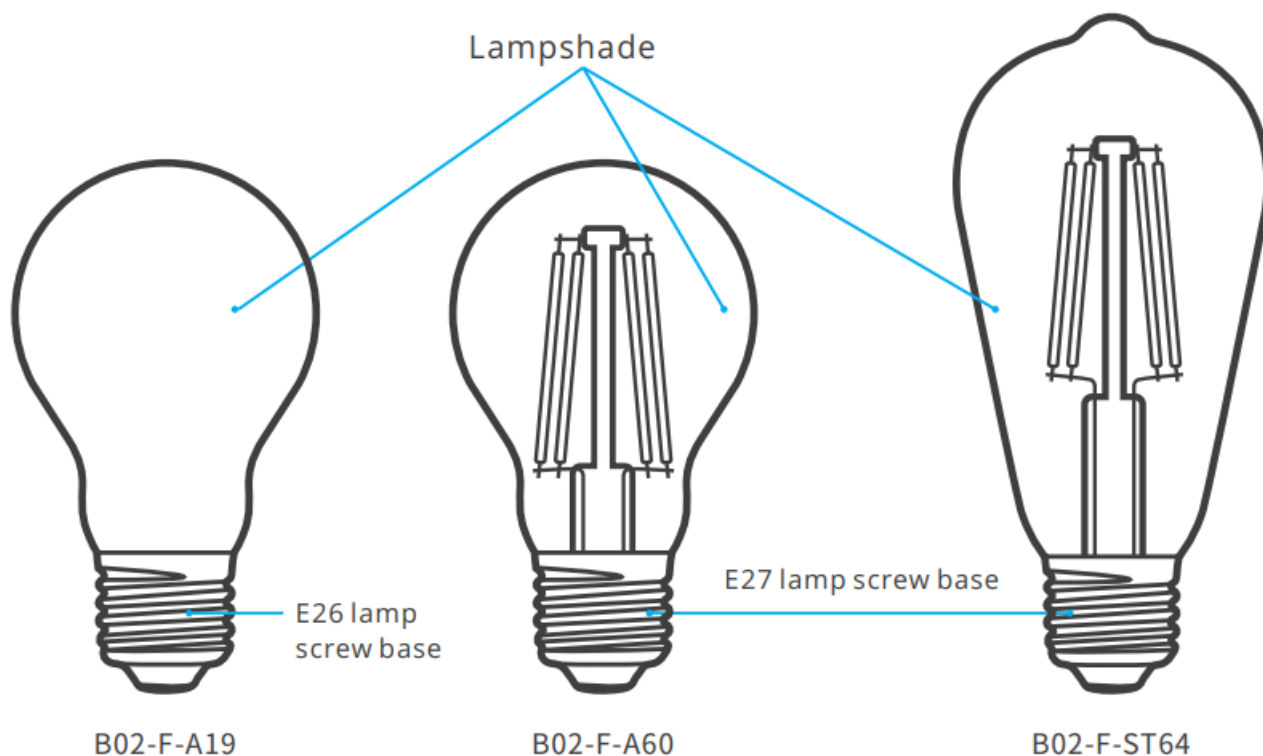
### Usage of being an ordinary bulb

Power on the bulb, it will enter quick pairing mode (The bulb change from bright to dim and cycle the mode), after 10s, if power off, it will go solid and keep warm light at the highest brightness.

### Specifications

Model	B02-F-A19, B02-F-A60, B02-F-ST64
Input	B02-F-A19: 120V AC 60Hz B02-F-A60, B02-F-ST64: 220-240V AC 50Hz
Luminous Flux	B02-F-A19: 720Lm B02-F-A60: 806Lm B02-F-ST64: 700Lm
Color temperature	B02-F-A19: 2700K-5000K, B02-F-A60: 2200K-6500K B02-F-ST64: 1800K-5000K
Rated power	B02-F-A19: 7.5W B02-F-A60, B02-F-ST64: 7W
Lamp base	B02-F-A19: E26 B02-F-A60, B02-F-ST64: E27
CRI	≥Ra80
Life Expectancy	15000h
Wi-Fi	IEEE 802.11 b/g/n 2.4GHz
Operating systems	Android & iOS
Dimension	B02-F-A19: 60x110mm B02-F-A60: 60x104mm B02-F-ST64: 64x138mm

## Product Introduction



## Features

SONOFF LED is a LED smart bulb that allows users to adjust the brightness and color, and remotely turn on/off the connected devices via your smartphone, schedule it on/off and share it to your family to control together.



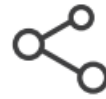
Remote Control



Single/Countdown  
Timing



Voice Control



Share Control



Smart scene



Sync Status



Stepless dimming



Scene Mode



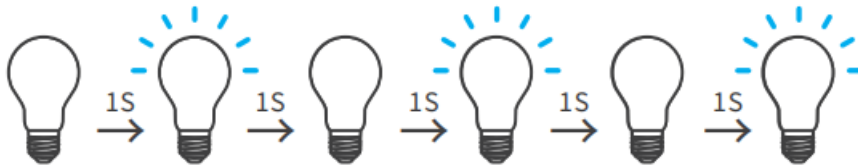
Camera Feature



Group control

## Factory Reset

Press the light switch 3 times repeatedly at an interval of every 1s (Off-ON-Off-ONOff-ON) when the light is on. The “breathing mode” indicates the device enters the quick pairing mode (Touch).



Please reset the device to factory defaults if you want to use other Wi-Fi networks, then reconnect the network.

## Common Problems

### Why my device stays “Offline”?

1. Maybe you have entered a wrong Wi-Fi password.
2. Maybe there's too much distance between the switch your router or the environment causes interference, consider getting close to the router. If failed, please add it again.
3. The 5G Wi-Fi network is not supported and only supports the 2.4GHz wireless network.
4. Maybe the MAC address filtering is open. Please turn it off.

**If none of the above methods solved the problem, you can open the mobile datanetwork on your phone to create a Wi-Fi hotspot, then add the device again.**

## FCC Warning

Changes or modifications not expressly approved by the party responsible for compliance could avoid the user's authority to operate the equipment.

This device complies with part 15 of the FCC Rules. Operation is subject to the following two conditions: (1) This device may not cause harmful interference, and (2) this device must accept any interference received, including interference that may cause undesired operation.

## FCC Radiation Exposure Statement:

This equipment complies with FCC radiation exposure limits set forth for an uncontrolled environment. This

equipment should be installed and operated with minimum distance 20cm between the radiator & your body. This transmitter must not be co-located or operating in conjunction with any other antenna or transmitter.

**Note:**

This equipment has been tested and found to comply with the limits for a Class B digital device, pursuant to part 15 of the FCC Rules. These limits are designed to provide reasonable protection against harmful interference in a residential installation. This equipment generates, uses and can radiate radio frequency energy and, if not installed and used in accordance with the instructions, may cause harmful interference to radio communications. However, there is no guarantee that interference will not occur in a particular installation. If this equipment does cause harmful interference to radio or television reception, which can be determined by turning the equipment off and on, the user is encouraged to try to correct the interference by one or more of the following measures:

- Reorient or relocate the receiving antenna.
- Increase the separation between the equipment and receiver.
- Connect the equipment into an outlet on a circuit different from that to which the receiver is connected.
- Consult the dealer or an experienced radio/TV technician for help.

Hereby, Shenzhen Sonoff Technologies Co., Ltd. declares that the radio equipment type B02-F-A19, B02-F-A60, B02-F-ST64 is in compliance with Directive 2014/53/EU. The full text of the EU declaration of conformity is available at the following internet address:

<https://sonoff.tech/usermanuals>



**Shenzhen Sonoff Technologies Co., Ltd.**

1001, BLDG8, Lianhua Industrial Park, shenzhen, GD, China

ZIP code: 518000

Website: sonoff.tech

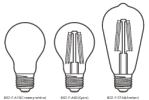
MADE IN CHINA



**Documents / Resources**



**LBS B02-F**  
User manual V1.1



### Wi-Fi Smart LED Filament Bulb

中文 .....	1-4	English .....	5-8
Deutsch .....	9-12	Español .....	13-16
Français .....	17-20	Italiano .....	21-24
Fynskel saas .....	25-28	Português .....	29-32
FCC Warning .....	33		

[SONOFF B02-F Smart WiFi LED Filament Bulb](#) [pdf] User Manual