



## SONOFF B02-F LBS Wi-Fi Smart LED Filament Bulb User Manual

[Home](#) » [SonOFF](#) » SONOFF B02-F LBS Wi-Fi Smart LED Filament Bulb User Manual 

### SONOFF B02-F LBS Wi-Fi Smart LED Filament Bulb



## Contents

### 1 Operating Instruction

#### 1.1 Install the device

#### 1.2 Download APP

#### 1.3 Power on

#### 1.4 Add the device

### 2 Compatible Pairing Mode

### 3 Usage of being an ordinary bulb

### 4 Specifications

### 5 Product Introduction

### 6 Features

### 7 Factory Reset

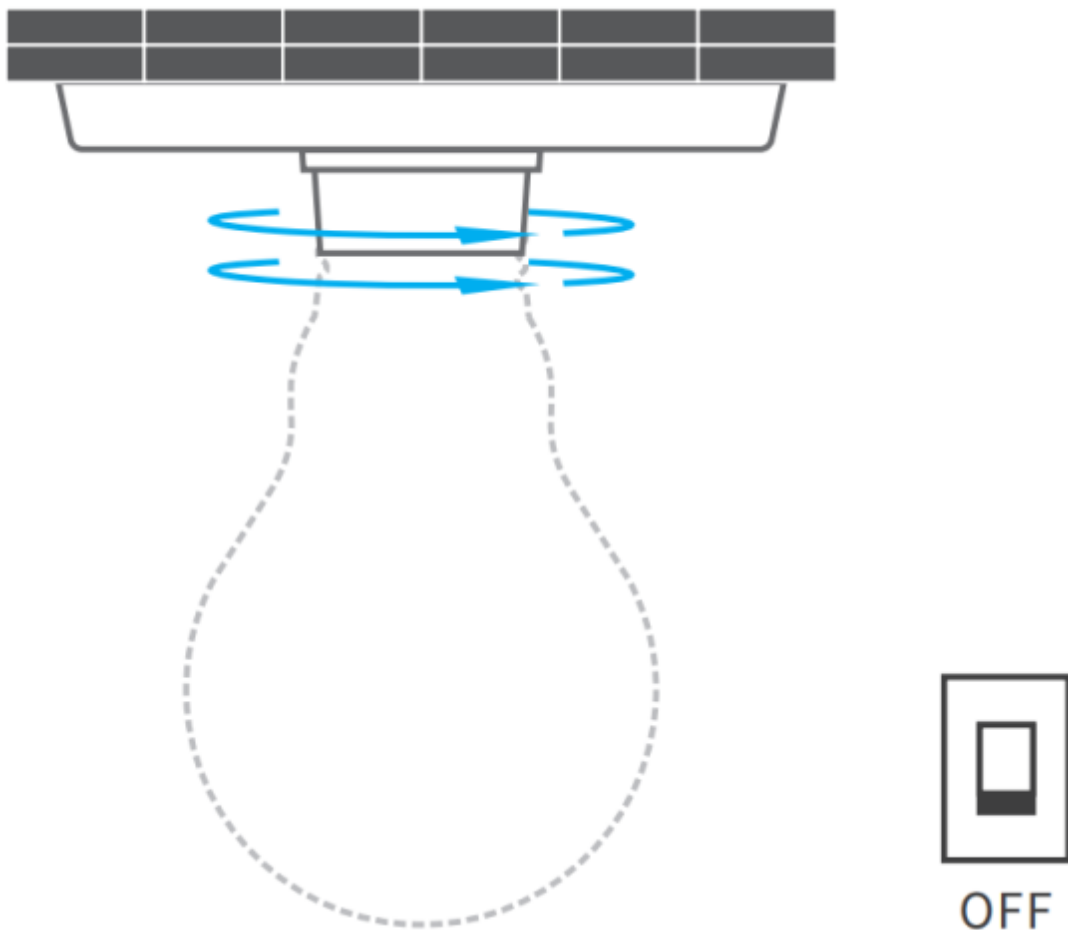
### 8 Common Problems

### 9 Documents / Resources

### 10 Related Posts

## Operating Instruction

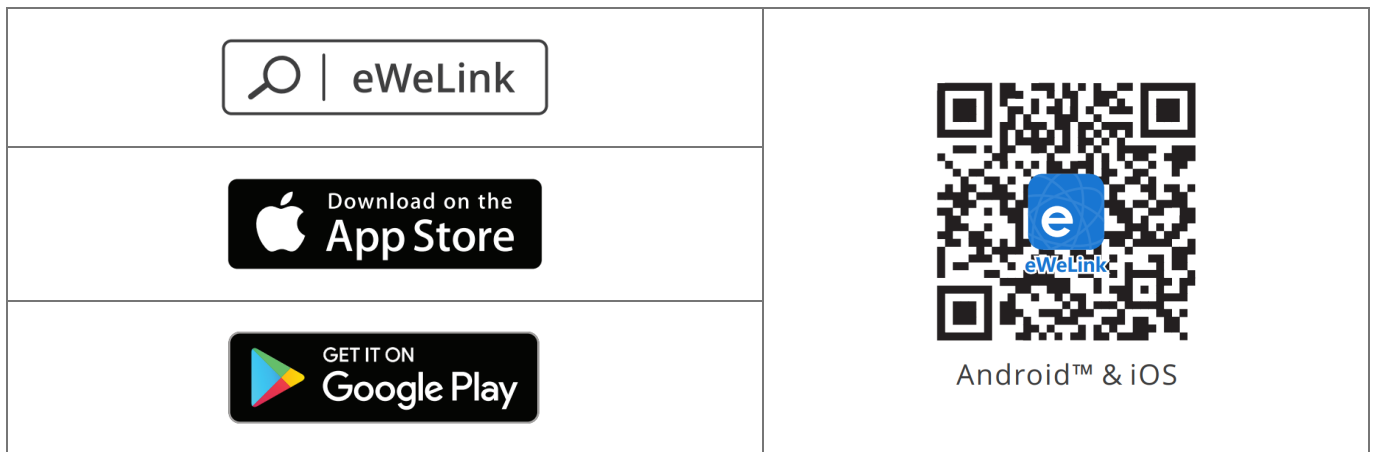
### Install the device



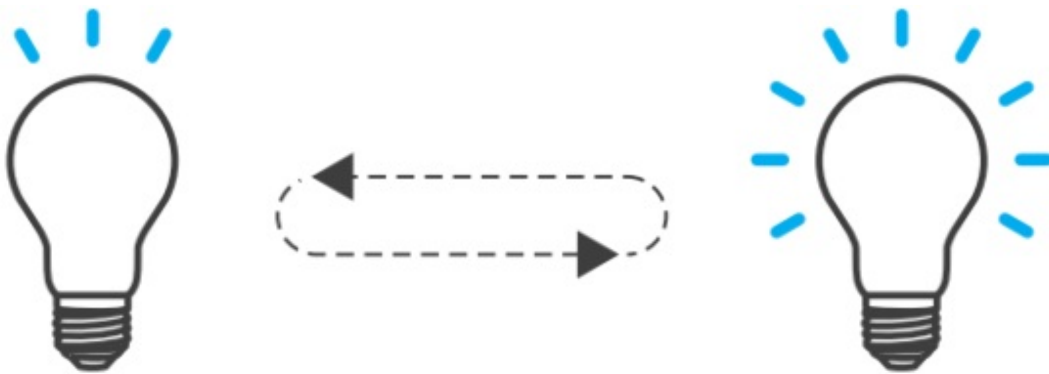
⚠ To avoid electric shock, please turn off the power before installing the device.

⚠ The device works under 220-240V AC only.

### Download APP



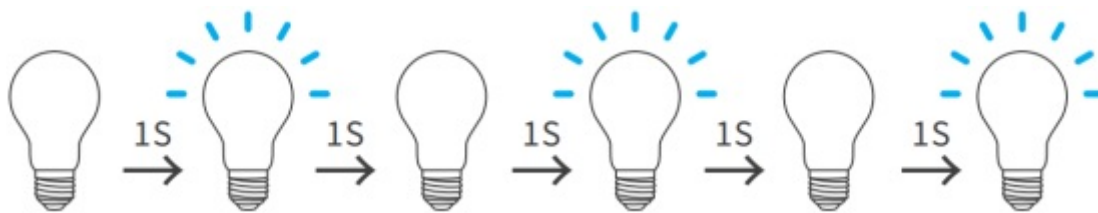
#### Power on



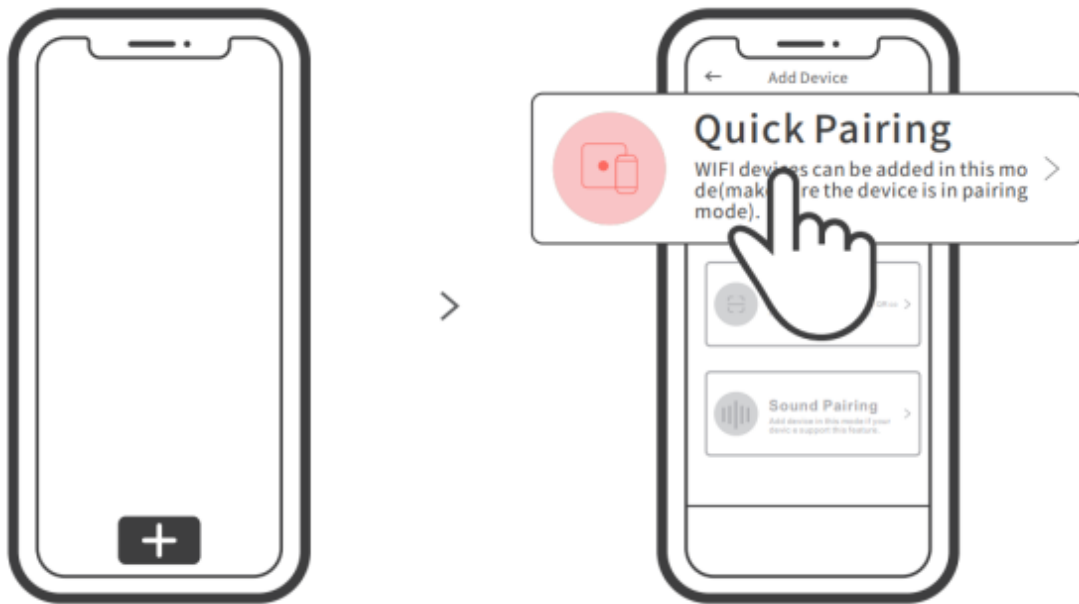
After powering on, the device will enter the quick pairing mode (Touch) during the first use. The device enters the “breathing mode”.



The device will exit the quick pairing mode (Touch) if not paired within 3mins. If you want to enter this mode, please press the manual switch three times repeatedly at an interval of every 1s (Off-ON-Off-ON-Off-ON). The “breathing mode” indicates the light enters quick pairing mode.



#### Add the device



Tap “+” and select “ Quick Pairing ”, then operate following the prompt on the app.

### **Compatible Pairing Mode**

If you fail to enter Quick Pairing Mode (Touch), please try “Compatible Pairing Mode ” to pair.

1. Press the light switch 5 times repeatedly at an interval of every 1s (Off-ON-Off-ON-Off-ON-Off-ON-Off-ON) when the light is on. The “quick flash” indicates the device enters the compatible pairing mode.
2. Tap “+” and select “ Compatible Pairing Mode ” on APP.  
Select Wi-Fi SSID with ITEAD-\*\*\*\*\* and enter the password 12345678, and then go back to eWeLink APP and tap “Next”. Be patient until pairing completes.

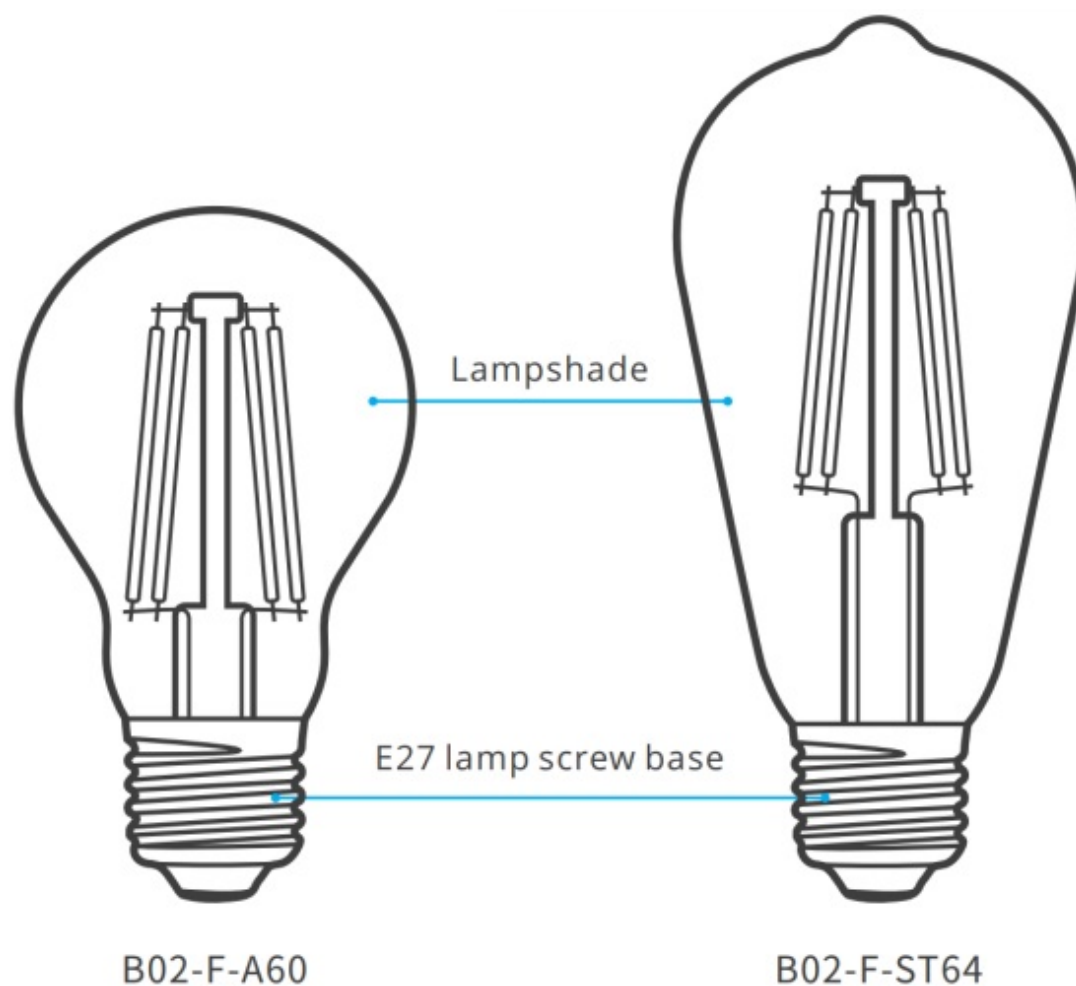
### **Usage of being an ordinary bulb**

Power on the bulb, it will enter quick pairing mode (The bulb change from bright to dim and cycle the mode), after 10s, if power off, it will go solid and keep warm light at the highest brightness.

### **Specifications**

Model	B02-F-A60/B02-F-ST64
Input	220-240V AC 50Hz
Luminous Flux	B02-F-A60: 806Lm / B02-F-ST64: 700Lm
Color temperature	B02-F-A60: 2200K-6500K / B02-F-ST64: 1800K-5000K
Rated power	7W
Lamp base	E27
CRI	≥Ra80
Life Expectancy	15000h
Wi-Fi	IEEE 802.11 b/g/n 2.4GHz
Operating systems	Android & iOS
Dimension	B02-F-A60: 60x104mm / B02-F-ST64: 64x138mm
Weight	B02-F-A60: 35g / B02-F-ST64: 50g

## Product Introduction



## Features

SONOFF LED is a LED smart bulb that allows users to adjust the brightness and color, and remotely turn on/off the connected devices via your smartphone, schedule it on/off and share it to your family to control together.



Remote Control



Single/Countdown  
Timing



Sync Status



Stepless dimming



Voice Control



Share Control



Scene Mode



Camera Feature



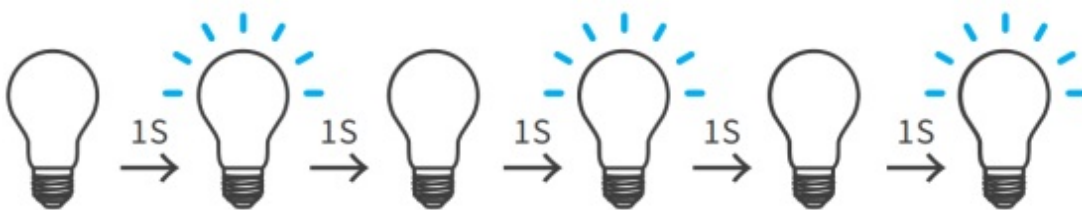
## Smart scene



## Group control

### Factory Reset

Press the light switch 3 times repeatedly at an interval of every 1s (Off-ON-Off-ONOff-ON) when the light is on. The “breathing mode” indicates the device enters the quick pairing mode (Touch).



Please reset the device to factory defaults if you want to use other Wi-Fi networks, then reconnect the network.

### Common Problems

#### Why my device stays “Offline”?

- ① Maybe you have entered a wrong Wi-Fi password.
- ② Maybe there's too much distance between the switch your router or the environment causes interference, consider getting close to the router. If failed, please add it again.
- ③ The 5G Wi-Fi network is not supported and only supports the 2.4GHz wireless network.
- ④ Maybe the MAC address filtering is open. Please turn it off.

If none of the above methods solved the problem, you can open the mobile data network on your phone to create a Wi-Fi hotspot, then add the device again.

Shenzhen Sonoff Technologies Co., Ltd.



1001, BLDG8, Lianhua Industrial Park, shenzhen, GD, China  
ZIP code: 518000  
Website: [sonoff.tech](http://sonoff.tech)



Documents / Resources

EN	2	1-4
FR	2	1-4
DE	2	1-4
ES	2	1-4
PT	2	1-4
IT	2	1-4
RU	2	1-4
PL	2	1-4
UK	2	1-4
US	2	1-4
JP	2	1-4
IN	2	1-4
BR	2	1-4
MX	2	1-4
AR	2	1-4
CL	2	1-4
CO	2	1-4
PE	2	1-4
VE	2	1-4
EC	2	1-4
GT	2	1-4
HN	2	1-4
DO	2	1-4
CU	2	1-4
VE	2	1-4
EC	2	1-4
GT	2	1-4
HN	2	1-4
DO	2	1-4
CU	2	1-4

**[SONOFF B02-F LBS Wi-Fi Smart LED Filament Bulb](#)** [pdf] User Manual

B02-F, LBS Wi-Fi Smart LED Filament Bulb

[Manuals+](#)