



SONOFF B02-F-A60 WiFi Smart LED Bulb Instruction Manual

[Home](#) » [SonOFF](#) » SONOFF B02-F-A60 WiFi Smart LED Bulb Instruction Manual 

Contents

- [1 SONOFF B02-F-A60 WiFi Smart LED Bulb](#)
- [2 Product Information: SONOFF LED Smart Bulb](#)
- [3 Features](#)
- [4 Operating Instruction](#)
- [5 Usage of being an ordinary bulb](#)
- [6 Specifications](#)
- [7 Product Introduction](#)
- [8 Features](#)
- [9 Factory Reset](#)
- [10 Common Problems](#)
- [11 Documents / Resources](#)



SONOFF B02-F-A60 WiFi Smart LED Bulb



Product Information: SONOFF LED Smart Bulb

The SONOFF LED Smart Bulb is a LED bulb that allows users to remotely control and adjust the brightness and color through a smartphone app. It works under 220-240V AC only and has a rated power of 7W. The bulb has a lamp screw base of E27 and comes in two models – B02-F-A60 and B02-F-ST64, with different dimensions and weights. It supports IEEE 802.11 b/g/n 2.4GHz Wi-Fi and is compatible with Android and iOS operating systems. The bulb has a CRI of 80 and a life expectancy of up to 15000 hours.

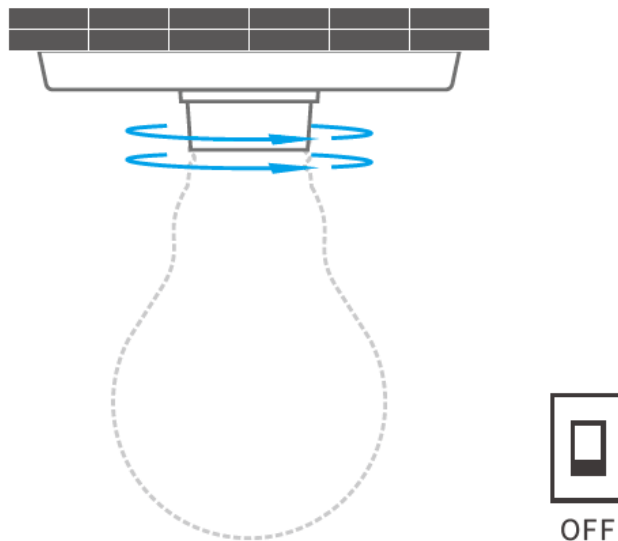
Features

- Remote Control
- Single/Countdown Timing
- Voice Control
- Share Control
- Smart Scene
- Sync Status
- Stepless Dimming
- Scene Mode
- Camera Feature
- Group Control
- Factory Reset

Operating Instruction

1. Install the device:

To avoid electric shock, turn off the power before installing the device. The device works under 220-240V AC only.



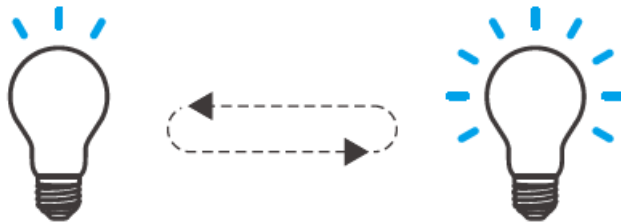
2. Download APP:

Download the eWeLink app to your Android™ or iOS device.

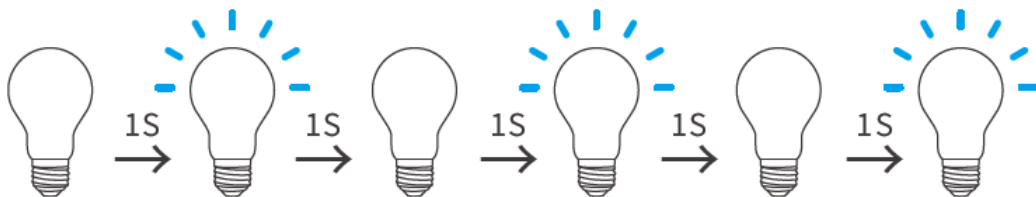


Android™ & iOS

3. Power on:

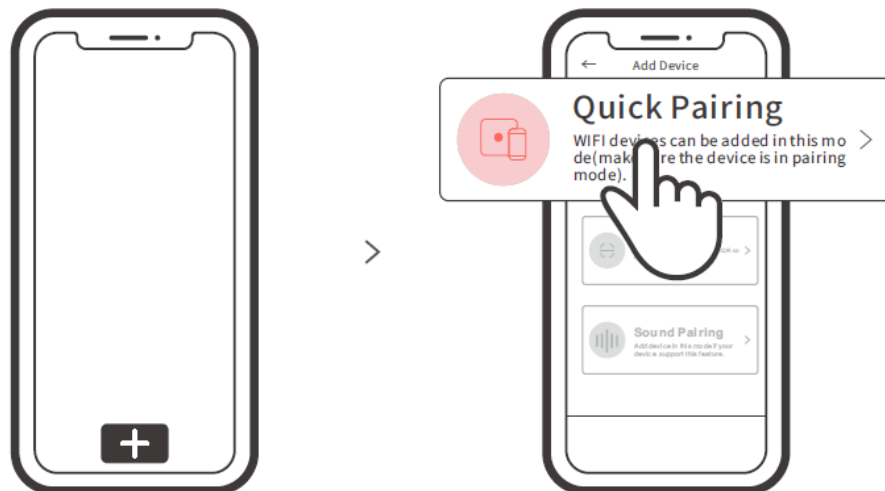


After powering on, the device will enter quick pairing mode (Touch) during the first use. The device enters the breathing mode. The device will exit the quick pairing mode (Touch) if not paired within 3mins. If you want to enter this mode, please press the manual switch three times repeatedly at an interval of every 1s (Off-ON-Off-ON-Off-ON). The breathing mode indicates the light enters quick pairing mode.



4. Add the device:

To add the device, tap + and select Quick Pairing, then operate following the prompt on the app. WIFI devices can be added in this mode (make sure the device is in pairing mode). GSM devices and devices with QR code can be added in this mode. Add device in this mode if your device supports this feature.



Compatible Pairing Mode:

If you fail to enter Quick Pairing Mode (Touch),

1. press the light switch 5 times repeatedly at an interval of every 1s (Off-ON-Off-ON-Off-ON-Off-ON-Off-ON) when the light is on. The quick flash indicates the device enters the compatible pairing mode.
2. Tap + and select Compatible Pairing Mode on APP. Select Wi-Fi SSID with ITEAD-***** and enter the password 12345678, and then go back to eWeLink APP and tap Next. Be patient until pairing completes.
3. **Usage:** Power on the bulb, it will enter quick pairing mode (The bulb change from bright to dim and cycle the mode), after 10s, if power off, it will go solid and keep warm light at the highest brightness.
4. **Factory Reset:** Press the light switch 3 times repeatedly at an interval of every 1s (Off-ON-Off-ON-Off-ON) when the light is on. The breathing mode indicates the device enters the quick pairing mode (Touch). Please reset the device to factory defaults if you want to use other Wi-Fi networks, then reconnect the network.

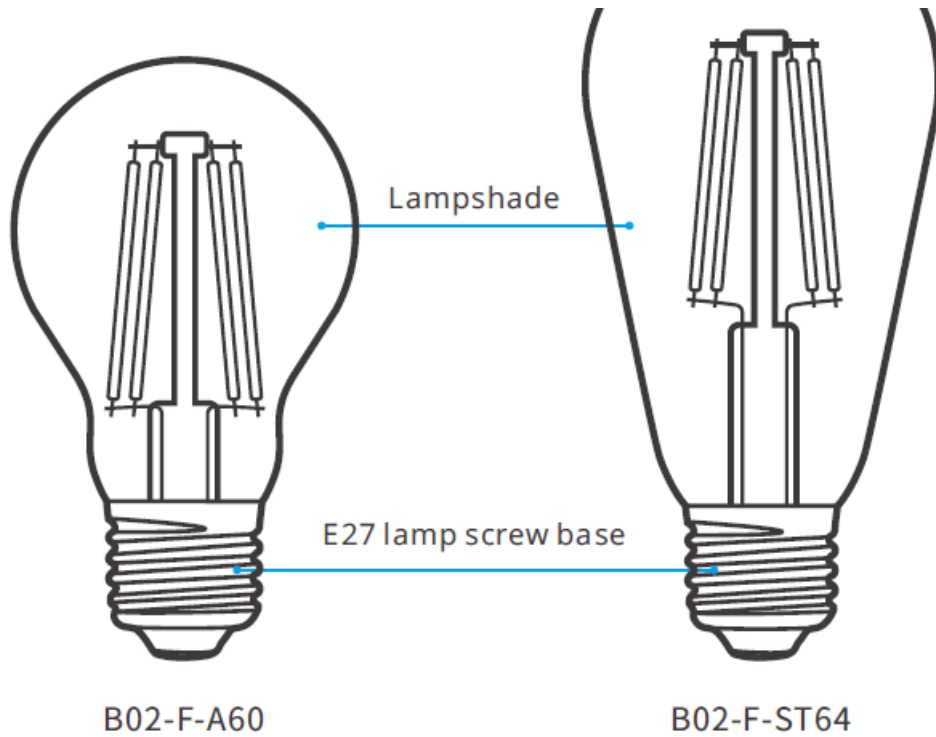
Usage of being an ordinary bulb

Power on the bulb, it will enter quick pairing mode (The bulb change from bright to dim and cycle the mode), after 10s, if power off, it will go solid and keep warm light at the highest brightness.

Specifications

Model	B02-F-A60/B02-F-ST64
Input	220-240V AC 50Hz
Luminous Flux	B02-F-A60: 806Lm / B02-F-ST64: 700Lm
Color temperature	B02-F-A60: 2200K-6500K / B02-F-ST64: 1800K-5000K
Rated power	7W
Lamp base	E27
CRI	≥Ra80
Life Expectancy	15000h
Wi-Fi	IEEE 802.11 b/g/n 2.4GHz
Operating systems	Android & iOS
Dimension	B02-F-A60: 60x104mm / B02-F-ST64: 64x138mm
Weight	B02-F-A60: 35g / B02-F-ST64: 50g

Product Introduction



Features

SONOFF LED is a LED smart bulb that allows users to adjust the brightness and color, and remotely turn on/off the connected devices via your smartphone, schedule it on/off and share it to your family to control together.



Remote Control



Single/Countdown
Timing



Voice Control



Share Control



Smart scene



Sync Status



Stepless dimming



Scene Mode



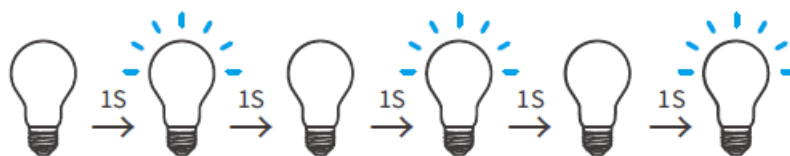
Camera Feature



Group control

Factory Reset

Press the light switch 3 times repeatedly at an interval of every 1s (Off-ON-Off-ON-Off-ON) when the light is on. The “breathing mode” indicates the device enters the quick pairing mode (Touch).



Please reset the device to factory defaults if you want to use other Wi-Fi networks, then reconnect the network.

Common Problems

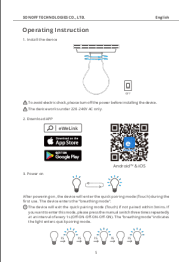
If your device stays offline, please check if the Wi-Fi signal is weak or the device is too far away from the router.

Also, check if the device has been added to the app and if the network connection is normal.

1. Maybe you have entered a wrong Wi-Fi password.
2. Maybe there's too much distance between the switch your router or the environment causes interference, consider getting close to the router. If failed, please add it again.
3. The 5G Wi-Fi network is not supported and only supports the 2.4GHz wireless network.
4. Maybe the MAC address filtering is open. Please turn it off.

If none of the above methods solved the problem, you can open the mobile data network on your phone to create a Wi-Fi hotspot, then add the device again.

Documents / Resources

	<p>SONOFF B02-F-A60 WiFi Smart LED Bulb [pdf] Instruction Manual B02-F-A60, B02-F-ST64, B02-F-A60 WiFi Smart LED Bulb, WiFi Smart LED Bulb, Smart LED Bulb, LED Bulb, Bulb</p>
---	--