



# SONOFF B02-B-A60 WiFi Smart LED Bulb Instruction Manual

[Home](#) » [SonOFF](#) » SONOFF B02-B-A60 WiFi Smart LED Bulb Instruction Manual 

## Contents

- [1 SONOFF B02-B-A60 WiFi Smart LED Bulb](#)
- [2 Operating Instruction](#)
- [3 Compatible Pairing Mode](#)
- [4 Usage of an ordinary bulb](#)
- [5 Specifications](#)
- [6 Product Introduction](#)
- [7 Features](#)
- [8 Factory Reset](#)
- [9 Common Problems](#)
- [10 Documents / Resources](#)

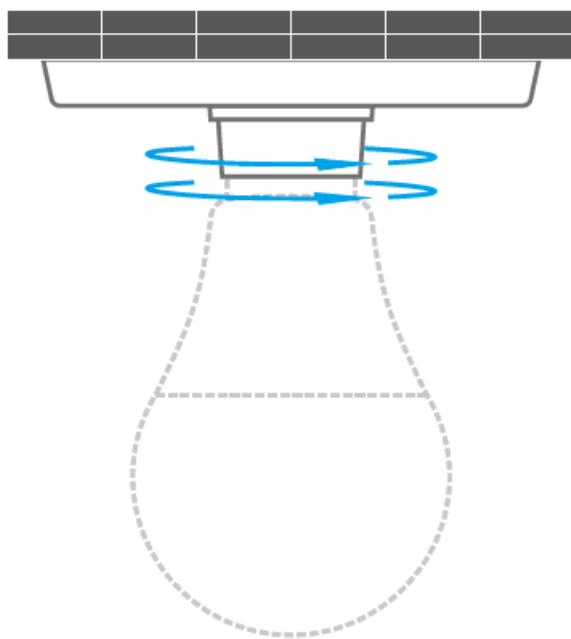


**SONOFF B02-B-A60 WiFi Smart LED Bulb**



## Operating Instruction

- Install the device

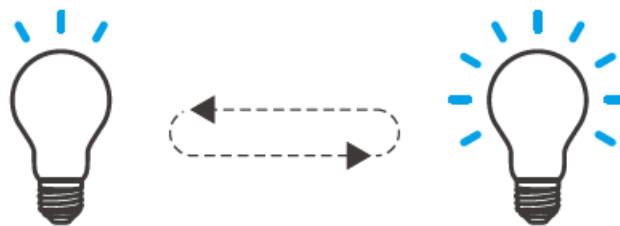


- To avoid electric shock, please turn off the power before installing the device.
- The device works under 220-240V AC only.
- Download APP

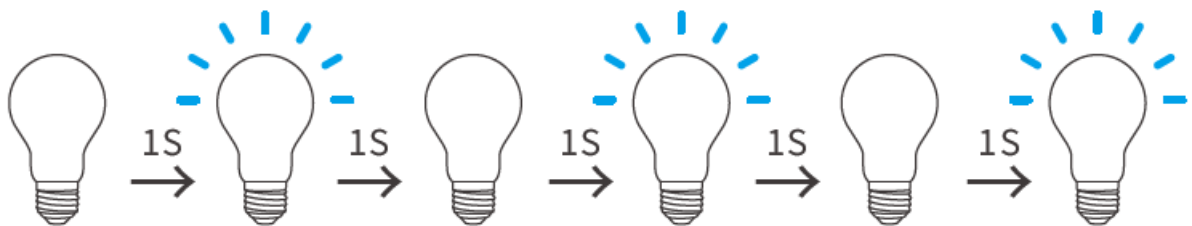


Android™ & iOS

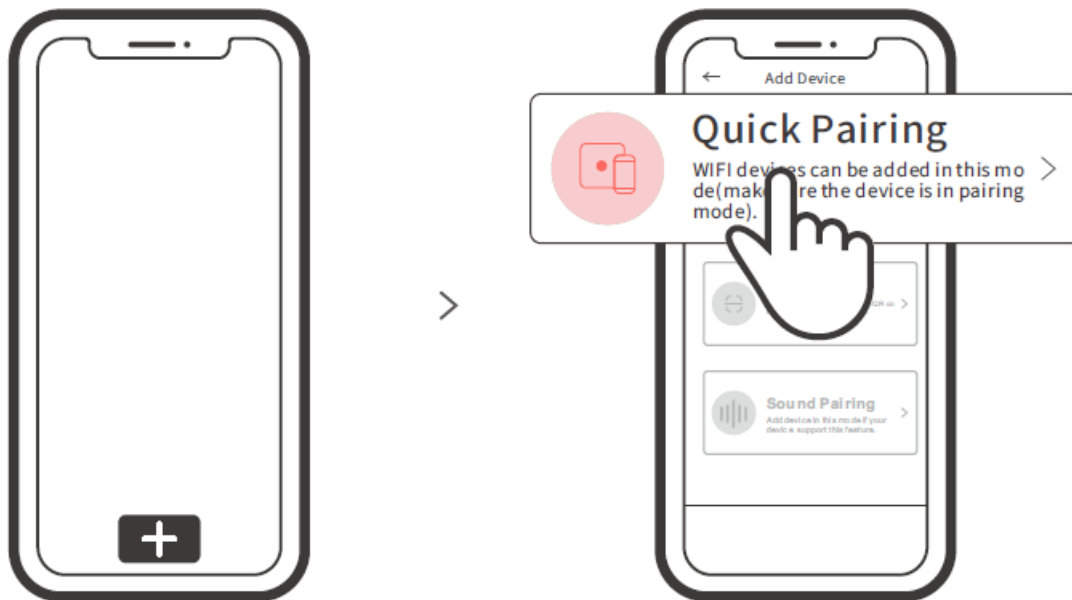
- Power on



- After powering on, the device will enter the quick pairing mode (Touch) during the first use. The device enters “breathing mode”.
- The device will exit the quick pairing mode (Touch) if not paired within 3mins. If you want to enter this mode, please press the manual switch three times repeatedly at an interval of every 1s (Off-ON-Off-ON-Off-ON). The “breathing mode” indicates the light enters quick pairing mode.



- Add the device



- Tap “+” and select “ Quick Pairing ”, then operate following the prompt on the app.

## Compatible Pairing Mode

If you fail to enter Quick Pairing Mode (Touch), please try “Compatible Pairing Mode ” to pair.

1. Press the light switch 5 times repeatedly at an interval of every 1s (Off-ON-Off-ON-Off- ON-Off-ON-Off-ON) when the light is on. The “quick flash” indicates the device enters the compatible pairing mode.
2. Tap “+” and select “ Compatible Pairing Mode ” on APP.

Select Wi-Fi SSID with ITEAD-\*\*\*\*\* and enter the password 12345678, and then go back to eWeLink APP and tap “Next”. Be patient until the pairing completes.

## Usage of an ordinary bulb

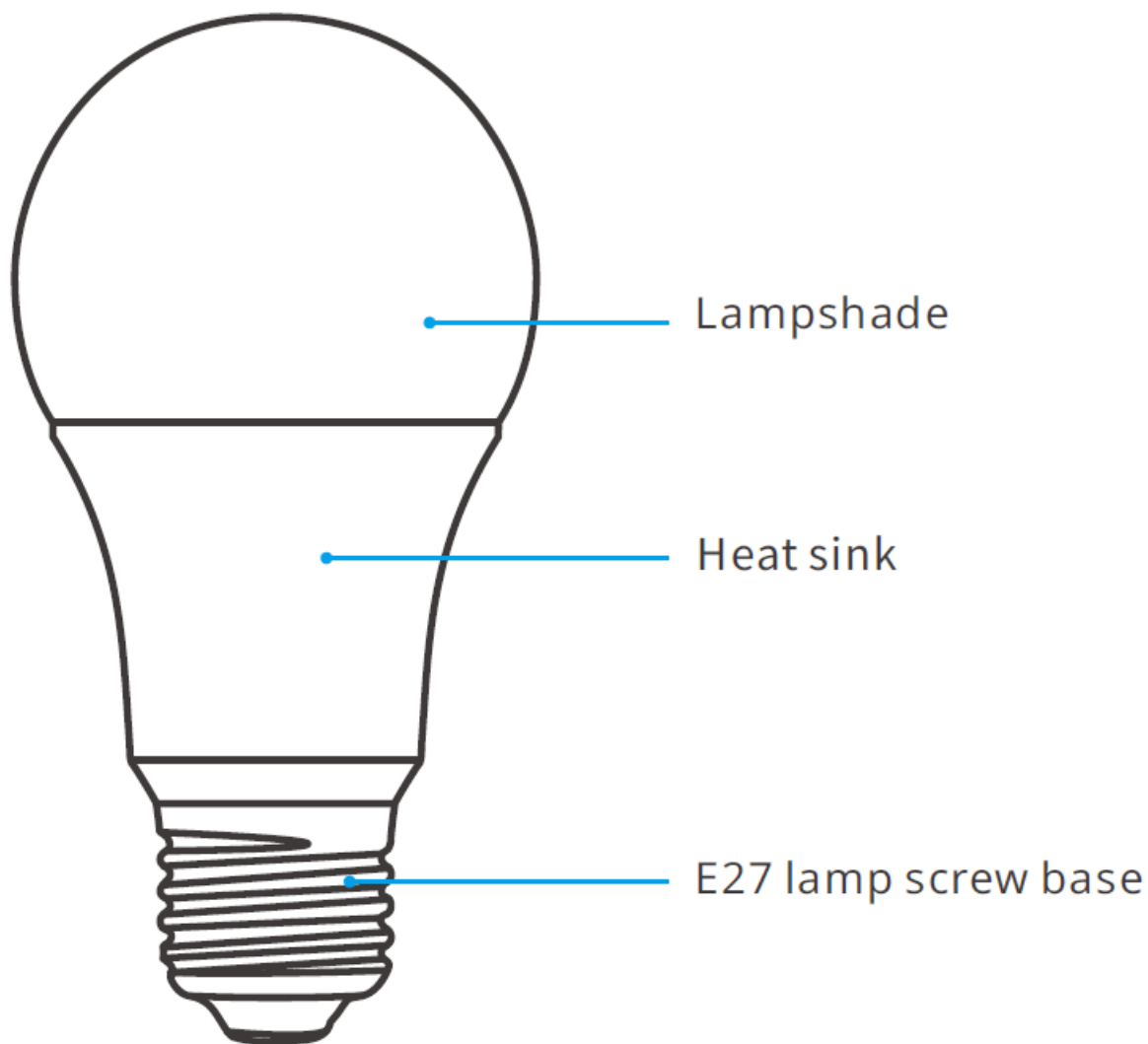
Power on the bulb, and it will enter quick pairing mode (The bulb change from bright to dim and cycles the mode), after 10s, if power off, it will go solid and keep warm light at the highest brightness.

## Specifications

Model	B02-B-A60/B05-B-A60
Input	220-240V AC 50Hz 806Lm
Luminous Flux	
Color temperature	2700K-6500K
Rated power	9W
Lamp base	E27
CRI	≥Ra80
Life Expectancy	10000h
Wi-Fi	IEEE 802.11 b/g/n 2.4GHz
Operating systems	Android & iOS
Dimension	60x118mm
Weight	B02-B-A60: 60g / B05-B-A60: 63g

- B02-B-A60 is a dual-color LED smart bulb. B05-B-A60 is an RGB LED smart bulb.

## Product Introduction



## Features

- SONOFF LED is a LED smart bulb that allows users to adjust the brightness and color, remotely turn on/off the connected devices via their smartphone, schedule it on/off, and share it with their family to control together.



Remote Control



Single/Countdown  
Timing



Voice Control



Share Control



Smart scene



Sync Status



Stepless dimming



Scene Mode



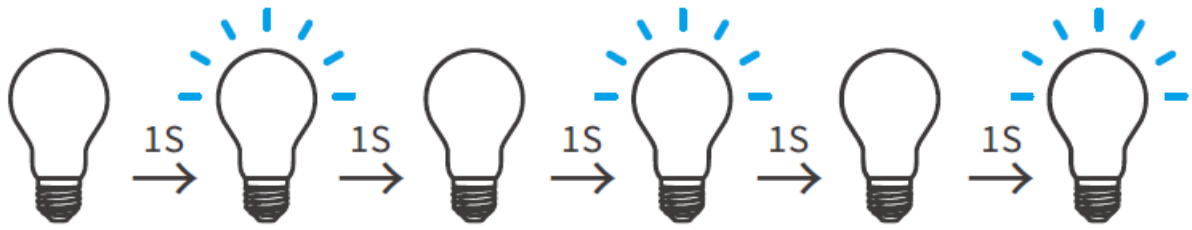
Camera Feature



Group control

## Factory Reset

- Press the light switch 3 times repeatedly at an interval of every 1s (Off-ON-Off-ON-Off- ON) when the light is on. The “breathing mode” indicates the device enters the quick pairing mode (Touch).



- Please reset the device to factory defaults if you want to use other Wi-Fi networks, then reconnect the network.


## Common Problems

### Why my device stays “Offline”?

1. Maybe you have entered the wrong Wi-Fi password.
2. Maybe there's too much distance between the switch and your router or the environment causes interference, consider getting close to the router. If failed, please add it again.
3. The 5G Wi-Fi network is not supported and only supports the 2.4GHz wireless network.
4. Maybe the MAC address filtering is open. Please turn it off.

If none of the above methods solved the problem, you can open the mobile data network on your phone to create a Wi-Fi hotspot, then add the device again.

## Documents / Resources

	<p><a href="#">SONOFF B02-B-A60 WiFi Smart LED Bulb</a> [pdf] Instruction Manual</p> <p>B02-B-A60, B05-B-A60, B02-B-A60 WiFi Smart LED Bulb, WiFi Smart LED Bulb, Smart LED Bulb, LED Bulb, Bulb</p>
---	--