



# SONOFF AirGuard TH Zigbee Temperature and Humidity Sensor User Guide

September 20,  
2025



## Contents [ [hide](#) ]

### 1 AirGuard TH

#### 1.1 Quick Guide V1.0

#### 1.2 Zigbee Temperature and Humidity Sensor

##### 1.2.1 (1) Download the eWeLink App

##### 1.2.2 (2) Take out the battery insulation sheet

##### 1.2.3 (3) Add SONOFF Zigbee gateway (Suggested)

##### 1.2.4 (4) Add device

##### 1.2.5 (5) Installation Methods

##### 1.2.5.1 User Manual

### 2 Documents / Resources

#### 2.1 References

## AirGuard TH

### Quick Guide V1.0



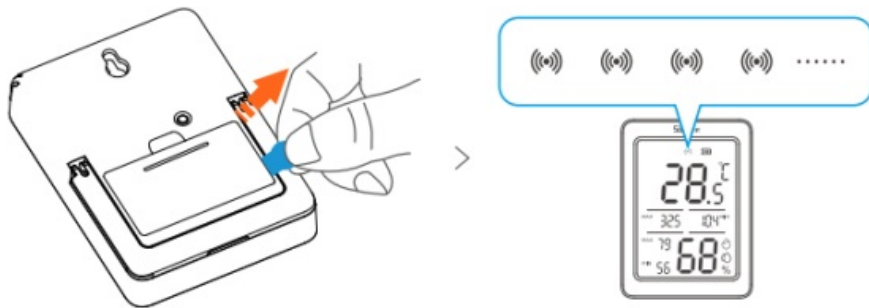
## Zigbee Temperature and Humidity Sensor

### SNZB-02DR2

#### (1) Download the eWeLink App



#### (2) Take out the battery insulation sheet



When the device is used for the first time, it will enter pairing mode by default after being powered on, and the signal icon (📶) is in a “slow flashing state”.

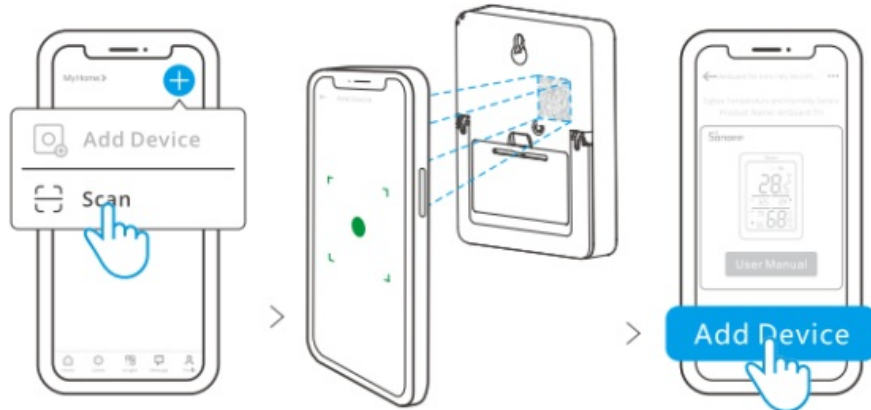


The device will exit the pairing mode if not paired within 3 minutes. When you

want to enter the pairing mode again, long-press the button on the device for 5 seconds until the signal icon (📶) “flashes slowly” and release.

### (3) Add SONOFF Zigbee gateway (Suggested)

### (4) Add device



Open the eWeLink App and scan the QR code on the device, then follow the instructions given by the app to proceed.



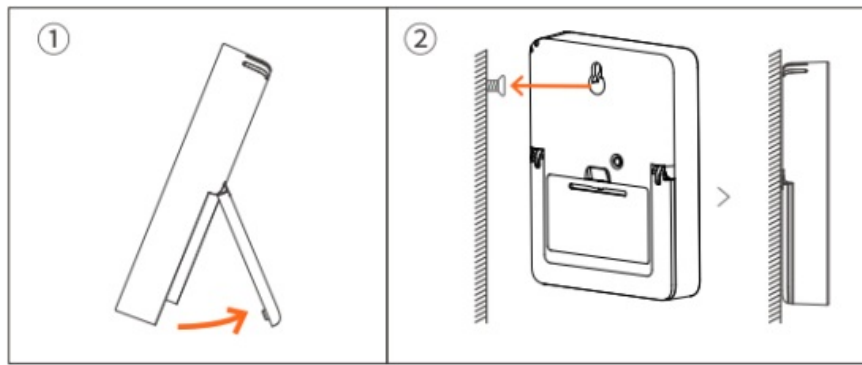
(1) When connected to the Zigbee gateway, the eWeLink App offers full features, including remote access, smart scenes, and notifications.

(2) Without a Zigbee gateway, when the device is connected directly to the phone, the eWeLink App supports basic functions such as data viewing locally.

(3) If the page doesn't display after scanning the code, please click the '+' button in the top right corner of the eWeLink App homepage, select 'Add Device', and follow the prompts to complete pairing.

(4) Double-click the device button to switch the temperature unit.

### (5) Installation Methods



- (1) Open the stand to place the device on a tabletop.
- (2) Use screws to hang the device on the wall.

User Manual

<https://sonoff.tech/usermanuals>

Enter the website provided above to view the User Manual for the device.

### **FCC compliance statement**

Responsible Party Name: SONOFF TECHNOLOGY LLC

Address: 14777 NE 40th St, Suite 201 Bellevue, WA 98007

Email Address: [usres@itead.cc](mailto:usres@itead.cc) FCC ID: 2APN5-SNZB02DR2

1. This device complies with part 15 of the FCC Rules. Operation is subject to the following two conditions:
  - (1) This device may not cause harmful interference, and
  - (2) This device must accept any interference received, including interference that may cause undesired operation.
2. Changes or modifications not expressly approved by the party responsible for compliance could void the user's authority to operate the equipment.

Note: This equipment has been tested and found to comply with the limits for a Class B digital device, pursuant to part 15 of the FCC Rules. These limits are designed to provide reasonable protection against harmful interference in a residential installation. This equipment generates, uses and can radiate radio frequency energy and, if not installed and used in accordance with the instructions, may cause harmful interference to radio communications.

However, there is no guarantee that interference will not occur in a particular installation. If this equipment does cause harmful interference to radio or television reception, which can be determined by turning the equipment off and on, the user is encouraged to try to correct the interference by one or more of the following measures:

- Reorient or relocate the receiving antenna.
- Increase the separation between the equipment and receiver.
- Connect the equipment into an outlet on a circuit different from that to which the receiver is connected.
- Consult the dealer or an experienced radio/TV technician for help.

FCC Radiation Exposure statement:

This equipment complies with FCC radiation exposure limits set forth for an uncontrolled environment.

This equipment should be installed and operated with minimum distance of 20 cm between the radiator and your body.

This transmitter must not be co-located or operating in conjunction with any other antenna or transmitter.

## **For CE Frequency**

### **EU Operating Frequency Range**

Zigbee: 2405-2480 MHz

BLE: 2405-2480 MHz

### **EU Output Power**

Zigbee $\leq$ 10dBm

BLE $\leq$ 10dBm

Under normal use of condition, this equipment should be kept a separation distance of at least 20 cm between the antenna and the body of the user.

## **EU Declaration of Conformity**

Hereby, Shenzhen Sonoff Technologies Co., Ltd. declares that the radio

equipment type SNZB-02DR2 is in compliance with Directive 2014/53/EU. The full text of the EU declaration of conformity is available at the following internet address: <https://sonoff.tech/compliance/>

## WEEE Disposal and Recycling Information



■ All products bearing this symbol are waste electrical and electronic equipment (WEEE as in directive 2012/19/EU) which should not be mixed with unsorted household waste. Instead, you should protect human health and the environment by handing over your waste equipment to a designated collection point for the recycling of waste electrical and electronic equipment, appointed by the government or local authorities. Correct disposal and recycling will help prevent potential negative consequences to the environment and human health. Please contact the installer or local authorities for more information about the location as well as terms and conditions of such collection points.



### WARNING

1. Do not ingest battery, Chemical Burn Hazard.
2. If the battery compartment does not close securely, stop using the product and keep it away from children.  
If you think batteries might have been swallowed or placed inside any part of the body, seek immediate medical attention.
3. DO NOT use metal short-circuited batteries, Otherwise, the batteries may leak, catch fire, or explode.
4. This appliance contains non-rechargeable batteries, these batteries are not to be recharged.

Scatola	Manuale	Borsa
PAP 20	PAP 22	CPE 7
Carta	Carta	Plastica

RACCOLTA DIFFERENZIATA

Verifica le disposizioni del tuo Comune.

Separa le componenti e conferiscile in modo corretto.



**Manufacturer: Shenzhen Sonoff Technologies Co., Ltd.**

Address: 3F & 6F, Bldg A, No. 663, Bulong Rd, Shenzhen, Guangdong, 518000, China


Website: [sonoff.tech](http://sonoff.tech) Service email: [support@itead.cc](mailto:support@itead.cc)

MADE IN CHINA



00.00.07.0470

## Documents / Resources

	<p><a href="#">SONOFF AirGuard TH Zigbee Temperature and Humidity Sensor [pdf]</a> User Guide</p> <p>AirGuard TH, AirGuard TH Zigbee Temperature and Humidity Sensor, Zigbee Temperature and Humidity Sensor, Temperature and Humidity Sensor, Humidity Sensor</p>
-------------------------------------------------------------------------------------	--------------------------------------------------------------------------------------------------------------------------------------------------------------------------------------------------------------------------------------------------------------------

## References

- [User Manual](#)

◆ AirGuard TH, AirGuard TH Zigbee Temperature and Humidity Sensor, Humidity Sensor, SonOFF, Temperature and Humidity Sensor, Zigbee Temperature and Humidity Sensor

---

## Leave a comment

Your email address will not be published. Required fields are marked \*

Comment \*

Name

Email

Website

☐ Save my name, email, and website in this browser for the next time I comment.

**Post Comment**

## Search:

e.g. whirlpool wrf535swhz

**Search**

[Manuals+](#) | [Upload](#) | [Deep Search](#) | [Privacy Policy](#) | [@manuals.plus](#) | [YouTube](#)

This website is an independent publication and is neither affiliated with nor endorsed by any of the trademark owners. The "Bluetooth®" word mark and logos are registered trademarks owned by Bluetooth SIG, Inc. The "Wi-Fi®" word mark and logos are registered trademarks owned by the Wi-Fi Alliance. Any use of these marks on this website does not imply any affiliation with or endorsement.