


# SONOFF 4CHPROR3 4-Channel Wifi Controller User Manual

[Home](#) » [SonOFF](#) » SONOFF 4CHPROR3 4-Channel Wifi Controller User Manual 

## Contents

- [1 SONOFF 4CHPROR3 4-Channel Wifi Controller](#)
- [2 Product Information](#)
- [3 Product Usage Instructions](#)
- [4 Operating Instruction](#)
- [5 Wiring instruction](#)
- [6 Download the eWeLink APP](#)
- [7 Add the device](#)
- [8 Compatible Pairing Mode](#)
- [9 Specifications](#)
- [10 Product Introduction](#)
- [11 Wi-Fi LED indicator status instruction](#)
- [12 Features](#)
- [13 RF Remote Controller Pairing](#)
- [14 Common Problems](#)
- [15 Documents / Resources](#)



**SONOFF 4CHPROR3 4-Channel Wifi Controller**



## Product Information

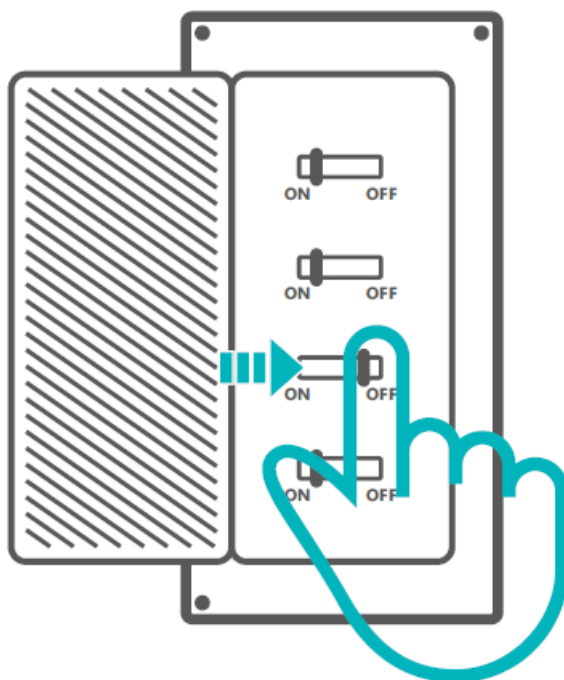
The product is manufactured by SONOFF TECHNOLOGIES CO., LTD. The device is a smart switch that can be controlled through the eWeLink app. It has two models – 4CHR3 and 4CHPROR3, which have different input and load specifications. The device supports Wi-Fi and RF connectivity for remote control. It has LED indicators for On/Off status and Wi-Fi connectivity. The device is made of PC V0 material and has a dimension of 145x90x34mm. The recommended installation height is less than 2m.

## Product Usage Instructions

1. **Power off:** To avoid electric shocks, consult a qualified professional for help with installation and repair.
2. **Wiring instruction:** Follow the wiring instructions provided in the user manual. Make sure all wires are connected correctly.
3. **Download the eWeLink APP:** Download the eWeLink app on your Android or iOS device.
4. **Power on:** Power on the device. During the first use, the device will enter quick pairing mode. If not paired within 3 minutes, it will exit the mode. To enter this mode again, long press any pairing button for about 5 seconds until the Wi-Fi LED indicator changes in a cycle of two short and one long flash and release.
5. **Add the device:** Tap + and select Quick Pairing on the app. Follow the prompt on the app to add the device. If you fail to enter Quick Pairing Mode, try Compatible Pairing Mode to pair.

## Operating Instruction

### Power off

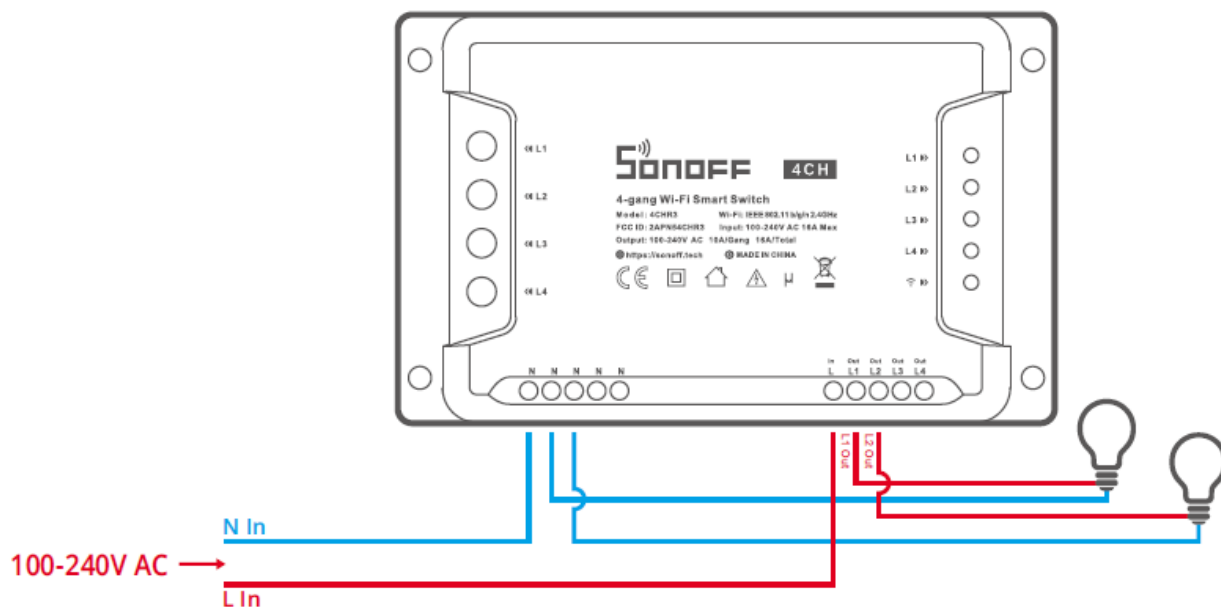


To avoid electric shocks, please consult the dealer or a qualified professional for help when installing and repairing!

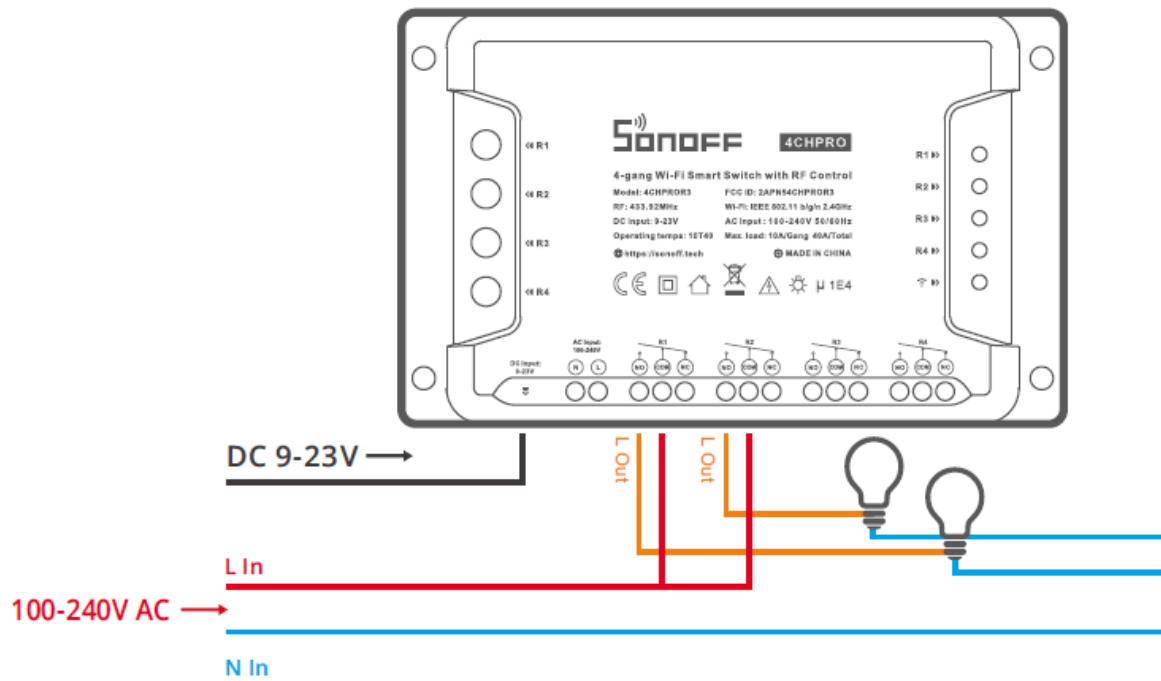
## Wiring instruction

### Light fixture wiring instruction

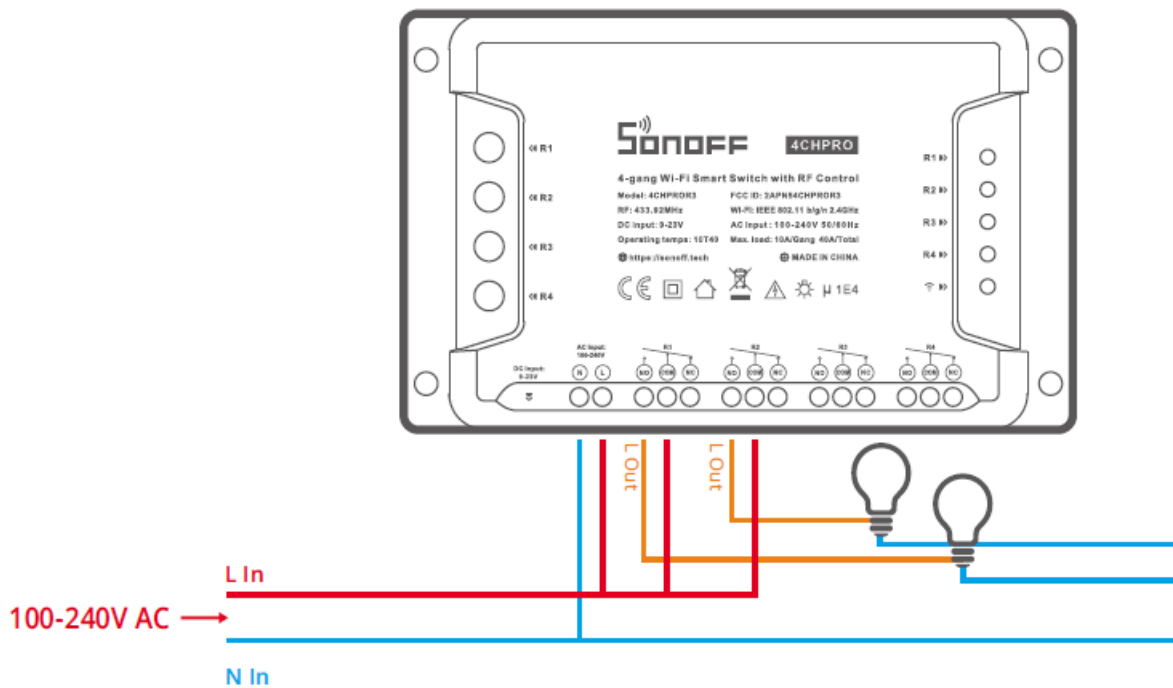
#### 4CHR3



## 4CHPROR3 (DC Input)

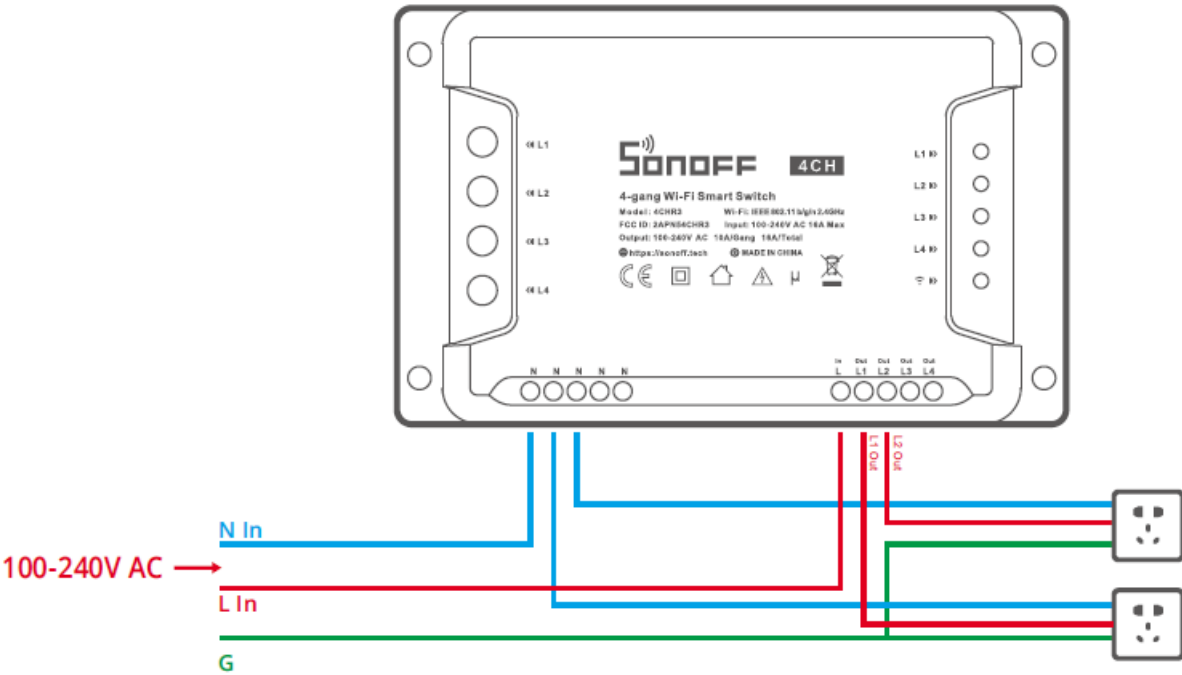


## 4CHPROR3 (AC Input)

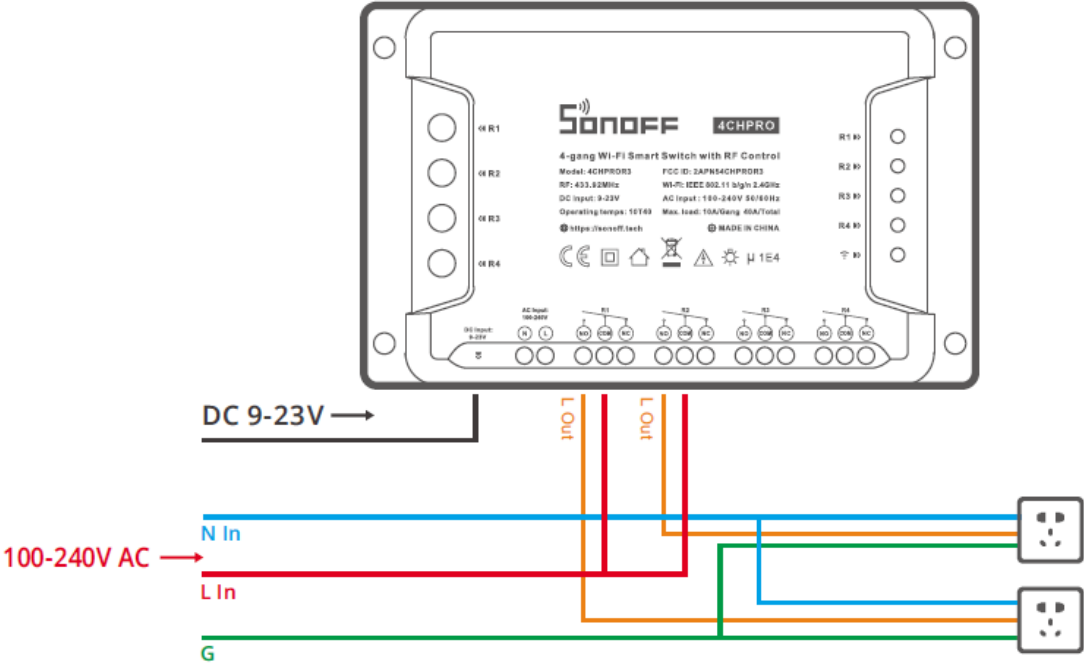


Socket wiring instruction (Don't need to connect if no ground wire):

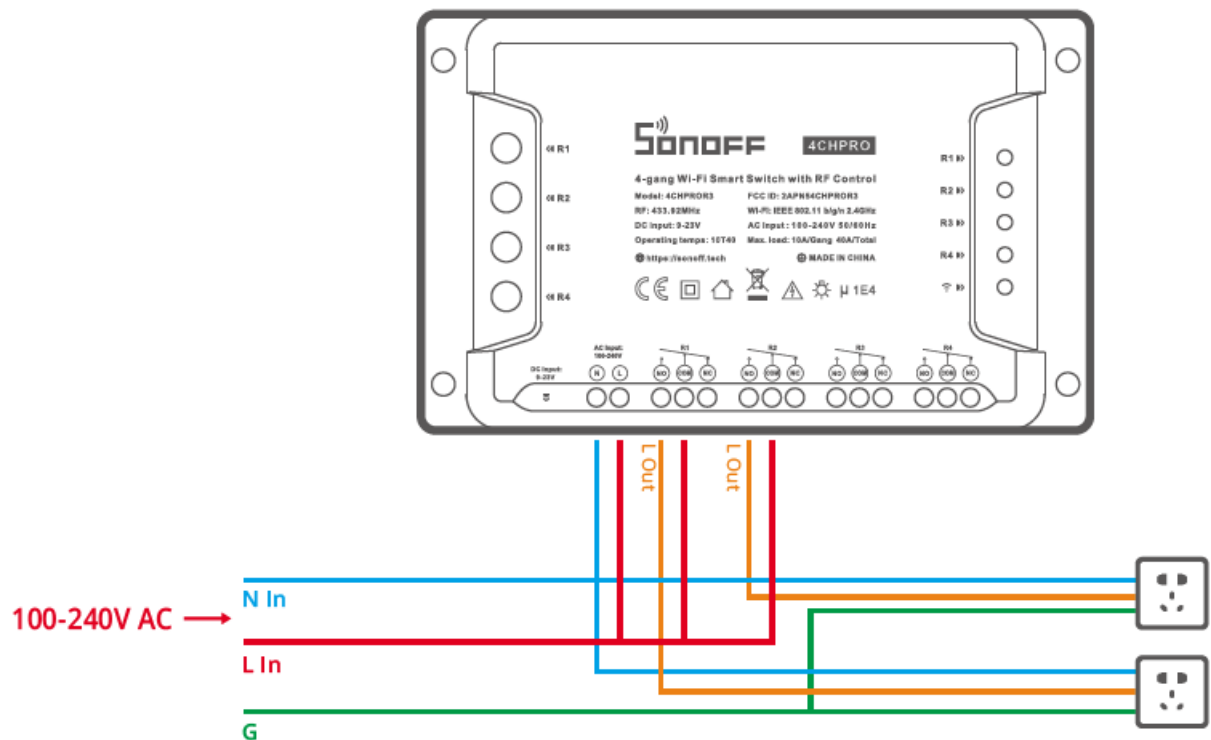
4CHR3



4CHPROR3 (DC Input)



## 4CHPROR3 (AC Input)



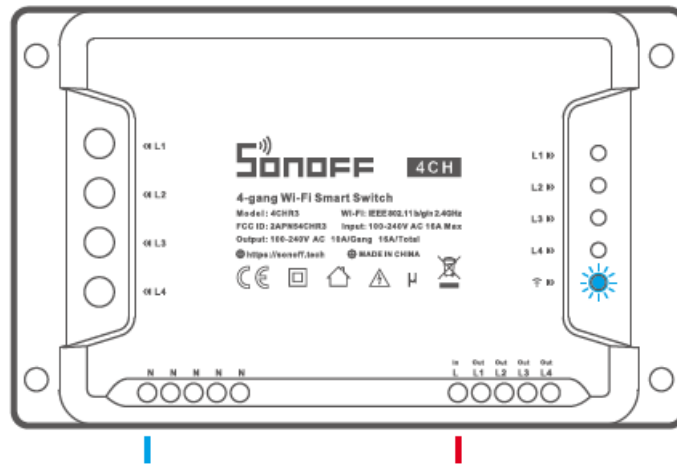
Make sure all wires are connected correctly

Download the eWeLink APP



Android™ & iOS

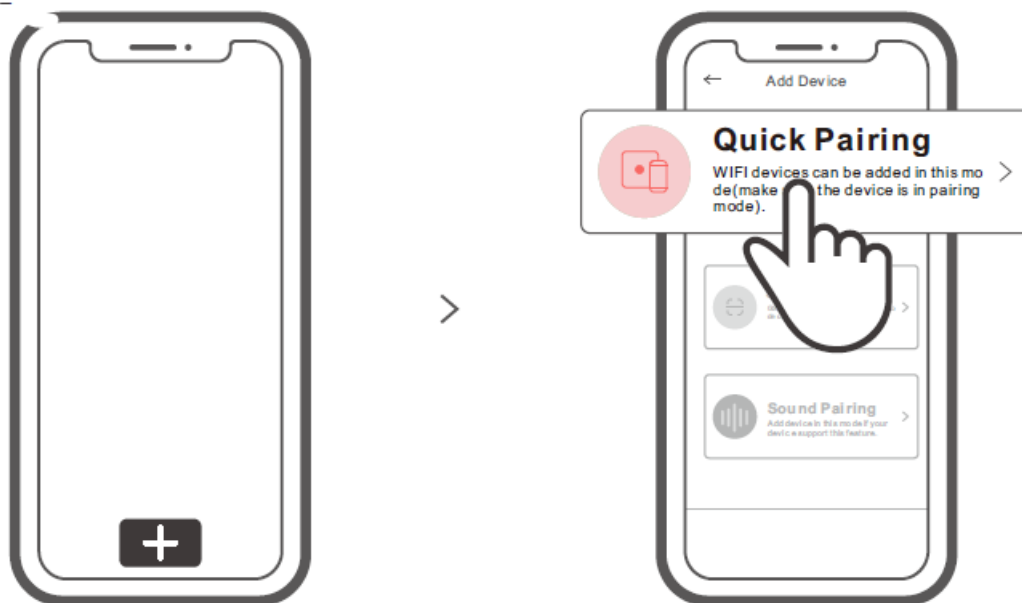
Power on



After powering on, the device will enter the quick pairing mode (Touch) during the first use. The Wi-Fi LED indicator changes in a cycle of two short and one long flash and release.

The device will exit the quick pairing mode (Touch) if not paired within 3mins. If you want to enter this mode, please long press any pairing button for about 5s until the Wi-Fi LED indicator changes in a cycle of two short and one long flash and release.

### Add the device



Tap “+” and select “Quick Pairing”, then operate following the prompt on the APP.

### Compatible Pairing Mode

If you fail to enter Quick Pairing Mode (Touch), please try “Compatible Pairing Mode ” to pair.

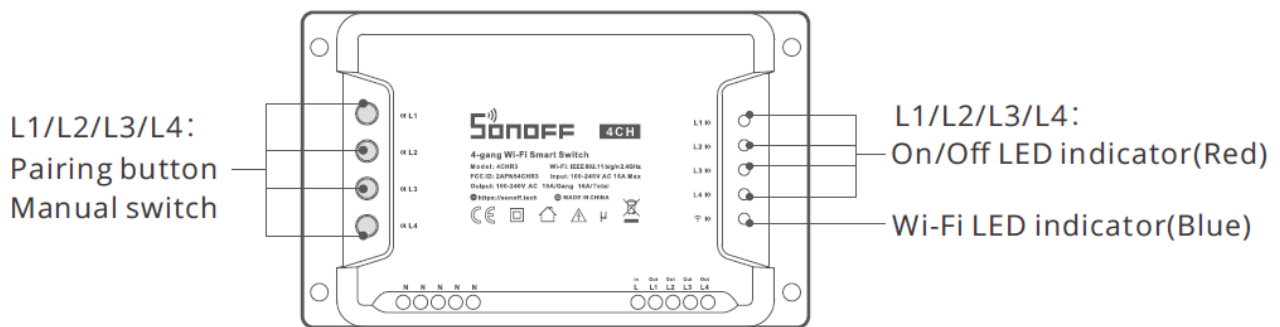
1. Long press any pairing button for 5s until the Wi-Fi LED indicator changes in a cycle of two short flashes and one long flash and release. Long press any pairing button for 5s again until the Wi-Fi LED indicator flashes quickly. Then, the device enters Compatible Pairing Mode .
2. Tap “+” and select “ Compatible Pairing Mode ” on APP.

Select Wi-Fi SSID with ITEAD-\*\*\*\*\* and enter the password 12345678, and then go back to eWeLink APP and tap “Next”. Be patient until pairing completes.

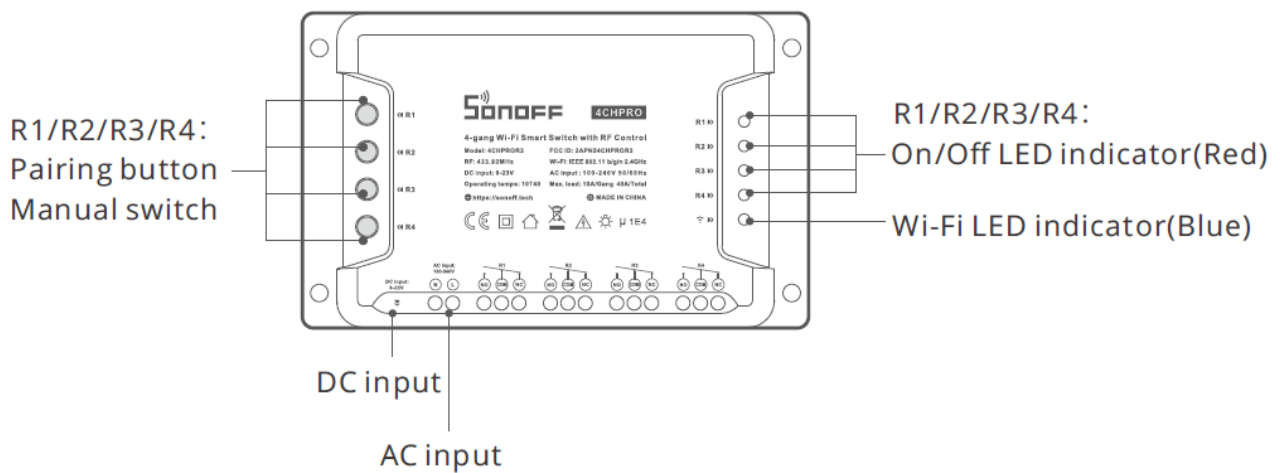
## Specifications

### Product Introduction

#### 4CHR3



#### 4CHPROR3



The device weight is less than 1 kg.

The installation height of less than 2 m is recommended.

### Wi-Fi LED indicator status instruction

### Features

This device is a 4-Gang Wi-Fi smart switch with self-locking, interlock and inching that allow you to remotely turn on/off connected devices via your smartphone, schedule on or off, share to your family to control together.





Remote Control



Single/Countdown Timing



Voice Control



Share Control



Smart Scene



Self-locking



Interlock



Inching



33MHz Remote Control



Power-on State



Camera Linking



LAN Control

## RF Remote Controller Pairing

The 4CHPROR3 supports the remote controller with 433.92MHz frequency brand to turn on/off, and each channel can learn it independently, which is local short-range wireless control not Wi-Fi control.

### Pairing Method:

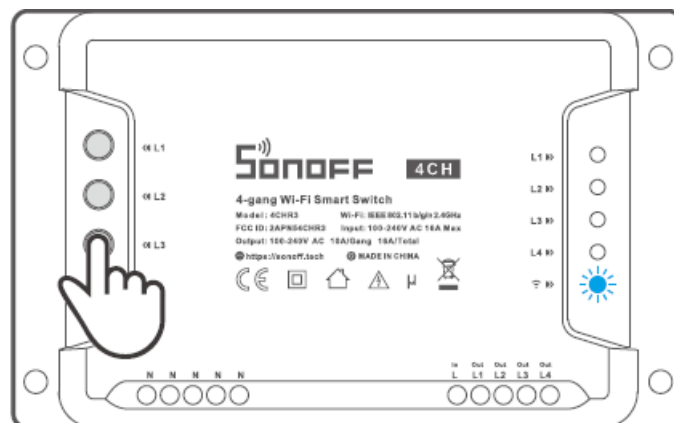
Long press the channel switch button to be paired for 3s until the Wi-Fi LED indicator turns red and “quickly flashes once” and releases, then short press the button to be paired on the remote control. If the Wi-Fi LED indicator turns red and “quickly flashes once”, it indicates that the pairing is successful.

### Clearing Method:

Long press the channel switch button to be cleared for 5s until the Wi-Fi LED indicator turns red and “quickly flashes twice” and releases, then short press the button to be cleared on the remote control. If the Wi-Fi LED indicator turns red and “quickly flashes once”, it indicates that the code is cleared.

## Switch Network

If you need to change the network, Long press any pairing button for about 5s until the Wi-Fi LED indicator changes in a cycle of two short and one long flash and release, , then the device enters quick pairing mode and you can pair again.



## Factory Reset

Deleting the device on the eWeLink app indicates you restore it to the factory setting.

## Common Problems

- Q: Why my device stays “Offline”?

A: The newly added device needs 1 – 2mins to connect to Wi-Fi and the network. If it stays offline for a long time, please judge these problems by the blue Wi-Fi indicator status:

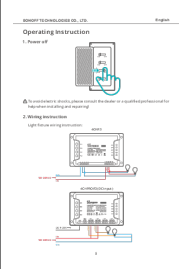
- The blue Wi-Fi indicator quickly flashes once per second, which means that the switch failed to connect to your Wi-Fi:
  - Maybe you have entered the wrong Wi-Fi password.
  - Maybe there's too much distance between the switch and your router or the environment causes interference, consider getting close to the router. If failed, please add it again.
  - The 5G Wi-Fi network is not supported and only supports the 2.4GHz wireless network.
  - Maybe the MAC address filtering is open. Please turn it off.

If none of the above methods solved the problem, you can open the mobile data network on your phone to create a Wi-Fi hotspot, then add the device again.

- The blue indicator quickly flashes twice per second, which means your device has connected to Wi-Fi but failed to connect to the server.

Ensure a steady enough network. If double flash occurs frequently, which means you access an unsteady network, not a product problem. If the network is normal, try to turn off the power to restart the switch.

## Documents / Resources

	<p><a href="#">SONOFF 4CHPROR3 4-Channel Wifi Controller</a> [pdf] User Manual 4CHR3, 4CHPROR3, 4CHPROR3 4-Channel Wifi Controller, 4CHPROR3, 4-Channel Wifi Controller, Wifi Controller, Controller</p>
---	--