

[Skip to content](#)

Manuals+

User Manuals Simplified.

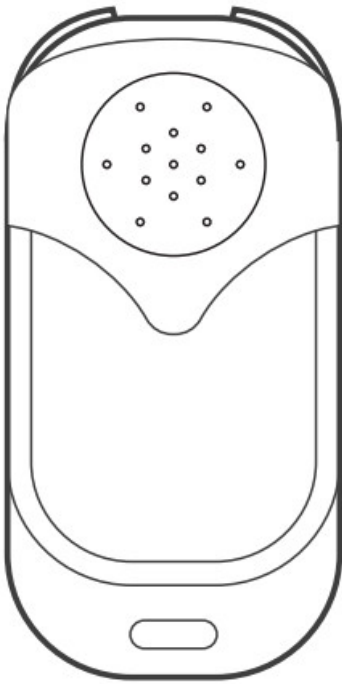


SONOFF 12655 4-Key 433MHz Remote Control User Manual

[Home](#) » [SonOFF](#) » SONOFF 12655 4-Key 433MHz
Remote Control User Manual



12655 4-Key 433MHz Remote Control
User Manual



Contents [hide](#)

[1 Product Introduction](#)

[2 Specifications](#)

[3 How to use](#)

[4 Works with SONOFF devices](#)

[5 FCC Warning](#)

[6 Documents / Resources](#)

[7 Related Posts](#)

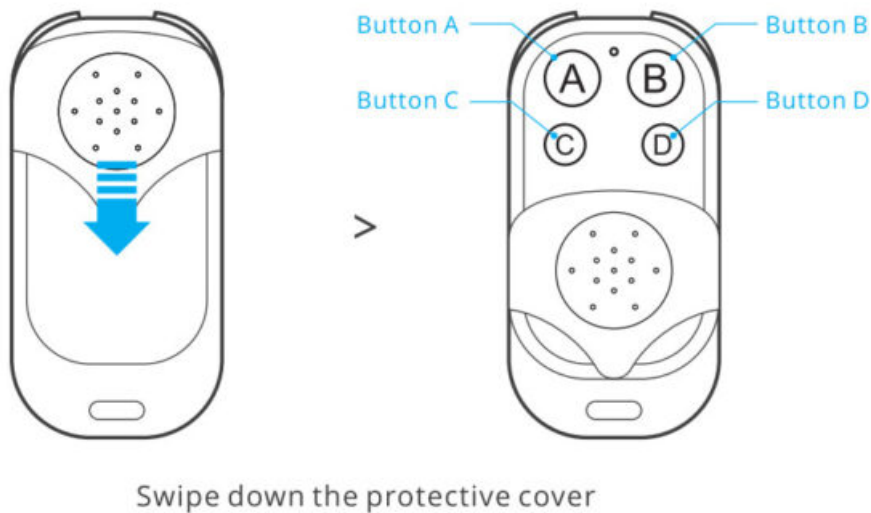
Product Introduction

The device applies to all SONOFF products with 433MHz frequency and other devices supporting the 433MHz communication protocol.

Specifications

Model	4-key 433MHz Remote Controller
RF	433MHz
Power supply	3V button cell x 1 (Battery model: CR2032)
Working current	10mA
Operating temperature	0°C-40°C
Product size	55x30x14mm

How to use



Button A/B/C/D is able to learn devices that support 433MHz communication protocol respectively. After learning successfully, the on / off of these devices can be controlled by this remote controller.

⚠ Different devices have different learning methods, please refer to the User Manual of the devices that support the 433MHz communication protocol.

Works with SONOFF devices

- RFR2
- BASICRFR3
- 4CHPROR3
- SlampherR2
- RF BridgeR2
- TX series Wi-Fi smart switches

Learning case:

1. Remote control and RFR2 learning method Long press the RFR2 pairing button for 3 seconds until the RFR2 signal indicator flashes red, then short press the key to learning on the remote control, and the RFR2 signal indicator flashes red again, indicating that the pairing is successful.
2. The learning method of TX series Wi-Fi smart switches of remote controller Long touch the key of the channel to be paired on the switch for 3 seconds, release it after hearing the “drop” sound of the switch, and then short press the key to be paired on the remote control. If you hear the “drop” sound of the switch again, it indicates that the pairing is successful.

FCC Warning

Changes or modifications not expressly approved by the party responsible for compliance could avoid the user's authority to operate the equipment. This device complies with part 15 of the FCC Rules. Operation is subject to the following two conditions: (1) This device may not cause harmful interference, and (2) this device must accept any interference received, including interference that may cause undesired operation.



Shenzhen Sonoff Technologies Co., Ltd.

3F & 6F, Bldg A, No. 663, Bulong Rd, Shenzhen, GD, China

ZIP code: 518000

Website: sonoff.tech

MADE IN CHINA



UK
CA



Documents / Resources

SONOFF



4-key 433MHz Remote Controller
User manual V1.0

[SONOFF 12655 4-Key 433MHz Remote Control](#) [pdf] User Manual

4-433, 4433, 2APN54-433, 2APN54433, 12655 4-Key 433MHz Remote Control, 12655, 4-Key 433MHz Remote Control

© 2018 Sonoff Technology Co., Ltd. English Version 1.0

[Manuals+](#),

- [home](#)
- [privacy](#)