



SONOFF 105g Wi-Fi Smart Ceiling Fan with Light Controller Instruction Manual

[Home](#) » [SonOFF](#) » SONOFF 105g Wi-Fi Smart Ceiling Fan with Light Controller Instruction Manual 

Contents

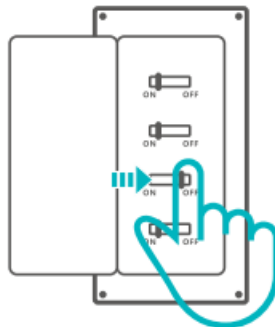
- [1 SONOFF 105g Wi-Fi Smart Ceiling Fan with Light Controller](#)
- [2 Power off](#)
- [3 Wiring instruction](#)
- [4 Equipment Installation](#)
- [5 Download the eWeLink App](#)
- [6 Power on](#)
- [7 Add device](#)
- [8 User Manual](#)
- [9 FCC STATEMENT](#)
- [10 CONTACT](#)
- [11 Documents / Resources](#)
 - [11.1 References](#)
- [12 Related Posts](#)

SONOFF

SONOFF 105g Wi-Fi Smart Ceiling Fan with Light Controller



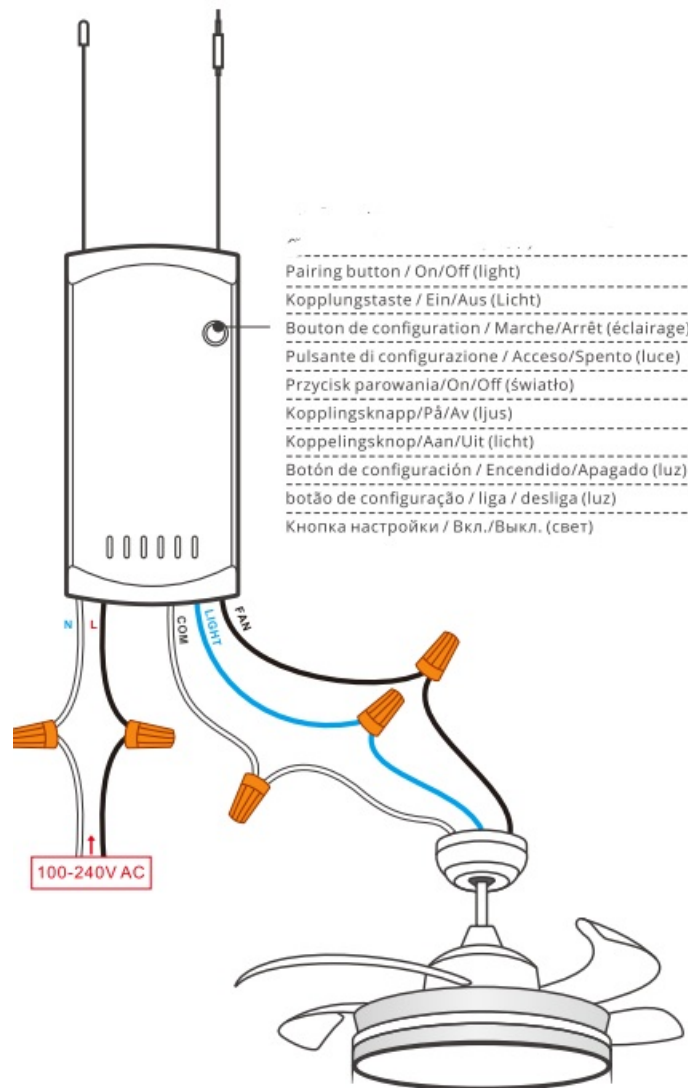
Power off



WARNING

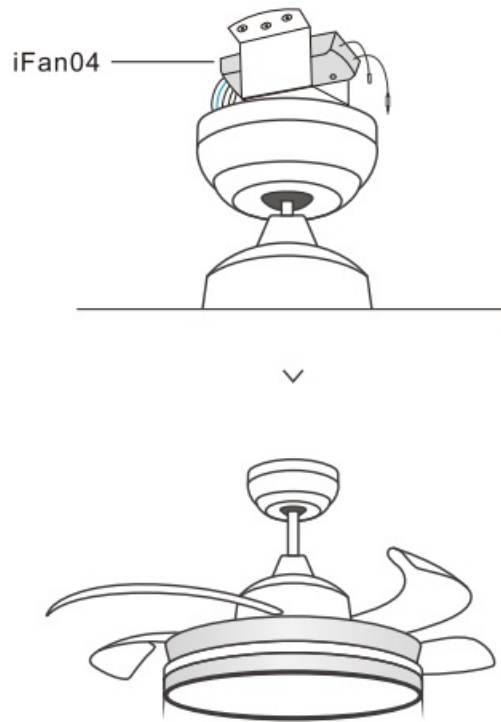
Please have a professional electrician install and maintain the device. To avoid electric shock hazards, do not operate any connection or contact the terminal connector while the device is powered on!

Wiring instruction



- Pairing button / On/Off (light)
- Please install protection devices before connecting the live wire. (e.g. fuses or air switches).
- Make sure all wires are connected correctly

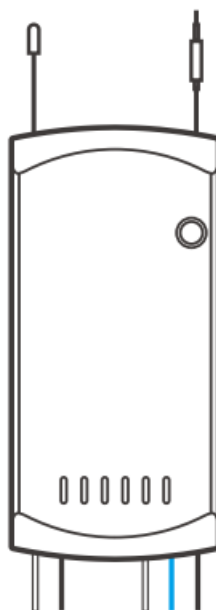
Equipment Installation



Download the eWeLink App



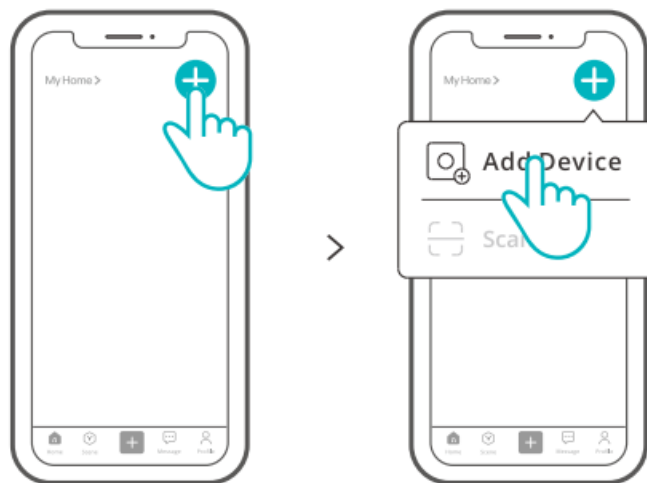
Power on



- After powering on, the device will enter the pairing mode during the first use, then the fan makes two short beeps and one long beep.
- If not paired within 3mins, the device will exit the pairing mode. If you need enter again, long press the “pairing

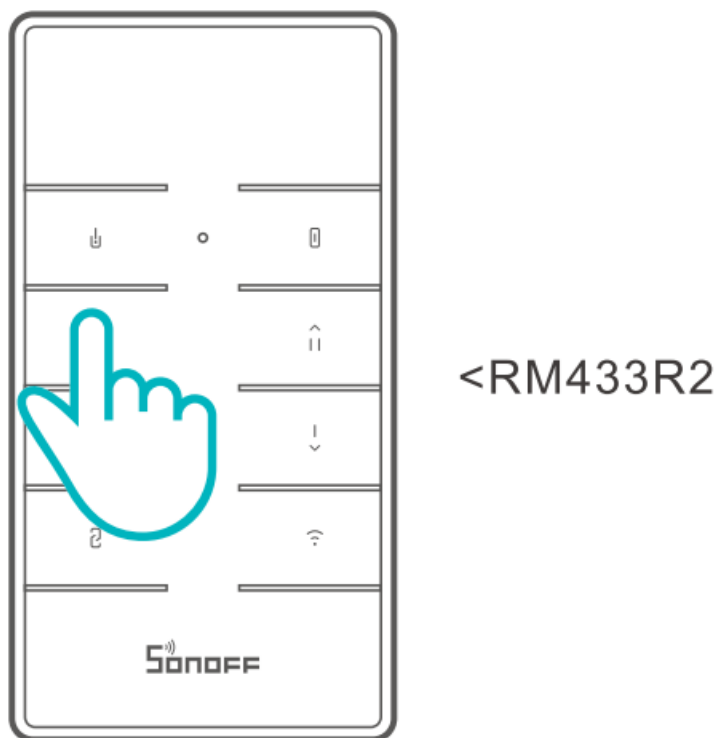
button” on the controller or “Wi-Fi pairing button” on the RM433R2 remote controller and hold 5s until the fan makes two short and one long “beep” sound and release

Add device



Tap “+” and select “Add Device”, then operate following the prompt on the App.

Pairing method for the device and SONOFF RM433R2 remote controller:



Please press any button within 5s after powering on again until the ceiling fan makes a sound “beep”, and the pairing is successful. If you do not operate it within 5s, please power it on again.

User Manual



- <https://www.sonoff.tech/usermanuals>
- Scan the QR code or visit the website to learn about the detailed user manual and help.

Scatola	Manuale
PAP 21	PAP 22
Carta	Carta
RACCOLTA	
Verifica le disposizioni del tuo Comune. Separa le componenti e conferiscile in modo corretto.	

FCC STATEMENT

FCC compliance statement

1. This device complies with part 15 of the FCC Rules. Operation is subject to the following two conditions:
 1. This device may not cause harmful interference, and
 2. This device must accept any interference received, including interference that may cause undesired operation.
2. Changes or modifications not expressly approved by the party responsible for compliance could void the user's authority to operate the equipment.

Note: This equipment has been tested and found to comply with the limits for a Class B digital device, pursuant to part 15 of the FCC Rules. These limits are designed to provide reasonable protection against harmful interference in a residential installation. This equipment generates, uses and can radiate radio frequency energy and, if not installed and used in accordance with the instructions, may cause harmful interference to radio communications. However, there is no guarantee that interference will not occur in a particular installation. If this equipment does cause harmful interference to radio or television reception, which can be determined by turning the equipment off and on, the user is encouraged to try to correct the interference by one or more of the following measures:

- Reorient or relocate the receiving antenna.
- Increase the separation between the equipment and receiver.
- Connect the equipment into an outlet on a circuit different from that to which the receiver is connected.
- Consult the dealer or an experienced radio/TV technician for help.

FCC Radiation Exposure statement:

- This equipment complies with FCC radiation exposure limits set forth for an uncontrolled environment.
- This equipment should be installed and operated with minimum distance of 20 cm between the radiator and your body.
- This transmitter must not be co-located or operating in conjunction with any other antenna or transmitter.

WARNING

Under normal use of condition, this equipment should be kept a separation distance of at least 20 cm between the antenna and the body of the user.

EU Declaration of Conformity

Hereby, Shenzhen Sonoff Technologies Co., Ltd. declares that the radio equipment type iFan04-L, iFan04-H, RM433R2 is in compliance with Directive 2014/53/EU. The full text of the EU declaration of conformity is available at the following internet address: <https://sonoff.tech/compliance/>

WEEE Disposal and Recycling Information



■ All products bearing this symbol are waste electrical and electronic equipment (WEEE as in directive 2012/19/EU) which should not be mixed with unsorted household waste. Instead, you should protect human health and the environment by handing over your waste equipment to a designated collection point for the recycling of waste electrical and electronic equipment, appointed by the government or local authorities. Correct disposal and recycling will help prevent potential negative consequences to the environment and human health. Please contact the installer or local authorities for more information about the location as well as terms and conditions of such collection points.

For CE Frequency

- **EU Operating Frequency Range**
 - Wi-Fi: 802.11 b/g/n20 2412-2472 MHz
 - 433.92MHz (Receive Only)
 - 433.92MHz(RM433R2 Remote Controller)
- **EU Output Power**
 - Wi-Fi 2.4G≤20dBm
 - 433.92MHz≤10dBm
 - (RM433R2 Remote Controller)



To ensure the safety of your electrical installation, it's essential either a Miniature Circuit Breaker (MCB) or a Residual Current Operated Circuit Breaker (RCBO) with an electrical rating of 5A has been installed before the iFan04-L, iFan04-H.



WARNING

- Do not ingest battery, Chemical Burn Hazard.
- This product contains a coin / button cell battery. If the coin / button cell battery is swallowed, it can cause severe internal burns in just 2 hours and can lead to death.
- Keep new and used batteries away from children.
- If the battery compartment does not close securely, stop using the product and keep it away from children.
- If you think batteries might have been swallowed or placed inside any part of the body, seek immediate medical attention.
- Replacement of a battery with an incorrect type that can defeat a safeguard (for example, in the case of some lithium battery types). Disposal of a battery into fire or a hot oven, or mechanically crushing or cutting of a battery, that can result in an explosion.
- Leaving a battery in an extremely high temperature surrounding environment that can result in an explosion or the leakage of flammable liquid or gas. A battery subjected to extremely low air pressure that may result in an explosion or the leakage of flammable liquid or gas.

UL 4200A compliance statement

 WARNING	
<ul style="list-style-type: none">• INGESTION HAZARD: This product contains a button cell or coin battery.• DEATH or serious injury can occur if ingested.• A swallowed button cell or coin battery can cause Internal Chemical Burns in as little as 2 hours.• KEEP new and used batteries OUT OF REACH of CHILDREN.• Seek immediate medical attention if a battery is suspected to be swallowed or inserted inside any part of the body.	

- Remove and immediately recycle or dispose of used batteries according to local regulations and keep away from children. Do NOT dispose of batteries in household trash or incinerate.
- Even used batteries may cause severe injury or death.
- Call a local poison control center for treatment information.
- Compatible battery type: CR2450
- Nominal battery voltage: 3V —
- Non-rechargeable batteries are not to be recharged.
- Do not force discharge, recharge, disassemble, heat above 60°C or incinerate. Doing so may result in injury due to venting, leakage or explosion resulting in chemical burns.
- Ensure the batteries are installed correctly according to polarity(+ and -)
- Do not mix old and new batteries, different brands or types of batteries, such as alkaline, carbon-zinc, or rechargeable batteries.

- Remove and immediately recycle or dispose of batteries from equipment not used for an extended period of time according to local regulations.
- Always completely secure the battery compartment. If the battery compartment does not close securely, stop using the product, remove the batteries, and keep them away from children.

CONTACT

Shenzhen Sonoff Technologies Co., Ltd.

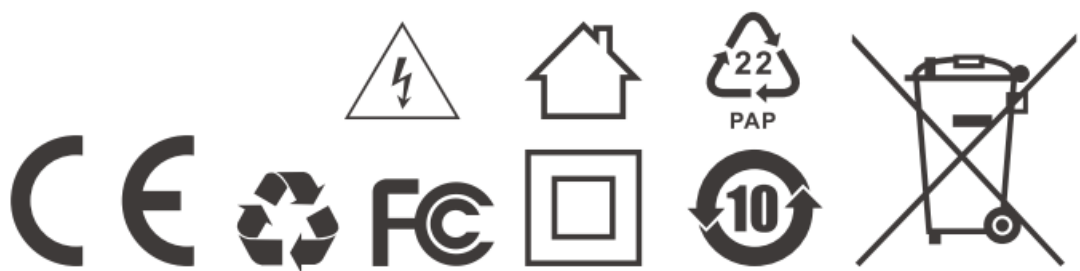
1001, BLDG8, Lianhua Industrial Park, shenzhen, GD, China

ZIP code: 518000

Website: sonoff.tech

Service email: support@itead.cc

MADE IN CHINA



Documents / Resources

	<p>SONOFF 105g Wi-Fi Smart Ceiling Fan with Light Controller [pdf] Instruction Manual 594x100mm, 105g, 105g Wi-Fi Smart Ceiling Fan with Light Controller, 105g, Wi-Fi Smart Ceiling Fan with Light Controller, Ceiling Fan with Light Controller, Fan with Light Controller, Light Controller, Controller</p>
--	----------------------------------------------------------------------------------------------------------------------------------------------------------------------------------------------------------------------------------------------------------------------------------------------------------------------------------------------------

References

- [User Manual](#)

[Manuals+](#), [Privacy Policy](#)

This website is an independent publication and is neither affiliated with nor endorsed by any of the trademark owners. The "Bluetooth®" word mark and logos are registered trademarks owned by Bluetooth SIG, Inc. The "Wi-Fi®" word mark and logos are registered trademarks owned by the Wi-Fi Alliance. Any use of these marks on this website does not imply any affiliation with or endorsement.