

Sonneten B0C5CBK919 Handheld Wireless Microphone



Sonneten B0C5CBK919 Handheld Wireless Microphone User Guide

[Home](#) » [Sonneten](#) » Sonneten B0C5CBK919 Handheld Wireless Microphone User Guide 

Contents

- [1 Sonneten B0C5CBK919 Handheld Wireless Microphone](#)
- [2 Product Information](#)
- [3 Product Usage Instructions](#)
- [4 Specifications](#)
- [5 About the Cable](#)
- [6 How to Use](#)
- [7 FCC Statement](#)
- [8 RF Exposure Statement](#)
- [9 Correct Disposal of This Product](#)
- [10 Documents / Resources](#)
 - [10.1 References](#)

Sonneten

Sonneten B0C5CBK919 Handheld Wireless Microphone



Product Information

The Handheld Wireless Microphone is a versatile device that allows you to sing, record, and enjoy music with various voice effects. It features adjustable microphone volume, music volume controls, echo/remix volume, and voice effects for a personalized experience.

Specifications

- **Output power:** 5W
- **Voltage:** DC 5V

Product Usage Instructions

Charging the Microphone

To charge the microphone, follow these steps:

1. Insert the included Micro USB charging cable into the Micro USB charging port on the microphone.
2. When the battery is low, the red LED light will indicate low power and turn on.
3. While charging, the red LED light will be on.
4. Once fully charged, the red LED light will turn off.

Recording on Music Apps/Smart TV

To record on your phone's music apps or smart TV:

1. Insert the Micro USB plug into the microphone and connect the 3.5mm interface to your device's earphone jack.

2. Open a Karaoke App such as Smule or YouTube on your mobile phone or other device.
3. Select your favourite song to sing and record in the app.
4. Save your recording in the app for future playback.

Connecting via Bluetooth/Wireless

You can connect the microphone wirelessly to devices like smartphones, tablets, smart TVs, or cars with Bluetooth capabilities. Alternatively, use a 3.5mm audio cable to connect to devices like headphones for a wired connection.

FAQ

- **Q: How do I adjust the microphone volume?**

A: Slide the Mic Volume control to the top to increase the microphone's volume and to the bottom to decrease it. If the volume is still low, adjust the echo volume and music volume for better sound.

- **Q: How do I change voice effects?**

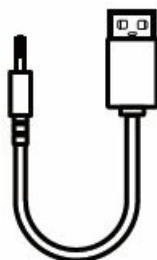
A: Press and hold the Remix control for 3 seconds to switch between various funny and interesting voice effects. Click once to adjust the volume of the human voice while singing.

Specifications

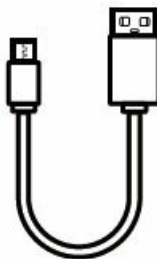
- **Output power:** 5W
- **Voltage:** DC 5V

About the Cable

- Cable for Recording x 1



- Cable for Charging x 1



How to Use

1.  " "

On/Off: Press and hold it for 2 seconds. After turning it on, please turn on your device's Bluetooth find the Bluetooth name "K Microphone" on your device's Bluetooth setting interface, and then connect it to your device. It supports many music Apps and allows you to sing and play music simultaneously. You are only required to

connect once, the next time you turn it on, it will automatically re-connect with your device. If you want to disconnect it from your device, please remove the Bluetooth name "K Microphone" from your device's Bluetooth setting interface.

2. "▶||"

Play or pause the music: click once.

3. "⏮"

Skip to the previous song: click once.

4. "⏭"

Skip to the next song: click once.

5. **Mic Volume.**

Slide it to the top to increase the microphone's volume, and slide it to the bottom to decrease the microphone's volume. If the microphone volume is still low, please try to increase the echo volume and the music volume.

6. **VOL+:**

Increase the music volume. You can also adjust the music volume on your phone.

7. **VOL-:**

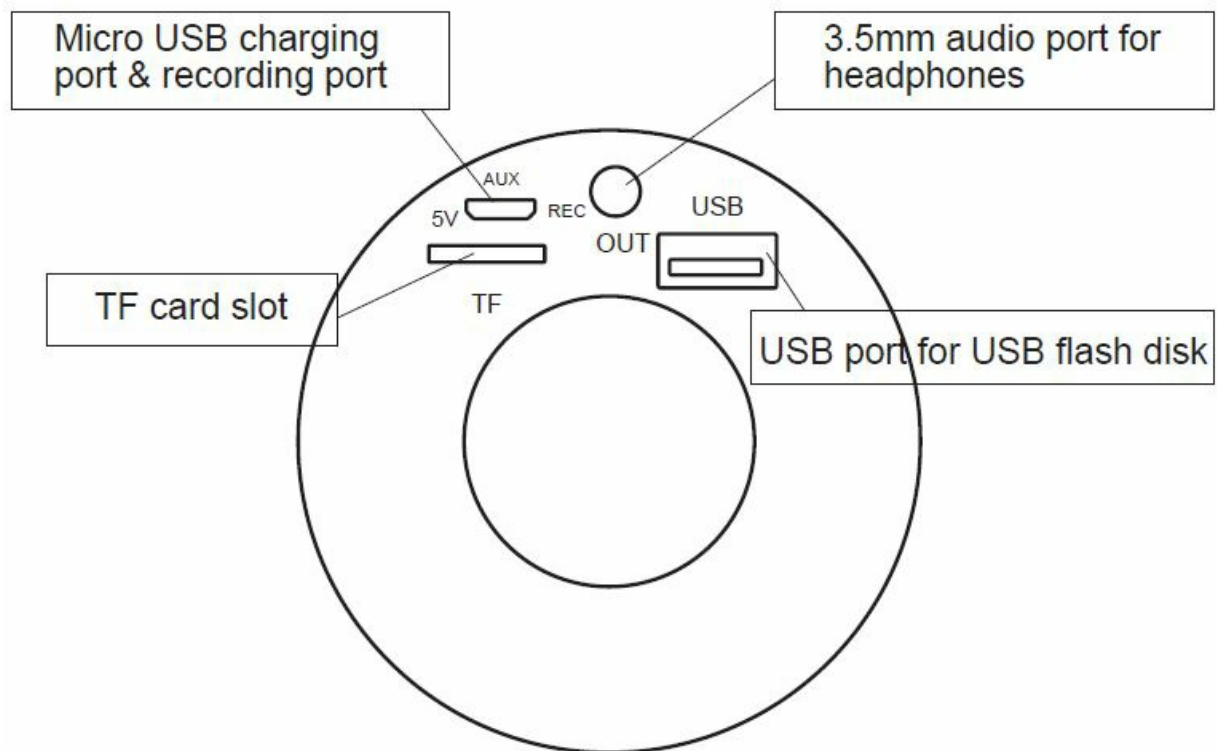
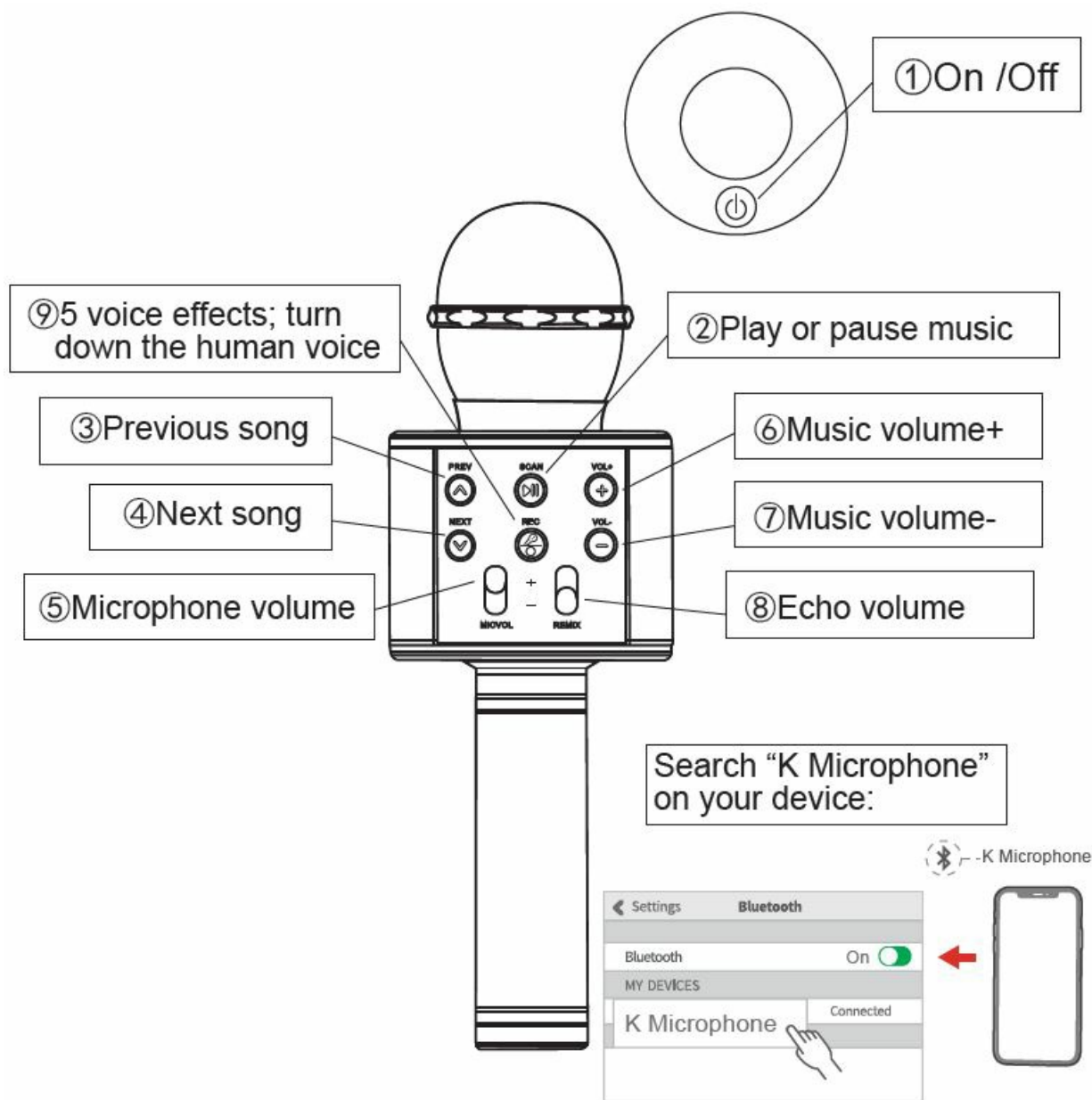
Decrease the music volume. You can also adjust the music volume on your phone.

8. **Remix:**

Slide it to the top to increase the echo/remix volume, and slide it to the bottom to decrease the echo/remix volume. When you are singing, we recommend you increase this volume to get a better experience.

9. "🎤/🔄"

Change voice effects: press and hold it for 3 seconds to change your voice to many funny and interesting voice effects. Under music playing mode, click it once to turn down the volume of the human voice in the singing.



Warm notes:

1. How to charge: please insert the included Micro USB charging cable into the Micro USB charging port to charge it when it has low power (low power prompt: "battery is low"). Charging: the red LED light is on. Full charge: the red LED goes out.
2. How to record on your phone's music apps/or smart TV: firstly, please insert the Micro USB plug into this microphone and insert the 3.5mm interface to your mobile phone or other device's earphone jack. Then open a Karaoke App such as Smule, Youtube, USING on your mobile phone or other recording Apps, and select your favourite song to start singing and record in your App. Finally, save it in your App.
3. You can choose Bluetooth/wireless to connect this microphone to your device such as a smartphone/tablet/smart TV/ a car with Bluetooth function, you can also use a 3.5mm audio cable to connect it to your devices such as headphones.

FCC Statement

This device complies with Part 15 of the FCC rules. Operation is subject to the following two conditions:

1. This device may not cause harmful interference, and
2. This device must accept any interference reviewed, including interference that may cause undesired operation.

Changes or modifications not expressly approved by the party responsible for compliance could void the user's authority to operate the equipment.

Note:

This equipment has been tested and found to comply with the limits for a Class B digital device, according to Part 15 of the FCC Rules. These limits are designed to provide reasonable protection against harmful interference in a residential installation.

This equipment generates uses and can radiate radio frequency energy and, if not installed and used under the instructions, may cause harmful interference to radio communications. However, there is no guarantee that interference will not occur in a particular installation. If this equipment does cause harmful interference to radio or television reception, which can be determined by turning the equipment off and on, and user is encouraged to try to correct the interference by one or more of the following measures:

- Reorient or relocate the receiving antenna.
- Increase the separation between the equipment and the receiver.
- Connect the equipment to an outlet on a circuit different from that to which the receiver is connected.
- Consult the dealer or an experienced radio/TV technician for help.

Note:

This device and its antenna(s) must not be co-located or operated in conjunction with any other antenna or transmitter.

RF Exposure Statement

This equipment complies with FCC's RF exposure guidelines. This equipment should be installed and operated with a minimum distance of 20cm between the radiator & your body. This device and its antenna(s) must not be co-located or operated in conjunction with any other antenna or transmitter.

Correct Disposal of This Product

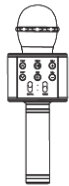
(Waste Electrical & Electronic Equipment)

This marking shown on the product or its literature indicates that it should not be disposed of with other household wastes at the end of its working life.

To prevent possible harm to the environment or human health from uncontrolled waste disposal, please separate this from other types of waste and recycle it responsibly to promote the sustainable reuse of material resources. Household users should contact either the retailer where they purchased this product or their local government office, for details of where and how they can take the item for environmentally safe recycling.

Business users should contact their supplier and check the terms and conditions of the purchase contract. This product should not be mixed with other commercial wastes for disposal.

Documents / Resources

	<p>Sonneten B0C5CBK919 Handheld Wireless Microphone [pdf] User Guide B0C5CBK919 Handheld Wireless Microphone, B0C5CBK919, Handheld Wireless Microphone, Wireless Microphone, Microphone</p>
--	---

References

- [User Manual](#)

[Manuals+.](#) [Privacy Policy](#)

This website is an independent publication and is neither affiliated with nor endorsed by any of the trademark owners. The "Bluetooth®" word mark and logos are registered trademarks owned by Bluetooth SIG, Inc. The "Wi-Fi®" word mark and logos are registered trademarks owned by the Wi-Fi Alliance. Any use of these marks on this website does not imply any affiliation with or endorsement.