



Sonix SN8F5959 Series Microcontroller Starter Kit User Manual

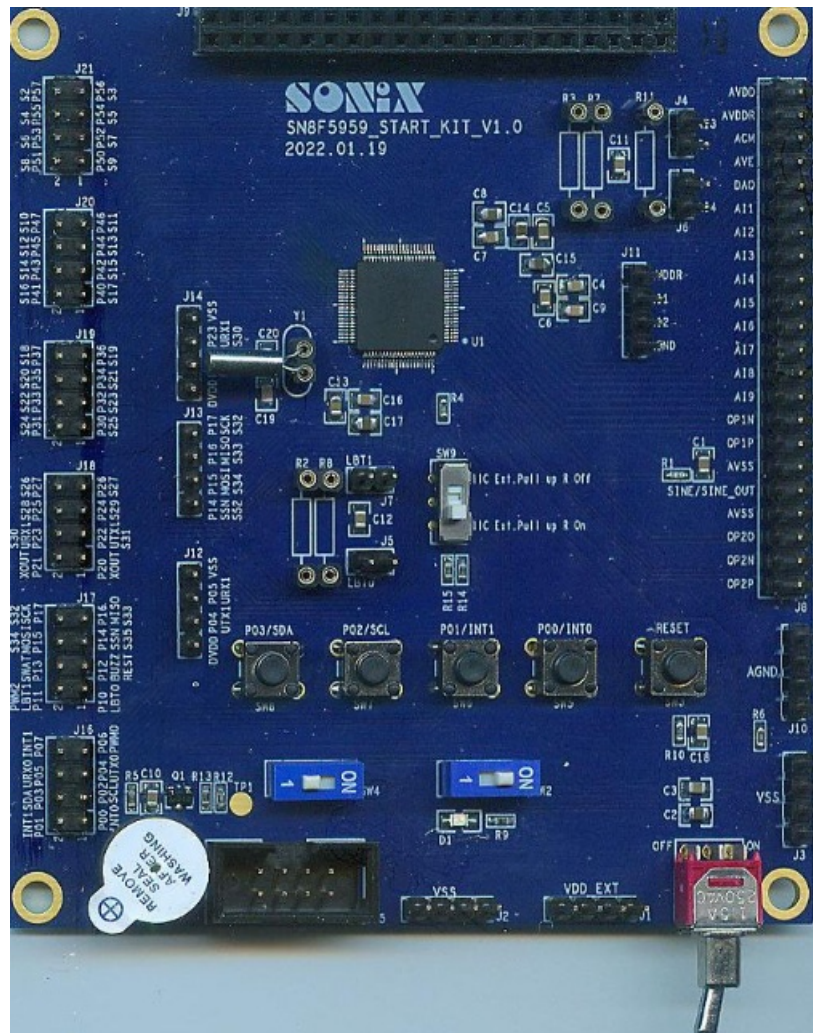
[Home](#) » [Sonix](#) » Sonix SN8F5959 Series Microcontroller Starter Kit User Manual 

Contents

- [1 Sonix SN8F5959 Series Microcontroller Starter Kit](#)
- [2 Product Information](#)
- [3 Overview of Starter Kit](#)
- [4 Revision History](#)
- [5 SN8F5959 Starter-Kit](#)
- [6 Documents / Resources](#)
 - [6.1 References](#)
- [7 Related Posts](#)



Sonix SN8F5959 Series Microcontroller Starter Kit



Product Information

- **Product Name:** SN8F5959 Starter-Kit
- **Manufacturer:** SONiX Technology Co., Ltd.
- **Microcontroller:** 8051-based SN8F5959/ SN8F5958 family
- **Website:** www.sonix.com.tw

Overview of Starter Kit

The SN8F5959/ SN8F5958 Starter-Kit is an easy-development platform that provides a simple way to develop applications using the SN8F5959/ SN8F5958 family microcontrollers. The kit includes a real chip from the SN8F5959/ SN8F5958 family and I/O connectors for input signals or driving user application devices. It can be used as a target board when the actual target board is not ready. The Starter-Kit can be replaced by the target board as the SN8F5959/ SN8F5958 family integrates an embedded ICE in-circuit debugger circuitry.

Development Environment

The SN8F5959/ SN8F5958 debug tool works with Keil C51, which includes an integrated development environment (IDE) called Keil Vision, C51/A51 compilers, and BL51 linker. For detailed information, refer to the SN8F5959/ SN8F5958 Debug Tool User Manual available for download on the [SONiX website](http://www.sonix.com.tw).

Setup Instructions

1. Confirm that all elements on the circuit board are complete.
2. The power source for the Starter-Kit circuit should be within the range of 2.0V to 5.5V.
3. Connect crystal/resonator oscillator components to the XIN and XOUT pins when setting the timer clock to X'tal

or T0 Timer setting RTC mode.

4. The Debug port can be connected to the SN-LINK adapter for emulation or code download.
5. The MCU LED will light up, and the SN8F5959/ SN8F5958 family chip will be connected to power when the power (VDD) is switched on.

Schematic

The user manual provides a schematic diagram of the SN8F5959 Starter-Kit. Please refer to the manual for a detailed schematic diagram.

Overview of Starter Kit

SN8F5959 / SN8F5958 Starter-Kit provides easy-development platform. It includes SN8F5959/ SN8F5958 family real chip and I/O connectors to input signal or drive device of user's application. It is a simple platform to develop application as target board not ready. The Starter-Kit can be replaced by target board, because SN8F5959/ SN8F5958 family integrates embedded ICE in-circuit debugger circuitry.

Development Environment

SN8F5959/ SN8F5958 debug tool cooperate with Keil C51 which includes integrated development environment (IDE, Keil µVision), C51/A51 compilers and BL51 linker. See detailed documentation of SN8F5959/ SN8F5958 Debug Tool User Manual (download on www.sonix.com.tw).

Development Environment

These configurations must be setup completely before starting Starter-Kit developing.

1. Confirm to the circuit board whether elements are complete.
2. The power source of Starter-Kit circuit is 2.0~5.5V.
3. "XIN" pin and the "XOUT" pin need to connect crystal/resonator oscillator components when timer clock is setting X'tal or T0 Timer setting RTC mode.
4. The Debug port can connect SN-LINK adapter for emulation or download code.
5. The MCU LED will light up and SN8F5959/ SN8F5958 family chip will be connected to power when power (VDD) is switched on.

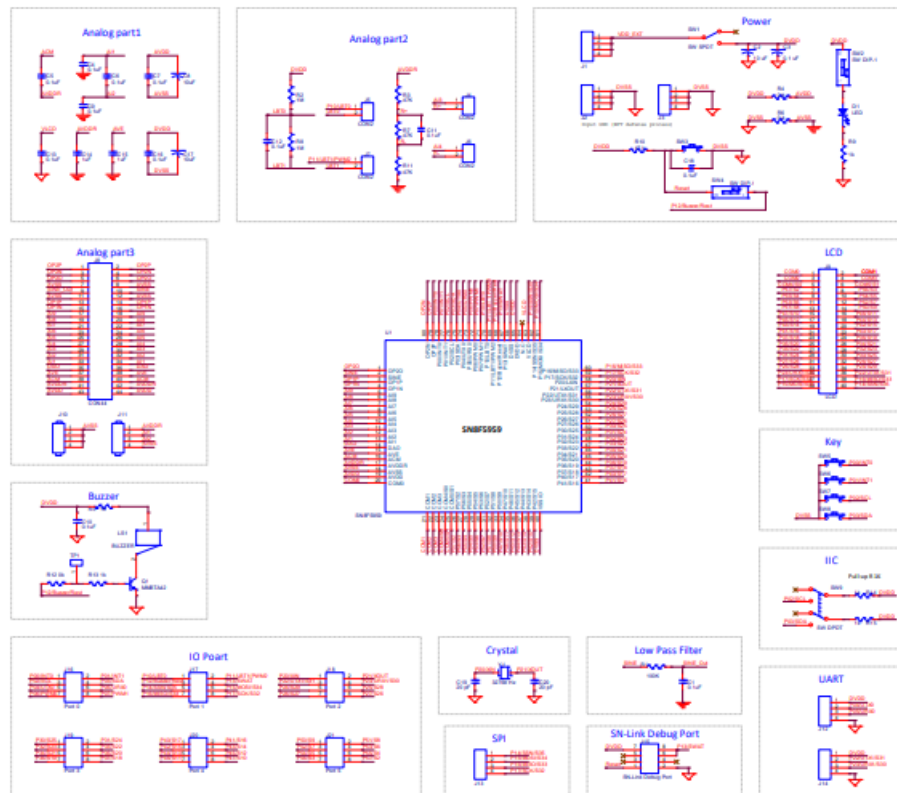
Revision History

Revision	Date	Description
1.0	JUN 2022	First issue.

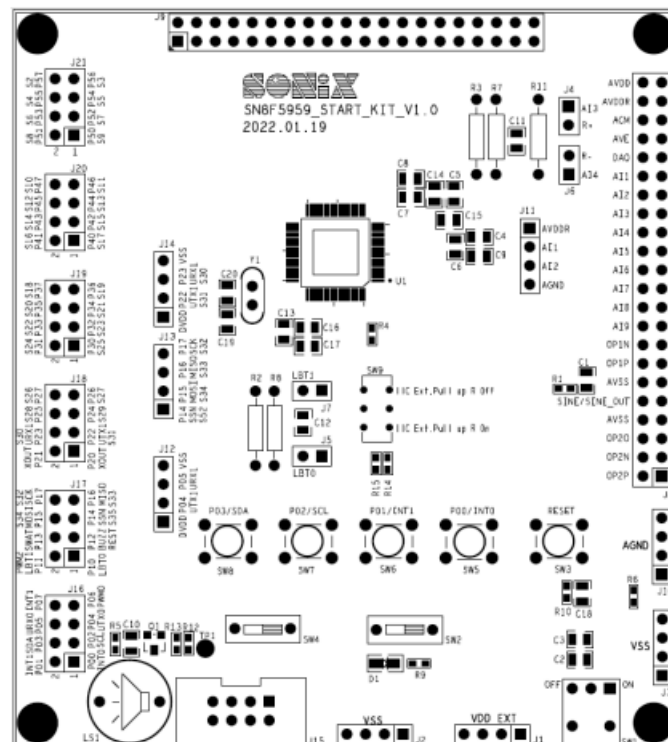
SONIX reserves the right to make change without further notice to any products herein to improve reliability, function or design. SONIX does not assume any liability arising out of the application or use of any product or circuit described herein; neither does it convey any license under its patent rights nor the rights of others. SONIX products are not designed, intended, or authorized for use as components in systems intended, for surgical implant into the body, or other applications intended to support or sustain life, or for any other application in which the failure of the SONIX product could create a situation where personal injury or death may occur. Should Buyer purchase or use SONIX products for any such unintended or unauthorized application. Buyer shall indemnify and hold SONIX and its officers, employees, subsidiaries, affiliates and distributors harmless against all claims, cost, damages, and expenses, and reasonable attorney fees arising out of, directly or indirectly, any claim of personal injury or death associated with such unintended or unauthorized use even if such claim alleges that SONIX was negligent regarding the design or manufacture of the part.

SN8F5959 Starter-Kit

Schematic



Floor Plan of PCB layout



Component Description

Number	Description
C13	VLCD function capacitor.
C14,C15	AVDDR,AVE capacitor.
C6	ADC input differential capacitor .
J5,J7	LBT function connector.
R2,R8,C12	LBT capacitor and resisters.
C7,C8	AVDD power regulators capacitance.
C16,C17	DVDD power regulators capacitance.
J1	Power source.
J8	ADC input pin connection.
J2,J3	DVSS pin.
D1,R9	MCU LED and resister.
J16-J21	I/O connector.
SW5-SW8	I/O button.
R4,R5	0 ohm resisters.
J9	LCD function connector.
SW3,R10,C18	External reset trigger source
SW4	External reset trigger function switch.
Y1,C19,C20	External crystal/resonator oscillator components.
SW1	Target power (VDD) switch.
J15	Debug Port
U1	SN8F5959 real chip (SONiX standard option).

Copyright © 2022, SONiX Technology Co., Ltd. User Manual Rev. 1.0
SN8F5959 Starter-Kit

Corporate Headquarters

- 10F-1, No. 36, Taiyuan St. Chupei City, Hsinchu, Taiwan
- **TEL:** +886-3-5600888
- **FAX:** +886-3-5600889

Taipei Sales Office

- 15F-2, No. 171, Songde Rd. Taipei City, Taiwan
- **TEL:** +886-2-27591980
- **FAX:** +886-2-27598180

- mkt@sonix.com.tw sales@sonix.com.tw

Hong Kong Sales Office

- Unit 2603, No. 11, Wo Shing St. Fo Tan, Hong Kong
- **TEL:** +852-2723-8086
- **FAX:** +852-2723-9179
- hk@sonix.com.tw

Shenzhen Contact Office

- High Tech Industrial Park, Shenzhen, China
- **TEL:** +86-755-2671-9666
- **FAX:** +86-755-2671-9786
- mkt@sonix.com.tw
- sales@sonix.com.tw


USA Office

- **TEL:** +1-714-3309877
- **TEL:** +1-949-4686539
- tlightbody@earthlink.net

Japan Office

- 2F, 4 Chome-8-27 Kudanminami Chiyoda-ku, Tokyo, Japan
- **TEL:** +81-3-6272-6070
- **FAX:** +81-3-6272-6165 jpsales@sonix.com.tw
- FAE Support via email
- **8-bit Microcontroller Products:** sa1fae@sonix.com.tw
- **All Products:** fae@sonix.com.tw

Documents / Resources

	<p>Sonix SN8F5959 Series Microcontroller Starter Kit [pdf] User Manual SN8F5959, SN8F5958, SN8F5959 Series Microcontroller Starter Kit, SN8F5959, Series Microcontroller Starter Kit, Microcontroller Starter Kit, Starter Kit</p>
---	---

References

- [!\[\]\(6841ca9b0e023296428e7c9e683b9367_img.jpg\) :: Sonix Technology Co., Ltd. ::](#)
- [!\[\]\(e258e347e7683f87061f627f84598eb5_img.jpg\) :: Sonix Technology Co., Ltd. ::](#)
- [User Manual](#)