



## SONICWARE LIVEN LoFi-12 v2.1 Sampling GrooveBox User Guide

[Home](#) » [SONICWARE](#) » SONICWARE LIVEN LoFi-12 v2.1 Sampling GrooveBox User Guide 

### SONICWARE LIVEN LoFi-12 v2.1 Sampling GrooveBox



The update process of the LIVEN LoFi-12 requires a USB-MIDI interface.

**USB-MIDI interfaces that we confirmed to operate properly:** Roland UM-ONE mk2, Yamaha UX-16, iConnectivity mio You can use a USB audio interface with MIDI ports or an electronic musical instrument with USB-MIDI functionality (Only devices that support the transfer of MIDI system exclusive messages, such as SmpITrek v2.0).

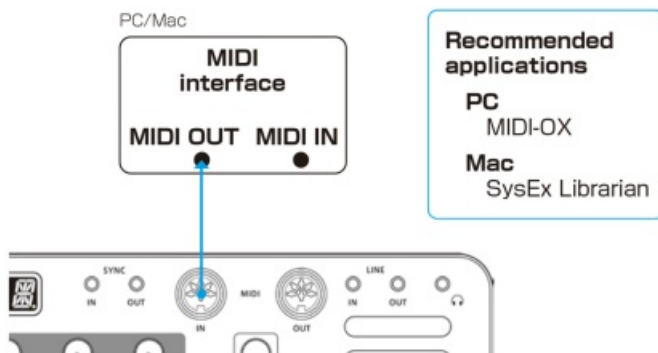
## Contents

- [1 Preparing to update](#)
- [2 Updating the firmware](#)
- [3 Importing the Preset Drum kit samples](#)
- [4 Set up the Preset Drum kit sample](#)
- [5 Troubleshooting](#)
- [6 Documents / Resources](#)
- [7 Related Posts](#)

## Preparing to update

Follow the instruction manual for your USB-MIDI interface, connect it to your PC/Mac, and configure the USB-MIDI settings.

Then, connect the MIDI OUT of the USB-MIDI interface to the MIDI IN of the Lofi-12 with a MIDI cable.



And you will also need to download and install the following application on your PC/Mac

### [for PC]

Download and install the MIDI-OX application from the URL below. <http://www.midiox.com/>

### [for Mac]

Download and install the SysEx Librarian application from the URL below.

<https://www.snoize.com/SysExLibrarian/> [Note] Use new batteries or an AC adapter. Never interrupt the power during a firmware update.

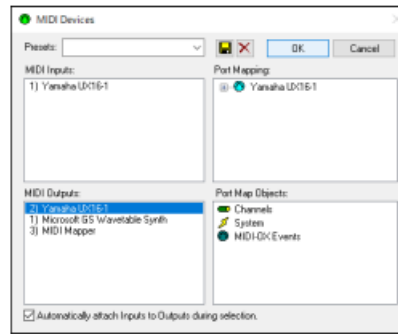
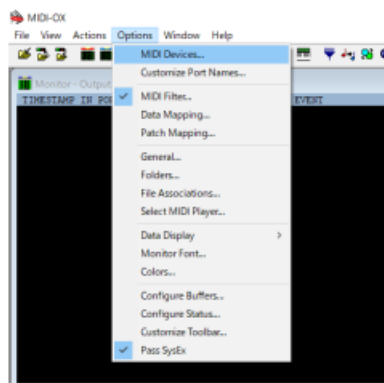
## Updating the firmware

### [for PC]

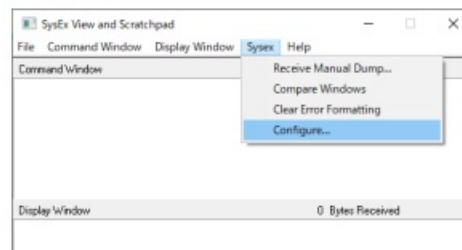
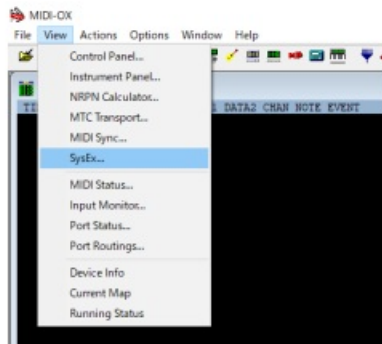
1. Press and hold the shift button + the POWER switch to turn on the Lofi-12.

The Lofi-12 starts and UPDT appears on the display.

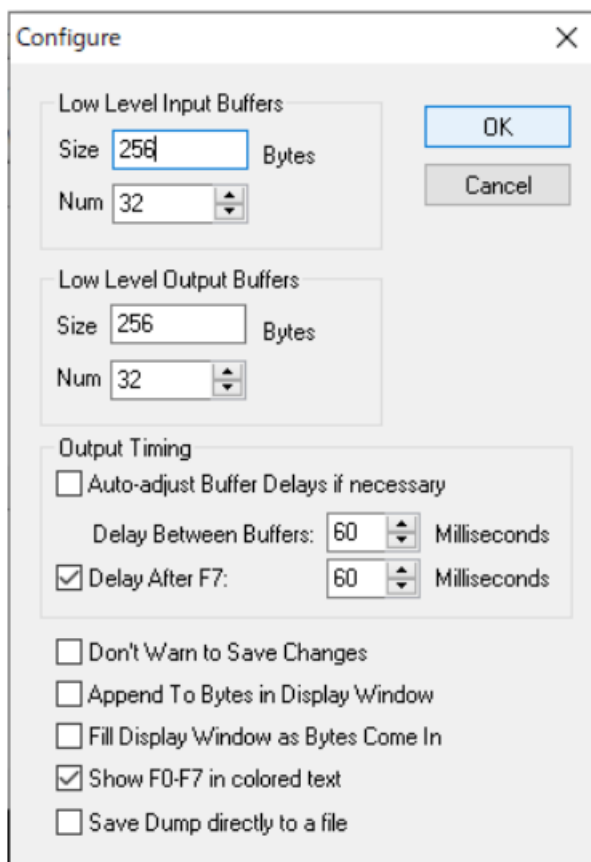
2. Double-click the MIDI-OX application to launch it.
3. From the Options menu, select MIDI Devices... and select the USBMIDI interface connected to your PC.



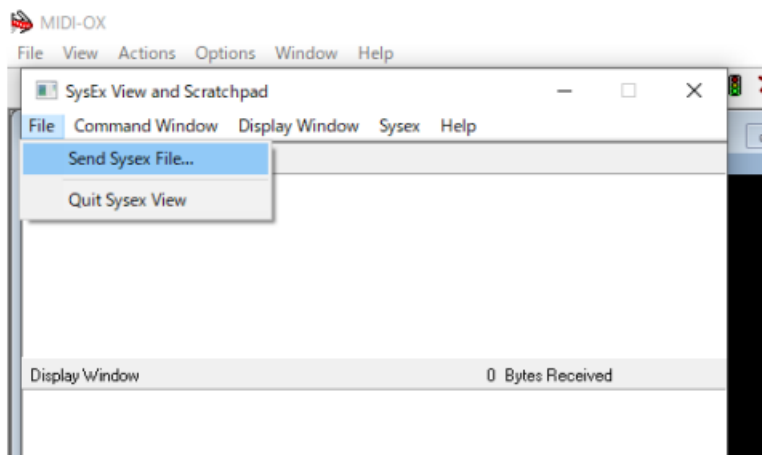
4. From the View menu, select SysEx... and select Configure... from the Sysex menu of the newly opened window.



5. Set the Configure settings as follows



6. From the File menu, select Send Sysex File... and select the firmware file LIVEN\_LOFI\_SYSTEM\_2\_x\_xx.syx then click OK.



7. Data transmission begins.

RCV appears on the Lofi-12 display and the step LEDs indicate the progress of data transmission (transmission is complete when all are lit).

8. After the transmission is complete, press the OK button on the Lofi-12 to execute the update.

The step LED lights up to indicate progress.

When the update is successful, OK is displayed (if there is an error, the error code on P. 6 is displayed).

9. Restart the Lofi-12.

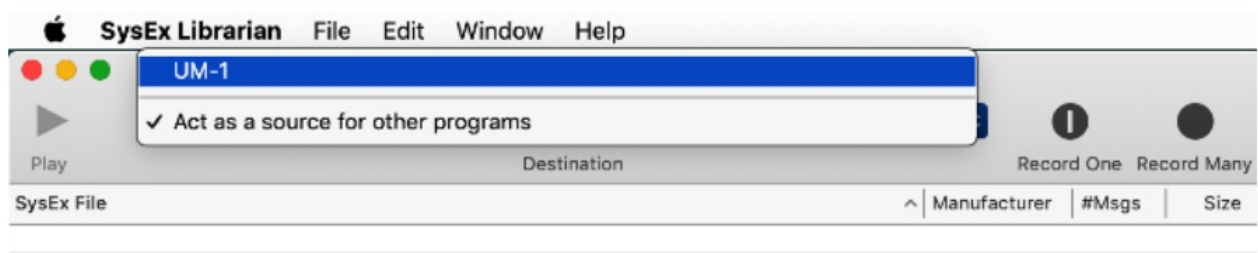
### [for Mac]

1. Press and hold the shift button + the POWER switch to turn on the Lofi-12.

The Lofi-12 starts and UPDT appears on the display.

2. Double-click the Firmware file LIVEN\_LOFI\_SYSTEM\_2\_x\_xx.syx. The SysEx Librarian application starts up.

3. Click Act as a source for other programs and select the USB-MIDI interface connected to your Mac.



4. Click Play▶.

Data transmission begins.

RCV appears on the Lofi-12 display and the step LEDs indicate the progress of data transmission (transmission is complete when all are lit).

5. After the transmission is complete, press the OK button on the Lofi-12 to execute the update.

The step LED lights up to indicate progress.

When the update is successful, OK is displayed (if there is an error, the error code on P. 6 is displayed).

6. Restart the Lofi-12.

## Importing the Preset Drum kit samples

1. Press the func button + SAMPLE key on the Lofi-12 to enter SAMPLE & EDIT mode. (→P.42 in the manual)

2. Select a slot to import the drum kit sample with the VALUE knob. You can audition the current content of the selected slot by playing the keyboard.
3. Press OK(→EDIT) button to enable editing  
After EDIT appears on the display, all the step LEDs light up and the Lofi12 enters a standby state for receiving data.
4. [for PC] in MIDI-OX, [for Mac] in SysEx Librarian, open the drum kit sample syx file.  
Please refer to the above procedure for Updating the firmware.
5. Start transmitting data from the application.  
The Lofi-12 receives the data but the display will not change to reflect this. When the transmission is complete, the display will show RCV followed by the name of the imported sample.
6. Press OK(SAVE) button twice to save it.  
Repeat the above procedure to import the drum kit sample files to new sample slots.  
Press the CLR(EXIT) button to return to the regular mode when you are finished.

## Set up the Preset Drum kit sample

Select a drum kit sample in the sample selection, then hold down the func button and press the MODE [VOICE] button several times to select DRUM.

The drum kit can be played on the 8 white keys from the left end of the keyboard. →P.40 in the manual

## Troubleshooting

### Error codes

System related  
ER.10 : System error  
ER.11 : Low battery  
Data Receiving related  
ER.20 : Data receiving error  
ER.21 : Invalid data  
ER.22 : No need to update (Boot)  
Update related  
ER.30 : Update failed

After updating, the system status can be checked with the following button LEDs.

(Green for normal, red for abnormal)

PTN button: Preset, 1/3 button: Main, 2/4 button: Boot

If the firmware update fails, adjust the buffer size and transmission speed, and transmit the syx file again.

#### [for PC]

In the Configure menu, double the Num and Size values for Low Level Output Buffers and try to transmitting it again.

If it does not work, double the Delay Between Buffers and Delay After F7 values in the Output Timing section.

#### [for Mac]

In the Preferences, try lowering the Transmit Speed tab. If it does not work, try reducing the speed further.

## Documents / Resources

