



SONBUS QC3651B Rail Type Color Screen Display 8 Channel Infrared Temperature Measuring Alarm User Manual

[Home](#) » [SONBUS](#) » SONBUS QC3651B Rail Type Color Screen Display 8 Channel Infrared Temperature Measuring Alarm User Manual 

Contents

- [1 SONBUS QC3651B Rail Type Color Screen Display 8 Channel Infrared Temperature Measuring Alarm](#)
- [2 Technical Parameters](#)
- [3 Product Size](#)
- [4 How to wiring](#)
- [5 How to use](#)
- [6 Application solution](#)
- [7 Product List](#)
- [8 Disclaimer](#)
- [9 Contact Us](#)
- [10 Documents / Resources](#)
 - [10.1 References](#)
- [11 Related Posts](#)

SONBUS

SONBUS QC3651B Rail Type Color Screen Display 8 Channel Infrared Temperature Measuring Alarm



Technical Parameters

Technical parameter	Parameter value
Brand	TRANBALL
Running temperature	-30~85℃
Working humidity	5%RH~90%RH

Product Size

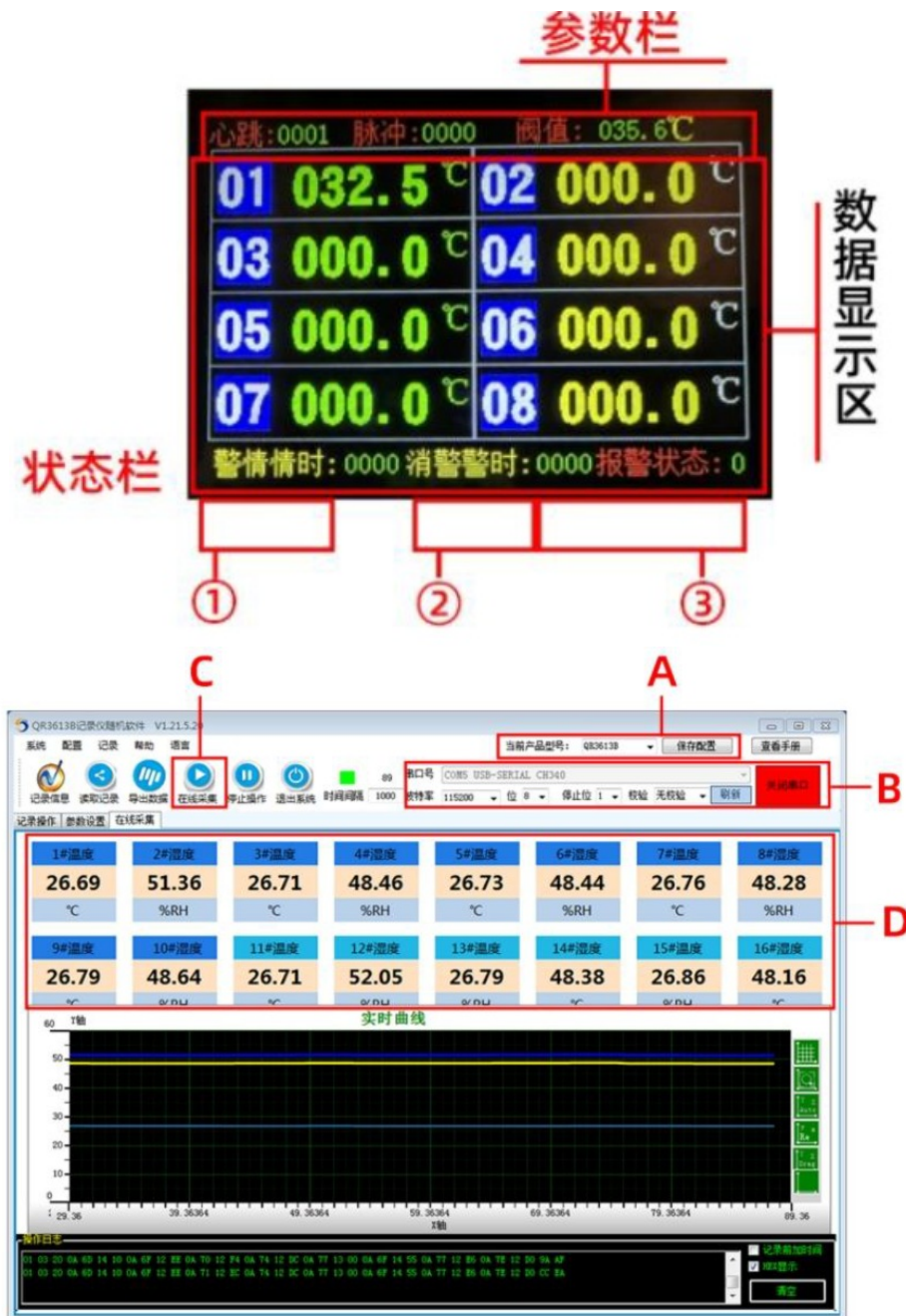


How to wiring

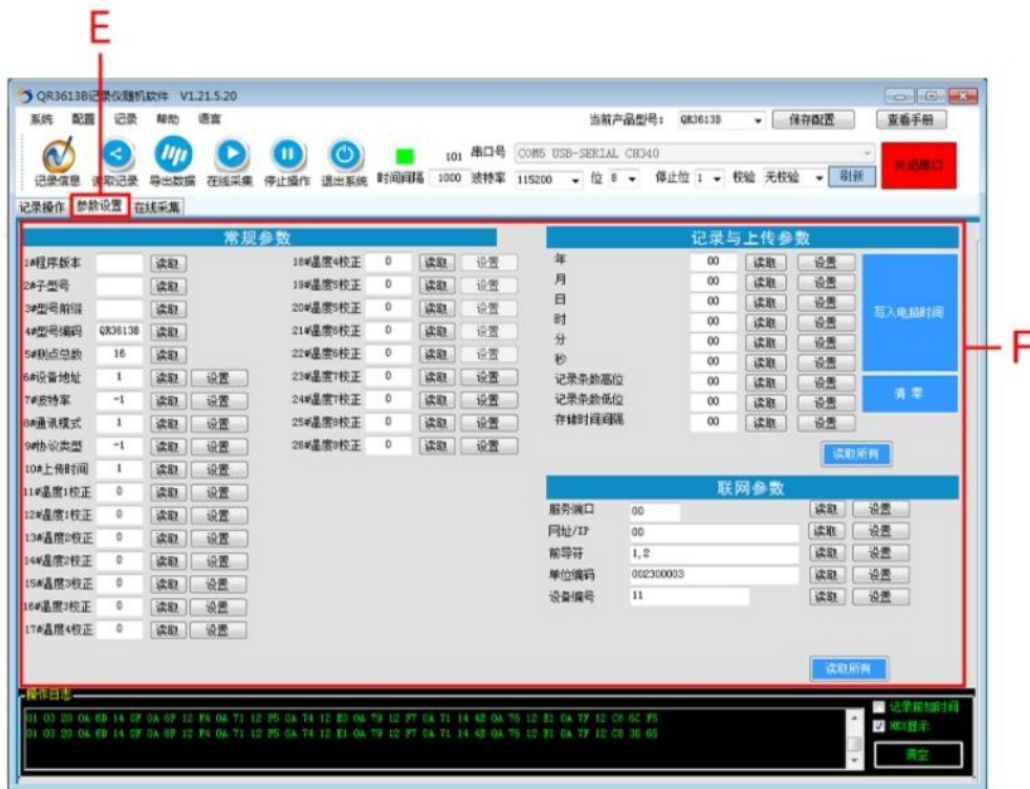
Wiring method (sensor)		Wiring method (RS485)	
V1	Sensor PWR+	V+	PWR+
D1	Sensor out	V-	PWR-
S1	Sensor out	A+	RS485 A+
V-	Sensor PWR-	B-	RS485 B-
.....			
V8	Sensor PWR+		
D8	Sensor out		
S8	Sensor out		
V-	Sensor PWR-		

※Note: When wiring, connect the positive and negative poles of the power supply first, and then connect the signal wire

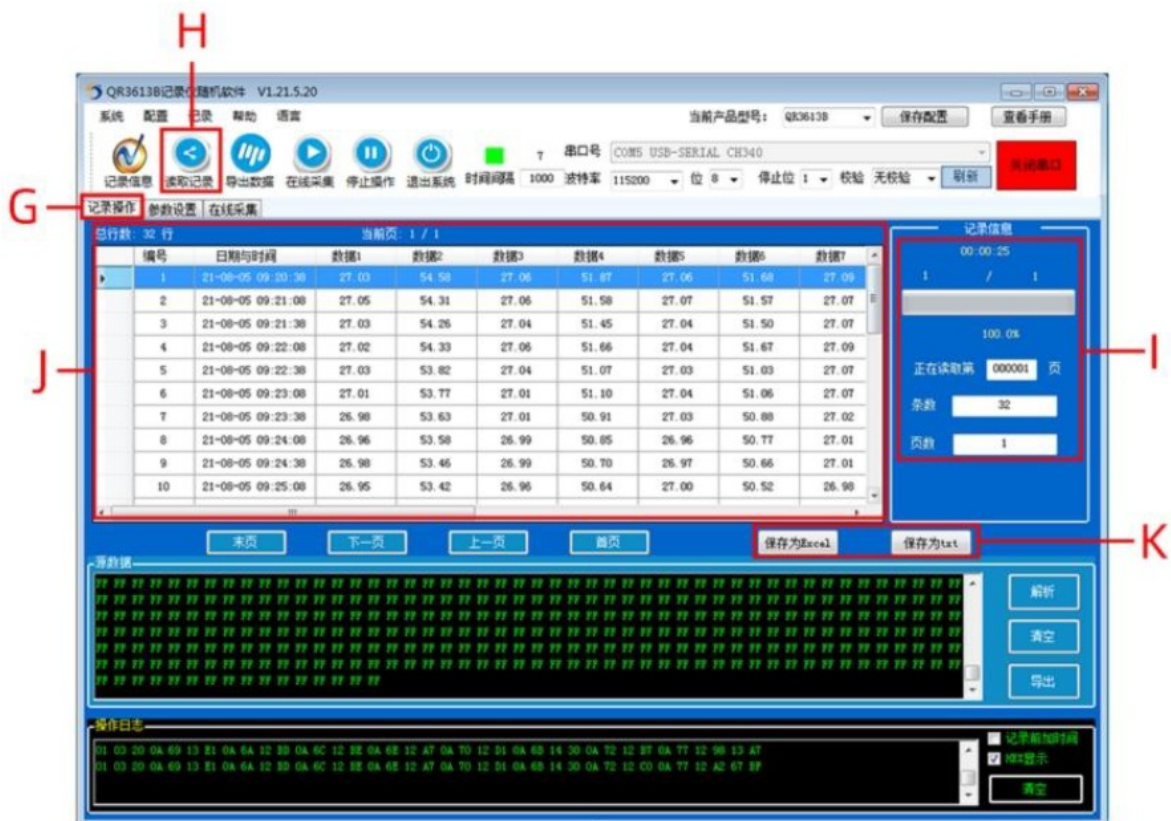
How to use



- **A:** After opening the software, enter the main interface, select the corresponding product model at the time of purchase, and save the settings after selection, in case you need to reselect it after opening it next time.
- **B:** Use the USB converter to insert the computer's USB2.0 interface, the driver will be installed automatically, If the installation fails, you can install it in the driver wizard software. After connecting to the computer, Select the serial port number: USB-SERIAL CH340 (COM5), set the baud rate Click to open the serial port to complete the connection.
- **CD:** After opening the serial port, click online collection (C) to see the real-time measurement data (D).



- **E:** Enter the parameter setting interface
- **F:** A variety of parameters can be set in the parameter setting, such as temperature and humidity correction, baud rate, upload time and other parameters. For the parameters on the right, you can click on “read all” to set the parameters on the recorder.

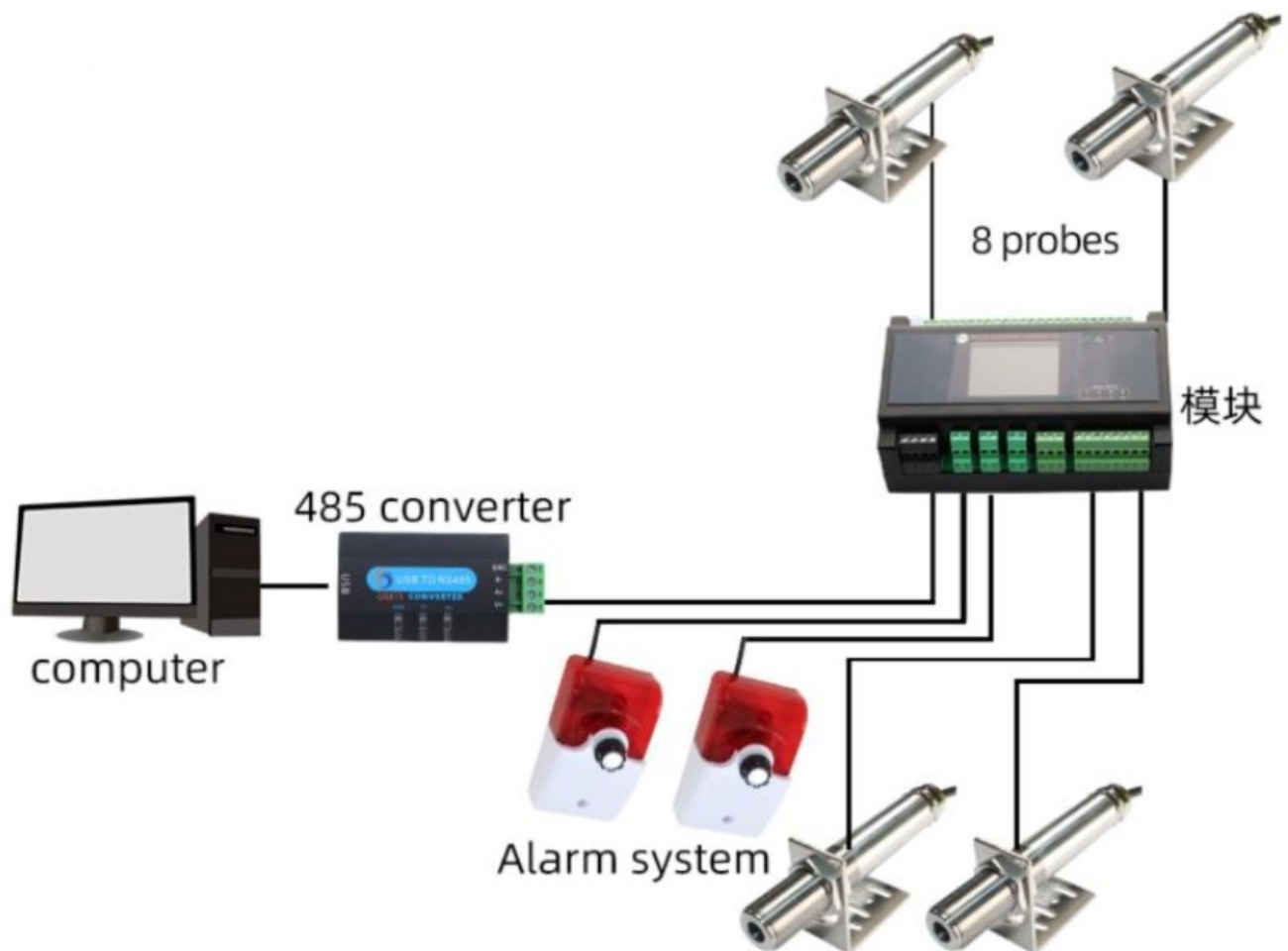


- **G:** Enter the record operation interface
- **H:** Click “Read Data” to start transferring the data on the recorder to the software.
- **I:** After the step (H), the number of read data, the total number of data, and the number of pages will be displayed at the top of the reading.
- **J:** The read data will be displayed on it

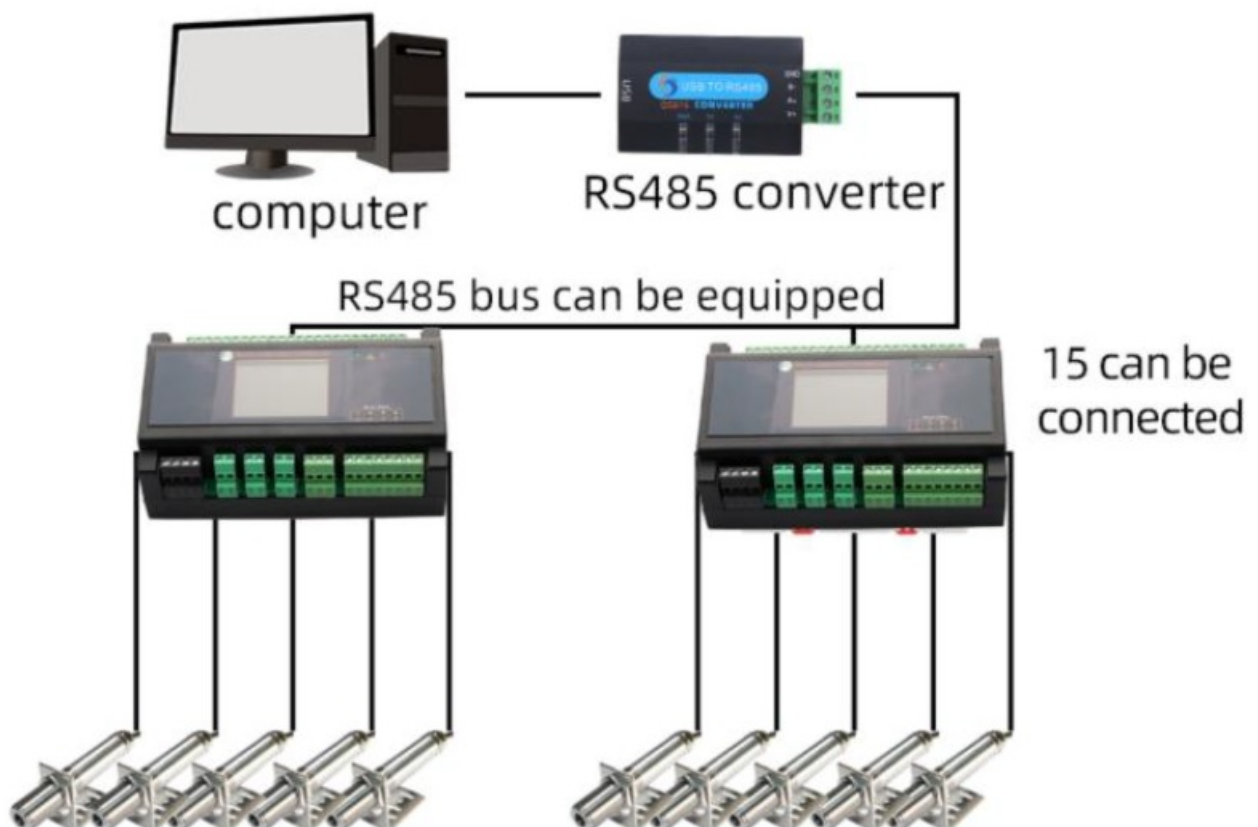
- K: You can export the read data in Excel or txt format

#	A	B	C	D	E	F	G	H	I	J	K	L	M	N	O	P	Q	R
1	II	Time	1#温度	2#温度	3#温度	4#温度	5#温度	6#温度	7#温度	8#温度	9#温度	10#温度	11#温度	12#温度	13#温度	14#温度	15#温度	16#温度
2	1	2021/8/5 9:20	27.63	54.58	27.06	51.87	27.96	51.68	27.09	51.45	27.12	51.83	27.05	55.15	27.13	51.58	27.17	51.32
3	2	2021/8/5 9:21	27.65	54.31	27.06	51.58	27.97	51.57	27.07	51.37	27.09	51.71	27.07	55.11	27.1	51.48	27.18	51.22
4	3	2021/8/5 9:21	27.63	54.26	27.04	51.45	27.94	51.5	27.07	51.29	27.09	51.6	27.05	54.95	27.1	51.39	27.15	51.09
5	4	2021/8/5 9:22	27.62	54.33	27.06	51.66	27.94	51.67	27.09	51.3	27.1	51.65	27.07	55.02	27.09	51.41	27.14	51.09
6	5	2021/8/5 9:22	27.63	53.82	27.04	51.07	27.93	51.03	27.07	50.85	27.1	51.18	27.04	54.49	27.09	50.95	27.13	50.64
7	6	2021/8/5 9:23	27.61	53.77	27.01	51.1	27.94	51.06	27.07	50.85	27.09	51.17	27	54.44	27.06	50.89	27.1	50.69
8	7	2021/8/5 9:23	26.98	53.63	27.01	50.91	27.93	50.88	27.02	50.63	27.05	50.95	25.98	54.3	27.05	50.69	27.11	50.38
9	8	2021/8/5 9:24	26.96	53.58	26.99	50.85	26.96	50.77	27.01	50.66	27.05	50.92	25.97	54.33	27.02	50.77	27.1	50.46
10	9	2021/8/5 9:24	26.98	53.46	26.99	50.7	26.97	50.66	27.01	50.5	27.02	50.74	25.96	54.15	27.04	50.55	27.1	50.2
11	10	2021/8/5 9:25	26.95	53.42	26.96	50.64	27	50.52	26.98	50.29	27	50.52	25.98	53.95	27.04	50.42	27.07	50.17
12	11	2021/8/5 9:25	26.91	53.28	26.92	50.56	26.94	50.32	26.96	50.12	27	50.45	25.93	53.88	27.01	50.3	27.04	50.06
13	12	2021/8/5 9:25	26.91	53.14	26.92	50.43	26.93	50.3	26.96	50.09	26.96	50.42	25.93	53.97	27.01	50.27	27.03	49.99
14	13	2021/8/5 9:25	26.89	53.02	26.9	50.09	26.93	50.17	26.93	49.94	26.96	50.24	25.89	53.69	26.99	50.09	27.03	49.75
15	14	2021/8/5 9:27	26.85	52.7	26.87	49.92	26.93	49.92	26.91	49.68	26.95	49.93	25.89	53.39	26.95	49.81	27	49.48
16	15	2021/8/5 9:27	26.84	52.77	26.86	49.96	26.87	49.91	26.93	49.71	26.92	49.99	25.87	53.5	26.95	49.81	26.99	49.4
17	16	2021/8/5 9:28	26.85	52.3	26.82	49.5	26.87	49.44	26.88	49.17	26.9	49.95	25.84	53.01	26.91	49.31	26.99	49.06
18	17	2021/8/5 9:28	26.79	52.38	26.81	49.62	26.86	49.5	26.87	49.26	26.89	49.69	25.84	53.08	26.88	49.45	26.94	49.19
19	18	2021/8/5 9:29	26.79	52.17	26.81	49.39	26.83	49.32	26.87	49.07	26.86	49.43	26.8	52.88	26.91	49.23	26.94	48.94
20	19	2021/8/5 9:29	26.78	51.95	26.75	49.21	26.8	49.15	26.81	48.92	26.83	49.25	25.77	52.67	26.85	49.01	26.92	48.76
21	20	2021/8/5 9:30	26.75	51.98	26.75	49.2	26.77	49.1	26.8	48.89	26.82	49.29	25.76	52.77	26.84	49.04	26.92	48.79
22	21	2021/8/5 9:30	26.75	51.95	26.73	49.1	26.75	49.02	26.77	48.75	26.79	49.09	25.74	52.59	26.84	48.88	26.99	48.63
23	22	2021/8/5 9:31	26.74	51.71	26.72	48.92	26.76	48.86	26.8	48.69	26.79	49.01	25.74	52.5	26.84	48.82	26.95	48.48
24	23	2021/8/5 9:31	26.72	51.73	26.71	48.91	26.76	48.86	26.76	48.69	26.81	49.08	25.74	52.49	26.82	48.87	26.95	48.61
25	24	2021/8/5 9:32	26.68	51.3	26.71	48.91	26.76	48.86	26.76	48.69	26.81	49.08	25.74	52.49	26.81	48.87	26.95	48.61
26	25	2021/8/5 9:33	26.56	51.23	26.71	48.91	26.76	48.86	26.76	48.69	26.81	49.08	25.74	52.49	26.81	48.87	26.95	48.61
27	26	2021/8/5 9:33	26.72	51.59	26.73	48.69	26.75	48.66	26.78	48.37	26.79	48.9	25.73	52.32	26.81	48.62	26.95	48.45
28	27	2021/8/5 9:34	26.72	51.5	26.72	48.66	26.73	48.66	26.74	48.38	26.78	48.73	26.7	52.17	26.81	48.49	26.95	48.2
29	28	2021/8/5 9:34	26.71	51.35	26.71	48.46	26.72	48.52	26.76	48.38	26.75	48.66	25.71	52.09	26.81	48.43	26.99	48.14
30	29	2021/8/5 9:35	26.68	51.47	26.71	48.65	26.73	48.68	26.76	48.51	26.77	48.89	25.73	52.3	26.77	48.46	26.95	48.21
31	30	2021/8/5 9:32	26.69	51.12	26.71	48.91	26.76	48.86	26.76	48.69	26.81	49.08	25.74	52.49	26.81	48.87	26.95	48.61
32	31	2021/8/5 9:37	26.69	51.07	26.71	48.16	26.69	48.09	26.71	47.93	26.75	48.24	26.7	51.74	26.78	48.09	26.83	47.84
33	32	2021/8/5 9:37	26.68	51.09	26.68	48.18	26.69	48.19	26.71	47.94	26.74	48.25	26.7	51.75	26.74	48.08	26.79	47.77

文本 - 记事本																	
文件(F) 编辑(E) 格式(O) 查看(V) 帮助(H)																	
序号	时间标识	1#温度	2#温度	3#温度	4#温度	5#温度	6#温度	7#温度	8#温度	9#温度	10#温度	11#温度	12#温度	13#温度	14#温度	15#	
1	21-08-05 09:20:38	27.03	54.58	27.06	51.87	27.06	51.68	27.09	51.45	27.12	51.83	27.05	55.16	27.13	51.58	27.17	51.32
2	21-08-05 09:21:08	27.05	54.31	27.06	51.58	27.07	51.57	27.07	51.37	27.09	51.71	27.07	55.11	27.10	51.48	27.18	51.22
3	21-08-05 09:21:38	27.03	54.26	27.04	51.45	27.04	51.50	27.07	51.29	27.09	51.60	27.05	54.95	27.10	51.39	27.16	51.09
4	21-08-05 09:22:08	27.02	54.33	27.06	51.66	27.04	51.67	27.09	51.30	27.10	51.66	27.07	55.02	27.09	51.41	27.14	51.09
5	21-08-05 09:22:38	27.03	53.82	27.04	51.07	27.03	51.03	27.07	50.85	27.10	51.18	27.04	54.49	27.09	50.95	27.13	50.64
6	21-08-05 09:23:08	27.01	53.77	27.01	51.10	27.04	51.06	27.07	50.85	27.09	51.17	27.00	54.44	27.06	50.89	27.10	50.69
7	21-08-05 09:23:38	26.98	53.63	27.01	50.91	27.03	50.88	27.02	50.63	27.05	50.95	26.98	54.30	27.05	50.69	27.11	50.38
8	21-08-05 09:24:08	26.96	53.58	26.99	50.85	26.96	50.77	27.01	50.66	27.03	50.92	26.97	54.33	27.02	50.77	27.10	50.46
9	21-08-05 09:24:38	26.98	53.46	26.99	50.70	26.97	50.66	27.01	50.50	27.02	50.74	26.98	54.16	27.04	50.55	27.10	50.20
10	21-08-05 09:25:08	26.95	53.42	26.96	50.64	27.00	50.52	26.98	50.29	27.00	50.62	26.98	53.95	27.04	50.42	27.07	50.17
11	21-08-05 09:25:38	26.91	53.28	26.92	50.56	26.94	50.32	26.96	50.12	27.00	50.45	26.91	53.88	27.01	50.30	27.04	50.06
12	21-08-05 09:26:08	26.91	53.14	26.92	50.43	26.93	50.30	26.96	50.09	26.96	50.42	26.93	53.97	27.01	50.27	27.03	49.99
13	21-08-05 09:26:38	26.89	53.02	26.90	50.09	26.93	50.17	26.93	49.94	26.96	50.24	26.89	53.69	26.99	50.09	27.03	49.75
14	21-08-05 09:27:08	26.85	52.70	26.87	49.92	26.93	49.92	26.91	49.68	26.95	49.93	26.89	53.39	26.95	49.81	27.00	49.48
15	21-08-05 09:27:38	26.84	52.77	26.86	49.96	26.87	49.91	26.93	49.71	26.92	49.99	26.87	53.50	26.95	49.81	26.99	49.40
16	21-08-05 09:28:09	26.85	52.30	26.82	49.50	26.87	49.44	26.88	49.17	26.90	49.55	26.84	53.01	26.91	49.31	26.99	49.06
17	21-08-05 09:28:39	26.79	52.38	26.81	49.62	26.86	49.50	26.87	49.26	26.89	49.69	26.84	53.08	26.88	49.45	26.94	49.19
18	21-08-05 09:29:09	26.79	52.17	26.81	49.39	26.83	49.32	26.87	49.07	26.86	49.43	26.80	52.88	26.91	49.23	26.94	48.94
19	21-08-05 09:29:40	26.78	51.95	26.75	49.21	26.80	49.15	26.81	48.92	26.83	49.25	26.77	52.67	26.85	49.01	26.92	48.76
20	21-08-05 09:30:10	26.75	51.98	26.75	49.20	26.77	49.10	26.80	48.89	26.82	49.29	26.76	52.77	26.84	49.04	26.92	48.79
21	21-08-05 09:30:40	26.75	51.95	26.73	49.10	26.75	49.02	26.77	48.75	26.79	49.09	26.74	52.59	26.84	48.88	26.89	48.63
22	21-08-05 09:31:11	26.74	51.71	26.72	48.92	26.76	48.86	26.80	48.69	26.79	49.01	26.74	52.50	26.84	48.82	26.95	48.48
23	21-08-05 09:31:41	26.72	51.73	26.71	48.91	26.76	48.86	26.76	48.69	26.81	49.08	26.74	52.49	26.81	48.87	26.95	48.61
24	21-08-05 09:32:11	26.68	51.30	26.71	48.91	26.76	48.86	26.76	48.69	26.81	49.08	26.74	52.49	26.81	48.87	26.95	48.61
25	21-08-05 09:33:00	26.56	51.23	26.71	48.91	26.76	48.86	26.76	48.69	26.81	49.08	26.74	52.49	26.81	48.87	26.95	48.61
26	21-08-05 09:33:52	26.72	51.59	26.73	48.69	26.75	48.66	26.78	48.37	26.79	48.90	26.73	52.32	26.81	48.62	26.95	48.45
27	21-08-05 09:34:22	26.72	51.50	26.72	48.66	26.73	48.66	26.74	48.38	26.78	48.73	26.70	52.17	26.81	48.49	26.95	48.20
28	21-08-05 09:34:53	26.71	51.35	26.71	48.46	26.72	48.52	26.76	48.38	26.75	48.66	26.71	52.09	26.81	48.43	26.99	48.14
29	21-08-05 09:35:23	26.68	51.47	26.71	48.65	26.73	48.68	26.76	48.51	26.77	48.89	26.73	52.30	26.77	48.46	26.95	48.21
30	21-08-05 09:32:48	26.69	51.12	26.71	48.91	26.76	48.86	26.76	48.69	26.81	49.08	26.74	52.49	26.81	48.87	26.95	48.61
31	21-08-05 09:37:27	26.69	51.07	26.71	48.16	26.69	48.09	26.71	47.93	26.75	48.24	26.70	51.74	26.78	48.09	26.83	47.84
32	21-08-05 09:37:57	26.68	51.09	26.68	48.18	26.69	48.19	26.71	47.94	26.74	48.25	26.70	51.75	26.74	48.08	26.79	47.77



Multi-module application scheme



How to use?



Product List



8 CHANNEL MODULE

Disclaimer

This document provides all information about the product, does not grant any license to intellectual property, does not express or imply, and prohibits any other means of granting any intellectual property rights, such as the statement of sales terms and conditions of this product, other issues. No liability is assumed. Furthermore, our company makes no warranties, express or implied, regarding the sale and use of this product, including the suitability for the specific use of the product, the marketability or the infringement liability for any patent, copyright or other intellectual property rights, etc. Product specifications and product descriptions may be modified at any time without notice.

Contact Us

Company: Shanghai Sonbest Industrial Co., Ltd TRANBALL Brand Division

Address: Building 8, No. 215 North east road, Baoshan District, Shanghai, China

Web: <http://www.qunbao.com>


Web: <http://www.tranball.com>

SKYPE: soobuu

Email: sale@sonbest.com

Tel: 86-021-51083595 / 66862055 / 66862075 / 66861077

Documents / Resources

	<p>SONBUS QC3651B Rail Type Color Screen Display 8 Channel Infrared Temperature Measuring Alarm [pdf] User Manual</p> <p>QC3651B, Rail Type Color Screen Display 8 Channel Infrared Temperature Measuring Alarm, QC3651B Rail Type Color Screen Display 8 Channel Infrared Temperature Measuring Alarm, Color Screen Display 8 Channel Infrared Temperature Measuring Alarm</p>
---	--

References

- [Home-ç³¼¼ä¿ç®µ©è”ç¹´](#)
- [Home-ç³¼¼ä¿ç®µ©è”ç¹´](#)
- [Home-ç³¼¼ä¿ç®µ©è”ç¹´](#)

Manuals+