



SONBEST SC7237B Interface LED Display Differential Pressure Controller User Manual

[Home](#) » [SONBEST](#) » SONBEST SC7237B Interface LED Display Differential Pressure Controller User Manual 



SC7237B

RS485 interface LED display differential pressure controller
User Manual

File Version: V23.8.2



SC7237B using the standard RS485 bus MODBUS-RTU protocol,easy access to PLC DCS and other instruments or systems for monitoring state quantities. The internal use of high-precision sensing core and related devices to ensure high reliability and excellent long-term stability,can be customized RS232,RS485,CAN,4-20mA,DC0~5V\10V,ZIGBEE,Lora,WIFI,GPRS and other output methods.

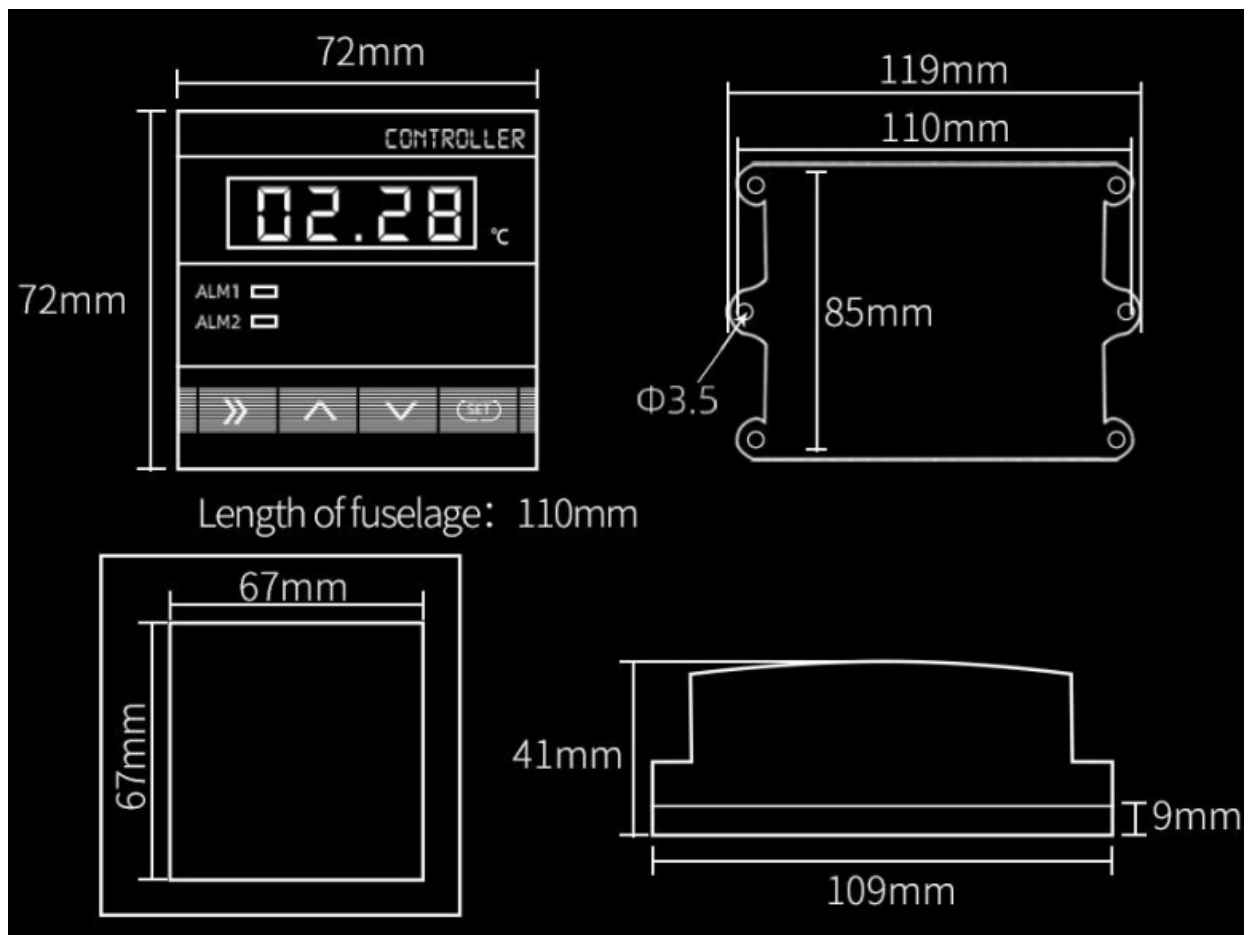
Contents

- [1 Technical Parameters](#)
- [2 Product Size](#)
- [3 Key details, quick start](#)
- [4 Flower farming](#)
- [5 GREEN HOUSE](#)
- [6 Construction](#)
- [7 Product List](#)
- [8 Documents / Resources](#)
 - [8.1 References](#)

Technical Parameters

Technical parameter	Parameter value
Brand	SONBEST
Measuring media	Non-corrosive gases
Gauge pressure measurement range	-100~0~100KPa
Differential Pressure Measurement Range	0~0.2~100KPa
Differential Pressure Measurement Accuracy	±0.5%FS
Communication Interface	RS485
Default baud rate	9600 8 n 1
Power	AC185~265V 1A
Running temperature	-30~85℃
Working humidity	5%RH~90%RH




Product Size



Key details, quick start

STANDARD MDDBUS-RTU PROTOCOL, THE DEFAULT BAUD RATE IS 9600, IN VALID, 8-BIT DATA BITS, SOFTWARE CAN CHANGE THE THRESHOLD AND OTHER PARAMETERS, THROUGH RS485 CAN QUERY REAL-TIME ILLUMINATION DATA.



	: Use the select key when setting
	:Up Key
	: Down Key
SET	: Set Key

Page 4 sets the alarm

mode 1: Over-limit Alarm

Mode 2: under-limit alarm

mode 3: over/under-limit action

Illumination display value X1000 = current value as shown in figure 3.63, indicating the current illumination value of 3630 lux



- Press SET to enter upper limit threshold settings press" " to select the position, press" "" V" to adjust the value mode 1,3, when the value is greater than the upper limit threshold relay 1 action upper limit threshold: the default value of 50000, the maximum value of 65000
- Press SET twice to enter the lower limit threshold settings press" " to select the position, press" " !" " to adjust the numerical value mode 2,3, when the value is less than the lower limit threshold relay 2 action lower limit threshold: default 0, maximum 65000
- Press SET three times to enter the control return settings press" " to select the position, press" " !" " " " to adjust the value of the default return difference 1000, the maximum 60000
- Press four sets to enter the control mode, press" " to select the position, press"! "" to adjust the numerical value rnode 1, above the upper threshold action mode 2, below the lower threshold action mode 3, above the upper threshold action/below the lower threshold action

Wiring instructions

In the case of broken wires, wire the wires as shown in the figure. If the product itself has no leads, the core color is for reference.

How to use software?

Flower farming



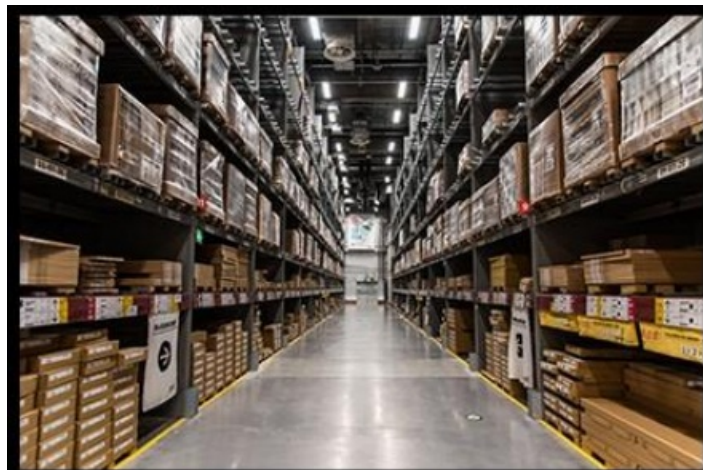
Flowerfarming requires light management According to the light requirements of plants
To cooperate with the sensor to control the illumination

GREEN HOUSE



Effective management with sensors Create a good light environment for crops
Promote better photosynthesis

Construction



A device for measuring levels of light intensity
Under certain circumstances
Strict illumination requirements are required

Product List



RS485 interface LED displa differential pressure controller



Certificate

Communication Protocol

The product uses RS485 MODBUS-RTU standard protocol format, all operation or reply commands are hexadecimal data. The default device address is 1 when the device leaves the factory, and the module or NON-Recorder default baud rate is 9600,8,n,1 ,but data recorder default baud rate is 115200 .

1. Read data (function code 0x03)

Inquiry frame (hexadecimal), sending example: query 1 data of 1# device, the upper computer sends the command: 01 03 00 00 00 01 84 0A.

Address	Function Code	Start Address	Data Length	Check Code
1	3	00 00	00 01	84 0A

For the correct query frame, the device will respond with data: 01 03 02 00 79 79 A6 , response format:

Address	Function Code	Length	Data 1	Check Code
1	3	2	00 79	79 A6

Data description: The data in the command is hexadecimal, take data 1 as an example, 00 79 is converted to

decimal value as 121, assuming the data magnification is 100, then the real value is 121/100=1.21, Others and so on.

2. Common data address table

For example, if the current state is too small, we want to add 1 to its real value, and add 100 to the current value. The correction operation command is: 01 06 00 6B 00 64 F9 FD .

Device Address	Function Code	Register Address	Target Address	Check Code
1	6	00 6B	00 64	F9 FD

After the operation is successful, the device will return the information: 01 06 00 6B 00 64 F9 FD , after the successful change, the parameters will take effect immediately.

Disclaimer


This document provides all information about the product, does not grant any license to intellectual property, does not express or imply, and prohibits any other means of granting any intellectual property rights, such as the statement of sales terms and conditions of this product, other issues. No liability is assumed. Furthermore, our company makes no warranties, express or implied, regarding the sale and use of this product, including the suitability for the specific use of the product, the marketability or the infringement liability for any patent, copyright or other intellectual property rights, etc. Product specifications and product descriptions may be modified at any time without notice.

Contact Us

Company: Shanghai Sonbest Industrial Co., Ltd
 Address:Building 8,No.215 North east road,Baoshan District,Shanghai,China
 Web: <http://www.sonbest.com>
 Web: <http://www.sonbus.com>
 SKYPE: soobuu
 Email: sale@sonbest.com
 Tel: 86-021-51083595 / 66862055 / 66862075 / 66861077

Shanghai Sonbest Industrial Co., Ltd

Documents / Resources



[SONBEST SC7237B Interface LED Display Differential Pressure Controller](#) [pdf] User Manual

SC7237B, SC7237B Interface LED Display Differential Pressure Controller, Interface LED Display Differential Pressure Controller, LED Display Differential Pressure Controller, Display Differential Pressure Controller, Differential Pressure Controller, Pressure Controller, Controller

References

- [Home-ŠæµæœăŠă@žă_šæœ%œé™ă...-ă_](#)
- [Home-SONBEST -SONBUS.COM| THE SENSOR COMPANY](#)
- [User Manual](#)

Manuals+. Privacy Policy

This website is an independent publication and is neither affiliated with nor endorsed by any of the trademark owners. The "Bluetooth®" word mark and logos are registered trademarks owned by Bluetooth SIG, Inc. The "Wi-Fi®" word mark and logos are registered trademarks owned by the Wi-Fi Alliance. Any use of these marks on this website does not imply any affiliation with or endorsement.