



SOMOGYI ML 100 Micro LED Smart String Lights Instruction Manual

[Home](#) » [SOMOGYI](#) » SOMOGYI ML 100 Micro LED Smart String Lights Instruction Manual 

Contents

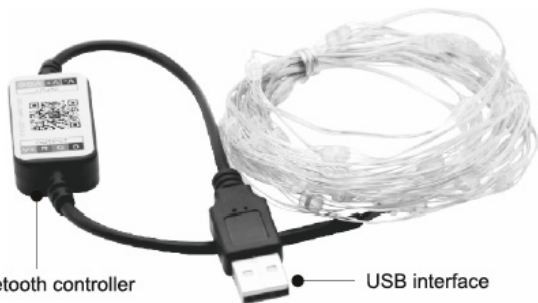
- [1 SOMOGYI ML 100 Micro LED Smart String Lights](#)
- [2 INSTALLATION AND USE](#)
- [3 PROGRAM DESCRIPTION](#)
- [4 INSTRUCTIONS FOR USE](#)
- [5 WARNING](#)
- [6 Documents / Resources](#)
- [7 Related Posts](#)





SOMOGYI ML 100 Micro LED Smart String Lights





INSTALLATION AND USE

- 1 

Bluetooth controller USB interface
- 2 
- 3 

LED BLE


- 4 

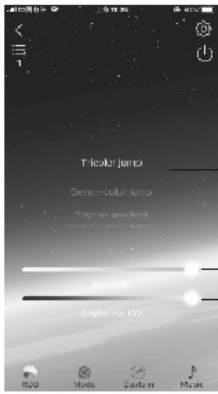
Return
Device List
Connections

Setting
Switch on/off

Select color

RGB value
Brightness slider

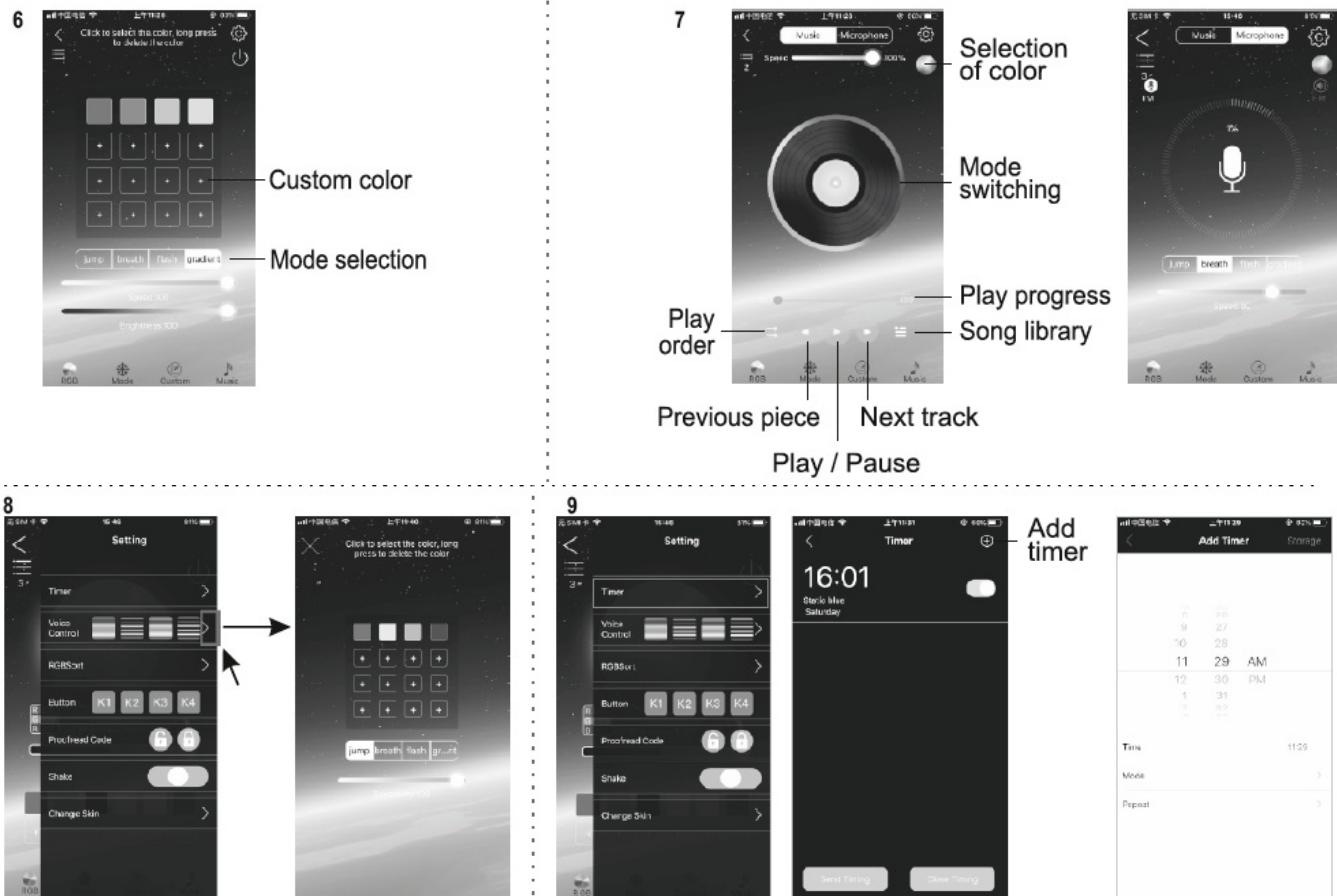
Color circle
switch

Custom color
- 5 

Mode
selection

Speed
adjustment

Brightness
adjustment



PROGRAM DESCRIPTION

EN
PROGRAM DESCRIPTION
colors
Tricolor
Seven-color
Red
Green
Blue
Yellow
Cyan
Purple
White
functions
Jump
Gradient
Flash
Static
Breathe

INSTRUCTIONS FOR USE

The string lights require Android 4.0 or iOS 10.0, or above.

1. The string lights are equipped with a USB connector and a Bluetooth controller built in the cabling.
2. Scan the QR code and download the LED LAMP app. Turn on the Bluetooth functionality on your phone, then connect the string lights to a USB socket with sufficient output capacity. Launch the app, which will automatically pair the string lights.
3. In the application, select the LED BLE option. You can safely delete all other icons.
The options available on the bar at the bottom are as follows:
4. **RGB:** on the color ring (RING), you can select a color, or set custom colors and brightness. Switch to the WHT DIM interface to adjust the brightness there.
5. **Mode:** Select the desired lighting program, or adjust the flashing speed or brightness. See the tables for an explanation of the programs.
6. **Custom:** You can create a custom program by selecting colors, setting the lighting program mode, or adjusting the flashing speed or brightness.
7. **Music:** You can choose from two options. One is Music mode, where the flashing of the string lights is influenced by the sound played on your phone. The other is Microphone (or Record) mode, where the lighting program is controlled by your phone's microphone.
8. **Setting:** You can set the timing, rhythm, RGB order, encoding, shake, or choose the wallpaper for the application here.
9. **Timer:** In this menu, you can set on and off times; multiple ones, and different ones for each day of the week even. You can also select the operating program. You can enable or disable the switching times set as described above by stepping one menu up.

WARNING

- Do not power up the product while in its packaging.
- Do not operate the product in its packaging.
- Do not replace the power cord. If it is damaged, the product must be disposed of.
- Do not connect these string lights electrically to other ones.
- The string lights cannot be installed in loops.
- Make sure to keep away the product from flammable materials during operation.
- The light bulbs in the product cannot be replaced; at the end of their lifecycle, the entire product must be disposed of.
- If light bulbs are damaged or break, stop using the product; unplug and dispose of it securely.
- Use the product only with a mains USB adapter or PowerBank of sufficient output capacity.
- When not in use, unplug the USB connector.
- Do not operate the string lights unattended.
- The product is intended for decorative lighting purposes, it is not designed to illuminate rooms in your home.
- The product is not a toy, keep it away from the reach of children.
- In case of any malfunction, immediately disconnect the string lights and contact a professional technician.

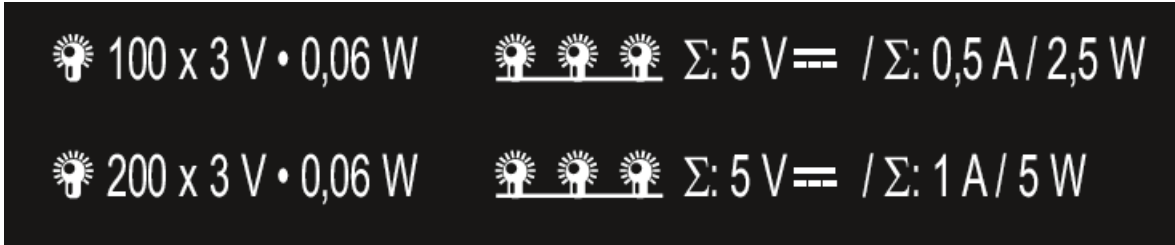
Only for use under dry, indoor conditions .

Waste equipment must be collected and disposed separately from household waste because it may contain

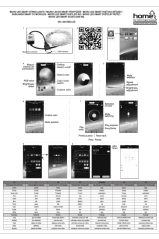
components hazardous to the environment or health. Used or waste equipment may be dropped off free of charge at the point of sale, or at any distributor which sells equipment of identical nature and function.

Dispose of the product at a facility specializing in the collection of electronic waste. By doing so, you will protect the environment as well as the health of others and yourself. If you have any questions, contact the local waste management organization. We shall undertake the tasks pertinent to the manufacturer as prescribed in the relevant regulations and shall bear any associated costs arising.

www.somogyi.hu



Documents / Resources



[SOMOGYI ML 100 Micro LED Smart String Lights](#) [pdf] Instruction Manual
ML 100, Micro LED Smart String Lights, ML 100 Micro LED Smart String Lights