



sOmfy TaHoma Switch Connected Controller Installation Guide

[Home](#) » [somfy](#) » sOmfy TaHoma Switch Connected Controller Installation Guide 



TaHoma switch
Installation guide

Welcome!
Start TaHoma switch
in a few steps



Contents

- 1 Pack content
- 2 Install TaHoma® app
- 3 Launch TaHoma® app
- 4 Plug power supply
- 5 Connect to the internet
- 6 Create your TaHoma® account or Log in
- 7 Documents / Resources
- 8 Related Posts

Pack content

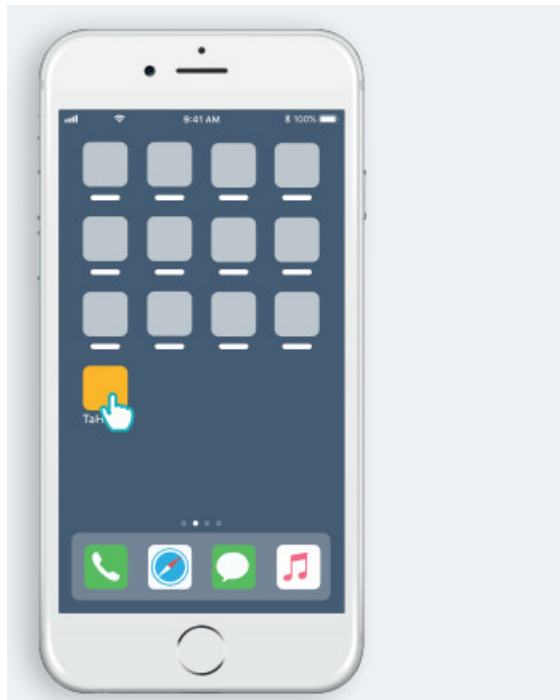


Install TaHoma® app

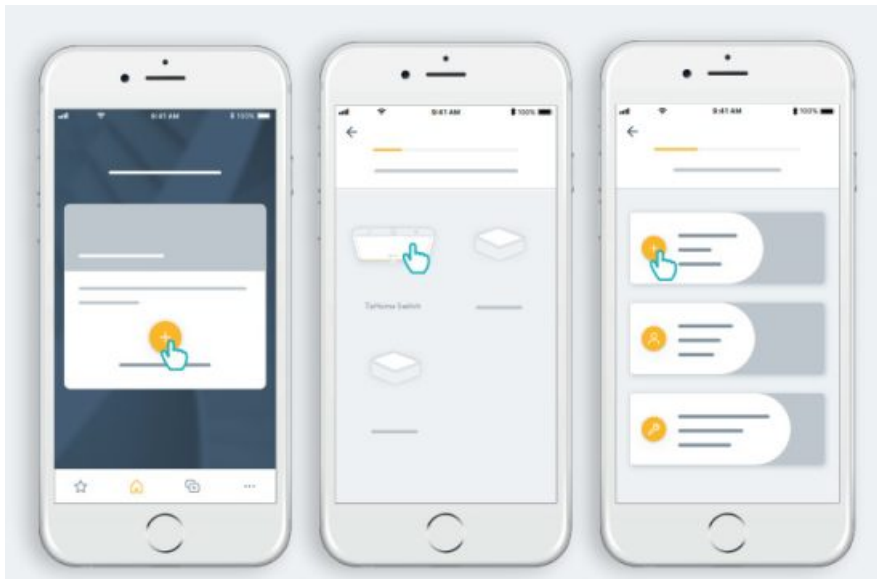


Launch TaHoma® app

Start

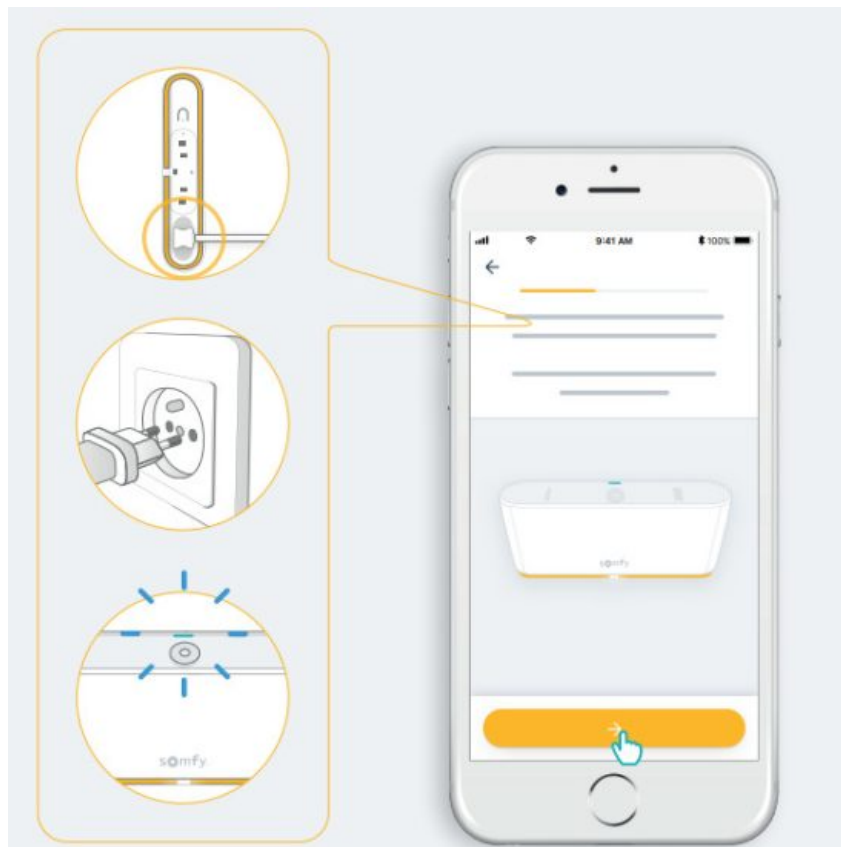


Open TaHoma® app
Start



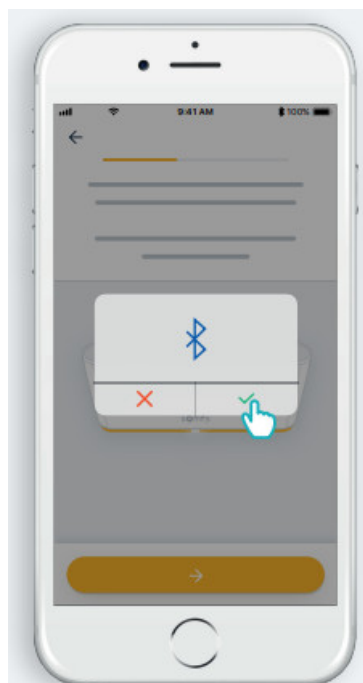
Start TaHoma switch installation

Plug power supply

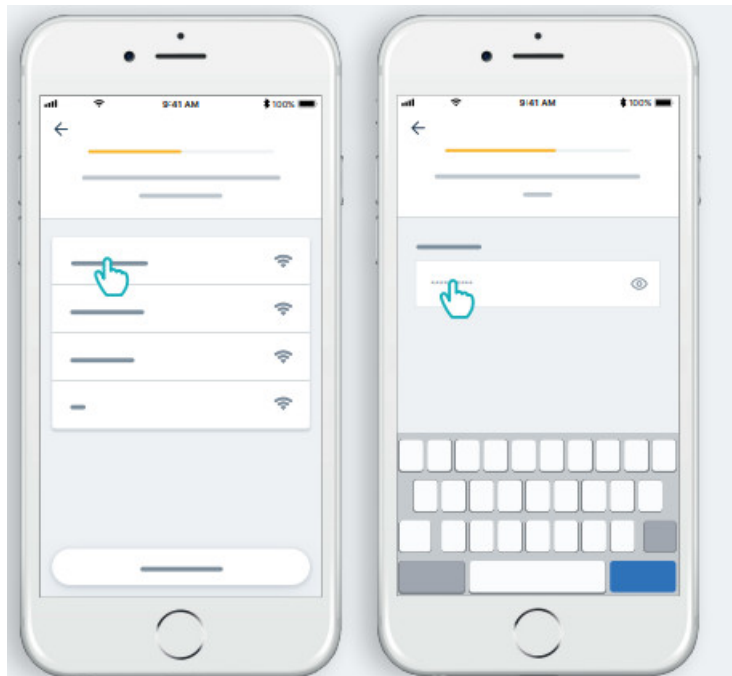


Connect to the internet

Your WiFi network must be in 2.4 GHz and secured with a password.

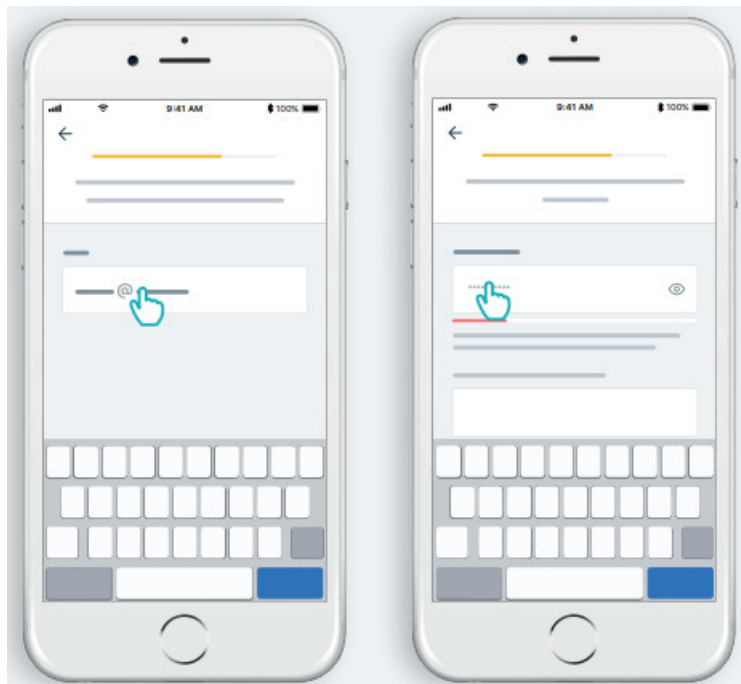


Accept Bluetooth



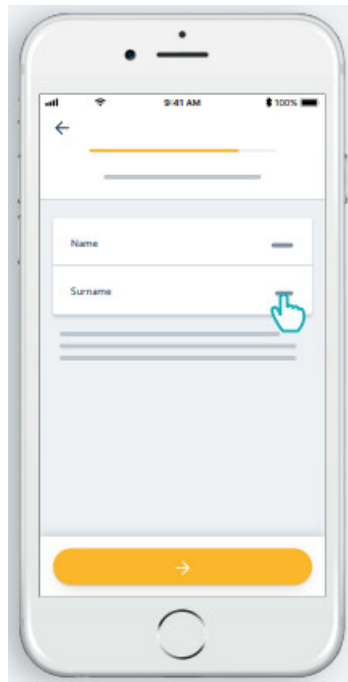
Select WiFi and enter a password

Create your TaHoma® account or Log in

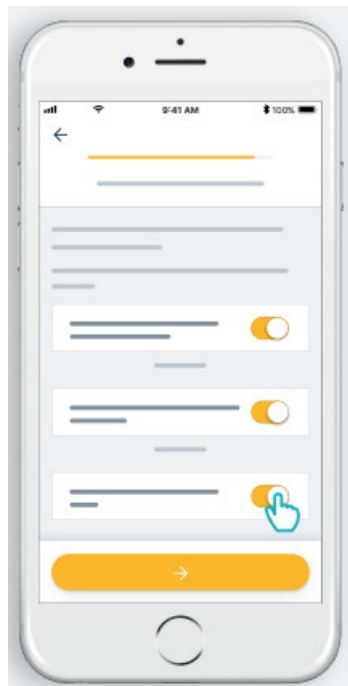


Enter your email address and password

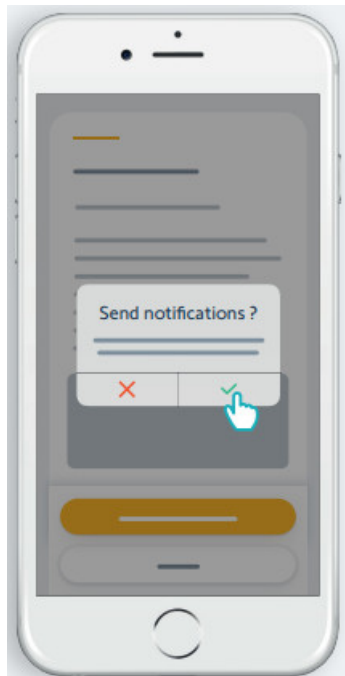
Follow the instructions



Enter your name

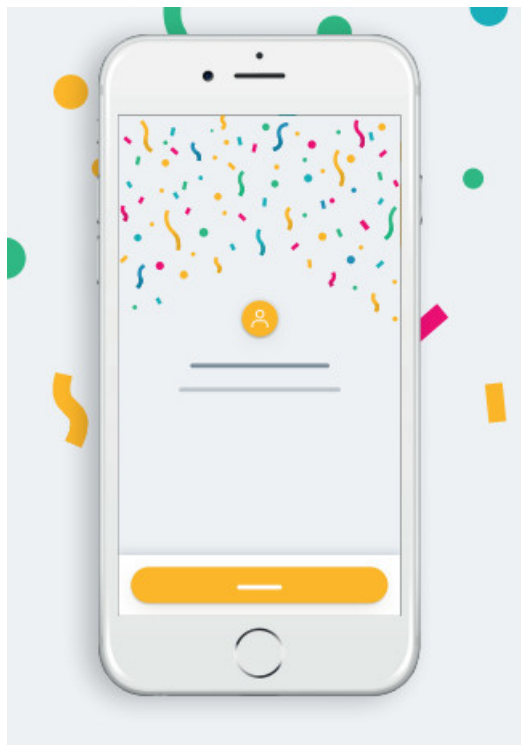


Accept Terms and conditions



Authorize notifications for a better experience

**Congratulations,
TaHoma switch is ready to use!**



Now :

- Add products,
- Configure the buttons of the TaHoma switch,
- Discover all the possibilities offered by the app!

Documents / Resources



[sOmfy TaHoma Switch Connected Controller](#) [pdf] Installation Guide
TaHoma Switch, Connected Controller, TaHoma Switch Connected Controller

[Manuals+](#)