



somfy Situo 1 Variation RTS Single Channel Remote Control User Manual

[Home](#) » [somfy](#) » somfy Situo 1 Variation RTS Single Channel Remote Control User Manual 



Variation RTS Single Channel Remote Control
User Manual



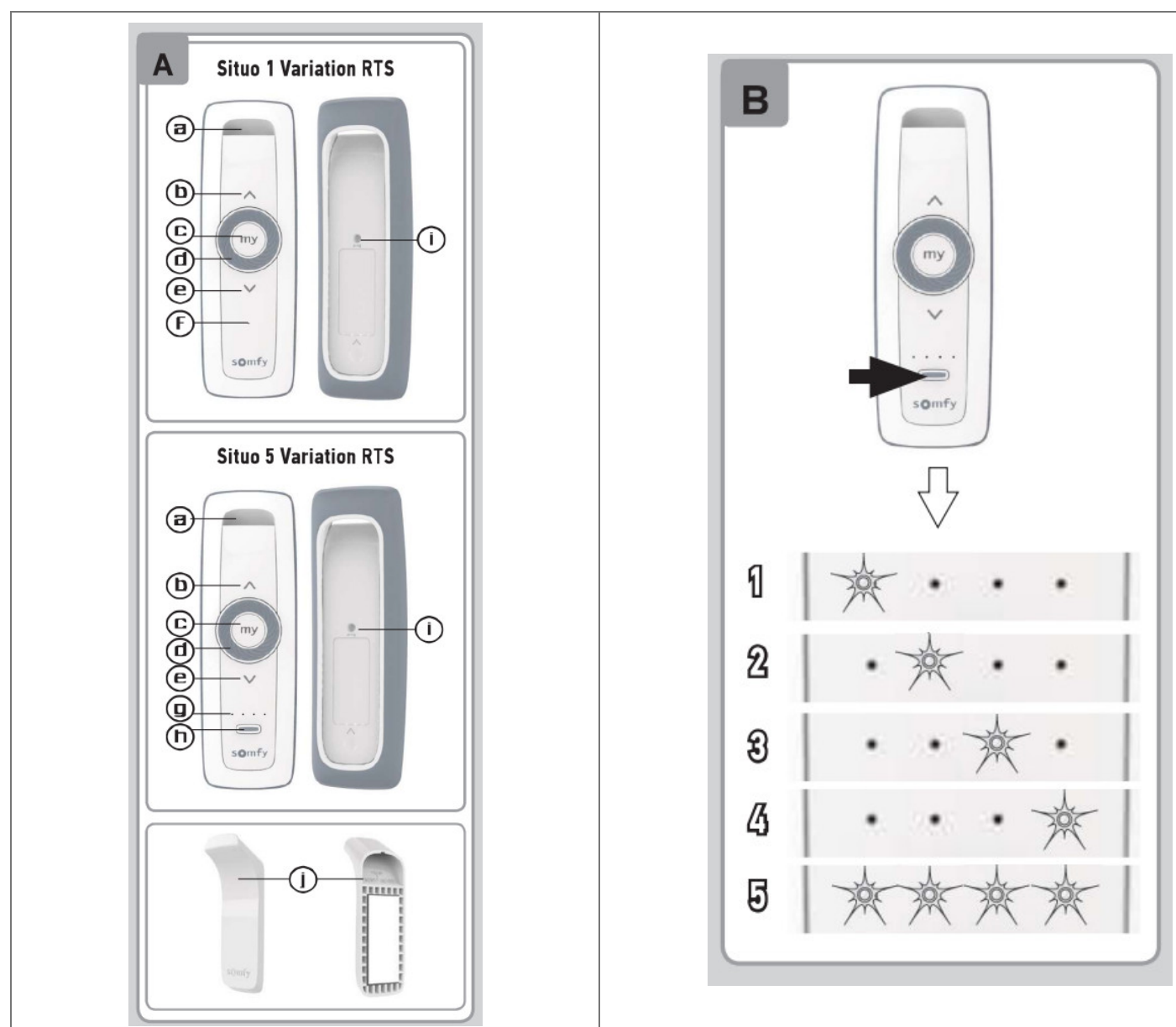
Contents

- [1 Situo 1 Variation RTS Single Channel Remote Control](#)
- [2 Safety and liability](#)
- [3 Selecting the groups on the RTS Situo 5 Variation \(FigureB\)](#)
- [4 Installation](#)
- [5 Use](#)
- [6 Technical data](#)
- [7 Documents / Resources](#)
- [8 Related Posts](#)

Situo 1 Variation RTS Single Channel Remote Control

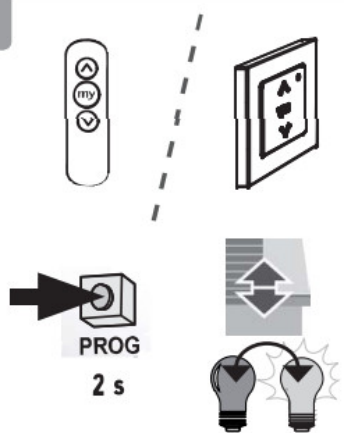
EN The RTS Situo 1 Variation allows a group of one or more applications to be controlled, The RTS Situo 5 Variation allows up to 5 groups of one or more applications to be controlled.

Safety and liability

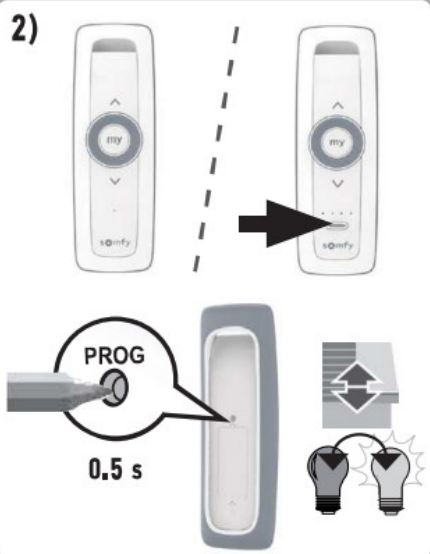


C

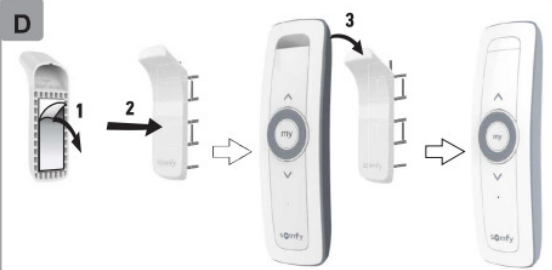
1)



2)



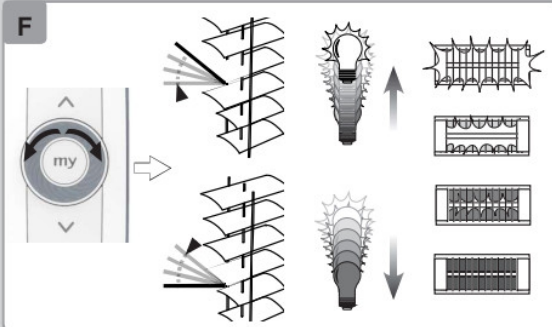
D



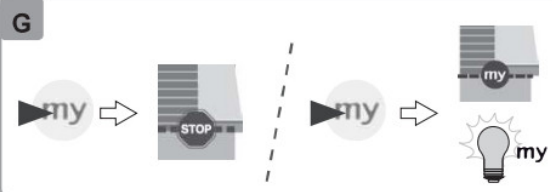
E

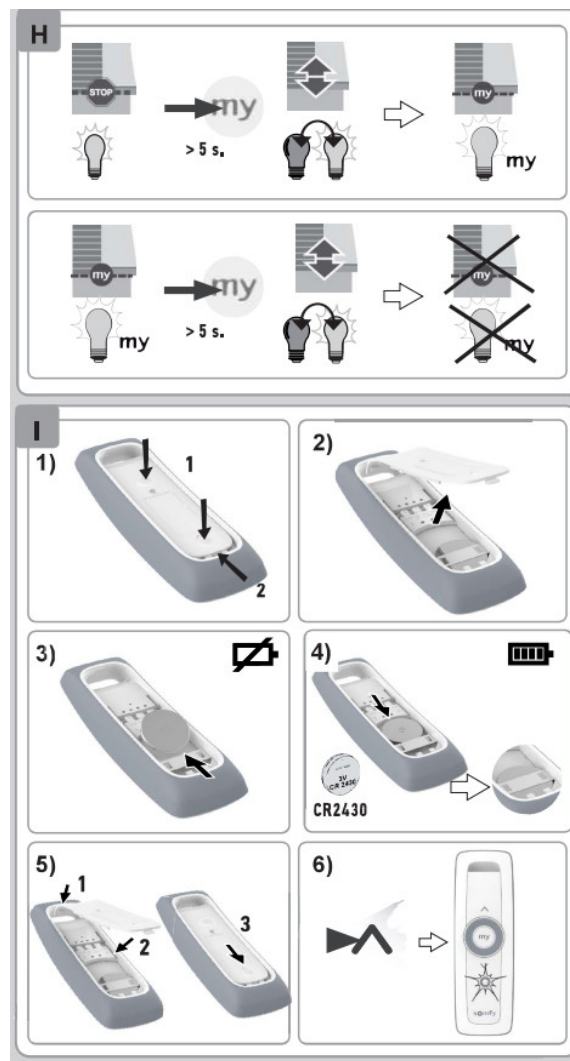


F



G





1. 1. Liability

These instructions must be kept by the user. Failure to follow these instructions or use of the product outside its field of application is forbidden, and will invalidate the warranty and discharge Somfy of all liability.

This Somfy product must be installed by a professional motorisation and home automation installer. Moreover, the installer must comply with the standards and legislation currently in force in the country in which the product is being installed, and inform his customers of the operating and maintenance conditions for the product. Never begin installing without first checking the compatibility of this product with the associated equipment and accessories. If in doubt when installing this product and/or to obtain additional information, contact a Somfy adviser or go to the website www.somfy.com.

1. 2. Safety instructions



Do not use or install this product outdoors.



Keep the product out of reach of children.



Do not knock or drop the product, expose it to flammable materials or sources of heat or moisture, or splash or immerse it.

2. The RTS Situo 1 Variation and the RTS Situo 5 Variation in detail (Figure A)

a. Wall mounting recess

b. Up/On/Open button

c. STOP/my button

- d. Variator
- e. Down/Off/Close button
- f. Key activation indicator light
- g. Key activation and group selection indicator lights
- h. Group selector
- i. PROG button
- j. Wall mounting.

Selecting the groups on the RTS Situo 5 Variation (Figure B)

Before using the RTS Situo 5 Variation, check that the correct group has been selected.

Press repeatedly on the group selector @ to select the correct group.

The indicator light @ for each group from 1 to 4 is lit individually then all the indicator lights are lit if group 5 is selected.

Installation

4. 1. Adding/deleting an RTS Situo Variation



program the first control refer to the Instructions for the RTS motor or receiver.

To add or delete the RIS Situo Variation to or from an application: (Figure C)

1. On the individual control already associated with the application:

- Press the PROG button (=2 s) until the application moves up and down,

2. On the RIS Situo Variation to be added or deleted.



For the RIS Situo 5 Variation, first select the group.

Briefly press the PROG button: the application moves up and down and the RTS Situo Variation is added or deleted,

EN 4.2. Fastening (Figure D)

1. Remove the protective film from the adhesive on the back of the wall mounting.
2. Fasten the wall mounting to a flat, clean and dry surface. Press for optimum bonding.
3. Place the RIS Situo Variation on the mounting.

Use



Before using the RIS Situo 5 Variation, check that the correct group has been selected.

5. 1. Group selector on the RTS Situo 5 Variation

This allows the group to be displayed and changed (5 groups are available)

- Short press: visualisation of the group selected.
- Press several times: change of group.(f)



Group 5: all 4 indicator lights come on together.

5. 2. Buttons A/V (Figure E)

Depending on the type of application to be operated:

- A Up/On/ Open
- V Down/Off/Close

5. 3. Variator (Figure F) Used to

- vary the angle of the adjustable slats on Venetian blinds

– vary the lighting and heating.



Scroll 1 notch slats tilted 1 notch, lighting and heating changed per variator notch, Scroll n notches: tilt the slats by n steps, vary the lighting and heating by steps.

5.4, STOP button /my (Figure G)

Briefly press my to stop the application from being activated.

If the application has been stopped, briefly press my to activate it until the favourite position (my).

5.5, Setting, modifying or deleting the favourite position (my) (Figure H).

Place the application in the required position then press my (+ 5 s) to set the favourite position (my).

Place the application in the favourite position (my) and press my (= 5 s) to delete it.

Tips and recommendations

To replace the last RTS control point lost or broken, contact a motorisation and home automation professional.

Replacing the battery (Figure I)

Following the figure, remove the rear panel from the remote control, replace the battery with a new one with the same characteristics then close the panel.



Risk of explosion if the battery is replaced by an incorrect type.



Keep new and used batteries away from children.



Do not ingest battery. If the battery is swallowed, it can cause chemical burns in just 2 hours and can lead to death. If you think this occurred, call a doctor immediately. If the battery compartment does not close securely, stop using the product and keep it away from children.



Do not throw onto a fire as there is a risk of explosion.



Please separate storage cells and batteries from other types of waste and recycle them via your local collection facility.



We care about our environment. Do not dispose of the appliance with usual household waste. Give it to an approved collection point for recycling.

Technical data

Frequency range and maximum power used: 433.050 MHz – 434.790 MHz e.r.p. <10 mW Radio range: 20 m between two walls. Operating temperature: 0°C to +50°C Power supply: 1 type CR2430 battery, 3 V.

SOMFY ACTIVITES SA hereby declares that the radio equipment covered by these instructions is in compliance with the requirements of the Radio Directive 2014/53/EU and the other essential requirements of the applicable European directives. The full text of the EU Declaration of Conformity is available at www.somfy.com/ce.

somfy®

www.somfy.com

Ref.5138967A





[somfy Situo 1 Variation RTS Single Channel Remote Control](#) [pdf] User Manual
Situo 1 Variation RTS Single Channel Remote Control, Situo 1 Variation RTS, Single Channel Remote Control, Channel Remote Control, Remote Control, Control