



# sOmfy Situo 1-2 5 RTS II 1 Channel RTS Protocol Remote Control User Guide

[Home](#) » [somfy](#) » sOmfy Situo 1-2 5 RTS II 1 Channel RTS Protocol Remote Control User Guide 



Situo 1 RTS 11  
Situo 5 RTS 11  
Short nstallation guide

## Contents

- [1 Situo 1-2 5 RTS II 1 Channel RTS Protocol Remote Control](#)
- [2 In detail \(Figure \[A\]\)](#)
- [3 Selection of groups \(Figure \[B\]\)](#)
- [4 Installation](#)
- [5 Replacing the battery \(Figure \[E\]\)](#)
- [6 Technical data](#)
- [7 Documents / Resources](#)
  - [7.1 References](#)

**Situo 1-2 5 RTS II 1 Channel RTS Protocol Remote Control**



#### From the Application

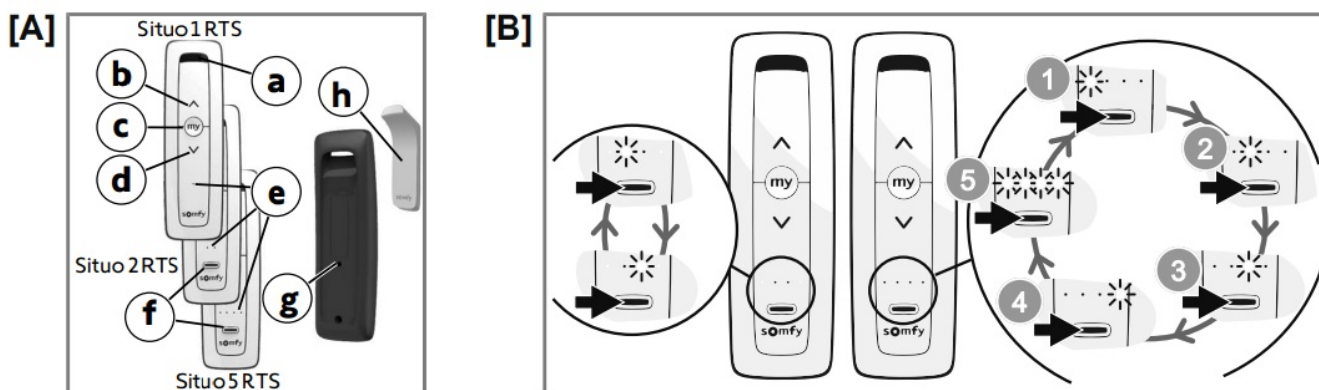
“Help me by Somfy” scan the QR code here to find complete setting instructions.



Complete instruction guide (advanced settings, tips and advice) available online on [www.somfy.info](http://www.somfy.info). Please read this guide carefully before installing or using this product. Please also comply with the instructions set out in the enclosed Safety instructions document.

### In detail (Figure [A])

- a) Wall bracket recess
- b) Up button (allows the application to be raised, switched on or opened).
- c) Stop/my button (allows the application to be stopped or moved to the favourite position}.
- d) Down button (allows the application to be lowered, switched off or closed).
- e) Feedback LED
- f) Channel selector
- g) PROG button
- h) Wall bracket



### Selection of groups (Figure [B])

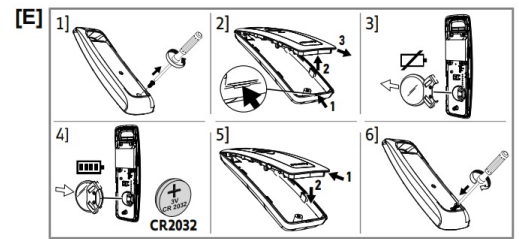
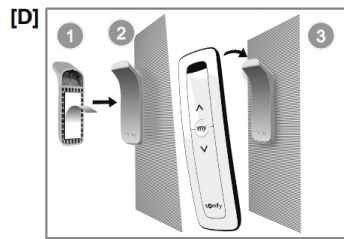
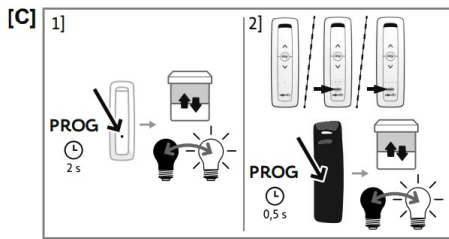
Situo 2 RTS II and Situo 5 RTS II possess respectively 2 and 5 channels to drive the product. Before using Situo 2 RTS II and Situo 5 RTS II check that the correct group has been selected.

### Installation

#### 3.1. Adding/Deleting Situo RTS (Figure [C])

#### 3.2. Wall mounting (Figure [D])

Take the wall bracket, remove the protective film from the adhesive on the back of the wall mounting. Press it on a flat, clean and dry surface. Make sure it is firmly fastened to the surface.



## Replacing the battery (Figure [E])



**DANGER**

Read the Safety instructions document.

Explosion risk if the battery is replaced by an incorrect type.

Insert 1 type CR2032 battery, 3 V, with the plus (+) side visible. Ensure you comply with the polarity. The power supply terminals must not be short-circuited.

## Technical data

Frequency bands and maximum power used: 433.050 MHz – 434.790 MHz.

US and Canada maximum e.r.p.< 63 pW.

Other countries maximum e.r.p.<10 mW.

## Radio range

— The environment in which the product is used might reduce the radio range.

— For a single-channel control point: 50 m in free field. The use in the same room as the controlled products is recommended.

— For multichannel control point (Except for the United States and Canada): 150 m in free field. The use on the same floor as the controlled products is recommended.

\*For the United States and Canada, the radio range of multi-channel control points is similar to that of single-channel control points.

Operating temperature: 0°C (+32°F) to +48°C (+118.4°F).

Power supply: 1 x type CR2032 battery, 3 V.



SOMFY ACTIVITES SA, 74300 CLUSES FRANCE hereby declares that the radio equipment covered by these instructions is in compliance with the requirements of Radio Directive 2014/53/EU and the other essential requirements of the applicable European Directives. The full text of the EU Declaration of Conformity is available at [www.somfy.com/ce](http://www.somfy.com/ce).



Somfy limited, Yeadon L819 7ZA UK, hereby declares that the radio equipment covered by these instructions is in compliance with the requirements of UK legislation: the Radio Equipment Regulations S.I. 2017 N°1206. The full text of the UKCA declaration of conformity is available at [www.somfy.co.uk](http://www.somfy.co.uk).



FCC warning statement:

-This device complies with Part 15 of the FCC Rules.

Operation is subject to the following two conditions: (1) This device may not cause harmful interference, and (2) This device must accept any interference received, including interference that may cause undesired operation.

— This equipment complies with FCC radiation exposure limits set forth for an uncontrolled environment. End users must follow the specific operating instructions for satisfying RF exposure compliance.

This transmitter must not be co-located or operating in conjunction with any other antenna or transmitter.

— Changes or modifications not expressly approved by the party responsible for compliance could void the user's authority to operate the equipment.

This device complies with Industry Canada's licence-exempt RSSs.

Operation is subject to the following two conditions:

(1) This device may not cause interference; and (2) This device must accept any interference, including interference that may cause undesired operation of the device.



Help me by Somfy

**SOMFY ACTIVITES SA**

50 avenue du Nouveau Monde

FRANCE – 74300 Cluses

[www.somfy.com](http://www.somfy.com)



5171154A

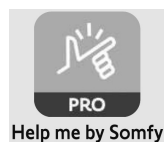
**somfy®**

**Situo 5 Soliris**

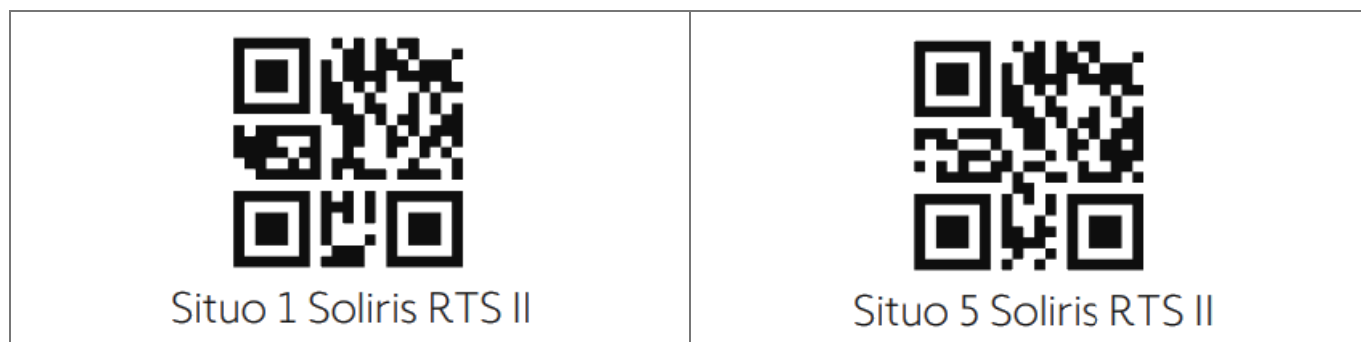
**RTS II**



**Short nstallationguie**



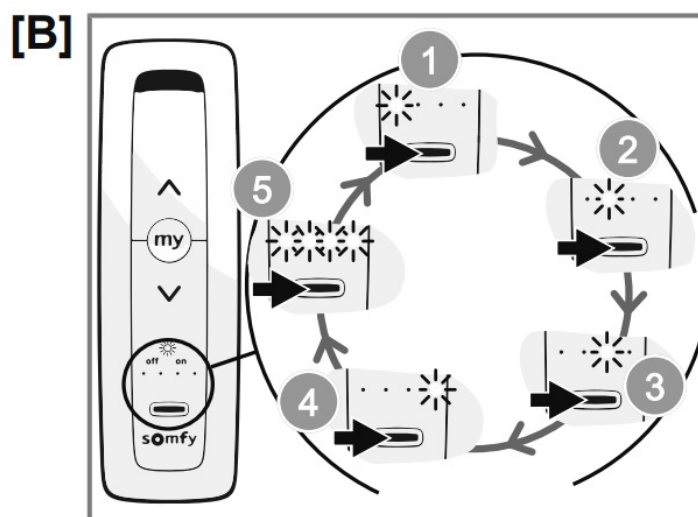
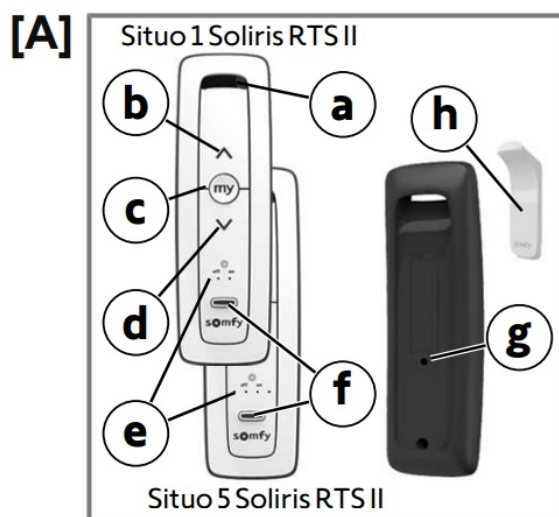
From the Application “Help me by Somfy” scan the QR code here to find complete setting instructions.



Complete instruction guide (advanced settings, tips and advice) available online on . Please read this guide carefully before installing or using this product. Please also comply with the instructions set out in the enclosed Safety instructions document.

## 1. In detail (Figure [A])

- a) Wall bracket recess
- b) Up button (allows the application to be raised, switched on or opened).
- c) Stop/my button (allows the application to be stopped or moved to the favourite position).
- d) Down button (allows the application to be lowered, switched off or closed).
- e) Feedback LED
- f) Channel selector (short press) and automatic sunlight management (long press)
- g) PROG button
- h) Wall bracket

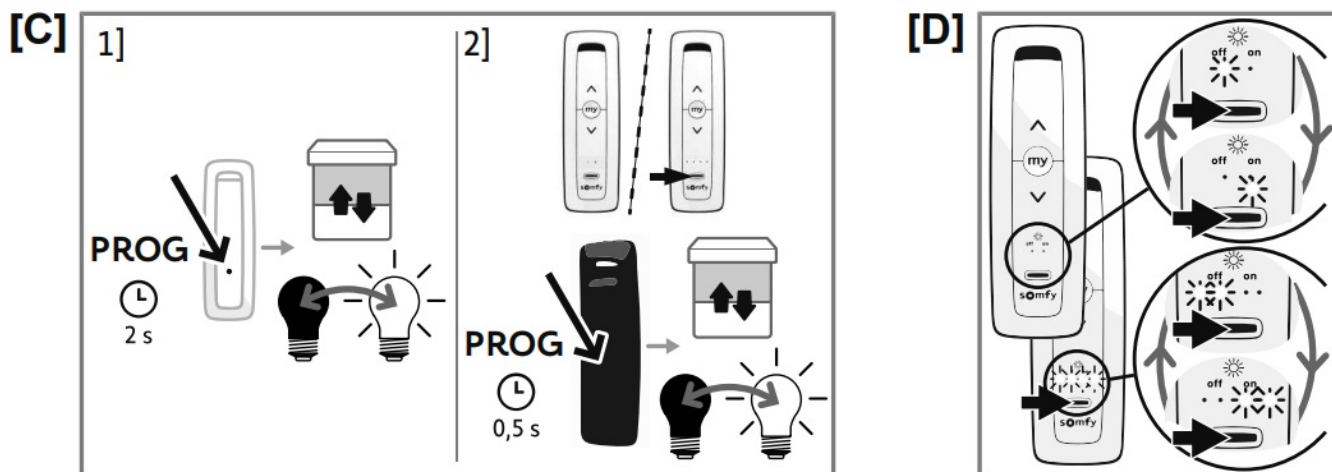


## 2. Selection of groups (Figure [B])

Before using Situo Soliris RTS II, check that the correct group has been selected.

### 3. Installation

#### 3.1. Adding/ Deleting Situo Soliris RTS II (Figure [C])

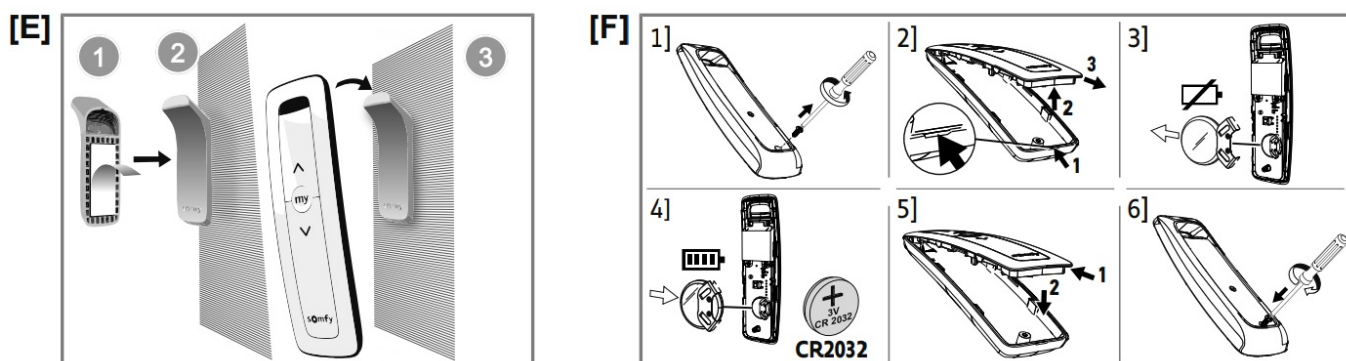


### 3.2. Activation/Deactivation of the automatic sunlight device (Figure [D])

On Situo 5 Soliris RTS, before activating or deactivating automatic sunlight, first select channel 5 (all LEDs are on). To activate “On” or deactivate “Off” the automatic sunlight device: press and hold (f) button until indicator (e) light(s) change status.

### 3.3. Wall mounting (Figure [E])

Take the wall bracket, remove the protective film from the adhesive on the back of the wall mounting. Press it on a flat, clean and dry surface. Make sure it is firmly fastened to the surface.



### 4. Replacing the battery (Figure [F])



#### **DANGER**

Read the Safety instructions document.

Explosion risk if the battery is replaced by an incorrect type.

Insert 1 type CR2032 battery, 3 V, with the plus (+) side visible. Ensure you comply with the polarity. The power supply terminals must not be short-circuited.

### 5. Technical data

Frequency bands and maximum power used: 433.050 MHz – 434.790 MHz.

US and Canada maximum e.r.p.< 63 pW.

Other countries maximum e.r.p.<10 mW.

#### **Radio range**

— The environment in which the product is used might reduce the radio range.

— For a single-channel control point: 50 m in free field. The use in the same room as the controlled products is recommended.

— For multichannel control point (Except for the United States and Canada): 150 m in free field. The use on the same floor as the controlled products is recommended.

“For the United States and Canada, the radio range of multi-channel control points is similar to that of single-channel control points.



Operating temperature: 0°C (+32°F) to +48°C (+118.4°F).

Power supply: 1 x type CR2032 battery, 3 V.

**CE** SOMFY ACTIVITES SA, 74300 CLUSES FRANCE hereby declares that the radio equipment covered by these instructions is in compliance with the requirements of Radio Directive 2014/53/EU and the other essential requirements of the applicable European Directives. The full text of the EU Declaration of Conformity is available at [www.somfy.com/ce](http://www.somfy.com/ce).

**UK  
CA** Somfy limited, Yeadon LS19 7ZA UK, hereby declares that the radio equipment covered by these instructions is in compliance with the requirements of UK legislation: the Radio Equipment Regulations S.1. 2017 N°1206. The full text of the UKCA declaration of conformity is available at [www.somfy.co.uk](http://www.somfy.co.uk).

**FCC** **FCC warning statement:**

-This device complies with Part 15 of the FCC Rules. Operation is subject to the following two conditions:

(1) This device may not cause harmful interference, and (2) This device must accept any interference received, including interference that may cause undesired operation.

– This equipment complies with FCC radiation exposure limits set forth for an uncontrolled environment. End users must follow the specific operating instructions for satisfying RF exposure compliance. This transmitter must not be co-located or operating in conjunction with any other antenna or transmitter.

– Changes or modifications not expressly approved by the party responsible for compliance could void the user's authority to operate the equipment.

This device complies with Industry Canada's licence-exempt RSSs. Operation is subject to the following two conditions:

(1) This device may not cause interference; and (2) This device must accept any interference, including interference that may cause undesired operation of the device.



Help me by Somfy



5171312A

**SOMFY ACTIVITES SA**

50 avenue du Nouveau Monde

FRANCE – 74300 Cluses

[www.somfy.com](http://www.somfy.com)

## Documents / Resources

	<a href="#">sOmfy Situo 1-2 5 RTS II 1 Channel RTS Protocol Remote Control</a> [pdf] User Guide Situo 1-2 5 RTS II 1 Channel RTS Protocol Remote Control, Situo 1-2 5 RTS II, 1 Channel RTS Protocol Remote Control, RTS Protocol Remote Control, Protocol Remote Control, Remote Control
--	--

## References



- [User Manual](#)

[Manuals+](#), [Privacy Policy](#)