



sOmfy IFTTT Tahoma RTS Zigbee Smartphonr and Tablet Interface Installation Guide

[Home](#) » [somfy](#) » sOmfy IFTTT Tahoma RTS Zigbee Smartphonr and Tablet Interface Installation Guide 





VERSION 1.2 | AUGUST 2021 | Prepared by PROJECT SERVICES

Contents

1 OVERVIEW

1.1 INTRODUCTION

1.2 RESOURCES & APPLICATIONS

2 SETUP

2.1 SMARTPHONE or TABLET REQUIREMENTS

2.2 CONNECTIONS & INDICATORS

2.3 SYSTEM CONFIGURATION

2.4 CONNECT IFTTT TO TAHOMA

2.5 CREATE AN APPLETT

2.6 DISCONNECT IFTTT FROM TAHOMA

3 Documents / Resources

4 Related Posts

OVERVIEW

INTRODUCTION

The Somfy Organization strength has been demonstrated with 50 years of experience in motorization. As leaders in the shading industry with innovation and modernization solutions for homes and commercial buildings, Somfy offers the widest range of strong, quiet motors and controls for all types of applications and technologies.

Who is this Guide for?

This guide is aimed at providing support and guidance to homeowners, installers and dealers for achieving

complete automation of Radio Technology Somfy® (RTS) motors and TaHoma® Smartphone and Tablet Interface.

What does this Guide contain?

The sections of this guide contain walkthroughs and methods of controlling RTS motors using the TaHoma® Smartphone and Tablet Interface as the bridge between IFTTT and the Smart Shading by Somfy.

This guide discusses the method of integration with IFTTT.

For questions or assistance please contact technical support: (800) 22-SOMFY (76639)

technicalsupport_us@somfy.com

How should this Guide be used?

This guide is intended to be used as a reference manual.

RESOURCES & APPLICATIONS

Visit www.somfypro.com for the following guides:

- Somfy TaHoma Smartphone and Tablet Interface Programming Guide
- Somfy RTS Pocket Programming Guide

Subscribe to the Somfy YouTube Channel www.youtube.com/somfysystems

Visit the Google Play or iOS App Store for the Somfy TaHoma North America App:



Google Play Store



iOS App Store

https://play.google.com/store/apps/details?id=com.somfy.beecon&hl=en_CA&gl=US
<https://apps.apple.com/us/app/tahoma-north-america/id1437975616>



Google Play Store



iOS App Store

https://play.google.com/store/apps/details?id=com.ifttt.ifttt&hl=en_CA&gl=US
<https://apps.apple.com/us/app/ifttt/id660944635>

SETUP

The Somfy TaHoma® Smartphone and Tablet Interface provides a single platform for Somfy RTS and future

ecosystems with a wide range of interior and exterior applications.

- The TaHoma® Interface supports up to 40 RTS channels
- Install up to 10 interfaces as zone controllers to increase the RTS range
 - The TaHoma® can support a maximum of 40 scenes with schedules per install

Each TaHoma Interface is connected to Wi-Fi or directly to the local area network by an optional Ethernet Adaptor for IP Integration with third-party control systems. TaHoma® is compatible with the Somfy Synergy™ API. Details of this controller and commissioning instruction are available in the Somfy TaHoma Smartphone and Tablet Interface Programming Guide.

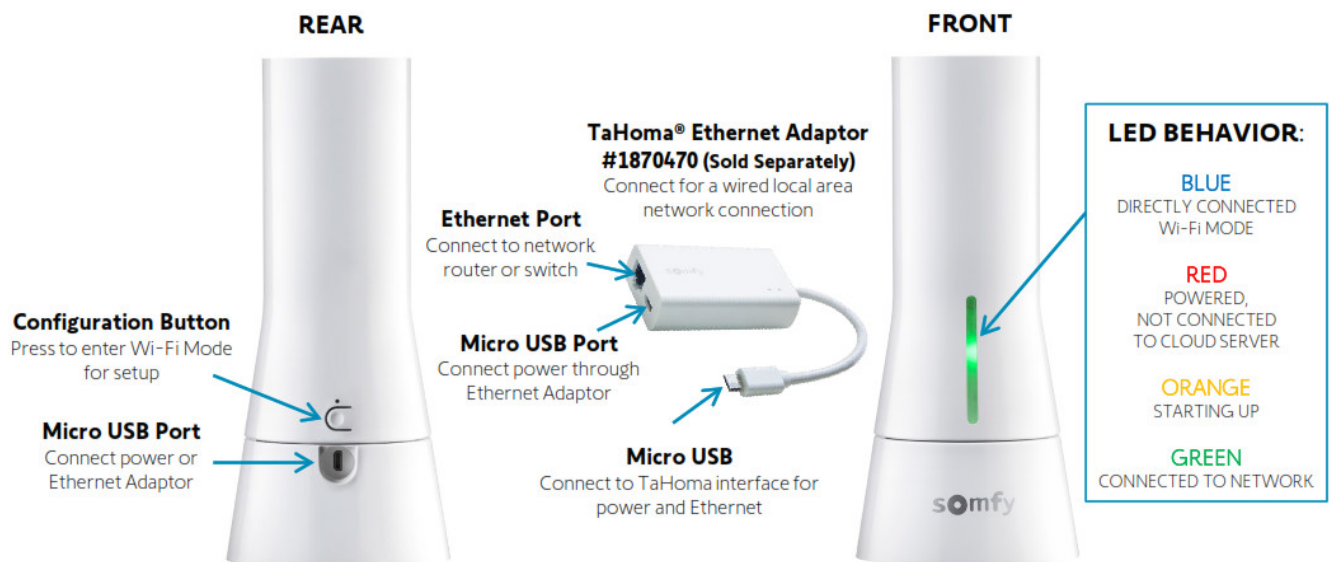
SMARTPHONE or TABLET REQUIREMENTS

The TaHoma app is compatible with the following operating systems and software versions:

IOS 11.0+

Android 7.0+

CONNECTIONS & INDICATORS



SYSTEM CONFIGURATION

A fully operational TaHoma system is required prior to IFTTT programming. The TaHoma Interface supports up to 40 channels of RTS. RTS devices programmed to an RTS channel will only receive commands from the associated TaHoma Interface. Interfaces must be placed within 25-35' of the RTS devices they control.

- Confirm with Shade Commissioning Agent that the TaHoma Interface firmware is up to date
- Must have IFTTT credentials
- This guide is based on the Free Standard account for IFTTT (Maximum of 3 custom Applets)

CONNECT IFTTT TO TAHOMA

To link IFTTT to TaHoma North America App, follow the steps below:

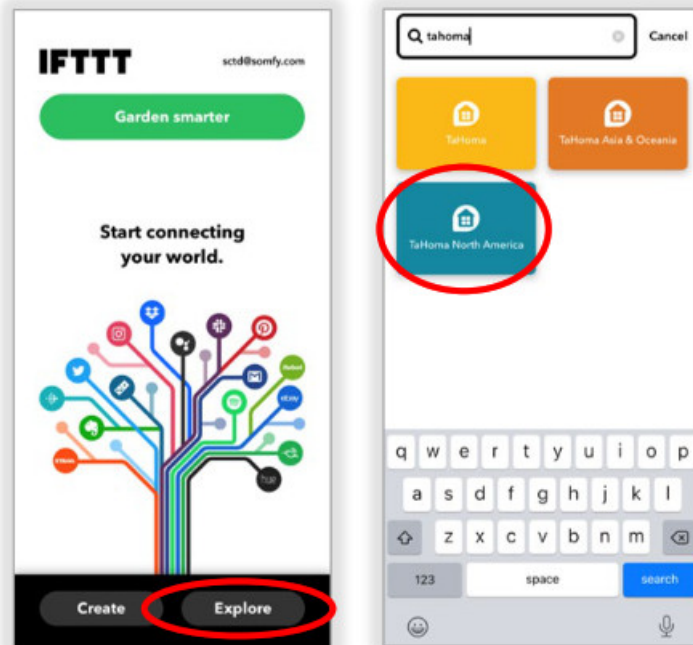
1. Download and install the IFTTT app from the Google Play Store or IOS App Store

2. Sign in on the IFTTT App using an email address and password
3. SELECT “Explore”
 - Choose “Create” to get started with custom Applets or choose “Explore” to connect and use any of the 12 premade Applets.

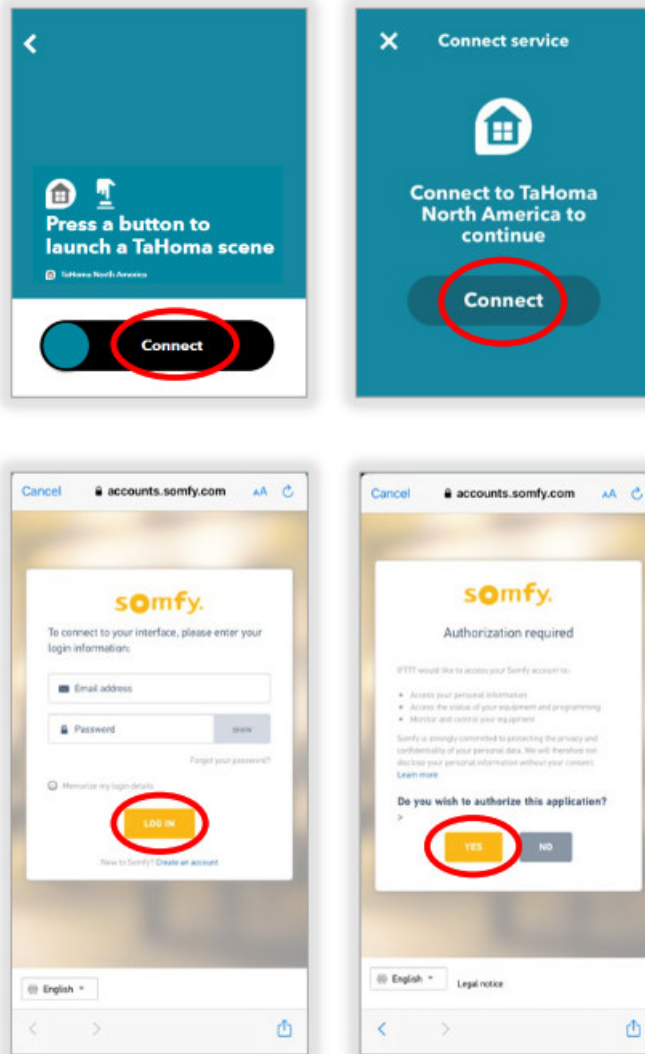
NOTE: Standard account allows 3 custom Applets. To create more than 3 Applets the IFTTT Pro Account is required. For

For more information visit: <https://ifttt.com/plans>

4. TYPE “Tahoma” into the Search bar, SELECT “TaHoma North America”



5. SELECT an available pre-made Applet from the list, SELECT “Connect” OR SELECT “Connect” on Tahoma North America to create an Applet



6. Enter TaHoma Login credentials previously used to Register during TaHoma Programming
7. SELECT “LOG IN”
8. SELECT “YES” to authorize IFTTT to access the Somfy account

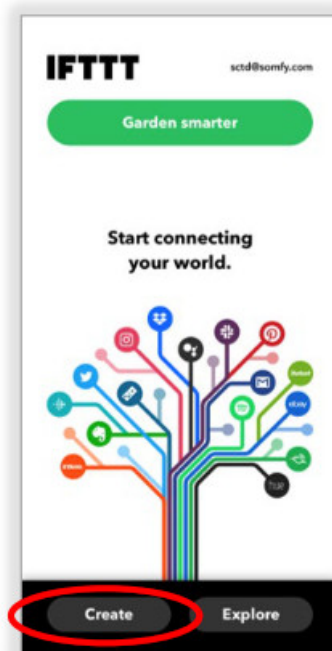
Accounts are now connected.

CREATE AN APPLETT

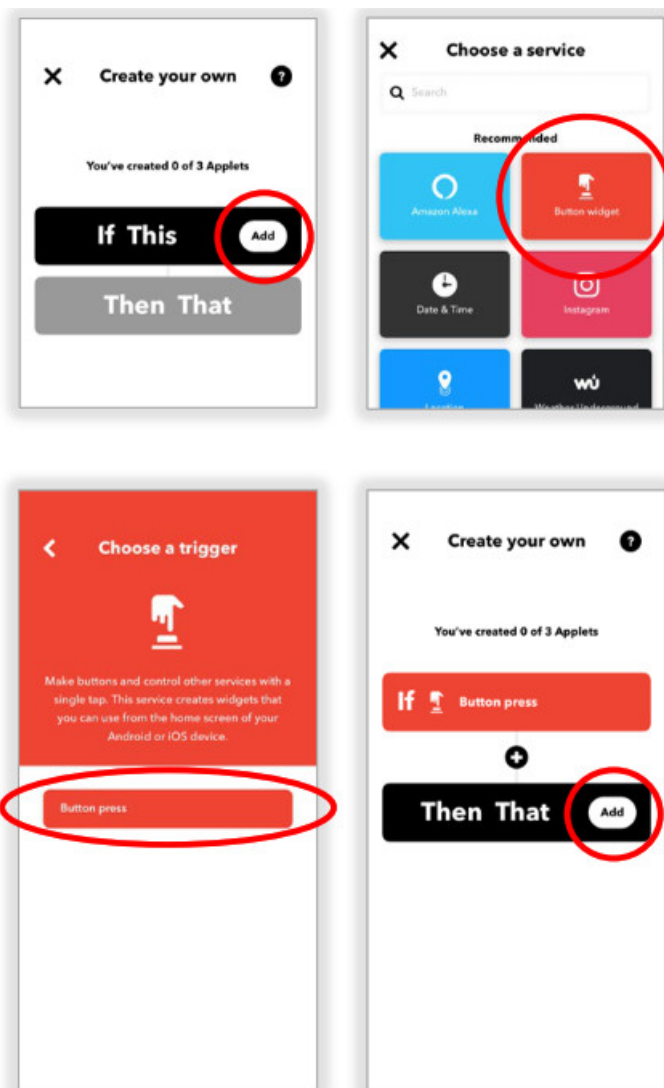
Create Applet button widgets to launch TaHoma Scenes

This process creates widgets used from the home screen of Android and IOS devices.

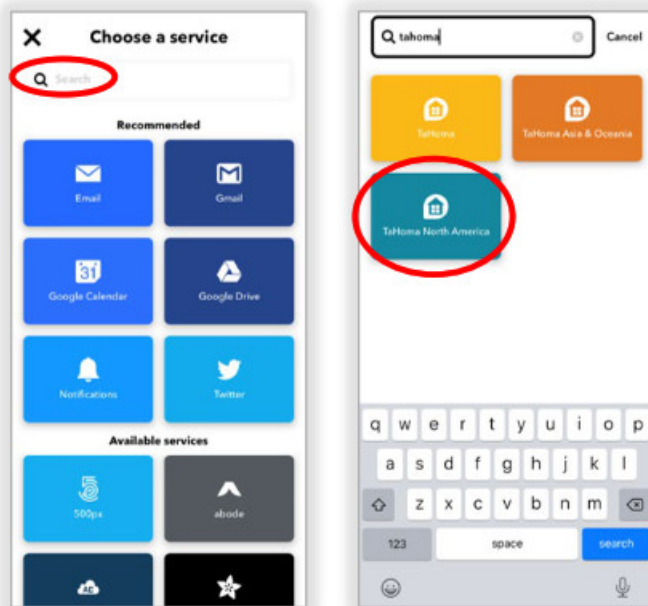
1. From IFTTT home page SELECT “Create”
 - Choose “Create” to get started with custom Applets, or choose “Explore” to connect and use any of the 12 premade Applets.
 - Standard account allows 3 custom Applets. To create more than 3 Applets the IFTTT Pro Account is required.
- For more information visit: <https://ifttt.com/plans>



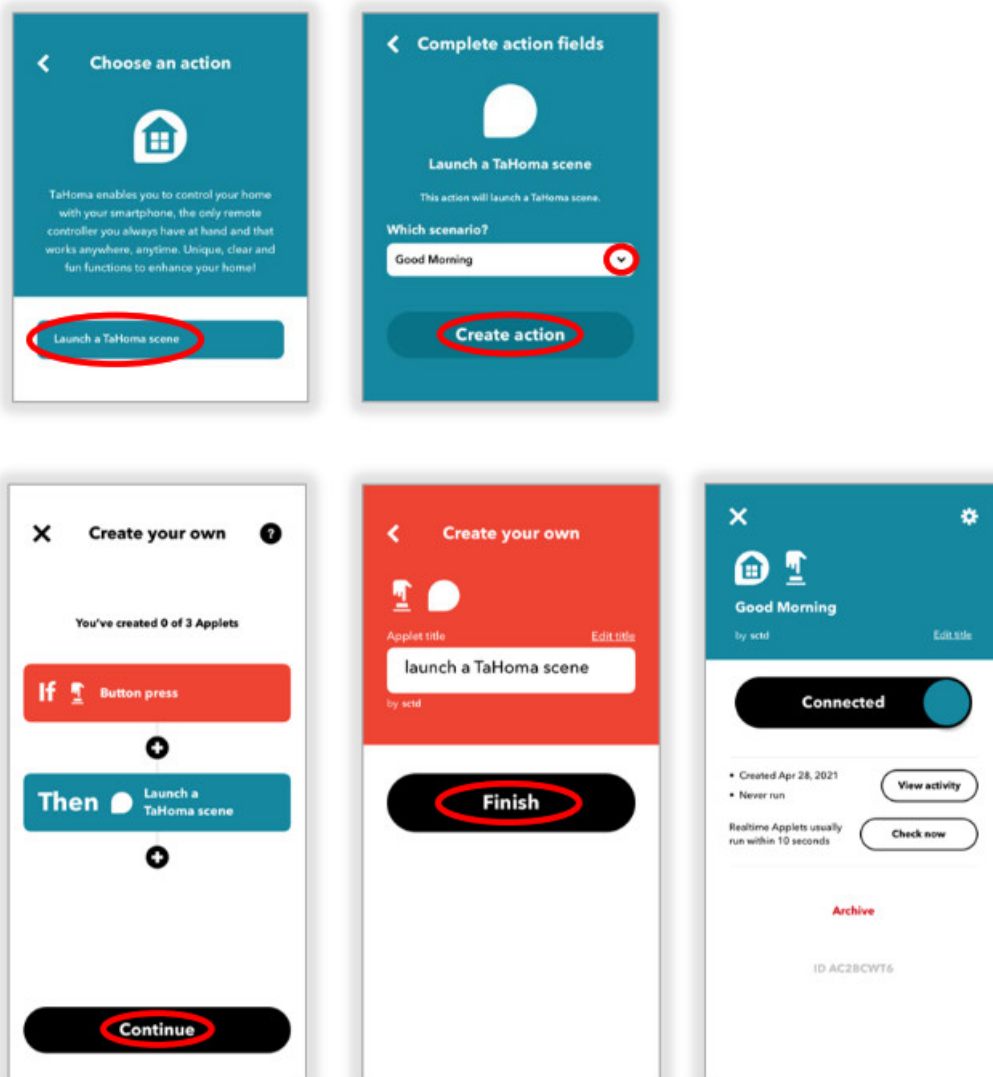
2. SELECT "Add" next to If This
3. SELECT "Button Widget"



4. SELECT "Button Press"
5. SELECT "Add" next to Then That
6. TYPE "TaHoma" into the Search bar, SELECT "TaHoma North America"



7. SELECT "Launch a TaHoma Scene"
8. SELECT "Create action"
9. SELECT "Continue"



10. Enter an Applet Title Example: "Good Morning"
11. SELECT "Finish"
12. SELECT "Continue" to complete the Applet

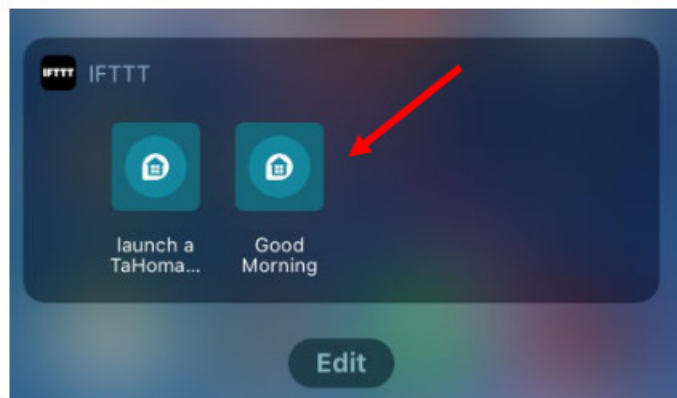
The Button widget Applet is now connected.

To add the new button widget to your Android or IOS home screen, follow the steps below:

IOS –

Widgets on IOS can be accessed in the “Today View.” The Button Widget can be long-pressed to trigger the IFTTT Applet (for 3D Touch-enabled devices).

1. Open “Today View” on the IOS device
2. Scroll down to the bottom and SELECT “Edit”
3. Scroll down to the bottom and SELECT “Customize”
4. Find IFTTT and SELECT the green add/plus symbol (+)
5. SELECT “Done”



ANDROID –

OPTION 1

1. Go to the widget applet details screen in the IFTTT App
2. SELECT “Add home screen widget” button to prompt instructions

Note: A button will be added to the home screen

OPTION 2

1. Go to the device home screen
2. Long-press any empty space on the home screen to prompt the widget menu to appear
3. On the widget menu, SELECT IFTTT
4. Long-press either “IFTTT Small” or “IFTTT Large” and drag it to any empty space on the home screen to add the widget

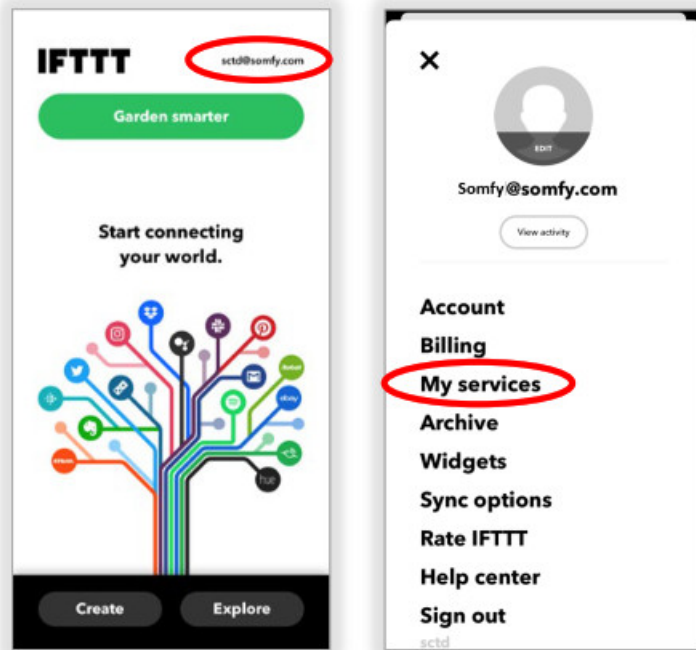
DISCONNECT IFTTT FROM TAHOMA

If Applets are no longer required to trigger any RTS shades by voice, follow the steps below:

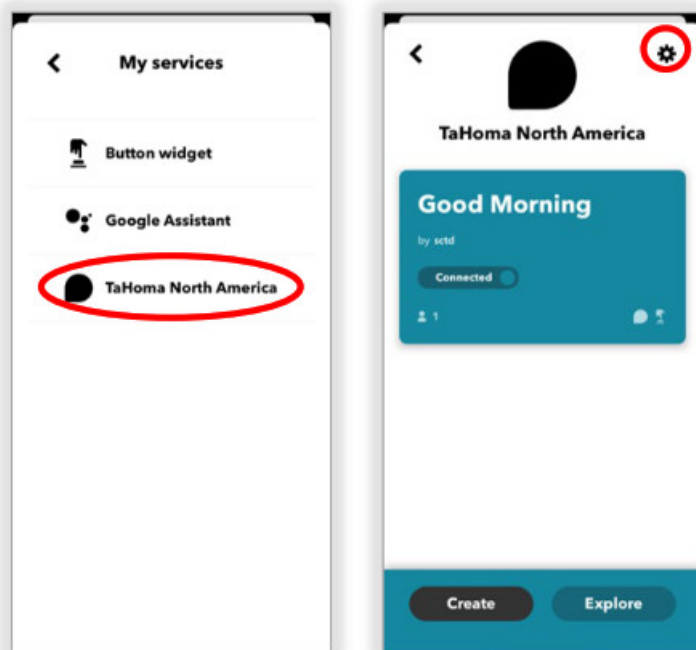
All premade and created Applets will no longer function after completing these steps.

If IFTTT Services are required again, please refer to the CONNECT IFTTT TO TAHOMA section of this Guide.

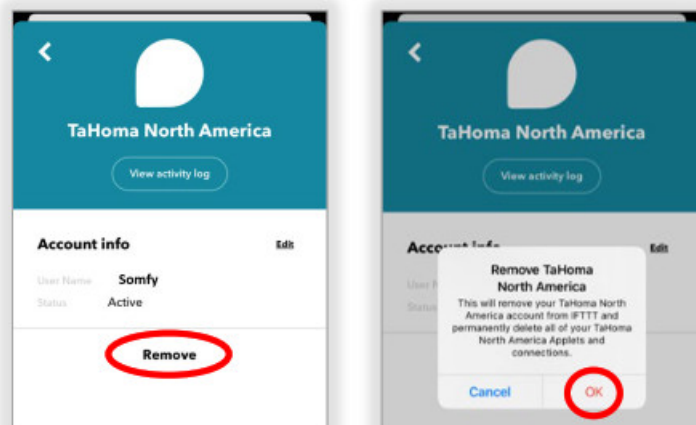
1. SELECT the email address from the top righthand corner
2. SELECT “My Services”



3. SELECT "TaHoma North America"
4. SELECT the gear icon from the top right-hand corner



5. SELECT "Remove"
6. SELECT "OK"



The TaHoma North America Applet is now disconnected.

ABOUT SOMFY

SOMFY® has been improving everyday life for more than 270 million people by designing and manufacturing intelligent motorization solutions for interior window coverings and exterior solar protection. Somfy innovates to automate and connect shades, blinds, draperies, awnings, rolling shutters, exterior screens & pergolas for commercial and residential buildings in 58 countries across the globe. With 170+ million motors produced over the last half-century, Somfy is committed to creating reliable and sustainable solutions that promote the best way of living and well-being for all.

FOR QUESTIONS OR ASSISTANCE PLEASE CONTACT TECHNICAL SUPPORT: (800) 22-SOMFY (76639)
technicalsupport_us@somfy.com

SOMFY SYSTEMS INC

SOMFY NORTH AMERICAN HEADQUARTERS

121 Herrod Blvd.
Dayton, NJ 08810
P: (609) 395-1300
F: (609) 395-1776

FLORIDA 1200 SW 35th Ave. Boynton Beach, FL 33426 F: (561) 995-7502	CALIFORNIA 15301 Barranca Parkway Irvine, CA 92618-2201 F: (949) 727-3775	SOMFY ULC SOMFY Canada Division 5178 Everest Drive Mississauga, Ontario L4W2R4 P: (905) 564-6446 F: (905) 238-1491
--	--	---




A BRAND OF SOMFY GROUP

www.somfypro.com

© Somfy Systems, Inc. 8/2021. All brands, products and trademarks are the property of their respective owners.

Documents / Resources

 The image shows the cover of a document titled "IFTTT INTEGRATION for TAHOMA® RTS". It features a white Somfy RTS motor unit and the Somfy logo at the bottom.	sOmfy IFTTT Tahoma RTS Zigbee Smartphonr and Tablet Interface [pdf] Installation Guide IFTTT, Tahoma RTS Zigbee Smartphonr and Tablet Interface
--	--

[Manuals+](#).