



## Somfy Control4 to Digital Motor Interface User Guide

[Home](#) » [somfy](#) » Somfy Control4 to Digital Motor Interface User Guide 

### Contents

- [1 Somfy Control4 to Digital Motor InterfaceOVERVIEW](#)
- [2 SYSTEM REQUIREMENTS](#)
- [3 INSTALLATION](#)
- [4 POWER](#)
- [5 SET UP](#)
- [6 APPENDIX](#)
- [7 FOR QUESTIONS OR ASSISTANCE PLEASE CONTACT TECHNICAL SUPPORT:](#)
- [8 Documents / Resources](#)
  - [8.1 References](#)
- [9 Related Posts](#)



### Somfy Control4 to Digital Motor Interface



### OVERVIEW

The Control4 to Digital Motor Interface (DMI) receives and sends bi-directional commands and feedback

connected between Somfy wired SDN RS485 motors and a Control4 Zigbee system as a wireless end node. It receives Control4 Zigbee transmissions and converts them to motor control commands for Somfy's line of line voltage (AC) and low voltage (DC) SDN RS485 motors.

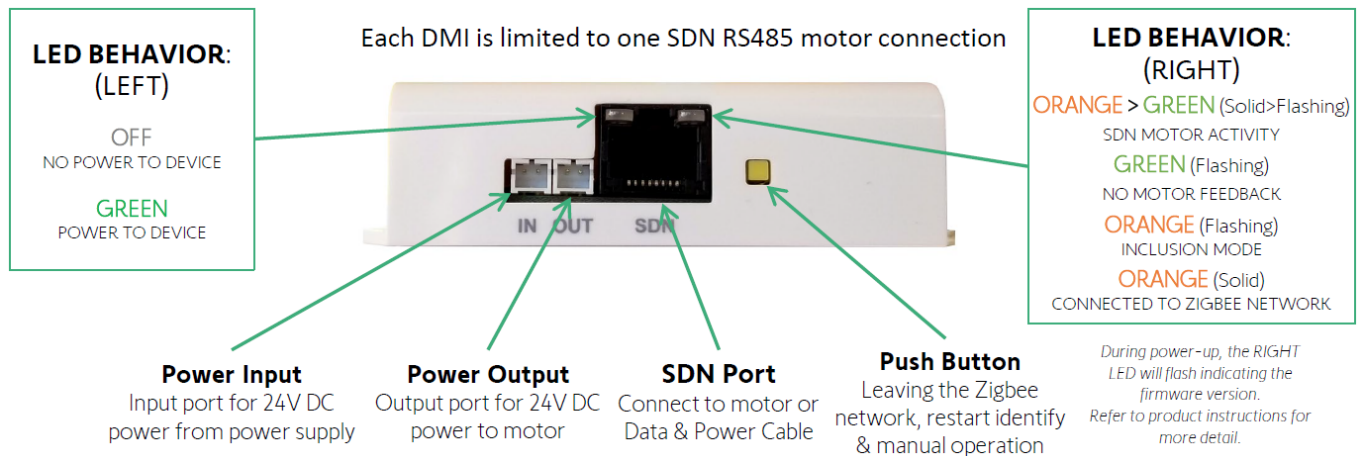
## SYSTEM REQUIREMENTS

SDN Motor limits must be set prior to install Digital Motor Interface

**NOTE:** Refer to the respective motor instructions on how to set the limits All connections must be properly made according to the wiring diagrams on the product instructions Fully commissioned Control4 system Control4 Composer Software OS 2.9.0 or higher Somfy Control4 to Digital Motor Interface driver



## CONNECTIONS & INDICATORS



## MOTOR ADAPTOR CABLE

### Control4 Digital Motor Interface Connection

Connect to SDN Port on the Digital Motor Interface

### Digital Motor Connection

Connect to SDN RS485 Digital Motor Cable(s)

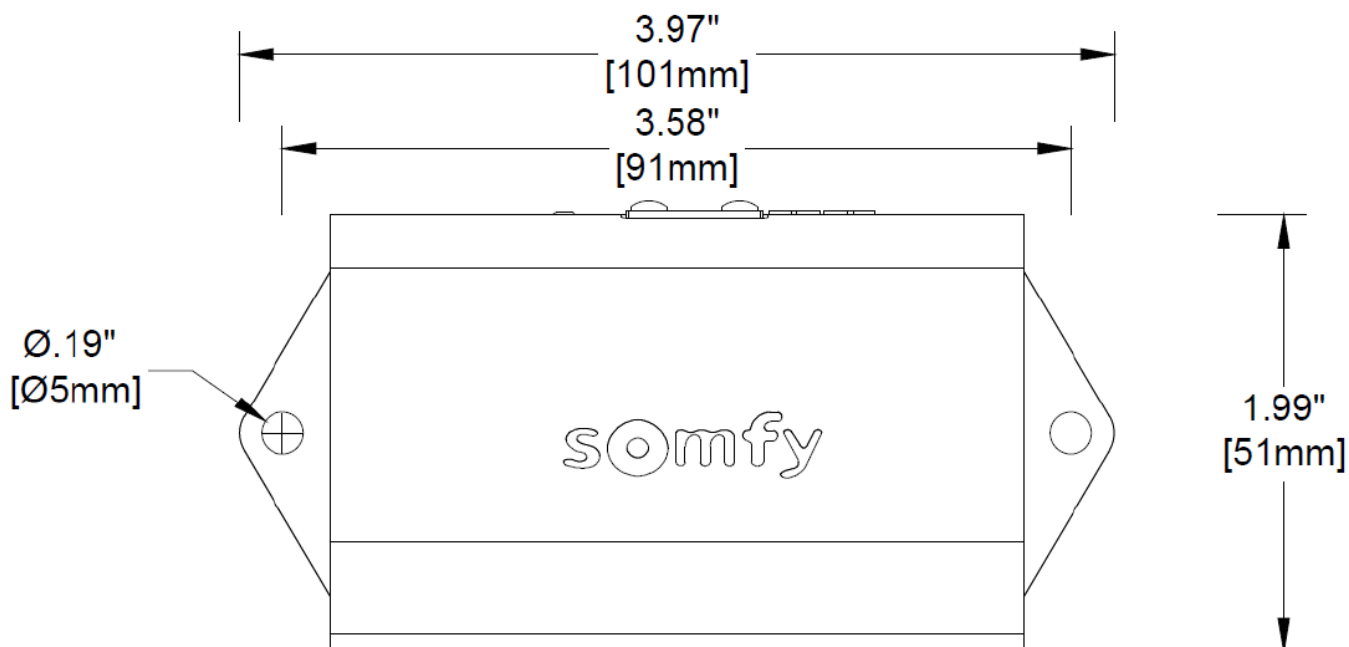
### Power Supply Connection

Connect to the power supply to provide power

When installing the Digital Motor Interface (DMI) with DC motors, the Data & Power Adaptor Cable (Ref # 9027112, sold separately) is required for proper installation. Using the DMI with AC SDN RS485 motors requires the Somfy Grey Motor Data Cables (sold separately).

## INSTALLATION

### MOUNTING








The Control4 to Digital Motor Interface utilizes mounting tabs with screw holes for installation.

## POWER

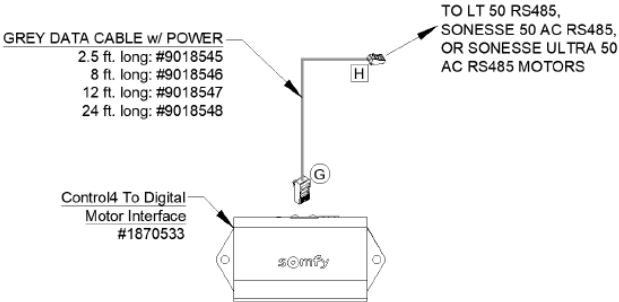
This device is powered by a line voltage AC SDN RS485 motor or a 24V DC power supply. There is a single RJ45 port on the DMI which provides the connection to the SDN motor or adaptor cable. The DMI is powered by a line voltage SDN RS485 motor using a Grey Motor Data Cable or low voltage power supplies including a plug-in transformer or power distribution enclosure kit.

| ELECTRICAL SPECIFICATION |   |
|--------------------------|---|
| Voltage Input            | Requires regulated 24V DC or AC SDN Motor power output  |
| Voltage Output           | Regulated 24V DC, passed through from the Input Voltage |
| Power Connectors         | 2 pin JST, 2 mm pitch (Same for input & output)         |
| Power Consumption        | 50mA @ 24V DC   |

| LINE VOLTAGE POWER SUPPLY OPTIONS   |  |  |   |
|---|--|--|---|
| AC RS485 TUBULAR MOTORS   | GLYDEA ULTRA WITH RS485 MODULE   |  |   |
| DMI is powered by the motor using Grey Motor Data Cable                           | DMI is powered by the low voltage power supply options below (Requires cable #9014794 for power input) |  |   |
| LOW VOLTAGE POWER SUPPLY OPTIONS  |  |  |   |
| TRANSFORMER OPTION  |  |  |   |
| 24V DC 1.67A Wall Mount Power Supply #1822209                                     |  |  |   |
|  |  |  |   |
| POWER DISTRIBUTION ENCLOSURE KITS   |  |  |   |
| Max. distance of 150ft. with 16 AWG wire  |  |  |   |
| 5 Motor #1870196  | 10 Motor #1870192  | 15 Motor #1870197  | 20 Motor #1870198   |
|  |                       |  |  |

**WIRING TO SYSTEM FOR OPERATION**

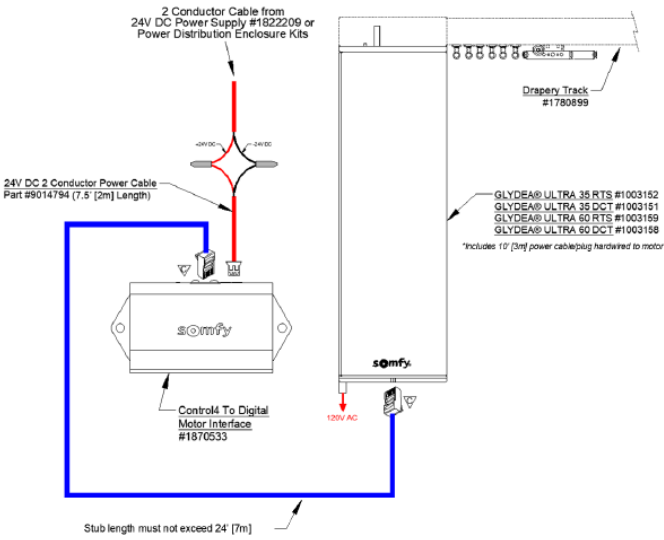
### WITH AC RS485 MOTOR



| Grey Data Cable With Power Pinout               |        |               |       |
|---|--------|---------------|-------|
| 4 Cond. 26AWG modular cable with RJ-45 and RJ-9 |        |               |       |
| Pin #   | Color  | Function      | Pin # |
| 1   | Yellow | SDN RS485 (+) | 1     |
| 2   | Green  | SDN RS485 (-) | 2     |
| 4   | Red    | Power Out     | 3     |
| 8   | Black  | Ground        | 4     |

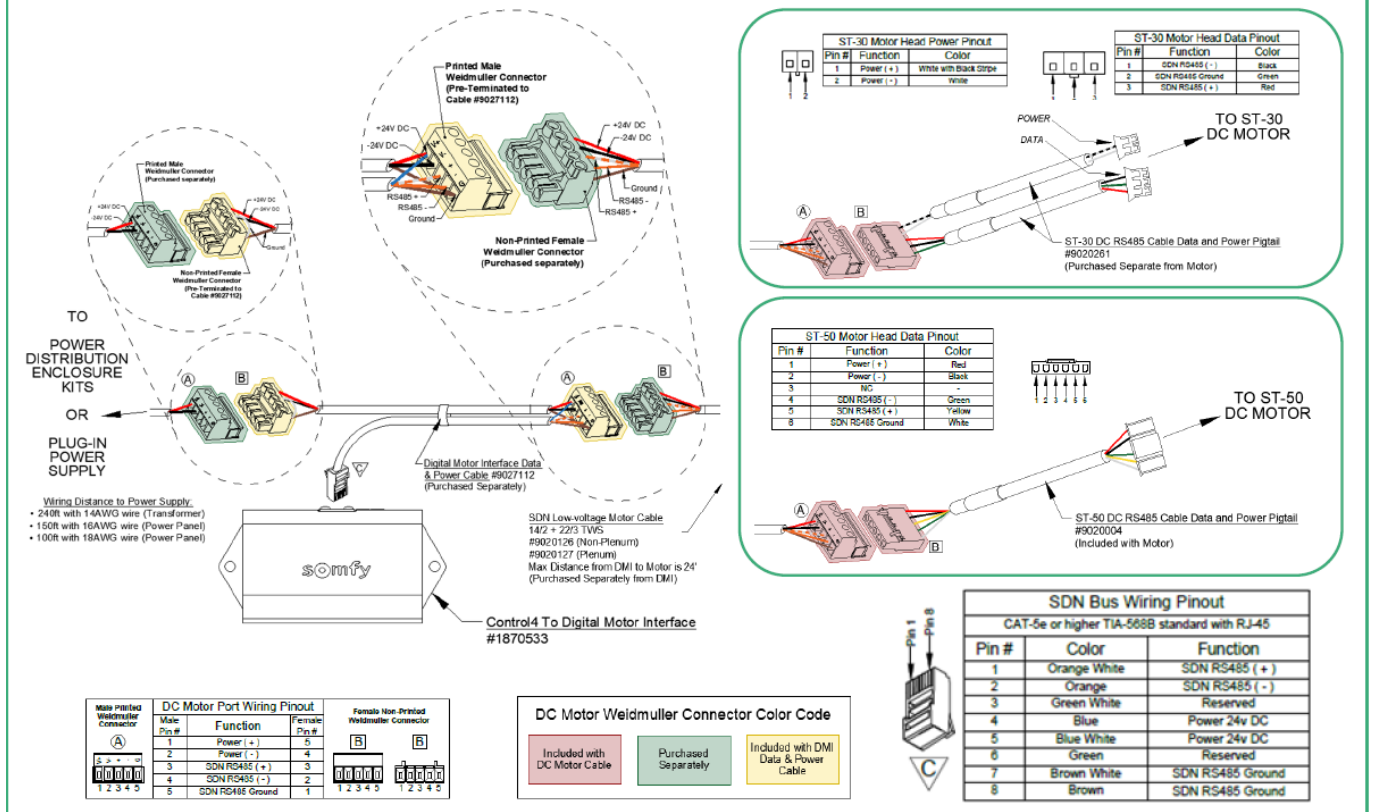
### WITH GLYDEA ULTRA MOTOR

NOTE: Irismo™ 35 (Mini DC) is not supported



Module required for Motors:  
**RS485 (2-WAY) MODULE FOR GLYDEA® ULTRA MOTORS**  
**#1870275**

## WITH DC RS485 MOTOR

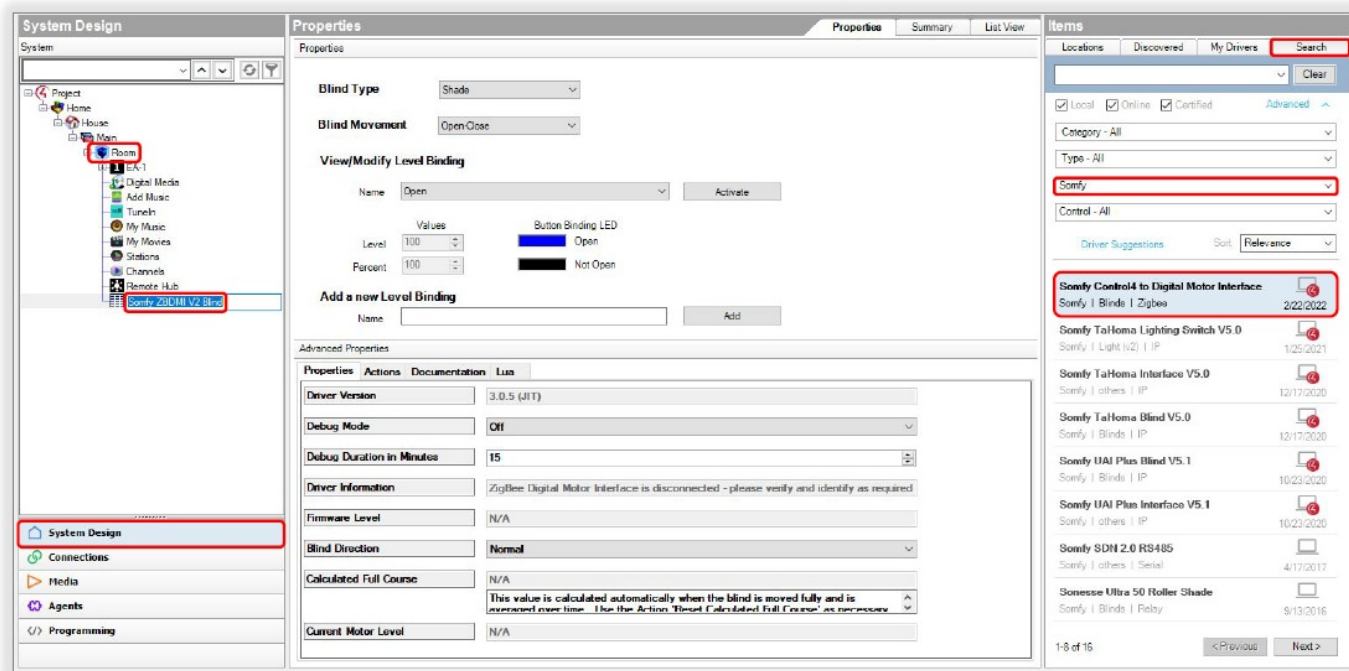


## SET UP

### ADD BLIND DEVICE TO PROJECT

Prior to Control4 programming, confirm that the DMI Push Button properly operates the individually connected SDN motor. Reference the Somfy Control4 to Digital Motor Interface driver details located in the device Documentation tab. A Somfy Control4 to Digital Motor Interface driver is required for each DMI installed.

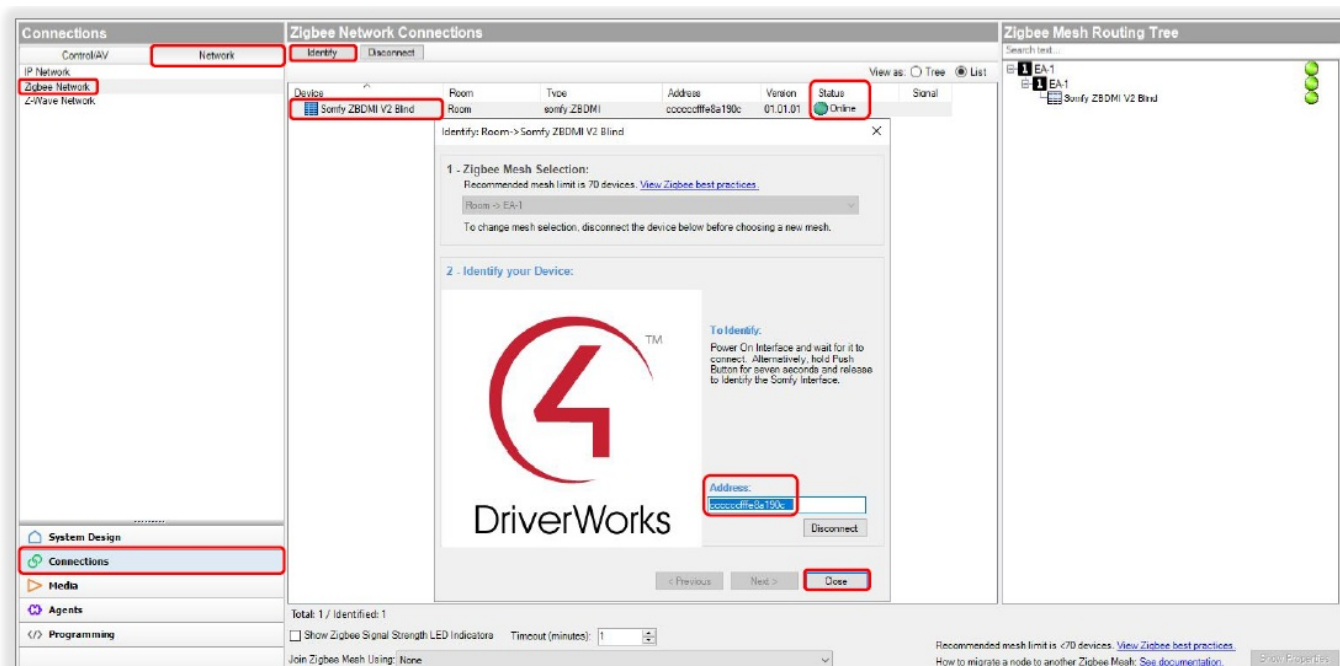
1. In the Composer System Design view Project tree, SELECT a Room in which a device is to be added
2. In the Items pane, SELECT the "Search" tab
3. In the Manufacturer dropdown list, SELECT "Somfy"
4. SELECT the "Somfy Control4 to Digital Motor Interface" certified driver
5. DOUBLE- or RIGHT-CLICK the driver to "Add to Project"
6. RENAME the device to the associated location or name of blind



## IDENTIFY DEVICE

Reference the Somfy Control4 to Digital Motor Interface driver details located in the device Documentation tab. A Somfy Control4 to Digital Motor Interface driver is required for each DMI installed.

1. The Control4 to DMI is automatically in Identify mode upon power-up. For systems with multiple units, it is recommended to power up and identify the units one at a time.
2. In the Composer, Connections view Network tab, SELECT “Zigbee Network”
3. In the Zigbee Network Connections Device list, SELECT the DMI to be identified
4. SELECT “Identify”
5. PRESS & HOLD the Push Button on the DMI for seven seconds
6. Once the Address field populates the node address, SELECT “Close”
7. CONFIRM the device Status displays “Online”



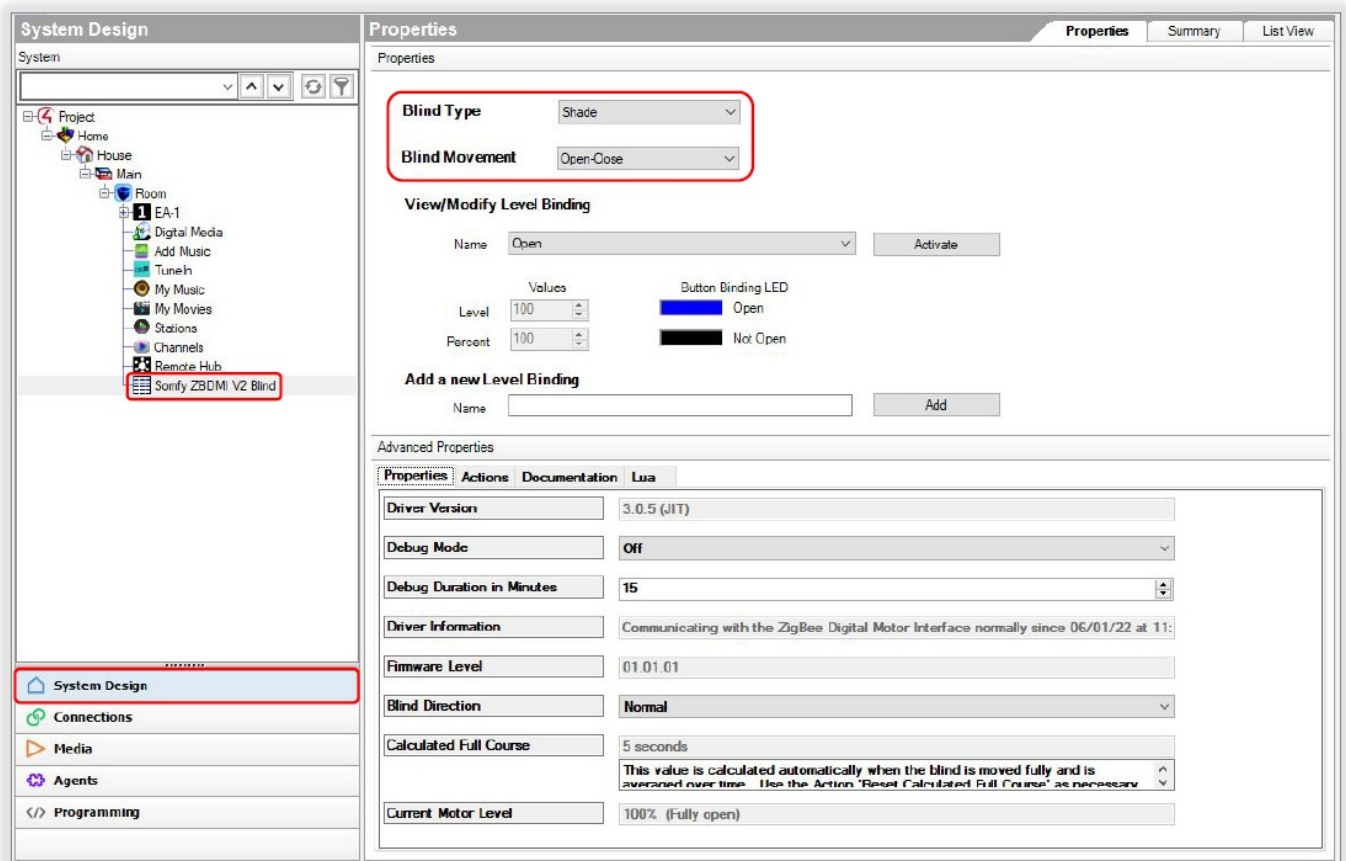


## SET BLIND DEVICE PROPERTIES

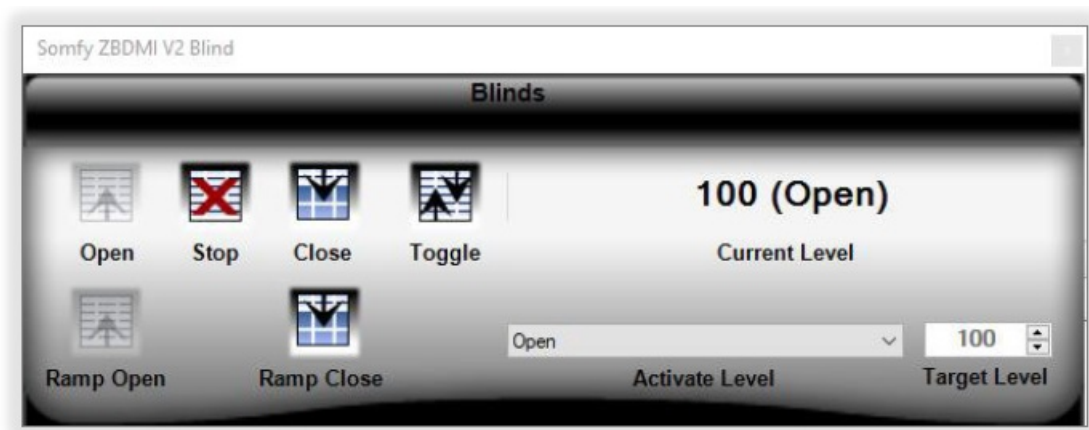
Reference the Somfy Control4 to Digital Motor Interface driver details located in the device Documentation tab.

1. In the Composer System Design view, Project tree, SELECT the DMI to be setup
2. In the Properties tab, SELECT the appropriate Blind Type for the product in the dropdown
3. SELECT the appropriate Blind Movement for the product in the dropdown

In the View/Modify Level Binding, set Control4 keypad button properties and connect the driver button links in Control & AV Connections. When complete, Refresh Navigators.



DOUBLE-CLICK the DMI to test each button operation



## APPENDIX

## [APPENDIXA] AVAILABLE COMMANDS & ACTIONS

| DIGITAL MOTOR INTERFACE COMMANDS |   |
|----------------------------------|---|
| Close                            | Moves blind to the fully closed position  |
| Open                             | Moves blind to the fully open position    |
| Stop                             | Stops blind when moving                   |
| Toggle                           | Sequence controls blind close-stop-open   |
| Target Level                     | Moves blind to a percent openness (0-100) |

**SOMFY** is the leading global manufacturer of strong, quiet motors with electronic and app controls for interior window coverings and exterior solar protections. Over 270 million users worldwide enjoy the more than 170 million motors produced by Somfy. During the past 50 years, Somfy engineers have designed products for both the commercial and residential markets to motorize window coverings such as interior shades, wood blinds, draperies, awnings, rolling shutters, exterior solar screens and projection screens. Somfy motorization systems are easily integrated with security, HVAC and lighting systems providing total home or building automation.

### FOR QUESTIONS OR ASSISTANCE PLEASE CONTACT TECHNICAL SUPPORT:

(800) 22-SOMFY (76639) [technicalsupport\\_us@somfy.com](mailto:technicalsupport_us@somfy.com)

#### SOMFY SYSTEMS INC

- SOMFY NORTH AMERICAN HEADQUARTERS
- 121 Herrod Blvd.
- Dayton, NJ 08810
- P: (609) 395-1300
- F: (609) 395-1776

#### FLORIDA

- 1200 SW 35th Ave.
- Boynton Beach, FL 33426
- F: (561) 995-7502

#### CALIFORNIA

- 15301 Barranca Parkway
- Irvine, CA 92618-2201
- F: (949) 727-3775
- SOMFY ULC


#### SOMFY Canada Division

- 6411 Edwards Blvd



- Mississauga, ON L5T 2P7
- P: (905) 564-6446
- F: (905) 238-1491
- [www.somfypro.com](http://www.somfypro.com)

## Documents / Resources

|   |  |
|---|--|
|  | <p><a href="#">Somfy Control4 to Digital Motor Interface</a> [pdf] User Guide<br/>Digital Motor Interface, Control4, Digital, Motor, Interface</p> |
|---|--|

## References

-  [Home page - us](#)

Manuals+.