



SOMASON AC114 Remote Controller Instruction Manual

[Home](#) » [SOMASON](#) » SOMASON AC114 Remote Controller Instruction Manual 

SOMASON AC114 Remote Controller Instruction Manual



Contents

1 Product Overview

2 Select the Channel for Programming (for Multi-Shade remotes)

3 Set Upper/Lower position for the shade

4 Delete ALL memory (including the remote and limits – resets the motor to factory settings)

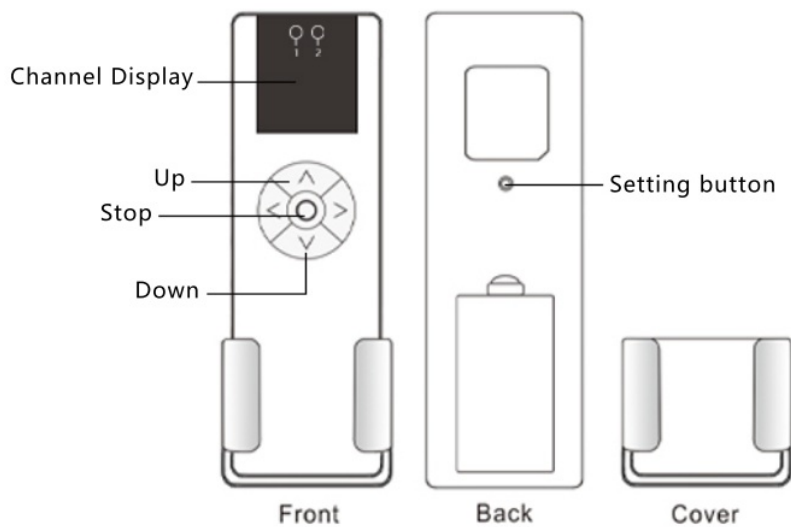
5 Add a new Controller to a Shade Multiple controllers can be linked to one shade

6 Documents / Resources

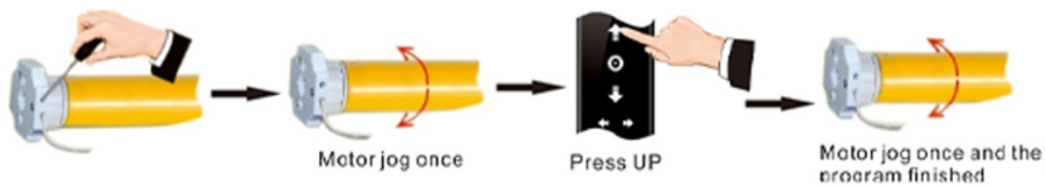
6.1 References

7 Related Posts

Product Overview



Select the Channel for Programming (for Multi-Shade remotes)



1. Press “CHANNEL +” or “CHANNEL” to select desired channel, it’s a single channel, not ALL(ALL=all lights on).
2. With a paper clip or small screwdriver, Press and Hold Setting Button. Shade motor rotates briefly up and down(jogs).
3. Press the UP button on the Remote once. The shade rotates briefly up and Down(jogs) the pairing is finished

Set Upper/Lower position for the shade

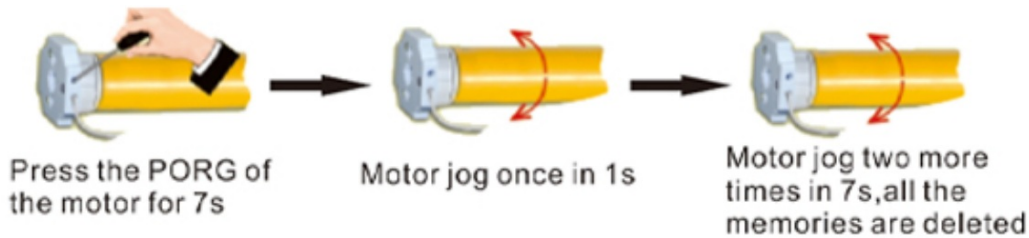


1. PRESS/HOLD the inset button on the BACK of the control. The shade rotates briefly up and down(jogs) to

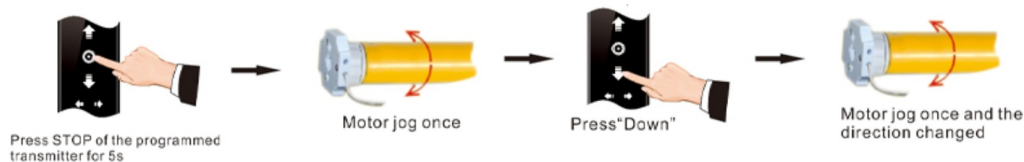
enter limit setting.

2. Press the UP or DOWN Buttons to adjust your desired up or down position.
3. Press Setting button to save the limit button. The shade rotates briefly up and down(jogs) the limit position is done

Delete ALL memory (including the remote and limits – resets the motor to factory settings)



1. PRESS the PROG BUTTON on the motor for 7s. Motor jogs once in 1s, motor jogs twice later, now all the limits have been delete.
2. Change the Direction



Add a new Controller to a Shade Multiple controllers can be linked to one shade



1. Press STOP button of paired remote A. Motor jog once.
2. Press Up button of the new remote. Motor jogs again, the new remote has been paired with shades.

Documents / Resources

	SOMASON AC114 Remote Controller [pdf] Instruction Manual AC114, AC114 Remote Controller, Remote Controller, Controller
--	---

References

- [User Manual](#)

[Manuals+](#), [Privacy Policy](#)