



Solwise TAT140 Asset Tracker For Worldwide Coverage User Guide

[Home](#) » [Solwise](#) » Solwise TAT140 Asset Tracker For Worldwide Coverage User Guide 



Teltonika TAT140 – easy set-up guide

Contents

- 1 TAT140 Asset Tracker For Worldwide Coverage
- 2 Setting up the TAT140
- 3 Insert the SIM card
- 4 Attach to your PC
- 5 Install USB Drivers
- 6 Update the Firmware
- 7 My suggestion for tracking software
- 8 Setting up the tracker configuration
- 9 Documents / Resources
- 9.1 References

TAT140 Asset Tracker For Worldwide Coverage

Whilst I have worked for Solwise for over 20 years I have always been more sales and marketing than setting up routers etc. With my skillset in mind I felt that when we thought to supply Teltonika Trackers to motorhome, caravan, campervan type owners I should set it up myself to prove how it works and that really any one can do it. I would caveat that with, there are many very techie types with similar vehicles to mine that would be able to set it up without issue, but when setting this unit up I still found it was a bit fiddly, hence this guide.

There was a bit of trial and error initially so I have put together this guide so you should not make the mistakes I did. I hope it is straightforward enough, if not feel free to get in touch louise@solwise.co.uk / 01482 672872

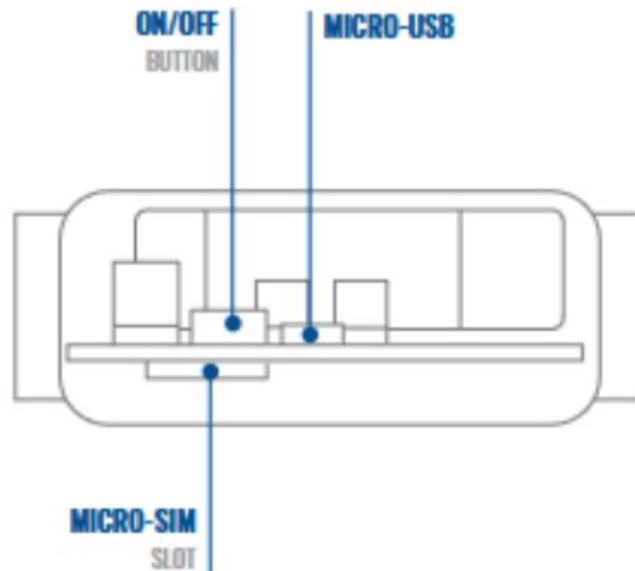
When you get your TAT140 it comes just the unit in the box. No cables. No SIM. You will need to get yourself a data SIM and you will need a Micro USB cable to set it up. Please note, you will require a data USB cable rather than just a standard charging cable, my first mistake you should learn from! I bought a fancy one that coiled up from Amazon and it was £5.50.

Setting up the TAT140

You will need to download the configuration tool and firmware from Teltonika and you will need to install USB Drivers. Below I will go through where to download these from and how to update where necessary.

Insert the SIM card

Firstly, insert your SIM card and switch the unit on. A LED should start blinking.



Attach to your PC

Next plug the USB cable into the TAT140 and attach to your PC. You will need to install the USB drivers.

Install USB Drivers

1. Please download COM port drivers from [here](#)
2. Extract and run TeltonikaCOMDriver.exe.
3. Click Next in driver installation window.
4. In the following window click Install button.
5. Setup will continue installing the driver and eventually the confirmation window will appear. Click Finish to complete the setup.

Download Configurator and Firmware

You will then need to download the configurator and the latest firmware: https://wiki.teltonika-gps.com/view/TAT140_Firmware_and_configurator

You can download both in the same file on the firmware page to save you a bit of time.

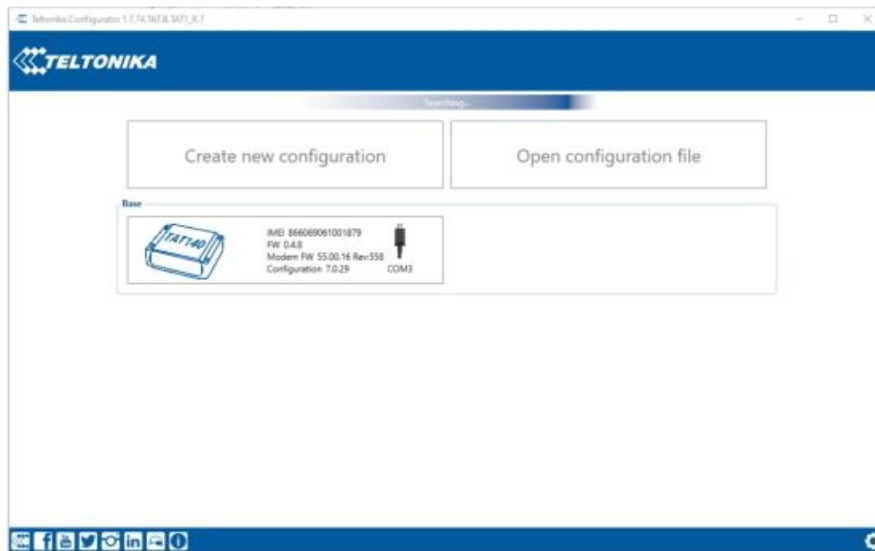
https://wiki.teltonika-gps.com/view/TAT140_Stable_firmware

https://wiki.teltonika-gps.com/view/Teltonika_Configurator_versions#For_TAT1YX_series

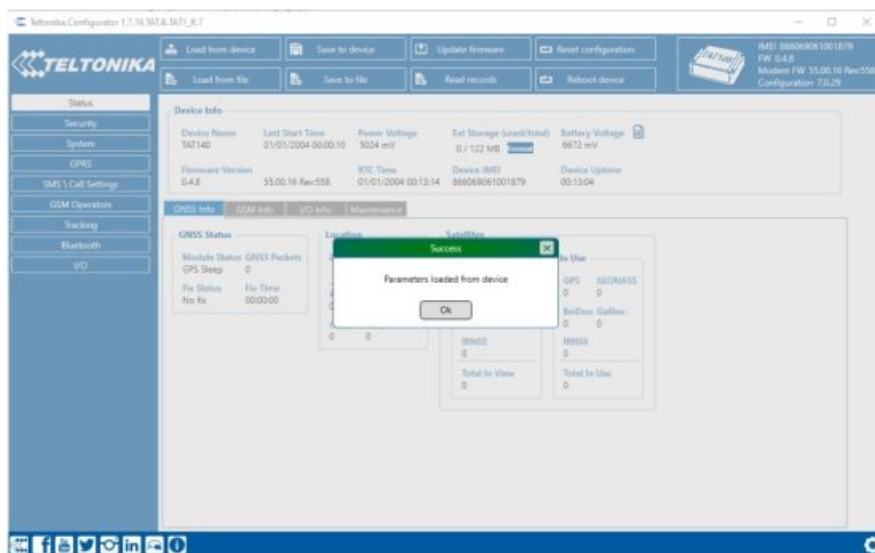
Download the zip file and extract it. Once that is extracted you double click on the

Teltonika.Configurator_TAT_1.7.74_B.TAT1_R.7.exe file and 'Run'

Once you run the .exe file it will show your TAT140 on the screen, as below, click on the picture of the TAT140:



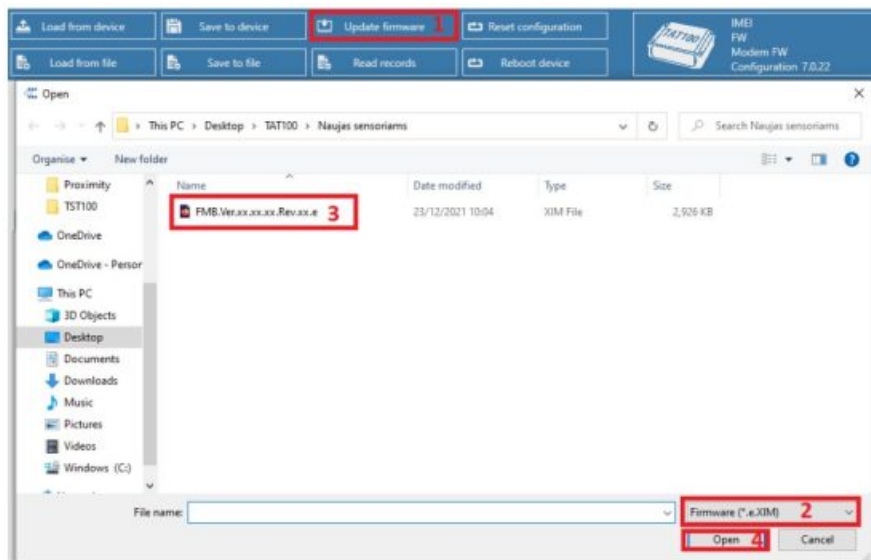
Click on ok – as seen below



Update the Firmware

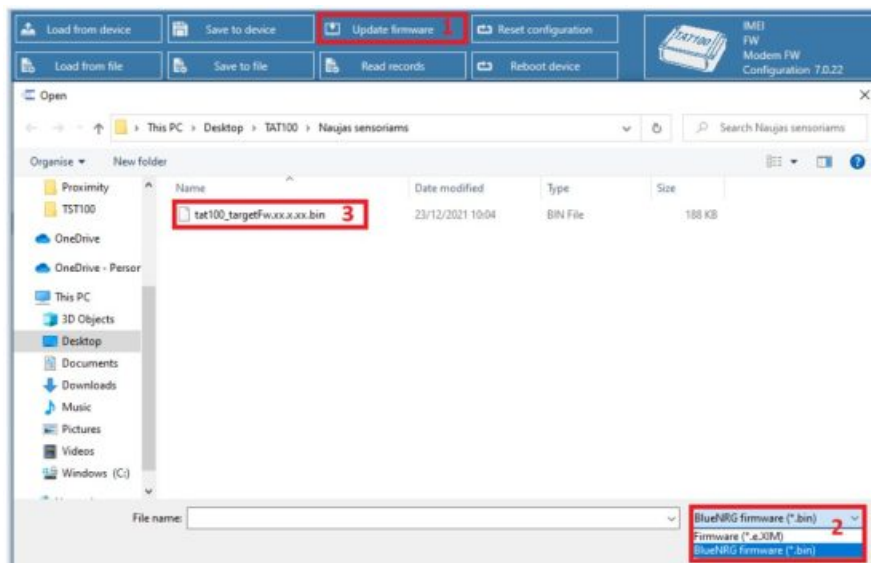
Before configuring the tracker I would suggest you update the firmware, there are two files. At the top of the screen there is a button 'Update firmware' – see screenshot below and follow in number order.

1. Select Update firmware
2. Select to flash Firmware(*.e.XIM) file
3. Click on file
4. And select Open. Wait until the device uploads the firmware.



When successfully uploaded:

1. Select Update firmware again
2. Select to flash BlueNRG firmware(*.bin)
3. Click on file
4. And select Open.

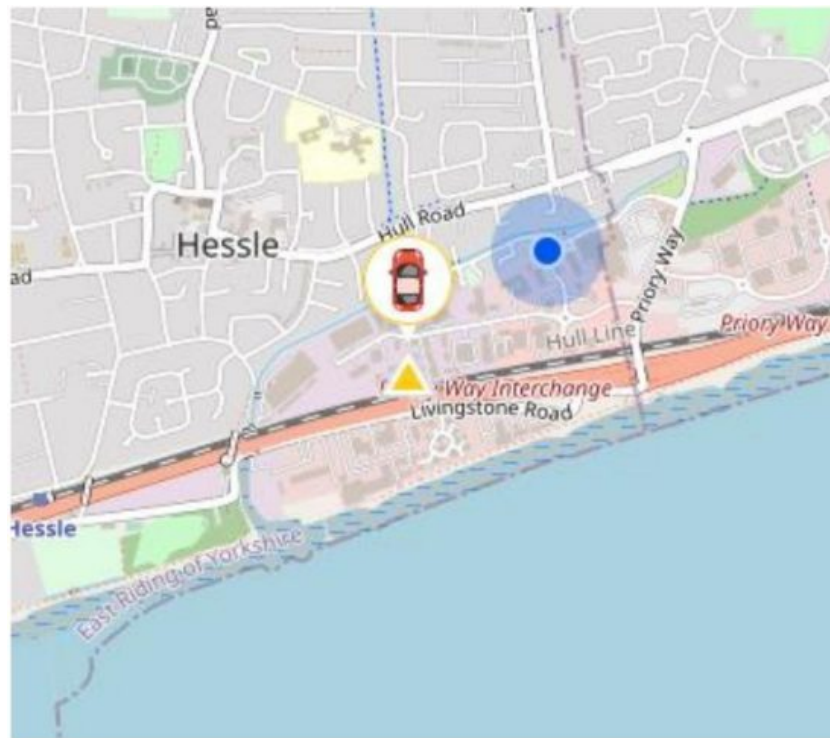


Now you can start to configure your tracker to your requirements. The tracker device will have default factory settings set on it initially. You will also need to choose a tracking software to view where your tracker is. I chose Ruhavik from GPS Trace as it can be used on the PC and there is an app for your phone.

My suggestion for tracking software

<https://gps-trace.com/en/ruhavik>

They have a free option and a number of paid for subscription options. I opted for the \$0.99 per month service. I found it easy to set up an account with them. You can use this service with many different trackers. I did a fair bit of research into which service to use and I liked the simplicity of this app, you can set geofences which notify you when the campervan goes outside of it. To manage your expectations, it does not work like 'Find my friend' on your phone, you don't track the unit as it drives around. This system will tell you where your van was last located. See the map below, this is my campervan outside the Solwise office.



To set up your tracker via the Teltonika Configuration tool you will need server settings from your chosen software supplier and the APN details of your SIM card.

Most common APN settings are:

EE: everywhere

Orange: orangeinternet

T-Mobile: general.t-mobile.uk

O2: mobile.o2.co.uk or idata.o2.co.uk

Vodafone: internet or pp.vodafone.co.uk

Three: 3internet or three.co.uk

Tesco Mobile: prepay.tesco-mobile.com

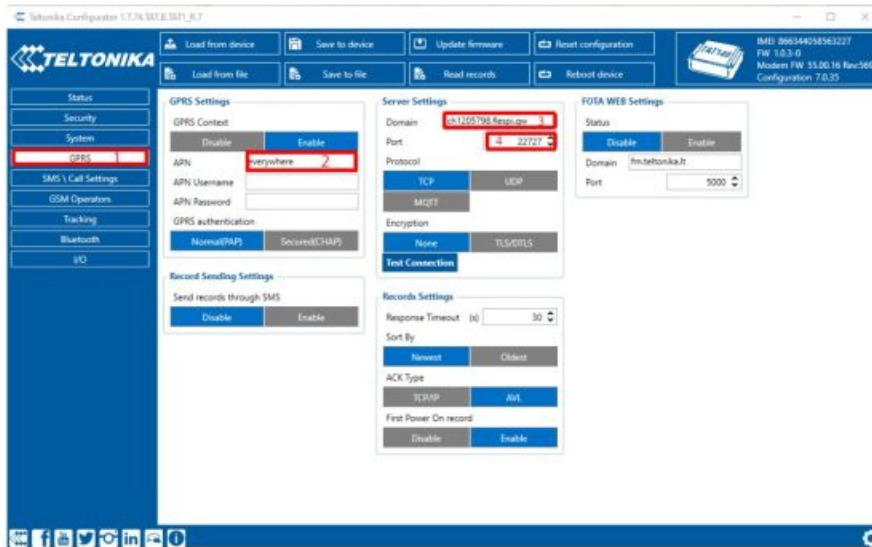
giffgaff: giffgaff.com

Virgin Mobile: goto.virginmobile.uk

BT Mobile: btmobile2.bt.com

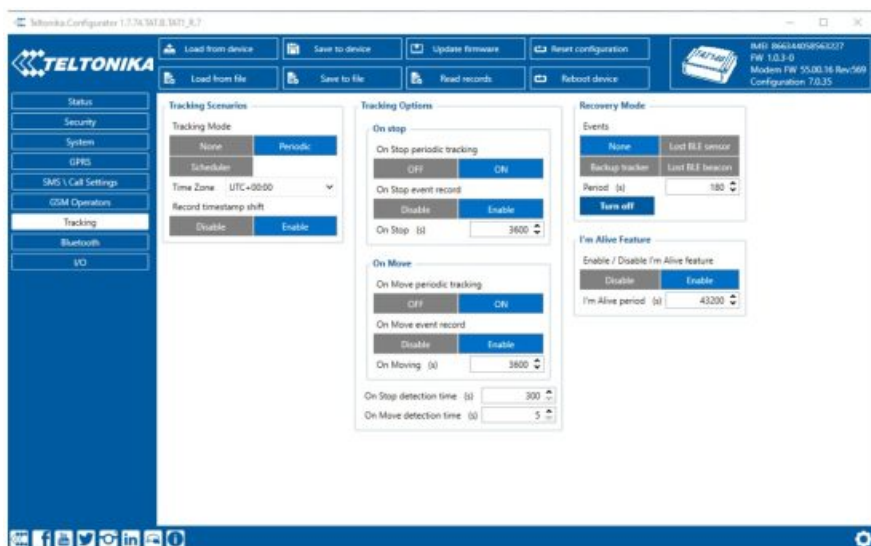
Setting up the tracker configuration

1. Head to the GPRS section of the configurator (see image below)
2. I'm using an EE SIM card and the APN for EE is everywhere, you will need to check the APN settings for your provider (see above).
3. Next you need to include the server settings of the software provider, those shown in the image are the settings for the Ruhavik system, you will need the domain address or IP and the port number.
4. Once all details entered click 'Save to device' button at the top.



The standard tracking settings on the TAT140 are set to 28800 seconds, I changed this for my testing purposes to 3600 seconds. You can set it to whatever you like but bear in mind if you set this for a lower amount it will continue to report back to you and use the battery up quicker. You can schedule the tracking too; my advice would be set to 'Periodic' rather than to set a schedule if you are using the tracker just as a way to ensure you know where the campervan last was for theft purposes.

These changes are done in the 'Tracking' menu option, see below.



There is lots more information on the finer details in the Teltonika Quick Start Guide and Teltonika User Manual. This guide is just a quick guide for simple use of the tracker.

<https://solwise.co.uk/downloads/files/QM-TAT140.pdf>

https://wiki.teltonika-gps.com/view/TAT140_Manual

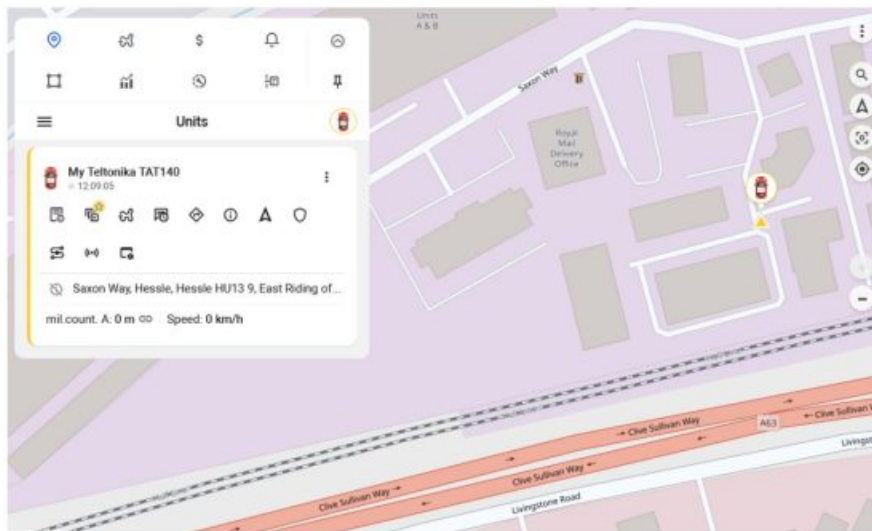
Once you have configured the tracker settings in the configurator tool you will need to add it to your chosen tracking software. As mentioned previously I have used the Ruhavik system which can be used on the computer and in a phone app. It is a great app for real-time tracking of your vehicle.

<https://gps-trace.com/en/ruhavik>

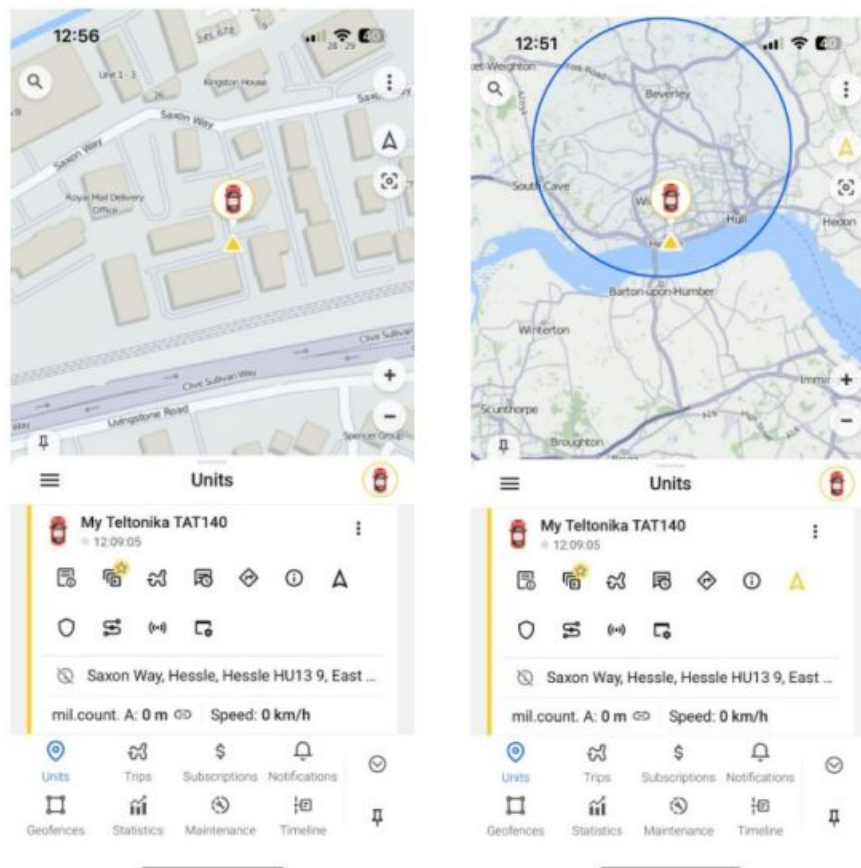
Tips for using the Ruhavik tracking app

First of all, I created an account with Ruhavik. Straight forward enough. Then I downloaded the app to my phone. They have a free option and paid for subscriptions. The free option will likely be ok for what most people will want but if you want more options then you have to pay for them. The free option has simple notifications and allows one geofenced area. A geofence is the area you set where you get a notification if your van leaves the area. Essentially the free option and the \$0.99 option show you where your van was at the last check-in. For most this will be enough. Below is the image of my van at the Solwise office viewed on my pc. It gives me a map location

and a partial address. Likely enough to let the police know where to find a stolen vehicle. For me, this is a peace of mind purchase.

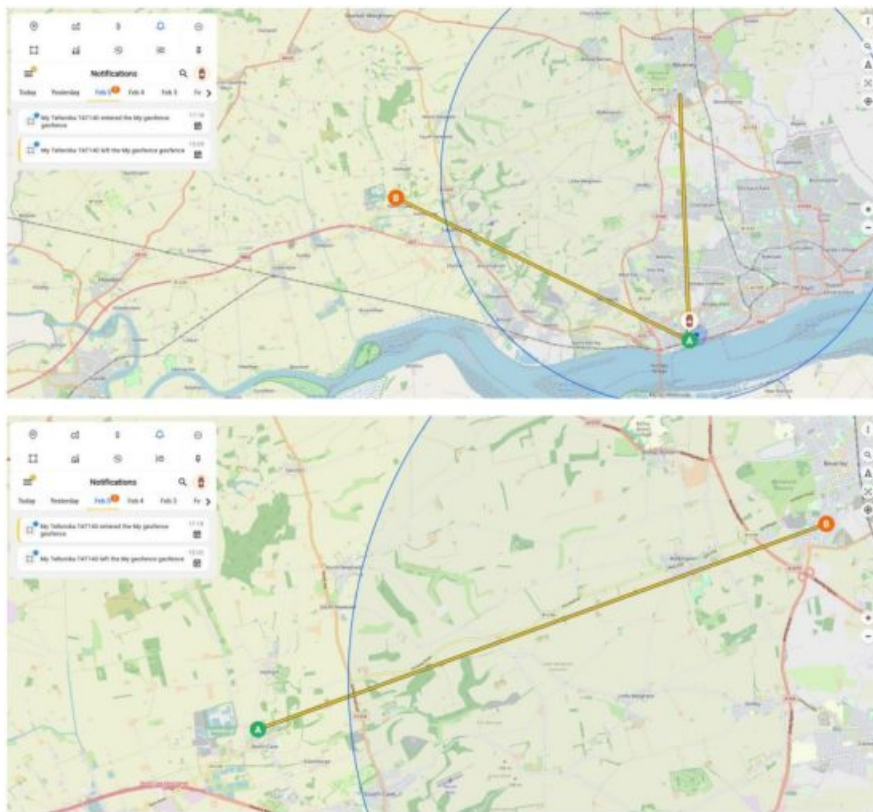


Below is the view from the app on my phone.



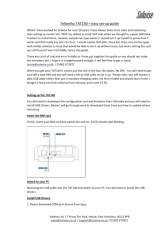
Essentially it is a very simple software application showing very simply where your van is! There are many tracker software options available online which you can use the Teltonika trackers with but if you want simplicity, this is the one I would recommend. We are in no way affiliated with GPS Trace or Ruhavik.

Below shows the map when the van left the Geofence in a different direction and then when it reentered a couple of hours later. I was really impressed with the phone app, it was almost pin-point correct with the address I visited. These maps are obviously scrolled out so you can't see the addresses, but when you do scroll in, it is spot-on.








Solwise Ltd. 17 Priory Tec Park, Hessle,
East Yorkshire, HU12 9PB
sales@solwise.co.uk
support@solwise.co.uk
01482 672872

Documents / Resources

	<p>Solwise TAT140 Asset Tracker For Worldwide Coverage [pdf] User Guide TAT140 Asset Tracker For Worldwide Coverage, TAT140, Asset Tracker For Worldwide Coverage, Tracker For Worldwide Coverage, Worldwide Coverage</p>
---	---

References

-  [giffgaff](#)
-  [Ruhavik - best app for real-time tracking your vehicle | GPS-Trace](#)
-  [TAT140 Firmware and configurator - Teltonika Telematics Wiki](#)
-  [TAT140 Manual - Teltonika Telematics Wiki](#)
-  [TAT140 Stable firmware - Teltonika Telematics Wiki](#)
- [User Manual](#)

Manuals+ Privacy Policy

This website is an independent publication and is neither affiliated with nor endorsed by any of the trademark owners. The "Bluetooth®" word mark and logos are registered trademarks owned by Bluetooth SIG, Inc. The "Wi-Fi®" word mark and logos are registered trademarks owned by the Wi-Fi Alliance. Any use of these marks on this website does not imply any affiliation with or endorsement.