



# SOLUM CS06FHB01 SmartTag Plus Bluetooth Tracker User Guide

[Home](#) » [SOLUM](#) » SOLUM CS06FHB01 SmartTag Plus Bluetooth Tracker User Guide

## Contents [ [hide](#) ]

- [1 SOLUM CS06FHB01 SmartTag Plus Bluetooth Tracker](#)
- [2 Bluetooth](#)
- [3 FCC Information to User](#)
- [4 Documents / Resources](#)
  - [4.1 References](#)
- [5 Related Posts](#)

# SOLUM

**SOLUM CS06FHB01 SmartTag Plus Bluetooth Tracker**



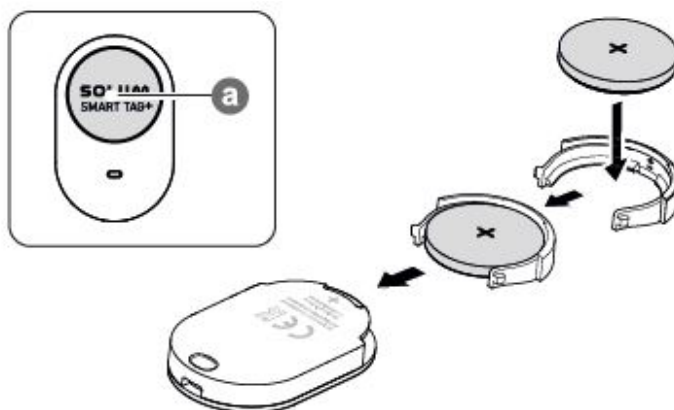
## Bluetooth

Bluetooth® is a registered trademark of Bluetooth SIG, Inc. worldwide. Other marks are the property of their respective owners.

- Be sure to visit [www.mysolum.com](http://www.mysolum.com) to view the device information, full user manual, and the detailed usage precautions before using the product.
- Your consumer rights are governed by the law of the country in which you purchased the product. Please contact your service provider for more information.

To connect a SmartTag to a mobile device, press the button ( ) to activate the SmartTag and follow the on-screen instructions to complete the connection. If the pop-up window does not appear, use a mobile device to scan the QR code on the box.

- Do not use your SmartTag in a hot environment of near
- Do not swallow or disassemble any battery, chemical burn hazard.
- If the battery from your SmartTag is swallowed it can cause severe internal burns in just 2 hours and can lead to death.
- Keep batteries away from infants and children. If the battery compartment does not close securely, stop using the product and keep it away from infants and children. If you think the batteries might have been swallowed or inserted inside any part of the body, seek immediate medical attention.
- Risk of or explosion if the battery is replaced by an incorrect type.



### FCC Part 15.19

This device complies with part 15 of the FCC Rules. Operation is subject to the following two conditions: (1) This device may not cause harmful interference, and (2) this device must accept any interference received, including interference that may cause undesired operation.

### FCC Part 15.21

Any changes or (including the antennas) to this device that are not expressly approved by the manufacturer may void the user's authority to operate the equipment.

### CALIFORNIA USA ONLY

This Perchlorate warning applies only to primary CR(Manganese Dioxide) Lithium coin cells in the product sold or distributed ONLY in California USA. "Perchlorate Material-special handling may apply, see [www.dtsc.ca.gov/hazardouswaste/perchlorate](http://www.dtsc.ca.gov/hazardouswaste/perchlorate)." R Park, New Jersey, 07660

### FCC Information to User

This equipment has been tested and found to comply with the limits for a Class B digital device, pursuant to Part 15 of the FCC Rules. These limits are designed to provide reasonable protection against harmful interference in a residential installation. This equipment generates, uses and can radiate radio frequency energy and, if not installed and used in accordance with the instructions, may cause harmful interference to radio communications. However, there is no guarantee that interference will not occur in a particular installation. If this equipment does cause harmful interference to radio or television reception, which can be determined by turning the equipment off and on, the user is encouraged to try to correct the interference by one of the following measures:

- Reorient or relocate the receiving antenna.
- Increase the separation between the equipment and receiver.
- Connect the equipment into an outlet on a circuit different from that to which the receiver is connected.
- Consult the dealer or an experienced radio/TV technician for help.

### Caution

THE GRANTEE IS NOT RESPONSIBLE FOR ANY CHANGES OR MODIFICATIONS NOT EXPRESSLY APPROVED BY THE PARTY RESPONSIBLE FOR COMPLIANCE. SUCH MODIFICATIONS COULD VOID THE USER'S AUTHORITY TO OPERATE THE EQUIPMENT.

### IMPORTANT NOTE: FCC RF Radiation Exposure Statement

This equipment complies with FCC RF radiation exposure limits set forth for an uncontrolled environment. This equipment should be installed and operated with a minimum distance of 0.5 centimeters between the radiator and your body. This transmitter must not be co-located or operating in conjunction with any other antenna or transmitter.

### Documents / Resources



[SOLUM CS06FHB01 SmartTag Plus Bluetooth Tracker](#) [pdf] User Guide  
CS06FHB01, 2AFWN-CS06FHB01, 2AFWNC06FHB01, CS06FHB01 SmartTag Plus  
Bluetooth Tracker, SmartTag Plus Bluetooth Tracker

### References

- [dtsc.ca.gov/hazardouswaste/perchlorate](http://dtsc.ca.gov/hazardouswaste/perchlorate)