



# SOLLA HT-001 Smart LED Floodlight User Manual

[Home](#) » [SOLLA](#) » SOLLA HT-001 Smart LED Floodlight User Manual 

## Contents

- 1 SOLLA HT-001 Smart LED Floodlight
- 2 SAFETY INSTRUCTION
- 3 PARAMETER
- 4 INSTALLATION
- 5 SOFTWARE INSTALLATION AND USE
- 6 a) COLORS: Move the cursor to choose the color you want.
- FUNCTIONS
- 7 MAINTENANCE
- 8 CONTACT
- 9 Documents / Resources
  - 9.1 References
- 10 Related Posts

***Solla***

## SOLLA HT-001 Smart LED Floodlight



### SAFETY INSTRUCTION

1. Must verify that the supply voltage is correct (110V-130V).
2. Must turn off the electrical power or circuit breaker before installing or servicing.
3. Make sure the product is in good condition before use.  
**DO NOT** attempt to install it if there is damaged or broken.
4. DO NOT try to repair the light by yourself, only qualified electrician can do the repair.
5. DO NOT look directly at the lighted light to avoid damage to your eyes.
6. DO NOT cover anything on the product.
7. Keep the product away from open flames or high-temperature objects.
8. Keep small parts and packaging materials away from children to prevent them from swallowing or suffocation.
9. Non-professionals are not allowed to repair, disassemble, or modify the product.

**(NOTE:** Maintenance, disassembly or modification of the product by non-authorized personnel will void the warranty. )

### PARAMETER

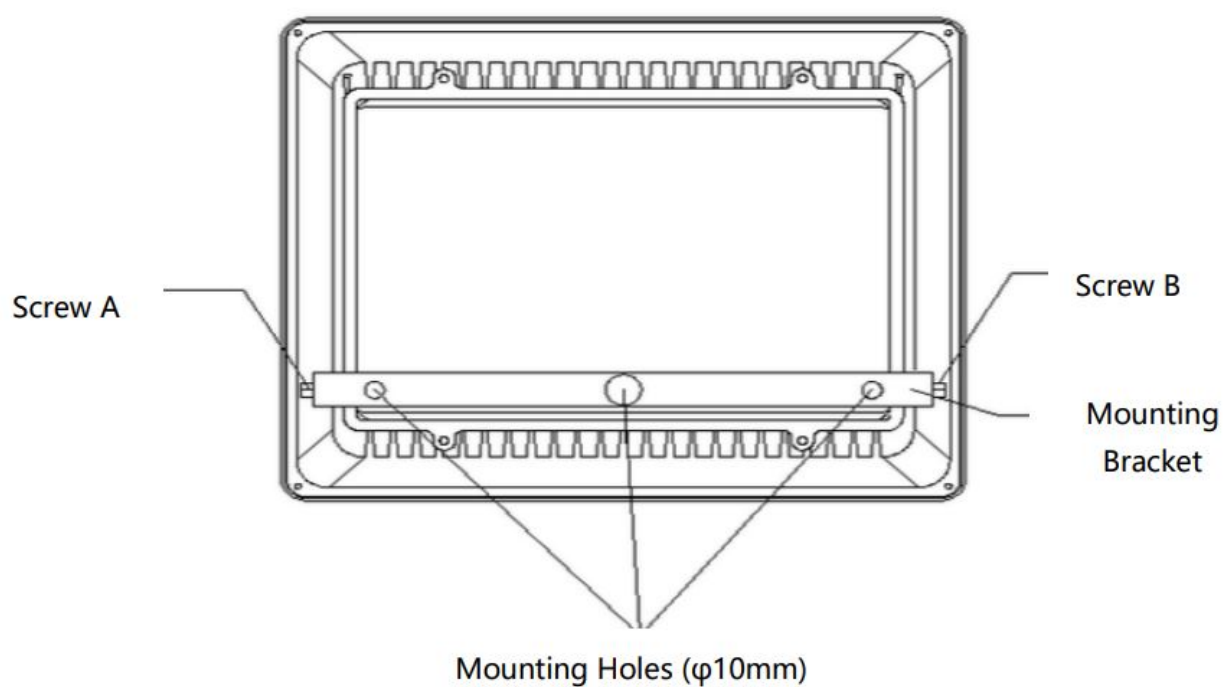
Voltage	AC110V-130V
Power	60W / 100W
Luminous Flux	4800LM / 8000LM
LED Beads	72PCS / 144PCS
Efficacy	80LM/W
CRI	Ra≥70
Power Factor	≥0.90
Operating Humidity	≤85%
Working Temperature	-20°C ~ 55°C

## INSTALLATION

1. Fix the light fixture to the mounting surface or the mounting pole with screws (not included).
2. Loosen the screws (A, B) on both sides of the bracket, adjust the lamp to get the ideal lighting area, then tighten the screws.
3. Plug in the power socket. Installation complete.

### Note:

1. Do not violate any fire protection laws when using the lamp.
2. Please ask a professional electrician for help if you are not familiar with the installation.

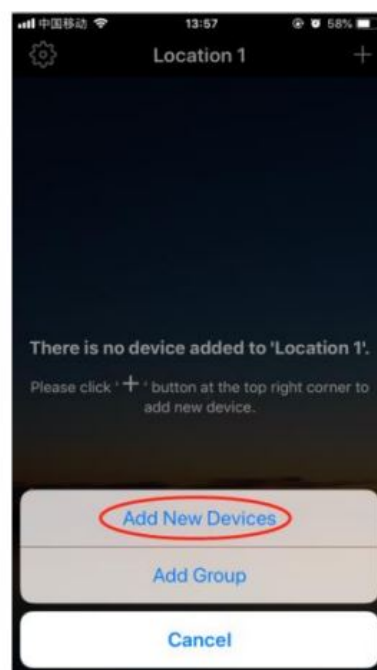
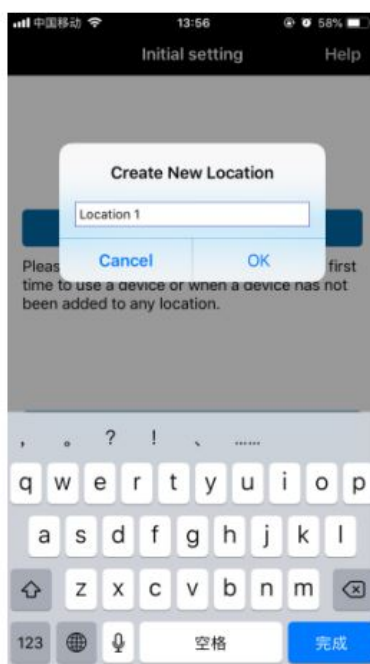
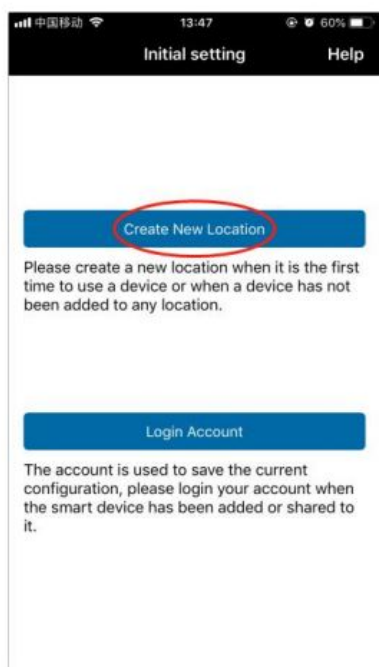


## SOFTWARE INSTALLATION AND USE

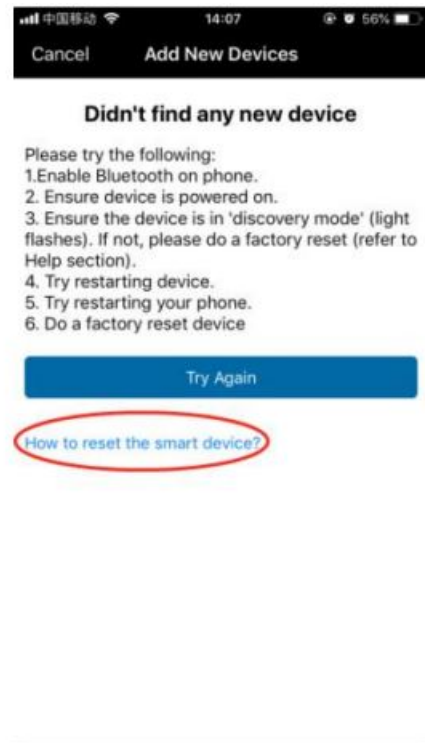
- Quantity: A single location can add 64 devices (the quantity of location is unlimited), and diversified devices can be managed at the same time.
- Group: A single device can exist in 8 groups simultaneously, and a single location can create 32,767 groups.
  1. Scan the QR code below to download the App, or search “Hao Deng” in App Store (IOS) or Google Play Store (Android) to install the app.



2. Open the Bluetooth of your phone.
3. Open the App, click “Create New Location”, then click the button “+” to “Add New Devices”. (Note: Login account can get more functions)

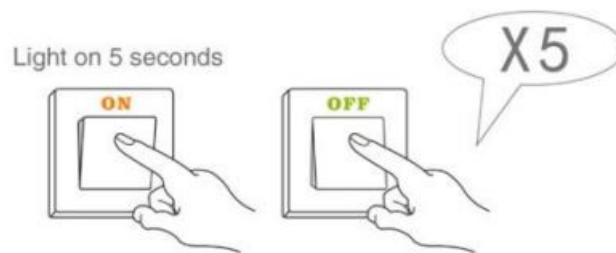


4. Click “Lamp/Switch/Others” to connect the RGB smart light. If it shows “Didn’t find any new device”, please reset the smart device. You can also find the reset details by clicking the blue font at the bottom.



How to reset your smart device?

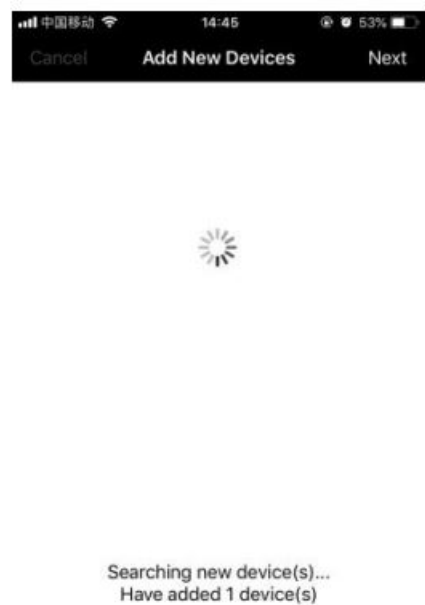
- Please ensure that the device is power off.
- Turn on the light for 5 seconds and then turn it off (repeat 5 times).



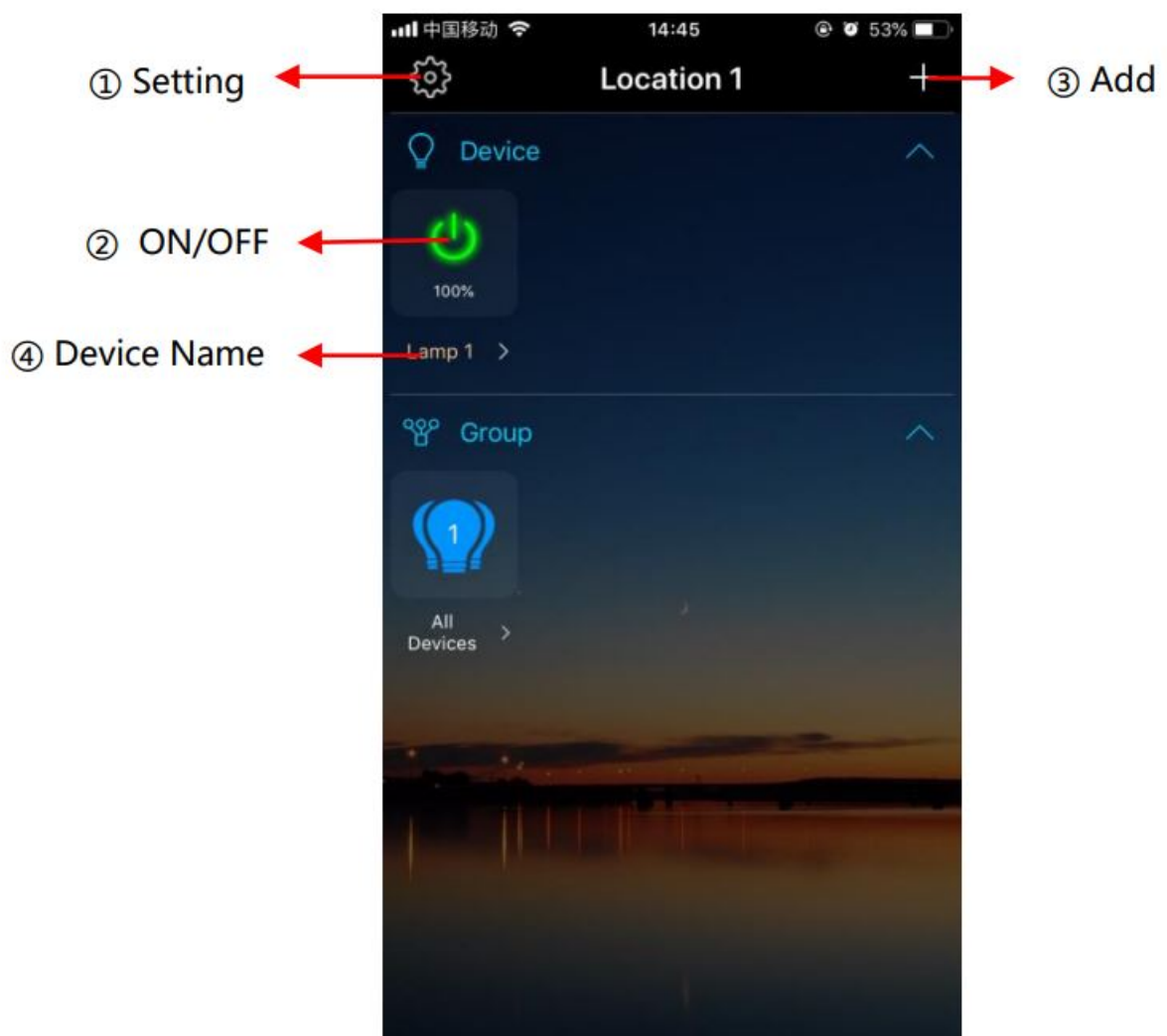
Reset succeed:

You will see the lights flash three times and then change to 'bright up and fade gradually' mode, which means reset successfully.

5. Now, click "Lamp/Switch/Others" again, you will see the device was successfully added.



6. You will enter a page shown as below. Now you can customize your smart light.



## 1. Setting

Sign in or Create an account: You can register or log in your account here.

Location Settings: You can add locations here or view other existing locations.

Share Control: Enter the other user's account to share your current location. (This feature requires login account)

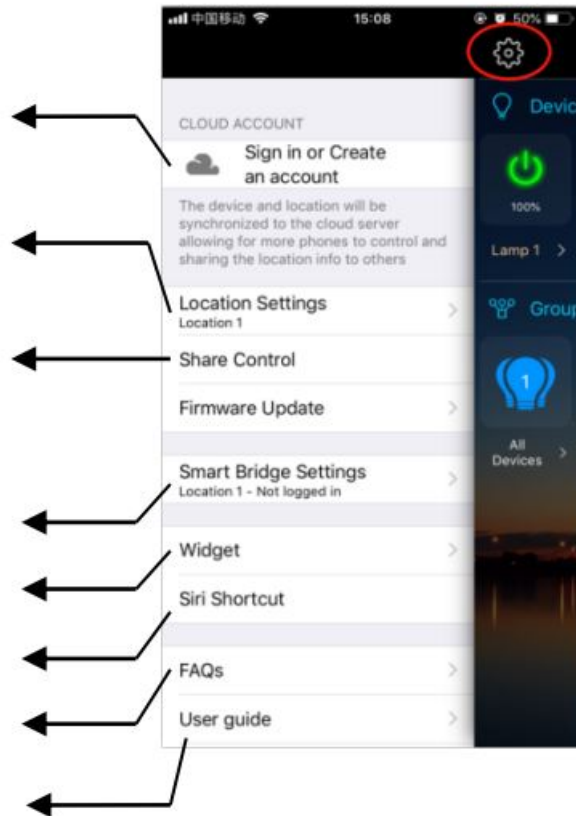
Smart Bridge Settings: Not available for this device.

Widget: Not available for this device.

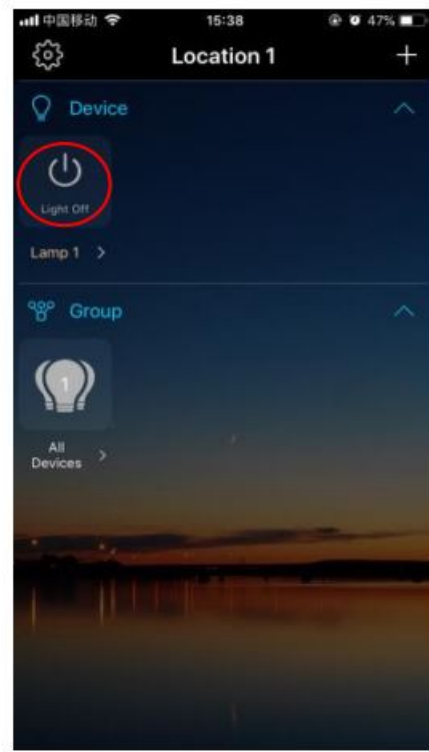
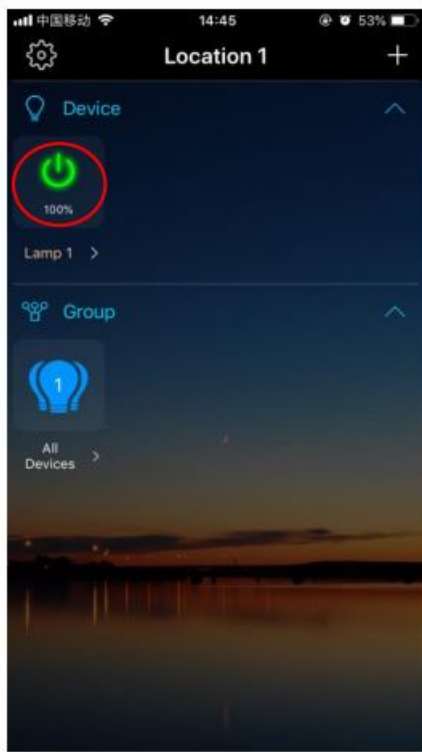
Siri Shortcut: Not available for this device.

FAQs: Questions and solutions

User guide: Operating instructions for first use.

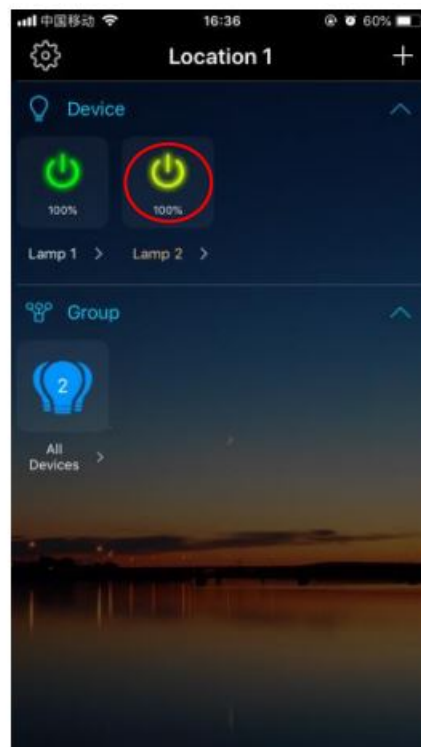
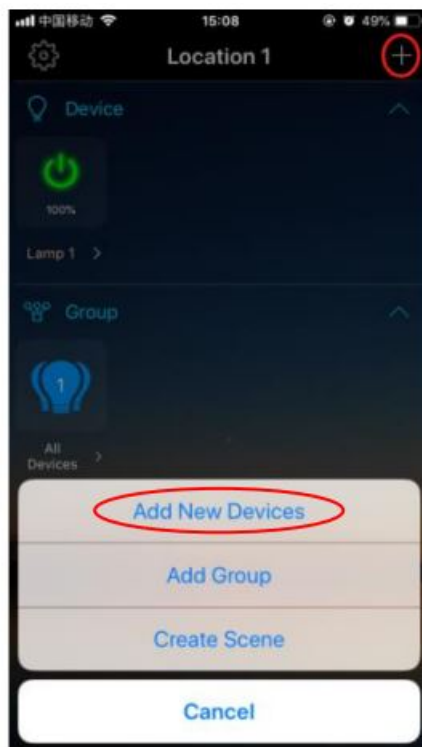


2. ON/OFF: Turn on/off the light.



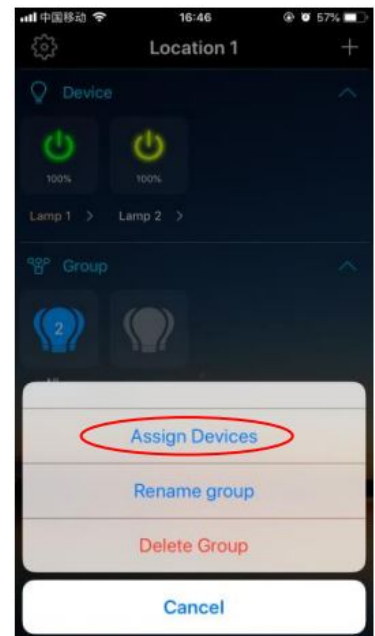
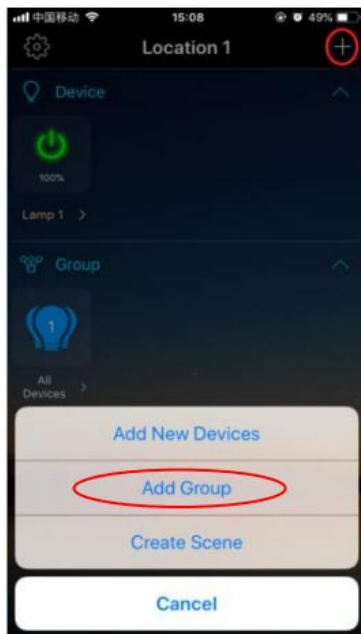
3. Add: Add new devices/group or create scene. (This function requires two or more devices to operate.)

- Add New Devices

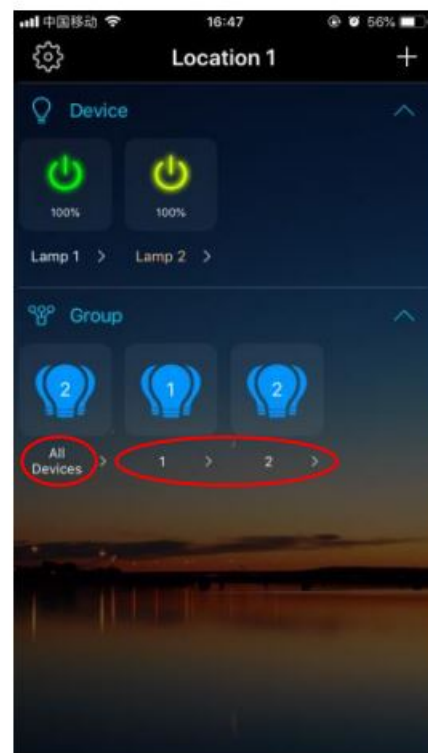
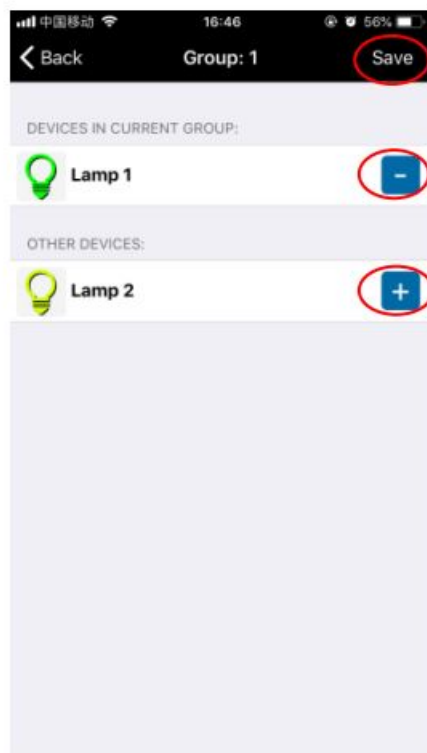


- Add Group: You can collect the smart lights into one group or divide them into different groups. "Add Group" and name it, long press to "Assign Devices" or "Rename/Delete Group".



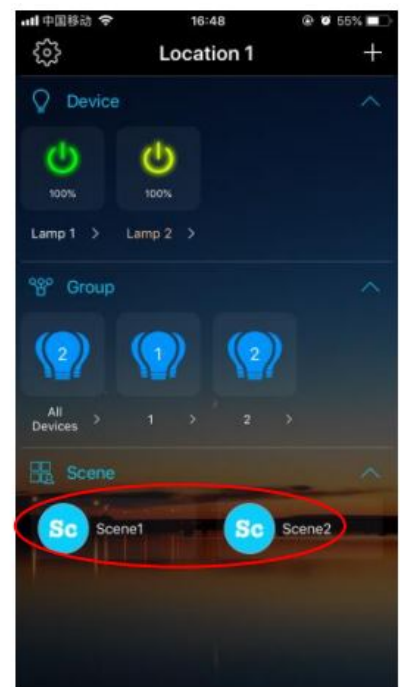
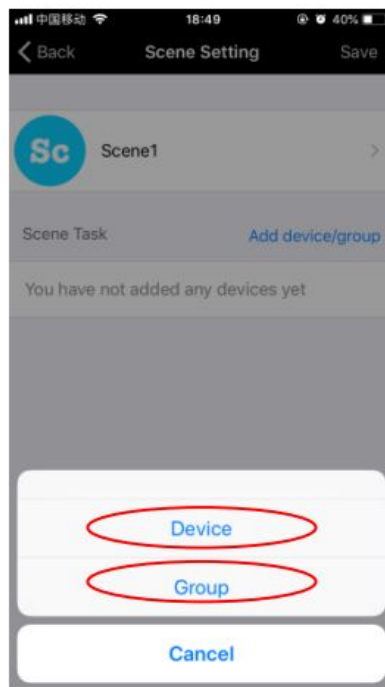
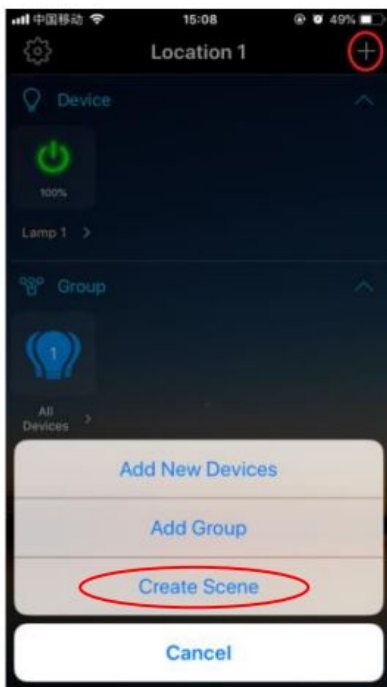


- Press “+/-” to add/delete the lamp(s) to current group and “Save” it.



- Click “All Devices” to control all devices simultaneously, or click the group name to control devices assigned.

4. Create Scene: You can set shortcuts for different devices or groups. “Create Scene” and name it, press “Add device/group”



to add the device or group that you want to control directly on the home page

5. Device Name: Click the device name (lamp 1) to enter the function control page.

**(Top Half)**

a) Back

b) RGB

c) Timer

d) More

e) On/Off



**(Bottom Half)**

a) COLORS

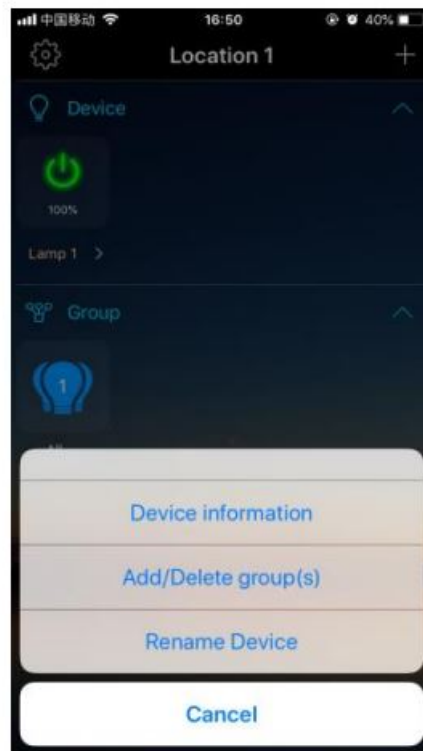
b) FUNCTIONS

c) MIC

e) CAMERA

d) MUSIC

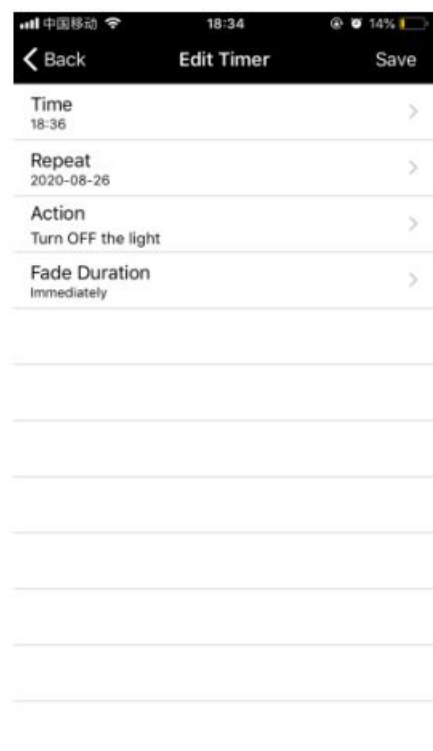
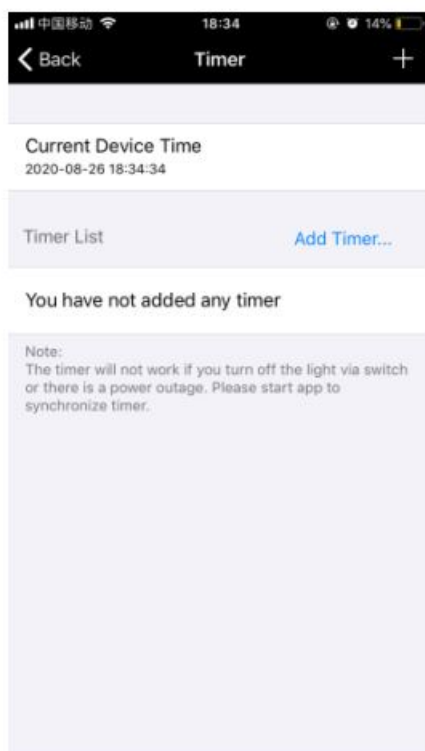
Note: Long press the device name, you can see your device information, add/delete group(s) and rename your device.



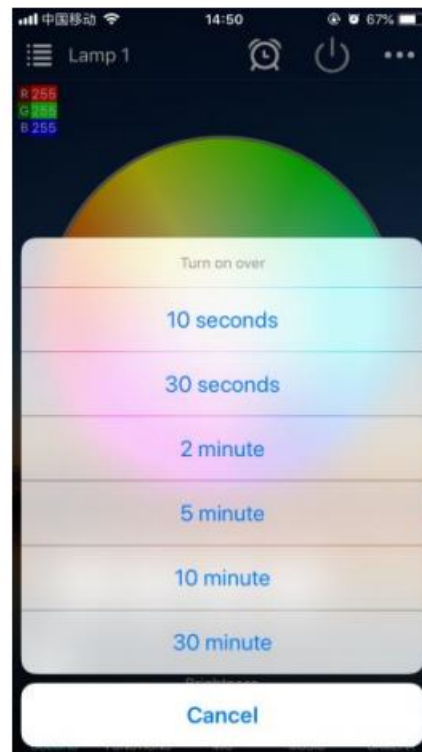
## Top Half



- a) Back: Return to the home page
- b) RGB: Color value
- c) Timer: Apart from setting the timing to turn on or off, you can also set the timing to turn on a certain mode.

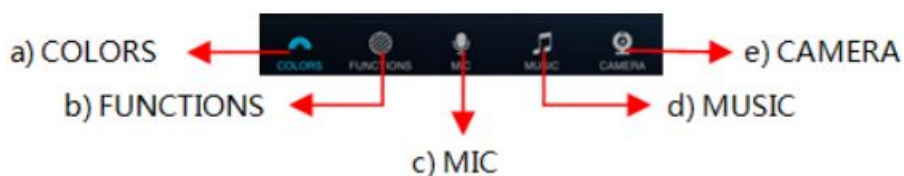


- d) More: You can check your device information or turn on/off the light slowly.

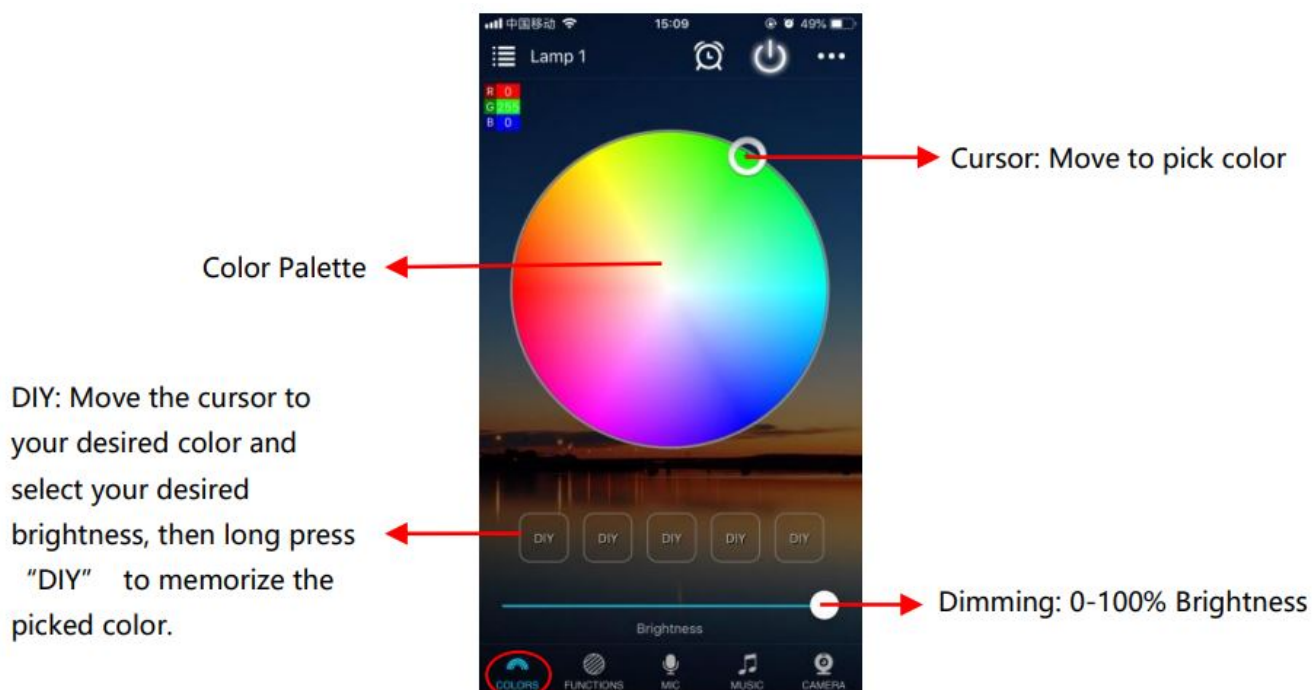


- e) On/Off: Turn on/off the light

## Bottom Half

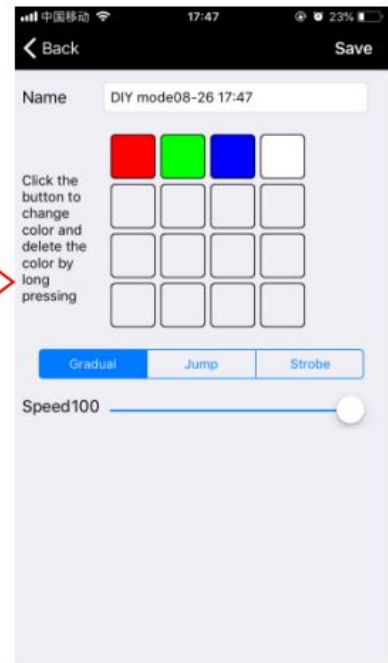
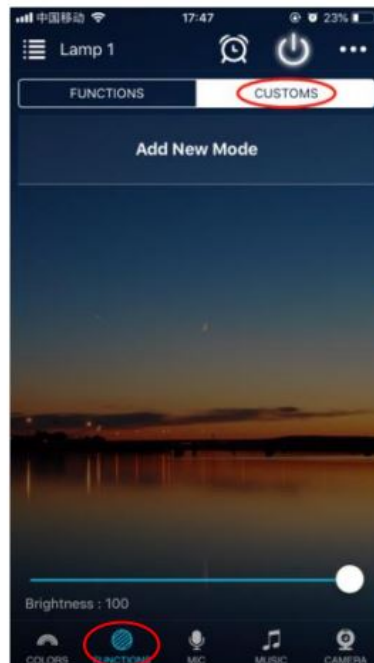


a) **COLORS:** Move the cursor to choose the color you want.



## FUNCTIONS





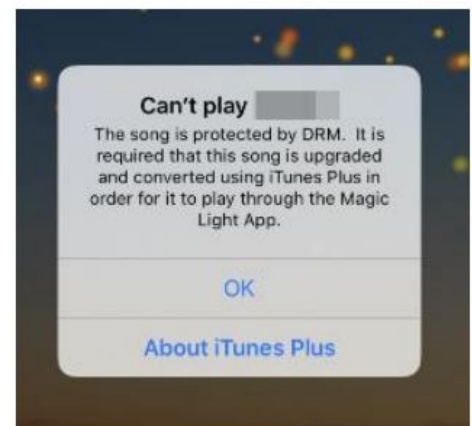
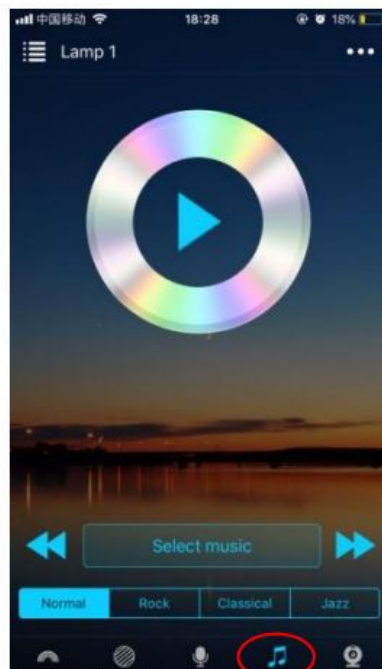
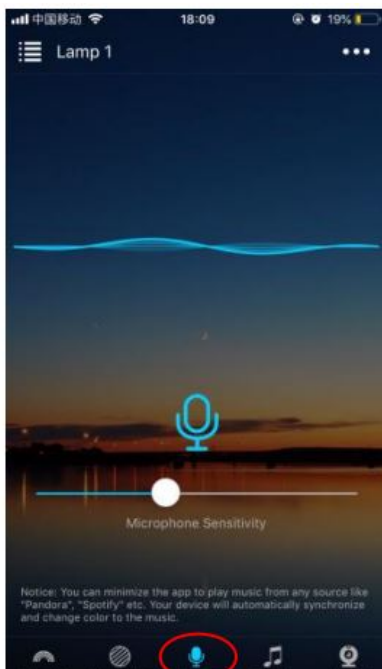
Functions: There are 20 pre-set dynamic modes. (The speed and brightness can be adjusted.) Customs: You can DIY your dynamic modes, and up to 16 colors can be customized.

(Dynamics: Gradual, Jump, Strobe. (The speed and brightness can be adjusted.))

Any outside sound can be received through the microphone of your mobile phone to make the light color change according to its audio frequency and rhythm.

You can choose to play the music in the specified music player, and the color of the light will change according to the rhythm of the music to achieve the music rhythm effect.

When you want to use music function in iOS, please note that this app only supports musics in Apple music. If it prompts that the song is protected by DRM, you will need to upgrade and convert it through iTunes Plus.



- e) CAMARA: The color of the light can change with the color of any object photographed by the phone camera.



## NOTE

1. Use the APP, Hao Deng, to control the RGB light.
2. Only one account can control the lights at a time.
3. Do not immerse the light in the water.
4. Alexa and Google Home are not supported.

## MAINTENANCE

1. Make sure the power is off before maintenance.
2. Periodically clean the surface of the light with a clean damp cloth.
3. Do not use any detergents or chemicals.

## CONTACT

Please feel free to contact us if you have any problems or questions.

- [vip@solla.us](mailto:vip@solla.us)
- [www.solla.us](http://www.solla.us)
- [www.facebook.com/sollaled](https://www.facebook.com/sollaled)

## Documents / Resources

	<p><a href="#">SOLLA HT-001 Smart LED Floodlight</a> [pdf] User Manual HT-001, Smart LED Floodlight</p>
-----------------------------------------------------------------------------------	-------------------------------------------------------------------------------------------------------------

## References

- [f SOLLA - Home](#)
- [SOLLA Official SOLLA Online Store American Express Apple Pay Mastercard PayPal Visa](#)