



**Type 8510 ICE
cube maker**



solis Type 8510 ICE cube maker User Manual

[Home](#) » [solis](#) » solis Type 8510 ICE cube maker User Manual 

Contents

- [1 solis Type 8510 ICE cube maker](#)
- [2 Product Information](#)
- [3 Product Usage Instructions](#)
- [4 IMPORTANT SAFETY PRECAUTIONS](#)
- [5 PACKAGE CONTENTS](#)
- [6 APPLIANCE DESCRIPTION](#)
- [7 BEFORE FIRST USE](#)
- [8 INSTALLATION](#)
- [9 USING INSTRUCTION](#)
- [10 RUNNING THE CLEANING CYCLE](#)
- [11 TECHNICAL SPECIFICATIONS](#)
- [12 TROUBLESHOOTING](#)
- [13 DISPOSAL](#)
- [14 2 YEAR GUARANTEE](#)
- [15 Documents / Resources](#)
 - [15.1 References](#)



solis Type 8510 ICE cube maker



Product Information

The ICE CUBE EXPRESS ICE MAKER is designed to make and store ice cubes of various sizes. It features automatic detection for when the collecting tray needs to be emptied or when the water level is low. The appliance comes with various components including freezing bars, an ice shovel, a water reservoir, control buttons, a power cable, a filter, a collecting tray, a scoop, and a drain plug.

Specifications

- **Product Name:** ICE CUBE EXPRESS
- **Type:** 8510

Product Usage Instructions

Before First Use

1. Clean all parts of the appliance with a mild detergent and water.
2. Leave the parts to dry completely.
3. Install the appliance according to the installation instructions.
4. Press and hold the power button for 3 seconds to initiate the cleaning cycle.
5. Unplug the drain plug at the bottom of the appliance to drain all water completely.
6. Wipe the inside of the appliance with a clean, dry cloth to remove any remaining water.
7. Plug the drain plug back into place.

Installation

1. Place the appliance in an upright position on a clean, dry, stable, flat, and moisture-resistant surface.
2. Plug the power cable into a power outlet to enter standby mode.

3. Remove the scoop and collecting tray from the appliance.
4. Fill the water reservoir with clean, fresh water.

FAQ

Q: Why are my ice cubes small and irregular at first?

A: Initially, ice cubes may be small and irregular, but after a short period of use, they will be dispensed in a uniform size.

INTENDED USE

- This appliance is intended to make and store ice cubes.
- Only use the appliance as described in this manual.
- This appliance is intended to be used in household and similar applications such as:
 - staff kitchen areas in shops, offices, and other working environments;
 - farm houses;
 - by clients in hotels, motels, and other residential-type environments;
 - bed and breakfast type environments and not for commercial use.
- This appliance is intended for indoor use only.
- This appliance can be used by children aged 8 years and above and persons with reduced physical, sensory, or mental capabilities or lack of experience and knowledge if they have been given supervision or instruction concerning the use of the appliance in a safe way and understand the hazard involved. Children shall not play with the appliance. Cleaning and user maintenance shall not be done by children without supervision.
- Children under the age of 8 years should not use the appliance.
- Any use of the appliance other than described in this manual is regarded as misuse and may cause injury, or damage to the appliance and void the warranty.

IMPORTANT SAFETY PRECAUTIONS

General safety instructions

WARNING

- Ensure you have fully read and understood the instructions in this user manual before you install or use the appliance. Keep this document for future reference.
- Keep the appliance and the power cord away from children and pets.
- Do not use the appliance if a part is damaged or defective. Replace a damaged or defective appliance immediately.
- If the power cable or the appliance is damaged, return the whole appliance to Solis or to a service agent authorized by Solis for repair.
- Do not disconnect the appliance from the mains by pulling on the cable. Always grasp the power plug and pull.

Safety instructions regarding installation

WARNING

- Do not drop the appliance and avoid bumping.
- Suffocation hazard! Keep packaging material, including plastic bags, out of the reach of children.
- Place the appliance on a stable, flat, heat and moisture-resistant surface.
- Keep a minimum safety distance of 20 cm between the appliance and walls, curtains, or other materials and objects, and make sure that the air around the appliance can circulate freely.
- Do not place the appliance in direct sunlight.
- Before using the appliance, check that the voltage stated on the type plate of your appliance matches your main voltage. Do not operate the appliance with a multiway plug adapter.
- Never use the appliance with an external timer switch or remote control.
- Do not leave the power cable hanging over the table edges to prevent the appliance from being pulled down or knocked over. Make sure that neither the appliance nor the power cord or plug comes into contact with hot surfaces, such as hotplates or a radiator, or that they come into contact with the appliance itself.
- Never place the appliance in such a way that it is at risk of falling into water or coming into contact with water resp. other liquids (e.g. in or near a sink).
- Never reach for an appliance that has fallen into water or other liquids:
 - Always wear dry rubber gloves to unplug the appliance before taking it out of the water.
 - Do not start using the appliance again before having it checked for functionality and safety by Solis or a service center authorized by Solis.
- Do not place the appliance directly under a power outlet.
- Switch off and unplug the appliance before moving the appliance.
- Keep the appliance away from hot gas, hot ovens, and other heat-emitting appliances or heat sources. Never use the appliance on a hot or wet surface. Never place the appliance near moisture, heat, and naked flames. Keep the appliance away from moving parts or appliances.
- Fully unwind the power cable before use.

Safety instructions regarding use

WARNING

- Children must be supervised to ensure that they do not play with the appliance.
- Do not operate the appliance with wet hands.
- Only use the appliance with the provided accessories or accessories recommended by Solis. Incorrect accessories or misuse can lead to damage to the appliance.
- Do not insert sharp or pointed objects into the openings of the appliance. This may damage the appliance or result in electric shock.
- Do not cover the appliance or the air vents when the appliance is in use shortly after the appliance is switched off.
- Do not shake, move, or lift the appliance while it is in use.
- Unplug the appliance when it is not in use or unattended, and before cleaning.
- Risk of appliance damage! Never let dust, dirt, or lint get into the appliance. The appliance may get damaged.
- Do not move the appliance when in use.

Safety instructions regarding maintenance

WARNING

- Unplug the appliance before service and when replacing parts.
- Never clean the appliance with metal sponges. The metal particles in the sponge could come loose and touch the electrical components in the appliance, causing electric shock. For the same reason, no other electric devices must come into contact with the appliance.
- Always keep the appliance and the accessories clean. The parts are not dishwasher-safe.
- Never store explosive or flammable substances like aerosol containers (deodorant sprays, hair sprays, etc.) in or near the appliance.
- Never immerse the appliance in water or other liquids or place it in a dishwasher.
- Never unplug the appliance when the appliance is still switched on, or parts in the appliance are still moving.
- Do not use abrasive chemical cleaning agents such as ammonia, acid, or acetone when cleaning the appliance. This can damage the appliance.
- Never pull on the power cord to unplug the appliance. Only pull on the plug.

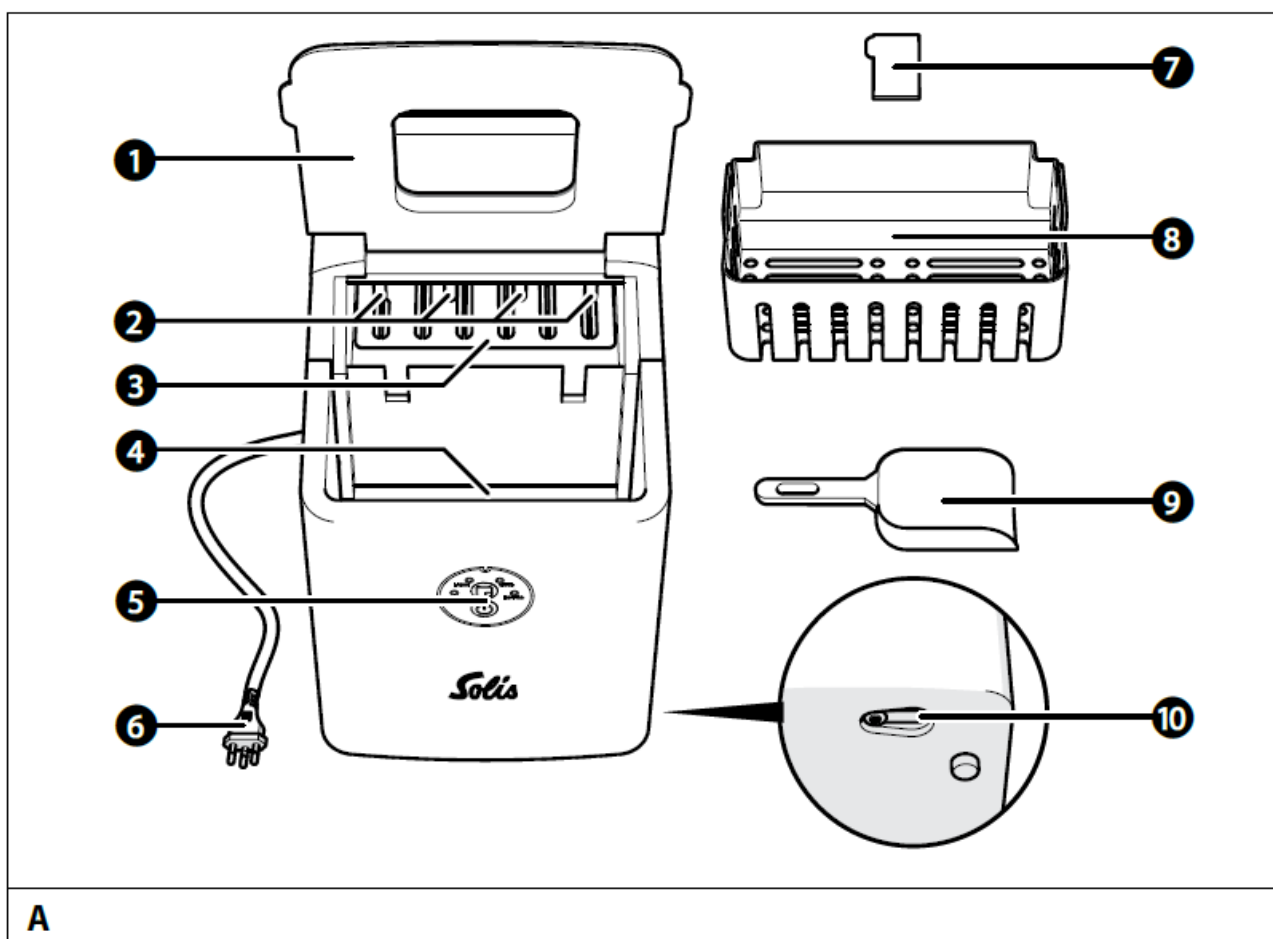
PACKAGE CONTENTS

Please check the contents of the package:

- 1× ICE CUBE EXPRESS ICE MAKER
- 1× Manual
- 1× Scoop

APPLIANCE DESCRIPTION

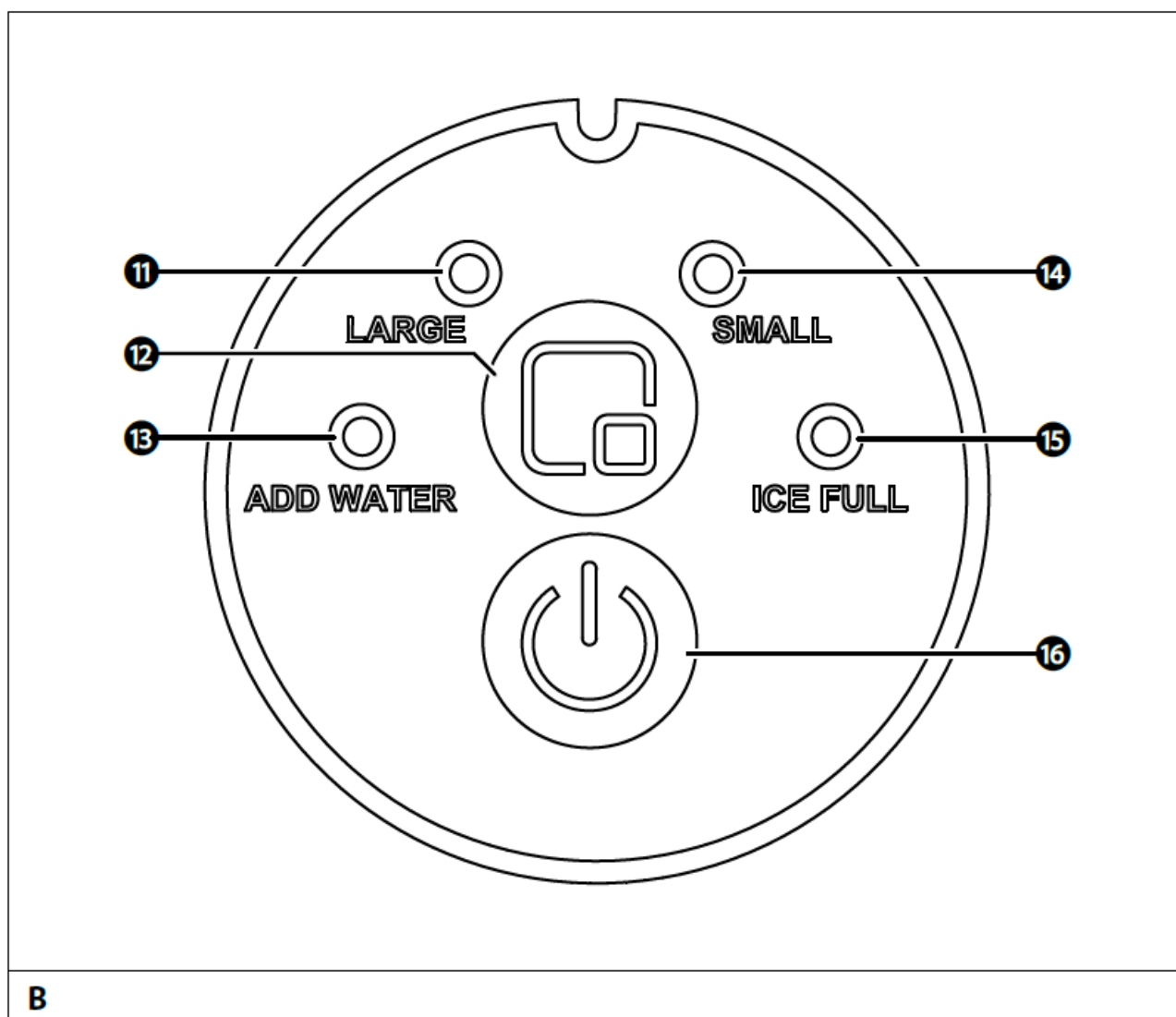
The ICE CUBE EXPRESS ICE MAKER is an appliance that is used to make and store ice cubes. The appliance can make both small and large ice cubes that are automatically moved into the collecting tray. The appliance automatically detects when the collecting tray needs to be emptied or when the water level is too low.



A

1. Lid
2. Freezing bars
3. Ice shovel
4. Water reservoir
5. Control buttons
6. Power cable
7. Filter
8. Collecting tray
9. Scoop
10. Drain plug

CONTROL BUTTONS



B

11. LARGE indicator light
12. Ice size select button
13. ADD WATER indicator light
14. SMALL indicator light
15. ICE FULL indicator light
16. Power button

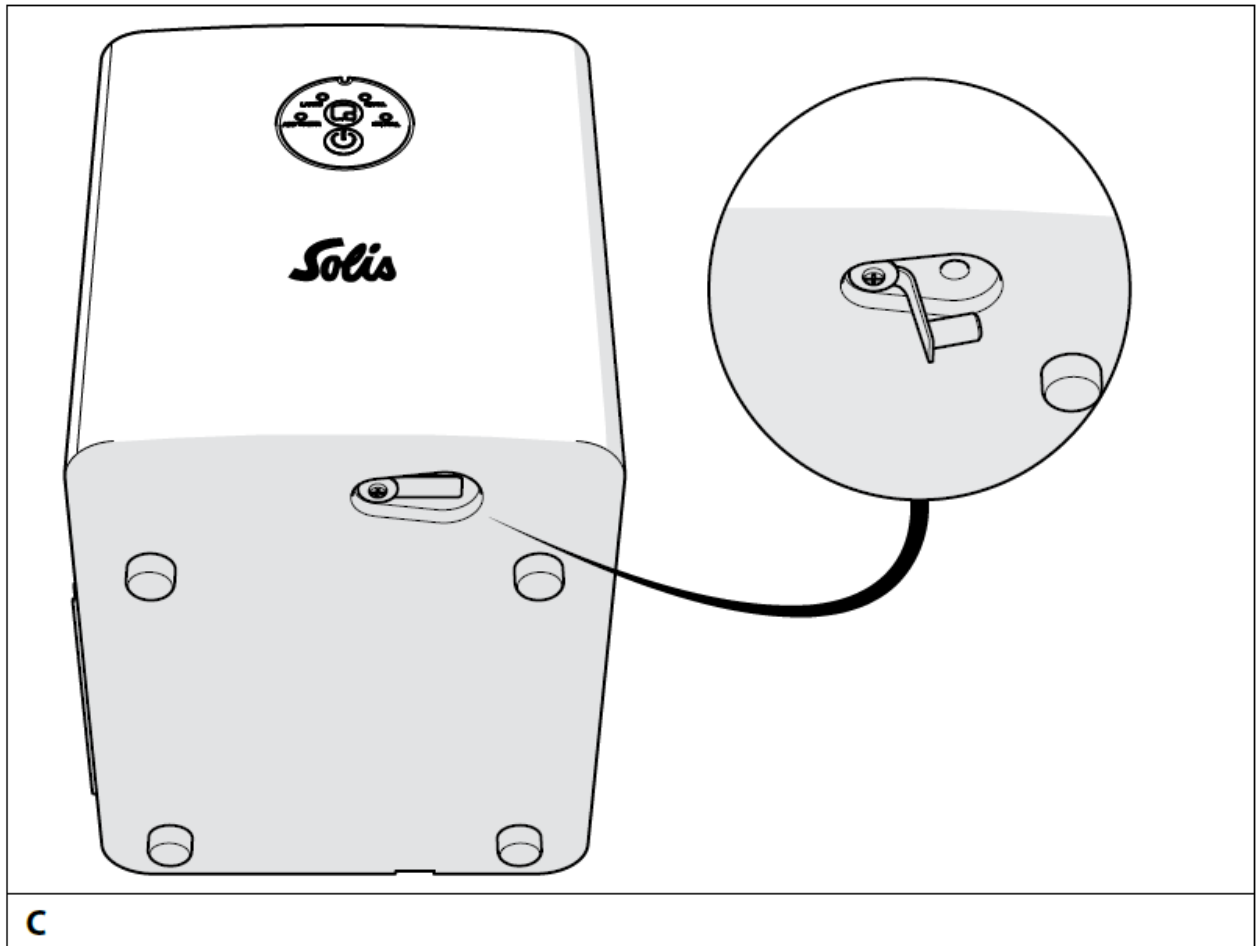
BEFORE FIRST USE

To prepare the appliance before first use:

1. Rinse the following parts with hot water:
 - Filter 7
 - Collecting tray 8
 - Scoop 9
2. Leave the parts to dry.
3. Install the appliance according to chapter Installation.
4. Press and hold the power button 16 for 3 seconds. The appliance enters the cleaning cycle. The indicator lights on the control panel light up sequentially.
 - Do not disconnect the power supply during cleaning.

When the cleaning has finished, the appliance will enter standby mode automatically, and the LARGE

indicator light flashes green.



5. Unplug the drain plug 10 on the bottom and let all the water completely drain out (see image C).
 - Ensure that the device is not tilted or only tilted very briefly during this process. If the device is tilted for a longer period, please let it stand upright for 12 hours before using it again.
6. Wipe the inside of the appliance with a clean, dry cloth to remove any water left.
7. Plug the drain plug 10 back into place.

The appliance is now ready for use.

At the start of ice production, the ice cubes might be small and irregular. However, after a short period, ice cubes will be dispensed in uniform size.

INSTALLATION

To install the appliance:

1. Place the appliance in an upright position on a clean, dry, stable, flat, and heat and moisture-resistant surface.
 - If the appliance has been tilted for storage or transportation, please let it stand upright on its feet for 12 hours before switching it on.
2. Plug the power cable 6 into a power outlet. The appliance enters standby mode, and the LARGE indicator light 11 flashes green.
3. Remove scoop 9 and collect tray 8 from the appliance.
4. Fill the water reservoir 4 with clean, fresh water.
 - Never fill the water reservoir above the MAX indicator.

- Never fill the appliance with liquids other than clear and fresh tap water (without carbonation).
5. Place the collecting tray 8 back into the appliance.

USING INSTRUCTION

MAKING ICE CUBES

To make ice cubes:

1. Press the ice size select button 12 to select the desired ice size. The corresponding indicator light blinks.
 - If the ambient temperature is below 15°C, it is advised to only make small ice cubes. Above 30°C, only large ice cubes should be made. In between, both sizes are possible.
2. Press the power button 16 on the control buttons 5. The appliance starts with the ice production, and the corresponding indicator light 11 lights up green.

REMOVING ICE

The appliance automatically detects when the collecting tray is full. The ICE FULL indicator light lights up. Always empty the ice cube tray when the indicator light lights up.

- In front of the collecting tray is a sensor. If an ice piece remains at this location, the appliance stops, and the ICE FULL indicator light lights up, even if the collecting tray may not be full. Remove the stuck ice piece, and the machine will resume normal operation.

REFILLING WATER

The appliance detects automatically when there is a shortage of water in the water reservoir and no ice can be produced anymore. The ADD WATER indicator light lights up.

1. Remove any ice from the collecting tray 8.
2. Remove the collecting tray 8 from the appliance.
3. Fill the water reservoir 4 with clean, fresh water.
 - Never fill the water reservoir above the MAX indicator.
4. Place the collecting tray 8 back into the appliance.

DRAINING WATER

We recommend refreshing the water after each use. To drain the water:

1. Switch off and unplug the appliance.
2. Remove any ice from the collecting tray 8.
3. Remove the collecting tray 8 from the appliance.
4. Let the appliance sit for a few hours so any built-up ice melts.
5. To drain the water, hold the appliance with the bottom over the sink and pull out the drainage plug 10 located on the underside. Allow the water to drain completely (see image C). Avoid tilting the appliance for an extended period. If the appliance has been tilted for an extended period, please let it stand upright on its feet for 12 hours before using it again.
6. Wipe the inside of the appliance with a clean, dry cloth to remove any water left.
7. Plug the drain plug 10 back into place.

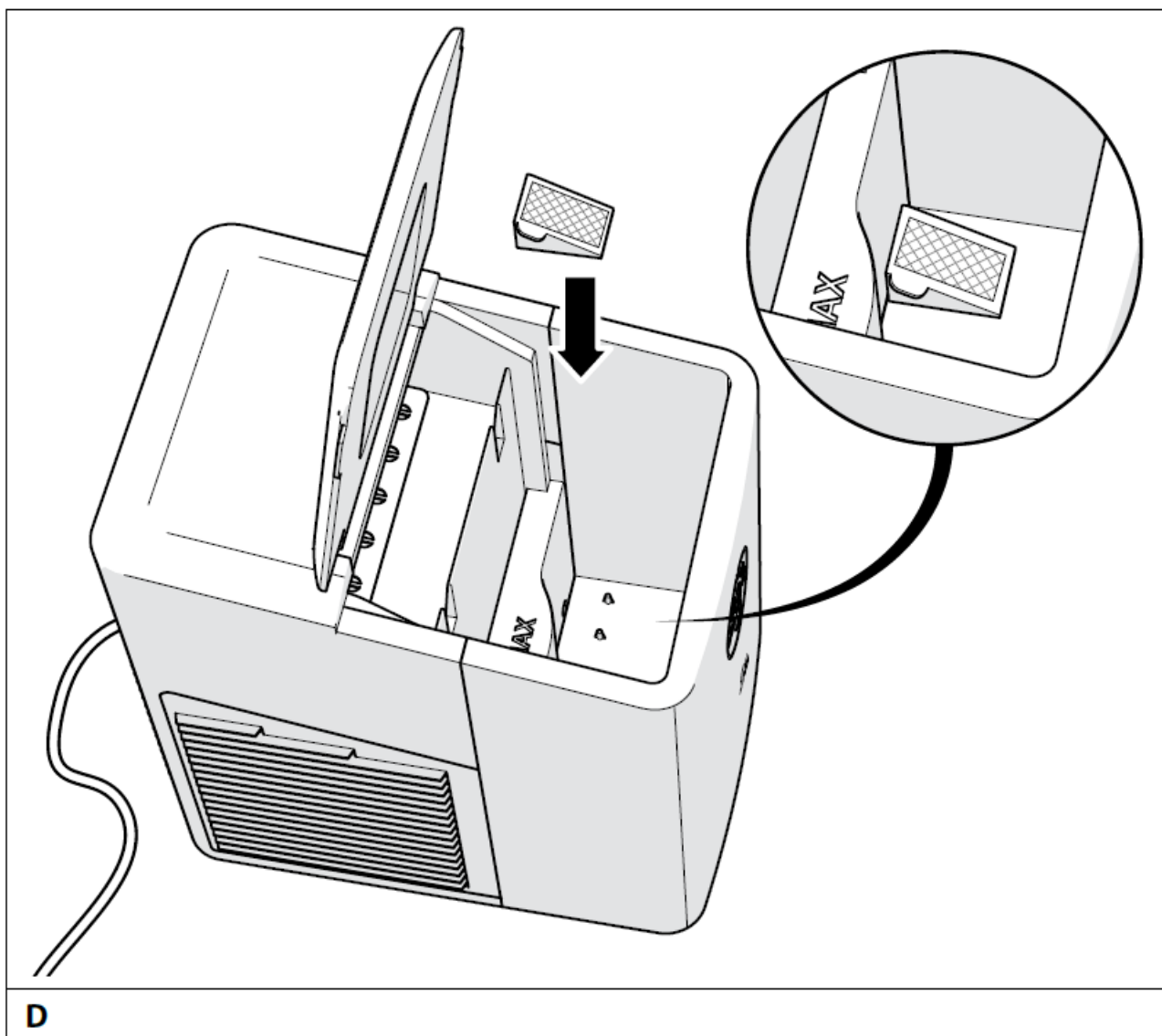
SWITCHING OFF THE APPLIANCE

Press the power button 16. The LARGE indicator light 11 will flash. Wait until the compressor has switched off after a short delay and there are no moving parts inside the appliance. Unplug the appliance.

RUNNING THE CLEANING CYCLE

We recommend cleaning the appliance every month. To clean the appliance:

1. Drain the water from the appliance (see chapter Draining Water).
2. Clean the inside of the appliance with a diluted mixture of water and vinegar with a soft, slightly moist towel.
3. Fill the water reservoir 4 with clean, fresh water.
 - Never fill the water reservoir above the MAX indicator.
4. Press and hold the power button 16 for 3 seconds. The appliance enters the cleaning cycle. The indicator lights on the control panel light up sequentially.
 - Do not disconnect the power supply during cleaning.
 - When the cleaning has finished, the appliance will enter standby mode automatically, and the LARGE indicator light flashes green.
5. To drain the water, hold the appliance with the bottom over the sink and pull out the drainage plug 10 located on the underside. Allow the water to drain completely (see image C). Avoid tilting the appliance for an extended period. If the appliance has been tilted for an extended period, please let it stand upright on its feet for 12 hours before using it again.
6. Wipe the inside of the appliance with a clean, dry cloth to remove any water left.
7. Remove the filter 7 from the bottom of the water reservoir 4 and rinse it with warm water.



8. Reinstall the filter 7 back in the appliance on the bottom of the water reservoir 4 (see image D).

STORAGE

- Store the appliance in a dry and enclosed space.
- The appliance must be stored upright on its feet (with the opening facing upward) and should not be stored on its side or even upside down.
- The appliance must stand upright on its feet for 12 hours before each use.

TECHNICAL SPECIFICATIONS

Model-No.	Type 8510
Voltage/frequency	220–240 V~ / 50 Hz
Output	120 W
Water tank capacity	1 L
Dimensions (W × D × H)	21 × 28 × 26 cm
Weight	6.0 kg

TROUBLESHOOTING

Problem	Possible cause	Solution
The appliance does not function.	The power connection is not working.	Make sure the power cable is connected to a working power source.
	The appliance is not switched on.	Press the power button.
	The appliance is damaged.	Press the power button. If the appliance doesn't switch on, the appliance is damaged. Contact Solis or a Solis authorized service center.

DISPOSAL

This marking indicates that this product should not be disposed of with other household wastes throughout the EU. To prevent possible harm to the environment or human health from uncontrolled waste disposal, recycle it responsibly to promote the sustainable reuse of material resources. To return your used device, please use the return and collection systems or contact the retailer where the product was purchased. They can take this product for environmentally safe recycling.

2 YEAR GUARANTEE

Only valid with a till receipt.

We provide a guarantee for this appliance, if the defect has demonstrably arisen as a result of faults in the material or construction, and has arisen despite proper handling and care. Glass breakage is not covered by the guarantee. The guarantee starts from the date of sale, as noted on the sales receipt, which must be enclosed with the appliance. For commercial use, the guarantee lasts for 12 months. The detailed guarantee conditions are available at www.solis.com.

SOLIS CUSTOMER SERVICE

It is always worth calling us before sending in the article, as malfunctions can often be easily solved by the appropriate tip or trick from our experts. For country-specific contact information, scan the QR code, follow the web link, or call us.



- +41 44 874 64 64
- www.solis.com/service.


Solis of Switzerland Ltd

Solis-House • CH-8152 Glattbrugg-Zurich • Switzerland www.solis.ch • www.solis.com.

Please visit us at

www.solis.com.

Documents / Resources

	<p>solis Type 8510 ICE cube maker [pdf] User Manual Type 8510 ICE cube maker, Type 8510, ICE cube maker, maker</p>
---	--

References

- [Solis of Switzerland - Schweiz - Swiss quality household appliances](#)
- [Solis of Switzerland - International - Swiss quality household appliances](#)
- [User Manual](#)

[Manuals+](#), [Privacy Policy](#)

This website is an independent publication and is neither affiliated with nor endorsed by any of the trademark owners. The "Bluetooth®" word mark and logos are registered trademarks owned by Bluetooth SIG, Inc. The "Wi-Fi®" word mark and logos are registered trademarks owned by the Wi-Fi Alliance. Any use of these marks on this website does not imply any affiliation with or endorsement.