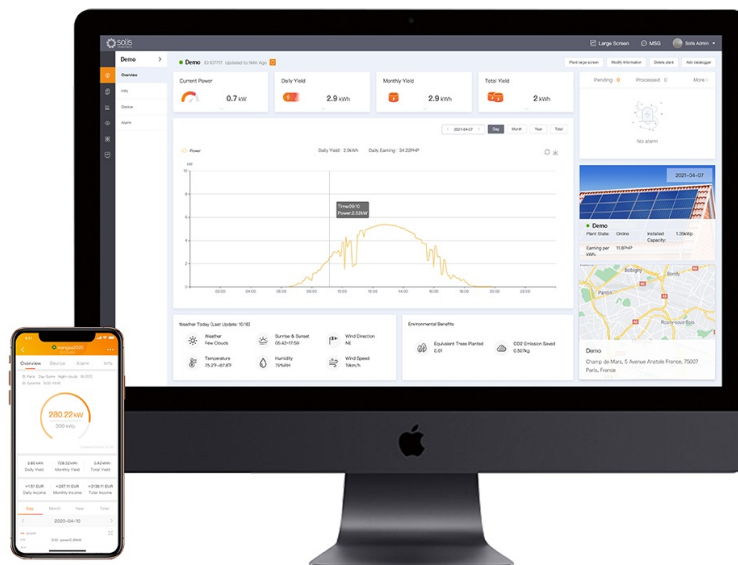




SolisCloud Customer Monitoring Account Setup User Manual

[Home](#) » [solis](#) » SolisCloud Customer Monitoring Account Setup User Manual 

SolisCloud Customer Monitoring Account Setup User Manual



Contents

- 1 Inductions
- 2 Documents / Resources
 - 2.1 References
- 3 Related Posts

Inductions

STEP 1:

- Go to www.soliscloud.com.
- First time users who do not have an account, click **[Sign Up Now]** to create an account.

- For the users who have finished the registration or already have the account setup. Please enter the email address or username and password to log in. You may click the [Remember] option to save the data in the browser.



Figure 1 SolisCloud Login Page

STEP 2:

- If you are the owner of the system, please select [Register Owner].
- If you are the installer or retailer and want to monitor all the system you installed or sold, please select [Registered Organization]. The organization register procedure can be found in the “SolisCloud Monitoring System – Organization Manual” available on our website.

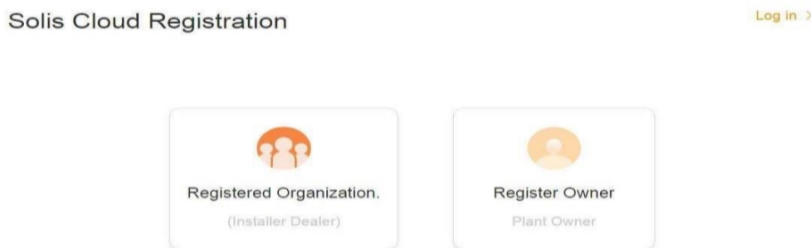


Figure 2 SolisCloud Registration

STEP 3:

- Fill in valid email address and the **Verification code** option will be clickable.
- Click the “**Verification code**” and you will receive an email from “Solis Cloud” with a verification code.
- Enter the Verification code and user information, please review and select the “User Privacy Agreement”.
- Click “**Register**” to finish the registration.

***Note** – If you cannot find the email in your inbox, please check your spam and junk folder as well.

* Email

* Vcode

* User Name

* Password

☐ I have read and agree [User Privacy Agreement](#)

Figure 3 Owner Registration Page

STEP 4:

- Once you are registered and logged in, you will see Plant overview page, **see Fig 4.**
- Users will need to add a plant when logging into SolisCloud platform for the first time. Click [Add Plant] to enter the plant creation interface.

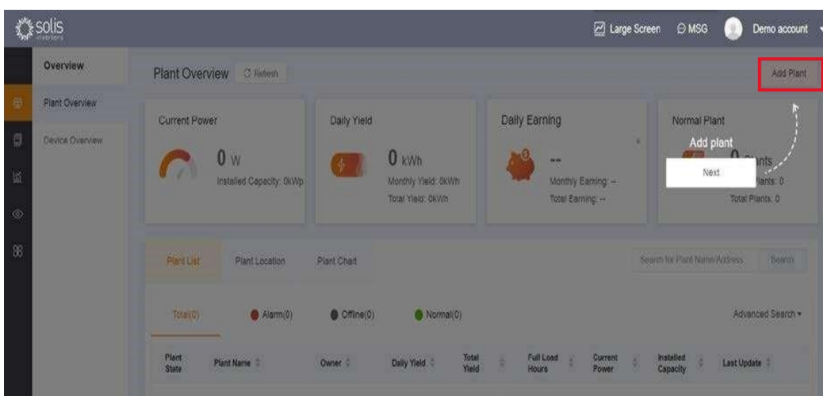


Figure 4 Plant Overview Screen

STEP 5:

- Plant Creation Interface page will appear as shown below, **Fig.5**
- The information in this page can be completed with the help of your installer.
- Search and enter the [Organization Code] to connect your DNSP or Installer, then your plant will be linked to the DNSP or installer's account. (DNSP – Distribution Network Service Provider)

***Note** – If the installer is not available, you can fill the information to the best of your knowledge, as it DOES NOT affect the data logging capabilities or the performance of the system.

Figure 5 Fill plant information

- Please click on [Create Plant] in Fig.5 after filling in all the required information, to add plant successfully, see Fig.6

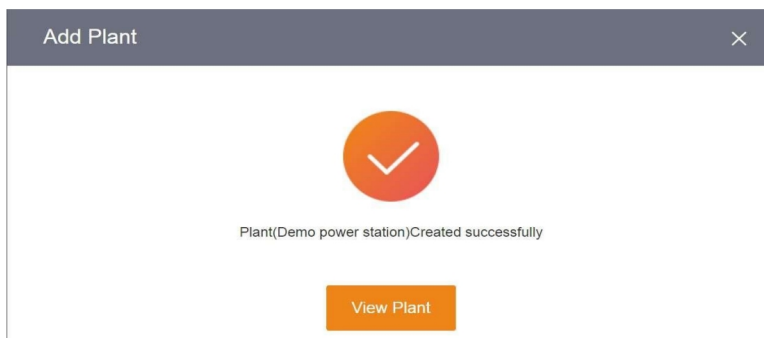
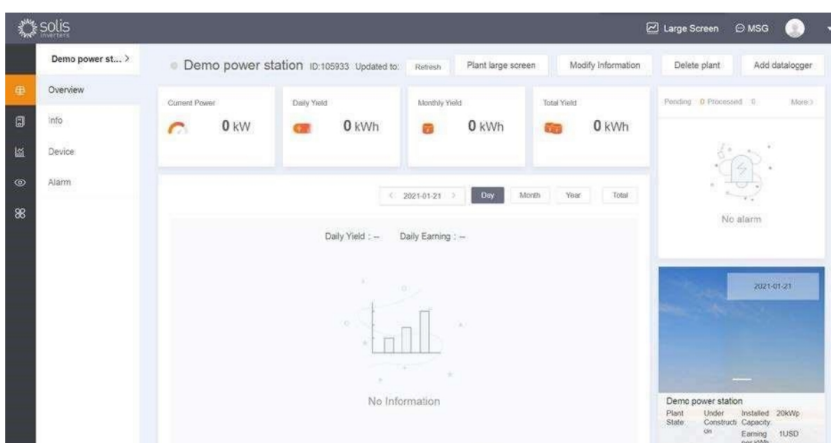


Figure 6 Successful plant creation

STEP 6:

- Users can add dataloggers after the plant has been created successfully.
 - Please click [Add Datalogger] in the upper right corner of [Plant Overview]. See Fig.7
- *Note** – To connect the Data logger to WIFI, please follow WIFI setup instructions available on our website.



STEP 8:

- Please click [+ Add] after entering the Serial Number of the datalogger.
 - Then click Ok to confirm the step.
- *Note** – Datalogger can also be added by scanning QR code through SolisCloud APP when users login the registered account on their mobile phone App.

Add datalogger

Add datalogger SN

OK

Figure 8 Add data logger screen



If you have any question or need further assistance, please contact Solis official After-Sales Service Department.
Ph: 03 8555 9516
E: service@solisinverters.com.au



Documents / Resources

	<p>Solis SolisCloud Customer Monitoring Account Setup [pdf] User Manual SolisCloud Customer Monitoring Account Setup, Customer Monitoring Account Setup, Monitoring Account Setup, Account Setup, Setup</p>
--	---

References

-  [Solis Cloud Monitoring](#)
-  [_____](#)